

A close-up photograph of a ceramic artwork. The image shows a curved, dark, textured surface, possibly a bowl or a vase, with a prominent, irregular, golden-yellow, organic shape in the center. The background is a light, textured surface, possibly a wall or a table. The overall composition is abstract and artistic.

CHELTENHAM

ART eBULLETIN

Your monthly guide to
the visual arts in the
Cheltenham area.

SEPTEMBER 2024

Cover artwork: Ceramic, Jaynie Tricker

Our monthly guide to the visual arts in the Cheltenham area.

Published by ARTEbulletin, hello@artebulletin.co.uk

Spring Gallery

14 Rotunda Terrace, Montpellier Street,
Cheltenham, GL50 1SW

springcheltenham.com

18 -24 September

HIDDEN GALLERY

Matisse, Picasso, Miró & Dalí



25 September - 1 October

UNDER DIFFERENT SKIES

Sarah Ruthven and Cetta Di Lieto



UNDER DIFFERENT SKIES 25th September- 1st October 2024
SARAH RUTHVEN & CETTA DI LIETO
Spring Cheltenham, 14 Rotunda Terrace,
Montpellier Street, Cheltenham, GL50 1SW

Visit Springcheltenham.com for more information.

Sixteen Gallery

16 Rotunda Terrace, Montpellier Street,
Cheltenham, GL50 1SW

sixteengallery.com

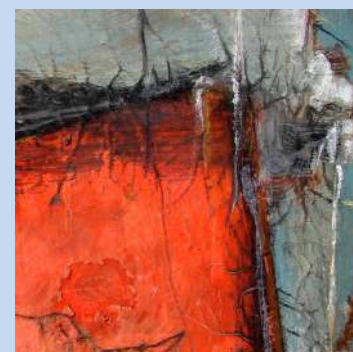
.. until 4 September

Summer - A selection of Summer from
the Sixteen Online collective

5 - 11 September

Original Artworks

Jonathan Oakes presents a selection
of his original artwork featuring his
personal abstract style



12 - 18 September

Artistic Fusion s an exhibition by four
Gloucestershire artists – Wendy
Golding, Beverley Perry, Deborah
Harrison and Gerald Crittle who are
thrilled to come together to showcase
a collaboration of paintings
and sculptures.



For information on all the exhibitions
coming up in August please visit the
website. sixteengallery.com

Our monthly guide to the visual arts in the Cheltenham area.

Published by ARTebulletin, hello@artebulletin.co.uk

GARDENS GALLERY

Montpellier Gardens,
Cheltenham GL50 2XL

Gardensgallery.co.uk

.. 3 September

Back to Nature

An exhibition featuring works by Martyn Dymott, Beverley Perry, Colin Clark, Ewen Hyde and Luba Arnold-Larnie



4 – 10 September

Cheltenham Art Club.

A variety of media, style and subject matter from this thriving art group, usually around ninety pieces on display. Many within the group sell locally, nationally and internationally and do commissions. There will also be an exhibition membership offer.

For more information visit:

cheltenhamartclub.co.uk



GARDENS GALLERY

Montpellier Gardens,
Cheltenham GL50 2XL

Gardensgallery.co.uk

11 – 17 September

Nature's Palette - Palette of the Wild collective proudly presents "Nature's Palette," an evocative exhibition by Gill Cox, Annie Brenchley, Jo Biggadike and Sarah Jemmett. This collaboration explores the vibrant and diverse spectrum of the natural world, showcasing the intricate beauty and delicate balance of our environment through four unique artistic perspectives.

Nature's Palette



Annie Brenchley Sarah Jemmett Jo Biggadike & Gill Cox

18 – 24 September

Art Mix - An eclectic mix of original paintings by artists Jill Hammond, Carol Staines, Mick Walsh and Hazel Tudgay. Glasswork and woodturning by Ian Staines and Chris Tudgay. Perfect for early Christmas shopping, unique pieces and something to suit everyone.



24 September - 3 October.

Gallery closed for Literature Festival

Our monthly guide to the visual arts in the Cheltenham area.

Published by ARTEbulletin, hello@artebulletin.co.uk

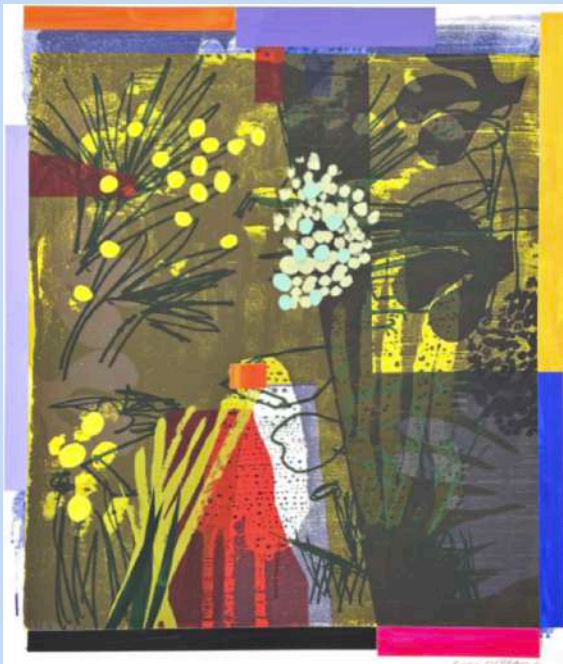
Paragon Gallery

4 Rotunda Terrace, Montpellier Street
Cheltenham GL50 1SW
Paragongallery.co.uk

... until 7 September

BRUCE MCLEAN - An Exhibition of Original and Unique Prints

One of the most dynamic, exciting and innovative artists working in Britain today, Bruce McLean has spent more than fifty years redefining the boundaries of sculpture, painting and performance. The Paragon Gallery is delighted to announce the arrival of a brand new collection of monoprints, alongside some of his most significant original prints in recent times.



21 – 28 September Second Hand Frame Sale

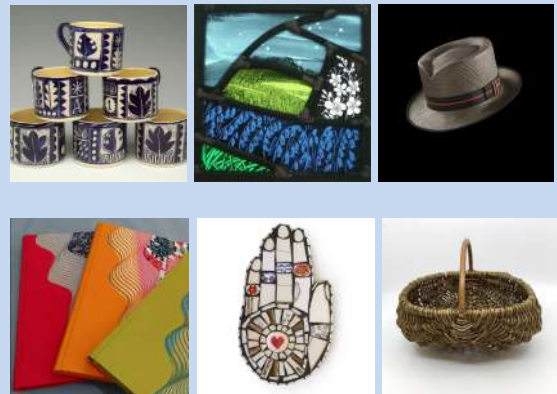
The Paragon Gallery will be offering for sale a broad selection of nearly new (and some older!) frames at very competitive prices. A range of different styles will be available while stocks last.

Gloucestershire Guild

18 Rotunda Terrace, Montpellier Street
Cheltenham GL50 1SW
guildcrafts.org.uk

Opening Hours: Tues –Sat: 10 - 5pm

The Gloucestershire Guild Shop is the place to buy contemporary craft in Cheltenham. You will find beautiful handmade work by our selected professional makers including contemporary jewellery, ceramics, textiles, furniture, leatherwork, glass and baskets.



Coming soon:

4th - 13th October 2022

Open 10am-6pm daily

Later opening on Friday & Saturday

The Gloucestershire Guild will be at **The Gardens Gallery** for the Cheltenham Literature Festival showcasing a varied selection of work, including textiles, ceramics, glass, prints, jewellery, furniture, calligraphy and basketry



Our monthly guide to the visual arts in the Cheltenham area.

Published by ARTEbulletin, hello@artebulletin.co.uk

University of Gloucestershire,
Hardwick Campus, St Paul's Road,
Cheltenham, Glos. GL50 4BS
hardwickgallery@glos.ac.uk

MA Fine Art Shows 2024
Saturday 14 – Thurs 19 September
Open daily from 10am -5pm

Opening Event:
Friday 13 September 6-9pm

Closing Event:
Meet the artists
Thursday 19 September, 5-8pm

Showcasing the artists:

Erum Akhtar
Zainab Aziz
Alison Coggins
Sammi Fletcher
Erin Hickey

MA Fine Art Shows 2024

#UOGMAFA24 Hardwick Gallery University of Glos



Exhibition Opening Event Friday 13 September: 6 pm - 9 pm
Continues Saturday 14 - Thursday 19 September, open daily 10 am - 5 pm

Closing Event / meet the artists evening Thursday 19 September 5 pm - 8 pm

Hardwick Gallery, [Centre for Art and Photography](https://www.glos.ac.uk/centre-for-art-and-photography) University of Glos, St Paul's Rd, Cheltenham GL50 4BS

Corinium Museum
Park Street
Cirencester GL7 2BX

... 15 September
Mon – Sat 10- 5pm
Sun 2-5pm
FREE entry

Brunel Borderers COLLECTIVE
A textile response to the collection
at Corinium Museum.

Group members made visits to the collection to decide on their personal approach. What emerged was a widely differing idea of what a museum and its collection might offer along with work that shows a broad range of textile practice.



Carla Mines

Liz Harding

Linda Babb



Carolyn Sibbald

Margaret Robbie



Our monthly guide to the visual arts in the Cheltenham area.

Published by ARTEbulletin, hello@artebulletin.co.uk

The Wilson

Cheltenham Art Gallery and Museum
Clarence St, Cheltenham GL50 3JT
cheltenhammuseum.org.uk

**Tuesday to Saturday 10am to 5pm,
Sunday 10am to 4pm.**

The Wilson Kitchen is open

Mon – Sat 10am - 5pm, Sun 10 - 4pm

Wilson Nights The Wilson's artist-led events, first Wednesday of every month from 6pm til 9pm. **4 September**

Music by Dryadic from 7pm in the café

Sound and light Installation:

Mycelium from 6-9pm in The Artrium

Theatre

CFF24: Unseen from 8pm in The Lounge. Inspired by true stories from a collection of women.

Talk and Tours:

Cheltenham's BIG Museum Project in The Foyle from 6-9pm (guided tours of Victorian Wing from 6-7pm)

This open, drop-in session will give visitors a chance to hear about our plans and find out how you can get involved. You can also have a guided tour of the newly redeveloped galleries.

This exciting project provides a unique opportunity to redisplay Cheltenham's treasures from over 250,000 amazing objects from art, craft, history, nature, science, costume and contemporary life

**Entry and all performances are FREE
- no need to book.**

For all the info visit the website
Cheltenhamtrust.org.uk

The Wilson Art Gallery and Museum
51 Clarence St, Cheltenham GL50 3JT

Artist Studio Programme 2025

is an opportunity to apply for a studio at The Wilson which provides artists with the time and space to help develop their practice, to enable it to thrive in new ways in the future. Benefits to the artists include regular mentoring, talks and workshops.

The Artist Studio Programme 2025 will run from **January 5th 2025 to January 4th 2026**. To apply for our 2025 programme, visit:

https://docs.google.com/forms/d/e/1FAIpQLSfbVDviXkKmuVQFz52nD-z5uL_RwdcRT34ZNdVwW9oG4cMplw/viewform

The online form closes at **12pm on Wednesday 18th September**.

Accessibility: If you are unable to complete the online application form above due to disability, we will accept responses via audio or video file. You can access a simple set of questions

<https://docs.google.com/document/d/1JlhtTwxtP570rZgTgyT0jqQUdf1UWEuCzRU-Uwh20l/edit>

Send your audio/video responses to: **oliver.tipper@cheltenhamtrust.org.uk**
If your file is larger than 10MB you may need to send it using **wetransfer.com**.

An initial shortlist is made by a team of staff at The Wilson and shared with the **Creative Community Panel** for the final selection of artists. There are 8 places available in total.

All artists will be notified about our decision on **Thursday, 3 October**.

New Brewery Arts

Brewery Court, Cirencester GL7 1JH
newbreweryarts.org.uk

**9am To 5pm Monday;
10am To 5pm Tuesday;
9am To 5pm Wednesday To Sat
Admission: Free Of Charge**

... until 12 October

Jilly Edwards – Woven Tapestries: Follow The Thread

Jilly is an incredibly accomplished weaver who has exhibited her work internationally across Europe, Japan and Australia across her 50+ year career.

Her style has been described as like “painting with wool” and while abstract plays with both colour and subtle texture.

She draws inspiration from her travels and both sketches and collects ephemera to take back to her studio.



For Information, Please Visit
Newbreweryarts.Org.Uk

Nature in Art Museum & Art Gallery

Main A38 Twigworth
Gloucester GL2 9PA
natureinart.org.uk

**Opening times: Tuesday - Sunday
(& bank holidays) 10am - 5pm**

3-15 September (closed 9 Sept) 100 Years And Counting.

Gloucestershire Society of Artists (GSA) centenary exhibition. Held in the Education Centre at Nature in Art, the exhibition showcases members' work in a wide range of styles and media. Founded 100 years ago, this exhibition is a significant milestone in GSA's history.

10 Sept – 13 Oct

Ancient Trees. Following on from previous exhibitions by the Arborealists at NIA, this exhibition is a collaboration between them, a group of professional artists of diverse art practise who share the subject of the tree.



Sep 17 – Oct 20

Postcard Portraits

A unique exhibition of A5 sized original works each produced especially for this display by some of these artists who NIA have worked with over the years. Celebrating 36 years of NIA.

NIA renowned artist residency programme. Come and see what they're creating and have a chat.

For all exhibitions and information about the Postcard Portraits, please visit : natureinart.org.uk/

Our monthly guide to the visual arts in the Cheltenham area.

Published by ARTEbulletin, hello@artebulletin.co.uk

THE YARD

Upper Bath Street, Cheltenham
theyardartspace.com

the **yard:ARTspace** offers a focal point for those who want to make printmaking an important part of their creative process.

Autumn term and 2025 courses and workshops available now.

email:

suebrown@theyardartspace.com

or visit: theyardartspace.com



Nicky Millington

The Art Studio
cheltartstudio.com

Art Classes – looking to book something for the autumn term ...

Children's Art Club –

Tues -	Yr 7-8	5 - 6.30pm
Wed -	Yr 4/5	5 - 6.30pm
Thurs -	Yr 6	4.30 - 6pm

The classes cost £17 per session and payment is made for a course of 6 or 7 weeks - in line with school term times. All materials included, DBS checked and fully insured.

Adults:

All in studio on Tuesdays, Wednesdays, Thursdays and Fridays
10am - 12pm

Classes are **£18** per session, paid for as a course in one payment.

For more information and how to book, for your Autumn classes, please visit:
www.cheltartstudio.com

The Art Studios art classes give adults and children the opportunity to discover and develop their creativity, increasing their skills of observation and application of a wide range of different media.



Our monthly guide to the visual arts in the Cheltenham area.

Published by ARTEbulletin, hello@artebulletin.co.uk

Cheltenham School of Fine Art

32 Wellington Lane
Cheltenham, GL52 2AG
cheltfineart.co.uk

Studio Art Classes

Weekly classes run for three terms a year – offering a wide range of topics

Workshops

Stained glass, watercolour, still life, mandala discovery workshop painting and life drawing

All workshops and autumn courses and classes can be found online including all tutors at:

cheltfineart.co.uk

**art-K**

10 Church Street, Charlton Kings,
Cheltenham GL53 8AR

art-k.co.uk

Art-K provides classes in drawing, painting and 3D modelling.

After school Wednesday to Friday, as well as mornings and afternoons on Saturday

For information on all after school and weekend classes for children up to 16yrs for the Autumn term please contact: art-k.co.uk

Dan, the owner welcomes any enquiries, see below or in person at the studio.

01242 361428
dan@artk.co.uk

The art class environment is encouraging, inclusive and non-competitive. This allows every student to go at their own pace, developing their unique skill set. Over time, students grow significantly in confidence, expression, and creativity. This confidence can change their perception of themselves, as well as the perception others have of them. Trained on the art-K programme, as well as on health and safety and safeguarding (and much more!), all art-K teachers are professional, kind and caring. We never have more than 7 students to 1 teacher and all staff are DBS checked.



The Arty Crafty Bunch

At Como Blend, 2 Station Mews, old Station Drive, Leckhampton

NEW Arty Craft Evenings

Busy during the day? Try our new evening workshops. Come and unleash your creativity

Starting **11 September. 6.45-9pm.**

Just like Creative Coffee, we provide a supportive, safe, environment just to have a go. The longer session means we will have time to take on bigger projects and enjoy a glass of Prosecco along with a natter.

Each month will have a different focus. There will be initial input from professional art teacher, Sarah, who will explain and demonstrate, then be on hand to advise and guide.

£25 per workshop and includes all art materials, a glass of Prosecco and nibbles. The coffee shop will be open, so there will be an opportunity to purchase further drinks and snacks. Come with a friend or come with yourself- all ages are welcome!

Creative Coffee

Starting Monday 9 September.

1 - 2.30pm, £13 a session inc all materials and artisan coffee
Nurture your creative side with a chance to natter Painting, crafting, drawing No artistic experience necessary.

For more information on future sessions and to book visit:

theartycraftybunch.com

Or email **Sarah** at

theartycraftybunch@gmail.com

Alexandra Woods Classes alexandrawoodsart.com/classes

At **Cheltenham Art Club**
Normandy House
Cheltenham GL50 3HW

Portrait Drawing from Life Course Wednesday Evenings (all welcome)

Wednesdays 6.00 - 8.30pm

18 September - 23 October 2024

£180 including all materials and equipment

For more details and to book: hello@alexandrawoods.com

Painting and Drawing Course on Tuesday Evenings Or Wednesday Afternoons.

(non-members and beginners welcome)

Tuesdays 6 - 8.30pm

17 September - 22 October 2024
OR

Wednesdays 2 - 4.30pm

18 September - 23 October 2024

£120 including all materials and equipment

For more details and to book:
events@cheltenhamartclub.co.uk

ALEXANDRA WOODS 

GPC

Griffin Mill, Stroud.

gpchq.co.uk

There are lots of **NEW courses** at all levels of ability and experience, and an opportunity to explore a world of different types of Printmaking.

New course**Introduction to Printmaking :-**

PART 1. Tuesdays 10 Sept - 15 Oct
6.30pm-9pm £160

PART 2. Tuesday 12th Nov – 17 Dec
6.30pm-9pm £160

ALL COURSES AT A GLANCE :

Fridays 6th September –
14 weeks 9.30-12.30 £450 –
Foundations in Printmaking

Saturday 7th & 8th September -
Weekend 10-4pm £150 –
Pigment to Print Workshop with
Nichola Goff

Saturday 14 & Sun 15 Sept 10-4pm
Love Letterpress! with Lucy Guenot

Sunday 22 September 10-4pm £90
Gelliplate Printmaking with Jeanette
Newell.

Thursdays 3 Oct 6.30-9pm, £160
Screen Printing with Andy Kinnear

Visit the website for all the detail. gpchq.co.uk

The GPC is a unique fine art printmaking facility founded in 2005 by a small, committed group of printmakers, run by volunteer members and are now over 100 members strong.

ART Classesgemmahastilow.co.uk/art-classes/**Gemma Hastilow - Art Classes**

Arty Autumnal Adventures Await You!
A new season of classes and workshops coming very soon...

Weekly classes in Winchcombe and Bishop's Cleeve starting on **9 Sept:**

- **Mondays** - Life Drawing: Hone your drawing skills working from live models.

- **Tuesdays** - Art for beginners
Unleash your creativity in a friendly environment, learning all of the basics.

- **Wednesdays** - * **NEW** *
Beginners Acrylic Painting: Discover the joy and versatility of acrylic painting.

- **Fridays** - Watercolours for Beginners: Explore the magic of watercolours working on exciting projects.

Can't commit to weekly classes? Try an intensive **weekend workshop!**

- Go With The Flow - Watercolour Rivers (**14th September**)

- Fabulous Fungi - Charcoal and Watercolour (**12th October**)

- Perfect Pumpkins - Acrylics (**26th October**)

Drop-In Saturday Life Drawing in Winchcombe - Deepen your life drawing skills with monthly sessions: (**7th Sept, 5th Oct, 23 Nov**)

For all info, including costs and how to book on the **Autumn** programme of classes and courses please visit the website : gemmahastilow.co.uk

Peter Garrard Studio

Nine Week Hand-Building Course Autumn Term

Monday 23 Sept – Friday 13 Dec
(with a break for half term from 26
October – 17 November)

Ceramic-hand-building course, with a wide range of projects to guide the complete beginner through a variety of basic techniques, whilst more experienced artists are supported in the development of their own projects.

Classes are limited to a maximum of 10 students. Encouraging students to develop their own style and interests. Pete is a professional tutor with extensive experience in secondary and further education and a practising artist and sculptor (1st class BA hons).

Days and times:

Mondays: 5.45pm - 9.15pm

Thursdays: 1pm - 4.30pm

Fridays: 9.30am - 1pm

Each session lasts up to 3.5 hours. The 32 hours /9-week course costs **£275 tuition**

To book contact:

petergarrardceramics@yahoo.com



Nicky Harvey Workshops artworks-glos.co.uk

ARTWORKS

The Boy's Brigade in Tewkesbury

21 September, 10-4pm

Paint Orca Whales in their natural environment, in acrylics or watercolours with Nick Dawe
£65 3 SPACES LEFT



5 October, 10-4pm

Colourful Autumn landscapes in watercolours with Paul Weaver
£70 1 SPACE LEFT



To book please or for more information on all the workshops coming up this year call **Nicky Harvey** on **07531 837045** or visit **artworks-glos.co.uk**



Our monthly guide to the visual arts in the Cheltenham area.

Published by ARTEbulletin, hello@artebulletin.co.uk

Watch This Space Collective
wtscollective.co.uk

COME and JOIN US Watch This Space has a host of gorgeous creative workshops coming up this Autumn, Recharge, relax and enjoy!

11 September, 6.30 - 9pm:

Bookmark Lino Printing Workshop

Create your own unique bookmarks in this fun and easy lino printing workshop, with the hugely experienced artist and art tutor Gemma Hastilow

£45pp

13 September, 10am - 12.30pm:

Hand-Built Ceramics: Bowl of Light Workshop

Make a gorgeous ceramic vessel with professional artist and creative Jayne Tricker. She will guide you through the process using a range of hand-building tools and techniques

£70pp

25 September, 6.30 - 9pm:

Ceramic Animal Workshop

Come and make a fun, quirky ceramic guinea fowl or chicken with award-winning ceramicist and arts educator, Ros Ingram. **£65pp** - including, all tools, materials and firing

Outdoor Woodcarving Workshops

Wed 18 September, 10 - 12.30 or

1.30 - 4pm (Sue Ryder Leckhampton Court)

Sun 29 September, 10 - 12.30 or 1.30

- 4pm (Painswick Rococo Garden)

Come and work with Natasha Houseago, removing the bark and learning how to edge out a basic design in green ash **£40 per session**

For more information, locations and how to book please contact:
wtscollective.co.uk

The Arts Society, Cheltenham
theartsocietycheltenham.org.uk
Enriching Lives through the ARTS

Tuesday 10 September, 7.15pm

The Pavilion, Hatherley Lane,
Cheltenham GL51 6PN

'The Big Three in Florence'

Lecturer - Antonia Gatward-Cevizli

For an intense period, Leonardo da Vinci, Michelangelo and Raphael coincided in Florence. Antonia will explore the rivalries between the artists and the impact on the young Raphael. (This lecture complements the forthcoming exhibition at the Royal Academy from 9th November 2024 - 16th February 2025)



The lecture is free to members and visitors are most welcome for a fee of **£8**.

If you would like to come please arrive by 7pm.

For more information, please contact
info.cheltenham@theartsociety.org

Our monthly guide to the visual arts in the Cheltenham area.

Published by ARTEbulletin, hello@artebulletin.co.uk

Gas Green Community Centre
Baker Street, Cheltenham GL51 9HQ
artforallgroup.co.uk

Art for All .. art for wellbeing

Art groups for adults with a mental health condition, suitable for all levels of experience. Please note that four of our groups are accessible, denoted *

Varied Locations

Wednesday 1-4pm Nature inspired Drawing and Painting outside*
Varied Locations This group goes to different 'green' locations to draw and paint nature and landscape

Wednesday 1-4pm Photography*
As above

Gas Green

AFA Art Room : **Thur 10am-12pm**
Painting and Drawing* . This is a general art group, painting and drawing

Community Room **Thur 12.30-.230pm**
Painting and Drawing* This is a general art group, painting and drawing

AFA Art Room **Thur 2.30-4.30pm**
Women's Group. This is General Art group for women

AFA Art Room **Friday 10am-12pm.**
Quiet Group. A general painting and drawing group, suitable for people with an additional neurodiverse condition

AFA Art Room - **Friday 12.30-2.30pm**
Printmaking. A general printmaking group using safe techniques

Community Room **Friday 2.30-4.30**
Mindful and Social Craft* This is a varied arts and craft group

**For all detail: artforallgroup.co.uk
artforallgroup@outlook.com**

WE CREATE

www.we-create.org.uk



We Create is an arts action group that formed in 2016. It is a collaborative partnership between **Hardwick Gallery** (University of Gloucestershire) and residents in the communities of St Peter's and St Paul's (Cheltenham). We Create work together to share time, skills and resources, co-commissioning ambitious projects and public events with artists and allies, and people that live, work and study in the area.

For more information about forthcoming events and how to get involved please visit the website:
we-create.org.uk

Cheltenham Heritage Open Days

Cheltenham Heritage Open Days Heritage Open Days returns 6-15 September 2024.

Every September thousands of volunteers across England organise events to celebrate our fantastic history and culture. It's your chance to see hidden places and try out new experiences – all of which are FREE to explore.

The events in Cheltenham range from open buildings – which you can explore either on your own or on an organised tour – to guided walks, talks, exhibitions or even a visit to a hidden gem that usually isn't open to the public. The events are all free, but tickets must be pre-booked for some events where numbers are limited.

The local events are organised by Cheltenham Civic Society and are all run by volunteers, who meet regularly during the year to plan the programme and produce a brochure, which features all the activities and open buildings.

To book an event, visit

heritageopendays.org.uk/whatson/search-cheltenham



Cheltenham Arts Council Celebration of the Arts

7 September, 10am and 4pm

Cheltenham Arts Council is holding their “**Celebration of the Arts**” event, as part of Cheltenham Heritage Week.

Member societies of the arts council will be on the Promenade to showcase their group activity and publicise their programme for the year ahead. . If you are thinking of joining a local arts society come and have a chat and find out more about what they offer.



Cheltenham Arts Council is a registered charity supporting and promoting the work of the many voluntary arts societies in Cheltenham.

cheltenhamartscouncil.co.uk

Cheltenham Arts Council
CHELTENHAM ARTS CULTURE

Our monthly guide to the visual arts in the Cheltenham area.

Published by ARTEbulletin, hello@artebulletin.co.uk

CHELTENHAM PUBLIC ART TRAIL

Cheltenham Public Art Trail

Cheltenham has a fantastic collection of public art. Much of this is in the town's many parks, but other pieces are more tucked away. Visit statues of local heroes such as Gustav Holst, Brian Jones and Edward Wilson. Discover work by internationally acclaimed artists such as Barbara Hepworth, Sophie Ryder and Neville Gabie, as well as community led art projects. There are fountains, mosaics, lamps and clocks.

Explore new artworks and find out more about those you already know. You can pick up a free illustrated map of public art in and around the town centre with suggested trails or download a copy, visit

visitcheltenham.com/things-to-do/tours-and-trails/art-trail



Following a call for content creators, photographers and/or designers, the Public Art Panel (PAP) content creation commission for the public art trail was awarded to Cheltenham-based :

Tess Beck (researcher),
Suzanne Barrett (illustrator) and
Jess Williams (photographer and
graphic designer).

PEGASUS ART SHOP

Griffin Mill, Thrupp, Stroud, GL5 2AZ.
www.pegasusart.co.uk

PEGASUS ART

Passionate Artists Serving the Artistic Community.

An outstanding collection of art materials and supplies for both amateur and professional artists worldwide. Pegasus art specialise in fine art papers, museum quality stretcher bars and make bespoke canvases to order. You can shop online, by telephone and click and collect. Visit the website for info.

For further information on all products plus courses and workshops available, please visit:

pegasusart.co.uk



CHEL TENHAM ARTS NETWORK

Enabling artists to create opportunities and address challenges facing practitioners in the town through meetings, events and sharing information. Created to support the ecology of artists and producers in the Cheltenham area.



**CHEL TENHAM
ARTS NETWORK**

**AUTUMN 24
/ SPRING 25
PROGRAMME**

17/07 24	SUMMER GATHERING 6-7.30PM BOTTLE OF SAUCE 1, AMBROSE ST. CHELTENHAM GL50 3JH	An opportunity to find out what the creative community have been doing, hear about the exciting CAN programme for 24/25 and receive a copy of the new Public Art trail map.
01/10 24	MANAGING EVENTS 6 - 7.30PM MUNICIPAL OFFICES, PROVENEADE, CHELTENHAM GL50 9SA	Putting up an event in Cheltenham? Come and learn what goes into producing an outdoor event from planning, budgeting to licensing requirements. Co-hosted with Marketing Cheltenham
08/11 24	SERIOUS PLAY 3-6 PM HARDWICK GALLERY, UOQ HARDWICK CAMPUS, ST PAUL'S ROAD CHELTENHAM GL50 4BS	You are invited to join a group of 16 creative practitioners for a relaxed, experimental workshop. Facilitated by artist Alice Sheppard Feller.
12/02 25	BUILD YOUR AMBITION 4-7.30PM THE WILSON, ST CLARENCE ST, CHELTENHAM GL50 3ZT	Want to build your ambition, pool ideas, collaborate and have a greater impact? Opportunity to hear the journey of GASP from working independently, taking part in catalyst leadership programme to now working collectively as a CIC. Co-hosted with The Wilson
APRIL 25	READY, SET, GOVERNANCE VENUE/DATE/TIME TBC	An opportunity to find out about different models and benefits of working collectively as creatives/sole traders within an informal structure or more formally, as a CIC for example. Supported by the Berwood Trust, Gloucestershire Rural Community Council (BRCC)

Cheltenham Arts Network is a cross artform information network for practitioners and arts organisers. For more info email Sarah, Louise or Niki on: cheltartsnetwork@gmail.com or follow CAN on Facebook.



To download the 2024/2025 programme please visit FB:
cheltartsnetwork

Create Gloucestershire creategloucestershire.co.uk

CREATE GLOUCESTERSHIRE

supports the cultural and creative industries in Gloucestershire and introduces new people to arts, culture and creativity.

After a website refresh, you'll find the **programmes** they are working on directly accessible from the drop-down tab in the navigation. Also added is clearer signposting to all the resources they have to share - such as **volunteering opportunities** and **ideas for getting into creative careers**.

The **opportunities page** is still going strong with a new focus on information which is more relevant to those working in the arts and cultural sector. Either in organisations or as individual artists and creative practitioners. This is where you will find jobs, artist calls, volunteering opportunities and funding, for example

Plan in some Plan in some play !
The **Noticeboard page** is where you can browse through upcoming events and creative courses all happening a stone's throw away.

Visit the website for more information, opportunities and support:

www.creategloucestershire.co.uk



Create
Gloucestershire

The Holst 150 Birthday Party Imperial Gardens, Cheltenham

The Holst 150 Birthday Party Imperial Gardens, Cheltenham Saturday 21 September 1- 6 pm

Celebrate Gustav Holst's 150th anniversary at a unique community event in the beautiful Imperial Gardens. There will be music from 1pm – 6 pm on the **'Mars Stage'** in various styles and genres, from classical to the more experimental.

Families can explore art and craft workshops in the **'Make, Create'** area from 2pm – 5pm, including cut-out lyrebird sculptures by artist Imogen Harvey-Lewis, paper planets with Helen Nightingale, mural making with Gemma Hastilow and printmaking with Andy Kinnear.

There will also be a multi-sensory, creative technology experience zone, **'Holst's Spaceship Earth'**, where visitors will be invited to investigate our interconnected cosmos through sight & sound art. Curated by Play.Labz, with collaborations from the **University of Gloucestershire**, the zone is inspired by the incredible life & musical journey of Gustav Holst.

This free event, part of the **#Holst150** programme, has been made possible through funding from **Arts Council England**, **The Cheltenham BID**, **The Honorable Company of Gloucestershire**, **Cheltenham Arts Council**, **Cheltenham West End Partnership** and **Cheltenham Borough Council**.

For more info see
visitcheltenham.com/whats-on/the-holst-150-birthday-party-free-community-event-p3526423

Support the ART Ebulletin

Please support the Art eBulletin

The **ART ebulletin** has always been a **free** resource for artists, arts organisations and art lovers alike. It champions all forms of visual art locally, commercial or not. We don't charge for advertising, as we think it should remain an independent directory that is available to all. As its popularity grows so does the time it takes to pull it together. If you value it, are able and would like to help support the cost of producing it each month, then please consider giving an annual donation and help keep this valuable resource viable.

Simply visit :

paypal.me/artebulletin

- enter your amount and press send,

alternatively, email:

hello@artebulletin.co.uk and we can send out further details.

