



3D
Accessories

Starlink Mini TelePlus X2 Pole Adapter – V2.25

Fitting Instructions

****IMPORTANT - THIS ADAPTER WILL ONLY FIT THE NEW 2025 STARLINK MOUNT**

(ALLEN KEY VERSION) AS SHOWN IN THE PHOTOS**

- Remove the existing TelePlus Pole from your caravan or motorhome and remove the Antenna so you are left with the pole.
- Push the Starlink Cable (and network cable if required) up through the TelePlus Pole and then through the adapter fitting.



- Push the Adapter Fitting onto the end of the TelePlus Pole and align the pole holes with the with the adapter with one hole aligned with the encapsulated stainless-steel nut located on the other side of the Adapter.



- Push the New End Cap on to the bottom end of the TelePlus Pole and secure.

Version 2.25
December 2026

Questions or technical support please email - sales@3d-accessories.co.uk
Web - www.3d-accessories.co.uk



3D
Accessories

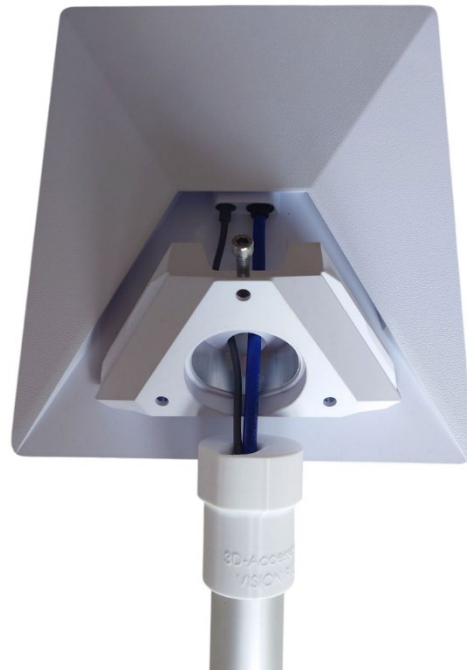
Starlink Mini TelePlus X2 Pole Adapter – V2.25

Fitting Instructions

- Using the M3x40mm bolt supplied with the adapter and a 2mm allen key (not supplied) screw the bolt from one side of the adapter all the way through and tighten into the encapsulated stainless-steel nut on the other side of the adapter.
- Be careful not to catch the cables within the pole when screwing the bolt through.
- Do not over tighten the bolt as this can damage the encapsulated nut.



- Feed the Starlink Cable (and network cable if required) through the Starlink Pole Mount and connect the cables to the Starlink.



Version 2.25
December 2026

Questions or technical support please email - sales@3d-accessories.co.uk
Web - www.3d-accessories.co.uk



3D
Accessories

Starlink Mini TelePlus X2 Pole Adapter – V2.25 Fitting Instructions

- Clip the Starlink Mount into the Starlink.



- Fit the TelePlus Pole Adapter into the Starlink Mini mount and tighten up the Allen key on the Mini Mount until the TelePlus Pole is secure.



Version 2.25
December 2026

Questions or technical support please email - sales@3d-accessories.co.uk
Web - www.3d-accessories.co.uk



3D
Accessories

Starlink Mini TelePlus X2 Pole Adapter – V2.25

Fitting Instructions

- Fit the TelePlus Pole back on to your Caravan or Motorhome.
- Adjust the positing of the Starlink by twisting the TelePlus Pole in the usual way.



- **It is advised that you lower and remove the Starlink before travel, to protect the Starlink from damage during transit.**

Version 2.25
December 2026

Questions or technical support please email - sales@3d-accessories.co.uk
Web - www.3d-accessories.co.uk