



PRECISION K SERIES

OWNERS MANUAL



SERIAL NUMBER _____

DATE OF PURCHASE _____

Table of Contents

GENERAL INFORMATION	4
OPERATING CONDITIONS.....	4
SAFETY.....	4
WARRANTY.....	4
LIMITED WARRANTY	5
INCLUSIONS.....	5
EXCLUSIONS	5
BATTERY WARRANTY	5
VOIDING OF WARRANTY.....	5
SERIAL NUMBER IDENTIFICATION	6
BATTERY COMPARTMENT.....	6
BATTERY SWITCH	6
BATTERY MONTIOR.....	7
TOWING and MAINTENANCE POWER PROCEDURE	8
KEY SWITCH.....	9
LCD DISPLAY	9
INSTRUMENT PANEL	10
HOME SCREEN	11
RADIO	11
F-CAM.....	11
PHONE.....	11
APPLE CAR PLAY	11
USB	12
BT MUSIC.....	12
INSTRUMENT	12
ANDROID AUTO	12
SETTINGS.....	12
PHONE SYMBOL	12
MONITOR SYMBOL	12
DISPLAY SETTINGS.....	12
CONTROL PANEL	13
ENGINE START / STOP BUTTON	13

FORWARD / REVERSE SWITCH	13
HAZZARD SWITCH	13
RABBIT / TURTLE MODE SWITCH	13
HEADLIGHT, TAIL LIGHT, HORN, & BLINKER CONTROLS.....	14
BLINKERS	14
HORN.....	14
USB PORTS	14
WIRELESS PHONE CHARGER	14
ACCELERATING and BRAKING	14
MIRRORS	15
OTHER INCLUDED ITEMS	15
MAINTENANCE.....	15
CARE	16
SERVICE	16

GENERAL INFORMATION

Precision K Series carts are only available with electric power. This manual, contains important information about the golf cart and its features. It is important that you as the owner / operator read and understand this manual to safely operate and maintain the vehicle.

At **Precision Custom Cart**, we want owning your cart to be a fun and rewarding experience. We are here to help and answer any questions you may have. You can contact us on the web or by phone. All information is on our website at www.PrecisionCarts.net.

OPERATING CONDITIONS

The **Precision K Series** cart is intended to be used as a recreation vehicle on golf courses, paved surfaces, defined paths, and safe offroad conditions. The vehicle is not intended to exceed 25mph and is not intended to drive on streets where local law prohibits golf cart operation. The cart is not intended to drive through water that reaches the rear axle.

SAFETY

The **Precision K Series** cart owners must use caution in operating this vehicle. This vehicle should only be operated by licensed drivers or persons deemed eligible by local law.

Rules to follow

- Do NOT operate non golf car (2 seat versions) without safety belts. These may be required on all carts by local law. Seat belts are available at no charge on 2 seat versions.
- Do NOT drive through water that reaches the axle of the cart.
- Do NOT adjust the controller for the purposes of increasing speed above 25mph.
- Do NOT take curves at excessive speeds. These carts are much lighter and has a higher center of gravity because of the presence of lighter Lithium batteries.
- Make sure all arms and legs are inside the cart.
- Observe all traffic signs as if you are operating a motor vehicle in accordance with local law.
- Do NOT operate on steep inclines.

WARRANTY

Precision Custom Carts include a one (1) year limited warranty on the golf cart as explained in the *Limited Warranty* section that follows. The battery also includes a warranty. The type of battery warranty will depend on the type of battery installed. Your purchase price may have included additional warranties which are separate from the *Limited Warranty*. Except where otherwise noted, these warranties are non-transferable.

LIMITED WARRANTY

Precision Custom Carts hereby warrants to the original purchaser or lessee, subject to the provisions, limitations and exclusions in this limited warranty, that its new vehicle or new component purchased from **Precision Custom Carts** or an Authorized Dealer or Distributor shall be free from defects in material and workmanship under normal use and service for a period of 1 Year, subject to the provisions, limitations and exclusions in this limited warranty.

This limited warranty covers material, workmanship and repair labor cost as to those items specifically listed below for the periods specified. Such repair labor shall be performed only by **Precision Custom Carts**, its Authorized Dealers or Distributors, or a service agency approved by **Precision Custom Carts**.

INCLUSIONS

The Precision K Series warranty includes everything on the cart from bumper to bumper.

EXCLUSIONS

Excluded from any **Precision Custom Carts** warranty is damage to a vehicle or component resulting from a cause other than a defect including poor maintenance, neglect, abuse, accident and collision, maintenance adjustments, unreasonable or unintended strain or use, improper installation of accessories, installation of parts or accessories that are not original equipment, non-approved alteration, and acts of God. Also excluded from any Precision Custom Cart warranty are items that deteriorate, fade or fail due to exposure or ordinary wear and tear.

BATTERY WARRANTY

The *Battery Warranty* covers the replacement or repair of the battery(s) if the battery is used in normal operating environments and proper charging procedures are followed at all time. The determination of warranty coverage is at the sole discretion of the battery manufacturer.

Types of Batteries and their warranties included in Precision K Series carts are:

Precision Custom Carts Lithium	3 years
Roy Pow Lithium	5 years
Lithion Lithium	5 years

VOIDING OF WARRANTY

This and any other warranty shall be void if the vehicle or component is damaged, involved in an accident, abused or used in an unintended manner or shows indications that it has been altered in any way, including, but not limited to, modification of the speed governor, braking

system, steering, transaxle, or other operating systems of the car to cause it to perform outside original specifications.

SERIAL NUMBER IDENTIFICATION

The serial number of the vehicle is located on the aluminum frame under the golf cart (Drivers side).

BATTERY COMPARTMENT

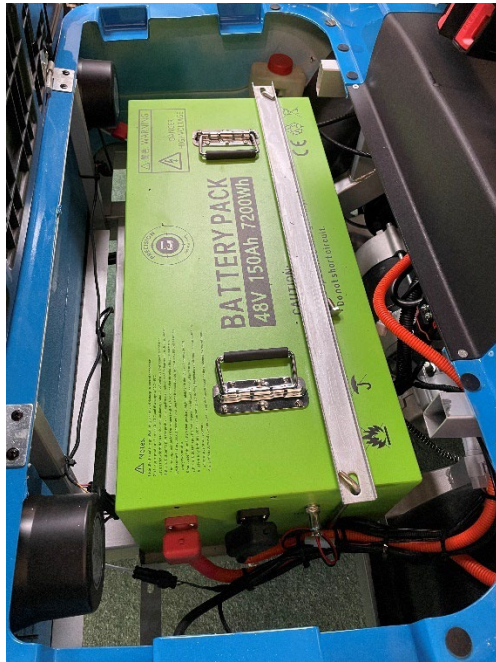


Figure 1 Battery Compartment

BATTERY SWITCH

Precision K Series Carts come with Lithium ION Maintenance Free batteries. For some models, the battery power switch is located on the side of the battery. To power the battery on, push the power button in for 3 seconds and then release. The battery will power on and the button will remain in the in position. To power the battery off, press and release the power button, the button will release out and the battery will power off. Powering the battery off is a good practice any time work or washing is being done to the golf cart, as well as times when the cart is not intended to be used for over 4 weeks.

Sleep Mode: Some lithium batteries will automatically power themselves off after no use. This time varies by battery manufacturer and can range from 2 hours to 2 days. If your battery auto powers off, on the next use you will need to power it back on by pressing and releasing the power button to get the power button in the off position, and then pressing and holding the power button for 3 seconds to power the battery back on.

Charging: Lithium batteries will perform better and last longer if they are charged and remain on the charger after every use, no matter how short the usage was. Trying to get multiple uses or rounds of golf off of a single charge is not good for the battery. The battery charger is mounted onboard the cart on the back wall of the battery compartment. The battery charging port is located on the front seat body panel wall. Some carts have a charger indicator that the status during charging.

Note: Precision Custom Carts brand batteries do not power off.



Figure 2 Charge Port and Charging Indicator

BATTERY MONTIOR

The Battery Level is located on the main console HOME page. It indicates in percentages the power level remaining.

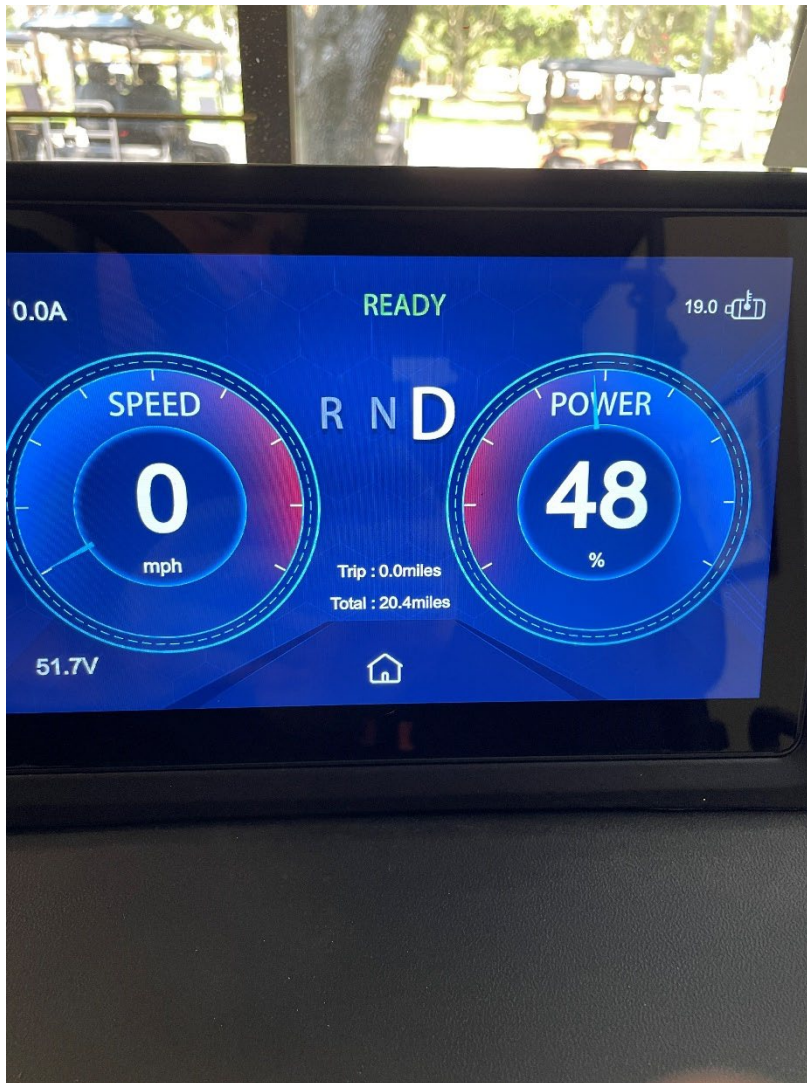


Figure 3 Power Level Percentage

NOTE: Lithium batteries have a battery management system (BMS) and the BMS will shut the battery off between 5 and 15% to prevent the battery from being damaged by the charge getting too low. Do not attempt to use the cart if the meter is too low at start of use, or if the cart has not been charged.

TOWING and MAINTENANCE POWER PROCEDURE

Precision K Series carts do not have a Run / Tow switch that is found in most carts. It can be towed when the START button is turned off. Power must be off any time the cart is pushed or towed. Anytime electrical maintenance is required, the power must be off and the Positive Battery Cable must be

disconnected. Failure to turn power off when required can damage the Electronic Motor Controller of the golf cart.

KEY SWITCH



Figure 4 Remote Key Fob

Precision K Series uses a Key Fob remote (Similar to an automobile) to lock or unlock the controller of the golf cart. To power the golf cart on, click on the “Unlock” button on the key fob. The cart will click and the Engine Start / Stop button will light up. Pushing the Engine Start / Stop start button will cause the START Button to flash and will allow Power to the cart when the START Button is pressed. The *Lightning* Button will remotely start the cart.

To power off and lock the cart, press the Engine Start / Stop start button and the cart will power off. Note that for a period of time the cart can be powered back on by pressing the Engine Start / Stop start button again unless that cart has been locked by clicking on the “Lock” button on the key fob.

The cart will automatically lock after a period of time when the Engine Start / Stop button is pressed to power the cart off or when the lock button is pressed on the key fob.

LCD DISPLAY

The Display Panel displays the current status of the golf cart and has all of the controls for the radio. This will be covered in more detail in the Display and Radio Control Section.



Figure 5 LCD Display of Instrument Panel

INSTRUMENT PANEL

This is the screen that will be seen after the START Button is engaged.

Amperes – Top Left Corner

Temperature (Celsius) – Top Right Corner

Reverse – Indicated by the “R” in the upper middle. When the cart is in Reverse, the backup camera will be displayed.

Neutral – Indicated by the “N”

Forward – Indicated by the “F”

Speed – Indicates the operating speed of the cart located in the center Left in miles per hour.

Power – Indicates the battery level percentage remaining located center right.
Trip Odometer – Lower middle
Odometer – Lower middle
Battery Voltage – Lower Left Corner
House Symbol – Sends the display to the *HOME* screen

HOME SCREEN

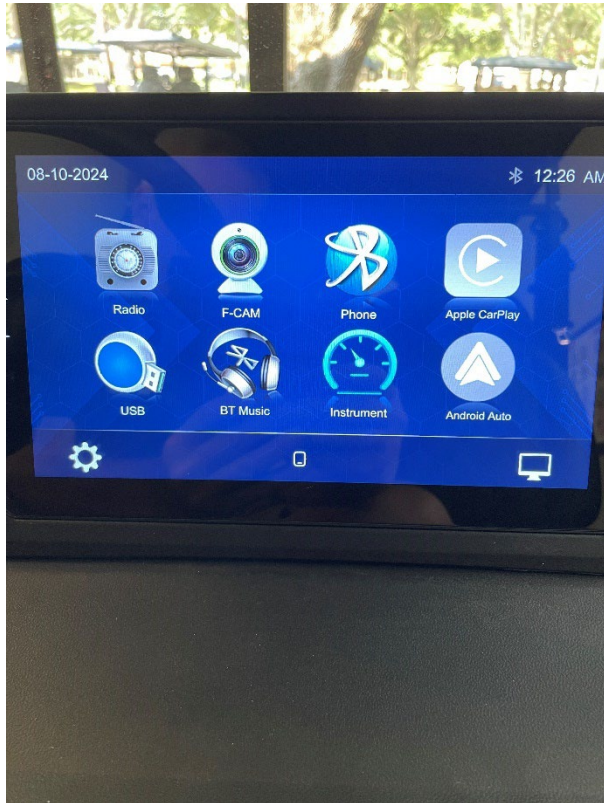


Figure 6 Home Screen

RADIO

This allows AM/FM settings.

F-CAM

This option allows for the connection of an addition camera.

PHONE

Allows the directory of a Bluetooth connected phone to be displayed.

APPLE CAR PLAY

Provides a menu for a Bluetooth connected Apple Phone.

USB

Shows the device that is connected by USB.

BT MUSIC

Shows the music directory of a Bluetooth connected device.

INSTRUMENT

Returns the Screen to the *INSTRUMENT* panel display.

ANDROID AUTO

Provides a menu for a Bluetooth connected Android Phone.

SETTINGS

The *gear* logo in the lower lefthand corner will change the display to a list of settings that can be changed or enable

PHONE SYMBOL

Located in the lower middle, displays a list of devices to be connected.

MONITOR SYMBOL

Turns the screen to off.

DISPLAY SETTINGS

By pressing the *gear logo*, a new menu that shows option for setting time, sound, general settings, and changing the display wallpaper.

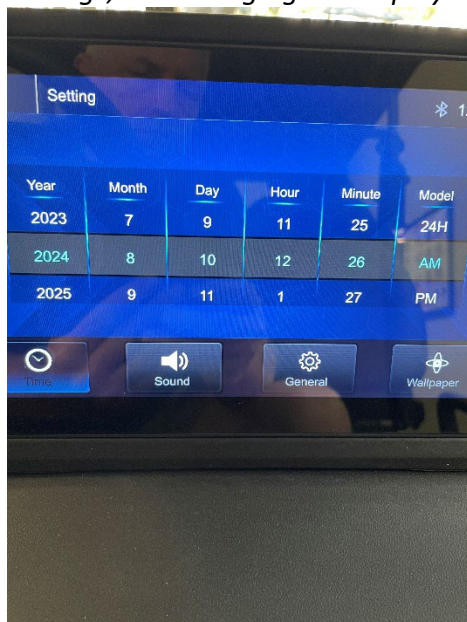


Figure 7 Settings Display

CONTROL PANEL



ENGINE START / STOP BUTTON

This button is used to turn the carts electrical system on and off. Once enabled (Unlock pressed on the Key Fob) It can be used to turn the golf cart on or off.

FORWARD / REVERSE SWITCH

The Forward / Reverse switch is located on the dash and will determine the direction of the cart.

HAZZARD SWITCH

The Hazzard switch is located on the dash and when turned on will activate the emergency flashers for use if the cart is ever disabled on the road.

RABBIT / TURTLE MODE SWITCH

The Rabbit / Turtle mode switch, located on the driver side of the control panel, is used to set the maximum speed. When the switch is set to Rabbit mode the cart will have full speed (approximately 25 MPH) capability which is optimal for driving on the street. When the switch is set to Turtle mode the cart will have limited speed (approximately 16 MPH) capability which is optimal for the golf course, parking, and rugged terrain.

HEADLIGHT, TAIL LIGHT, HORN, & BLINKER CONTROLS

The lights are controlled by the rocker switch and the blinker control located on the steering column. This rocker switch has three positions.

ROCKER POSITION FOR HEAD LIGHTS

Up – Running Lights

Middle - Off

Down – Headlights

Low Beam – blinker control back

High Beam – blinker control forward

BLINKERS

Moving the blinker arm up or down will set the turn signal to right or left turn.

HORN

The knob on the end of the blinker arm controls the headlights and horn.

USB PORTS

USB Ports available for Charging / Powering optional devices. It also shows the voltage of the twelve - volt converter.

WIRELESS PHONE CHARGER

Located below the rocker panel

ACCELERATING and BRAKING



To Accelerate, step on the pedal labeled “GO”.

To Stop, step on the pedal labeled “Stop”.

To lock the parking brake, step on the small pedal labeled “Park”. Note that you can release the parking brake by stepping anywhere on the stop pedal or the parking brake will release automatically when you step on the pedal labeled “Go”.

The **Precision K Series** has front DISC brakes and rear Hydraulic drum brakes. Check the brake fluid level in the reservoir which is located under the seat. Use on DOT 3 Brake Fluid.

MIRRORS

The **Precision K Series** has 2 lighted side mirrors that are illuminated both on the mirror side and on the back side and are synchronized to the blink indicators in the front headlights and rear taillights.

OTHER INCLUDED ITEMS

- Custom Wheels and Tires
- Folding Front Windshield
- Hi Performance Controller
- Hi Performance AC Motor
- 12 Volt Converter
- Seat Belts
- Fender Flares

MAINTENANCE

Like all carts, the **Precision K Series**, routine maintenance and care is required.

Tires – Check routinely for tread depth, uneven wear, and air pressure. Check lugs routinely and torque all lugs to 75psi. Rotate tires once a year.

Alignment – check to make sure the steering wheel is centered. Check tires for uneven wear. This is an indication of poor alignment.

Brake Fluid – Check fluid levels before operating.

Electrical Safety Devices – check headlights, tail lights, brake lights, blinkers, horns, and hazards before operating.

Front and Rear Bushings – check for wear annually.

CARE

A clean cart is more fun and safer to operate. Cleaning allows the owner to visually inspect the cart for loose hardware and structural cracks.

Painted Surfaces – Use non-abrasive cleaning agents typically used on automobiles. Wash with non-abrasive soap, water, and a soft rag. Dry with a soft towel. Wax maybe applied to gloss finishes.

Battery Compartment – Use a vacuum or air pressure to remove dirt. A damp rag may be used to wipe surfaces. Do not use direct water pressure in this area.

Windshield – Use non abrasive soap, water, and a soft cloth to clean the surfaces.

Seats – Wipe seats with a damp cloth.

SERVICE

If you are in need of warranty, routine, or non-routine service, please contact your dealer or you may contact us on the website at www.PrecisionCarts.net. You may also call us at (281) 612-3034 to schedule an appointment or to find a service provider near you.