



PacificContours

Aerospace Machining and Assembly



Pacific Contours specializes in complex machining and assembly of high-demand products for the aerospace industry. **Pacific Contours** acquired Pacific Jaycraft in 2008, making it one of the largest woman owned companies in the aerospace industry. This acquisition broadened the scope of **Pacific Contours** well beyond the aerospace industry with all types of hard metal turning, machining and precision grinding capabilities. **Pacific Contours** operates on two basic principles: hire and retain exceptional personnel and operate with the latest technologies to produce a superior product. Our employees are the cornerstone of the company and equipped with the latest technologies to ensure we deliver a quality product to our customers the first time, every time.



AWARDS



BOEING Supplier of the Year-2006



Silver Eagle Award - 2006



Nunn-Perry Award - 2008

STATE OF THE ART EQUIPMENT



High Speed 5-Axis Mill with Shuttle Changer

QUALITY CONTROL



Quality Inspection Dept. CMM Tables

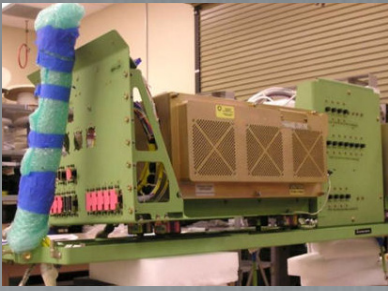


HyperMach™ Horizontal Profiler



Quality built into every product

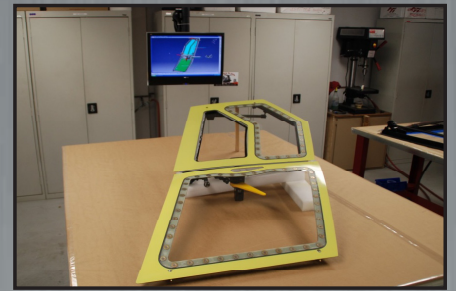
AEROSPACE ASSEMBLY



Electrical Rack Assembly

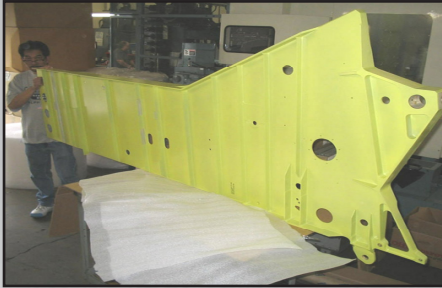


14' Wing Assembly

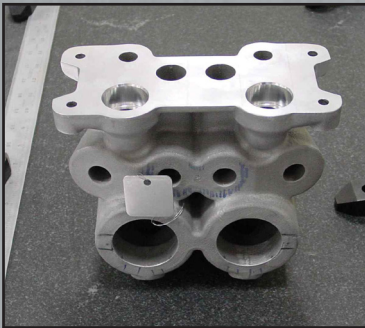


Assembled Jettison Door with Transparency
(CATIA Model Interrogation at Assembly)

AIR FRAME MANUFACTURING



HOUSINGS & MANIFOLDS



Lubrication Housing

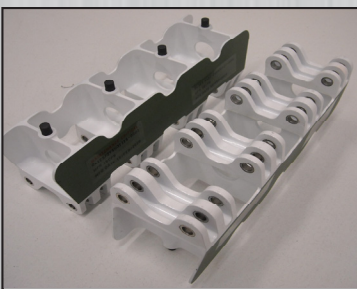


Transmission Housing
(Flush/Flow & Pressure Test Certified)



Manifold

HARD METALS MACHINING



Titanium with Pressed Bushings
(FTI Certified)



Nitronic 60



Barrel Assembly



Helicopter Rotor Mast

TURNING, GRINDING & HONING



Shell Accumulator



Tight Tolerance Lathe Machining



Gun Drilling



Turbine Engine Components



Pacific Contours Corp.

Corporate Headquarters

5340 East Hunter Ave.

Anaheim, CA 92807

Tel: 714.693.1260

Fax: 714.693.1252