



# Grey Street House Company House Version

N-scale



[www.conowingomodels.com](http://www.conowingomodels.com)  
<https://www.facebook.com/ConowingoModels/>  
[conowingomodels@yahoo.com](mailto:conowingomodels@yahoo.com)

May, 2025



Thank you for purchasing this kit!

## INTRODUCTION

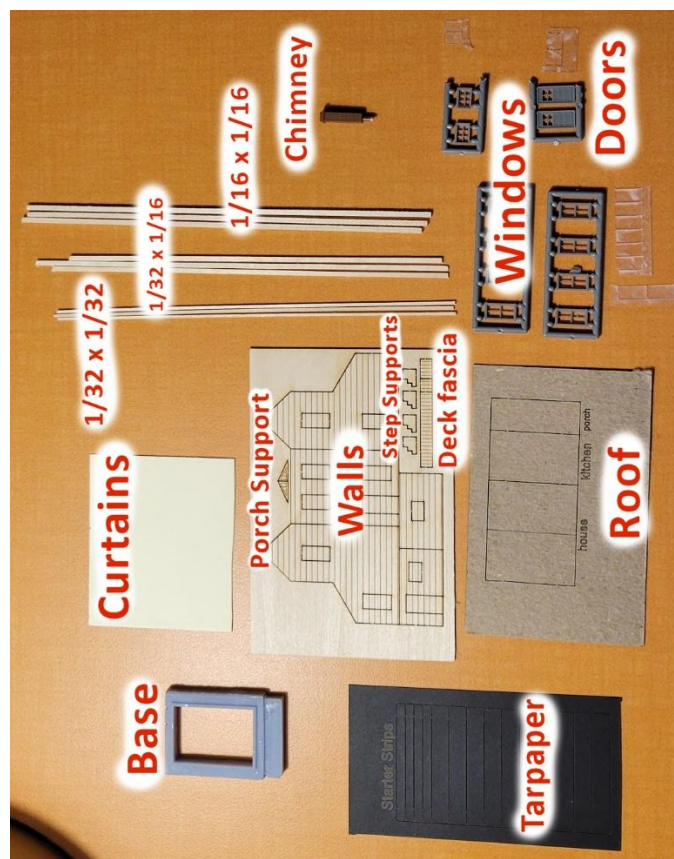
This kit was designed to be a company house. The design itself is fairly generic and was probably a catalog house.

Supplied are the basic directions. For more tips and some additional instructions, please see [conowingomodels.com](http://conowingomodels.com). We highly encourage variations, so please be creative.

## INDEX

|                                    |   |
|------------------------------------|---|
| INTRODUCTION .....                 | 1 |
| INDEX.....                         | 1 |
| PAINT PREP.....                    | 2 |
| BRACING .....                      | 2 |
| BUILDING ASSEMBLY .....            | 2 |
| DOOR AND WINDOW INSTALLATION ..... | 2 |
| TARPAPER ROOFING .....             | 3 |
| FRONT PORCH CONSTRUCTION .....     | 4 |
| ROOFING .....                      | 4 |
| PORCH ROOF INSTALLATION .....      | 5 |
| FINISHING TOUCHES .....            | 5 |

## PARTS INVENTORY



### PAINT PREP

By starting with the paint prep, you accelerate the ability to quickly move through construction. These instructions assume that you intend on painting the building as we did.

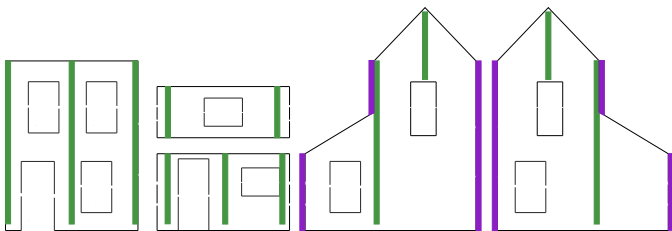
In order to achieve the weathered look, we stained all stripwood and braced sides before assembly and eventual painting, using dry brushing techniques.

We would recommend painting the building grey or white.

Common trim colors for the early 1900s would have been white, black or dark green. This would include the corner trim, windows and doors.

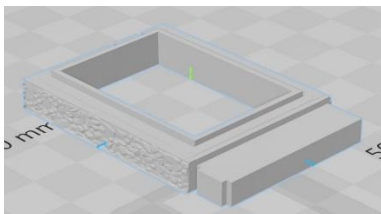
| Stripwood Parts and Color Chart |     |   |            |
|---------------------------------|-----|---|------------|
| Wood                            | Qty | Purpose                                 | Color      |
| 1/32 x 1/32                     | 3   | Corner Bracing/ Deck Supports           | Green      |
| 1/32 x 1/16                     | 3   | Deck boards/ Deck railing               | Green      |
| 1/16 x 1/16                     | 3   | Bracing                                 | None       |
|                                 |     |   |            |
| Chimney                         | 1   |   | Brick Red  |
| Exterior Walls                  | 4   | Do not paint until after bracing        | Green      |
| Porch Fascia                    | 3   | Do not paint until after it is in place | Green      |
| Porch Roof Supports             | 2   | Do not paint until after it is in place | Green      |
| Step Supports                   | 4   | Do not paint until after it is in place | Green      |
| Base                            | 1   |   | Grey Stone |
| Doors                           | 2   |   | White      |
| Underside of roofing            | 3   |   | White      |
| Windows                         | 9   |   | White      |

### BRACING



1. Add bracing (shown in green) using the 1/16 stripwood.

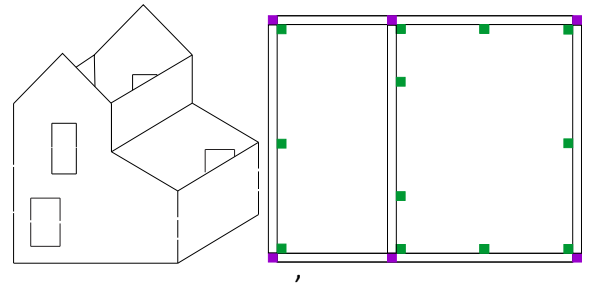
Ensure the bracing does not go to the bottom of the building pieces. The reason is below.



You will notice that there is a lip on the edge of the base. It is more impactful than it looks.

2. Cut and glue the 1/32 corner pieces (shown above in purple)
3. Trim the stripwood to line up with the roof line.

### BUILDING ASSEMBLY



1. Assemble the building as shown above. The diagram on the right is a top view.
2. Ensure the building is nice and square.
3. Let it dry.
4. When dry, paint as you desire.
5. Let dry again.

### DOOR AND WINDOW INSTALLATION

1. Glue the acetate into all doors and windows. We recommend using canopy glue.
2. Let dry.
3. Glue each door and window into place.
4. Cut out and glue into place all curtains and/or blinds.

Variations in height/width of curtains and blinds add "proof of life" to a structure.

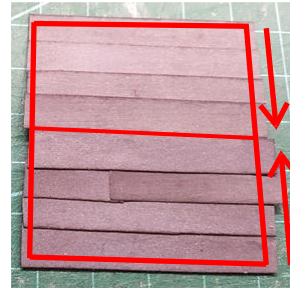
You could also paint the curtain material before installation.

## TARPAPER ROOFING

1. Find the black construction paper carrier sheet with the cut strips on it. **\*\*\*Do not remove the strips from the carrier sheet yet.**
2. You could use it the way it is to represent a brand-new roof by using as single, even coat of dark grey and skipping ahead to step 9. However, we recommend very quickly spray painting it with three different shades of grey. You don't want a uniform cover. Half-sprayed splotches are great.
3. It dries pretty quickly. Once the roofing is dry, cut a strip from the carrier sheet.
4. Take that strip and line it up along the corner of a scrap piece of 2x4 or an edge of a hard material you don't mind getting messed up.



5. Take either a 400-grit sanding sponge or sandpaper and gently run it across the construction paper strip. The goal is to blend the paint colors together.
6. If you so desire, you can dig into one of the long the edges and sides of the construction paper enough that the black comes through to show roofing damage. It's your model, your call. (Photo shows fully assembled)
7. Repeat steps 3 - 6 until all roofing strips are complete.
8. On one piece of roofing material, scratch up both long edges if you're aging the roof. This will be your roof cap. Hold this piece separate from the rest.
9. Locate one of the chipboard roof pieces you prepared a while ago.



10. With the middle cut edge up, glue the roofing strips down in the following manner;
11. Start by adding the starter strip at the bottom of each roof.  
  
Add a row of tarpaper over the top of the starter strips.  
  
Ensure the scraped black edge is on the down side. You want a slight overlap on the bottom edge and on both sides.
12. If you desire, you can cut a row short and add an overlapping piece. Left to right or right to left doesn't matter. This shows where the tarpaper roll ended and a new one began. You may also want to use a scraped edge on the "new roll" where it overlaps the "old roll". This shows character. The pilot model had four rows on each side of the roof.
13. We recommend flipping the main roof around and doing the bottom row.
14. Allowing for slight overlap, add rows until both halves are covered. Do not cross over the cut line in the middle.
15. Repeat for the porch roof and kitchen roof.
16. Allow the roof to dry and cut the excess from the sides. You may choose to add some weight so that the roof dries flat. Not adding weight may add character, but you might not be happy with the results.
17. Reserve pieces for the roof cap, kitchen roof seal and front porch roof seal.

## FRONT PORCH CONSTRUCTION



1. Glue into position the structure on the base.

The two-story side goes on the bump-out side of the base.

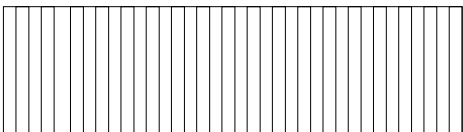
If you put the bump-out (kitchen) side of the building on the bump-out side of the base, it will probably work. However, you won't be able to add the porch roof and it will look a but odd.

2. Glue the deck fascia pieces to the front and sides of the porch.

The long piece needs to be centered in the front. You will eventually add pieces of  $1/32 \times 1/32$  to support the porch roof on the ends.

You will notice two slits on the left side of the deck. This is where the smaller piece goes. The slits are for the step supports. There are two more on the back side of the base and will fit under the back door.

5. Measure, cut and glue in place the  $1/32 \times 1/16$  stripwood for use on the porch and steps.



The deck boards on the porch go away from the building.

Be sure to leave a little spacing between the boards as the wood expands and contracts.

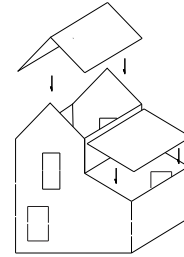
The boards should overlap the right and front sides by just a little bit.

6. Trim all deck boards and steps so that they are even.

We recommend using a sanding sponge for this.

## ROOFING

1. Apply roof pieces for the main roof and kitchen roof.



2. Glue the roof cap on top of the roof ridge.

3. Glue an additional piece of roofing to the top of the kitchen roof, so that there is a "seal".

It should be evenly placed between the roof and side of the building.

4. Glue the building to the top of the foundation. Overlap should be even on the left, right and rear sides.

5. Glue the porch supports to the underside of the porch roof so that the scribed sides face out.

## **PORCH ROOF INSTALLATION**



1. Decide how high you want to install the porch roof.

The pilot model has the bottom of the porch supports even with the 9<sup>th</sup> scribed line from the bottom of the porch.

We recommend turning the building 90°, so that the back door faces down and supporting it.

We weren't happy with the length of the porch roof on the pilot model, so we added a little bit to it for the production kits. Decide if you want to keep the same length or shorten it and take appropriate action.

2. Glue the porch roof into place where you want it.
3. When dry, cut 1/32 x 1/32 stripwood to support the corners and center.
4. Cut notches in the deck boards for the corner supports to fit.
5. Rotate the structure back to level and glue the corner supports into place.
6. Glue the center support into place.
7. Using 1/32 x 1/16 stripwood, cut and glue into place the deck railing as shown above.

We added a second railing below the first, however we're not happy with how it looks and therefore would not recommend it.

8. Glue the roofing reserved as the front porch seal into place.

It should be evenly placed between the roof and side of the building.

## **FINISHING TOUCHES**

1. Glue into place the four step supports on both the side and rear of the building. The scribed sides face away from each other, so that they are visible.
2. Using 1/32 x 1/16 stripwood pieces, add the steps to the step supports.
3. Trim the steps so they are even.
4. File down the chimney so that it sits level on the roof.
5. Glue the chimney into place as desired.
6. Apply any paint touch up and weathering as desired.

Please share your completed photos on

<https://www.facebook.com/ConowingoModels/>

If there are any parts missing, please e-mail me what you need to complete the kit and I'll send it your way. Suggestions for improvement are welcome.

See the Conowingo Models website

[www.conowingomodels.com](http://www.conowingomodels.com) for more exciting, funky buildings for your model railroad!

Many thanks to Jeff Grove, Steve Milley and Mark Schreier for their support!