

# Conowingo Models



## PAINTER GENERAL STORE



[www.conowingomodels.com](http://www.conowingomodels.com)  
<https://www.facebook.com/ConowingoModels/>  
[conowingomodels@yahoo.com](mailto:conowingomodels@yahoo.com)

Jan 26 revision

Thank you for purchasing this kit!

This kit is based on a small building we noticed while passing through Painter, VA. At the time, we weren't able to determine whether it was occupied or what it was used for, and the design is based on poor-quality photos found online.

About a year before the building was torn down, we were able to visit the site and take better photos. A few of these are included at the end, along with updated signage. The signage sheet contains both a photo of the original sign and a ChatGPT-enhanced version, which we found appealing, even though it doesn't exactly match the original.

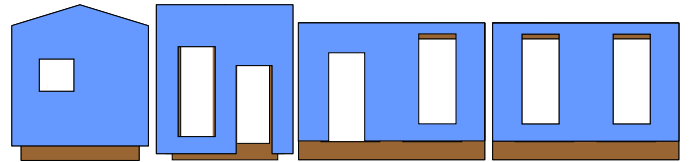
If you view the location on Google Maps (Painter, VA - US Rt. 13 and VA Rt. 1203), you'll see a similar brown structure—currently Savage Taxidermy—still standing next door.

One of the pleasures of model railroading is giving new life to lost structures. While the real building is gone, it can live on in many forms. We think it would make a great coffee shop, and we've adapted it as a bait shop (not produced) and as a Gold Dust series background flat. As of this writing, it's also being considered for a motel office.

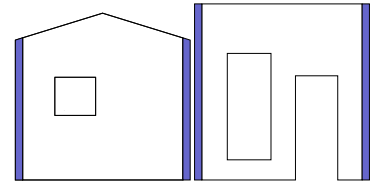
Supplied are the basic directions. For more tips and some additional instructions, please see [conowingomodels.com](http://conowingomodels.com)

### BUILDING

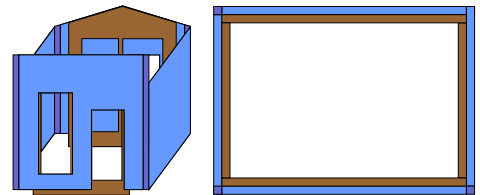
1. Paint – All parts as required.
2. This kit is self-bracing. There are pieces on the basswood sheet that form the foundation and support the walls. Be sure to brace the side walls so that the basswood matches the clapboard on the top and sticks out on the bottom. The rear pieces match on top and are centered. The front piece of basswood touches the top of the clapboard and is centered on the clapboard with the bottom notches clearly visible. (Blue clapboard, brown basswood)



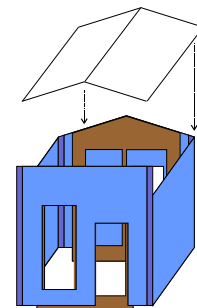
3. Stripwood – Cut and glue corner pieces (shown in purple). Trim as shown when dry.



4. Now is a great time to add the window blinds and curtains as desired. The windows and doors can be added as well.
5. Assemble



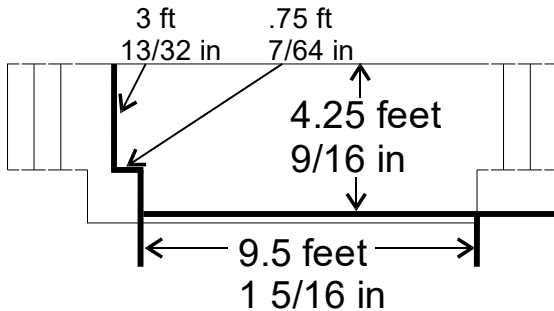
6. Shingle roof pieces except roof cap
7. Apply roof and roof cap



8. Add porch base frame. The side pieces interlock with the foundation and forward most piece. Add steps as well.



9. The deck itself came out too big. My apologies for this. It's fixed for the next cutting. The wide part on the left is the same size as a step. Once cut, it can be glued in place. See next page for sizes.



10. Cut the porch roof to the same 9.5 scale feet or 1 5/16 inches.
11. Cut the porch posts to their desired height. I used 7 scale feet or 31/32 inches.
12. Cut the porch railing to fit between the porch posts as desired. Mine was 8.5 scale feet or 1 11/64 inches.
13. I'd recommend gluing the posts and railing together before installing. While you're at it, cut and install the 3/32 wide stripwood to fit on top.
14. Add the two triangular pieces on either side of the under-side of the porch roof.
15. Once everything is dried, glue down the railing and posts, followed by the porch roof.
16. Add the signs as you desire.

Please share your photos on our Facebook page!  
<https://www.facebook.com/ConowingoModels>

Once again, thank you for your purchase!

If there are any parts missing, please e-mail us what you need to complete the kit and we'll send it your way. Suggestions for improvement are welcome.

Visit the Conowingo Models website  
[www.conowingomodels.com](http://www.conowingomodels.com) for more exciting, funky buildings for your model railroad!

Many thanks to my family, Jeff Grove, Steve Milley, Greg Cassidy and Mark Schreier for their support!

