

# Conowingo Models



## CARMASSI'S MOTOR SCOOTERS



In HO scale



[www.conowingomodels.com](http://www.conowingomodels.com)  
<https://www.facebook.com/ConowingoModels/>  
railrunner130@hotmail.com

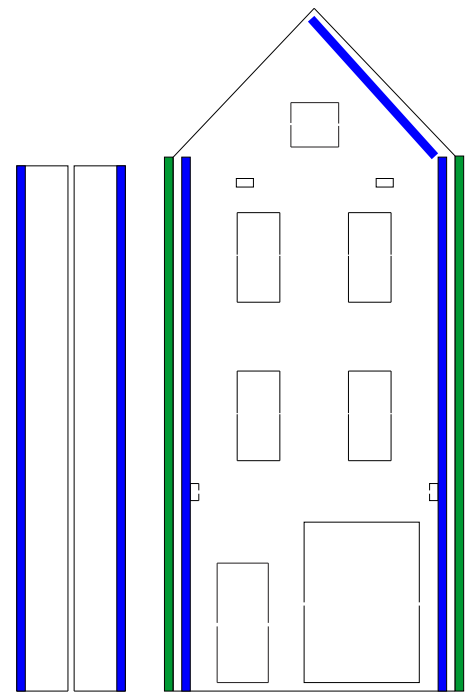
Thank you for purchasing this kit!

Carmassi's is a purely fictional background flat building. I wanted to do a background flat that was trackside and had some basic style to it.

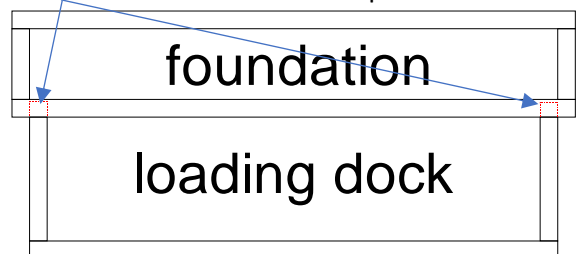
See [conowingomodels.com](http://conowingomodels.com) for more info and tips on the instructions below.

### **BUILDING**

1. Bracing – Begin with the 1/8 stripwood. Because of the horizontal clapboard, you'll need to brace vertically. The bracing is in blue. The corner pieces are shown in green and will be installed on step 6. I wouldn't put those on until after the building is painted. Ensure that the bracing goes to the bottom and will be even with the rest of the pieces once assembled.



2. Paint – While waiting for the bracing to dry, paint everything except the main building and two side pieces.
3. Put the foundation together. The pieces are arranged on the sheet to be mostly self-explanatory. The three deck pieces fit together and attach into the slots. The foundation has four pieces of basswood.



4. When the glue for the bracing is dry, paint the building and side pieces.
5. Shingle the roof except roof caps and the overhang.
6. Attach the corner pieces to the front. Leave those pieces a little long at the top. I've found that clamping the corner pieces in place eliminates gaps. Rubber bands can work, but require more effort.
7. Once dry, cut the corner pieces to be even with the slope of the roof. (At an angle, not level.)

8. Use the front piece as a template to outline or cut out (depending on your confidence level) the backing piece of construction paper. Leave it slightly longer at the top to compensate for the roof piece. If you did the outline, go ahead and cut.

See

9. Glue the side pieces into place as shown below. The bracing should be at the back of the structure. Use your favorite technique to square it up. This is so that the construction paper will have a larger surface area to adhere to. NOT YET THOUGH!



10. Apply the glazing to the windows and doors using your window glue of choice.

11. While you're waiting for the windows to dry, cut and install the curtains or shades as you see fit. Since Carmassi's is a business, I only used shades.

12. Install the doors and windows.

13. Apply the construction paper. You can trim at this stage, but it might be better to wait until the glue is dry.

14. Install the support for the overhang and the decorative piece near the top. (And the birdhouse if you are so inclined.)

15. Apply roof, overhang and roof cap

16. Apply the sign as desired

17. Glue the building to the foundation. The bracing supports the building on the foundation. The sides should overhang the foundation by the width of the wood, giving a more realistic look to it.

18. Add the decking to the loading dock.

19. Please share your photos on our Facebook page!

<https://www.facebook.com/ConowingoModels>

Once again, thank you for your purchase!

If there are any parts missing, please e-mail me what you need to complete the kit and I'll send it your way. Also suggestions for improvement are welcome.

Visit the Conowingo Models website - [www.conowingomodels.com](http://www.conowingomodels.com) for more exciting, funky buildings and rolling stock for your model railroad!

Many thanks to Jeff Grove, Steve Milley and Mark Schreier for their support!

