

Conowingo Models



Kenny's Place

HO scale



www.conowingomodels.com
<https://www.facebook.com/ConowingoModels/>
railrunner130@hotmail.com



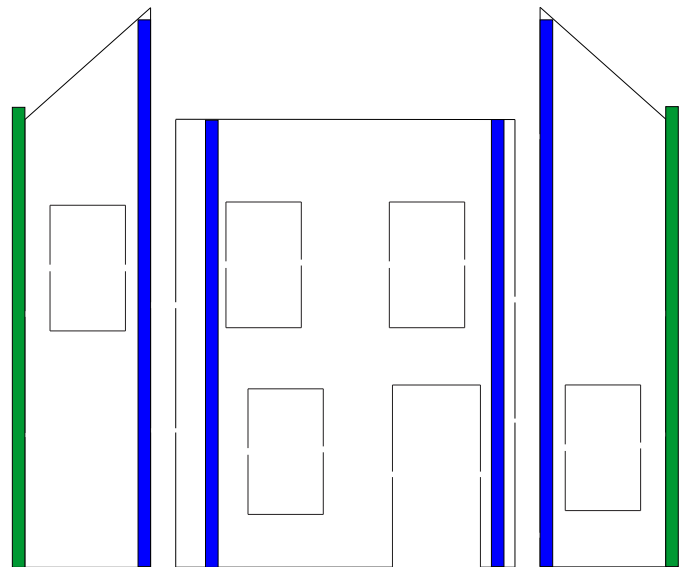
Thank you for purchasing this kit!

Kenny's is a purely fictional background flat building. I wanted to do a background flat that could be fairly universal and easily adaptable to many locations. If it were real, most likely it would be white with either black, white or green trim and may have a porch.

See conowingomodels.com for more info and tips on the instructions below.

BUILDING

1. Bracing – Begin with the 1/8 stripwood. Because of the horizontal clapboard, you'll need to brace vertically. The bracing is in blue. The corner pieces are shown in green and will be installed on step 5. I wouldn't put those on until after the building is painted. Ensure that the bracing goes to the bottom and will be even with the rest of the pieces once assembled.
 - Note the side pieces on the following diagram are shown so that you are looking at the non-clapboard side. Also see step 7 for a downward look at how the bracing should look when complete.



2. Paint – While waiting for the bracing to dry, paint everything except the main building and two side pieces.
3. When the glue for the bracing is dry, paint the building and side pieces.
4. Shingle the roof piece except roof caps.
5. Attach the corner pieces to the side pieces. Leave those pieces a little long at the top. I've found that clamping the corner pieces in place eliminates gaps. Rubber bands can work, but require more effort.
6. Once dry, cut the corner pieces and bracing to be even with the slope of the roof. (At an angle, not level.)
7. Glue the side pieces into place as shown below. The bracing should be at the back of the structure. Use your favorite technique to square it up. This is so that the construction paper will have a larger surface area to adhere to. NOT YET THOUGH!



8. Apply the glazing to the windows and doors using your window glue of choice.
9. Use the front piece as a template to outline or cut out (depending on your confidence level) the backing piece of construction paper. The top will be straight

across from the corners. If you did the outline, go ahead and cut.

10. While you're waiting for the windows to dry, cut and install the curtains or shades as you see fit.
11. Install the door and windows.
12. Apply the construction paper. You can trim at this stage, but it might be better to wait until the glue is dry.
13. Apply roof and roof cap. Use the roof cap also to fill the gap between the inner and outer pieces of roof.
14. Please share your photos on our Facebook page!
<https://www.facebook.com/ConowingoModels>

Once again, thank you for your purchase!

If there are any parts missing, please e-mail me what you need to complete the kit and I'll send it your way. Suggestions for improvement are welcome.

See the Conowingo Models website
www.conowingomodels.com
for more exciting, funky buildings for your model railroad!

Many thanks to Jeff Grove, Steve Milley and Mark Schreier for their support!



** Kit does not come with the trim on the sides. It should not be needed. If it does, please let me know and I'll add it to the kits.