

Conowingo Models



GOLD DUST BANK BACKGROUND FLAT



HO scale

www.conowingomodels.com

<https://www.facebook.com/ConowingoModels/>

conowingomodels@yahoo.com

January, 2026

Thank you for purchasing this kit!

Enclosed is a background flat from our town of Gold Dust series.

Please feel free to make variations and use the structures for other than what we intended them.



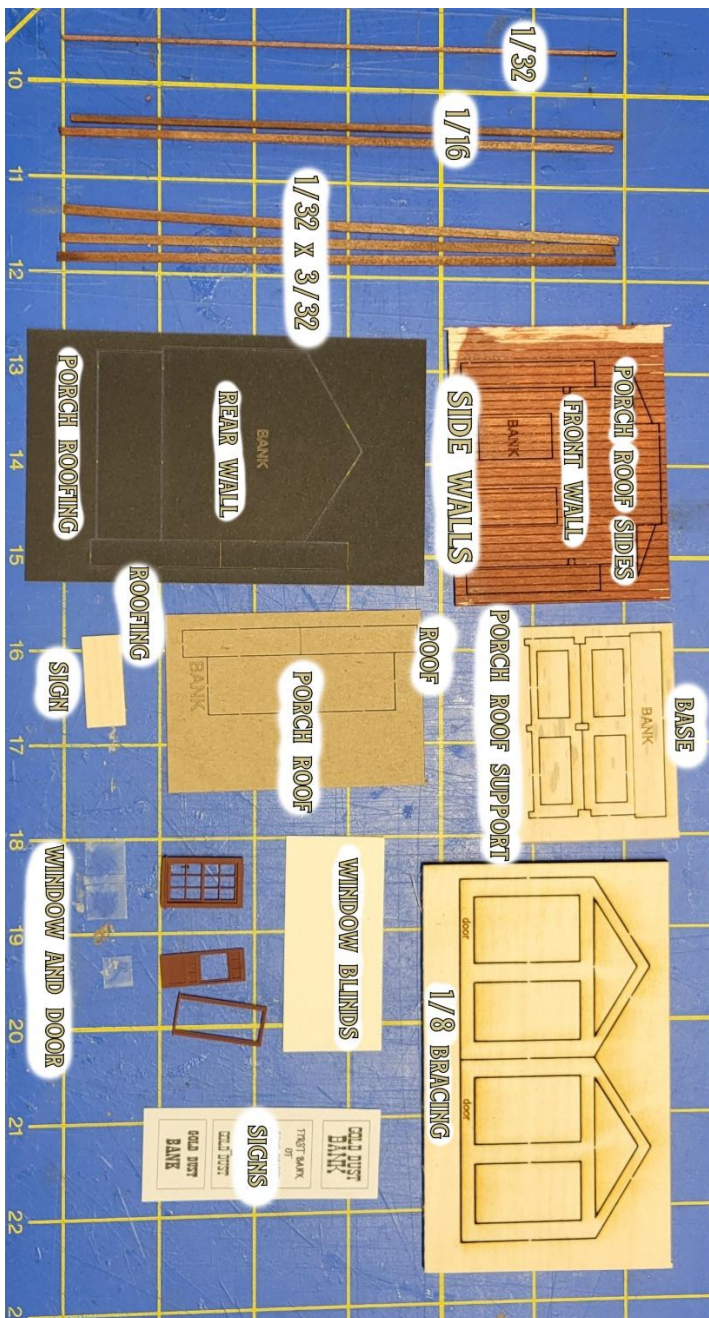
Important Notes

- This structure is fictional and intended as a background flat to add depth to a layout.
- These instructions intentionally move around to keep you progressing. **Do not get too far ahead**, as you may miss a step.

INDEX

INDEX.....	1
Kit Contents	2
Window Glazing.....	2
Prepare the Roofing Material (Construction Paper)	2
Prepare the Roofing (Chipboard)	3
Install the Window Blinds	3
Bracing Installation	4
Corner Bracing	4
Porch Roof Assembly	4
Structure Assembly.....	5
Adding the Base	6
Decking	6
Door and Window Installation	6
Porch Roof Installation.....	7
Building Roof Installation.....	7
Trim Installation.....	7
Porch Support Installation	8
Sign	8
Frame the Sign (Optional)	8
Finishing Touches.....	9

Kit Contents



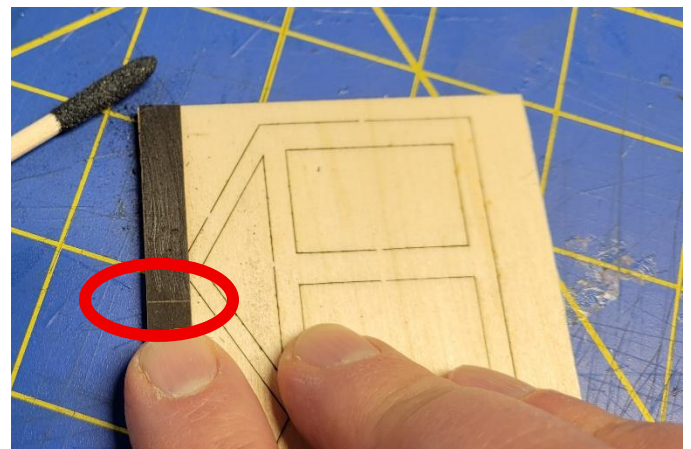
Window Glazing



1. Glue the door into the door frame from behind.
2. Cut and prepare the acetate pieces.
 - The window uses the two larger acetate pieces.
 - The door uses the single smaller acetate piece.
 - Trim each glazing piece slightly for a proper fit.
 - The window glazing for the door sits on top of the door opening.
3. Place the acetate into position.
4. Secure with **small amounts of glue in the corners only.**

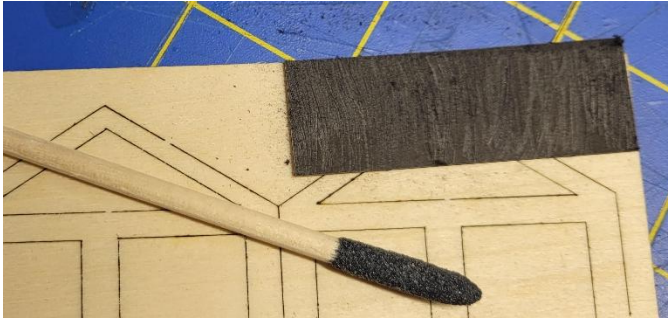
Prepare the Roofing Material (Construction Paper)

1. Cut out both roofing pieces from the construction paper.



2. Identify the thinner piece for the main building roof.

- It has a score line in the center.
- **Do not cut this line;** it represents the roof ridge.



3. Place the porch roof piece on the 1/8" bracing sheet (or similar backing).
4. Using a sanding stick, sand vertically to age the roofing material.
5. Repeat this process for the building roof piece.

Prepare the Roofing (Chipboard)

1. Cut out both roof pieces from the chipboard sheet.
2. Bend the building roof piece along the score line.

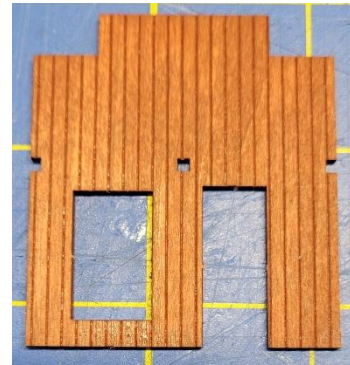


3. Test-fit the roofing material.
 - **Building roof:** Align both pieces at the score line. There will be overlap at each end—this will be addressed later.
 - **Porch roof:** Place overhang in one side. this area will contact the structure.

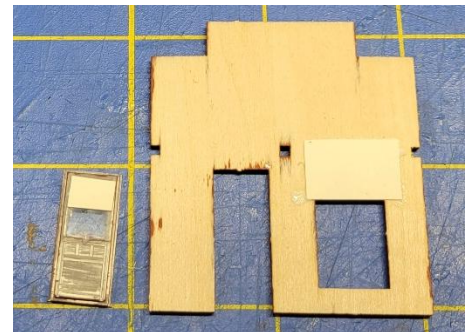


4. Apply glue to the chipboard roof pieces.
5. Glue the pieces together and weight them using 3-2-1 blocks if available.

Install the Window Blinds



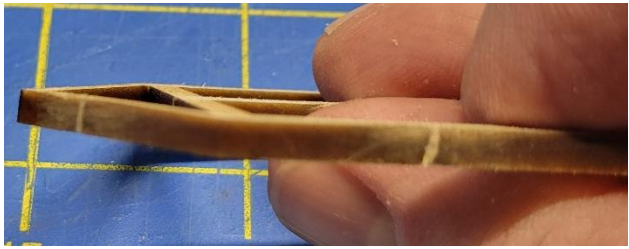
1. Cut out the front wall of the structure.



2. Cut a piece of window blind material to fit the front door opening.
3. Glue the blind into place on the door, **avoiding contact with the acetate.**
 - Length is your choice.
4. Cut a second piece of blind material for the front window.
 - Length is your choice.
5. Glue the blind material over the window opening as shown above.

Bracing Installation

1. Cut out both bracing pieces from the 1/8 basswood tray.



2. Sand down the bracing tabs thoroughly—this step is critical for a good fit.
3. Cut out the construction paper for the back wall.



4. Fit the bracing to the walls.
 - **Back wall:** Ensure the wall marked “Bank” is visible. Match the roof peaks. Expect overhang on the sides and bottom. The word “door” on the bracing faces up.
 - **Front wall:** Fits flush on sides and bottom. The word “door” faces up.
5. Once satisfied, glue the bracing to each wall.

Corner Bracing

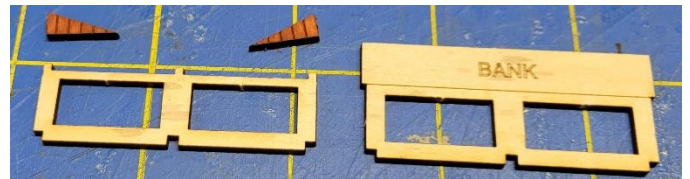


1. Using 1/16" x 1/16" stripwood, measure and cut two corner braces.
2. Sand the tabs on the front wall as needed.

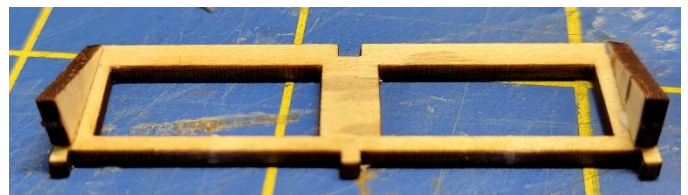


3. Glue the corner bracing into place.

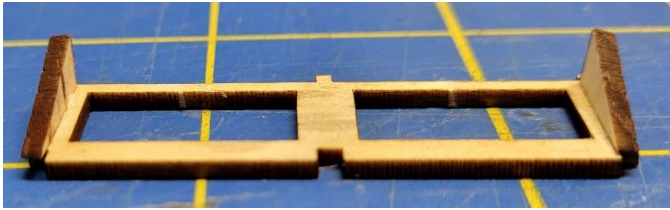
Porch Roof Assembly



1. Cut out the porch roof and porch base pieces.
2. Cut out the two porch roof sides. (Triangular pieces)

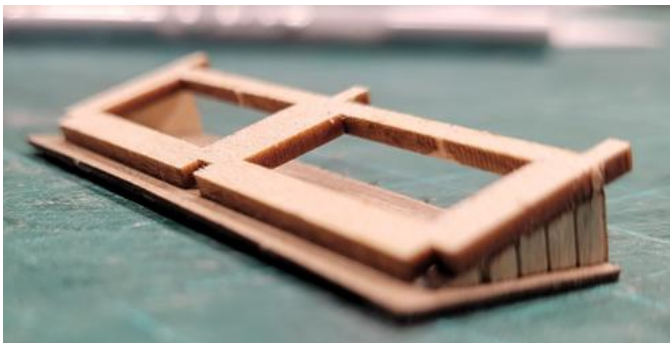
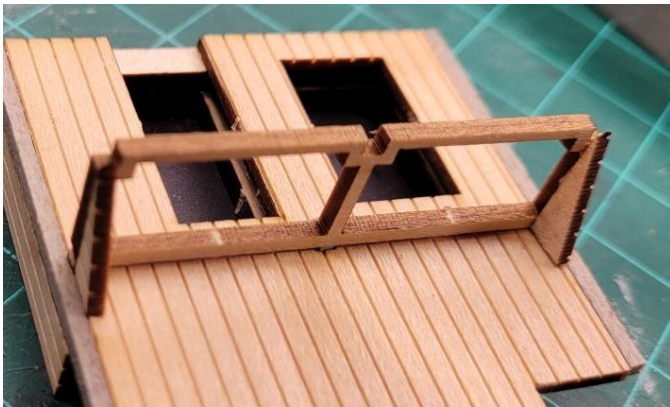


3. Sand tabs as needed, **except for the three tabs facing the camera.**
4. Identify correct orientation on the porch roof sides:
 - The scribed lines must run vertically.
 - If angled, the piece is upside down or on the wrong side.



5. Glue the porch roof sides into place.
 - Do not cover the tabs.
 - Cover the forward cutouts as shown in the reference photos.

Photos below are for future reference only. Make sure what you did above will allow what you see below.



Structure Assembly

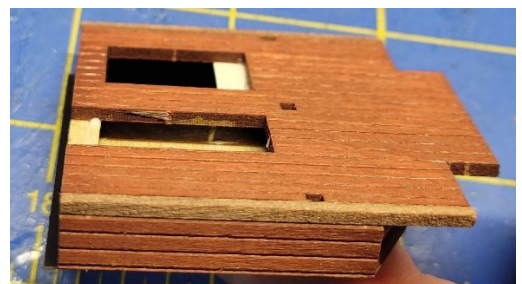
1. Cut out the two side walls.
2. Sand tabs as necessary.



3. Apply glue to the bracing on the front wall.
4. Attach the back wall to the front wall, ensuring the assembly is square.

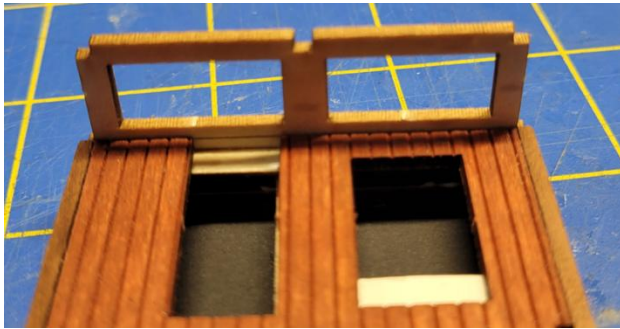


5. Glue the side walls into place, aligning the bottoms with the base of the structure.



Adding the Base

1. Ensure the bottom of the structure is flat; sand or trim if needed.



2. Fit the base.
 - It should sit against the rear construction paper and the bottom of the front wall.
 - Do not include the corner bracing.
 - A scribed line will cross the door threshold.
3. Glue the base in place, ensuring the structure sits flat and square.

- Approx. 0.50"; cut **3 pieces** and set aside.
3. Measure the next decking length (blue reference).
 - Approx. 0.58"; cut **13 pieces**.
 - Keep these separate from other deck boards.
 4. Measure the final decking length (green reference) to fit under where the door will go.
 - Approx. 0.64"; cut **3 pieces**.
 5. Apply glue to the entire deck surface.
 6. Add decking as shown. Be sure to space the boards so they all fit.

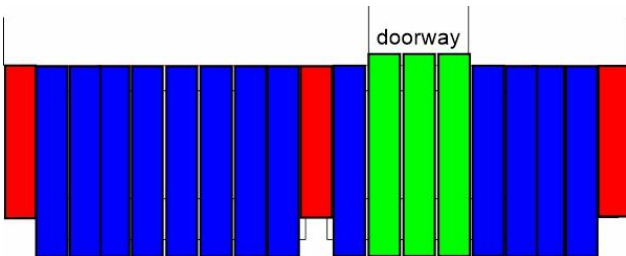
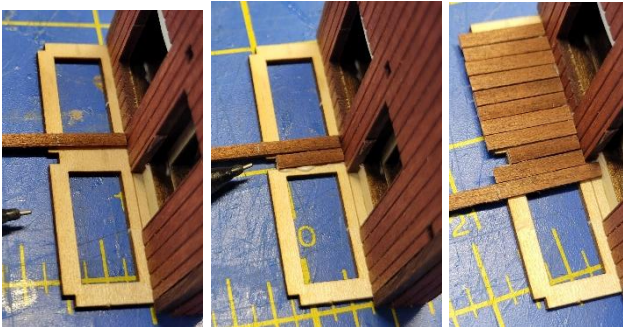
Door and Window Installation



1. Apply glue along the inside edges of the window and door frames.
2. Install the window with the sill facing down.
3. Install the door, centering it vertically.
 - The opening is slightly tall; centering helps disguise this.

Decking

1. You will need two pieces of 1/32" x 3/32" stripwood for this step.



2. Measure the distance between the front wall and the center porch support (red reference).

Porch Roof Installation



1. Bend the excess construction paper on the porch roof upward.

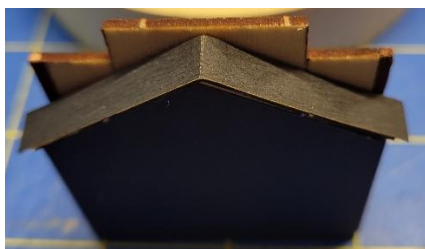


2. Glue the porch roof support into place. It will be snug.
 - Ensure side supports contact the structure.
3. Apply glue to the upper sides of the support.



4. Add a small amount of glue to the bent construction paper on the porch roof.
5. Install the porch roof, centering it carefully.
6. Hold the roof in place until secure against the support and front wall.

Building Roof Installation



1. Glue the building roof into position.

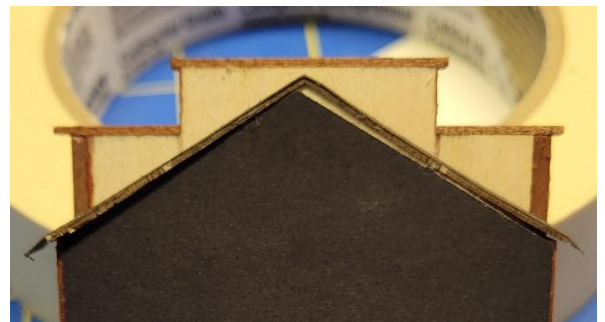
2. Apply pressure until fully bonded.
3. Optional: Trim the lower roof edges.
 - If trimmed, re-sand the roofing material to maintain an aged appearance.

Trim Installation

Use the last piece of 1/32" x 3/32" stripwood for this step.



1. Cut the top trim piece (approx. 1.17").
2. Cut two side trim pieces (approx. 0.55").
3. Sand the top of the corner bracing flush with the front wall.



4. Glue all trim pieces in place, ensuring the backside remains flat.

Porch Support Installation

Use the last piece of 1/16" x 1/16" stripwood for this step.



1. Measure and cut one porch support to fit in the notches at top and bottom. (approx. 1.25").
2. Glue support into position. It may be a tight fit.
3. Repeat for both remaining supports.
4. Sand excess at the bottom if necessary.

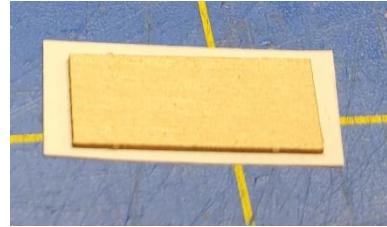
Sign

1. Select one of the five provided sign designs (or substitute your own later).



2. Cut the sign slightly larger than the 1/32" basswood backing.

3. Sand the edges of the basswood to remove bumps.
4. Coat the basswood with glue.
5. Apply the paper sign carefully, keeping it straight.



6. Flip over and trim excess paper.



7. Flip again and trim to remove any remaining white edges.

Frame the Sign (Optional)

1. Use the single piece of 1/32" x 1/32" stripwood.
 - Handle carefully; it is fragile.
2. Apply a small bead of glue around the sign edges.



3. Cut and install the bottom strip slightly longer than the sign. The piece above broke before we were able to trim it, so we went with it.
4. Add vertical side pieces, flush with the top of the sign.



5. Add the top strip.



6. Trim excess and glue the sign in place as desired.

Finishing Touches



(Top) Before stain touch-up.



After stain touch-up.

1. Using a brush, apply Hunterline Rust stain (or preferred color) to:
 - Base edges
 - Underside of porch supports
 - Decking edges
2. Optionally apply stain to the sign to tone it down.

Please share your photos on our Facebook page!

<https://www.facebook.com/ConowingoModels>

Once again, thank you for attending this clinic!

If you are at home and there are any parts missing, please e-mail us what you need to complete the kit and we'll send it your way. Suggestions for improvement are welcome. You will notice that there is a date on the first page of the instructions. As we improve our instructions, we update the date and add them to the website for download.

See the Conowingo Models website
www.conowingomodels.com

for more exciting, funky buildings for your model railroad!

Many thanks to my family, Jeff Grove, Steve Milley, Mike Dettinger and Mark Schreier for their support!