

ALESSI

BOWLS, BASKETS & TRAYS COLLECTION



📍 **ALESSI USA**, 41 Madison Avenue, 6th Floor, New York, NY 10010

☎ **+1 (718) 213-5304**

🌐 **www.alessi.com**

✉ **david.dimeco@alessi.com**



Port Round Basket

BASKET IN 18/10 STAINLESS STEEL.

CODE 90085 **LIST** \$210.00

Port basket has been designed by Lluís Clotet, who is especially active in architecture but who has also made a number of interesting designs of objects, was fascinated by the playful crumpling of a tray in silver paper and reproduced the effect in a successful mini-series of trays and baskets, in which the crumpled edge is achieved using a complex technique of cold-pressing in a single operation

- Quick ship USA



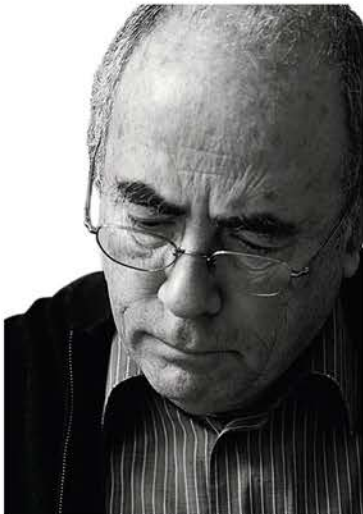
DIMENSIONS

PRODUCT

H: 2.36"

D: 14.57"

DESIGNER



LLUÍS CLOTET

Born in Barcelona in 1941. He receives the architecture degree in the "Escuela Técnica Superior de Arquitectura" of Barcelona in 1965. In that school, he was a drawing teacher from 1977 to 1984. In 1964 he founds Studio Per in cooperation with the architects Pep Bonet, Cristian Cirici and Oscar Tusquets. With the latter, he collaborates in multiple projects until 1983. In 1984, he joins in partnership with Ignacio Paricio for the architectonic production until the year 2008. He is also a founding partner of the firm "B.D Ediciones de Diseño" There are collections of his work in many museums.

📍 **ALESSI USA**, 41 Madison Avenue, 6th Floor, New York, NY 10010

☎ **+1 (718) 213-5304**

🌐 **www.alessi.com**

✉ **david.dimeco@alessi.com**

ALESSI



Resonance Fruit Holder

FRUIT HOLDER IN 18/10 STAINLESS STEEL

CODE ABI02 **LIST** \$230.00

A design that reveals young Australian designer Abi Alice's interest in mathematics and geometry, translated into sculptured three-dimensional forms by cutting, folding and curving sheet steel.

- Quick ship USA



DIMENSIONS

PRODUCT

H: 2.28"

D: 14.97"

DESIGNER



ABI ALICE

Her artistic practice extends across a range of creative disciplines, from painting, photography and sculpture to sound and design. Mathematics, geometry, colour and form are frequently explored in her work. Alice has undergraduate and postgraduate qualifications in fine art. In many instances her abstract paintings are the foundation for her product design. Alice's work is represented in public and private collections around the world, including the Victoria and Albert Museum in London.

📍 **ALESSI USA**, 41 Madison Avenue, 6th Floor, New York, NY 10010

☎ **+1 (718) 213-5304**

🌐 **www.alessi.com**

✉ **david.dimeco@alessi.com**



Harmonic Basket

BASKET IN 18/10 STAINLESS STEEL.

CODE ABI03 **LIST** \$175.00

A design that reveals young Australian designer Abi Alice's interest in mathematics and geometry, translated into sculptured three-dimensional forms by cutting, folding and curving sheet steel.

- Quick ship USA



DIMENSIONS

PRODUCT

H: 4.33"

D: 8.66"

DESIGNER



ABI ALICE

Her artistic practice extends across a range of creative disciplines, from painting, photography and sculpture to sound and design. Mathematics, geometry, colour and form are frequently explored in her work. Alice has undergraduate and postgraduate qualifications in fine art. In many instances her abstract paintings are the foundation for her product design. Alice's work is represented in public and private collections around the world, including the Victoria and Albert Museum in London.

📍 **ALESSI USA**, 41 Madison Avenue, 6th Floor, New York, NY 10010

☎ **+1 (718) 213-5304**

🌐 **www.alessi.com**

✉ **david.dimeco@alessi.com**

ALESSI



Pianissimo Basket

BASKET IN 18/10 STAINLESS STEEL.

CODE ABI04 **LIST** \$120.00

The "Pianissimo" basket joins the two "Resonance" (the 2006 centrepiece and the 2008 fruit holder) and the "Harmonic" basket (2008) created by the same Australian designer. As in all her projects, Abi uses geometric artistic drawings as a basis to create three-dimensional sculptured objects, subjecting the sheet steel to successive cutting, folding and curving operations.

- Quick ship USA



DIMENSIONS

PRODUCT

H: 2.56"

D: 6.89"

DESIGNER



ABI ALICE

Her artistic practice extends across a range of creative disciplines, from painting, photography and sculpture to sound and design. Mathematics, geometry, colour and form are frequently explored in her work. Alice has undergraduate and postgraduate qualifications in fine art. In many instances her abstract paintings are the foundation for her product design. Alice's work is represented in public and private collections around the world, including the Victoria and Albert Museum in London.

📍 **ALESSI USA**, 41 Madison Avenue, 6th Floor, New York, NY 10010

☎ **+1 (718) 213-5304**

🌐 **www.alessi.com**

✉ **david.dimeco@alessi.com**



Octave Bread Basket

BREAD AND BREADSTICK BASKET IN 18/10 STAINLESS STEEL.

CODE ABI05 **LIST** \$160.00

“Octave” by Abi Alice is produced simply by cutting, bending and welding specific areas of an 18/10 stainless steel sheet and the result is an elegant container for the table suitable for serving bread or breadsticks. The polished finishing enhances the sophisticated simplicity of the object. This project reflects the Abi Alice's interest in mathematics and geometry. With “Octave” the designer explores the potential ability of the ellipse to create harmonic and proportionate forms. In music, an octave is the interval between one tone and another. These new objects were created using this ratio, which corresponds to a musical octave: the inspiration behind the name of the project.

- Quick ship USA



DIMENSIONS

PRODUCT

H: 1.77"

L: 16.35"

W: 6.89"

DESIGNER



ABI ALICE

Her artistic practice extends across a range of creative disciplines, from painting, photography and sculpture to sound and design. Mathematics, geometry, colour and form are frequently explored in her work. Alice has undergraduate and postgraduate qualifications in fine art. In many instances her abstract paintings are the foundation for her product design. Alice's work is represented in public and private collections around the world, including the Victoria and Albert Museum in London.

📍 **ALESSI USA**, 41 Madison Avenue, 6th Floor, New York, NY 10010

☎ **+1 (718) 213-5304**

🌐 **www.alessi.com**

✉ **david.dimeco@alessi.com**

ALESSI



Achille Castiglioni Fruit Bowl Colander, Black

FRUIT BOWL/COLANDER IN STEEL MIRROR POLISHED. FOOT IN ALUMINIUM, ANTHRACITE.

CODE AC04 **LIST** \$320.00

With this design, an excellent and rare case of a new object made from fusing two classic household objects - fruit holder and colander - Achille Castiglioni won the "Young Creator of the Year" award from the Conseil National des Arts Culinaires de Paris in 1995. Castiglioni was 77 years of age at the time.

- Quick ship USA



DIMENSIONS

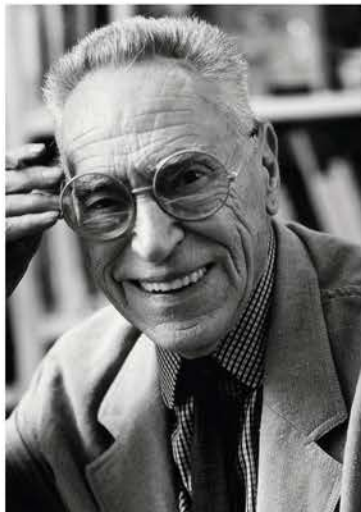
PRODUCT

C: 50.7 fl oz

H: 8.07"

D: 9.85"

DESIGNER



ACHILLE CASTIGLIONI

Born in Milan in 1918, he started work as an architect and designer with his brothers Livio and Pier Giacomo in 1938. One of the great masters of Italian design, he was a founding member of ADI in the fifties. The long list of awards he has received include eight Compassi d'Oro. His activity as a designer is an unmistakable blend of simplicity, irony and fun and it shows his close interest in the way objects are used, in the potential offered by technology and in the use of new materials. He dies in 2002.

📍 **ALESSI USA**, 41 Madison Avenue, 6th Floor, New York, NY 10010

☎ **+1 (718) 213-5304**

🌐 **www.alessi.com**

✉ **david.dimeco@alessi.com**

ALESSI



Trinity Collection Centerpiece, Medium

CENTREPIECE IN 18/10 STAINLESS STEEL.

CODE ACO01 **LIST** \$320.00

The dynamic formal rhythm of the "Trinity" basket designed by Adam Cornish draws inspiration from the sinuous spiral structure of the shell of the "Nautilus" mollusc. The designer wanted to recreate the appearance of a natural element through modern industrial production processes.

- Quick ship USA



DIMENSIONS

PRODUCT

H: 3.94"

D: 16.94"

DESIGNER



ADAM CORNISH

Adam Cornish's work is born of simple observational based design. Just like animals and plants; products need to evolve and adapt to better suit the continually changing environment. Adam studied Industrial Design at the University of Technology Sydney and more recently, completed a degree in Furniture Design at Royal Melbourne's Institute of Technology, where Adam regularly lectures. The scope of Adam's work includes an impressive range of design disciplines, including furniture and household innovation, as well as complex commercial and residential installations.

📍 **ALESSI USA**, 41 Madison Avenue, 6th Floor, New York, NY 10010

☎ **+1 (718) 213-5304**

🌐 **www.alessi.com**

✉ **david.dimeco@alessi.com**

ALESSI



Trinity Collection Fruit Holder, Large

FRUIT BOWL IN 18/10 STAINLESS STEEL.

CODE ACO03 **LIST** \$260.00

The dynamic formal rhythm of the "Trinity" basket designed by Adam Cornish draws inspiration from the sinuous spiral structure of the shell of the "Nautilus" mollusc. The designer wanted to recreate the appearance of a natural element through modern industrial production processes.

- Quick ship USA



DIMENSIONS

PRODUCT

H: 3.15"

D: 13.00"

DESIGNER



ADAM CORNISH

Adam Cornish's work is born of simple observational based design. Just like animals and plants; products need to evolve and adapt to better suit the continually changing environment. Adam studied Industrial Design at the University of Technology Sydney and more recently, completed a degree in Furniture Design at Royal Melbourne's Institute of Technology, where Adam regularly lectures. The scope of Adam's work includes an impressive range of design disciplines, including furniture and household innovation, as well as complex commercial and residential installations.

📍 **ALESSI USA**, 41 Madison Avenue, 6th Floor, New York, NY 10010

☎ **+1 (718) 213-5304**

🌐 **www.alessi.com**

✉ **david.dimeco@alessi.com**

ALESSI



Trinity Collection Fruit Holder, Large, Black

FRUIT BOWL IN STEEL COLOURED WITH EPOXY RESIN, BLACK.

CODE ACO03 B **LIST** \$160.00

The dynamic formal rhythm of the "Trinity" basket designed by Adam Cornish draws inspiration from the sinuous spiral structure of the shell of the "Nautilus" mollusc. The designer wanted to recreate the appearance of a natural element through modern industrial production processes.

- Quick ship USA



DIMENSIONS

PRODUCT

H: 3.15"

D: 13.00"

DESIGNER



ADAM CORNISH

Adam Cornish's work is born of simple observational based design. Just like animals and plants; products need to evolve and adapt to better suit the continually changing environment. Adam studied Industrial Design at the University of Technology Sydney and more recently, completed a degree in Furniture Design at Royal Melbourne's Institute of Technology, where Adam regularly lectures. The scope of Adam's work includes an impressive range of design disciplines, including furniture and household innovation, as well as complex commercial and residential installations.

📍 **ALESSI USA**, 41 Madison Avenue, 6th Floor, New York, NY 10010

☎ **+1 (718) 213-5304**

🌐 **www.alessi.com**

✉ **david.dimeco@alessi.com**



Trinity Collection Basket, Small, Black

BASKET IN STEEL COLOURED WITH EPOXY RESIN,
BLACK.

CODE ACO02 B **LIST** \$135.00

The dynamic formal rhythm of the "Trinity" basket designed by Adam Cornish draws inspiration from the sinuous spiral structure of the shell of the "Nautilus" mollusc. The designer wanted to recreate the appearance of a natural element through modern industrial production processes.

- Quick ship USA



DIMENSIONS

PRODUCT

H: 2.76"

D: 10.24"

DESIGNER



ADAM CORNISH

Adam Cornish's work is born of simple observational based design. Just like animals and plants; products need to evolve and adapt to better suit the continually changing environment. Adam studied Industrial Design at the University of Technology Sydney and more recently, completed a degree in Furniture Design at Royal Melbourne's Institute of Technology, where Adam regularly lectures. The scope of Adam's work includes an impressive range of design disciplines, including furniture and household innovation, as well as complex commercial and residential installations.

📍 **ALESSI USA**, 41 Madison Avenue, 6th Floor, New York, NY 10010

☎ **+1 (718) 213-5304**

🌐 **www.alessi.com**

✉ **david.dimeco@alessi.com**

ALESSI



Trinity Collection Centerpiece, Medium

CENTREPIECE IN 18/10 STAINLESS STEEL.

CODE ACO01 **LIST** \$320.00

The dynamic formal rhythm of the "Trinity" basket designed by Adam Cornish draws inspiration from the sinuous spiral structure of the shell of the "Nautilus" mollusc. The designer wanted to recreate the appearance of a natural element through modern industrial production processes.

- Quick ship USA



DIMENSIONS

PRODUCT

H: 3.15"

D: 13.00"

DESIGNER



ADAM CORNISH

Adam Cornish's work is born of simple observational based design. Just like animals and plants; products need to evolve and adapt to better suit the continually changing environment. Adam studied Industrial Design at the University of Technology Sydney and more recently, completed a degree in Furniture Design at Royal Melbourne's Institute of Technology, where Adam regularly lectures. The scope of Adam's work includes an impressive range of design disciplines, including furniture and household innovation, as well as complex commercial and residential installations.

📍 **ALESSI USA**, 41 Madison Avenue, 6th Floor, New York, NY 10010

☎ **+1 (718) 213-5304**

🌐 **www.alessi.com**

✉ **david.dimeco@alessi.com**

ALESSI



Trinity Collection Centerpiece, Medium

CENTREPIECE IN 18/10 STAINLESS STEEL.

CODE ACO01 **LIST** \$320.00

The dynamic formal rhythm of the "Trinity" basket designed by Adam Cornish draws inspiration from the sinuous spiral structure of the shell of the "Nautilus" mollusc. The designer wanted to recreate the appearance of a natural element through modern industrial production processes.

- Quick ship USA



DIMENSIONS

PRODUCT

H: 3.15"

D: 13.00"

DESIGNER



ADAM CORNISH

Adam Cornish's work is born of simple observational based design. Just like animals and plants; products need to evolve and adapt to better suit the continually changing environment. Adam studied Industrial Design at the University of Technology Sydney and more recently, completed a degree in Furniture Design at Royal Melbourne's Institute of Technology, where Adam regularly lectures. The scope of Adam's work includes an impressive range of design disciplines, including furniture and household innovation, as well as complex commercial and residential installations.

📍 **ALESSI USA**, 41 Madison Avenue, 6th Floor, New York, NY 10010

☎ **+1 (718) 213-5304**

🌐 **www.alessi.com**

✉ **david.dimeco@alessi.com**

ALESSI



Trinity Collection Citrus Basket, 12, Black

CITRUS BASKET IN STEEL COLOURED WITH EPOXY RESIN, BLACK.

CODE ACO04/12 B **LIST** \$135.00

The dynamic formal rhythm of the "Trinity" basket designed by Adam Cornish draws inspiration from the sinuous spiral structure of the shell of the "Nautilus" mollusc. The designer wanted to recreate the appearance of a natural element through modern industrial production processes.

- Quick ship USA



DIMENSIONS

PRODUCT

H: 4.73"

D: 10.24"

DESIGNER



ADAM CORNISH

Adam Cornish's work is born of simple observational based design. Just like animals and plants; products need to evolve and adapt to better suit the continually changing environment. Adam studied Industrial Design at the University of Technology Sydney and more recently, completed a degree in Furniture Design at Royal Melbourne's Institute of Technology, where Adam regularly lectures. The scope of Adam's work includes an impressive range of design disciplines, including furniture and household innovation, as well as complex commercial and residential installations.

📍 **ALESSI USA**, 41 Madison Avenue, 6th Floor, New York, NY 10010

☎ **+1 (718) 213-5304**

🌐 **www.alessi.com**

✉ **david.dimeco@alessi.com**



Trinity Collection Citrus Basket, 16, Black

CITRUS BASKET IN STEEL COLOURED WITH EPOXY RESIN, BLACK.

CODE ACO04/16 B **LIST** \$170.00

The dynamic formal rhythm of the "Trinity" basket designed by Adam Cornish draws inspiration from the sinuous spiral structure of the shell of the "Nautilus" mollusc. The designer wanted to recreate the appearance of a natural element through modern industrial production processes.

- Quick ship USA



DIMENSIONS

PRODUCT

H: 6.50"

D: 13.00"

DESIGNER



ADAM CORNISH

Adam Cornish's work is born of simple observational based design. Just like animals and plants; products need to evolve and adapt to better suit the continually changing environment. Adam studied Industrial Design at the University of Technology Sydney and more recently, completed a degree in Furniture Design at Royal Melbourne's Institute of Technology, where Adam regularly lectures. The scope of Adam's work includes an impressive range of design disciplines, including furniture and household innovation, as well as complex commercial and residential installations.

📍 **ALESSI USA**, 41 Madison Avenue, 6th Floor, New York, NY 10010

☎ **+1 (718) 213-5304**

🌐 **www.alessi.com**

✉ **david.dimeco@alessi.com**

ALESSI



Girotondo Collection Pierced Basket

OPEN-WORK BASKET IN 18/10 STAINLESS STEEL.

CODE AKK03 **LIST** \$90.00

The cartoon men created by the King-Kong team are a symbol and icon of mirror polished design based on the use of "affective codes", so much so that they are one of its most oft-cited examples. The "standing men" have appeared on objects from the farthest corners of Alessi tradition, like trays and baskets, and then they multiplied, invaded and conquered other groups of objects - and not just in the kitchen and at the table.

- Quick ship USA



DIMENSIONS

PRODUCT

H: 2.13"

D: 7.09"

DESIGNER



KING-KONG

From 1985 up to 1989, this has been the name adopted by the architects Stefano Giovannoni and Guido Venturini, creators of an elementary, playful cartoon language which made its mark on design in the early 90s.

📍 **ALESSI USA**, 41 Madison Avenue, 6th Floor, New York, NY 10010

☎ **+1 (718) 213-5304**

🌐 **www.alessi.com**

✉ **david.dimeco@alessi.com**



Girotondo Collection Basket

OPEN-WORK BASKET IN 18/10 STAINLESS STEEL.

CODE AKK04 **LIST** \$110.00

The cartoon men created by the King-Kong team are a symbol and icon of mirror polished design based on the use of "affective codes", so much so that they are one of its most oft-cited examples. The "standing men" have appeared on objects from the farthest corners of Alessi tradition, like trays and baskets, and then they multiplied, invaded and conquered other groups of objects - and not just in the kitchen and at the table.

- Quick ship USA



DIMENSIONS

PRODUCT

H: 3.47"

D: 8.07"

DESIGNER



KING-KONG

From 1985 up to 1989, this has been the name adopted by the architects Stefano Giovannoni and Guido Venturini, creators of an elementary, playful cartoon language which made its mark on design in the early 90s.

📍 **ALESSI USA**, 41 Madison Avenue, 6th Floor, New York, NY 10010

☎ **+1 (718) 213-5304**

🌐 **www.alessi.com**

✉ **david.dimeco@alessi.com**

ALESSI



Girotondo Collection Fruit Bowl

OPEN-WORK FRUIT BOWL IN 18/10 STAINLESS STEEL.

CODE AKK05 **LIST** \$140.00

The cartoon men created by the King-Kong team are a symbol and icon of mirror polished design based on the use of "affective codes", so much so that they are one of its most oft-cited examples. The "standing men" have appeared on objects from the farthest corners of Alessi tradition, like trays and baskets, and then they multiplied, invaded and conquered other groups of objects - and not just in the kitchen and at the table.

- Quick ship USA



DIMENSIONS

PRODUCT

H: 4.81"

D: 9.06"

DESIGNER



KING-KONG

From 1985 up to 1989, this has been the name adopted by the architects Stefano Giovannoni and Guido Venturini, creators of an elementary, playful cartoon language which made its mark on design in the early 90s.

📍 **ALESSI USA**, 41 Madison Avenue, 6th Floor, New York, NY 10010

☎ **+1 (718) 213-5304**

🌐 **www.alessi.com**

✉ **david.dimeco@alessi.com**

ALESSI



Girotondo Collection Bread Stick Holder

OPEN-WORK BREADSTICK HOLDER IN 18/10 STAINLESS STEEL.

CODE AKK09 **LIST** \$80.00

The cartoon men created by the King-Kong team are a symbol and icon of mirror polished design based on the use of "affective codes", so much so that they are one of its most oft-cited examples. The "standing men" have appeared on objects from the farthest corners of Alessi tradition, like trays and baskets, and then they multiplied, invaded and conquered other groups of objects - and not just in the kitchen and at the table.

- Quick ship USA



DIMENSIONS

PRODUCT

H: 5.91"

D: 3.54"

DESIGNER



KING-KONG

From 1985 up to 1989, this has been the name adopted by the architects Stefano Giovannoni and Guido Venturini, creators of an elementary, playful cartoon language which made its mark on design in the early 90s.

📍 **ALESSI USA**, 41 Madison Avenue, 6th Floor, New York, NY 10010

☎ **+1 (718) 213-5304**

🌐 **www.alessi.com**

✉ **david.dimeco@alessi.com**

ALESSI



Mini Girotondo Collection Round Plain

ROUND TRAY IN 18/10 STAINLESS STEEL MIRROR POLISHED.

CODE AKK78 **LIST** \$55.00

The "Mini Girotondo", designed by King-Kong (S.Giovanoni – G. Venturini), tray is made of mirror polished stainless steel and replicates the proportions of the "Girotondo" tray. Ideal for serving bread, pastries, hors d'oeuvres and snacks. The size of the tray is especially suitable for a single serving, such as a cup of coffee with a glass of water or a cappuccino and a croissant.

- Quick ship USA



DIMENSIONS

PRODUCT

H: 1.06"

D: 8.27"

DESIGNER



KING-KONG

From 1985 up to 1989, this has been the name adopted by the architects Stefano Giovannoni and Guido Venturini, creators of an elementary, playful cartoon language which made its mark on design in the early 90s.

📍 **ALESSI USA**, 41 Madison Avenue, 6th Floor, New York, NY 10010

☎ **+1 (718) 213-5304**

🌐 **www.alessi.com**

✉ **david.dimeco@alessi.com**



Girotondo Collection Round Tray

ROUND TRAY WITH OPEN-WORK EDGE IN 18/10 STAINLESS STEEL MIRROR POLISHED.

CODE AKKGT **LIST** \$110.00

Round tray in 18/10 stainless steel with laser cut edge. The cartoon men created by the King-Kong team are a symbol and icon of mirror polished design based on the use of "affective codes", so much so that they are one of its most oft-cited examples. The "standing men" have appeared on objects from the farthest corners of Alessi tradition, like trays and baskets, and then they multiplied, invaded and conquered other groups of objects - and not just in the kitchen and at the table.

- Quick ship USA



DIMENSIONS

PRODUCT

D: 15.75"

DESIGNER



KING-KONG

From 1985 up to 1989, this has been the name adopted by the architects Stefano Giovannoni and Guido Venturini, creators of an elementary, playful cartoon language which made its mark on design in the early 90s.

📍 **ALESSI USA**, 41 Madison Avenue, 6th Floor, New York, NY 10010

☎ **+1 (718) 213-5304**

🌐 **www.alessi.com**

✉ **david.dimeco@alessi.com**

ALESSI



Anna G. Folding Cake Stand

FOLDING CAKE STAND IN 18/10 STAINLESS STEEL.

CODE AM37 **LIST** \$330.00

The “Anna Gong” cake stand is Mendini’s tribute to the legendary folding cake stand “art. 898” that was one of Alessi’s best seller for quite some time in the 60s. “Anna Gong” has, like its predecessor, two aspects and two uses: when closed, it’s a table-top sculpture; when open, it becomes a multi-tier Cake stand that can be used at the table.

- Quick ship USA



DIMENSIONS

PRODUCT

H: 10.63"

L: 17.33"

W: 7.88"

DESIGNER



ALESSANDRO MENDINI

Alessandro Mendini (1931-2019) was an Italian designer and architect who played an important part in the development of Italian, Postmodern, and Radical design. The character of his design is marked by what was his strong interest in mixing different cultures and different forms of expression. Mendini created graphics, furniture, interiors, paintings and architecture, taught at the University of Milan, was an editor at Casabella, Modo, and Domus magazines, and collaborated with several international brands, including Philips, Swarovski, Swatch, Cartier, and Hermes.

📍 **ALESSI USA**, 41 Madison Avenue, 6th Floor, New York, NY 10010

☎ **+1 (718) 213-5304**

🌐 **www.alessi.com**

✉ **david.dimeco@alessi.com**

ALESSI



Mattina Collection Cake Stand & Dome, Red

STAND IN PORCELAIN, RED. LID IN PMMA WITH KNOB IN BAMBOO WOOD.

CODE BG06 R **LIST** \$205.00

A cake-stand with understated lines that includes great care to the functional aspects. Dedicated to baking enthusiasts who not only love to make things but also to present their creations as best as possible. A special item to offer cakes, sweets, biscuits, but also fruit or cheese.

- Quick ship USA



DIMENSIONS

PRODUCT

H: 8.47"

D: 12.45"

DESIGNER



BIG-GAME

BIG-GAME is a product and interior design studio created in 2004 by Augustin Scott de Martinville (French), Elric Petit (Belgian) and Grégoire Jeanmonod (Swiss). It is based in Lausanne, Switzerland.

📍 **ALESSI USA**, 41 Madison Avenue, 6th Floor, New York, NY 10010

☎ **+1 (718) 213-5304**

🌐 **www.alessi.com**

✉ **david.dimeco@alessi.com**

ALESSI



Mattina Collection Cake Stand & Dome, Warm Gray

STAND IN PORCELAIN, WARM GREY. LID IN PMMA WITH KNOB IN BAMBOO WOOD.

CODE BG06 WG **LIST** \$205.00

A cake-stand with understated lines that includes great care to the functional aspects. Dedicated to baking enthusiasts who not only love to make things but also to present their creations as best as possible. A special item to offer cakes, sweets, biscuits, but also fruit or cheese.

- Quick ship USA



DIMENSIONS

PRODUCT

H: 8.47"

D: 12.45"

DESIGNER



BIG-GAME

BIG-GAME is a product and interior design studio created in 2004 by Augustin Scott de Martinville (French), Elric Petit (Belgian) and Grégoire Jeanmonod (Swiss). It is based in Lausanne, Switzerland.

📍 **ALESSI USA**, 41 Madison Avenue, 6th Floor, New York, NY 10010

☎ **+1 (718) 213-5304**

🌐 **www.alessi.com**

✉ **david.dimeco@alessi.com**



Bark Collection Centerpiece

CENTREPIECE IN 18/10 STAINLESS STEEL.

CODE BM01 **LIST** \$210.00

The Bark centerpiece was designed by Michel Boucquillon and Donia Maaoui. Both of Belgian origin, the designers have been inspired by the place where they live: Casa Boucquillon in Tuscany, a place of experimentation, meditation and work where they live at one with nature. As suggested by its name, the item brings to mind tree bark. The fretwork recalls knots in wood, the concave and elongated shape is reminiscent of the structure of a trunk. The result is a highly poetic yet functional object: the perforated part makes it suitable to keep fruit fresh, as if the fruit was in the baskets made of woven branches or bark, used in the country for the harvest. Its modelled design and large dimensions make it suitable for use as both a container and a centerpiece.

- Quick ship USA



DIMENSIONS

PRODUCT

H: 1.97"

L: 20.28"

W: 7.68"

DESIGNER



BOUCQUILLON & MAAOUI

Born in Belgium in 1962. In '2000, he opened a new workshop dedicated to Industrial Design and experimental Architecture in Lucca - Tuscany in his "CASA BOUCQUILLON", extremely experimental place of exploration, meditation, live and work. Michel actually works for the world most famous International Design companies. His work is present in several Museums and got many of the main international Awards. Donia Maaoui, Michel's wife and an architect herself, works alongside her husband on some of the Alessi and MartinelliLuce projects, although her principal occupation is cast bronze sculpture and painting.

📍 **ALESSI USA**, 41 Madison Avenue, 6th Floor, New York, NY 10010

☎ **+1 (718) 213-5304**

🌐 **www.alessi.com**

✉ **david.dimeco@alessi.com**



Bark Collection Centerpiece, Black

CENTREPIECE IN STEEL COLOURED WITH EPOXY RESIN, BLACK.

CODE BM01 B **LIST** \$140.00

The Bark centerpiece was designed by Michel Boucquillon and Donia Maaoui. Both of Belgian origin, the designers have been inspired by the place where they live: Casa Boucquillon in Tuscany, a place of experimentation, meditation and work where they live at one with nature. As suggested by its name, the item brings to mind tree bark. The fretwork recalls knots in wood, the concave and elongated shape is reminiscent of the structure of a trunk. The result is a highly poetic yet functional object: the perforated part makes it suitable to keep fruit fresh, as if the fruit was in the baskets made of woven branches or bark, used in the country for the harvest. Its modelled design and large dimensions make it suitable for use as both a container and a centerpiece.

- Quick ship USA



DIMENSIONS

PRODUCT

H: 1.97"

L: 20.28"

W: 7.68"

DESIGNER



BOUCQUILLON & MAAOUI

Born in Belgium in 1962. In 2000, he opened a new workshop dedicated to Industrial Design and experimental Architecture in Lucca - Tuscany in his "CASA BOUCQUILLON", extremely experimental place of exploration, meditation, live and work. Michel actually works for the world most famous International Design companies. His work is present in several Museums and got many of the main international Awards. Donia Maaoui, Michel's wife and an architect herself, works alongside her husband on some of the Alessi and MartinelliLuce projects, although her principal occupation is cast bronze sculpture and painting.

ALESSI USA, 41 Madison Avenue, 6th Floor, New York, NY 10010

+1 (718) 213-5304

www.alessi.com

david.dimeco@alessi.com



Bark Collection Barknest Basket

ROUND BASKET IN 18/10 STAINLESS STEEL.

CODE BM02 **LIST** \$165.00

The Bark centrepiece was designed by Michel Boucquillon and Donia Maaoui. Both of Belgian origin, the designers have been inspired by the place where they live: Casa Boucquillon in Tuscany, a place of experimentation, meditation and work where they live at one with nature. As suggested by its name, the item brings to mind tree bark. The fretwork recalls knots in wood, the concave and elongated shape is reminiscent of the structure of a trunk. The result is a highly poetic yet functional object: the perforated part makes it suitable to keep fruit fresh, as if the fruit was in the baskets made of woven branches or bark, used in the country for the harvest. Its modelled design and large dimensions make it suitable for use as both a container and a centrepiece.

- Quick ship USA



DIMENSIONS

PRODUCT

H: 2.76"

D: 8.27"

DESIGNER



BOUCQUILLON & MAAOUI

Born in Belgium in 1962. In '2000, he opened a new workshop dedicated to Industrial Design and experimental Architecture in Lucca - Tuscany in his "CASA BOUCQUILLON", extremely experimental place of exploration, meditation, live and work. Michel actually works for the world most famous International Design companies. His work is present in several Museums and got many of the main international Awards. Donia Maaoui, Michel's wife and an architect herself, works alongside her husband on some of the Alessi and MartinelliLuce projects, although her principal occupation is cast bronze sculpture and painting.

📍 **ALESSI USA**, 41 Madison Avenue, 6th Floor, New York, NY 10010

☎ **+1 (718) 213-5304**

🌐 **www.alessi.com**

✉ **david.dimeco@alessi.com**



Bark Collection Barknest Basket, Black

ROUND BASKET IN STEEL COLOURED WITH EPOXY RESIN, BLACK.

CODE BM02 B **LIST** \$120.00

"Barknest" basket is an object that, in name and form, recalls a cosy nest with rounded walls for holding and safeguarding precious contents. The highly expressive design of this object enhances any room where it is displayed.

- Quick ship USA



DIMENSIONS

PRODUCT

H: 2.76"

D: 8.27"

DESIGNER



BOUCQUILLON & MAAOUI

Born in Belgium in 1962. In '2000, he opened a new workshop dedicated to Industrial Design and experimental Architecture in Lucca - Tuscany in his "CASA BOUCQUILLON", extremely experimental place of exploration, meditation, live and work. Michel actually works for the world most famous International Design companies. His work is present in several Museums and got many of the main international Awards. Donia Maaoui, Michel's wife and an architect herself, works alongside her husband on some of the Alessi and MartinelliLuce projects, although her principal occupation is cast bronze sculpture and painting.

📍 **ALESSI USA**, 41 Madison Avenue, 6th Floor, New York, NY 10010

☎ **+1 (718) 213-5304**

🌐 **www.alessi.com**

✉ **david.dimeco@alessi.com**



Bark Collection Basket Basket, Small

ROUND BASKET IN 18/10 STAINLESS STEEL.

CODE BM10/18 **LIST** \$105.00

Basket is a perforated basket, designed to bring to the table the scents and colours of everyday foods, adding a touch of elegance to any table setting.

- Quick ship USA



DIMENSIONS

PRODUCT

H: 2.56"

D: 7.09"

DESIGNER



BOUCQUILLON & MAAOUI

Born in Belgium in 1962. In '2000, he opened a new workshop dedicated to Industrial Design and experimental Architecture in Lucca - Tuscany in his "CASA BOUCQUILLON", extremely experimental place of exploration, meditation, live and work. Michel actually works for the world most famous International Design companies. His work is present in several Museums and got many of the main international Awards. Donia Maaoui, Michel's wife and an architect herself, works alongside her husband on some of the Alessi and MartinelliLuce projects, although her principal occupation is cast bronze sculpture and painting.

📍 **ALESSI USA**, 41 Madison Avenue, 6th Floor, New York, NY 10010

☎ **+1 (718) 213-5304**

🌐 **www.alessi.com**

✉ **david.dimeco@alessi.com**

ALESSI



Bark Collection Basket Basket, Small, Black

ROUND BASKET IN COLOURED STEEL, BLACK.

CODE BM10/18 B **LIST** \$65.00

Basket is a perforated basket, designed to bring to the table the scents and colours of everyday foods, adding a touch of elegance to any table setting.

- Quick ship USA



DIMENSIONS

PRODUCT

H: 2.56"

D: 7.09"

DESIGNER



BOUCQUILLON & MAAOUI

Born in Belgium in 1962. In '2000, he opened a new workshop dedicated to Industrial Design and experimental Architecture in Lucca - Tuscany in his "CASA BOUCQUILLON", extremely experimental place of exploration, meditation, live and work. Michel actually works for the world most famous International Design companies. His work is present in several Museums and got many of the main international Awards. Donia Maaoui, Michel's wife and an architect herself, works alongside her husband on some of the Alessi and MartinelliLuce projects, although her principal occupation is cast bronze sculpture and painting.

📍 **ALESSI USA**, 41 Madison Avenue, 6th Floor, New York, NY 10010

☎ **+1 (718) 213-5304**

🌐 **www.alessi.com**

✉ **david.dimeco@alessi.com**



Bark Collection Basket Basket, Large

ROUND BASKET IN 18/10 STAINLESS STEEL.

CODE BM10/21 **LIST** \$130.00

Basket is a perforated basket, designed to bring to the table the scents and colours of everyday foods, adding a touch of elegance to any table setting.

- Quick ship USA



DIMENSIONS

PRODUCT

H: 3.94"

D: 8.27"

DESIGNER



BOUCQUILLON & MAAOUI

Born in Belgium in 1962. In '2000, he opened a new workshop dedicated to Industrial Design and experimental Architecture in Lucca - Tuscany in his "CASA BOUCQUILLON", extremely experimental place of exploration, meditation, live and work. Michel actually works for the world most famous International Design companies. His work is present in several Museums and got many of the main international Awards. Donia Maaoui, Michel's wife and an architect herself, works alongside her husband on some of the Alessi and MartinelliLuce projects, although her principal occupation is cast bronze sculpture and painting.

📍 **ALESSI USA**, 41 Madison Avenue, 6th Floor, New York, NY 10010

☎ **+1 (718) 213-5304**

🌐 **www.alessi.com**

✉ **david.dimeco@alessi.com**



Bark Collection Basket Basket, Large, White

ROUND BASKET IN COLOURED STEEL, WHITE.

CODE BM10/21 W **LIST** \$80.00

Basket is a perforated basket, designed to bring to the table the scents and colours of everyday foods, adding a touch of elegance to any table setting.

- Quick ship USA



DIMENSIONS

PRODUCT

H: 3.94"

D: 8.27"

DESIGNER



BOUCQUILLON & MAAOUI

Born in Belgium in 1962. In '2000, he opened a new workshop dedicated to Industrial Design and experimental Architecture in Lucca - Tuscany in his "CASA BOUCQUILLON", extremely experimental place of exploration, meditation, live and work. Michel actually works for the world most famous International Design companies. His work is present in several Museums and got many of the main international Awards. Donia Maaoui, Michel's wife and an architect herself, works alongside her husband on some of the Alessi and MartinelliLuce projects, although her principal occupation is cast bronze sculpture and painting.

📍 **ALESSI USA**, 41 Madison Avenue, 6th Floor, New York, NY 10010

☎ **+1 (718) 213-5304**

🌐 **www.alessi.com**

✉ **david.dimeco@alessi.com**

ALESSI



Double Wall Bowl, Large, Black

DOUBLE WALL BOWL IN STEEL COLOURED WITH EPOXY RESIN, BLACK WITH RELIEF DECORATION.

CODE DUL02/32BT LIST \$ 155

Double the light and elegant double-walled bowl. The granulation-enhanced surface of the bowl is further enhanced by the colour that creates a unique plastic effect.

- Quick ship USA



DIMENSIONS

PRODUCT

H: 3.74"

D: 12.60"

DESIGNER



CLAUDIA RAIMONDO

Architect, PhD in industrial design, she lives and works in Milan. Her professional interests are highly specific, marked by original features of research and innovation in the CMF sphere (colour, materials and finishes). Her CMF projects are based on products - like for the collaboration with Alessi - and context, especially via the development of meta-projects linked to brand identity, company image, and the retail outlets of famous names like Rolex and Tudor.

📍 **ALESSI USA**, 41 Madison Avenue, 6th Floor, New York, NY 10010

☎ **+1 (718) 213-5304**

🌐 **www.alessi.com**

✉ **david.dimeco@alessi.com**



Twergi Collection Ettore Sottsass Centerpiece Bowl, Yellow

CENTREPIECE IN LIMWOOD. COLOURED FOOT, YELLOW. ALESSI 100 VALUES COLLECTION.

CODE ES15 **LIST** \$330.00

With its incisive and powerful design, this centerpiece produced in lime wood is one of the most significant pieces created by Ettore Sottsass for Alessi. The large bowl can hold fruit, chocolates and sweets, dried flowers and other decorative items, according to personal taste needs. It is a small work of art capable of standing out in any domestic space.

- Quick ship USA



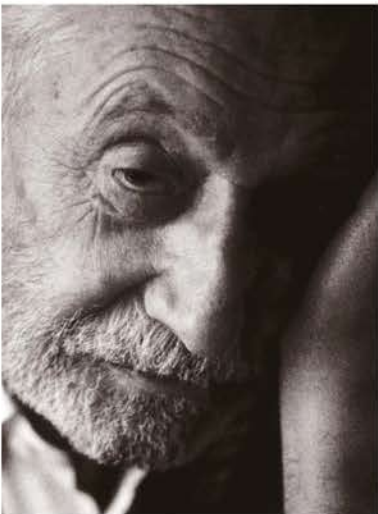
DIMENSIONS

PRODUCT

H: 5.51"

D: 11.82"

DESIGNERS



ETTORE SOTTASS

Ettore Sottsass (1917-2007) was an Italian architect and designer, also noted for founding The Memphis Group, a postmodern collaborative focused heavily on furniture design. With an emphasis on the unconventional and inspired by Art Deco, Pop Art and 1950's Kitsch, the designers became known for their bright and bold pieces with clashing colors and their work continues to be influential throughout the world.

COLORS

ES15
Yellow

ES15 1
Orange



ALESSI



Mediterraneo Collection Fruit Holder, Small

FRUIT BOWL IN 18/10 STAINLESS STEEL.

CODE ESI01/21 **LIST** \$165.00

The "Mediterraneo" decoration by LPWK – Emma Silvestris is the most recent example of a decoration that has been so successful that it has led to the creation of a family.

- Quick ship USA



DIMENSIONS

PRODUCT

H: 3.74"

D: 8.27"

DESIGNERS



LPWK

Metaproject designer, Laura Polinoro graduated from DAMS in Bologna. In 1989 she wrote "L'officina Alessi. Alberto Alessi and Alessandro Mendini: ten years of projects, 1980-1990". In 1990, with Alberto Alessi and Alessandro Mendini, she founded the Alessi Study Center (CSA), a place of experimentation that involves professionals and young creatives from various disciplines. There, she conducted workshops and created innovative collections proposing the concept of metaproject.



EMMA SILVESTRIS

Emma Silvestris is an Italian designer. Originally specializing in foreign literature and history of art, she worked as a teacher and researcher before entering the world of design. An eclectic and versatile designer, her designs combine soft, feminine lines, the precision and elegance of geometry and the use of ancient symbols.

📍 **ALESSI USA**, 41 Madison Avenue, 6th Floor, New York, NY 10010

☎ **+1 (718) 213-5304**

🌐 **www.alessi.com**

✉ **david.dimeco@alessi.com**



Mediterraneo Collection Fruit Holder, Small, Red

FRUIT BOWL IN STEEL COLOURED WITH EPOXY RESIN, RED.

CODE ESI01/21 **R LIST** \$105.00

The "Mediterraneo" decoration by LPWK – Emma Silvestris is the most recent example of a decoration that has been so successful that it has led to the creation of a family.

- Quick ship USA



DIMENSIONS

PRODUCT

H: 3.74"

D: 8.27"

DESIGNERS



LPWK

Metaproject designer, Laura Polinoro graduated from DAMS in Bologna. In 1989 she wrote "L'officina Alessi. Alberto Alessi and Alessandro Mendini: ten years of projects, 1980-1990". In 1990, with Alberto Alessi and Alessandro Mendini, she founded the Alessi Study Center (CSA), a place of experimentation that involves professionals and young creatives from various disciplines. There, she conducted workshops and created innovative collections proposing the concept of metaproject.



EMMA SILVESTRIS

Emma Silvestris is an Italian designer. Originally specializing in foreign literature and history of art, she worked as a teacher and researcher before entering the world of design. An eclectic and versatile designer, her designs combine soft, feminine lines, the precision and elegance of geometry and the use of ancient symbols.

📍 **ALESSI USA**, 41 Madison Avenue, 6th Floor, New York, NY 10010

☎ **+1 (718) 213-5304**

🌐 **www.alessi.com**

✉ **david.dimeco@alessi.com**

ALESSI



Mediterraneo Collection Fruit Holder, Medium

FRUIT BOWL IN 18/10 STAINLESS STEEL.

CODE ESI01/25 **LIST** \$190.00

The "Mediterraneo" decoration by LPWK – Emma Silvestris is the most recent example of a decoration that has been so successful that it has led to the creation of a family.

- Quick ship USA



DIMENSIONS

PRODUCT

H: 3.74"

D: 8.27"

DESIGNERS



LPWK

Metaproject designer, Laura Polinoro graduated from DAMS in Bologna. In 1989 she wrote "L'officina Alessi. Alberto Alessi and Alessandro Mendini: ten years of projects, 1980-1990". In 1990, with Alberto Alessi and Alessandro Mendini, she founded the Alessi Study Center (CSA), a place of experimentation that involves professionals and young creatives from various disciplines. There, she conducted workshops and created innovative collections proposing the concept of metaproject.



EMMA SILVESTRIS

Emma Silvestris is an Italian designer. Originally specializing in foreign literature and history of art, she worked as a teacher and researcher before entering the world of design. An eclectic and versatile designer, her designs combine soft, feminine lines, the precision and elegance of geometry and the use of ancient symbols.

📍 **ALESSI USA**, 41 Madison Avenue, 6th Floor, New York, NY 10010

☎ **+1 (718) 213-5304**

🌐 **www.alessi.com**

✉ **david.dimeco@alessi.com**

ALESSI



Mediterraneo Collection Fruit Holder, Large

FRUIT BOWL IN 18/10 STAINLESS STEEL.

CODE ESI01/29 **LIST** \$210.00

The "Mediterraneo" decoration by LPWK – Emma Silvestris is the most recent example of a decoration that has been so successful that it has led to the creation of a family.

- Quick ship USA



DIMENSIONS

PRODUCT

H: 4.25"

D: 11.42"

DESIGNERS



LPWK

Metaproject designer, Laura Polinoro graduated from DAMS in Bologna. In 1989 she wrote "L'officina Alessi. Alberto Alessi and Alessandro Mendini: ten years of projects, 1980-1990". In 1990, with Alberto Alessi and Alessandro Mendini, she founded the Alessi Study Center (CSA), a place of experimentation that involves professionals and young creatives from various disciplines. There, she conducted workshops and created innovative collections proposing the concept of metaproject.



EMMA SILVESTRIS

Emma Silvestris is an Italian designer. Originally specializing in foreign literature and history of art, she worked as a teacher and researcher before entering the world of design. An eclectic and versatile designer, her designs combine soft, feminine lines, the precision and elegance of geometry and the use of ancient symbols.

📍 **ALESSI USA**, 41 Madison Avenue, 6th Floor, New York, NY 10010

☎ **+1 (718) 213-5304**

🌐 **www.alessi.com**

✉ **david.dimeco@alessi.com**



Mediterraneo Collection Fruit Holder, Large, Red

FRUIT BOWL IN STEEL COLOURED WITH EPOXY RESIN, RED.

CODE ESI01/29 R **LIST** \$130.00

The "Mediterraneo" decoration by LPWK – Emma Silvestris is the most recent example of a decoration that has been so successful that it has led to the creation of a family.

- Quick ship USA



DIMENSIONS

PRODUCT

H: 4.25"

D: 11.42"

DESIGNERS



LPWK

Metaproject designer, Laura Polinoro graduated from DAMS in Bologna. In 1989 she wrote "L'officina Alessi. Alberto Alessi and Alessandro Mendini: ten years of projects, 1980-1990". In 1990, with Alberto Alessi and Alessandro Mendini, she founded the Alessi Study Center (CSA), a place of experimentation that involves professionals and young creatives from various disciplines. There, she conducted workshops and created innovative collections proposing the concept of metaproject.



EMMA SILVESTRIS

Emma Silvestris is an Italian designer. Originally specializing in foreign literature and history of art, she worked as a teacher and researcher before entering the world of design. An eclectic and versatile designer, her designs combine soft, feminine lines, the precision and elegance of geometry and the use of ancient symbols.

📍 **ALESSI USA**, 41 Madison Avenue, 6th Floor, New York, NY 10010

☎ **+1 (718) 213-5304**

🌐 **www.alessi.com**

✉ **david.dimeco@alessi.com**

ALESSI



Mediterraneo Collection Fruit Holder Insert, Large

BOWL IN THERMOPLASTIC RESIN.

CODE ESI01BOWL LIST \$60.00

- Quick ship USA



DIMENSIONS

PRODUCT

C: 148.8 fl oz

H: 3.94"

D: 11.42"

DESIGNERS



LPWK

Metaproject designer, Laura Polinoro graduated from DAMS in Bologna. In 1989 she wrote "L'officina Alessi. Alberto Alessi and Alessandro Mendini: ten years of projects, 1980-1990". In 1990, with Alberto Alessi and Alessandro Mendini, she founded the Alessi Study Center (CSA), a place of experimentation that involves professionals and young creatives from various disciplines. There, she conducted workshops and created innovative collections proposing the concept of metaproject.



EMMA SILVESTRIS

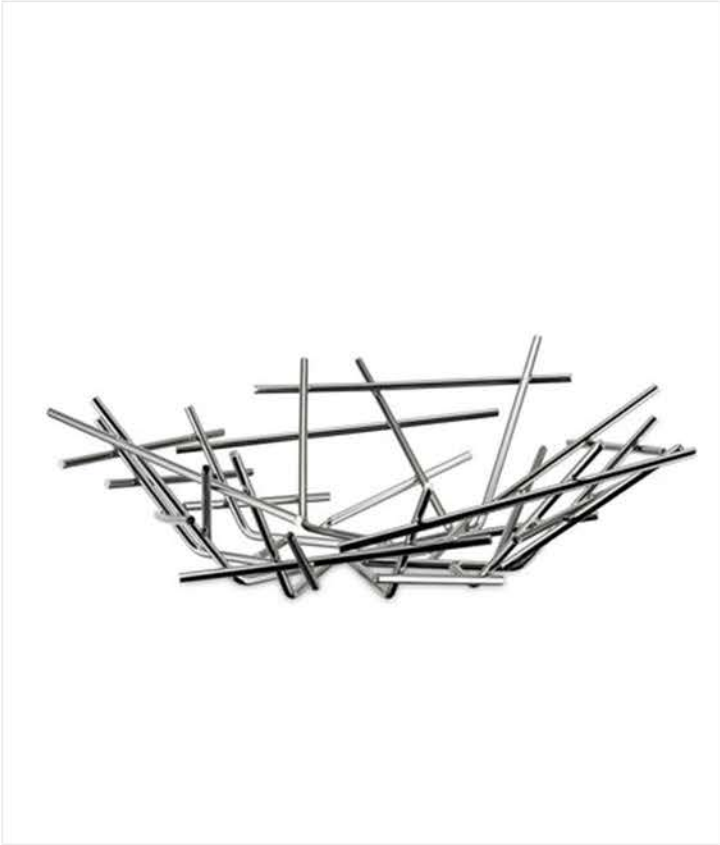
Emma Silvestris is an Italian designer. Originally specializing in foreign literature and history of art, she worked as a teacher and researcher before entering the world of design. An eclectic and versatile designer, her designs combine soft, feminine lines, the precision and elegance of geometry and the use of ancient symbols.

📍 **ALESSI USA**, 41 Madison Avenue, 6th Floor, New York, NY 10010

☎ **+1 (718) 213-5304**

🌐 **www.alessi.com**

✉ **david.dimeco@alessi.com**



Blow Up Collection Basket

BASKET IN 18/10 STAINLESS STEEL.

CODE FC02 **LIST** \$140.00

Newness, freshness and poetry dominate the aesthetic/constructive approach developed by the Campana brothers, Fernando and Humberto, for their "Blow Up" series, in which the form of the objects is created by the play of shapes and spaces generated by the steel rods put together almost at random. The theme is as recognisable here as it is in many of the designs by the talented Brazilian pair.

- Quick ship USA



DIMENSIONS

PRODUCT

H: 4.14"

L: 13.00"

W: 12.60"

DESIGNERS

FRATELLI CAMPANA

Humberto Campana, lawyer and Fernando Campana, architect, have been working together in San Paolo since 1983 in the field of artistic design. Their radical point of view is strengthened by the use of poor materials and industrial rubbish. Hand-made products represent the possibility of social redemption in a poor country. Their intention is to find a way for Brazilian design. In Italy, in 1997, they designed lights for O Luce. Some of their pieces appear in the International Design Year Book of 1997, edited by Philippe Starck. In 1998 the Moma in New York dedicated the "Progetto 66" exhibition to them, coupled with Ingo Maurer.



📍 **ALESSI USA**, 41 Madison Avenue, 6th Floor, New York, NY 10010

☎ **+1 (718) 213-5304**

🌐 **www.alessi.com**

✉ **david.dimeco@alessi.com**



Blow Up Collection Citrus Basket

CITRUS BASKET IN 18/10 STAINLESS STEEL.

CODE FC03 **LIST** \$240.00

Newness, freshness and poetry dominate the aesthetic/constructive approach developed by the Campana brothers, Fernando and Humberto, for their "Blow Up" series, in which the form of the objects is created by the play of shapes and spaces generated by the steel rods put together almost at random. The theme is as recognisable here as it is in many of the designs by the talented Brazilian pair.

- Quick ship USA



DIMENSIONS

PRODUCT

H: 12.41"

L: 14.18"

W: 13.78"

DESIGNERS

FRATELLI CAMPANA

Humberto Campana, lawyer and Fernando Campana, architect, have been working together in San Paolo since 1983 in the field of artistic design. Their radical point of view is strengthened by the use of poor materials and industrial rubbish. Hand-made products represent the possibility of social redemption in a poor country. Their intention is to find a way for Brazilian design. In Italy, in 1997, they designed lights for O Luce. Some of their pieces appear in the International Design Year Book of 1997, edited by Philippe Starck. In 1998 the Moma in New York dedicated the "Progetto 66" exhibition to them, coupled with Ingo Maurer.



📍 **ALESSI USA**, 41 Madison Avenue, 6th Floor, New York, NY 10010

☎ **+1 (718) 213-5304**

🌐 **www.alessi.com**

✉ **david.dimeco@alessi.com**

ALESSI



Vassily Tray With Handles

RECTANGULAR TRAY IN 18/10 STAINLESS STEEL
WITH HANDLES IN THERMOPLASTIC RESIN, BLACK.

CODE GIA01/45 **LIST** \$230.00

- Quick ship USA



DIMENSIONS

PRODUCT

H: 2.44"

L: 17.72"

W: 11.82"

DESIGNERS

GIULIO IACCHETTI

Giulio Iacchetti, industrial designer since 1992, designs for many brands including Alessi. The distinctive characteristics of his work is the research of new object typologies, like the Moscardino, the biodegradable spoon/fork designed with Matteo Ragni and for which, in 2001, he has been awarded with Compasso d'Oro. In 2009 he was awarded the prize for innovation – Premio dei Premi – by the President of the Italian Republic for the Coop Eureka project. In May 2009 the Triennale di Milano held a solo exhibition entitled Giulio Iacchetti. Disobedient objects. In 2014, he won his second Compasso d'Oro for the design of the manhole covers Sfera, designed with Matteo Ragni for Montini.



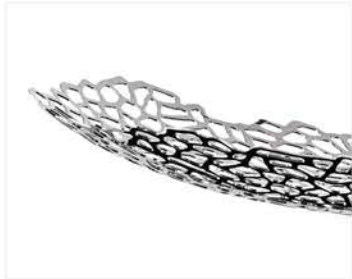
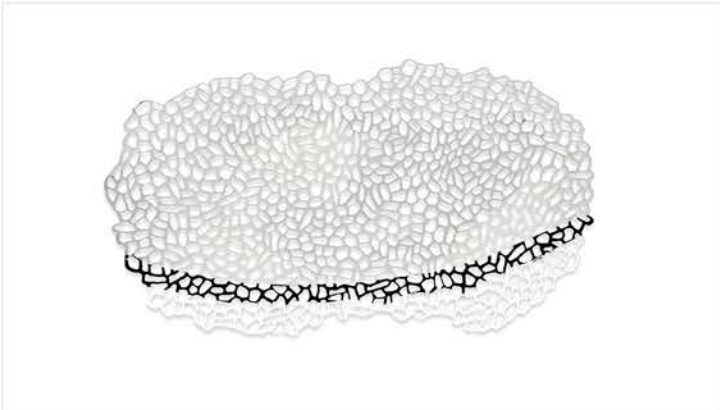
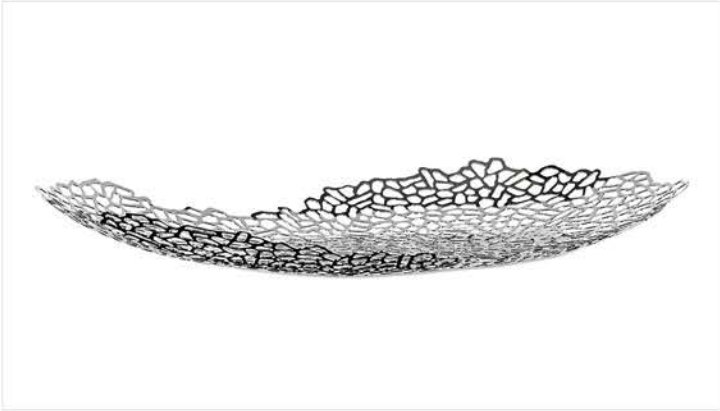
📍 **ALESSI USA**, 41 Madison Avenue, 6th Floor, New York, NY 10010

☎ **+1 (718) 213-5304**

🌐 **www.alessi.com**

✉ **david.dimeco@alessi.com**

ALESSI



Opus Centerpiece

CENTREPIECE IN 18/10 STAINLESS STEEL.

CODE GV32 **LIST** \$400.00

“Opus” is metal open-work, an elegant centerpiece reminiscent of fabric lace. It was precisely lace and tatting that inspired Guido Venturini in his design of this sophisticated article. “Opus” is a large centerpiece whose shape conveys lightness thanks to its unusual open-work pattern.

- Quick ship USA

DIMENSIONS

PRODUCT

H: 2.95”

L: 23.63”

W: 13.39”

DESIGNER



GUIDO VENTURINI

Born at Alfonsine in 1957. Architect, designer and explorer in the field of industrial design, interior design and architecture. In 1985 he and Stefano Giovannoni founded the Bolidist group and set up King-Kong Productions. He has taught at Domus Academy and at Florence Faculty of Architecture. Music is his greatest passion and source of inspiration.

📍 **ALESSI USA**, 41 Madison Avenue, 6th Floor, New York, NY 10010

☎ **+1 (718) 213-5304**

🌐 **www.alessi.com**

✉ **david.dimeco@alessi.com**



Round Tray Texture Black

ROUND TRAY IN STEEL COLOURED WITH EPOXY RESIN, BLACK WITH RELIEF DECORATION.

CODE JM14/35 **LIST** \$125.00

A tray with minimalist lines, designed by Jasper Morrison. Surface granulation and a rich black tone enhance this object's simple shapes, for a uniquely elegant table.

- Quick ship USA



DIMENSIONS

PRODUCT

H: 1.18"

D: 13.78"

DESIGNER



JASPER MORRISON

Jasper Morrison is an English product and furniture designer known for his refined and simplistic style, once quoted as saying "Objects should never shout". His work has been widely exhibited and is held in the permanent collections of many prominent institutions, including the Design Museum in London, the Vitra Design Museum in Germany, the Museum of Modern Art (MoMA) in New York, and several others. Morrison has designed for several global manufactures, including Alessi, Cappellini, Vitra, Magis, Flos and Sony, and has received many awards throughout his career, including the Compasso d'Oro and the Good Design Award.

📍 **ALESSI USA**, 41 Madison Avenue, 6th Floor, New York, NY 10010

☎ **+1 (718) 213-5304**

🌐 **www.alessi.com**

✉ **david.dimeco@alessi.com**

ALESSI



Round Basket Texture Black

ROUND BASKET IN STEEL COLOURED WITH EPOXY RESIN, BLACK WITH RELIEF DECORATION.

CODE JM17/21 **LIST** \$75.00

- Quick ship USA



DIMENSIONS

PRODUCT

H: 1.85"

D: 8.27"

DESIGNER



JASPER MORRISON

Jasper Morrison is an English product and furniture designer known for his refined and simplistic style, once quoted as saying "Objects should never shout". His work has been widely exhibited and is held in the permanent collections of many prominent institutions, including the Design Museum in London, the Vitra Design Museum in Germany, the Museum of Modern Art (MoMA) in New York, and several others. Morrison has designed for several global manufactures, including Alessi, Cappellini, Vitra, Magis, Flos and Sony, and has received many awards throughout his career, including the Compasso d'Oro and the Good Design Award.

📍 **ALESSI USA**, 41 Madison Avenue, 6th Floor, New York, NY 10010

☎ **+1 (718) 213-5304**

🌐 **www.alessi.com**

✉ **david.dimeco@alessi.com**



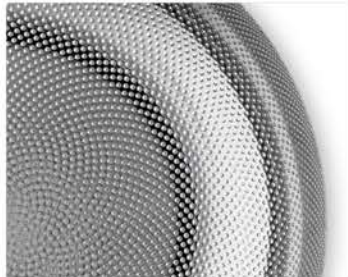
Round Basket Texture Black

ROUND BASKET IN STEEL COLOURED WITH EPOXY RESIN, BLACK WITH RELIEF DECORATION.

CODE JM17/24 **LIST** \$85.00

A basket with minimalist lines, designed by Jasper Morrison. Surface granulation and a rich black tone enhance this object's simple shapes, to add a touch of elegance to your home.

- Quick ship USA



DIMENSIONS

PRODUCT

H: 2.36"

D: 9.45"

DESIGNER



JASPER MORRISON

Jasper Morrison is an English product and furniture designer known for his refined and simplistic style, once quoted as saying "Objects should never shout". His work has been widely exhibited and is held in the permanent collections of many prominent institutions, including the Design Museum in London, the Vitra Design Museum in Germany, the Museum of Modern Art (MoMA) in New York, and several others. Morrison has designed for several global manufactures, including Alessi, Cappellini, Vitra, Magis, Flos and Sony, and has received many awards throughout his career, including the Compasso d'Oro and the Good Design Award.

📍 **ALESSI USA**, 41 Madison Avenue, 6th Floor, New York, NY 10010

☎ **+1 (718) 213-5304**

🌐 **www.alessi.com**

✉ **david.dimeco@alessi.com**



Round Basket Texture Black

ROUND BASKET IN STEEL COLOURED WITH EPOXY RESIN, BLACK WITH RELIEF DECORATION.

CODE JM17/29 **LIST** \$110.00

A basket with minimalist lines, designed by Jasper Morrison. Surface granulation and a rich black tone enhance this object's simple shapes, to add a touch of elegance to your home.

- Quick ship USA



DIMENSIONS

PRODUCT

H: 2.95"

D: 11.42"

DESIGNER



JASPER MORRISON

Jasper Morrison is an English product and furniture designer known for his refined and simplistic style, once quoted as saying "Objects should never shout". His work has been widely exhibited and is held in the permanent collections of many prominent institutions, including the Design Museum in London, the Vitra Design Museum in Germany, the Museum of Modern Art (MoMA) in New York, and several others. Morrison has designed for several global manufactures, including Alessi, Cappellini, Vitra, Magis, Flos and Sony, and has received many awards throughout his career, including the Compasso d'Oro and the Good Design Award.

📍 **ALESSI USA**, 41 Madison Avenue, 6th Floor, New York, NY 10010

☎ **+1 (718) 213-5304**

🌐 **www.alessi.com**

✉ **david.dimeco@alessi.com**

ALESSI



Michael Graves Large Oval Tray With Handles, Black

OVAL TRAY IN 18/10 STAINLESS STEEL MIRROR POLISHED WITH HANDLES IN PA, BLACK.

CODE MG09 **LIST** \$430.00

One of the Alessi's greatest trays, it echoes the decorative details of the family of kettles with whistling birds from 1985.

- Quick ship USA



DIMENSIONS

PRODUCT

H: 2.48"

L: 22.84"

W: 17.92"

DESIGNER



MICHAEL GRAVES

Michael Graves (1934-2015) was an internationally recognized American architect, designer, and educator. He was a member of The New York Five and The Memphis Group, and a professor of architecture at Princeton University for nearly forty years. . The New York Times described Graves as "one of the most prominent and prolific American architects of the latter 20th century, who designed more than 350 buildings around the world but was perhaps best known for [a] teakettle and pepper mill."

📍 **ALESSI USA**, 41 Madison Avenue, 6th Floor, New York, NY 10010

☎ **+1 (718) 213-5304**

🌐 **www.alessi.com**

✉ **david.dimeco@alessi.com**



Michael Graves Small Tray

TRAY IN 18/10 STAINLESS STEEL MIRROR POLISHED AND PA.

CODE MG34 **LIST** \$155.00

Designed to hold the 9097 sugar bowl and 9096 creamer, important members of the 9093 kettle with bird family, with the same cone-shaped body, dotted decoration on the base and and characteristic handles.

- Quick ship USA



DIMENSIONS

PRODUCT

H: 4.92"

L: 11.22"

W: 6.50"

DESIGNER



MICHAEL GRAVES

Michael Graves (1934-2015) was an internationally recognized American architect, designer, and educator. He was a member of The New York Five and The Memphis Group, and a professor of architecture at Princeton University for nearly forty years. . The New York Times described Graves as "one of the most prominent and prolific American architects of the latter 20th century, who designed more than 350 buildings around the world but was perhaps best known for [a] teakettle and pepper mill."

📍 **ALESSI USA**, 41 Madison Avenue, 6th Floor, New York, NY 10010

☎ **+1 (718) 213-5304**

🌐 **www.alessi.com**

✉ **david.dimeco@alessi.com**

ALESSI



Michael Graves Large Round Tray With Handles, Black

ROUND TRAY IN 18/10 STAINLESS STEEL MIRROR POLISHED WITH HANDLES IN PA, BLACK.

CODE MGVASS **LIST** \$320.00

Round tray in 18/10 stainless steel, mirror polished, with dotted decoration and handles in PA in black. The style reflects the decorative details of the family of the famous kettle with bird of 1985.

- Quick ship USA



DIMENSIONS

PRODUCT

H: 2.48"

D: 18.91"

DESIGNER



MICHAEL GRAVES

Michael Graves (1934-2015) was an internationally recognized American architect, designer, and educator. He was a member of The New York Five and The Memphis Group, and a professor of architecture at Princeton University for nearly forty years. . The New York Times described Graves as "one of the most prominent and prolific American architects of the latter 20th century, who designed more than 350 buildings around the world but was perhaps best known for [a] teakettle and pepper mill."

📍 **ALESSI USA**, 41 Madison Avenue, 6th Floor, New York, NY 10010

☎ **+1 (718) 213-5304**

🌐 **www.alessi.com**

✉ **david.dimeco@alessi.com**

ALESSI



Cactus! Fruit Bowl

OPEN-WORK FRUIT BOWL IN 18/10 STAINLESS STEEL.

CODE MSA04/21 LIST \$140.00

Round fruit basket in 18/10 stainless steel, mirror polished, with edge decorated by laser cutting. Mirror polished. The "CACTUS!" decoration has been available since 2000 in several different trays, baskets and objects for the kitchen.

- Quick ship USA



DIMENSIONS

PRODUCT

H: 3.74"

D: 8.27"

DESIGNERS



CSA

The Alessi Research Centre (CSA) was set up in 1990 for two purposes: to draw up theoretical papers on topics associated with objects (to be published as books), and to coordinate work with young designers. Up until that time Alessi had only worked with "major designers", and I felt a certain degree of responsibility towards young, upcoming designers. Alberto Alessi



MARTA SANSONI

Marta Sansoni is an architect and designer from Florence, Italy. Her work combines geometric abstraction, spatial play, attention to detail and monochromatism, creating a harmonious relationship between light, objects, and space. She has participated in several national and international design exhibitions and competitions, and has designed products for Alessi, Bitossi, Serralunga and others.

📍 **ALESSI USA**, 41 Madison Avenue, 6th Floor, New York, NY 10010

☎ **+1 (718) 213-5304**

🌐 **www.alessi.com**

✉ **david.dimeco@alessi.com**



Cactus! Fruit Bowl

OPEN-WORK FRUIT BOWL IN STEEL COLOURED WITH EPOXY RESIN, BLACK.

CODE MSA04/21 **B LIST** \$95.00

Fruit bowl in steel coloured with epoxy resin, black. The success of the "CACTUS!" range for the table, designed by Marta Sansoni and the Centro Studi Alessi, and in particular our mirror polished stainless steel fruit bowl of 2002, has led us to consider a third colour, conceived with the help of Claudia Raimondo: matte black. (Alberto Alessi)

- Quick ship USA



DIMENSIONS

PRODUCT

H: 3.74"

D: 8.27"

DESIGNERS

CSA

The Alessi Research Centre (CSA) was set up in 1990 for two purposes: to draw up theoretical papers on topics associated with objects (to be published as books), and to coordinate work with young designers. Up until that time Alessi had only worked with "major designers", and I felt a certain degree of responsibility towards young, upcoming designers. Alberto Alessi



**CENTRO STUDI
ALESSI**



MARTA SANSONI

Marta Sansoni is an architect and designer from Florence, Italy. Her work combines geometric abstraction, spatial play, attention to detail and monochromatism, creating a harmonious relationship between light, objects, and space. She has participated in several national and international design exhibitions and competitions, and has designed products for Alessi, Bitossi, Serralunga and others.

📍 **ALESSI USA**, 41 Madison Avenue, 6th Floor, New York, NY 10010

☎ **+1 (718) 213-5304**

🌐 **www.alessi.com**

✉ **david.dimeco@alessi.com**



Cactus! Fruit Bowl

OPEN-WORK FRUIT BOWL IN STEEL COLOURED WITH EPOXY RESIN, SUPER WHITE.

CODE MSA04/21 W **LIST** \$95.00

Fruit bowl in steel coloured with epoxy resin, black. The success of the "CACTUS!" range for the table, designed by Marta Sansoni and the Centro Studi Alessi, and in particular our mirror polished stainless steel fruit bowl of 2002, has led us to consider a third colour, conceived with the help of Claudia Raimondo: matte black. (Alberto Alessi)

- Quick ship USA



DIMENSIONS

PRODUCT

H: 3.74"

D: 8.27"

DESIGNERS

CSA

The Alessi Research Centre (CSA) was set up in 1990 for two purposes: to draw up theoretical papers on topics associated with objects (to be published as books), and to coordinate work with young designers. Up until that time Alessi had only worked with "major designers", and I felt a certain degree of responsibility towards young, upcoming designers. Alberto Alessi



MARTA SANSONI

Marta Sansoni is an architect and designer from Florence, Italy. Her work combines geometric abstraction, spatial play, attention to detail and monochromatism, creating a harmonious relationship between light, objects, and space. She has participated in several national and international design exhibitions and competitions, and has designed products for Alessi, Bitossi, Serralunga and others.



📍 **ALESSI USA**, 41 Madison Avenue, 6th Floor, New York, NY 10010

☎ **+1 (718) 213-5304**

🌐 **www.alessi.com**

✉ **david.dimeco@alessi.com**



Cactus! Fruit Bowl

OPEN-WORK FRUIT BOWL IN 18/10 STAINLESS STEEL.

CODE MSA04/29 **LIST** \$190.00

Round fruit basket in 18/10 stainless steel, mirror polished, with edge decorated by laser cutting. Mirror polished. The "CACTUS!" decoration has been available since 2000 in several different trays, baskets and objects for the kitchen. The success of the "Cactus!" range, and in particular our mirror polished stainless steel fruit bowl of 2002 (later available in the "Golden" and "Grey Metal" versions), has led us to consider a third colour, conceived with the help of Claudia Raimondo: matte black. (Alberto Alessi)

- Quick ship USA



DIMENSIONS

PRODUCT

H: 4.25"

D: 11.42"

DESIGNERS

CSA

The Alessi Research Centre (CSA) was set up in 1990 for two purposes: to draw up theoretical papers on topics associated with objects (to be published as books), and to coordinate work with young designers. Up until that time Alessi had only worked with "major designers", and I felt a certain degree of responsibility towards young, upcoming designers. Alberto Alessi



**CENTRO STUDI
ALESSI**

MARTA SANSONI

Marta Sansoni is an architect and designer from Florence, Italy. Her work combines geometric abstraction, spatial play, attention to detail and monochromatism, creating a harmonious relationship between light, objects, and space. She has participated in several national and international design exhibitions and competitions, and has designed products for Alessi, Bitossi, Serralunga and others.



📍 **ALESSI USA**, 41 Madison Avenue, 6th Floor, New York, NY 10010

☎ **+1 (718) 213-5304**

🌐 **www.alessi.com**

✉ **david.dimeco@alessi.com**



Cactus! Fruit Bowl

OPEN-WORK FRUIT BOWL IN STEEL COLOURED WITH EPOXY RESIN, BLACK.

CODE MSA04/29 B **LIST** \$130.00

Fruit bowl in steel coloured with epoxy resin, black. The success of the "CACTUS!" range for the table, designed by Marta Sansoni and the Centro Studi Alessi, and in particular our mirror polished stainless steel fruit bowl of 2002, has led us to consider a third colour, conceived with the help of Claudia Raimondo: matte black. (Alberto Alessi)

- Quick ship USA

DIMENSIONS

PRODUCT

H: 4.25"

D: 11.42"

COLORS

MSA04/29 B
Black

MSA04/29 W
White



DESIGNERS



CSA

The Alessi Research Centre (CSA) was set up in 1990 for two purposes: to draw up theoretical papers on topics associated with objects (to be published as books), and to coordinate work with young designers. Up until that time Alessi had only worked with "major designers", and I felt a certain degree of responsibility towards young, upcoming designers. Alberto Alessi



MARTA SANSONI

Marta Sansoni is an architect and designer from Florence, Italy. Her work combines geometric abstraction, spatial play, attention to detail and monochromatism, creating a harmonious relationship between light, objects, and space. She has participated in several national and international design exhibitions and competitions, and has designed products for Alessi, Bitossi, Serralunga and others.

📍 **ALESSI USA**, 41 Madison Avenue, 6th Floor, New York, NY 10010

☎ **+1 (718) 213-5304**

🌐 **www.alessi.com**

✉ **david.dimeco@alessi.com**



Stanza Dello Scirocco Basket

BASKET IN 18/10 STAINLESS STEEL.

CODE MT01 LIST \$135.00

This basket has been designed by Marco Trimarchi. "La Stanza dello Scirocco" is a range of items suitable for different rooms, such as the kitchen and the living room born out of the abstract and motionless atmosphere of a magic place: the room in large Sicilian country homes where one is forced to seek shelter from the sultriness while waiting for the scirocco to die down. It is a room without windows in which you can do nothing but ponder the wind that is undoing all subliminal things outside. The upshot is a collection of geometrically irregular items made up of small splinters of various sizes, interlaced in an unstable balance.

- Quick ship USA



DIMENSIONS

PRODUCT

H: 2.44"

L: 9.65"

W: 9.14"

DESIGNER



MARIO TRIMARCHI

Designer and architect, he believes in the project as a tool to spread poetry in the world of things. Director of the Domus Academy Master in Design from 1990 to 1993, he was part of the Olivetti Design Studio, designing cash dispenser and personal computers. In 1999 he founded FRAGILE, a corporate identity studio that he led together with Frida Doveil, designing brands and communication systems for Alessi, Banca Intesa, Cariparma, Coop Italia, Fiera Milano, Gebana, Olivetti, Poltrona Frau, Poste Italiane. In 2016 he won the Compasso d'Oro with the Ossidiana coffee maker for Alessi. Former Professor of Corporate Identity at the Faculty of Architecture in Genoa, he currently teaches Brand Design at Naba and Product Design at Abadir Academy. He draws day and night.

📍 **ALESSI USA**, 41 Madison Avenue, 6th Floor, New York, NY 10010

☎ **+1 (718) 213-5304**

🌐 **www.alessi.com**

✉ **david.dimeco@alessi.com**

Stanza Dello Scirocco Basket

BASKET IN 18/10 STAINLESS STEEL.

CODE MT01 LIST \$70.00

This basket has been designed by Marco Trimarchi. "La Stanza dello Scirocco" is a range of items suitable for different rooms, such as the kitchen and the living room born out of the abstract and motionless atmosphere of a magic place: the room in large Sicilian country homes where one is forced to seek shelter from the sultriness while waiting for the scirocco to die down. It is a room without windows in which you can do nothing but ponder the wind that is undoing all sublunary things outside. The upshot is a collection of geometrically irregular items made up of small splinters of various sizes, interlaced in an unstable balance.

- Quick ship USA



DIMENSIONS

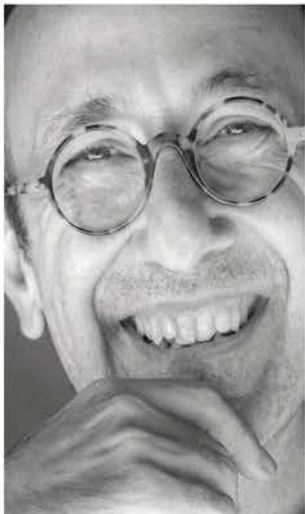
PRODUCT

H: 2.44"

L: 9.65"

W: 9.14"

DESIGNER



MARIO TRIMARCHI

Designer and architect, he believes in the project as a tool to spread poetry in the world of things. Director of the Domus Academy Master in Design from 1990 to 1993, he was part of the Olivetti Design Studio, designing cash dispenser and personal computers. In 1999 he founded FRAGILE, a corporate identity studio that he led together with Frida Doveil, designing brands and communication systems for Alessi, Banca Intesa, Cariparma, Coop Italia, Fiera Milano, Gebana, Olivetti, Poltrona Frau, Poste Italiane. In 2016 he won the Compasso d'Oro with the Ossidiana coffee maker for Alessi. Former Professor of Corporate Identity at the Faculty of Architecture in Genoa, he currently teaches Brand Design at Naba and Product Design at Abadir Academy. He draws day and night.

COLORS

MT01 B
Black

MT01 W
White



📍 **ALESSI USA**, 41 Madison Avenue, 6th Floor, New York, NY 10010

☎ +1 (718) 213-5304

🌐 www.alessi.com

✉ david.dimeco@alessi.com



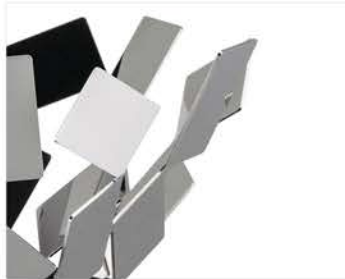
Stanza Dello Scirocco Fruit Holder

FRUIT HOLDER IN 18/10 STAINLESS STEEL.

CODE MT02 LIST \$ 195

This fruit holder has been designed by Marco Trimarchi. "La Stanza dello Scirocco" is a range of items suitable for different rooms, such as the kitchen and the living room born out of the abstract and motionless atmosphere of a magic place: the room in large Sicilian country homes where one is forced to seek shelter from the sultriness while waiting for the scirocco to die down. It is a room without windows in which you can do nothing but ponder the wind that is undoing all sublunary things outside. The upshot is a collection of geometrically irregular items made up of small splinters of various sizes, interlaced in an unstable balance.

- Quick ship USA



DIMENSIONS

PRODUCT

H: 5.12"

L: 10.75"

W: 10.75"

DESIGNER



MARIO TRIMARCHI

Designer and architect, he believes in the project as a tool to spread poetry in the world of things. Director of the Domus Academy Master in Design from 1990 to 1993, he was part of the Olivetti Design Studio, designing cash dispenser and personal computers. In 1999 he founded FRAGILE, a corporate identity studio that he led together with Frida Doveil, designing brands and communication systems for Alessi, Banca Intesa, Cariparma, Coop Italia, Fiera Milano, Gebana, Olivetti, Poltrona Frau, Poste Italiane. In 2016 he won the Compasso d'Oro with the Ossidiana coffee maker for Alessi. Former Professor of Corporate Identity at the Faculty of Architecture in Genoa, he currently teaches Brand Design at Naba and Product Design at Abadir Academy. He draws day and night.

COLORS

MT02 B
Black

MT02 W
White





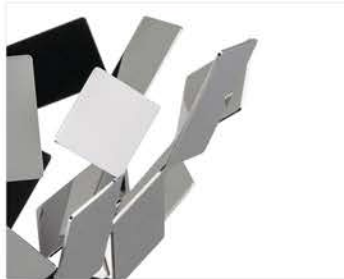
Stanza Dello Scirocco Fruit Holder

BASKET IN STEEL COLOURED WITH EPOXY RESIN, WHITE.

CODE MT03 LIST \$ 340

This fruit holder has been designed by Marco Trimarchi. "La Stanza dello Scirocco" is a range of items suitable for different rooms, such as the kitchen and the living room born out of the abstract and motionless atmosphere of a magic place: the room in large Sicilian country homes where one is forced to seek shelter from the sultriness while waiting for the scirocco to die down. It is a room without windows in which you can do nothing but ponder the wind that is undoing all sublunary things outside. The upshot is a collection of geometrically irregular items made up of small splinters of various sizes, interlaced in an unstable balance.

- Quick ship USA



DIMENSIONS

PRODUCT

H: 5.91"

L: 16.38"

W: 14.77"

DESIGNER



MARIO TRIMARCHI

Designer and architect, he believes in the project as a tool to spread poetry in the world of things. Director of the Domus Academy Master in Design from 1990 to 1993, he was part of the Olivetti Design Studio, designing cash dispenser and personal computers. In 1999 he founded FRAGILE, a corporate identity studio that he led together with Frida Doveil, designing brands and communication systems for Alessi, Banca Intesa, Cariparma, Coop Italia, Fiera Milano, Gebana, Olivetti, Poltrona Frau, Poste Italiane. In 2016 he won the Compasso d'Oro with the Ossidiana coffee maker for Alessi. Former Professor of Corporate Identity at the Faculty of Architecture in Genoa, he currently teaches Brand Design at Naba and Product Design at Abadir Academy. He draws day and night.

📍 **ALESSI USA**, 41 Madison Avenue, 6th Floor, New York, NY 10010

☎ **+1 (718) 213-5304**

🌐 **www.alessi.com**

✉ **david.dimeco@alessi.com**



Stanza Dello Scirocco Fruit Holder

FRUIT HOLDER IN 18/10 STAINLESS STEEL.

CODE MT03 LIST \$ 170

This fruit holder has been designed by Marco Trimarchi. "La Stanza dello Scirocco" is a range of items suitable for different rooms, such as the kitchen and the living room born out of the abstract and motionless atmosphere of a magic place: the room in large Sicilian country homes where one is forced to seek shelter from the sultriness while waiting for the scirocco to die down. It is a room without windows in which you can do nothing but ponder the wind that is undoing all sublunary things outside. The upshot is a collection of geometrically irregular items made up of small splinters of various sizes, interlaced in an unstable balance.

- Quick ship USA



DIMENSIONS

PRODUCT

H: 5.91"

L: 16.38"

W: 14.77"

DESIGNER



MARIO TRIMARCHI

Designer and architect, he believes in the project as a tool to spread poetry in the world of things. Director of the Domus Academy Master in Design from 1990 to 1993, he was part of the Olivetti Design Studio, designing cash dispenser and personal computers. In 1999 he founded FRAGILE, a corporate identity studio that he led together with Frida Doveil, designing brands and communication systems for Alessi, Banca Intesa, Cariparma, Coop Italia, Fiera Milano, Gebana, Olivetti, Poltrona Frau, Poste Italiane. In 2016 he won the Compasso d'Oro with the Ossidiana coffee maker for Alessi. Former Professor of Corporate Identity at the Faculty of Architecture in Genoa, he currently teaches Brand Design at Naba and Product Design at Abadir Academy. He draws day and night.

COLORS

MT03 B
Black

MT03 W
White





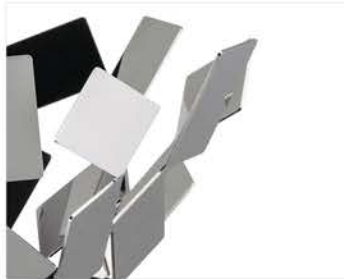
Dressed Round Tray

ROUND TRAY IN 18/10 STAINLESS STEEL MIRROR POLISHED WITH RELIEF DECORATION.

CODE MW07 LIST \$ 155

The table set Dressed was designed by Marcel Wanders. Traditionally, the rules would require that decoration be applied in the most important and most visible areas of the object. Wanders, on the other hand, applies it to secluded areas, a little out of sight, sometimes even in areas that aren't normally visible at all, so much so that we could call it a sort of introverted decoration. In this way, even though he uses a language of signs that is very rich and complex, a bit flowery, a little baroque, Wanders manages to maintain a certain level of overall elegance and lightness. The Dressed series is complete in every aspect of a typical place setting and is composed of Plates and Bowls, Cutlery, Glasses, Placemat, a Tray, and Glass and Bottle Coasters..

- Quick ship USA



DIMENSIONS

PRODUCT

D: 13.78"

DESIGNER



MARCEL WANDERS

Marcel Wanders grew up in Boxtel, the Netherlands, and graduated from the School of the Arts Arnhem in 1988. Marcel Wanders' fame started with his iconic Knotted Chair, which he produced for Droog Design in 1996. He is now designing for the biggest European design manufacturers like Droog Design and Moooi of which he is also art director and co-owner. Founded in 2000, Moooi has grown into an internationally renowned design label. Additionally, he works on architectural and interior design projects. Various designs of Marcel Wanders have been selected for the most important design exhibitions in the world. Coverage on Marcel has been published in all leading design magazines and newspapers.

📍 **ALESSI USA**, 41 Madison Avenue, 6th Floor, New York, NY 10010

☎ +1 (718) 213-5304

🌐 www.alessi.com

✉ david.dimeco@alessi.com



Moire'tray Black

RECTANGULAR TRAY IN STEEL COLOURED WITH EPOXY RESIN, BLACK WITH RELIEF DECORATION.

CODE MW70 BT LIST \$ 120

Just like the French fabric of the same name, the Moiré tray creates an iridescent effect with its embossed motif. The granulation-enhanced surface of the bowl is further enhanced by the colour..

- Quick ship USA



DIMENSIONS

PRODUCT

L: 17.72"

W: 13.39"

DESIGNER



MARCEL WANDERS

Marcel Wanders is a leading product and interior designer, art director, and founder of Moooi. Wanders' fame started with his iconic Knotted Chair, and he now designs for some of the biggest design manufacturers. His work continues to be covered in leading design publications and his designs have been selected for some of the most important design exhibitions in the world.

📍 **ALESSI USA**, 41 Madison Avenue, 6th Floor, New York, NY 10010

☎ **+1 (718) 213-5304**

🌐 **www.alessi.com**

✉ **david.dimeco@alessi.com**



Round Basket

BASKET IN 18/10 STAINLESS STEEL.

CODE PCH02/15 LIST \$ 75

The basket, designed by Pierre Charpin, on the other hand, whose use is so evident, is an essential part of our domestic landscape both in the kitchen and in the sitting room, a presence that reminds us of an ancient, pre-industrial past, bringing back the old "gallery trays" trays from the 18th and 19th century to mind.

- Quick ship USA



DIMENSIONS

PRODUCT

H: 1.97"

D: 5.91"

DESIGNER



PIERRE CHARPIN

Pierre Charpin was born in 1962 in Saint-Mandé (Paris). An artist by education, his devotion to the design of furniture and objects dates from the beginning of the 1990's. His work is recognized by various companies of international renown. His Tripla vase, produced by Venini, appears in the selection of the Compasso d' Oro 2005. The Paris Furniture Fair elects him creator of the year 2005. Several of his pieces are included in the collections of the FNAC (National Foundation for Contemporary Art) of the Georges Pompidou Center and of the Decorative Arts Museum of Paris.

📍 **ALESSI USA**, 41 Madison Avenue, 6th Floor, New York, NY 10010

☎ **+1 (718) 213-5304**

🌐 **www.alessi.com**

✉ **david.dimeco@alessi.com**



Round Basket

BASKET IN 18/10 STAINLESS STEEL.

CODE PCH02/20 LIST \$ 120

The basket, designed by Pierre Charpin, on the other hand, whose use is so evident, is an essential part of our domestic landscape both in the kitchen and in the sitting room, a presence that reminds us of an ancient, pre-industrial past, bringing back the old "gallery trays" trays from the 18th and 19th century to mind.

- Quick ship USA



DIMENSIONS

PRODUCT

H: 1.97"

D: 7.88"

DESIGNER



PIERRE CHARPIN

Pierre Charpin was born in 1962 in Saint-Mandé (Paris). An artist by education, his devotion to the design of furniture and objects dates from the beginning of the 1990's. His work is recognized by various companies of international renown. His Triplo vase, produced by Venini, appears in the selection of the Compasso d' Oro 2005. The Paris Furniture Fair elects him creator of the year 2005. Several of his pieces are included in the collections of the FNAC (National Foundation for Contemporary Art) of the Georges Pompidou Center and of the Decorative Arts Museum of Paris.

📍 **ALESSI USA**, 41 Madison Avenue, 6th Floor, New York, NY 10010

☎ **+1 (718) 213-5304**

🌐 **www.alessi.com**

✉ **david.dimeco@alessi.com**



Fruit Holder

FRUIT BOWL IN 18/10 STAINLESS STEEL.

CODE PCH05/24 LIST \$160.00

The fruit holder, designed by Pierre Charpin, on the other hand, whose use is so evident, is an essential part of our domestic landscape both in the kitchen and in the living room, a presence that reminds us of an ancient, pre-industrial past, bringing back the old gallery trays from the 18th and 19th century to mind.

- Quick ship USA



DIMENSIONS

PRODUCT

H: 4.33"

D: 9.45"

DESIGNER



PIERRE CHARPIN

Pierre Charpin was born in 1962 in Saint-Mandé (Paris). An artist by education, his devotion to the design of furniture and objects dates from the beginning of the 1990's. His work is recognized by various companies of international renown. His Tripla vase, produced by Venini, appears in the selection of the Compasso d' Oro 2005. The Paris Furniture Fair elects him creator of the year 2005. Several of his pieces are included in the collections of the FNAC (National Foundation for Contemporary Art) of the Georges Pompidou Center and of the Decorative Arts Museum of Paris.

📍 **ALESSI USA**, 41 Madison Avenue, 6th Floor, New York, NY 10010

☎ +1 (718) 213-5304

🌐 www.alessi.com

✉ david.dimeco@alessi.com



Round Basket

BASKET IN 18/10 STAINLESS STEEL.

CODE PCH02/23 LIST \$ 155

The basket, designed by Pierre Charpin, on the other hand, whose use is so evident, is an essential part of our domestic landscape both in the kitchen and in the sitting room, a presence that reminds us of an ancient, pre-industrial past, bringing back the old "gallery trays" trays from the 18th and 19th century to mind.

- Quick ship USA



DIMENSIONS

PRODUCT

H: 2.76"

D: 9.06"

DESIGNER



PIERRE CHARPIN

Pierre Charpin was born in 1962 in Saint-Mandé (Paris). An artist by education, his devotion to the design of furniture and objects dates from the beginning of the 1990's. His work is recognized by various companies of international renown. His Triplo vase, produced by Venini, appears in the selection of the Compasso d' Oro 2005. The Paris Furniture Fair elects him creator of the year 2005. Several of his pieces are included in the collections of the FNAC (National Foundation for Contemporary Art) of the Georges Pompidou Center and of the Decorative Arts Museum of Paris.



Round Basket

BASKET IN 18/10 STAINLESS STEEL.

CODE PCH02/23 LIST \$ 155

The basket, designed by Pierre Charpin, on the other hand, whose use is so evident, is an essential part of our domestic landscape both in the kitchen and in the sitting room, a presence that reminds us of an ancient, pre-industrial past, bringing back the old "gallery trays" trays from the 18th and 19th century to mind.

- Quick ship USA



DIMENSIONS

PRODUCT

D: 1.97"

H: 2.76"

DESIGNER



PIERRE CHARPIN

Pierre Charpin was born in 1962 in Saint-Mandé (Paris). An artist by education, his devotion to the design of furniture and objects dates from the beginning of the 1990's. His work is recognized by various companies of international renown. His Tripla vase, produced by Venini, appears in the selection of the Compasso d' Oro 2005. The Paris Furniture Fair elects him creator of the year 2005. Several of his pieces are included in the collections of the FNAC (National Foundation for Contemporary Art) of the Georges Pompidou Center and of the Decorative Arts Museum of Paris.



Fruit Bowl In Steel

FRUIT BOWL IN 18/10 STAINLESS STEEL.

CODE PCH05/30 LIST \$ 210

The fruit holder, designed by Pierre Charpin, on the other hand, whose use is so evident, is an essential part of our domestic landscape both in the kitchen and in the living room, a presence that reminds us of an ancient, pre-industrial past, bringing back the old gallery trays from the 18th and 19th century to mind.

- Quick ship USA



DIMENSIONS

PRODUCT

D: 11.82"

H: 4.73"

DESIGNER



PIERRE CHARPIN

Pierre Charpin was born in 1962 in Saint-Mandé (Paris). An artist by education, his devotion to the design of furniture and objects dates from the beginning of the 1990's. His work is recognized by various companies of international renown. His Tripla vase, produced by Venini, appears in the selection of the Compasso d' Oro 2005. The Paris Furniture Fair elects him creator of the year 2005. Several of his pieces are included in the collections of the FNAC (National Foundation for Contemporary Art) of the Georges Pompidou Center and of the Decorative Arts Museum of Paris.

📍 **ALESSI USA**, 41 Madison Avenue, 6th Floor, New York, NY 10010

☎ **+1 (718) 213-5304**

🌐 **www.alessi.com**

✉ **david.dimeco@alessi.com**

Oval Basket In Steel

OVAL BASKET IN 18/10 STAINLESS STEEL.

CODE PCH06/26 LIST \$ 160

The oval basket, designed by Pierre Charpin, on the other hand, whose use is so evident, is an essential part of our domestic landscape both in the kitchen and in the sitting room, a presence that reminds us of an ancient, pre-industrial past, bringing back the old "gallery trays" trays from the 18th and 19th century to mind.

- Quick ship USA



DIMENSIONS

PRODUCT

L: 10.24"

W: 7.88"

H: 2.36"

DESIGNER



PIERRE CHARPIN

Pierre Charpin was born in 1962 in Saint-Mandé (Paris). An artist by education, his devotion to the design of furniture and objects dates from the beginning of the 1990's. His work is recognized by various companies of international renown. His Triplo vase, produced by Venini, appears in the selection of the Compasso d' Oro 2005. The Paris Furniture Fair elects him creator of the year 2005. Several of his pieces are included in the collections of the FNAC (National Foundation for Contemporary Art) of the Georges Pompidou Center and of the Decorative Arts Museum of Paris.

📍 **ALESSI USA**, 41 Madison Avenue, 6th Floor, New York, NY 10010

☎ +1 (718) 213-5304

🌐 www.alessi.com

✉ david.dimeco@alessi.com



Veneer Bowl

BOWL IN 18/10 STAINLESS STEEL WITH RELIEF DECORATION.

CODE PU06/21 **LIST** \$ 125.00

Made of steel, the Veneer bowl is the perfect object to decorate your house. The item recalls the wood grain making the mise en place original and unique.

- Quick ship USA



DIMENSIONS

PRODUCT

D: 8.27"

H: 2.56"

DESIGNER



PATRICIA URQUIOLA

Patricia Urquiola was born in Oviedo (Spain) in 1961. She currently lives and works in Milan, Italy. She attended the University of Architecture at Madrid Polytechnic as well as Milan Polytechnic, where she graduated in 1989 with Achille Castiglioni. She has been an assistant lecturer to Achille Castiglioni, worked with Vico Magistretti, head of Lissoni Associati's design group. In 2001 she opened her own studio working on product design, architecture, and installations. She creates design products for the most important Italian and international companies. Some of her work is displayed in various museums and collections. She has won several international prizes and awards.

📍 **ALESSI USA**, 41 Madison Avenue, 6th Floor, New York, NY 10010

☎ **+1 (718) 213-5304**

🌐 **www.alessi.com**

✉ **david.dimeco@alessi.com**



Veneer Bowl

BOWL IN 18/10 STAINLESS STEEL WITH RELIEF DECORATION.

CODE PU06/29 **LIST** \$ 155.00

Made of steel, the Veneer bowl is the perfect object to decorate your house. The item recalls the wood grain making the mise en place original and unique

- Quick ship USA



DIMENSIONS

PRODUCT

D: 11.42"

H: 3.54"

DESIGNER



PATRICIA URQUIOLA

Patricia Urquiola was born in Oviedo (Spain) in 1961. She currently lives and works in Milan, Italy. She attended the University of Architecture at Madrid Polytechnic as well as Milan Polytechnic, where she graduated in 1989 with Achille Castiglioni. She has been an assistant lecturer to Achille Castiglioni, worked with Vico Magistretti, head of Lissoni Associati's design group. In 2001 she opened her own studio working on product design, architecture, and installations. She creates design products for the most important Italian and international companies. Some of her work is displayed in various museums and collections. She has won several international prizes and awards.

📍 **ALESSI USA**, 41 Madison Avenue, 6th Floor, New York, NY 10010

☎ **+1 (718) 213-5304**

🌐 **www.alessi.com**

✉ **david.dimeco@alessi.com**



Veneer Centerpiece

TRAY IN 18/10 STAINLESS STEEL WITH RELIEF DECORATION.

CODE PU07 LIST \$ 170.00

The Veneer tray is perfect to decorate the living spaces and serve delicious dishes. The mesmerizing softness of the decorative lines will carry you beyond everyday reality.

- Quick ship USA



DIMENSIONS

PRODUCT

D: 16.54"

DESIGNER



PATRICIA URQUIOLA

Patricia Urquiola was born in Oviedo (Spain) in 1961. She currently lives and works in Milan, Italy. She attended the University of Architecture at Madrid Polytechnic as well as Milan Polytechnic, where she graduated in 1989 with Achille Castiglioni. She has been an assistant lecturer to Achille Castiglioni, worked with Vico Magistretti, head of Lissoni Associati's design group. In 2001 she opened her own studio working on product design, architecture, and installations. She creates design products for the most important Italian and international companies. Some of her work is displayed in various museums and collections. She has won several international prizes and awards.



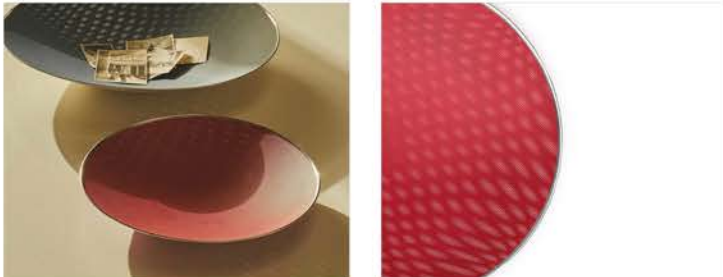
Cohncave Bowl

OPEN-WORK CENTREPIECE IN STEEL COLOURED WITH EPOXY RESIN, RED AND VIOLET. ALESSI 100 VALUES COLLECTION.

CODE SC01/33 **LIST** \$ 190.00

An object that straddles the line between art and design created by Susan Cohn: this apparently simple and minimal centrepiece conceals an extremely sophisticated design. The designer was inspired by the screened furniture in which food used to be stored, and developed an intelligent design process with a refined moiré effect created by the passage of light between two superimposed nets.

- Quick ship USA



DIMENSIONS

PRODUCT

D: 13.00"

H: 1.97"

DESIGNER



CSA, SUSAN COHN

Influential Australian silversmith, designer of small objects and jewels she directly produces in her small and yet efficient laboratory in Melbourne in small series, Susan Cohn (Sydney, 1952) is also an active lecturer in international design schools.

📍 **ALESSI USA**, 41 Madison Avenue, 6th Floor, New York, NY 10010

☎ **+1 (718) 213-5304**

🌐 **www.alessi.com**

✉ **david.dimeco@alessi.com**



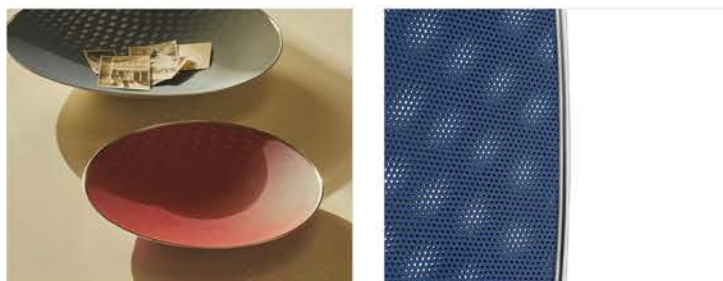
Cohncave Bowl

OPEN-WORK CENTREPIECE IN STEEL COLOURED WITH EPOXY RESIN, RED AND VIOLET. ALESSI 100 VALUES COLLECTION.

CODE SC01/49 LIST \$ 290.00

Part of the Memory Containers metaproject, coordinated by the CSA in the early 1990s and which involved 200 young designers (aged under 30) working in the area of archetypes for presenting and offering food.

- Quick ship USA



DIMENSIONS

PRODUCT

D: 19.30"

H: 2.56"

DESIGNER



CSA, SUSAN COHN

Influential Australian silversmith, designer of small objects and jewels she directly produces in her small and yet efficient laboratory in Melbourne in small series, Susan Cohn (Sydney, 1952) is also an active lecturer in international design schools.

📍 **ALESSI USA**, 41 Madison Avenue, 6th Floor, New York, NY 10010

☎ +1 (718) 213-5304

🌐 www.alessi.com

✉ david.dimeco@alessi.com



A Lotus Leaf Centerpiece

CENTREPIECE IN 18/10 STAINLESS STEEL.

CODE YHC01 LIST \$ 310.00

A "Lotus Leaf", designed by Chang Yung Ho (Atelier FCJZ) is part of the "(Un)Forbidden City". This centerpiece represents the will to take inspiration from the nature with very small design influence. This lotus leaf was picked from the lotus pond of The Old Summer Palace and was left six month to dry. The obtained form has been scanned with a tridimensional scanner and transformed in a mould to obtain the stainless steel copy that produces the tray. The mould can be used on both sides in order to obtain two different ways of containing or serving.

- Quick ship USA



DIMENSIONS

PRODUCT

L: 17.64"

W: 16.15"

H: 2.48"

DESIGNER



YUNG HO CHANG

Originally from Beijing and educated both in China and in the US, Chang received Master of Architecture degree from the University of California at Berkeley in 1984. He has been practicing in China since 1992 and established Atelier Feichang Jianzhu (FCJZ) in 1993. He has won a number of prizes. He has published eight books and monographs. He participated in many international exhibitions of art and architecture. He was a Professor and Founding Head of Graduate Center of Architecture at Peking University; he held the Kenzo Tange Chair at Harvard in 2002 and the Eiel Saareinen Chair at Michigan in 2004.



Niche Table-Center

CENTREPIECE WITH INTERPOSABLE ELEMENTS IN MELAMINE, BLACK.

CODE ZH02 **LIST** \$ 240.00

"Niche" can quite simply be considered a domestic sculpture. The composition of formally complex pieces results in a unique and sinuous dovetail effect. As soon as you see "Niche" you want to take a piece in your hands so you can feel what to the eye appears to be an attractive, sinuous and velvety object. It can be a centerpiece made up of 5 pieces, each of which can be used as an individual receptacle for sweets or chocolates, or it can be used on a desk to hold office stationery and pens. Niche" is produced from black melamine and has a smooth, matte finish that makes the pieces both pleasing to the touch and easy on the eye. An image of the composition, designed to act as a guide, is found underneath the base of the object together with the Officina Alessi logo and the name of the designer.

- Quick ship USA



DIMENSIONS

PRODUCT

L: 23.63"

W: 11.82"

H: 2.76"

DESIGNER



ZAHA HADID

Zaha Hadid (Bagdad 1950) studied at the Architectural Association in London, where she qualified in 1977. She was teacher at the University of Applied Arts in Vienna, and is Visiting Professor at Yale University. She began her professional career in 1979. Her major completed projects include the If one pavilion at Weil am Rhein; the Mind Zone at Millennium Dome in London; a tram station and car park in Strasbourg and a ski jump in Innsbruck. Zaha Hadid is also well known as a painter and designer: her work has been shown in various exhibitions in the United States, Japan, Britain and Germany. Zaha Hadid died in 2016.



Dressed Air Serving Plate, Light Gray

SERVING PLATE IN MELAMINE WITH RELIEF DECORATION, LIGHT GREY.

CODE MW72/22 LG LIST \$ 50.00

Marcel Wanders' talent for decoration led to the creation of "Dressed En Plein Air". A set for outdoor or informal lunches, consisting of plates, serving elements, glasses and cutlery. Made with durable materials, "Dressed en plein air" is a collection aimed at the outdoor world, which answers the need to eliminate disposable plastic.

- Quick ship USA



DIMENSIONS PRODUCT

L: 17.72"

W: 7.29"

DESIGNER



MARCEL WANDERS

Marcel Wanders is a leading product and interior designer, art director, and founder of Moooi. Wanders' fame started with his iconic Knotted Chair, and he now designs for some of the biggest design manufacturers. His work continues to be covered in leading design publications and his designs have been selected for some of the most important design exhibitions in the world.

📍 **ALESSI USA**, 41 Madison Avenue, 6th Floor, New York, NY 10010

☎ **+1 (718) 213-5304**

🌐 **www.alessi.com**

✉ **david.dimeco@alessi.com**



Dressed Air Salad Bowl Wg

SALAD BOWL IN MELAMINE WITH RELIEF DECORATION, WARM GREY.

CODE MW72/38 WG **LIST** \$ 60.00

Marcel Wanders' talent for decoration led to the creation of "Dressed En Plein Air". A set for outdoor or informal lunches, consisting of plates, serving elements, glasses and cutlery. Made with durable materials, "Dressed en plein air" is a collection aimed at the outdoor world, which answers the need to eliminate disposable plastic.

- Quick ship USA



DIMENSIONS

PRODUCT

H: 2.95"

C: 98.1 fl oz

D: 11.62"

DESIGNER



MARCEL WANDERS

Marcel Wanders is a leading product and interior designer, art director, and founder of Moooi. Wanders' fame started with his iconic Knotted Chair, and he now designs for some of the biggest design manufacturers. His work continues to be covered in leading design publications and his designs have been selected for some of the most important design exhibitions in the world.

📍 **ALESSI USA**, 41 Madison Avenue, 6th Floor, New York, NY 10010

☎ **+1 (718) 213-5304**

🌐 **www.alessi.com**

✉ **david.dimeco@alessi.com**



Dressed Air Small Bowl W

DESSERT BOWL IN MELAMINE WITH RELIEF DECORATION, WHITE.

CODE MW72/54 W LIST \$ 52.00

"Marcel Wanders' talent for decoration led to the creation of "Dressed En Plein Air". A set for outdoor or informal lunches, consisting of plates, serving elements, glasses and cutlery. Made with durable materials, ""Dressed en plein air"" is a collection aimed at the outdoor world, which answers the need to eliminate disposable plastic."

- Quick ship USA



DIMENSIONS

PRODUCT

H: 1.58"

C: 7.4 fl oz

D: 5.12"

DESIGNER



MARCEL WANDERS

Marcel Wanders is a leading product and interior designer, art director, and founder of Moooi. Wanders' fame started with his iconic Knotted Chair, and he now designs for some of the biggest design manufacturers. His work continues to be covered in leading design publications and his designs have been selected for some of the most important design exhibitions in the world.

📍 **ALESSI USA**, 41 Madison Avenue, 6th Floor, New York, NY 10010

☎ **+1 (718) 213-5304**

🌐 **www.alessi.com**

✉ **david.dimeco@alessi.com**



Dressed Air Saucer Mocha Cup

SAUCER FOR MOCHA IN MELAMINE WITH RELIEF DECORATION, WHITE.

CODE MW72/77 W LIST \$ 44.00

"Marcel Wanders' talent for decoration led to the creation of "Dressed En Plein Air". A set for outdoor or informal lunches, consisting of plates, serving elements, glasses and cutlery.

Made with durable materials, ""Dressed en plein air"" is a collection aimed at the outdoor world, which answers the need to eliminate disposable plastic."

- Quick ship USA



DIMENSIONS

PRODUCT

D: 6.3"

DESIGNER



MARCEL WANDERS

Marcel Wanders is a leading product and interior designer, art director, and founder of Moooi. Wanders' fame started with his iconic Knotted Chair, and he now designs for some of the biggest design manufacturers. His work continues to be covered in leading design publications and his designs have been selected for some of the most important design exhibitions in the world.

📍 **ALESSI USA**, 41 Madison Avenue, 6th Floor, New York, NY 10010

☎ **+1 (718) 213-5304**

🌐 **www.alessi.com**

✉ **david.dimeco@alessi.com**



Mami Flat Plate

DINNER PLATE IN WHITE PORCELAIN.

CODE SG53/1 W LIST \$ 252.00

"Mami" completes the family with its lines that rediscover tradition and simplicity: this is the Alessi table set by Stefano Giovannoni, a designer who, with his unique mix of expressive talent, humour and finger on the public pulse, had such a profound influence on the 1990s. The acknowledged master of playfulness, a major new element in Giovannoni's current poetry is certainly represented by the desire to move in a new direction that can be defined as a search for classicism, harmony and archetypality, the whole being inflected (as only Giovannoni can) on the "maternal code".

- Quick ship USA



DIMENSIONS

PRODUCT

D: 1.83"

DESIGNER



STEFANO GIOVANNONI

Born in La Spezia in 1954, Stefano as an architect and designer was taught by Buti at Florence University. In the early 80's he founded the King-Kong Production Group along with Guido Venturini. A technical designer par excellence he has industrial design in his DNA and the capacity to understand public sentiment like no other designer mentioned in this catalogue. His projects began with the Girotondo (1989 designed with Guido Venturini) and the first transparent objects in plastic from the Family Follows Fiction series (1993). There is a huge number of his items in the Officina Alessi, Alessi and A di Alessi catalogues.



Mami Soup Plate

SOUP BOWL IN WHITE PORCELAIN.

CODE SG53/2 LIST \$ 180.00

"Mami" completes the family with its lines that rediscover tradition and simplicity: this is the Alessi table set by Stefano Giovannoni, a designer who, with his unique mix of expressive talent, humour and finger on the public pulse, had such a profound influence on the 1990s. The acknowledged master of playfulness, a major new element in Giovannoni's current poetry is certainly represented by the desire to move in a new direction that can be defined as a search for classicism, harmony and archetypality, the whole being inflected (as only Giovannoni can) on the "maternal code".

- Quick ship USA



DIMENSIONS

PRODUCT

D: 9.45"

DESIGNER



STEFANO GIOVANNONI

Born in La Spezia in 1954, Stefano as an architect and designer was taught by Buti at Florence University. In the early 80's he founded the King-Kong Production Group along with Guido Venturini. A technical designer par excellence he has industrial design in his DNA and the capacity to understand public sentiment like no other designer mentioned in this catalogue. His projects began with the Girotondo (1989 designed with Guido Venturini) and the first transparent objects in plastic from the Family Follows Fiction series (1993). There is a huge number of his items in the Officina Alessi, Alessi and A di Alessi catalogues.



Mami Bowl

BOWL IN WHITE PORCELAIN.

CODE SG53/3 **LIST** \$ 330.00

"Mami" completes the family with its lines that rediscover tradition and simplicity: this is the Alessi table set by Stefano Giovannoni, a designer who, with his unique mix of expressive talent, humour and finger on the public pulse, had such a profound influence on the 1990s. The acknowledged master of playfulness, a major new element in Giovannoni's current poetry is certainly represented by the desire to move in a new direction that can be defined as a search for classicism, harmony and archetypality, the whole being inflected (as only Giovannoni can) on the "maternal code".

- Quick ship USA



DIMENSIONS

PRODUCT

D: 7.48"

DESIGNER



STEFANO GIOVANNONI

Born in La Spezia in 1954, Stefano as an architect and designer was taught by Buti at Florence University. In the early 80's he founded the King-Kong Production Group along with Guido Venturini. A technical designer par excellence he has industrial design in his DNA and the capacity to understand public sentiment like no other designer mentioned in this catalogue. His projects began with the Girotondo (1989 designed with Guido Venturini) and the first transparent objects in plastic from the Family Follows Fiction series (1993). There is a huge number of his items in the Officina Alessi, Alessi and A di Alessi catalogues.



Mami Dessert Plate

SIDE PLATE IN WHITE PORCELAIN.

CODE SG53/5 LIST \$ 156.00

"Mami" completes the family with its lines that rediscover tradition and simplicity: this is the Alessi table set by Stefano Giovannoni, a designer who, with his unique mix of expressive talent, humour and finger on the public pulse, had such a profound influence on the 1990s. The acknowledged master of playfulness, a major new element in Giovannoni's current poetry is certainly represented by the desire to move in a new direction that can be defined as a search for classicism, harmony and archetypality, the whole being inflected (as only Giovannoni can) on the "maternal code".

- Quick ship USA



DIMENSIONS

PRODUCT

D: 7.88"

DESIGNER



STEFANO GIOVANNONI

Born in La Spezia in 1954, Stefano as an architect and designer was taught by Buti at Florence University. In the early 80's he founded the King-Kong Production Group along with Guido Venturini. A technical designer par excellence he has industrial design in his DNA and the capacity to understand public sentiment like no other designer mentioned in this catalogue. His projects began with the Girotondo (1989 designed with Guido Venturini) and the first transparent objects in plastic from the Family Follows Fiction series (1993). There is a huge number of his items in the Officina Alessi, Alessi and A di Alessi catalogues.

📍 **ALESSI USA**, 41 Madison Avenue, 6th Floor, New York, NY 10010

☎ **+1 (718) 213-5304**

🌐 **www.alessi.com**

✉ **david.dimeco@alessi.com**



Mami Salad Bowl

SALAD BOWL IN WHITE PORCELAIN.

CODE SG53/38 LIST \$ 150.00

"Mami" completes the family with its lines that rediscover tradition and simplicity: this is the Alessi table set by Stefano Giovannoni, a designer who, with his unique mix of expressive talent, humour and finger on the public pulse, had such a profound influence on the 1990s. The acknowledged master of playfulness, a major new element in Giovannoni's current poetry is certainly represented by the desire to move in a new direction that can be defined as a search for classicism, harmony and archetypality, the whole being inflected (as only Giovannoni can) on the "maternal code".

- Quick ship USA



DIMENSIONS

PRODUCT

D: 1.83"

DESIGNER



STEFANO GIOVANNONI

Born in La Spezia in 1954, Stefano as an architect and designer was taught by Buti at Florence University. In the early 80's he founded the King-Kong Production Group along with Guido Venturini. A technical designer par excellence he has industrial design in his DNA and the capacity to understand public sentiment like no other designer mentioned in this catalogue. His projects began with the Girotondo (1989 designed with Guido Venturini) and the first transparent objects in plastic from the Family Follows Fiction series (1993). There is a huge number of his items in the Officina Alessi, Alessi and A di Alessi catalogues.

📍 **ALESSI USA**, 41 Madison Avenue, 6th Floor, New York, NY 10010

☎ **+1 (718) 213-5304**

🌐 **www.alessi.com**

✉ **david.dimeco@alessi.com**



Mami Small Bowl

SMALL BOWL IN WHITE PORCELAIN.

CODE SG53/54 LIST \$ 252.00

"Mami" completes the family with its lines that rediscover tradition and simplicity: this is the Alessi table set by Stefano Giovannoni, a designer who, with his unique mix of expressive talent, humour and finger on the public pulse, had such a profound influence on the 1990s. The acknowledged master of playfulness, a major new element in Giovannoni's current poetry is certainly represented by the desire to move in a new direction that can be defined as a search for classicism, harmony and archetypality, the whole being inflected (as only Giovannoni can) on the "maternal code".

- Quick ship USA



DIMENSIONS

PRODUCT

D: 5.71"

DESIGNER



STEFANO GIOVANNONI

Born in La Spezia in 1954, Stefano as an architect and designer was taught by Buti at Florence University. In the early 80's he founded the King-Kong Production Group along with Guido Venturini. A technical designer par excellence he has industrial design in his DNA and the capacity to understand public sentiment like no other designer mentioned in this catalogue. His projects began with the Girotondo (1989 designed with Guido Venturini) and the first transparent objects in plastic from the Family Follows Fiction series (1993). There is a huge number of his items in the Officina Alessi, Alessi and A di Alessi catalogues.



Mami Saucer For Mocha Cup

SAUCER FOR MOCHA CUP IN WHITE PORCELAIN.

CODE SG53/77 LIST \$ 78.00

"Mami" completes the family with its lines that rediscover tradition and simplicity: this is the Alessi table set by Stefano Giovannoni, a designer who, with his unique mix of expressive talent, humour and finger on the public pulse, had such a profound influence on the 1990s. The acknowledged master of playfulness, a major new element in Giovannoni's current poetry is certainly represented by the desire to move in a new direction that can be defined as a search for classicism, harmony and archetypality, the whole being inflected (as only Giovannoni can) on the "maternal code".

- Quick ship USA



DIMENSIONS

PRODUCT

D: 4.33"

DESIGNER



STEFANO GIOVANNONI

Born in La Spezia in 1954, Stefano as an architect and designer was taught by Buti at Florence University. In the early 80's he founded the King-Kong Production Group along with Guido Venturini. A technical designer par excellence he has industrial design in his DNA and the capacity to understand public sentiment like no other designer mentioned in this catalogue. His projects began with the Girotondo (1989 designed with Guido Venturini) and the first transparent objects in plastic from the Family Follows Fiction series (1993). There is a huge number of his items in the Officina Alessi, Alessi and A di Alessi catalogues.



Mami Saucer For Teacup

SAUCER FOR TEACUP IN WHITE PORCELAIN.

CODE SG53/79 **LIST** \$ 96.00

"Mami" completes the family with its lines that rediscover tradition and simplicity: this is the Alessi table set by Stefano Giovannoni, a designer who, with his unique mix of expressive talent, humour and finger on the public pulse, had such a profound influence on the 1990s. The acknowledged master of playfulness, a major new element in Giovannoni's current poetry is certainly represented by the desire to move in a new direction that can be defined as a search for classicism, harmony and archetypicality, the whole being inflected (as only Giovannoni can) on the "maternal code".

- Quick ship USA

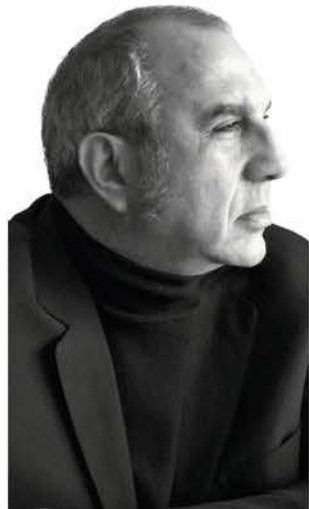


DIMENSIONS

PRODUCT

D: 6.3"

DESIGNER



STEFANO GIOVANNONI

Born in La Spezia in 1954, Stefano as an architect and designer was taught by Buti at Florence University. In the early 80's he founded the King-Kong Production Group along with Guido Venturini. A technical designer par excellence he has industrial design in his DNA and the capacity to understand public sentiment like no other designer mentioned in this catalogue. His projects began with the Girotondo (1989 designed with Guido Venturini) and the first transparent objects in plastic from the Family Follows Fiction series (1993). There is a huge number of his items in the Officina Alessi, Alessi and A di Alessi catalogues.



Mami Saucer For Coffee Cup

SAUCER FOR COFFEE CUP IN WHITE PORCELAIN.

CODE SG53/88 **LIST** \$ 102.00

"Mami" completes the family with its lines that rediscover tradition and simplicity: this is the Alessi table set by Stefano Giovannoni, a designer who, with his unique mix of expressive talent, humour and finger on the public pulse, had such a profound influence on the 1990s. The acknowledged master of playfulness, a major new element in Giovannoni's current poetry is certainly represented by the desire to move in a new direction that can be defined as a search for classicism, harmony and archetypicality, the whole being inflected (as only Giovannoni can) on the "maternal code".

- Quick ship USA



DIMENSIONS

PRODUCT

D: 5.12"

DESIGNER



STEFANO GIOVANNONI

Born in La Spezia in 1954, Stefano as an architect and designer was taught by Buti at Florence University. In the early 80's he founded the King-Kong Production Group along with Guido Venturini. A technical designer par excellence he has industrial design in his DNA and the capacity to understand public sentiment like no other designer mentioned in this catalogue. His projects began with the Girotondo (1989 designed with Guido Venturini) and the first transparent objects in plastic from the Family Follows Fiction series (1993). There is a huge number of his items in the Officina Alessi, Alessi and A di Alessi catalogues.

📍 **ALESSI USA**, 41 Madison Avenue, 6th Floor, New York, NY 10010

☎ **+1 (718) 213-5304**

🌐 **www.alessi.com**

✉ **david.dimeco@alessi.com**



Jasper Morrison Platebowlcup Collection Dining Plate

DINING PLATE IN WHITE PORCELAIN.

CODE AJM28/1 **LIST** \$ 68.00

"This is all you need to set out a great daily table." That's how Jasper Morrison described the porcelain and glass services that accompany the KnifeForkSpoon cutlery, so forming Alessi's first offering of a complete "entry price" service - an expression intended to be a mark of quality, seeing as how no compromise was accepted for the quality of the design. Quite the opposite: the search for "normality" in Jasper Morrison's work gives his designs an aura of sophisticated simplicity that achieves one of the ambitions of the "A di Alessi" brand very well.

- Quick ship USA



DIMENSIONS

PRODUCT

D: 1.83"

DESIGNER



JASPER MORRISON

Jasper Morrison is an English product and furniture designer known for his refined and simplistic style, once quoted as saying "Objects should never shout". His work has been widely exhibited and is held in the permanent collections of many prominent institutions, including the Design Museum in London, the Vitra Design Museum in Germany, the Museum of Modern Art (MoMA) in New York, and several others. Morrison has designed for several global manufactures, including Alessi, Cappellini, Vitra, Magis, Flos and Sony, and has received many awards throughout his career, including the Compasso d'Oro and the Good Design Award.

📍 **ALESSI USA**, 41 Madison Avenue, 6th Floor, New York, NY 10010

☎ **+1 (718) 213-5304**

🌐 **www.alessi.com**

✉ **david.dimeco@alessi.com**



Jasper Morrison Platebowlcup Collection Soup Bowl

SOUP BOWL IN WHITE PORCELAIN.

CODE AJM28/2 LIST \$ 56.00

"This is all you need to set out a great daily table." That's how Jasper Morrison described the porcelain and glass services that accompany the KnifeForkSpoon cutlery, so forming Alessi's first offering of a complete "entry price" service - an expression intended to be a mark of quality, seeing as how no compromise was accepted for the quality of the design. Quite the opposite: the search for "normality" in Jasper Morrison's work gives his designs an aura of sophisticated simplicity that achieves one of the ambitions of the "A di Alessi" brand very well.

- Quick ship USA



DIMENSIONS

PRODUCT

L: 14.18"

W: 9.85"

D: 8.66"

DESIGNER



JASPER MORRISON

Jasper Morrison is an English product and furniture designer known for his refined and simplistic style, once quoted as saying "Objects should never shout". His work has been widely exhibited and is held in the permanent collections of many prominent institutions, including the Design Museum in London, the Vitra Design Museum in Germany, the Museum of Modern Art (MoMA) in New York, and several others. Morrison has designed for several global manufactures, including Alessi, Cappellini, Vitra, Magis, Flos and Sony, and has received many awards throughout his career, including the Compasso d'Oro and the Good Design Award.

📍 **ALESSI USA**, 41 Madison Avenue, 6th Floor, New York, NY 10010

☎ **+1 (718) 213-5304**

🌐 **www.alessi.com**

✉ **david.dimeco@alessi.com**



Jasper Morrison PlateBowlCup Collection Side Plate

SIDE PLATE IN WHITE PORCELAIN.

CODE AJM28/5 LIST \$ 56.00

<<“PlateBowlCup” bone china tableware and “Glass Family” glasses take their place alongside the “KnifeForkSpoon” cutlery (2005), thus forming the first complete Alessi tableware collection “entry level” in our catalogues. It gives me great pleasure to use the term “entry level”, which I consider a kind of title of ‘merit’. It is true that the price of these household objects is highly accessible, but this has not compromised the quality of design. We feel that this design neatly expresses the contribution that “A di Alessi” has made to truly democratic design. Jasper has said: “I like the idea of a democratic wine glass which is slightly more formal than the others, to be used to give the table an easy aspect of a ‘dinner’ rather than just dinner”. I would like to add that his quest for anti-glamour “normality” paradoxically gives his designs an air of sophisticated simplicity, which is a good description of one of the ambitions of the “A di Alessi” brand>>. (Alberto Alessi)

- Quick ship USA

DIMENSIONS

PRODUCT

D: 7.88”

DESIGNER



JASPER MORRISON

Jasper Morrison is an English product and furniture designer known for his refined and simplistic style, once quoted as saying “Objects should never shout”. His work has been widely exhibited and is held in the permanent collections of many prominent institutions, including the Design Museum in London, the Vitra Design Museum in Germany, the Museum of Modern Art (MoMA) in New York, and several others. Morrison has designed for several global manufactures, including Alessi, Cappellini, Vitra, Magis, Flos and Sony, and has received many awards throughout his career, including the Compasso d’Oro and the Good Design Award.



Jasper Morrison Platebowlcup Collection Ov. Serving Pl.

OVAL SERVING PLATE IN WHITE PORCELAIN.

CODE AJM28/22 LIST \$ 80.00

"This is all you need to set out a great daily table." That's how Jasper Morrison described the porcelain and glass services that accompany the KnifeForkSpoon cutlery, so forming Alessi's first offering of a complete "entry price" service - an expression intended to be a mark of quality, seeing as how no compromise was accepted for the quality of the design. Quite the opposite: the search for "normality" in Jasper Morrison's work gives his designs an aura of sophisticated simplicity that achieves one of the ambitions of the "A di Alessi" brand very well.

- Quick ship USA



DIMENSIONS

PRODUCT

D: 7.88"

DESIGNER



JASPER MORRISON

Jasper Morrison is an English product and furniture designer known for his refined and simplistic style, once quoted as saying "Objects should never shout". His work has been widely exhibited and is held in the permanent collections of many prominent institutions, including the Design Museum in London, the Vitra Design Museum in Germany, the Museum of Modern Art (MoMA) in New York, and several others. Morrison has designed for several global manufactures, including Alessi, Cappellini, Vitra, Magis, Flos and Sony, and has received many awards throughout his career, including the Compasso d'Oro and the Good Design Award.

📍 **ALESSI USA**, 41 Madison Avenue, 6th Floor, New York, NY 10010

☎ **+1 (718) 213-5304**

🌐 **www.alessi.com**

✉ **david.dimeco@alessi.com**



Jasper Morrison Platebowlcup Collection Salad Serving Bowl

SALAD SERVING BOWL IN WHITE PORCELAIN.

CODE AJM28/3821 LIST \$ 34.00

"PlateBowlCup" bone china tableware and "Glass Family" glasses take their place alongside the "KnifeForkSpoon" cutlery (2005), thus forming the first complete Alessi tableware collection "entry level" in our catalogues. It gives me great pleasure to use the term "entry level", which I consider a kind of title of 'merit'. It is true that the price of these household objects is highly accessible, but this has not compromised the quality of design. We feel that this design neatly expresses the contribution that "A di Alessi" has made to truly democratic design. Jasper has said: "I like the idea of a democratic wine glass which is slightly more formal than the others, to be used to give the table an easy aspect of a 'dinner' rather than just dinner". I would like to add that his quest for anti-glamour "normality" paradoxically gives his designs an air of sophisticated simplicity, which is a good description of one of the ambitions of the "A di Alessi" brand>>. (Alberto Alessi)

- Quick ship USA



DIMENSIONS

PRODUCT

D: 8.27"

C: 5.7 fl oz

DESIGNER



JASPER MORRISON

Jasper Morrison is an English product and furniture designer known for his refined and simplistic style, once quoted as saying "Objects should never shout". His work has been widely exhibited and is held in the permanent collections of many prominent institutions, including the Design Museum in London, the Vitra Design Museum in Germany, the Museum of Modern Art (MoMA) in New York, and several others. Morrison has designed for several global manufactures, including Alessi, Cappellini, Vitra, Magis, Flos and Sony, and has received many awards throughout his career, including the Compasso d'Oro and the Good Design Award.

📍 **ALESSI USA**, 41 Madison Avenue, 6th Floor, New York, NY 10010

☎ +1 (718) 213-5304

🌐 www.alessi.com

✉ david.dimeco@alessi.com



Jasper Morrison Platebowlcup Collection Salad Serving Bowl

SALAD SERVING BOWL IN WHITE PORCELAIN.

CODE AJM28/3826 **LIST** \$ 44.00

"PlateBowlCup" bone china tableware and "Glass Family" glasses take their place alongside the "KnifeForkSpoon" cutlery (2005), thus forming the first complete Alessi tableware collection "entry level" in our catalogues. It gives me great pleasure to use the term "entry level", which I consider a kind of title of 'merit'. It is true that the price of these household objects is highly accessible, but this has not compromised the quality of design. We feel that this design neatly expresses the contribution that "A di Alessi" has made to truly democratic design. Jasper has said: "I like the idea of a democratic wine glass which is slightly more formal than the others, to be used to give the table an easy aspect of a 'dinner' rather than just dinner". I would like to add that his quest for anti-glamour "normality" paradoxically gives his designs an air of sophisticated simplicity, which is a good description of one of the ambitions of the "A di Alessi" brand. (Alberto Alessi)

- Quick ship USA



DIMENSIONS

PRODUCT

D: 1.24"

C: 111.6 fl oz

DESIGNER



JASPER MORRISON

Jasper Morrison is an English product and furniture designer known for his refined and simplistic style, once quoted as saying "Objects should never shout". His work has been widely exhibited and is held in the permanent collections of many prominent institutions, including the Design Museum in London, the Vitra Design Museum in Germany, the Museum of Modern Art (MoMA) in New York, and several others. Morrison has designed for several global manufactures, including Alessi, Cappellini, Vitra, Magis, Flos and Sony, and has received many awards throughout his career, including the Compasso d'Oro and the Good Design Award.



Jasper Morrison PlateBowlCup Collection Dessert Bowl

DESSERT BOWL IN WHITE PORCELAIN.

CODE AJM28/54 **LIST** \$ 64.00

"PlateBowlCup" bone china tableware and "Glass Family" glasses take their place alongside the "KnifeForkSpoon" cutlery (2005), thus forming the first complete Alessi tableware collection "entry level" in our catalogues. It gives me great pleasure to use the term "entry level", which I consider a kind of title of 'merit'. It is true that the price of these household objects is highly accessible, but this has not compromised the quality of design. We feel that this design neatly expresses the contribution that "A di Alessi" has made to truly democratic design. Jasper has said: "I like the idea of a democratic wine glass which is slightly more formal than the others, to be used to give the table an easy aspect of a 'dinner' rather than just dinner". I would like to add that his quest for anti-glamour "normality" paradoxically gives his designs an air of sophisticated simplicity, which is a good description of one of the ambitions of the "A di Alessi" brand. (Alberto Alessi)

- Quick ship USA



DIMENSIONS

PRODUCT

D: 5.51"

C: 16.9 fl oz

DESIGNER



JASPER MORRISON

Jasper Morrison is an English product and furniture designer known for his refined and simplistic style, once quoted as saying "Objects should never shout". His work has been widely exhibited and is held in the permanent collections of many prominent institutions, including the Design Museum in London, the Vitra Design Museum in Germany, the Museum of Modern Art (MoMA) in New York, and several others. Morrison has designed for several global manufactures, including Alessi, Cappellini, Vitra, Magis, Flos and Sony, and has received many awards throughout his career, including the Compasso d'Oro and the Good Design Award.

📍 **ALESSI USA**, 41 Madison Avenue, 6th Floor, New York, NY 10010

☎ +1 (718) 213-5304

🌐 www.alessi.com

✉ david.dimeco@alessi.com



Jasper Morrison Platebowlcup Collection Dessert Bowl

MOCHA CUP IN WHITE PORCELAIN.

CODE AJM28/76 **LIST** \$ 36.00

"PlateBowlCup" bone china tableware and "Glass Family" glasses take their place alongside the "KnifeForkSpoon" cutlery (2005), thus forming the first complete Alessi tableware collection "entry level" in our catalogues. It gives me great pleasure to use the term "entry level", which I consider a kind of title of 'merit'. It is true that the price of these household objects is highly accessible, but this has not compromised the quality of design. We feel that this design neatly expresses the contribution that "A di Alessi" has made to truly democratic design. Jasper has said: "I like the idea of a democratic wine glass which is slightly more formal than the others, to be used to give the table an easy aspect of a 'dinner' rather than just dinner". I would like to add that his quest for anti-glamour "normality" paradoxically gives his designs an air of sophisticated simplicity, which is a good description of one of the ambitions of the "A di Alessi" brand. (Alberto Alessi)

- Quick ship USA



DIMENSIONS

PRODUCT

D: 2.36"

C: 2.7 fl oz

DESIGNER



JASPER MORRISON

Jasper Morrison is an English product and furniture designer known for his refined and simplistic style, once quoted as saying "Objects should never shout". His work has been widely exhibited and is held in the permanent collections of many prominent institutions, including the Design Museum in London, the Vitra Design Museum in Germany, the Museum of Modern Art (MoMA) in New York, and several others. Morrison has designed for several global manufactures, including Alessi, Cappellini, Vitra, Magis, Flos and Sony, and has received many awards throughout his career, including the Compasso d'Oro and the Good Design Award.



Jasper Morrison Platebowlcup Collection Saucer Mocha C.

SAUCER FOR MOCHA CUP IN WHITE PORCELAIN.

CODE AJM28/77 LIST \$ 30.00

"This is all you need to set out a great daily table." That's how Jasper Morrison described the porcelain and glass services that accompany the KnifeForkSpoon cutlery, so forming Alessi's first offering of a complete "entry price" service - an expression intended to be a mark of quality, seeing as how no compromise was accepted for the quality of the design. Quite the opposite: the search for "normality" in Jasper Morrison's work gives his designs an aura of sophisticated simplicity that achieves one of the ambitions of the "A di Alessi" brand very well.

- Quick ship USA



DIMENSIONS

PRODUCT

D: 4.73"

DESIGNER



JASPER MORRISON

Jasper Morrison is an English product and furniture designer known for his refined and simplistic style, once quoted as saying "Objects should never shout". His work has been widely exhibited and is held in the permanent collections of many prominent institutions, including the Design Museum in London, the Vitra Design Museum in Germany, the Museum of Modern Art (MoMA) in New York, and several others. Morrison has designed for several global manufactures, including Alessi, Cappellini, Vitra, Magis, Flos and Sony, and has received many awards throughout his career, including the Compasso d'Oro and the Good Design Award.



Jasper Morrison Platebowlcup Collection Saucer Tea Cup

SAUCER FOR TEACUP IN WHITE PORCELAIN.

CODE AJM28/79 LIST \$ 34.00

"This is all you need to set out a great daily table." That's how Jasper Morrison described the porcelain and glass services that accompany the KnifeForkSpoon cutlery, so forming Alessi's first offering of a complete "entry price" service - an expression intended to be a mark of quality, seeing as how no compromise was accepted for the quality of the design. Quite the opposite: the search for "normality" in Jasper Morrison's work gives his designs an aura of sophisticated simplicity that achieves one of the ambitions of the "A di Alessi" brand very well.

- Quick ship USA



DIMENSIONS

PRODUCT

D: 5.91"

DESIGNER



JASPER MORRISON

Jasper Morrison is an English product and furniture designer known for his refined and simplistic style, once quoted as saying "Objects should never shout". His work has been widely exhibited and is held in the permanent collections of many prominent institutions, including the Design Museum in London, the Vitra Design Museum in Germany, the Museum of Modern Art (MoMA) in New York, and several others. Morrison has designed for several global manufactures, including Alessi, Cappellini, Vitra, Magis, Flos and Sony, and has received many awards throughout his career, including the Compasso d'Oro and the Good Design Award.



Pepa Hors-D'oeuvre Set

FOUR-SECTION HORS-D'OEUVRE DISH IN 18/10 STAINLESS STEEL MIRROR POLISHED.

CODE LC14 - PEPA LIST \$ 170.00

The name of the Hors-d'oeuvre dish is a homage to the characters from the novels of the poet Foix, who in turn lends his name to the pioneering Tray from this collection.

- Quick ship USA



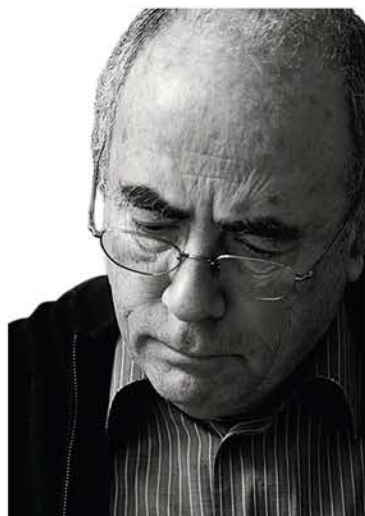
DIMENSIONS

PRODUCT

H: 1.58"

D: 12.72"

DESIGNER



LLUÍS CLOTET

Born in Barcelona in 1941. He receives the architecture degree in the "Escuela Técnica Superior de Arquitectura" of Barcelona in 1965. In that school, he was a drawing teacher from 1977 to 1984. In 1964 he founds Studio Per in cooperation with the architects Pep Bonet, Cristian Cirici and Oscar Tusquets. With the latter, he collaborates in multiple projects until 1983. In 1984, he joins in partnership with Ignacio Paricio for the architectonic production until the year 2008. He is also a founding partner of the firm "B.D Ediciones de Diseño" There are collections of his work in many museums.

📍 **ALESSI USA**, 41 Madison Avenue, 6th Floor, New York, NY 10010

☎ +1 (718) 213-5304

🌐 www.alessi.com

✉ david.dimeco@alessi.com



Fruit Salad Bowl Polished

SMALL BOWL IN 18/10 STAINLESS STEEL MIRROR POLISHED.

CODE JM16/12 L LIST \$ 176.00

- Quick ship USA



DIMENSIONS

PRODUCT

C: 11.2 fl oz

D: 4.73"

DESIGNER



JASPER MORRISON

Jasper Morrison is an English product and furniture designer known for his refined and simplistic style, once quoted as saying "Objects should never shout". His work has been widely exhibited and is held in the permanent collections of many prominent institutions, including the Design Museum in London, the Vitra Design Museum in Germany, the Museum of Modern Art (MoMA) in New York, and several others. Morrison has designed for several global manufactures, including Alessi, Cappellini, Vitra, Magis, Flos and Sony, and has received many awards throughout his career, including the Compasso d'Oro and the Good Design Award.

📍 **ALESSI USA**, 41 Madison Avenue, 6th Floor, New York, NY 10010

☎ +1 (718) 213-5304

🌐 www.alessi.com

✉ david.dimeco@alessi.com



Citrus Basket

CITRUS BASKET IN 18/10 STAINLESS STEEL MIRROR POLISHED.

CODE 370/ **LIST** \$ 165.00

Citrus basket in stainless steel with wire work. In production since 1952, this bowl has become a classic, a true archetype of bar service "essential" objects, with its proportions, lightness and function the inspiration behind all the fruit bowls in the Alessi catalogue.

- Quick ship USA



DIMENSIONS

PRODUCT

H: 8.86"

D: 8.66"

DESIGNER



UFFICIO TECNICO ALESSI

Ufficio Tecnico Alessi, also known as the Alessi Technical Office, originated as a small product development workshop established 1921 by Giovanni Alessi and his brother and known for its impeccable quality and craftsmanship of household items and tableware in materials such as copper, brass, and nickel silver. During the 1970's Ufficio Tecnico Alessi began to explore partnerships with external designers, which marked a gradual shift away from product design and specializing now exclusively in the development of projects.

📍 **ALESSI USA**, 41 Madison Avenue, 6th Floor, New York, NY 10010

☎ **+1 (718) 213-5304**

🌐 **www.alessi.com**

✉ **david.dimeco@alessi.com**



Citrus Basket

CITRUS BASKET IN 18/10 STAINLESS STEEL MIRROR POLISHED.

CODE 370/19 **LIST** \$ 165.00

Citrus basket in stainless steel with wire work. In production since 1952, this bowl has become a classic, a true archetype of bar service "essential" objects, with its proportions, lightness and function the inspiration behind all the fruit bowls in the Alessi catalogue.

- Quick ship USA



DIMENSIONS

PRODUCT

H: 8.86"

D: 8.66"

DESIGNER



UFFICIO TECNICO ALESSI

Ufficio Tecnico Alessi, also known as the Alessi Technical Office, originated as a small product development workshop established 1921 by Giovanni Alessi and his brother and known for its impeccable quality and craftsmanship of household items and tableware in materials such as copper, brass, and nickel silver. During the 1970's Ufficio Tecnico Alessi began to explore partnerships with external designers, which marked a gradual shift away from product design and specializing now exclusively in the development of projects.

📍 **ALESSI USA**, 41 Madison Avenue, 6th Floor, New York, NY 10010

☎ **+1 (718) 213-5304**

🌐 **www.alessi.com**

✉ **david.dimeco@alessi.com**



Round Wire Basket

ROUND WIRE BASKET IN 18/10 STAINLESS STEEL.

CODE 826/15 **LIST** \$ 97.00

Metal wire-work has been a steady feature of household objects for centuries: with this basket, the fruit of Ufficio Tecnico Alessi's technological research on folded metal wire, Alessi began a family of containers for table and kitchen with a very basic approach that is still highly successful today.

- Quick ship USA



DIMENSIONS

PRODUCT

H: 2.17"

D: 5.91"

DESIGNER



UFFICIO TECNICO ALESSI

Ufficio Tecnico Alessi, also known as the Alessi Technical Office, originated as a small product development workshop established 1921 by Giovanni Alessi and his brother and known for its impeccable quality and craftsmanship of household items and tableware in materials such as copper, brass, and nickel silver. During the 1970's Ufficio Tecnico Alessi began to explore partnerships with external designers, which marked a gradual shift away from product design and specializing now exclusively in the development of projects.

📍 **ALESSI USA**, 41 Madison Avenue, 6th Floor, New York, NY 10010

☎ **+1 (718) 213-5304**

🌐 **www.alessi.com**

✉ **david.dimeco@alessi.com**



Round Wire Basket

ROUND WIRE BASKET IN 18/10 STAINLESS STEEL.

CODE 826/20 **LIST** \$ 135.00

Metal wire-work has been a steady feature of household objects for centuries: with this basket, the fruit of Ufficio Tecnico Alessi's technological research on folded metal wire, Alessi began a family of containers for table and kitchen with a very basic approach that is still highly successful today.

- Quick ship USA



DIMENSIONS

PRODUCT

H: 3.3"

D: 8.7"

DESIGNER



UFFICIO TECNICO ALESSI

Ufficio Tecnico Alessi, also known as the Alessi Technical Office, originated as a small product development workshop established 1921 by Giovanni Alessi and his brother and known for its impeccable quality and craftsmanship of household items and tableware in materials such as copper, brass, and nickel silver. During the 1970's Ufficio Tecnico Alessi began to explore partnerships with external designers, which marked a gradual shift away from product design and specializing now exclusively in the development of projects.

📍 **ALESSI USA**, 41 Madison Avenue, 6th Floor, New York, NY 10010

☎ **+1 (718) 213-5304**

🌐 **www.alessi.com**

✉ **david.dimeco@alessi.com**



Round Wire Basket

ROUND WIRE BASKET IN 18/10 STAINLESS STEEL.

CODE 826/24 LIST \$ 160.00

Metal wire-work has been a steady feature of household objects for centuries: with this basket, the fruit of Ufficio Tecnico Alessi's technological research on folded metal wire, Alessi began a family of containers for table and kitchen with a very basic approach that is still highly successful today.

- Quick ship USA



DIMENSIONS

PRODUCT

H: 3.35"

D: 9.65"

DESIGNER



UFFICIO TECNICO ALESSI

Ufficio Tecnico Alessi, also known as the Alessi Technical Office, originated as a small product development workshop established 1921 by Giovanni Alessi and his brother and known for its impeccable quality and craftsmanship of household items and tableware in materials such as copper, brass, and nickel silver. During the 1970's Ufficio Tecnico Alessi began to explore partnerships with external designers, which marked a gradual shift away from product design and specializing now exclusively in the development of projects.

📍 **ALESSI USA**, 41 Madison Avenue, 6th Floor, New York, NY 10010

☎ **+1 (718) 213-5304**

🌐 **www.alessi.com**

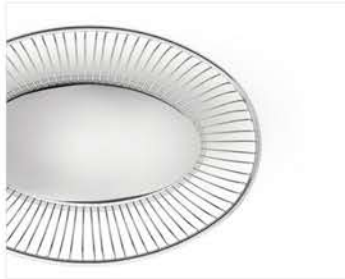
✉ **david.dimeco@alessi.com**



Oval Wire Basket

CODE 829 LIST \$ 170.00

- Quick ship USA



DIMENSIONS

PRODUCT

DESIGNER



UFFICIO TECNICO ALESSI

Ufficio Tecnico Alessi, also known as the Alessi Technical Office, originated as a small product development workshop established 1921 by Giovanni Alessi and his brother and known for its impeccable quality and craftsmanship of household items and tableware in materials such as copper, brass, and nickel silver. During the 1970's Ufficio Tecnico Alessi began to explore partnerships with external designers, which marked a gradual shift away from product design and specializing now exclusively in the development of projects.

📍 **ALESSI USA**, 41 Madison Avenue, 6th Floor, New York, NY 10010

☎ **+1 (718) 213-5304**

🌐 **www.alessi.com**

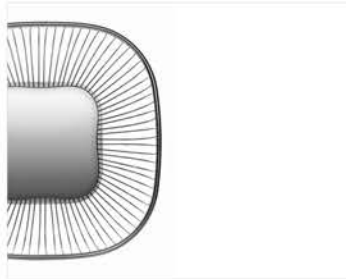
✉ **david.dimeco@alessi.com**



Square Wire Basket

CODE 845 LIST \$ 170.00

- Quick ship USA



DIMENSIONS

PRODUCT

DESIGNER



UFFICIO TECNICO ALESSI

Ufficio Tecnico Alessi, also known as the Alessi Technical Office, originated as a small product development workshop established 1921 by Giovanni Alessi and his brother and known for its impeccable quality and craftsmanship of household items and tableware in materials such as copper, brass, and nickel silver. During the 1970's Ufficio Tecnico Alessi began to explore partnerships with external designers, which marked a gradual shift away from product design and specializing now exclusively in the development of projects.

📍 **ALESSI USA**, 41 Madison Avenue, 6th Floor, New York, NY 10010

☎ **+1 (718) 213-5304**

🌐 **www.alessi.com**

✉ **david.dimeco@alessi.com**



Foix Round Tray

CODE 90039 - **FOIX LIST** \$ 210.00

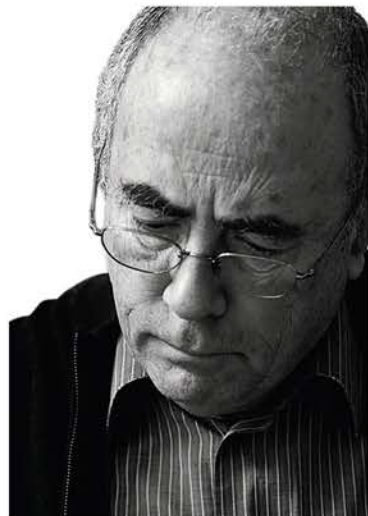
- Quick ship USA



DIMENSIONS

PRODUCT

DESIGNER



LLUÍS CLOTET

Born in Barcelona in 1941. He receives the architecture degree in the "Escuela Técnica Superior de Arquitectura" of Barcelona in 1965. In that school, he was a drawing teacher from 1977 to 1984. In 1964 he founds Studio Per in cooperation with the architects Pep Bonet, Cristian Cirici and Oscar Tusquets. With the latter, he collaborates in multiple projects until 1983. In 1984, he joins in partnership with Ignacio Paricio for the architectonic production until the year 2008. He is also a founding partner of the firm "B.D Ediciones de Diseño" There are collections of his work in many museums.

📍 **ALESSI USA**, 41 Madison Avenue, 6th Floor, New York, NY 10010

☎ **+1 (718) 213-5304**

🌐 **www.alessi.com**

✉ **david.dimeco@alessi.com**

ALESSI



Sarrià' Round Basket

CODE 90084 - SARRIÀ **LIST** \$ 170.00

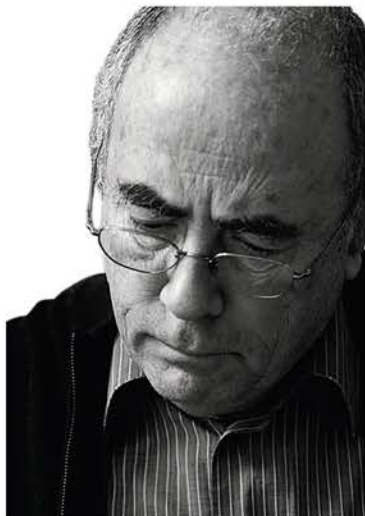
- Quick ship USA



DIMENSIONS

PRODUCT

DESIGNER



LLUÍS CLOTET

Born in Barcelona in 1941. He receives the architecture degree in the "Escuela Técnica Superior de Arquitectura" of Barcelona in 1965. In that school, he was a drawing teacher from 1977 to 1984. In 1964 he founds Studio Per in cooperation with the architects Pep Bonet, Cristian Cirici and Oscar Tusquets. With the latter, he collaborates in multiple projects until 1983. In 1984, he joins in partnership with Ignacio Paricio for the architectonic production until the year 2008. He is also a founding partner of the firm "B.D Ediciones de Diseño" There are collections of his work in many museums.

📍 **ALESSI USA**, 41 Madison Avenue, 6th Floor, New York, NY 10010

☎ **+1 (718) 213-5304**

🌐 **www.alessi.com**

✉ **david.dimeco@alessi.com**



Human Collection Salad Bowl, Small

SALAD SERVING BOWL IN 18/10 STAINLESS STEEL.

CODE BMGS01/22 LIST \$ 140.00

The salad bowl belongs to the Human collection: the result of the partnership between the French designer Bruno Moretti and Michelin-starred chef Guy Savoy. This partnership stems from their joint passion for research, quality materials and harmonious presentation. The salad bowl represents an algebraic curve that resembles a flattened-out leaf or a heart. Elegant lines that open out generously towards the exterior make it possible to arrange and present every recipe while respecting the texture and fragility of the ingredients. It's volume allows to mix the ingredients nicely and carefully.

- Quick ship USA



DIMENSIONS

PRODUCT

H: 2.36"

C: 2.3 FL OZ

D: 8.66"

DESIGNER



MORETTI-SAVOY

A graduate of the école nationale supérieure d'art (Higher National School of Art) in Dijon in 1985, Moretti founds the 18 Aout with Fabrice Berrux and Pascal Oriol in 1987. Bruno Moretti has been working on projects in the field of design and interior architecture. A large number of his works concern "tableware": fruit bowls, trays, cutlery, kitchen utensils, having features in major exhibitions; some of his pieces were entered into the collection of the Museum of Decorative Arts in Paris. His meeting with Guy Savoy in 2012, marks the beginning of a new field of experimentation in table design. This relationship, both friendly and professional, leads to the development of several projects which take a different look at our relationship to objects and culinary habits. With Guy Savoy, Bruno Moretti proceeds with designing a set of "table art" products for the chef's new Paris restaurant at the Hôtel de la Monnaie de Paris, which opened in 2015.

📍 **ALESSI USA**, 41 Madison Avenue, 6th Floor, New York, NY 10010

☎ +1 (718) 213-5304

🌐 www.alessi.com

✉ david.dimeco@alessi.com



Human Collection Salad Bowl, Large

SALAD SERVING BOWL IN 18/10 STAINLESS STEEL.

CODE BMGS01/34 LIST \$ 310.00

The salad bowl belongs to the Human collection: the result of the partnership between the French designer Bruno Moretti and Michelin-starred chef Guy Savoy. This partnership stems from their joint passion for research, quality materials and harmonious presentation. The salad bowl represents an algebraic curve that resembles a flattened-out leaf or a heart. Elegant lines that open out generously towards the exterior make it possible to arrange and present every recipe while respecting the texture and fragility of the ingredients. It's volume allows to mix the ingredients nicely and carefully.

- Quick ship USA



DIMENSIONS

PRODUCT

H: 4.73"

C: 11.4 FL OZ

D: 13.39"

DESIGNER



MORETTI-SAVOY

A graduate of the école nationale supérieure d'art (Higher National School of Art) in Dijon in 1985, Moretti founds the 18 Aout with Fabrice Berrux and Pascal Oriol in 1987. Bruno Moretti has been working on projects in the field of design and interior architecture. A large number of his works concern "tableware": fruit bowls, trays, cutlery, kitchen utensils, having features in major exhibitions; some of his pieces were entered into the collection of the Museum of Decorative Arts in Paris. His meeting with Guy Savoy in 2012, marks the beginning of a new field of experimentation in table design. This relationship, both friendly and professional, leads to the development of several projects which take a different look at our relationship to objects and culinary habits. With Guy Savoy, Bruno Moretti proceeds with designing a set of "table art" products for the chef's new Paris restaurant at the Hôtel de la Monnaie de Paris, which opened in 2015.

📍 **ALESSI USA**, 41 Madison Avenue, 6th Floor, New York, NY 10010

☎ +1 (718) 213-5304

🌐 www.alessi.com

✉ david.dimeco@alessi.com