

**ALESSI**

# CACTUS! COLLECTION



📍 **ALESSI USA**, 41 Madison Avenue, 6th Floor, New York, NY 10010

☎ **+1 (718) 213-5304**

🌐 **www.alessi.com**

✉ **david.dimeco@alessi.com**



# ALESSI



## Cactus! Collection Fruit Bowl, Small

OPEN-WORK FRUIT BOWL IN 18/10 STAINLESS STEEL.

CODE MSA04/21 LIST \$140

Round fruit basket in 18/10 stainless steel, mirror polished, with edge decorated by laser cutting. Mirror polished. The "CACTUS!" decoration has been available since 2000 in several different trays, baskets and objects for the kitchen.

- Quick ship USA



### DIMENSIONS

#### PRODUCT

H: 3.74"

D: 8.27"

### DESIGNERS



#### CSA

The Alessi Research Centre (CSA) was set up in 1990 for two purposes: to draw up theoretical papers on topics associated with objects (to be published as books), and to coordinate work with young designers. Up until that time Alessi had only worked with "major designers", and I felt a certain degree of responsibility towards young, upcoming designers. Alberto Alessi



#### MARTA SANSONI

Marta Sansoni is an architect and designer from Florence, Italy. Her work combines geometric abstraction, spatial play, attention to detail and monochromatism, creating a harmonious relationship between light, objects, and space. She has participated in several national and international design exhibitions and competitions, and has designed products for Alessi, Bitossi, Serralunga and others.

📍 **ALESSI USA**, 41 Madison Avenue, 6th Floor, New York, NY 10010

☎ **+1 (718) 213-5304**

🌐 **www.alessi.com**

✉ **david.dimeco@alessi.com**



## Cactus! Collection Fruit Bowl, Small

OPEN-WORK FRUIT BOWL IN STEEL COLOURED WITH EPOXY RESIN, BLACK.

**CODE** MSA04/21 **LIST** \$95

Fruit bowl in steel coloured with epoxy resin, black.

The success of the "CACTUS!" range for the table, designed by Marta Sansoni and the Centro Studi Alessi, and in particular our mirror polished stainless steel fruit bowl of 2002, has led us to consider a third colour, conceived with the help of Claudia Raimondo: matte black. (Alberto Alessi)

- Quick ship USA

### DIMENSIONS

#### PRODUCT

H: 3.74"

D: 8.27"

### COLORS

MSA04/29 B  
Black

MSA04/29 W  
White

MSA04/29GR  
Green



### DESIGNERS



#### CSA

The Alessi Research Centre (CSA) was set up in 1990 for two purposes: to draw up theoretical papers on topics associated with objects (to be published as books), and to coordinate work with young designers. Up until that time Alessi had only worked with "major designers", and I felt a certain degree of responsibility towards young, upcoming designers. Alberto Alessi



#### MARTA SANSONI

Marta Sansoni is an architect and designer from Florence, Italy. Her work combines geometric abstraction, spatial play, attention to detail and monochromatism, creating a harmonious relationship between light, objects, and space. She has participated in several national and international design exhibitions and competitions, and has designed products for Alessi, Bitossi, Serralunga and others.

📍 **ALESSI USA**, 41 Madison Avenue, 6th Floor, New York, NY 10010

☎ **+1 (718) 213-5304**

🌐 **www.alessi.com**

✉ **david.dimeco@alessi.com**





## Cactus! Collection Fruit Bowl, Large

OPEN-WORK FRUIT BOWL IN 18/10 STAINLESS STEEL.

CODE MSA04/29 LIST \$95

"Round fruit basket in 18/10 stainless steel, mirror polished, with edge decorated by laser cutting. Mirror polished. The "CACTUS!" decoration has been available since 2000 in several different trays, baskets and objects for the kitchen. The success of the "Cactus!" range, and in particular our mirror polished stainless steel fruit bowl of 2002 (later available in the "Golden" and "Grey Metal" versions), has led us to consider a third colour, conceived with the help of Claudia Raimondo: matte black. (Alberto Alessi)"

- Quick ship USA



### DIMENSIONS

#### PRODUCT

H: 4.25"

D: 11.42"

### DESIGNERS

#### CSA

The Alessi Research Centre (CSA) was set up in 1990 for two purposes: to draw up theoretical papers on topics associated with objects (to be published as books), and to coordinate work with young designers. Up until that time Alessi had only worked with "major designers", and I felt a certain degree of responsibility towards young, upcoming designers. Alberto Alessi



#### MARTA SANSONI

Marta Sansoni is an architect and designer from Florence, Italy. Her work combines geometric abstraction, spatial play, attention to detail and monochromatism, creating a harmonious relationship between light, objects, and space. She has participated in several national and international design exhibitions and competitions, and has designed products for Alessi, Bitossi, Serralunga and others.



📍 **ALESSI USA**, 41 Madison Avenue, 6th Floor, New York, NY 10010

☎ **+1 (718) 213-5304**

🌐 **www.alessi.com**

✉ **david.dimeco@alessi.com**



## Cactus! Collection Fruit Bowl, Large

OPEN-WORK FRUIT BOWL IN STEEL COLOURED WITH EPOXY RESIN, BLACK.

**CODE** MSA04/29 **LIST** \$130

"Fruit bowl in steel coloured with epoxy resin, black.

The success of the "CACTUS!" range for the table, designed by Marta Sansoni and the Centro Studi Alessi, and in particular our mirror polished stainless steel fruit bowl of 2002, has led us to consider a third colour, conceived with the help of Claudia Raimondo: matte black. (Alberto Alessi)"

- Quick ship USA

### DIMENSIONS

#### PRODUCT

H: 4.25"

D: 11.42"

### COLORS

MSA04/29 B  
Black

MSA04/29 W  
White

MSA04/29GR  
Green



### DESIGNERS



#### CSA

The Alessi Research Centre (CSA) was set up in 1990 for two purposes: to draw up theoretical papers on topics associated with objects (to be published as books), and to coordinate work with young designers. Up until that time Alessi had only worked with "major designers", and I felt a certain degree of responsibility towards young, upcoming designers. Alberto Alessi



#### MARTA SANSONI

Marta Sansoni is an architect and designer from Florence, Italy. Her work combines geometric abstraction, spatial play, attention to detail and monochromatism, creating a harmonious relationship between light, objects, and space. She has participated in several national and international design exhibitions and competitions, and has designed products for Alessi, Bitossi, Serralunga and others.

📍 **ALESSI USA**, 41 Madison Avenue, 6th Floor, New York, NY 10010

☎ **+1 (718) 213-5304**

🌐 **www.alessi.com**

✉ **david.dimeco@alessi.com**



# ALESSI



## Cactus! Collection Paper Napkin Holder, Tall

OPEN-WORK PAPER NAPKIN HOLDER IN 18/10 STAINLESS STEEL MIRROR POLISHED.

**CODE** MSA08 **LIST** \$80

The delicate "CACTUS!" hole motif has graced a particularly pleasing and successful series of products and it has become one of Alessi's iconic patterns, symbolising its mastery of laser-cut steel.

- Quick ship USA



### DIMENSIONS

#### PRODUCT

H: 3.35"

L: 4.73"

W: 1.18"

### DESIGNERS

#### CSA

The Alessi Research Centre (CSA) was set up in 1990 for two purposes: to draw up theoretical papers on topics associated with objects (to be published as books), and to coordinate work with young designers. Up until that time Alessi had only worked with "major designers", and I felt a certain degree of responsibility towards young, upcoming designers. Alberto Alessi



**CENTRO STUDI  
ALESSI**

#### MARTA SANSONI

Marta Sansoni is an architect and designer from Florence, Italy. Her work combines geometric abstraction, spatial play, attention to detail and monochromatism, creating a harmonious relationship between light, objects, and space. She has participated in several national and international design exhibitions and competitions, and has designed products for Alessi, Bitossi, Serralunga and others.



📍 **ALESSI USA**, 41 Madison Avenue, 6th Floor, New York, NY 10010

☎ **+1 (718) 213-5304**

🌐 **www.alessi.com**

✉ **david.dimeco@alessi.com**

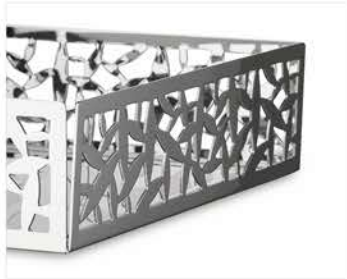
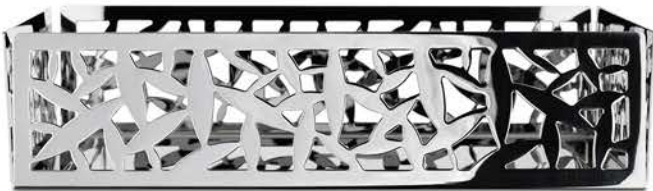
## Cactus! Collection Paper Napkin Holder, Flat

FLAT PAPER NAPKIN HOLDER WITH PIERCED EDGE IN 18/10 STAINLESS STEEL.

CODE MSA10 LIST \$155

The "CACTUS!" decoration has been available since 2000 in several different trays, baskets and objects for the kitchen.

- Quick ship USA



### DIMENSIONS

#### PRODUCT

H: 1.97"

L: 8.7"

W: 8.7"

### DESIGNERS

#### CSA

The Alessi Research Centre (CSA) was set up in 1990 for two purposes: to draw up theoretical papers on topics associated with objects (to be published as books), and to coordinate work with young designers. Up until that time Alessi had only worked with "major designers", and I felt a certain degree of responsibility towards young, upcoming designers. Alberto Alessi



#### MARTA SANSONI

Marta Sansoni is an architect and designer from Florence, Italy. Her work combines geometric abstraction, spatial play, attention to detail and monochromatism, creating a harmonious relationship between light, objects, and space. She has participated in several national and international design exhibitions and competitions, and has designed products for Alessi, Bitossi, Serralunga and others.



📍 **ALESSI USA**, 41 Madison Avenue, 6th Floor, New York, NY 10010

☎ **+1 (718) 213-5304**

🌐 **www.alessi.com**

✉ **david.dimeco@alessi.com**



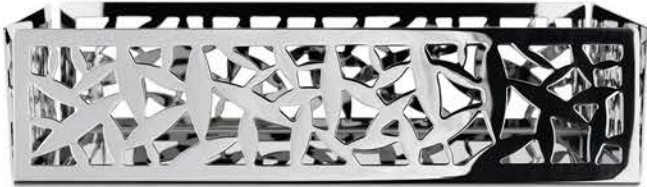
## Cactus! Collection Tea Bag Sugar Bag Holder

OPEN-WORK HOLDER FOR TEA BAGS OR SUGAR SACHETS IN 18/10 STAINLESS STEEL MIRROR POLISHED.

**CODE** MSA29 **LIST** \$80

The delicate "CACTUS!" hole motif has graced a particularly pleasing and successful series of products and it has become one of Alessi's iconic patterns, symbolising its mastery of laser-cut steel.

- Quick ship USA



### DIMENSIONS

#### PRODUCT

H: 2.17"

L: 4.57"

W: 2.24"

### DESIGNERS

#### CSA

The Alessi Research Centre (CSA) was set up in 1990 for two purposes: to draw up theoretical papers on topics associated with objects (to be published as books), and to coordinate work with young designers. Up until that time Alessi had only worked with "major designers", and I felt a certain degree of responsibility towards young, upcoming designers. Alberto Alessi



#### MARTA SANSONI

Marta Sansoni is an architect and designer from Florence, Italy. Her work combines geometric abstraction, spatial play, attention to detail and monochromatism, creating a harmonious relationship between light, objects, and space. She has participated in several national and international design exhibitions and competitions, and has designed products for Alessi, Bitossi, Serralunga and others.



📍 **ALESSI USA**, 41 Madison Avenue, 6th Floor, New York, NY 10010

☎ **+1 (718) 213-5304**

🌐 **www.alessi.com**

✉ **david.dimeco@alessi.com**