

**ALESSI**

# FLATWARE COLLECTION



📍 **ALESSI USA**, 41 Madison Avenue, 6th Floor, New York, NY 10010

☎ **+1 (718) 213-5304**

🌐 **www.alessi.com**

✉ **david.dimeco@alessi.com**



# ALESSI

## Dry Collection Cutlery Set, 24 Pieces, 4 Service

CUTLERY SET COMPOSED OF SIX TABLE SPOONS,  
SIX TABLE FORKS, SIX TABLE KNIVES, SIX COFFEE  
SPOONS IN 18/10 STAINLESS STEEL MIRROR  
POLISHED WITH MAT HANDLE.

**CODE** 4180S24 **LIST** \$460

Cutlery set composed of six table spoons, six table forks, six table knives, six coffee spoons in steel mirror polished with mat handle. The Dry cutlery set marks Alessi's debut in cutlery production. Despite gloomy initial forecasts, Alessi has amply demonstrated that the iconic and innovative force of its form, together with exceptional tactile pleasure in its use and an excellent finish, are a lot more important to the public than many long-held market prejudices would have us believe.

- Quick ship USA



### DESIGNER



#### ACHILLE CASTIGLIONI

Achille Castiglioni (1918-2002) was an Italian architect, designer and professor of design. He designed with an unmistakable blend of simplicity, irony and fun, with a close interest in the way objects are used and the potential offered by the use of technology and new materials.

📍 **ALESSI USA**, 41 Madison Avenue, 6th Floor, New York, NY 10010

☎ **+1 (718) 213-5304**

🌐 **www.alessi.com**

✉ **david.dimeco@alessi.com**

# ALESSI



## Nuovo Milano Collection Cutlery Set, 24 Pieces, 4 Service

CUTLERY SET COMPOSED OF SIX TABLE SPOONS,  
SIX TABLE FORKS, SIX TABLE KNIVES, SIX COFFEE  
SPOONS IN 18/10 STAINLESS STEEL.

**CODE** 5180S24 **LIST** \$570

Now a recognised classic and winner of the Premio Compasso d'Oro (1989) and the Bio 12 at the Ljubljana Biennale (1988), the Nuovo Milano cutlery set entered production after several years of formal experimenting, prototyping, and technological research on differentiated thicknesses in the bodies of the cutlery pieces: Ettore Sottsass wanted his cutlery to be as smooth as seaworn stones.

- Quick ship USA



### DESIGNER

#### ETTORE SOTTASS

Ettore Sottsass (1917-2007) was an Italian architect and designer, also noted for founding The Memphis Group, a postmodern collaborative focused heavily on furniture design.



📍 **ALESSI USA**, 41 Madison Avenue, 6th Floor, New York, NY 10010

☎ **+1 (718) 213-5304**

🌐 **www.alessi.com**

✉ **david.dimeco@alessi.com**

# ALESSI



## Jasper Morrison Knifeforkspoon Collection Cutlery Set, 24 Pieces, 4 Service

CUTLERY SET COMPOSED OF SIX TABLE SPOONS,  
SIX TABLE FORKS, SIX MONOBLOC TABLE KNIVES,  
SIX COFFEE SPOONS IN 18/10 STAINLESS STEEL.

**CODE** AJM22S24M **LIST** \$180

Following the typical minimalist approach that features in all Jasper Morrison's work, this design is an attempt to reduce the "cutlery-object" to its barest essence, its purest and most customary form and what might tentatively be called its definitive form, and deliberately stripped of all stylistic value and - perhaps precisely because of this - clearly recognisable as Morrison's work.

- Quick ship USA



### DESIGNER

#### JASPER MORRISON

Jasper Morrison is an English product and furniture designer known for his refined and simplistic style, once quoted as saying "Objects should never shout". His work has been widely exhibited and is held in the permanent collections of many prominent institutions worldwide.



📍 **ALESSI USA**, 41 Madison Avenue, 6th Floor, New York, NY 10010

☎ **+1 (718) 213-5304**

🌐 **www.alessi.com**

✉ **david.dimeco@alessi.com**



# ALESSI



## Itsumo Collection Cutlery Set, 24 Pieces, 4 Service

CUTLERY SET COMPOSED OF SIX TABLE SPOONS, SIX TABLE FORKS, SIX TABLE KNIVES, SIX COFFEE SPOONS IN 18/10 STAINLESS STEEL.

**CODE** ANF06S24 **LIST** \$160

- Quick ship USA



### DESIGNER



#### NAOTO FUKASAWA

Naoto Fukasawa is a Japanese product designer. Fukasawa collaborates with world-leading companies and brands. He also works as a consultant for major international manufacturers. Winner of numerous awards, including the 2018 Isamu Noguchi Award. He published a few books, the recent one is 'Naoto Fukasawa EMBODIMENT' (PHAIDON). Since 2012, he is the Director of Nihon Mingei-kan (The Japan Folk Crafts Museum).

📍 **ALESSI USA**, 41 Madison Avenue, 6th Floor, New York, NY 10010

☎ **+1 (718) 213-5304**

🌐 **www.alessi.com**

✉ **david.dimeco@alessi.com**

# ALESSI



## Amici Collection Cutlery Set, 24 Pieces, 4 Service

CUTLERY SET COMPOSED OF SIX TABLE SPOONS, SIX TABLE FORKS, SIX TABLE KNIVES, SIX COFFEE SPOONS IN 18/10 STAINLESS STEEL

**CODE** BG02S24 **LIST** \$340

- Quick ship USA



### DESIGNER



#### BIG-GAME

BIG-GAME is a product and interior design studio created in 2004 by Augustin Scott de Martinville (French), Elric Petit (Belgian) and Grégoire Jeanmonod (Swiss). It is based in Lausanne, Switzerland.

📍 **ALESSI USA**, 41 Madison Avenue, 6th Floor, New York, NY 10010

☎ **+1 (718) 213-5304**

🌐 **www.alessi.com**

✉ **david.dimeco@alessi.com**

# ALESSI



## Santiago Collection Cutlery Set, 24 Pieces, 4 Service

CUTLERY SET COMPOSED OF SIX TABLE SPOONS, SIX TABLE FORKS, SIX TABLE KNIVES, SIX COFFEE SPOONS IN 18/10 STAINLESS STEEL.

**CODE** DC05S24 **LIST** \$270

The "Santiago" Cutlery set designed by the English architect David Chipperfield. Attention to continuity of form makes the grip soft and the design startling (despite its apparent simplicity).

- Quick ship USA



### DESIGNER



#### DAVID CHIPPERFIELD

Sir David Alan Chipperfield is a British architect, lecturer, and professor, with a global practice and offices in London, Berlin, Milan, and Shanghai. His practice has won numerous national and international competitions, including the Pritzker Architecture Prize in 2023, considered to be the most prestigious award in architecture.

📍 **ALESSI USA**, 41 Madison Avenue, 6th Floor, New York, NY 10010

☎ **+1 (718) 213-5304**

🌐 **www.alessi.com**

✉ **david.dimeco@alessi.com**



# ALESSI



## Caccia Collection Cutlery Set, 24 Pieces, 4 Service

CUTLERY SET COMPOSED OF SIX TABLE SPOONS, SIX TABLE FORKS, SIX TABLE KNIVES, SIX TEA SPOONS IN 18/10 STAINLESS STEEL.

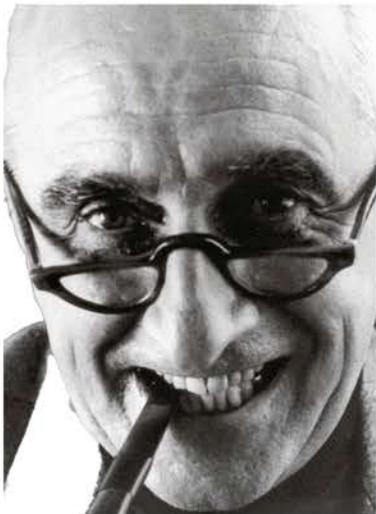
**CODE** LCD01S24 **LIST** \$660

Designed in 1938 and presented in silver at the 1940 Triennale, the Caccia series of cutlery - an excellent example of "Lombard classicism" in design - won praise from Gio Ponti for the balance it struck between an image of craftsmanship and the industrial future of household objects. Since 1990, thanks to an agreement with the Castiglioni brothers and with Luigi Caccia Dominioni and after extensive philological research to complete the series with the missing pieces, "Caccia" has been reissued by Alessi in 18/10 stainless steel and in 925/00 silver for the Officina Alessi brand.

- Quick ship USA



### DESIGNER



#### LUIGI CACCIA DOMINIONI

Born in Milan in 1913, he graduated in architecture from the Polytechnic of Milan in 1936 and in the same year he started his activity in Venice together with Livio and Pier Giacomo Castiglioni, winning the competition held at the Vimercate School. In the field of Industrial design he was considered a "pioneer" when he presented at the VII Triennial in Milan a series of radios designed together with the Castiglioni brothers. In the '50s he set up, together with Gardella and Corradi, Azucena which is a collection of the furniture and objects he designed.



#### LIVIO E PIER GIACOMO CASTIGLIONI

Born in Milan in 1911. He graduated in architecture from the Polytechnic of Milan in 1936. He started working with his brothers Achille and Pier Giacomo immediately after the war focussing their attention mainly on city planning, architecture and particularly on design. All the experiments and studies on design were possible thanks to the many exhibitions they designed and where Livio worked as light and sound technician.

📍 **ALESSI USA**, 41 Madison Avenue, 6th Floor, New York, NY 10010

☎ **+1 (718) 213-5304**

🌐 **www.alessi.com**

✉ **david.dimeco@alessi.com**



# ALESSI



## Dressed Collection Cutlery Set, 24 Pieces, 4 Service

CUTLERY/FLATWARE SET COMPOSED OF: SIX TABLE SPOONS, SIX TABLE KNIVES, SIX TABLE FORKS, SIX COFFEE SPOONS IN 18/10 STAINLESS STEEL WITH RELIEF DECORATION.

**CODE** MW03S24 **LIST** \$400

- Quick ship USA



### DESIGNER



#### MARCEL WANDERS

Marcel Wanders is a leading product and interior designer, art director, and founder of Moooi. Wanders' fame started with his iconic Knotted Chair, and he now designs for some of the biggest design manufacturers.

📍 **ALESSI USA**, 41 Madison Avenue, 6th Floor, New York, NY 10010

☎ **+1 (718) 213-5304**

🌐 **www.alessi.com**

✉ **david.dimeco@alessi.com**

# ALESSI



## Ovale Collection Cutlery Set, 24 Pieces, 4 Service

CUTLERY SET COMPOSED OF SIX TABLE SPOONS, SIX TABLE FORKS, SIX TABLE KNIVES, SIX COFFEE SPOONS IN 18/10 STAINLESS STEEL.

**CODE** REB09S24 **LIST** \$300

It belongs to the cutlery set Ovale designed by Ronan and Erwan Bouroullec. The Ovale collection strives to be original, but it also wants to be rustic and traditional. We set out in pursuit of delicate expression. This composition speaks about every day life, about breakfast, lunch, about everyone getting together for dinner. There is a desire for simplicity. (Ronan & Erwan Bouroullec)

- Quick ship USA



### DESIGNER



#### RONAN & ERWAN BOUROLLEC

Ronan and Erwan Bouroullec design for numerous manufacturers. At the same time, they maintain an experimental activity which is essential to the development of their work at Galerie Kreo, Paris. Voted Designers of the Year at the Salon du Meuble in 2002, their other awards include the Grand Prix du Design (Paris, 1998), the New Designer Award at the International Contemporary Furniture Fair (ICFF New York, 1999) and the Finn-Juhl Prize (Copenhagen, 2008).

📍 **ALESSI USA**, 41 Madison Avenue, 6th Floor, New York, NY 10010

☎ **+1 (718) 213-5304**

🌐 **www.alessi.com**

✉ **david.dimeco@alessi.com**



# ALESSI



## Mami Collection Cutlery Set, 24 Pieces, 4 Service

CUTLERY SET COMPOSED OF SIX TABLE SPOONS,  
SIX TABLE FORKS, SIX TABLE KNIVES, SIX COFFEE  
SPOONS IN 18/10 STAINLESS STEEL.

**CODE** SG38S24 **LIST** \$560

With the "Mami" cutlery series, Stefano Giovannoni's great commitment and unmatched talent directly challenge the grand masters of design. Proof positive that he is on the Mount Olympus of design. For the "super and popular" champion of playful design, his declared ambition of taking his place in Alessi history among the great designers begins to take shape.

- Quick ship USA



### DESIGNER



#### STEFANO GIOVANNONI

Born in La Spezia in 1954, Stefano as an architect and designer was taught by Buti at Florence University. In the early 80's he founded the King-Kong Production Group along with Guido Venturini. A technical designer par excellence he has industrial design in his DNA and the capacity to understand public sentiment like no other designer mentioned in this catalogue. His projects began with the Girotondo (1989 designed with Guido Venturini) and the first transparent objects in plastic from the Family Follows Fiction series (1993). There is a huge number of his items in the Officina Alessi, Alessi and A di Alessi catalogues.

📍 **ALESSI USA**, 41 Madison Avenue, 6th Floor, New York, NY 10010

☎ **+1 (718) 213-5304**

🌐 **www.alessi.com**

✉ **david.dimeco@alessi.com**

# ALESSI



## Mu Collection Cutlery Set, 24 Pieces, 4 Service

CUTLERY SET COMPOSED OF SIX TABLE SPOONS,  
SIX TABLE FORKS, SIX TABLE KNIVES, SIX COFFEE  
SPOONS IN 18/10 STAINLESS STEEL.

**CODE** TI04S24 **LIST** \$500

Sharp, yet with a touch of sensitivity and elegance... Linear, yet with an organic quality of plants... We intend to shift our familiar sensations with chopsticks onto cutlery. (Toyo Ito)

- Quick ship USA



### DESIGNER



#### TOYO ITO

Toyo Ito was born in 1941. He graduated from the University of Tokyo in 1965. In 1971, he founded his own office Urban Robot (URBOT), which was renamed Toyo Ito & Associates, Architects in 1979. He is the recipient of many awards, including Golden Lion at the Venice Biennale, Royal Gold Medal from The Royal Institute of British Architects and The Pritzker Architecture Prize, etc. Among his best-known buildings are Sendai Mediatheque; Tama Art University Library; Torres Porta Fira (Spain); Toyo Ito Museum of Architecture, Imabari; National Taiwan University, College of Social Sciences (Taiwan R.O.C.); National Taichung Theater (Taiwan R.O.C.), etc.

📍 **ALESSI USA**, 41 Madison Avenue, 6th Floor, New York, NY 10010

☎ **+1 (718) 213-5304**

🌐 **www.alessi.com**

✉ **david.dimeco@alessi.com**



# ALESSI



## Conversational Objects Cutlery Set, 16 Pieces, 4 Service + Stand

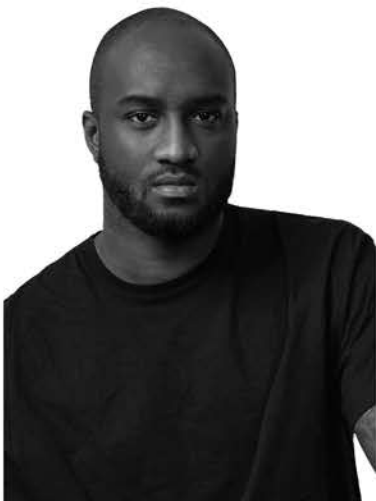
CUTLERY SET COMPOSED OF FOUR SPOONS, FOUR FORKS, FOUR KNIVES, FOUR SMALL SPOONS IN 18/10 STAINLESS STEEL. CUTLERY HOLDER IN 18/8 STAINLESS STEEL.

CODE VA02 SET LIST \$400

- Quick ship USA



### DESIGNER



#### VIRGIL ABLOH

Virgil Abloh (1980-2021) was an American artist, architect, engineer, creative director, artistic director, industrial designer, fashion designer, musician, DJ and philanthropist. Considered one of the most influential and respected designers of his generation, The New York Times described Abloh's design aesthetic as "transformative".

📍 **ALESSI USA**, 41 Madison Avenue, 6th Floor, New York, NY 10010

☎ **+1 (718) 213-5304**

🌐 **www.alessi.com**

✉ **david.dimeco@alessi.com**

# ALESSI



## Conversational Objects Cutlery Set, 4 Pieces, 1 Service

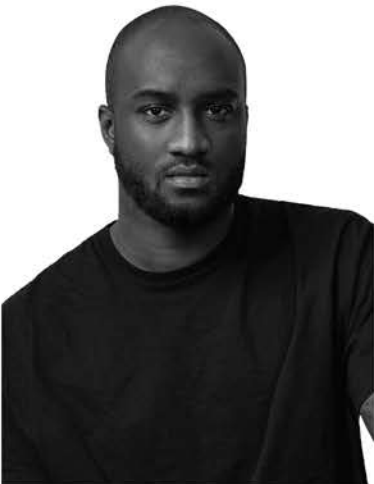
CUTLERY SET COMPOSED OF SPOON, FORK, KNIFE,  
SMALL SPOON IN 18/10 STAINLESS STEEL.

CODE VA02S4 LIST \$70

- Quick ship USA



### DESIGNER



#### VIRGIL ABLOH

Virgil Abloh (1980-2021) was an American artist, architect, engineer, creative director, artistic director, industrial designer, fashion designer, musician, DJ and philanthropist. Considered one of the most influential and respected designers of his generation, The New York Times described Abloh's design aesthetic as "transformative".

📍 **ALESSI USA**, 41 Madison Avenue, 6th Floor, New York, NY 10010

☎ **+1 (718) 213-5304**

🌐 **www.alessi.com**

✉ **david.dimeco@alessi.com**