

The CropX logo features the word "cropx" in a blue, lowercase, sans-serif font. A small green leaf icon is positioned above the letter 'x'.The logo for Williams Expert Pivot & Pump, Inc. features the name "Williams" in a large, blue, cursive script. Below it, "EXPERT PIVOT & PUMP, INC." is written in a smaller, blue, sans-serif font, all enclosed within a blue banner with a white border.

## Williams Expert Pivot & Pump

### Irrigation Management Program

**SIGN UP BY 3/31/2025** and  
save **\$100.00** per probe!

Getting your irrigation right is a cornerstone for successful crops and healthy soils. Save water and help crops perform by irrigating before plants show signs of stress. Know exactly when and how much water to apply. Precise application will save you from over-irrigating, keeping valuable nutrients in the root zone and cutting irrigation costs.

### **\$1,100 Annual Program fee includes the following**

- Seasonal lease of 1 CropX SV4 probe and data package.
- Installation & extraction of probe, antenna and battery maintenance as required.
- CropX app set up on multiple devices for the grower to view field moisture status between communications.
- Minimum of 2 weekly irrigation scheduling communications from our staff agronomist.
- Nutrition monitoring & leaching prevention from real time evaluation of EC saturated paste.
- Disease risk reports to help manage disease prevention applications.
- End of season reports provided for irrigation application and leaching events.
- 5 or more probes on one account will receive a \$50 per probe discount.
- \$900 Annual Program fee for program renewals.

For more information contact  
Dustin Kerckhove, 574-309-3071  
[dustin@expertpivot.com](mailto:dustin@expertpivot.com)







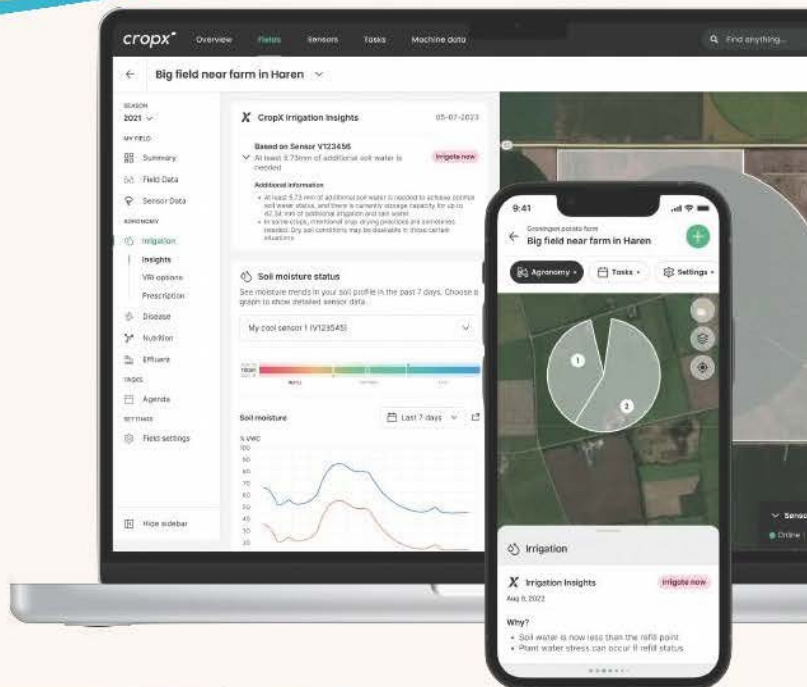
# USE EVERY DROP WISELY

## IRRIGATION MANAGEMENT

Getting irrigation right is a cornerstone for successful crops and healthy soils. Save water and help crops perform by irrigating before plants show signs of stress.

Know exactly when and how much water to apply.

Track, compare and report your irrigation practices.



### Field Map

Visual display of water fill levels in a field



### Irrigation Insights

Recommendations on when and how much to irrigate



### Variable Rate Irrigation

Match water rates with soil type or topography



### Profile Summary

Graphical view of water fill levels for past and future dates



### Soil Moisture Status

Quick reference of Refill, Optimal, or Full level status



### Irrigation Records

Record, track, and report irrigation events throughout the season