

KNOW ALL MEN BY THESE PRESENTS, THE UNDERSIGNED, BEING THE OWNERS, HAVE MADE A SUBDIVISION OF LANDS SHOWN ON THE PLAT THEREON, LYING AND BEING SITUATE WITHIN THE COUNTY OF SANTA FE, STATE OF NEW MEXICO AND THAT THE SAID SUBDIVISION IS NAMED AND SHALL BE KNOWN AS:

PUEBLOS DE RODEO ROAD

ALL THAT APPEARS ON THESE PLATS IS MADE WITH THE FREE CONSENT AND IN ACCORDANCE WITH THE DESIRES OF THE UNDERSIGNED OWNERS AND PROPRIETORS. THAT STREETS SHOWN HEREON ARE DEDICATED TO THE PUBLIC FOR USE AS SUCH; THAT THE OWNERS OF THE PROPERTY DO HEREBY DEDICATE UTILITY AND DRAINAGE EASEMENTS AS SHOWN FOR R.L. Z LTD., A LIMITED PARTNERSHIP.

Al Grubisic
AL GRUBISIC
GENERAL PARTNERS

Edwin Duncan
EDWIN DUNCAN
GENERAL PARTNERS

STATE OF NEW MEXICO, }
COUNTY OF SANTA FE } S.S.

THE FOREGOING INSTRUMENT WAS ACKNOWLEDGED BEFORE ME THIS 22 DAY OF 1977 BY EDWIN B. DUNCAN AND AL GRUBISIC.

NOTARY PUBLIC MY COMMISSION EXPIRES: 1977

APPROVALS: CITY OF SANTA FE, NEW MEXICO

APPROVED ON Oct 21 1977 BY *Harry M. ...*
CITY PLANNER

APPROVED ON Nov 9 1977 BY *...*
CITY ENGINEER

APPROVED BY THE CITY PLANNING COMMISSION AT ITS MEETING OF JULY 2 1977.
... SECRETARY *...* CHAIRMAN

ACCEPTED BY THE CITY COUNCIL, CITY OF SANTA FE, AT ITS MEETING OF AUGUST 11 1977.
... MAYOR *...* CITY CLERK

STATE OF NEW MEXICO, }
COUNTY OF SANTA FE } S.S.

THIS PROPOSED SUBDIVISION LIES WITHIN THE PLANNING AND PLATTING JURISDICTION OF THE CITY OF SANTA FE.

Edwin Duncan *Al Grubisic*

SUBSCRIBED AND SWORN TO BEFORE ME THIS 1 DAY OF 1977.
NOTARY PUBLIC MY COMMISSION EXPIRES: 1977

AMENDED CERTIFICATE

I HEREBY CERTIFY THAT THIS PLAT HAS BEEN AMENDED TO SHOW STREET NAMES. DECEMBER 12, 1977

Joseph L. Pacheco
JOSEPH L. PACHECO, P.E. AND L.S. #3905

Approved *...* 12/16/77
City Engineer

UTILITY EASEMENT

UNDERGROUND UTILITY EASEMENTS ARE HEREBY GRANTED AS SHOWN AND THROUGH THE STREET. SERVICE ENTRANCE AND EXIT EASEMENT TO EACH TRACT FOR UNDERGROUND UTILITIES ARE GRANTED BUT ARE CONFINED TO THE TRACT TO WHICH THE SERVICE IS PROVIDED.

WATER *...* POWER *...* PUBLIC SERVICE COMPANY OF NEW MEXICO

MOUNTAIN BELL *...* DATE 8-20-77

... GAS COMPANY OF NEW MEXICO DATE 8/20/77

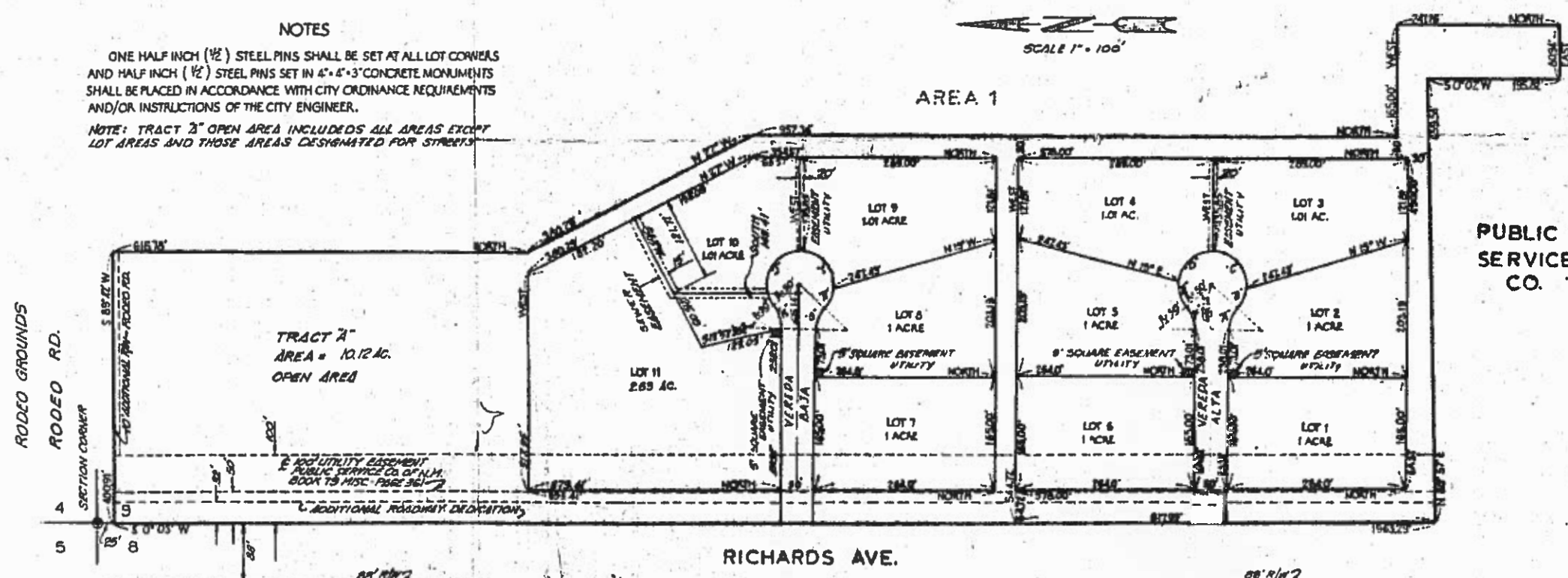
CURVE DATA

CURVE	CURVE		CHORD		RADIUS
	LENGTH	DELTA	DISTANCE	BEARING	
A	26.14	41°24'36"	35.36	N69°17'43"W	50'
B	26.14	41°24'36"	35.36	N69°17'43"W	50'
C	78.54	90°	70.71	S45°W	50'
D	78.54	90°	70.71	S45°E	50'
E	26.14	41°24'36"	35.36	N69°17'43"E	50'
F	26.14	41°24'36"	35.36	N69°17'43"E	50'
G	26.14	41°24'36"	35.36	N69°17'43"W	50'
H	26.14	41°24'36"	35.36	N69°17'43"W	50'
I	78.54	90°	70.71	S45°W	50'
J	114.68	131°24'36"	91.14	S65°29'17"E	50'
K	26.14	41°24'36"	35.36	N69°17'43"E	50'

NOTES

ONE HALF INCH (1/2") STEEL PINS SHALL BE SET AT ALL LOT CORNERS AND HALF INCH (1/2") STEEL PINS SET IN 4" x 4" x 3" CONCRETE MONUMENTS SHALL BE PLACED IN ACCORDANCE WITH CITY ORDINANCE REQUIREMENTS AND/OR INSTRUCTIONS OF THE CITY ENGINEER.

NOTE: TRACT 2" OPEN AREA INCLUDES ALL AREAS EXCEPT LOT AREAS AND THOSE AREAS DESIGNATED FOR STREETS



PUEBLOS DE RODEO ROAD AREA 2

I HEREBY CERTIFY THAT THIS PLAT IS AN ACCURATE DELINEATION OF OFFICE COMPUTATIONS BASED ON ACTUAL FIELD SURVEYS COMPLETE ON JULY 1977. ALL LOT CORNERS, POINTS OF CURVATURE AND OTHER MONUMENTS SHALL BE SET WITHIN 90 DAYS AFTER COMPLETION OF THE REQUIRED IMPROVEMENTS.

Joseph L. Pacheco
JOSEPH L. PACHECO, P.E. AND L.S. #3905

412,948
Survey of New Mexico
County of Santa Fe
Survey Office
Santa Fe, New Mexico, U.S.A.

I hereby certify that this instrument was filed for record on the 14th day of Dec. A.D. 1977 at 4:18 PM and was duly recorded in my book 57 page 41 of the records of Santa Fe County.



77-78