

KNOW ALL MEN BY THESE PRESENTS, THE UNDERSIGNED, BEING THE OWNERS, HAVE MADE A SUBDIVISION OF LANDS SHOWN ON THE PLAT THEREON, LYING AND BEING SITUATE WITHIN THE COUNTY OF SANTA FE, STATE OF NEW MEXICO, AND THAT THE SAID SUBDIVISION IS NAMED AND SHALL KNOW AS:

### PUEBLOS DE RODEO ROAD

ALL THAT APPEARS ON THESE PLATS IS MADE WITH THE FREE CONSENT AND IN ACCORDANCE WITH THE DESIRES OF THE UNDERSIGNED OWNERS AND PROPRIETORS, THAT STREETS SHOWN HEREON ARE DEDICATED TO THE PUBLIC FOR USE, AS SUCH; THAT THE OWNERS OF THE PROPERTY DO HEREBY DEDICATE UTILITY AND DRAINAGE EASEMENTS AS SHOWN, FOR R.R. 2 LTD.; A LIMITED PARTNERSHIP

Al Galubiec Edwin Duncan  
AL GALUBIEC EDWIN DUNCAN  
GENERAL PARTNERS

STATE OF NEW MEXICO, } ss.  
COUNTY OF SANTA FE, }

THE FOREGOING INSTRUMENT WAS ACKNOWLEDGED BEFORE ME THIS 20 DAY OF October 1977 BY EDWIN DUNCAN AND AL GALUBIEC.

Edward C. Delgado April 3, 1979  
NOTARY PUBLIC MY COMMISSION EXPIRES

### APPROVALS: CITY OF SANTA FE, NEW MEXICO

APPROVED ON 12 November 1977 BY Michael J. Smith  
CITY PLANNER

APPROVED ON 17 November 1977 BY John J. Smith  
CITY ENGINEER

APPROVED BY THE CITY PLANNING COMMISSION AT ITS MEETING OF October 6 1977.

John J. Smith Chairman  
SECRETARY

ACCEPTED BY THE CITY COUNCIL, CITY OF SANTA FE, AT ITS MEETING OF November 9 1977.

John J. Smith Mayor  
CITY CLERK

STATE OF NEW MEXICO, } ss.  
COUNTY OF SANTA FE, }

THIS PROPOSED SUBDIVISION LIES WITHIN THE PLANNING AND PLATTING JURISDICTION OF THE CITY OF SANTA FE.

Edwin B. Duncan

SUBSCRIBED AND SWORN TO BEFORE ME THIS 16 DAY OF November 1977.

Will D. Tencer May 20, 1980  
NOTARY PUBLIC MY COMMISSION EXPIRES

### CERTIFICATE

I HEREBY CERTIFY THAT THIS PLAT IS AN ACCURATE DELINEATION OF OFFICE COMPUTATIONS BASED ON ACTUAL FIELD SURVEYS COMPLETED ON Oct 20 1977. ALL LOT CORNERS, POINTS OF CURVATURE AND OTHER MONUMENTS SHALL BE SET WITHIN 90 DAYS AFTER COMPLETION OF THE REQUIRED IMPROVEMENTS.

Joseph L. Pacheco  
JOSEPH L. PACHECO, L.E. AND L.S. # 3905

### UTILITY EASEMENT

UNDERGROUND UTILITY EASEMENTS ARE HEREBY GRANTED AS SHOWN AND THROUGH THE STREET. SERVICE ENTRANCE AND EXIT EASEMENT TO EACH TRACT FOR UNDERGROUND UTILITIES ARE GRANTED BUT ARE CONFINED TO THE TRACT TO WHICH THE SERVICE IS PROVIDED.

WATER: Frank J. Pugh 10-27-77 POWER: James S. Hall 2-3-77  
PUBLIC SERVICE COMPANY OF NEW MEXICO

MOUNTAIN BELL James S. Hall DATE: 10-27-77  
GAS COMPANY OF NEW MEXICO DATE: 10-27-77

### NOTES

ONE HALF INCH (1/2") STEEL PINS SHALL BE SET AT ALL LOT CORNERS AND HALF INCH (1/2") STEEL PINS SET IN 4"x4" CONCRETE MONUMENTS SHALL BE PLACED IN ACCORDANCE WITH CITY ORDINANCE REQUIREMENTS AND/OR INSTRUCTIONS OF THE CITY ENGINEER.

PUBLIC SERVICE CO. EXISTING 5' UTILITY EASEMENT AS RECORDED ON BOOK 144 MISC. - PAGE 50, WILL BE VACATED AT SUCH TIME AS THE POWER LINE IS RELOCATED AND PRIOR TO ANY BUILDING ON THE AFFECTED LOTS.

PUBLIC SERVICE CO. EXISTING 20' UTILITY EASEMENT AS RECORDED ON BOOK 202 MISC. - PAGE 540, WILL BE VACATED AT SUCH TIME AS THE 45' POWER LINE IS RELOCATED.

### AMENDED CERTIFICATE

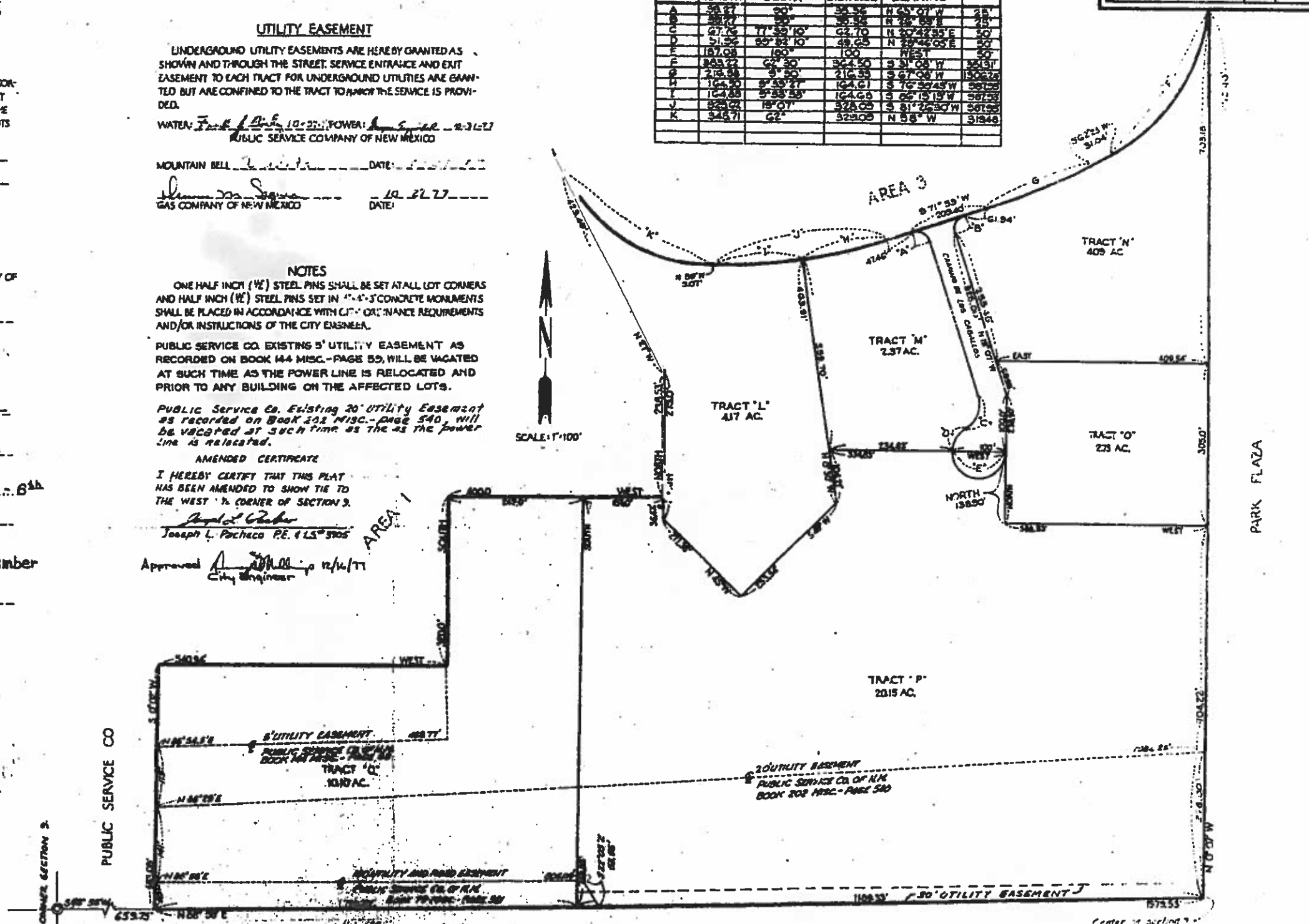
I HEREBY CERTIFY THAT THIS PLAT HAS BEEN AMENDED TO SHOW THE TO THE WEST 1/4 CORNER OF SECTION 2.

Joseph L. Pacheco P.E. # 158905

Approved Joseph L. Pacheco 12/4/77  
City Engineer

CURVE DATA					
CURVE	CURVE		CHORD		PADRES
	LENGTH	DELTA	DISTANCE	BEARING	
A	58.27	90°	84.34	N 65° 07' W	28
B	58.27	90°	84.34	N 25° 07' E	28
C	27.76	77° 35' 10"	42.70	N 20° 42' 32" E	50
D	51.55	89° 22' 10"	48.65	N 29° 46' 05" E	50
E	187.08	180°	100	WEST	50
F	843.22	62° 30'	302.50	S 31° 08' W	35131
G	216.58	9° 30'	216.58	S 67° 08' W	150226
H	104.61	8° 35' 27"	104.61	S 70° 30' 45" W	50123
I	104.61	8° 35' 27"	104.61	S 65° 15' 19" W	50123
J	823.02	18° 07'	328.05	S 81° 26' 30" W	50123
K	346.71	62°	523.05	N 58° W	31948

PUEBLOS DE RODEO ROAD		PERMIT	TOTAL
		1	1



PUEBLOS DE RODEO ROAD  
AREA 4