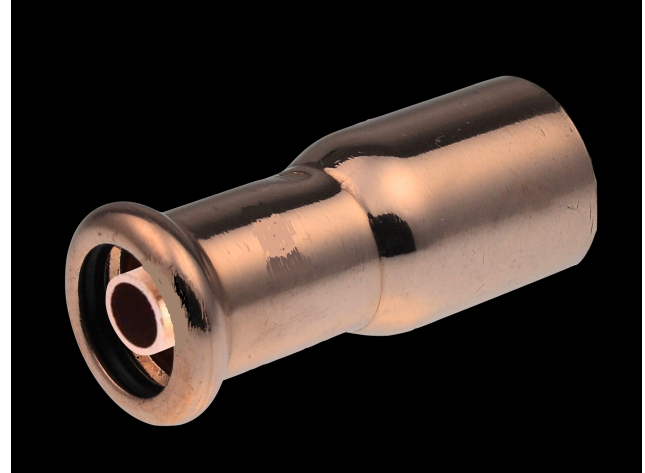


Eco-Duo - Coupler Street Reducer Data Sheet 2

Coupler Street Reducer

Eco-Duo Coupler Street Reducer 66.7mm x 28mm	W1559 CP
Eco-Duo Coupler Street Reducer 66.7mm x 35mm	W1560 CP
Eco-Duo Coupler Street Reducer 66.7mm x 42mm	W1561CP
Eco-Duo Coupler Street Reducer 66.7mm x 54mm	W1562 CP
Eco-Duo Coupler Street Reducer 76.1mm x 35mm	W1563 CP
Eco-Duo Coupler Street Reducer 76.1mm x 42mm	W1564 CP
Eco-Duo Coupler Street Reducer 76.1mm x 54mm	W1565 CP
Eco-Duo Coupler Street Reducer 76.1mm x 66.77mm	W1566 CP

(See Data Sheet 1 for smaller sizes)



Finishing Options:

Copper CP

Material Type

Main Body : COPPER
Separators: 316 STAINLESS STEEL

Weight

Eco-Duo Coupler Street Reducer 66.7mm x 28mm - 0.97 KG
Eco-Duo Coupler Street Reducer 66.7mm x 35mm - 0.97 KG
Eco-Duo Coupler Street Reducer 66.7mm x 42mm - 0.97 KG
Eco-Duo Coupler Street Reducer 66.7mm x 54mm- 0.99 KG
Eco-Duo Coupler Street Reducer 76.1mm x 35mm - 1.07 KG
Eco-Duo Coupler Street Reducer 76.1mm x 42mm -1.07 KG
Eco-Duo Coupler Street Reducer 76.1mm x 54mm- 1.08 KG
Eco-Duo Coupler Street Reducer 76.1mm x 66.7mm - 1.16KG

Max Pressure Details

16 Bar

Designer : Maxwell Bridges

Features and Benefits

- Patented Pipe-in-a-pipe technology
- Saves 50% energy costs (tested by BRE)
- Maintains temperatures across the whole building.
- Halves installation time and costs
- 50% reduction in pipe fixings and insulation
- No special installation required
- Pipework can be cut as normal
- Helps to reduce the risk of Legionella and other water borne pathogens
- Can be used on hot and cold potable water systems

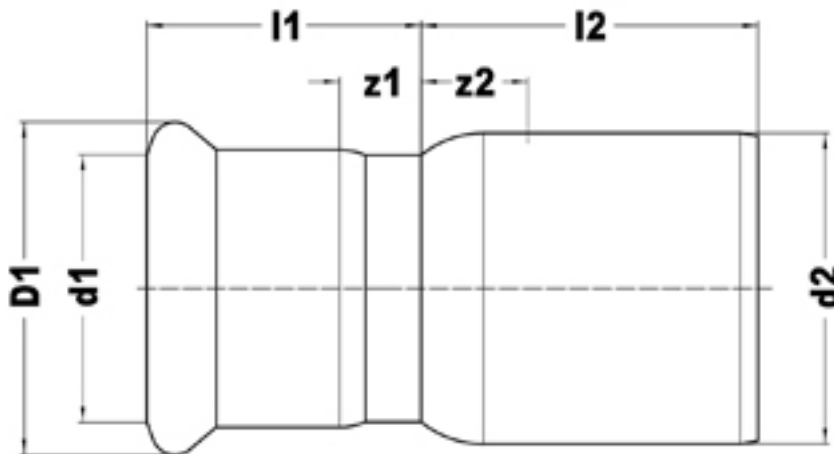
Notes:

- Only for use with potable water (not closed heating systems)
- Only for use with pumped recirculated water



Dimensions

SKU	Description	l1	d1	D1	es1	z1	l2	d2	D2	es2	z2	DN1	DN2
W1559 CP	66.7 x 28mm	37	28	37	23	14	72	67	-	50	22	DN25	DN65
W1560 CP	66.7 x 35mm	40	35	44	26	14	69	67	-	50	19	DN32	DN65
W1561 CP	66.7 x 42mm	37	42	53	30	7	75	67	-	50	25	DN40	DN65
W1562 CP	66.7 x 54mm	39	54	65	35	4	64	67	-	50	13	DN50	DN65
W1563 CP	76.1 x 35mm	39	35	44	26	13	74	76	-	50	24	DN32	DN65
W1564 CP	76.1 x 42mm	43	42	53	30	13	70	76	-	50	20	DN40	DN65
W1565 CP	76.1 x 54mm	42	54	65	35	7	75	76	-	50	15	DN50	DN65
W1566 CP	76.1 x 66.7mm	57	67	83	50	7	65	76	-	50	15	DN65	DN65



Water Kinetics Eco-Duo Guarantee - Terms and Conditions

Products are subject to a guarantee that is between Water Kinetics and the final purchaser of the product. When correctly assembled with the stated tubes and pipe the length of guarantee is as follows:

25 Years

The Eco-Duo Copper and Stainless ranges are guaranteed for 25 years when installed along with Eco-Duo fittings and components.

The guarantee is subject to proof of purchase being supplied.

This guarantee does not affect any statutory rights the consumer may have in law.

The guarantee covers manufacturing or material defects when installed in accordance with our instructions on specified tube materials and applications, and does not cover parts subject to normal wear and tear.

This product range has been designed for the use of domestic and commercial applications and therefore the Guarantee is subject to the product being properly selected for their intended service conditions.

The guarantee is not applicable where the product is fitted contrary to the conditions in the fitting instructions.

Provided Eco-Duo is installed correctly and receives adequate preventative maintenance it should give years of trouble-free service.

Abusive behaviour and accidental damage to the product are not covered by this guarantee. The extent of this liability is limited to the cost of the replacement of the defective item and not to installation or consequential damages.

Eco-Duo is a trademark of Water Kinetics Ltd

Water Kinetics Ltd makes every effort to ensure that the information provided on its website is accurate. However we cannot guarantee this, and accept no liability for any information or advice given via its website.

* All Weights are accurate to +/- 0.01KG

