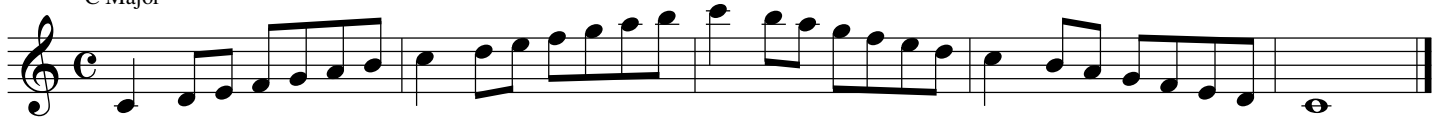


Clarinet Scales

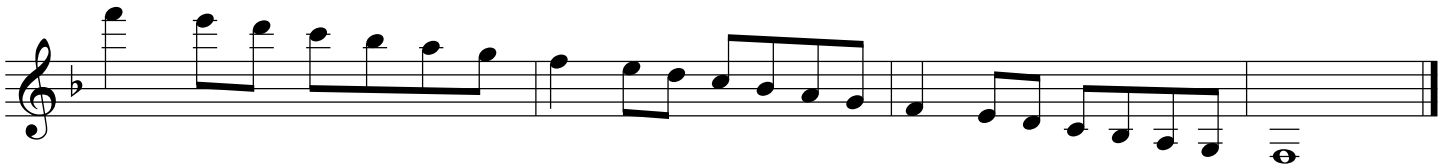
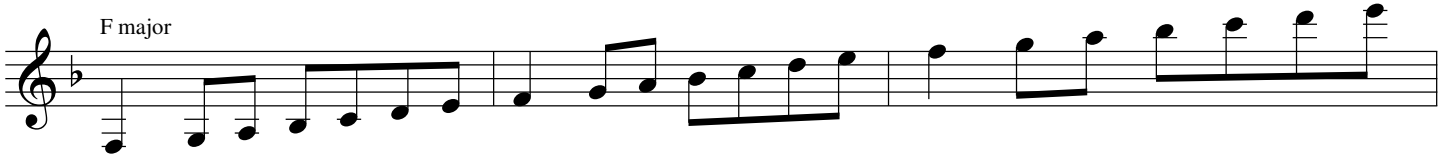
C Major



A minor



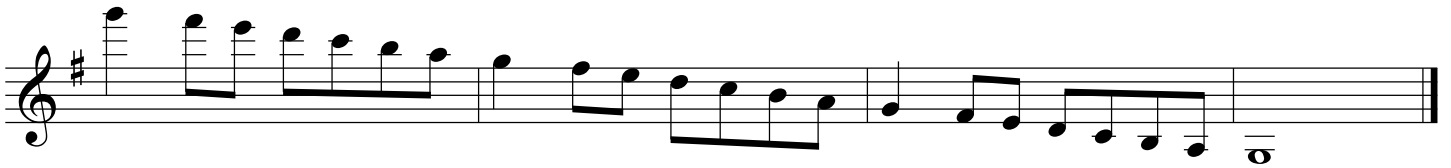
F major



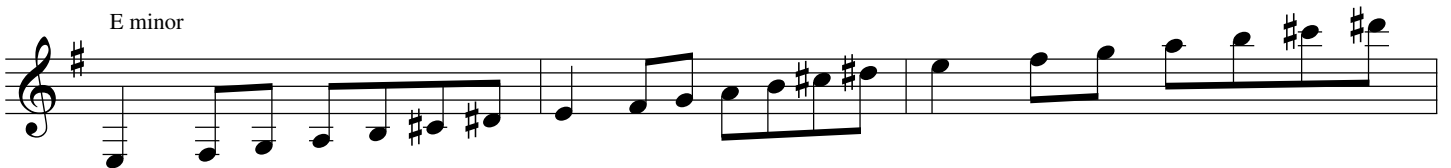
D minor



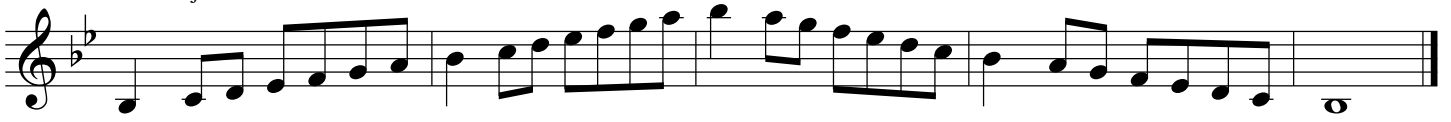
G major



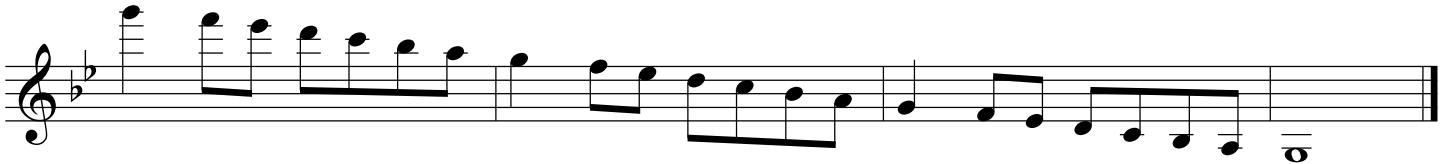
E minor



Bb Major



G minor



D major



B minor



Eb major



C minor



A major



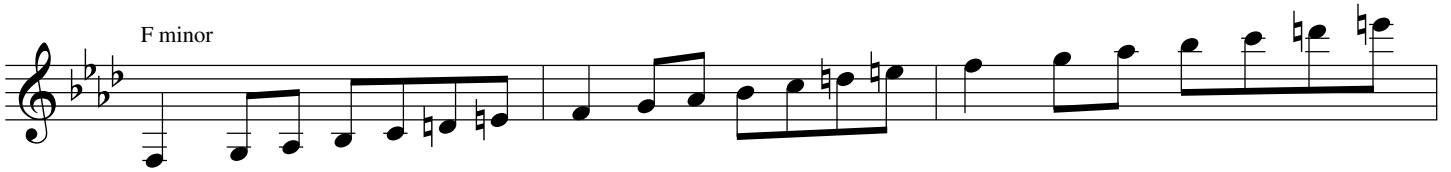
F# minor



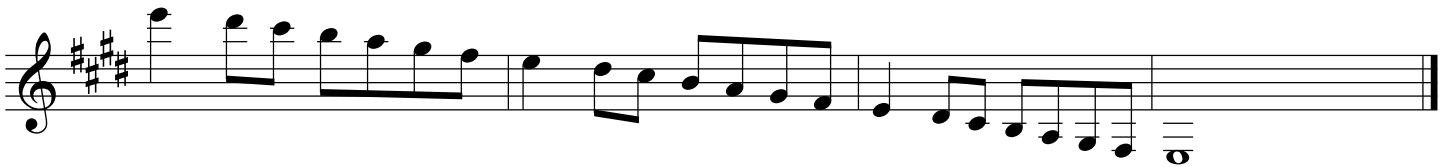
Ab major



F minor



E major



C# Minor



Db Major



Bb Minor



B Major



G# Minor

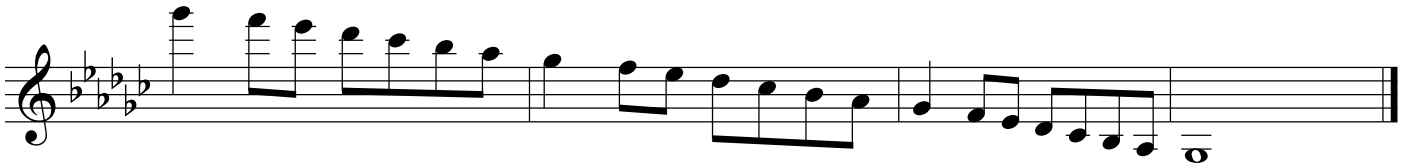


A single musical staff in G# minor, starting with a treble clef and a key signature of three sharps (F#, C#, G#). The melody consists of eighth and quarter notes, with some notes marked with an 'x'.

Gb Major



A single musical staff in Gb major, starting with a treble clef and a key signature of three flats (Bb, Eb, Ab). The melody consists of eighth and quarter notes.



A second musical staff in Gb major, continuing the melody from the first staff. It features eighth and quarter notes.

Eb Minor

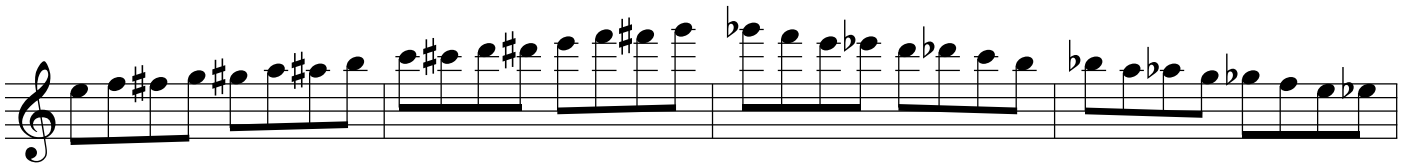


A single musical staff in Eb minor, starting with a treble clef and a key signature of three flats (Bb, Eb, Ab). The melody consists of eighth and quarter notes.

Chromatic



A single musical staff for a chromatic exercise, starting with a treble clef. The key signature is not explicitly shown but the notes are chromatic.



A second musical staff for a chromatic exercise, continuing the chromatic scale with various accidentals.



A third musical staff for a chromatic exercise, continuing the chromatic scale with various accidentals.