



# Bell Witch and the Spirit Seekers

a supernatural thriller by  
rené ashton and curry walls

based on a true experience



**IN 1969, A GROUP OF COLLEGE STUDENTS ACCIDENTALLY UNLEASH AN EVIL SPIRIT TIED TO THE LEGENDARY BELL WITCH. THEY MUST FIND A WAY TO SEND IT BACK BEFORE IT POSSESSES ONE OF THEM FOREVER.**





**NOT ONLY IS THE BELL WITCH  
THE MOST DOCUMENTED  
PARANORMAL EVENT IN US HISTORY,  
IT IS ALSO THE ONLY TIME A DEATH HAS  
BEEN OFFICIALLY ATTRIBUTED TO A  
SUPERNATURAL ENTITY.**

**THE SITE OF THE HAUNTING ON THE  
BELL FARM IS ALSO CONSIDERED TO BE  
ONE OF THE MOST HAUNTED PLACES IN  
AMERICA, EVEN TODAY.**



# THE CAST

to be played by actors like...



ELLE FANNING, MALEFICIENT



TANNER BUCHANAN, "COBRA KAI"

## MARY ADAMS

20's. Mary, is a people pleaser and peacemaker who radiates warmth and positivity. Once the unthinkable happens, the same eyes that once sought approval begin to burn with determination. Mary has to become a fighter for her survival, for her right to take up space, to speak up, and to live on her own terms. She dates Tiller.

## TILLER

20's. Tiller's a jock from West Virginia at college on a football scholarship. A natural leader of every pack. He has strong beliefs about right and wrong and what is important to him. He tends to pick friends who are a bit quirky. He's fiercely loyal to his friends and girlfriend, Mary.



## ● PAUL

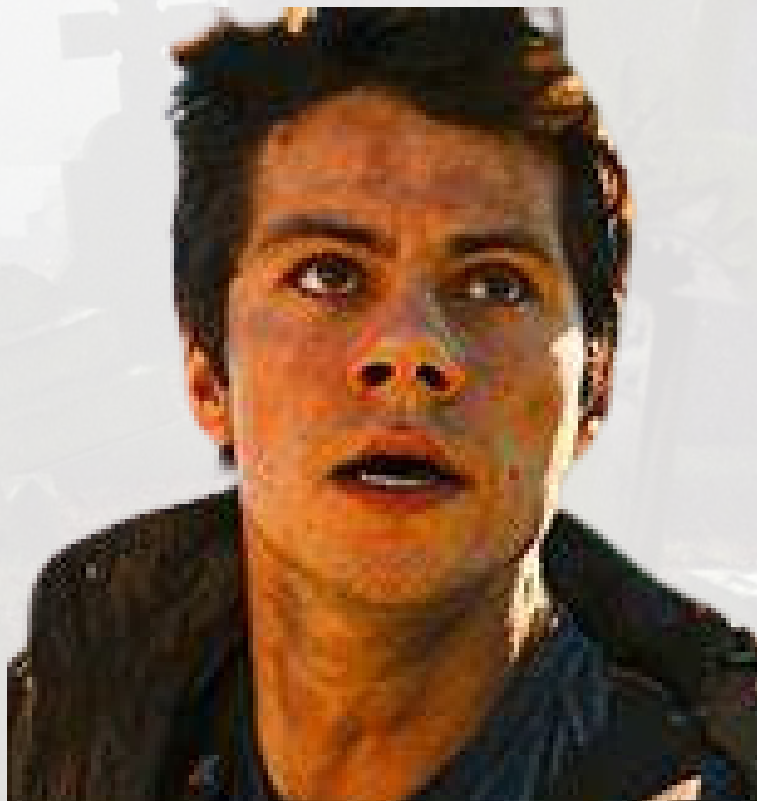
20's, is a sharp-tongued, street-smart guy with a thick Brooklyn accent. He's bold, brash, and unapologetic. He starts pulling pranks during the séance, faking supernatural signs, getting a rise out of his friends, and enjoying the power he feels when they fall for his tricks. But what starts as a joke turns serious, and Paul finds himself questioning if he's in over his head. As the eerie events spiral out of his control, Paul's bravado begins to crack.

## ● VERA

20's. Vera, from Holland. Her reclusive nature is not born of shyness, but of necessity. She doesn't avoid people because she dislikes them, but because she knows too much about them. Her visions come without warning, like flashes of lightning behind her eyes, showing her glimpses of people's darkest secrets or their impending doom. These visions are a burden she carries in silence, making her wary of connecting with others.

---

DYLAN O'BRIEN, TEEN WOLF



FLORENCE PUGH, OPPENHEIMER





## DARRELL

20's. Darrell, a reserved, stoned, hippy, grew up on a farm in town. He's been in a steady, comfortable relationship with Cathy, his high school sweetheart, for years. Darrell handles fear by maintaining a calm and collected exterior, even when he's rattled inside. His upbringing on the farm taught him resilience and practicality, making him slow to panic and more likely to focus on finding solutions.

## CATHY

20's. Mary's best friend and confidant since grade school, Cathy is confident and assertive. While Cathy relies on her boyfriend, Darrell, for support in many ways, her independent streak makes her the one in charge. Cathy joins the group for the thrill of the adventure and because she can't stand being apart from Darrell, even for one night. As the night progresses, Cathy's strength turns into fear.



NOAH BECK, 33M TIK TOK FOLLOWERS



KELSEY HEALY, THE SUMMER I TURNED PRETTY



## ● **BARNEY**

20's. Barney presents with an awkward, uncoordinated gait that adds to his feeling of always being out of place. His posture is slightly hunched. His large, round glasses tend to slip down his nose, and he frequently pushes them up with a nervous twitch. His eyes dart around, never quite making full contact in conversation, giving the impression he's always anticipating something bad to happen.

## ● **THE CARETAKER**

The Caretaker rules over the Bell property like a shadowy tyrant, his presence as heavy and unyielding as the land itself. His eyes glint with a cold, calculating malice—always watching, always assessing, like a predator sizing up its prey. He looms large, his frame intimidating and his movements deliberate, cloaked in an air of menace. His every motion is steeped in an unsettling calm, the kind that only comes from a man who's done far worse than you can imagine—and is more than willing to do it again.

---

**NOLAN GOULD, MODERN FAMILY**



**BILLY RAY CYRUS**



## **KATE BATTS (V.O.)**

**VOICED BY SOMEONE LIKE KATHY BATES**

Kate, a vengeful and malevolent force, was more than just a neighbor to the Bell family. She was a harbinger of their torment. In life, during the 1800s, Kate Batts quarreled bitterly with John Bell over land, a dispute that festered into unrelenting hatred. As whispers of her eccentricity spread, so did rumors of her dark intentions. Before her death, Kate vowed to bring ruin upon John and his family, promising that no peace would ever find their home.

True to her ominous word, Kate's spirit returned, her wrath transcending death itself. The entity tormented the family with whispers, physical attacks, and eerie manifestations, ensuring that her revenge would be etched into their lives as a legacy of fear.





# THE TEAM

---

## ● **RENE ASHTON, DIRECTOR / CO-WRITER / PRODUCER**

René Ashton is a multi-talented, award-winning actor, writer, producer, and director whose passion for storytelling has shaped a diverse career across multiple platforms. Her acting career spans over 100 commercials and over 100 television shows and films.



René has produced and written three award-winning television pilots/short films and transitioned into directing her own material. Her horror short film, THE CANDLE, has been a festival favorite, winning 18 awards in 9 countries and earning her three Best Director accolades. She just completed writing the full-length feature script.

Committed to fostering opportunities for women in the industry, René co-founded an initiative that connects award-winning female writer/directors/producers. The inaugural event at Raleigh Studios attracted studio executives, literary agents, and production companies, underscoring René's dedication to uplifting women in entertainment.

## ● **CURRY WALLS, CO-WRITER / PRODUCER**

William Curry Walls is the writer and creative driving force behind 5th Avenue Films. Curry's mission with 5th Avenue Films is to capture exciting stories that drive emotion. With ten original screen plays ready for production, Curry's focus has always been on personally relatable ideas with an original spin. Several of his scripts are based on true events. For example, RUBY'S HOUSE, a three season, 36-episode historical drama series about Curry's immigrant grandparents who had a dream to live free in America while fending off the KKK. Another example is this script, BELL WITCH AND THE SPIRIT SEEKERS based on his true experience at the Bell family graveyard.



An industry vet, Curry found himself in LA in the 70s and has done everything music, film, and in between. Curry learned the art and craft of film at 20th Century Fox working with Herbert Ross and Rick McCallum. Then, as president of Ingels Inc., he developed endorsements for Glenn Ford, Redd Fox, Dick van Dyke, and other celebrities. Heading Abrams Rubaloff and Lawrence's Celebrity Division, Curry pioneered the celebrity infomercial format with Robert Vaughn, George Hamilton, and Robin Leach while representing Leslie Nielsen, Hank Williams Jr., Leah Remini, Steven Seagal, and others.

From 1990, his own agency represented actors and screenwriters, continued representing Leslie Nielsen, and brokered deals for Raquel Welch, Barbara Eden, and Faye Dunaway, among other celebrities.



## ● **BILL KELMAN / PRODUCER**

Bill Kelman is an experienced filmmaker, writer, producer, and director as well as a film executive in distribution, acquisitions, and development who has sold film projects as a writer and producer to various studios; including Warner Brothers, Paramount, New World, German companies Pro-Sieben and RTL, and other indie production companies. He has worked with Forlan on their projects for nearly ten years. His cult film, “Mortuary Academy” starred Paul Bartel and Mary Woronov for RCA/Columbia. He has the dubious recognition of having three films in the “Psychotronic Video Guide”. Bill produced on Pulse for BET+.



Additionally, Kelman is a skilled production manager, line producer, location manager, and fixer including major brands and reality shows as well as a creative and production consultant on Manahi, an Arabic language feature film shot in Egypt and Dubai.

Most recently he is a producer on The Price We Pay with Emile Hirsch and Stephen Dorff directed by Ryuhei Kitamura, the sci-fi TV series Pulse, and the unscripted pilot for the Deep 6.

Bill is a 399 Teamster, IATSE, and WGA member. He was at the American Film Institute on a screenwriting fellowship and has a BA from the University of Wisconsin. He currently lives and works from Albuquerque, New Mexico, and consciously tries to limit his visits to Los Angeles.



## ● **RICKI MASLAR, CASTING DIRECTOR**

Ricki Maslar, CSA is a successful casting director and producer with over thirty five years' experience in the entertainment industry. She has held a variety of positions as an agent, casting director, manager, teacher, and producer. As a casting director Maslar has had the opportunity to work on studio and independent features with credits that include SARAH'S OIL, SOMEWHERE IN MONTANA, DON'T TELL LARRY, A GOOD NEIGHBOR, A CHRISTMAS...PRESENT, A THOUSAND

TOMORROWS, SOMEONE LIKE YOU, THE LINE and DAHMER as well as over 300 other titles. Her actor-friendly philosophy has earned her high praise from actors and colleagues alike, yet Maslar says she is simply living and working by the 'golden rule.'

Maslar was born in Chicago and grew up in Oklahoma City. She resided in Los Angeles for over 35 years before moving back to Oklahoma in 2017. She has been honored by the TMA four times being nominated for the Feature Film Casting Director of the Year. She was inducted into the Movie Hall of Fame in Oklahoma in 2022.

She was privileged to work with a film maker who bravely started production DURING the pandemic. Danny Roth showed the industry a safe way to work during the historic shut down of the industry... showing, once again, how strong the entertainment industry can be.

Ricki G. Maslar is a respected entertainment executive, a member of CSA (Casting Society Of America), and a member of the P.G.A. (The Producers Guild of America), dedicated mother, and she looks forward to making films that change lives and make a difference in the world.

---



# ANCILLARY REVENUE

THE **MAKING OF DOCUMENTARY** ALLOWS FANS TO ENGAGE WITH BEHIND-THE-SCENES FOOTAGE, FROM CAST AND CREW INTERVIEWS TO INSIGHTS INTO THE FILM'S PRODUCTION PROCESS.



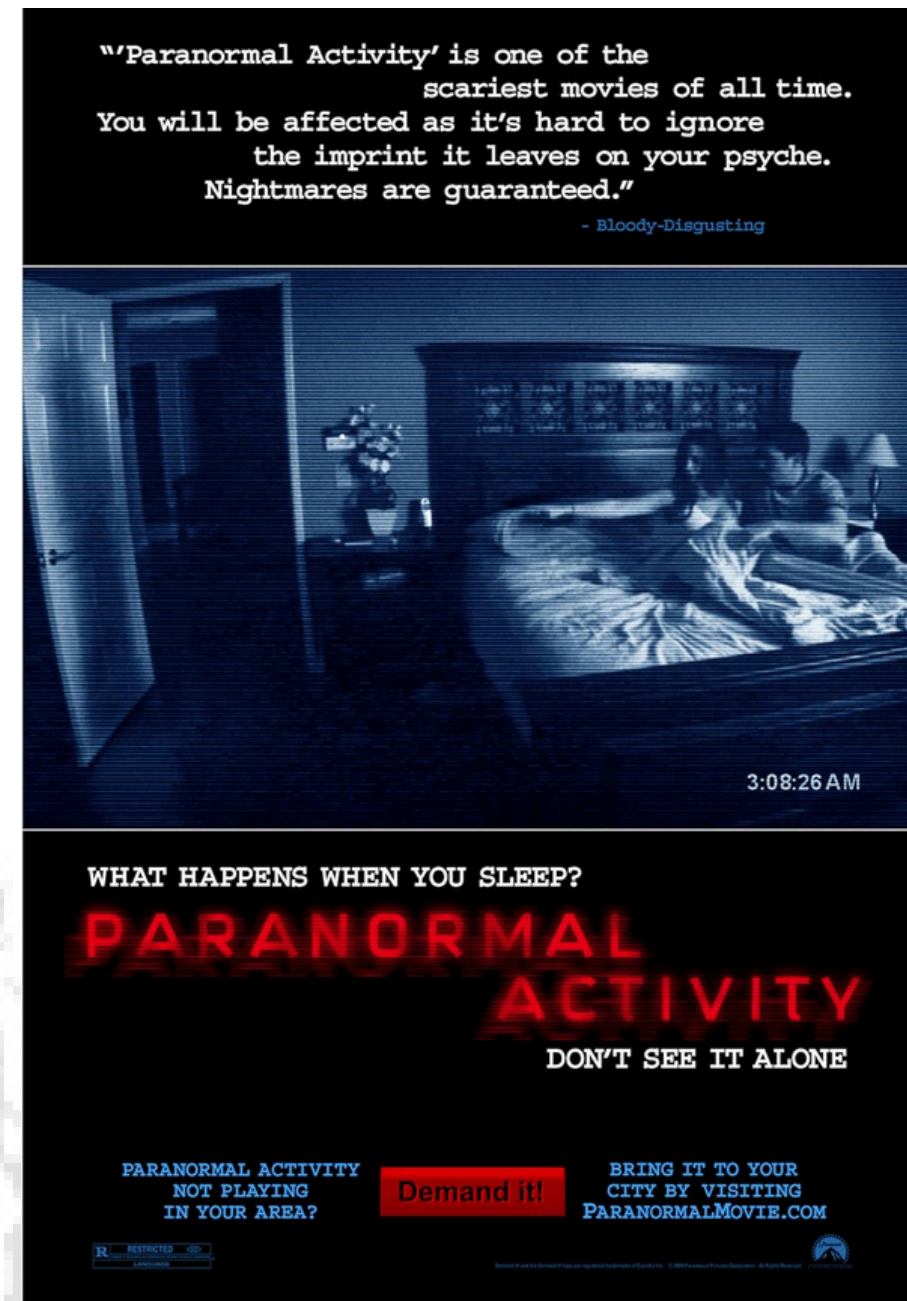
# ANCILLARY REVENUE

CONSUMERS SPENT A TOTAL OF **\$4.1 BILLION ON HALLOWEEN COSUTMES BASED ON HORROR MOVIE CHARACTERS IN 2023** AS REPORTED BY THE NATIONAL RETAIL FEDERATION.

THE **CARETAKER HALLOWEEN COSTUME** WILL BE A GROTESQUE, HIGHLY DETAILED MASK WITH A WEATHERED, LEATHERY FACE WITH DEEP WRINKLES, PATCHY STUBBLE, AND A PERMANENT SCOWL. THE LEFT EYEBALL DANGLES EERILY FROM ITS SOCKET, CONNECTED BY A SINEWY "CORD" MADE OF SILICONE OR LATEX, GIVING IT A REALISTIC AND UNSETTLING LOOK.



# COMPARABLES



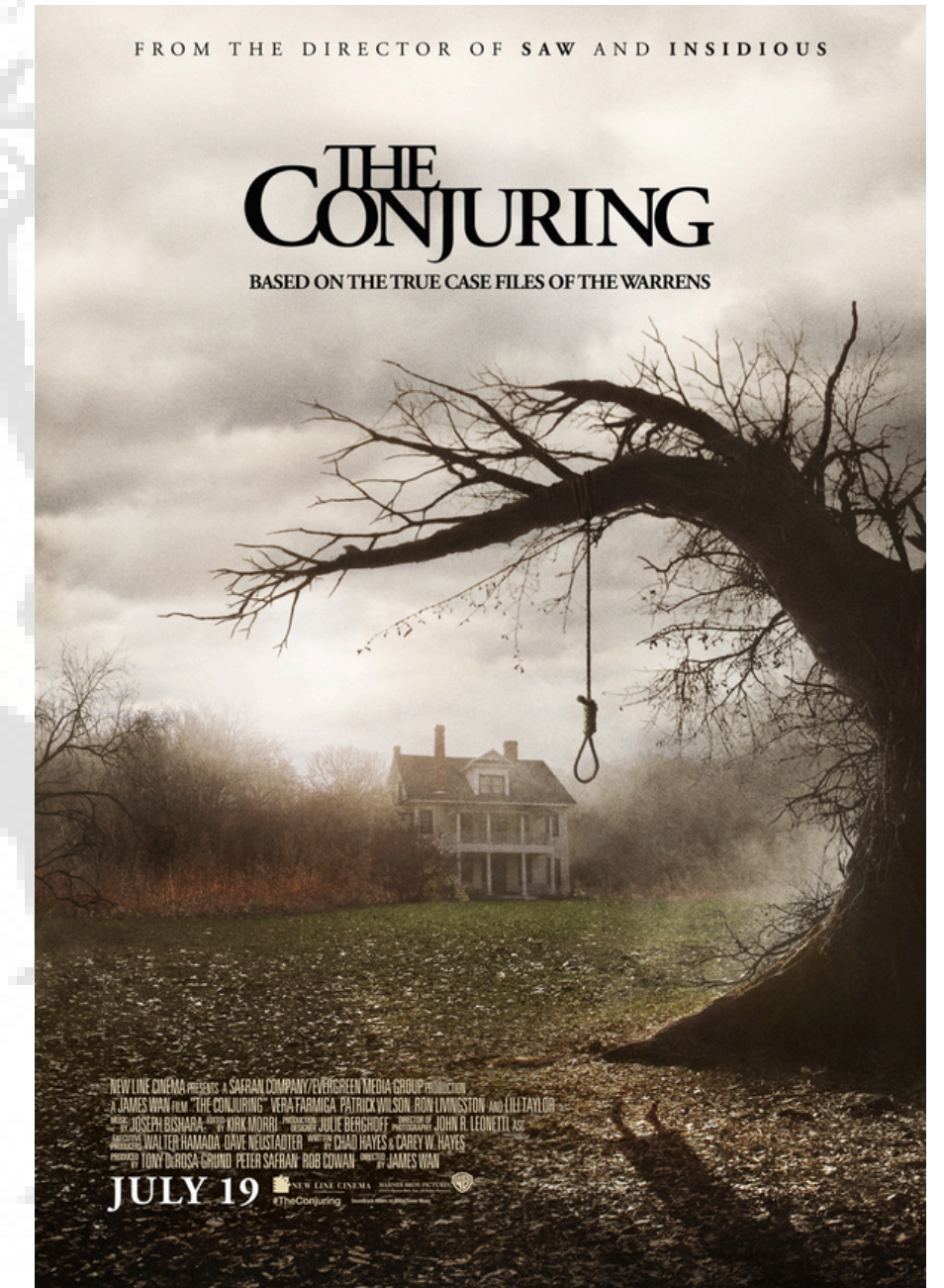
## PARANORMAL ACTIVITY

Budget \$15,000  
Gross \$193.4 M



## TAROT

Budget \$8 M  
Gross \$48.1 M

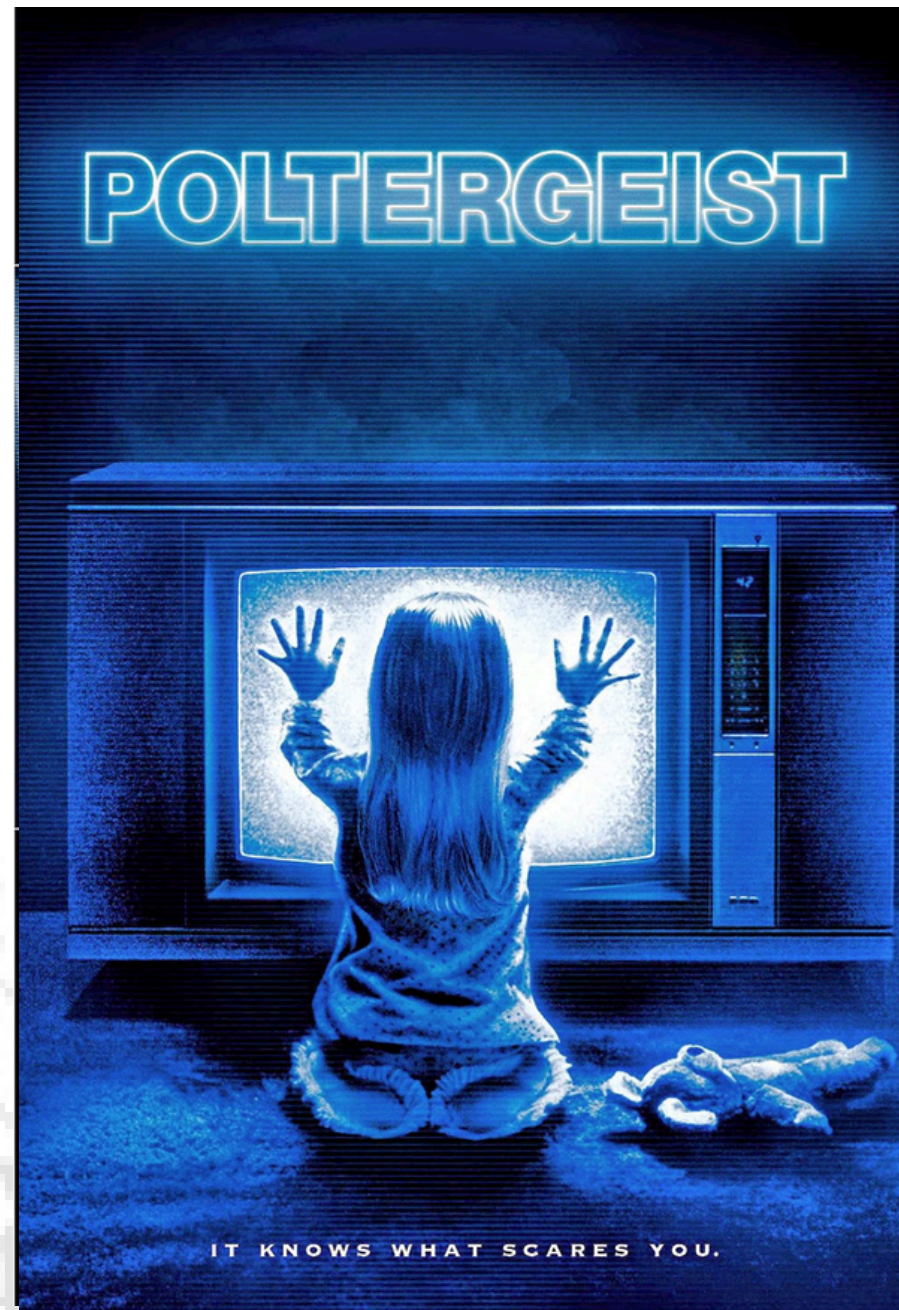


## THE CONJURING

Budget \$20 M  
Gross \$319 M



# COMPARABLES



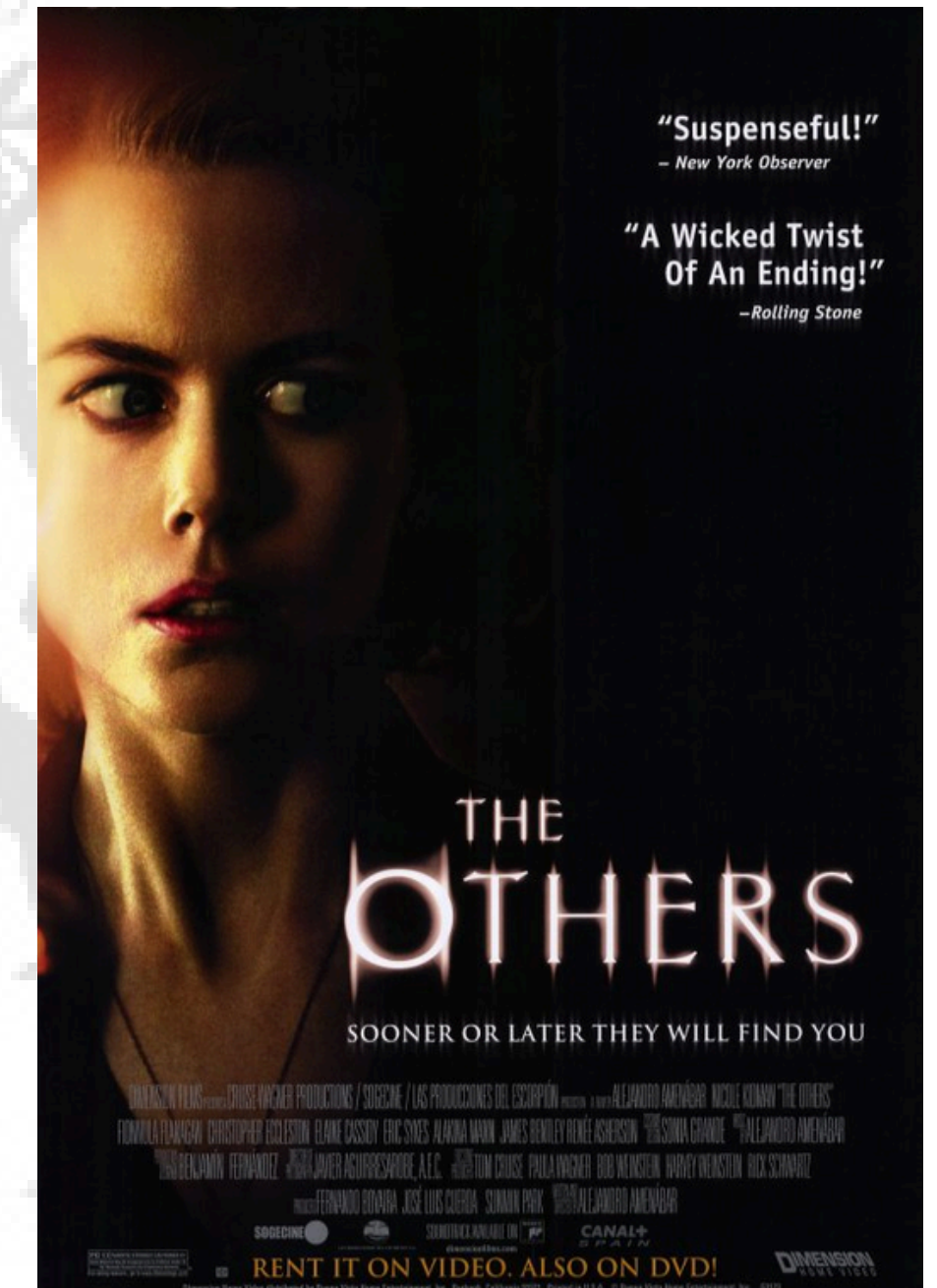
**POLTERGEIST**

Box Office  
\$121.7 M



**THE BLAIR WITCH**

Box Office  
\$248.6 M



**THE OTHERS**

Box Office  
\$209.9 M

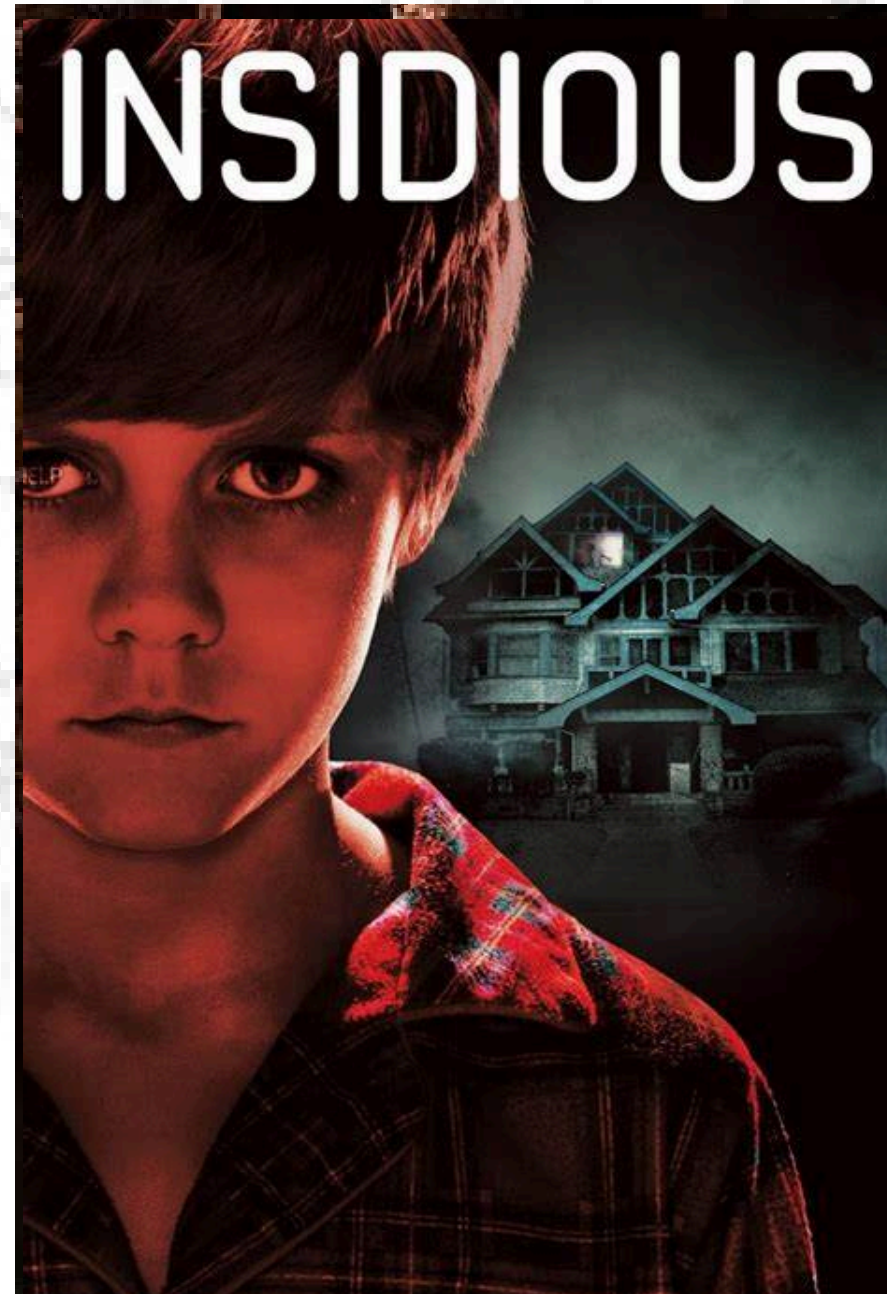


# COMPARABLES



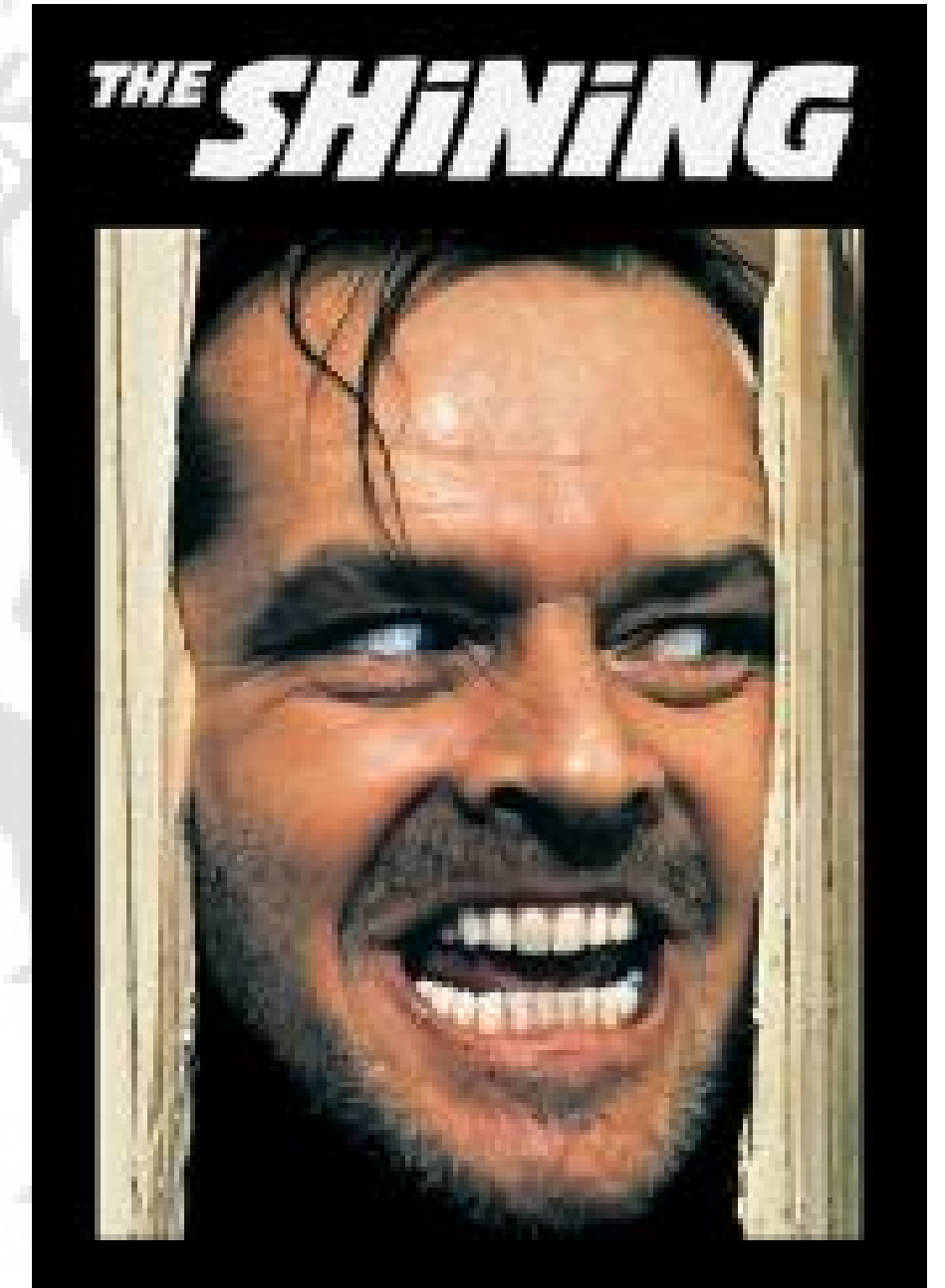
**STIR OF ECHOS**

Box Office  
\$24.4 M



**INSIDIOUS**

Box Office  
\$99.5 M



**THE SHINING**

Box Office  
\$47.96 M



# CONTACT



**CURRY WALLS**

**310-880-8760**

**CURRY@5THAVENUEFILMS.COM**

