



BOLAND EQUIPMENT RENTALS

282 Hudson Street
Hackensack, NJ 07601
Office: 201-342-8020

ABOUT US

Boland Equipment Rentals is a second generation, family-owned company who prioritizes exceptional customer service as the cornerstone of our business.

B.E.R. LLC. provides flexible rental options for both short and long-term needs, with or without operators. Our diverse fleet includes Under bridge Trucks, Hi-Rail Trucks certified for railroad use, Bucket Trucks, Telehandlers, Aerial Work Platforms and more. We carry Attenuator or "shadow" trucks to maintain highway safety as well as other specialized equipment. Let us handle all your project equipment requirements and ensure seamless coordination for your needs.




TABLE OF CONTENTS

Scissor lift	4-14
Mast lift	15-16
Boom lift	17-28
Telehandler	29-32
Bucket Trucks	33-38
Under bridge Trucks	39
Lane Closures and Highway Protection	40-42

SNORKEL ELECTRIC SCISSOR LIFT

S1932E

DIMENSIONS	S3215E	S3219E
Max. working height	21 ft	25 ft
Max. platform height (A)	15 ft	19 ft
Platform size (stowed)	28.25 in x 63.75 in	28.25 in x 63.75 in
Platform size (extended)	28.25 in x 99.75 in	28.25 in x 99.75 in
Deck extension length	36 in	36 in
Overall length (C) (with step)	70.4 in	70.4 in
Overall length (C) (with step removed)	68.3 in	68.3 in
Overall width (D)	32 in	32 in
Stowed height (B)	79 in	83 in
Min. height (guardrails folded)	62.6 in	65 in
Ground clearance (stowed)	2.63 in	2.63 in
Ground clearance (elevated)	0.75 in	0.75 in
PERFORMANCE		
Platform capacity (SWL)	600 lbs	550 lbs
Max. wind speed	28 mph	28 mph
Max. drive height	15 ft	19 ft
Max. drive speed (stowed)	2.0 mph	2.0 mph
Max. drive speed (elevated)	0.4 mph	0.4 mph
Raise/lower time	20/36 sec	20/36 sec
Gradeability	25%	25%
Inside turning radius	4 in	4 in
Outside turning radius	64.25 in	64.25 in
Tires	12 x 4 non-marking rubber	
Controls	proportional	
Drive system	2-wheel drive	
POWER		
Power source	24V DC battery electric	
Charger	90 - 240V, 25amp	
WEIGHT		
Weight	2,700 lbs	3,170 lbs



JCB ELECTRIC SCISSOR

SI930E

DIMENSIONS – ELECTRIC SCISSORS		
Model		SI930E
A. Max. platform height	ft-in (m)	18-9 (5.7)
B. Extension outreach	in (m)	35 (0.9)
C. Overall length (stowed)	ft-in (m)	5-10 (1.78)
D. Overall width (stowed)	ft-in (m)	2-6 (0.76)
E. Overall height (stowed, guardrail folded)	ft-in (m)	6-11 (1.86)
F. Overall height (stowed, guardrail unfolded)	ft-in (m)	6-11 (2.12)
Overall weight	lb (kg)	3,739 (1,696)
Max. wheel loading	lb (kg)	1330 (603)
Ground Pressure per Tire	psi	164
KEY SPECIFICATIONS – ELECTRIC SCISSORS		
Model		SI930E
Platform size (L x W x H)	in	65 x 30 x 43
	m	1.64 x 0.76 x 1.1
Load capacity	lb (kg)	505 (230)
Max. platform occupants (outdoor)	person	1
Max. platform occupants (indoor)	person	2
Max. allowable side force (indoor)	lbf (N)	90 (400)
Max. allowable side force (outdoor)	lbf (N)	45 (200)
Max. allowable wind speed (outdoor)	m/s / mph	12.5 / 28
Max. allowable slope (front/back)	degrees	3
Max. allowable slope (side/side)	degrees	1.5
Ground clearance (stowed)	in (m)	2.75 (7)
Wheelbase	in (m)	52 (1.33)
Turning radius (outside)	ft-in (m)	4-11 (1.49)
Turning radius (inside)	in (m)	1.5 (0.04)
Gradeability	%	25
Max. driving speed (stowed)	mph (km/h)	1.7 (2.8)
Max. driving speed (raised)	mph (km/h)	0.5 (0.8)
Rising speed (loaded)	s	15~20
Lowering speed (loaded)	s	25~30
Solid tire dimensions	in (mm)	12 x 4.5 (305 x 115)
Hydraulic oil tank vol.	gal (L)	3.7 (14)
Hydraulic system tank vol.	gal (L)	4.75 (18)
Hydraulic system pressure	Mpa	24
Battery	Ah	6V x 4 (225)
Power unit	V DC (kW)	24 (3.3)
Input voltage of charger	V AC	100~240
Output voltage of charger	A	25
Drive and steer model		2, front-wheel
Brake		2, rear-wheel
Tires		Non-marking



SYKJACK ELECTRIC SCISSOR

SJ3226

Dimensions	SJIII 3220	SJIII 3226
A Work Height	26' (7.92 m)	32' (9.75 m)
B Raised Platform Height	20' (6.10 m)	26' (7.92 m)
C Lowered Platform Height	38" (0.97 m)	45" (1.14 m)
D Overall Width	32" (0.81 m)	32" (0.81 m)
E Overall Length	91.5" (2.32 m)	91.5" (2.32 m)
F Stowed Height (Rails Up)	77.5" (1.97 m)	84.7" (2.15 m)
G Stowed Height (Rails Down)	OPT 63.5" (1.61 m)	70.6" (1.79 m)
H Platform Width (Inside Dimension)	28" (0.71 m)	28" (0.71 m)
I Platform Length (Inside Dimension)	84" (2.13 m)	84" (2.13 m)
Specifications	SJIII 3220	SJIII 3226
Extension Deck (Roll Out)	3' (0.91 m)	3' (0.91 m)
Ground Clearance (Stowed)	3.5" (8.89 cm)	3.5" (8.89 cm)
Ground Clearance (Raised)	0.75" (1.90 cm)	0.75" (1.90 cm)
Wheelbase	69" (1.75 m)	69" (1.75 m)
Weight	3,510 lbs (1,592 kg)	4,135 lbs (1,876 kg)
Gradeability	30%	30%
Turning Radius (Inside)	50" (1.27 m)	50" (1.27 m)
Turning Radius (Outside)	108" (2.74 m)	108" (2.74 m)
Lift Time (With Rated Load)	33 sec	56 sec
Lower time (With Rated Load)	29 sec	42 sec
Drive Speed (Stowed)	2 mph (3.2 km/h)	2.4 mph (3.9 km/h)
Drive Speed (Raised)	0.7 mph (1.1 km/h)	0.7 mph (1.1 km/h)
Maximum Drive Height	Full Height	Full Height
Capacity (Overall)	900 lbs (408 kg)	500 lbs (227 kg)
Distributed Capacity (Main Platform)	600 lbs (273 kg)	250 lbs (113 kg)
Distributed Capacity (Extension Deck)	300 lbs (136 kg)	250 lbs (113 kg)
Local Floor Load (With Rated Load)	130 psi (897 kPa)	130 psi (897 kPa)
Overall Floor Load (With Rated Load)	245 psf (12 kPa)	235 psf (12 kPa)
Maximum # of Persons	2	2
Wind Rating	28 mph (12.5 m/s)	28 mph (12.5 m/s)
Tire Type	Solid, N/M	Solid, N/M
Tire Size	16 x 5 x 12	16 x 5 x 12



SNORKEL ELECTRIC SCISSOR LIFT

S3220E/S3226E

DIMENSIONS	S3220E	S3226E
Max. working height	26 ft	32 ft
Max. platform height (A)	20 ft	26 ft
Platform size (stowed)	28.25 in x 84.38 in	28.25 in x 84.38 in
Platform size (extended)	28.25 in x 102.38 in	28.25 in x 102.38 in
Deck extension length (B)	36 in	36 in
Overall length (D) (with step)	90.6 in	90.6 in
Overall length (D) (step removed)	88.75 in	88.75 in
Overall width (C)	32 in	32 in
Stowed height (E)	85.25 in	90.5 in
Min. height (guard rails folded)	67.75 in	73.13 in
Ground clearance (stowed)	3.75 in	3.75 in
Ground clearance (elevated)	0.75 in	0.75 in

PERFORMANCE		
Platform capacity	900 lbs	500 lbs
Max. wind speed	28 mph	28 mph
Max. drive height	20 ft	26 ft
Max. drive speed (stowed)	2.0 mph	2.0 mph
Max. drive speed (elevated)	0.4 mph	0.4 mph
Raise/lower time	34/43 sec	50/56 sec
Gradeability	25%	25%
Inside turning radius	30 in	30 in
Outside turning radius	93 in	93 in
Tires	15 x 4 non-marking rubber	
Controls	proportional	
Drive system	2 wheel drive	

POWER		
Power source	24V DC battery electric	
Charger	90-240V, 25amp	

WEIGHT		
Weight	4,500 lbs	4,900 lbs



MEC ELECTRIC SCISSOR LIFT

2032SEAC

Standard Features

Work Area

Dual Sheet Material Trays - 110 lbs. (50 kg) per Side
Roll Out Deck Extension with Incremental Locking Positions
Standard Full Height Swing Gate
Lanyard Attachments (2)

Performance

800 lbs. (363 kg) Capacity
AC Electric Drive
Fully Proportional Drive and Lift Controls
Up To 25% Gradeability

Power

210Ah Maintenance-Free Batteries
Battery Charge Indicator

Serviceability

Lubrication-Free Scissor Bearings
Easy Maintenance Access to Mechanical and Electrical Components in
Swing Out Trays
Parking Brake Release Switch for Towing

Safety

Lift Control Orientation Designed to Mitigate Entrapment
Dedicated Compartments Protect Electrical and Hydraulic Components
Emergency Shut-Off at Platform and Lower Controls
Non-Skid Metal Deck Construction
Descent Alarm
Drive Speed Interlock
Multi-Axis Tilt Sensor
Multiple Disk Brakes

Scissor Maintenance Lock
Automatic Parking Brakes
Automatic Pothole Protection

Other Features

Removable Upper Controls
Voltage-Compensating Fully
Automatic Battery Charger
Hour Meter
Machine Tie Downs
Non-Marking Tires
All-Motion Alarm
Fork Lift Pockets
Flashing Beacon
Leak Containment System* (LCS)

Optional Features

Upper Control Box Supplementary
Guard
900W Inverter
Tool Tray
Cold Weather Package
Pipe Rack
Second Year Extended Warranty

Micro 2032^{AC}

	U.S.	Metric
Heights		
Indoor Working Height*	25.7 ft.*	8 m*
Outdoor Working Height*	21 ft.*	6.6 m*
Indoor Platform Height	19.7 ft.	6 m
Outdoor Platform Height	15 ft.	4.6 m
Stowed Height (Top Guardrail)	78.7 in.	2 m
Stowed Height (Platform Floor)	35.4 in.	1.9 m
Guardrail Height	43.5 in.	1.1 m
Toeboard Height	6 in.	0.15 m
Ground Clearance (Stowed)	3 in.	7.62 cm
Dimensions		
Length-Stowed (Overall)	74 in.	1.88 m
Length-Stowed (Ladder Removed)	68 in.	1.73 m
Chassis Width	52.2 in.	.82 m
Platform Length (Extended)	103.5 in.	2.63 m
Platform Length (Retracted)	68 in.	1.73 m
Roll-Out Deck Length	35.5 in.	.9 m
Platform Width (Outside)	29.1 in.	.74 m
Wheelbase	55 in.	1.4 m
Total Lift Capacity	800 lbs.	363 kg
Personnel Capacity	2 (Indoors); 1 (Outdoors)	
Roll-Out Deck Capacity	250 lbs.	113 kg
Speed		
Raise/Lower Speed		25/20 sec
Drive Speed (Stowed)	3 mph	5 km/h
Drive Speed (Elevated)	.5 mph	.8 km/h
Performance		
Gradeability		25% 14 degrees
Turning Radius (Inside)	6 in.	15 cm
Weight**	3,640 lbs.	1650 kg
Power Source	210Ah Maintenance-Free Batteries	
Controls	Proportional	
Tires	12 in. x 5 in.	30 cm x 12.5 cm

*Metric equivalent of working height adds 2in to platform height. U.S. adds 6 in. to platform height.
**Weight may vary with certain options or configurations.

Important - MEC scissor lifts must be on a hard level surface while elevated.

Warranty - MEC Aerial Work Platforms carry a one (1) year warranty on defective component parts and a five (5) year warranty on defective structural parts. This warranty applies to the original owner only. Consult your MEC dealer for warranty details.

SNORKEL ELECTRIC SCISSOR LIFT

S4726E/S4732E

DIMENSIONS	S4726E	S4732E
Max. working height	32 ft	38 ft
Max. platform height (A)	26 ft	32 ft
Platform size (stowed)	43 in x 84.38 in	43 in x 84.38 in
Platform size (extended)	43 in x 132.38 in	43 in x 132.38 in
Deck extension length (B)	48 in	48 in
Overall length (D) (with step)	90.6 in	90.6 in
Overall length (D) (step removed)	89 in	89 in
Overall width (C)	47 in	47 in
Stowed height (E)	90.2 in	94.2 in
Min. height (guardrails folded)	73 in	76.88 in
Ground clearance (stowed)	2.63 in	2.63 in
Ground clearance (elevated)	0.75 in	0.75 in

PERFORMANCE

Platform capacity	1,000 lbs	700 lbs
Max. wind speed	28 mph	28 mph
Max. drive height	26 ft	32 ft
Max. drive speed (stowed)	2.0 mph	2.0 mph
Max. drive speed (elevated)	0.4 mph	0.4 mph
Raise/lower time	50/58 sec	50/58 sec
Gradeability	25%	25%
Inside turning radius	21 in	21 in
Outside turning radius	95 in	95 in
Tires	15in x 5in non-marking rubber	
Controls	proportional	
Drive system	2 wheel drive	

POWER

Power source	24V DC battery electric
Charger	90-240V, 25amp

WEIGHT

Weight	4,750 lbs	5,700 lbs
--------	-----------	-----------



MEC ELECTRIC SCISSOR LIFT

3232SEAC

Standard Features

Work Area

Roll-Out Deck Extension with Incremental Locking Positions
Standard Swing Gate
Lanyard Attachments (4)

Performance

Drive at Full Height Indoors
No Outriggers
AC Electric Drive
Fully Proportional Drive and Lift Controls
Up to 25% Gradeability

Power

Maintenance-Free AGM Batteries
Battery Charge Indicator

Serviceability

Lubrication-Free Scissor Bearings
Easy Maintenance Access to Mechanical and Electrical Components in a Slide-Out Tray
Logically Grouped Components and Numbered Wiring for Easy Reference

Safety

Dedicated Compartment Protects Electrical and Hydraulic Components
Emergency Shut-Off at Platform and Lower Controls
Non-Skid Metal Deck Construction
Descent Alarm
Drive Speed Interlock
Multi-Axis Tilt Sensor
Scissor Maintenance Lock
Multiple Disc Brakes

Other Features

Removable Upper Controls
Voltage-Compensating Fully Automatic Battery Charger
Fold-Down Guardrails
Hour Meter

Machine Tie Downs
Non-Marking Tires
All Motion Alarm
Fork Lift Pocket
Flashing Beacon (Continuous)

Optional Features

Leak Containment System™ (LCS)
Patent #11,112,060
900W Inverter
Tool Tray
Cold Weather Package

Proactive Platform Safety System™ (PPSS)
Upper Control Box Supplementary Guard
Pipe Rack
Second Year Extended Warranty



3232SEAC

U.S.

Metric

Heights

Indoor Working Height*	38 ft.*	11.6 m*
Outdoor Working Height*	30 ft.*	9.1 m*
Indoor Platform Height	32 ft.	9.8 m
Outdoor Platform Height	24 ft.	7.3 m
Stowed Height (Top Guardrail)	96 in.	2.4 m
Stowed Height (Rails Folded)	78 in.	2 m
Stowed Height (Platform Floor)	53 in.	1.3 m
Guardrail Height	43.5 in.	1.1 m
Toeboard Height	6 in.	15 cm
Ground Clearance (Stowed)	4 in.	10 cm
Ground Clearance (Elevated)	.7 in.	2 cm

Dimensions

Length-Stowed (Overall)	97 in.	2.5 m
Length-Stowed (Ladder Removed)	89.5 in.	2.3 m
Chassis Width	32 in.	81 cm
Platform Length (Extended)	124.5 in.	3.2 m
Platform Length (Retracted)	89.5 in.	2.27 m
Roll-Out Deck Length	35 in.	90 cm
Platform Width	32 in.	81 cm
Wheelbase	74 in.	1.9 m
Total Lift Capacity	550 lbs	250 kg
Personnel Capacity	2 (Indoors); 1 (Outdoors)	
Roll-Out Deck Capacity	250 lbs	113 kg

Speed

Raise/Lower Speed	52 s / 38 s	
Drive Speed (Stowed)	3 mph	5 km/h
Drive Speed (Elevated)	0.5 mph	0.8 km/h

Performance

Gradeability		25%
Turning Radius (Inside)	0 in.	0 m
Weight**	6,945 lbs.	3,150 kg
Power Source	24v 240Ah Maintenance-Free Batteries	
Controls	Proportional Drive & Lift Controls	
Tires	15 x 5 in.	38 x 13 cm

*Metric equivalent of working height adds 2m to platform height. U.S. adds 6 ft. to platform height.
**Weight may vary with certain options or configurations.

Important - MEC scissor lifts must be on a hard level surface while elevated.

Warranty - MEC Aerial Work Platforms carry a one (1) year warranty on defective component parts and a five (5) year warranty on defective structural parts. This warranty applies to the original owner only. Consult your MEC dealer for warranty details.

Meets or exceeds the requirements of ANSI A92.20 and CSA B354.6 - 2017.

Specifications subject to change without notice. Photos and diagrams in this brochure are for illustrative purposes only. Contact your MEC distributor for detailed instructions on the proper use and maintenance of this equipment.

SYKJACK ELECTRIC SCISSOR

SJ3247

Dimensions	SJ4726	SJ4732
A Work Height	31' 8" (9.65 m)	37' 8" (11.48 m)
B Raised Platform Height	25' 8" (7.82 m)	31' 8" (9.65 m)
C Lowered Platform Height	46" (1.17 m)	50" (1.27 m)
D Overall Width	47" (1.19 m)	47" (1.19 m)
E Overall Length	91.6" (2.32 m)	91.6" (2.32 m)
F Stowed Height (Rails Up)	90" (2.29 m)	94" (2.39 m)
G Stowed Height (Rails Down)	75" (1.90 m)	78.5" (1.99 m)
H Platform Width (Inside Dimension)	42" (1.07 m)	42" (1.07 m)
I Platform Length (Inside Dimension)	83" (2.11 m)	83" (2.11 m)
Specifications	SJ4726	SJ4732
Extension Deck (Roll Out)	4' (1.22 m)	4' (1.22 m)
Ground Clearance (Pothole Raised)	4.0" (10.2 cm)	4.0" (10.2 cm)
Ground Clearance (Pothole Deployed)	0.5" (1.3 cm)	0.5" (1.3 cm)
Wheelbase	69" (1.75 m)	69" (1.75 m)
Weight	5,537 lbs (2,511 kg)	5,496 lbs (2,492 kg)
Gradeability	25%	25%
Turning Radius (Inside)	28" (0.71 m)	28" (0.71 m)
Turning Radius (Outside)	104" (2.64 m)	104" (2.64 m)
Lift Time (With Rated Load)	52 sec	50 sec
Lower time (With Rated Load)	64 sec	52 sec
Drive Speed (Stowed)	2.0 mph (3.2 km/h)	2.0 mph (3.2 km/h)
Drive Speed (Raised)	0.6 mph (1.0 km/h)	0.6 mph (1.0 km/h)
Maximum Drive Height	Full Height	Full Height
Capacity (Overall)	1,000 lbs (454 kg)	700 lbs (318 kg)
Distributed Capacity (Main Platform)	700 lbs (318 kg)	450 lbs (204 kg)
Distributed Capacity (Extension Deck)	300 lbs (136 kg)	250 lbs (113 kg)
Local Floor Load (With Rated Load)	131 psi (903 kPa)	124 psi (856 kPa)
Overall Floor Load (With Rated Load)	234 psf (1,143 kg/m ²)	222 psf (1,083 kg/m ²)
Maximum # of persons at 0 mph (0 m/s) wind rating	3	2
Maximum # of persons up to 28 mph (12.5 m/s) wind rating	2	1
Tire Type	Solid, N/M	Solid, N/M
Tire Size	16 x 5 x 12	16 x 5 x 12



SNORKEL ELECTRIC SCISSOR LIFT S4740E

DIMENSIONS	S4740E*
Max. working height	45 ft 5 in
Max. platform height (A)	39 ft 5 in
Platform size (stowed)	43 in x 84 in
Platform size (extended)	43 in x 132 in
Deck extension length (B)	48 in
Overall length (D) (with step)	90.6 in
Overall length (D) (step removed)	89 in
Overall width (C)	47 in
Stowed height (E)	101 in
Min. height (guardrails folded)	76 in
Ground clearance (stowed)	2.63 in
Ground clearance (elevated)	0.75 in

PERFORMANCE	
Platform capacity	550 lbs
Max. wind speed	28 mph
Max. drive height	39 ft 5 in
Max. drive speed (stowed)	2.0 mph
Max. drive speed (elevated)	0.4 mph
Raise/lower time	68/72 sec
Gradeability	25%
Inside turning radius	21 in
Outside turning radius	95 in
Tires	15 x 5 non-marking rubber
Controls	proportional
Drive system	2 wheel drive

POWER	
Power source	24V DC battery electric
Charger	90 - 240V, 25amp

WEIGHT	
Weight	6,825 lbs



SNORKEL COMPACT RT SCISSOR S2770RT/S3370RT/S3970RT

DIMENSIONS	S2770RT	S3370RT	S3970RT
Max. working height	33 ft	39 ft	45 ft
Max. platform height (A)	27 ft	33 ft	39 ft
Platform size (stowed) (B)	9 ft 8 in x 5 ft 2 in		
Platform size (extended) (C)	13 ft 1 in x 5 ft 2 in		
Extension deck length	4 ft	4 ft	4 ft
Overall width (D)	5 ft 10 in	5 ft 10 in	5 ft 10 in
Overall length (E)	11 ft	11 ft	11 ft
Stowed height (F)	8 ft 7 in	9 ft	9 ft 8 in
Min. height (guardrails folded)	6 ft	6 ft 6 in	7 ft
Ground clearance	13 in	13 in	13 in

PERFORMANCE

Platform capacity (SWL)	1,250 lbs	1,000 lbs	771 lbs
Max. drive height	27 ft	33 ft	39 ft
Max. wind speed	28 mph	28 mph	28 mph
Max. drive speed (stowed)	2.8 mph	2.8 mph	2.8 mph
Max. drive speed (elevated)	0.3 mph	0.2 mph	0.2 mph
Raise/lower time	26/30 sec	50/60 sec	50/60 sec
Gradeability	35%	35%	35%
Max. stabilizer levelling, front to rear	6°	6°	6°
Max. stabilizer levelling, side to side	10°	10°	10°
Inside turning radius	8 ft 10 in	8 ft 10 in	8 ft 10 in
Outside turning radius	16 ft 3 in	16 ft 3 in	16 ft 3 in
Tires	27 x 10.5 -15, non-marking foam filled		
Controls	proportional joystick		
Drive system	4-wheel drive		

POWER

Power source	Kubota D-902 water-cooled diesel 22.5 hp - Tier 4 Final
--------------	---

WEIGHT

Weight	6,636 lbs	7,980 lbs	8,355 lbs
--------	-----------	-----------	-----------



JLG RT SCISSOR RT4769

STANDARD SPECIFICATIONS

Performance	Indoor/Outdoor
Platform Height (Elevated)	47-ft / 14.3-m
Platform Capacity	800-lb / 363-kg
Capacity on Platform Extension	300-lb / 136-kg
Number of Occupants	3/3
Lift / Lower Time	81/55 seconds
Maximum Drive Height	Fully Elevated
Weight w/One Extension*	15,200-lb / 6,909-kg
Drive Speed (Lowered)	3.5 mph / 5.6 km/h
Drive Speed (Raised)	0.5 mph / 0.8 km/h
Gradeability	30%
Max Tilt Rating (Side-to-Side)	2.5 Degrees
Max Tilt Rating (Fore and Aft)	3 Degrees
Turning Radius (Inside)	83-in / 2-m
Turning Radius (Outside)	175-in / 4-m

*Certain options or country standards increase weight

Engine

Dual Fuel – Kubota WG972-GL-E4 31 hp	31 hp / 23.2 kW
Diesel Fuel – Kubota D1305-E4B 24.8 hp	24.8 hp / 18.5 kW
Fuel Tank Capacity	10 gal / 38 L

Tires

Standard	26 x 12-in Foam-filled
----------	------------------------

Brakes

Rear Wheel	Spring Applied
------------	----------------

Hydraulic System

Capacity	13.2 gal / 50 L
----------	-----------------

STANDARD FEATURES

- 110V-AC Receptacle In Platform
- 26 x 12 Foam-filled Tires
- 42-in Roll-out Deck Extension
- All Motion Alarm
- ECU Controlled Engine Speed
- Fold Down Rails
- Full Time Traction Control
- Horn
- Hourmeter
- LCD Display with LiftSense System
- Lubrication-Free Scissor Arm Bushings
- Manual Descent Pull Cable
- Nickel Plated Pins, Yellow Zinc-Chromate Plated Fasteners
- Oscillating Front Axle
- Pin-based Load Sensing System
- Pin-Less Fold Down Rail System
- Platform Control Box with LCD Display, USB Charger and Phone Holster
- Proportional Lift and Drive
- Remote Engine Oil Filter Package
- Scissor Maintenance Prop
- Self-Closing Gate
- Telematics-Ready Harness
- Tie Down Lugs



GENIE MAST LIFT GR15 & GR20

Models	GR-15		GR-20	
Measurements	US	Metric	US	Metric
Working height*	20 ft 8 in	6.47 m	25 ft 9 in	8.02 m
Platform Maximum Height (Indoor)	14 ft 8 in	4.5 m	19 ft 9 in	6.0 m
Platform Restricted (Outdoor) Height	11 ft 1 in	3.4 m	15 ft 6 in	4.7 m
▲▲ Platform dimensions (length x width)				
Standard	35 x 29.5 in	.89 x .75 m	35 x 29.5 in	.89 x .75 m
Standard with extension	55 x 29.5 in	1.4 x .75 m	55 x 29.5 in	1.4 x .75 m
▲ Height - stowed	5 ft 10 in	1.78 m	6 ft 6 in	1.98 m
▲ Length - stowed	4 ft 5 in	1.35 m	4 ft 5 in	1.35 m
▲ Width	2 ft 5.5 in	.75 m	2 ft 7.5 in	.80 m
▲ Ground clearance - center	2.5 in	6 cm	2.5 in	6 cm

Productivity

Lift capacity	500 lbs	227 kg	350 lbs	159 kg
Lift capacity - extension deck	250 lbs	113 kg	250 lbs	113 kg
Drive speed - stowed	2.5 mph	4.0 km/h	2.5 mph	4.0 km/h
Drive speed - raised	0.5 mph	0.8 km/h	0.5 mph	0.8 km/h
Gradeability**	30%		30%	
Turning radius - inside	zero		zero	
Turning radius - outside	4 ft 4 in	1.32 m	4 ft 5 in	1.34 m
Raise / lower speed	21 / 19 sec	21 / 19 sec	24 / 21 sec	24 / 21 sec
Controls	24V DC proportional		24V DC proportional	
Tires - solid non-marking	10 x 3 x 8 in	25 x 8 x 20 cm	10 x 3 x 8 in	25 x 8 x 20 cm
Tilt sensor activation	front to back 3° - side to side 1.5°		front to back 3° - side to side 1.5°	

Power

Power source	24V (four 6V 225 Ah batteries)		24V (four 6V 225 Ah batteries)	
Hydraulic system capacity	2.2 gal	8.33 L	2.2 gal	8.33 L

Weight*** / Floor Loading****

Weight - ANSI/CSA	2,178 lbs	988 kg	2,531 lbs	1,140 kg
Occupied floor pressure	251.99 psf	12.1 kPa	250.39 psf	12.0 kPa



SNORKEL MAST LIFT

TM16

DIMENSIONS	TM12E	TM16E
Max. working height	18 ft	22 ft
Max. platform height (A)	12 ft	16 ft
Platform size (stowed)	27 in x 39 in	27 in x 39 in
Platform size (extended) (E)	27 in x 59 in	27 in x 59 in
Extension deck length	20 in	20 in
Overall length (D)	4 ft 6 in	4 ft 6 in
Overall width (B)	2 ft 6 in	2 ft 6 in
Stowed height (C)	5 ft 6 in	6 ft 6 in
Ground clearance	3 in	3 in

PERFORMANCE		
Platform capacity (SWL)	500 lbs	500 lbs
Max. drive height	12 ft	16 ft
Max. wind speed	28 mph	0 mph
Max. drive speed (stowed)	2.5 mph	2.5 mph
Max. drive speed (elevated)	0.4 mph	0.4 mph
Raise/lower time	12.5/10.5 sec	12.5/10.5 sec
Gradeability	25%	25%
Max. operating slope (side to side)	2°	1.5°
Max. operating slope (front to back)	2°	1.5°
Inside turning radius	0 in	0 in
Outside turning radius	55.5 in	55.5 in
Tires	12.7 in non-marking rubber	
Parking brake	2 wheel, spring-applied, electric release	
Drive system	dual DC motors	
Controls	proportional	

POWER		
Power source	24V 220 Ah batteries	
Battery charger	20 Amp	

WEIGHT		
Weight	1,850 lbs	2,430 lbs



46' SNORKEL ARTICULATED BOOM (DUAL CAPACITY) A46JRT

DIMENSIONS	A46JE	A46JRT
Max. working height	52 ft 3 in	52 ft 11 in
Max. platform height	46 ft 3 in	46 ft 11 in
Max. horizontal reach	24 ft 11 in	24 ft 11 in
Clearance height at max. outreach	24 ft 6 in	25 ft 2 in
Platform size	39 in x 72 in	39 in x 72 in
Chassis width (A)	5 ft 8 in	6 ft 10 in
Overall length (B)	18 ft 4 in	18 ft 8 in
Stowed height (C)	6 ft 7 in	7 ft 2 in
Ground clearance	6 in	13 in
PERFORMANCE		
Platform capacity (SWL)	500 lbs	500 lbs
Max. wind speed	28 mph	28 mph
Max. drive height	46 ft 3 in	46 ft 11 in
Max. drive speed (stowed)	3.2 mph	3.2 mph
Max. drive speed (elevated)	0.5 mph	0.8 mph
Jib length	5 ft	5 ft
Jib arc	140°	140°
Platform rotation	160°	160°
Superstructure rotation	360° non-continuous	360° non-continuous
Tailswing	0 in	0 in
Raise/lower time	99/92 seconds	101/98 seconds
Gradeability	30%	45%
Inside turning radius	2 ft	2 ft 8 in
Outside turning radius	9 ft 10 in	10 ft 5 in
Tires	non-marking, foam filled IN240/55D 17.5	foam filled lug 355/55D625
Controls	proportional	proportional
Drive system	2 wheel drive	4 wheel drive
POWER		
Power source	8 x 6V 360Ah batteries	Kubota V150S 24.9hp diesel Tier 4 Final
WEIGHT		
Weight	14,690 lbs	16,620 lbs



46' SNORKEL TELESCOPIC BOOM 460SJ

DIMENSIONS	400S	460S
Max. working height	46 ft	52 ft
Max. platform height (A)	40 ft	46 ft
Max. horizontal reach	35 ft	42 ft
Platform size	8 ft x 3 ft	8 ft x 3 ft
Overall width (B)	7 ft 7 in	7 ft 7 in
Transport width	6 ft 10 in	6 ft 10 in
Transport height	7 ft 10 in	10 ft 1 in
Transport length	24 ft 10 in	21 ft 6 in
Stowed length (C)	24 ft 10 in	28 ft 5 in
Stowed height (D)	7 ft 10 in	7 ft 10 in
Ground clearance	12.5 in	12.5 in

PERFORMANCE		
Platform capacity (SWL) unrestricted	600 lbs	600 lbs
Platform capacity (SWL) restricted	1,000 lbs	n/a
Max. wind speed	28 mph	28 mph
Max. drive height	40 ft	46 ft
Max. drive speed (stowed)	4 mph	4 mph
Max. drive speed (elevated)	0.75 mph	0.75 mph
Jib length	n/a	6 ft 6 in
Jib working arc	n/a	135°
Platform rotation	150°	150°
Superstructure rotation	360° continuous	360° continuous
Tailswing	35.5 in	35.5 in
Raise/lower time	64/64 sec	64/64 sec
Gradeability	50%	50%
Inside turning radius	9 ft 10 in	9 ft 10 in
Outside turning radius	16 ft 7 in	16 ft 7 in
Tires	355/55 D625 foam filled lug	
Controls	All proportional controls	
Drive system	4 wheel drive	

POWER		
Power source	Deutz 2.9L 49hp (36.5kW) Tier 4 Final	
Auxiliary power unit	12V DC	12V DC

WEIGHT		
Weight	15,730 lbs	17,260 lbs



46' JLG TELESCOPIC BOOM 460SJ

Performance

Platform Height	45-ft 4-in / 13.81-m
Horizontal Outreach	40-ft / 12.19-m
Swing	360 Degrees Continuous
Platform Capacity (Unrestricted)	550-lb / 249-kg
Platform Capacity (Restricted)	750-lb / 340-kg
Platform Capacity (Restricted)	1,000-lb / 454-kg
Platform Rotator	180 Degrees Hydraulic
Jib	6-ft / 1.83-m
Range of Articulation	130 Degrees (+70, -60)
Weight*	17,637-lb / 8,000-kg
Max. Ground Bearing Pressure	82.12 psi / 5.77 kg/cm ²
Drive Speed	4.3 mph / 6.9 km/h
Gradeability	45%
Tilt Cut Out	5 Degrees
Turning Radius (Inside/Outside)	6-ft 8.7-in (2.05-m) / 15-ft 8.6-in (4.79-m)

*Certain options or country standards increase weight

Engine

Dual Fuel – Kubota WG2503	61 hp / 45.5 kW
Diesel Fuel – Deutz D2.9L4 Tier 4 Final	49 hp / 36.5 kW
Fuel Tank Capacity	22 gal / 83.3 L

Tires

Standard	12 x 16.5 Foam-filled Lug Tread
Optional	14 x 17.5 Foam-filled 12 x 16.5 Foam-filled Non-marking 14 x 17.5 Foam-filled Non-marking 33/16LL x 16.1 Foam-filled Turf 33 x 12D610 Foam-filled

Hydraulic System

Hydraulic Reservoir	36 gal / 136.27 L
Auxiliary Power	12V DC



60' JLG ARTICULATED BOOM 600AJ

Performance

Platform Height	60 ft 7 in.	18.47 m
Horizontal Outreach	39 ft 9 in.	12.10 m
Up and Over Clearance	26 ft 7 in.	8.1 m
Swing	360 Degrees Continuous	
Platform Capacity	500 lb	227 kg
Platform Rotator	180 Degrees Hydraulic	
Jib Range of Articulation	130 Degrees (+70, -60)	
Weight		
600AJ	22,691 lb	10,292 kg
600AJ Narrow	24,200 lb	10,977 kg
Max. Ground Bearing Pressure		
600AJ	75 psi	5.25 kg/cm ²
600AJ Narrow	94 psi	6.6 kg/cm ²
Drive Speed 2WD	4.25 mph	6.8 kph
Drive Speed 4WD	4.25 mph	6.8 kph
Gradeability 2WD	30%	
Gradeability 4WD	45%	
Tilt Cut Out	4 Degrees	
Axle Oscillation	8 in. 0.2 m	
Turning Radius Inside/Outside		
2WS	10 ft. 11 in./17 ft. 7 in.	3.33 m/5.36 m
4WS	5 ft. 6 in./11 ft. 8 in.	1.68 m/3.56 m
Narrow Models		
4WS	5 ft. 7 in./11 ft. 2 in.	1.7 m/3.4 m

Standard Specifications

Power Source

Dual Fuel Engine		
Ford MSG425	84 hp	62 kw
Diesel Engine		
Deutz D2.9L4 Tier 4 Final	49 hp	36.4 kw
Fuel Tank Capacity	30 gal.	113.6 L

Hydraulic System

• Capacity	30.6 gal.	115.8 L
• Auxiliary Power	12V DC	

Tires

• Standard	IN355/55D-6.25 Foam Filled
• Narrow Models	36x14-20 Solid Tires



65' SNORKEL ARTICULATED BOOM AB60J

DIMENSIONS	AB60J
Max. working height	65 ft 9 in
Max. platform height	59 ft 9 in
Max. horizontal reach	43 ft 1 in
Clearance height at max. outreach	19 ft 6 in
Platform size	8 ft x 3 ft
Overall width	7 ft 11.5 in
Overall length (A)	29 ft 2 in
Stowed height (B)	8 ft 3 in
Ground clearance	12 in

PERFORMANCE	
Platform capacity (SWL)	500 lbs
Max. drive height	60 ft
Max. wind speed	28 mph
Max. drive speed (stowed)	3.2 mph
Max. drive speed (elevated)	0.6 mph
Jib length	6 ft
Jib working arc	75°
Platform rotation	180°
Superstructure rotation	360° continuous
Tailswing (riser boom elevated)	0 in
Tailswing (riser boom stowed)	60 in
Raise/lower time	125/121 sec
Gradeability	20%
Inside turning radius	17 ft 2.5 in
Outside turning radius	20 ft 3 in
Tires	15 x 19.5 foam filled lug
Controls	proportional joystick drive, lift & rotation
Drive system	4 wheel drive

POWER	
Power source	Kubota V2403 65hp diesel - Tier 4 Final

WEIGHT	
Weight	24,800 lbs



65' GENIE TELESCOPIC BOOM (DUAL CAPACITY) S-65XC

Working height max. ⁽¹⁾	21,81 m
Platform height max.	19,81 m
Horizontal reach max.	16,51 m
Below ground reach	2,65 m
A Platform length (8 ft/6 ft)	0,91 m/0,76 m
B Platform width (8 ft/6 ft)	2,44 m/1,83 m
C Height - stowed (tires)	2,81 m
C Height - stowed (TraX)	2,81 m
D Length - stowed (tires)	9,76 m
D Length - stowed (TraX)	9,76 m
D Length - storage/transport (jib tucked under)	7,80 m
E Width (tires)	2,49 m
F Width (TraX)	2,58 m
F Wheelbase	2,49 m
G Ground clearance - center (tires)	0,41 m
G Ground clearance - center (TraX)	0,41 m
H Height under counterweight	1,17 m

Productivity

Lift capacity max. - unrestricted	300 kg
Lift capacity max. - restricted	454 kg
Number of Platform Occupants (restricted/unrestricted)	3/2
Platform rotation	160°
Jib length	1,52 m
Vertical jib rotation (up/down)	133°
Turntable rotation	360°
Turntable tailswing	1,41 m
Drive speed - stowed (tires)	4,8 km/h
Drive speed - stowed (TraX)	3,7 km/h
Drive speed - raised (tires)	0,3 m/s
Drive speed - raised (TraX)	0,2 m/s
Gradeability - stowed ⁽²⁾	45 %
Tilt sensor activation (front to back/side to side)	7°/5°
Turning radius - inside/outside (tires)	2,40 m/5,50 m
Turning radius - inside/outside (TraX)	3,48 m/6,50 m
Tires	355/55D625
Track system - 4 points	TraX

Power

Power	Diesel
Hydraulic tank capacity	151 L
Fuel tank capacity	132 L

Weight⁽³⁾ and Floor Loading⁽⁴⁾

Weight (tires)	11,412 kg
Weight (TraX)	13,154 kg
Tire contact pressure	620 kPa
Track contact pressure	170 kPa
Occupied floor pressure (tires)	14,55 kPa
Occupied floor pressure (TraX)	13,66 kPa

Sound and Vibration Levels

Sound Pressure level (ground workstation)	85 dBA
Sound Pressure level (platform workstation)	75 dBA



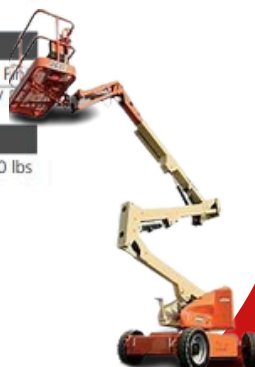
66' SNORKEL TELESCOPIC BOOM 660SJ

DIMENSIONS	600S	660SJ
Max. working height	66 ft	72 ft
Max. platform height (A)	60 ft	66 ft
Max. horizontal reach	52 ft 7 in	59 ft 1 in
Platform size	8 ft x 3 ft	8 ft x 3 ft
Transport width	7 ft 4 in	7 ft 4 in
Overall width (B)	8 ft 1 in	8 ft 1 in
Overall length (C)	30 ft 1 in	34 ft 2 in
Transport length	30 ft 1 in	28 ft
Stowed height (D)	8 ft 3 in	8 ft 3 in
Transport height	8 ft 3 in	10 ft 1 in
Ground clearance	13.5 in	13.5 in

PERFORMANCE		
Platform capacity (SWL) unrestricted	600 lbs	600 lbs
Platform capacity (SWL) restricted	1,000 lbs	n/a
Max. drive height	60 ft	66 ft
Max. wind speed	28 mph	28 mph
Max. drive speed (stowed)	3.5 mph	3.5 mph
Max. drive speed (elevated)	0.6 mph	0.6 mph
Jib length	n/a	6 ft 6 in
Jib working arc	n/a	135°
Platform rotation	150°	150°
Superstructure rotation (continuous)	360°	360°
Raise/lower time	50/50 sec	50/50 sec
Tailswing	47 in	47 in
Gradeability	45%	45%
Inside turning radius	10 ft 1 in	10 ft 1 in
Outside turning radius	17 ft 1 in	17 ft 1 in
Tires	355/55 D625 foam filled lug	
Controls	Proportional drive, raise, slew, extend, jib and platform rotate	
Drive system	4 wheel drive	

POWER		
Power source	Cummins 65hp (48.5kW) turbo diesel - Tier 4 Final	
Auxiliary power unit	12V DC	12V

WEIGHT		
Weight	24,640 lbs	27,300 lbs



80' JLG ARTICULATED BOOM LIFT 800AJ

Performance

Platform Height	80 ft	24.38 m
Horizontal Outreach		
800A	53 ft	16.15 m
800AJ	51 ft 10 in.	15.8 m
Up and Over Height	32 ft 1 in.	9.78 m
Swing	360 Degrees Continuous	
Platform, Side Entry	36 x 96 in.	0.91 x 2.44 m
Platform Capacity-Restricted		
800A only	1000 lb*	454 kg
Platform Capacity-Unrestricted	500 lb	227 kg
Platform Rotator	180 Degrees Hydraulic	
Jib Length		
800AJ	6 ft	1.83 m
Jib Range of Articulation		
800AJ	130 Degrees (+70, -60)	
Weight**	34,300 lb	15,558 kg
Max. Ground Bearing Pressure	76 psi	5.3 kg/cm ²
Drive Speed 2WD or 4WD	3.0 mph	4.8 km/h
Gradeability		
2WD	30%	
4WD	45%	
Turning Radius (Inside)		
2WS	12 ft	3.66 m
4WS	7 ft	2.13 m
Turning Radius (Outside)		
2WS	22 ft 6 in.	6.86 m
4WS	14 ft 6 in.	4.42 m

Standard Specifications

Power Source

Dual Fuel Engine		
GM Vortec 3000 MPFI	82 hp	61 kW
Diesel Engine		
Deutz TD2.9L4 Tier 4 Final	67 hp	50 kW
Fuel Tank Capacity	39 gal.	147.6 L

Hydraulic System

• Capacity	40 gal.	151.4 L
• Auxiliary Power	12V DC	

Tires

• Standard	15-625 Wide Lug Tread
• Optional	18 x 625 Foam-Filled Tires



85' SNORKEL ARTICULATED BOOM A85J

DIMENSIONS	AB80J	AB85J
Max. working height	85 ft 11 in	90 ft 6 in
Max. platform height	79 ft 11 in	84 ft 6 in
Max. horizontal reach	59 ft 5 in	61 ft 11 in
Clearance height at max. outreach	27 ft 11 in	27 ft 11 in
Platform size	8 ft x 3 ft	8 ft x 3 ft
Overall width (A)	8 ft 6 in	8 ft 6 in
Overall length (B)	32 ft 2 in	41 ft 2 in
Stowed height (C)	9 ft 10 in	9 ft 10 in
Ground clearance	13 in	13 in

PERFORMANCE		
Platform capacity (SWL)	500 lbs	500 lbs
Max. wind speed	28 mph	28 mph
Max. drive height	79 ft 11 in	84 ft 6 in
Max. drive speed (stowed)	3.0 mph	3.0 mph
Max. drive speed (elevated)	0.6 mph	0.6 mph
Jib length	5 ft	6 ft 6 in
Jib arc	140°	135°
Jib rotation	n/a	140° side to side
Platform rotation	150°	150°
Superstructure rotation (continuous)	360°	360°
Tailswing	35 in	35 in
Raise/lower time	240/240 seconds	240/240 seconds
Gradeability	30%	30%
Inside turning radius	7 ft 10 in	7 ft 10 in
Outside turning radius	15 ft 5 in	15 ft 5 in
Tires	15 x 625 foam filled lug	
Controls	proportional joystick	
Drive system	4 wheel drive	

POWER		
Power source	Kubota V2403 65hp diesel - Tier 4 Final	

WEIGHT		
Weight	36,800 lbs	38,580 lbs



85' GENIE TELESCOPIC BOOM S -85XC

Models	S-85 XC	
Measurements	US	Metric
Working height max. ⁽¹⁾	91 ft	27.91 m
Platform height max.	85 ft	25.91 m
Horizontal reach max.	74 ft 6 in	22.71 m
Below ground reach	8 ft 8 in	2.64 m
A Platform length (8 ft/6 ft)	3 ft/2 ft 6 in	0.91 m/0.76 m
B Platform width (8 ft/6 ft)	8 ft/6 ft	2.44 m/1.83 m
C Height - stowed	9 ft 2 in	2.80 m
D Length - stowed	40 ft 7 in	12.37 m
E Length - storage/transport (jib tucked under)	33 ft 8 in	10.25 m
F Width	8 ft 2 in	2.49 m
G Wheelbase	9 ft 4 in	2.85 m
H Ground clearance - center	15.8 in	0.40 m
I Height under counterweight	3 ft 9 in	1.14 m

Productivity

Lift capacity max. - unrestricted	660 lb	300 kg
Lift capacity max. - restricted	1,000 lb	454 kg
Number of Platform Occupants (restricted/unrestricted)	3/2	
Platform rotation	160°	
Jib length	5 ft	1.52 m
Vertical jib rotation (up/down)	133°	
Turntable rotation	360°	
Turntable tailswing	5 ft 3 in	1.60 m
Drive speed - stowed	3.0 mph	4.8 km/h
Drive speed - raised	0.5 mph	0.2 m/s
Gradeability - stowed ⁽²⁾	45 %	
Tilt sensor activation (front to back/side to side)	7° / 5°	
Turning radius - inside/outside	12 ft/21 ft 6 in	3.66 m/6.55 m
Tires	18-625	

Power

Power	Diesel	
Hydraulic tank capacity	40 gal	150 L
Fuel tank capacity	35 gal	132 L

Weight⁽³⁾ and Floor Loading⁽⁴⁾

Weight	39,500 lb	17,917 kg
Tire contact pressure	130 psi	896 kPa
Occupied floor pressure	395 psf	18.9 kPa

Sound and Vibration Levels

Sound Pressure level (ground workstation)	85 dBA
Sound Pressure level (platform workstation)	78 dBA
Vibrations	< 2.5 m/s ²

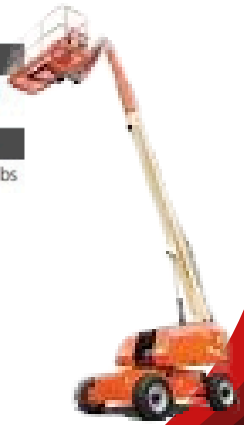


86' SNORKEL TELESCOPIC BOOM TB86J

DIMENSIONS	TB80	TB86J
Max. working height	86 ft	92 ft
Max. platform height	80 ft	86 ft
Max. horizontal reach	71 ft 2 in	78 ft 3 in
Platform size	8 ft x 3 ft	8 ft x 3 ft
Overall width (A)	8 ft 6 in	8 ft 6 in
Overall length (B)	38 ft 8 in	42 ft 3 in
Stowed height (C)	9 ft 6 in	9 ft 6 in
Ground clearance	13 in	13 in

PERFORMANCE		
Platform capacity	500 lbs	500 lbs
Max. drive height	80 ft	86 ft
Max. wind speed	28 mph	28 mph
Max. drive speed (stowed)	3 mph	3 mph
Max. drive speed (elevated)	0.6 mph	0.6 mph
Jib length	n/a	6 ft 6 in
Jib working arc	n/a	135°
Platform rotation	170°	150°
Superstructure rotation (continuous)	360°	360°
Tailswing	78.5 in	78.5 in
Raise/lower time	195/175 seconds	230/210 seconds
Gradeability	40%	40%
Inside turning radius	7 ft 10 in	7 ft 10 in
Outside turning radius	15 ft 6 in	15 ft 6 in
Tires	15 x 625 foam filled lug	
Controls	proportional joystick	
Drive system	4 wheel drive	

POWER		
Power source	Kubota V2403 65hp diesel - Tier 4 Final	
WEIGHT		
Weight	36,332 lbs	38,690 lbs



126' SNORKEL TELESCOPIC BOOM TB126

DIMENSIONS	TB120	TB126J
Max. working height	126 ft	132 ft
Max. platform height	120 ft	126 ft
Max. horizontal reach	62 ft	62 ft 11 in
Platform size	8 ft x 3 ft	8 ft x 3 ft
Overall width (A)	8 ft 6 in	8 ft 6 in
Operational width (extended)	12 ft 9 in	12 ft 9 in
Stowed length (B)	42 ft 3 in	44 ft 9 in
Stowed height (C)	9 ft 10 in	10 ft 5 in
Ground clearance	13 in	13 in

PERFORMANCE		
Platform capacity (SWL)	500 lbs	500 lbs
Max. wind speed	28 mph	28 mph
Max. drive height	120 ft	126 ft
Max. drive speed (stowed)	2.9 mph	2.9 mph
Max. drive speed (elevated)	0.15 mph	0.15 mph
Jib length	n/a	6 ft 6 in
Jib working arc	n/a	135°
Platform rotation	150°	180°
Superstructure rotation	360° continuous	360° continuous
Tailswing (axes retracted)	80.5 in	80.5 in
Tailswing (axes extended)	54.25 in	54.25 in
Raise/lower time	208/215 seconds	208/215 seconds
Gradeability	30%	30%
Inside turning radius (axes retracted)	19 ft	19 ft
Outside turning radius	33 ft	33 ft
Tires	445 - 65 D22.5 foam filled lug	
Controls	proportional joystick	
Drive system	4 wheel drive	

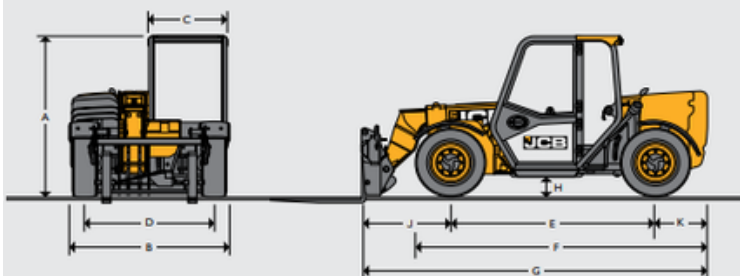
POWER		
Power source	Kubota V2403 65hp diesel - Tier 4 Final	

WEIGHT		
Weight	39,500 lbs	41,800 lbs



JCB 505-20

STATIC DIMENSIONS



A	Overall height*	ft-in (m)	6-2 (1.89)
B	Overall width (over tires)*	ft-in (m)	6-0 (1.84)
C	Inside width of cab	ft-in (m)	2-11 (0.88)
D	Front track	ft-in (m)	5-0 (1.53)
E	Wheelbase	ft-in (m)	7-10 (2.39)
F	Overall Length to front tires	ft-in (m)	11-1 (3.38)
G	Overall length to front carriage	ft-in (m)	13-1 (4)
H	Ground clearance	ft-in (m)	0-9 (0.23)
J	Front wheel center to carriage	ft-in (m)	3-4 (1.02)
K	Rear wheel center to rear face	ft-in (m)	2-0 (0.6)
	Outside turn radius (over tires)	ft-in (m)	12-1 (3.7)
	Carriage roll back angle	degrees	11
	Carriage dump angle	degrees	114
	Weight	lb (kg)	12100 (5490)
	Tires	industrial	12 x 16.5

Maximum lift capacity	lb (kg)	5500 (2500)
Lift capacity to full height	lb (kg)	3900 (1750)
Lift capacity at full reach	lb (kg)	1750 (800)
Lift height	ft-in (m)	20-0 (6)
Reach at maximum lift height	in (m)	-6 (-0.15)
Maximum forward reach (to front of carriage)	ft-in (m)	11-6 (3.5)
Reach with 2,600 lbs load	ft-in (m)	8-7 (2.64)
Complies with stability test ANSI B56.6.		



XTREME TELEHANDLER XR843-B

SPECIFICATIONS		
Lift capacity	8,000 lbs	3,628kg
Max lift height	43'	13.1m
Forward reach	26' 11"	8.2m
Frame leveling L/R	11°	
Weight*	27,000 lbs	12,245kg
Engine (Cummins 3.8L)	74 hp HT (Tier 4F)	
Axles	ZF MST3055 / 3055	
Transmission	ZF 3WG94	
Fuel capacity	50 gal	189L
Tires	foam filled 15.5 x 25	
Hydraulic flow (per min)	49 gal	185.4L
Hydraulic pressure	3,500 psi	241.3bar
Hydraulic oil capacity	62 gal	234.6L
Length to fork face	20' 10"	6.35m
Width	101"	2.56m
Height	8'	2.43m
Wheelbase	125"	3.18m
Ground clearance	16.5"	419mm
Turning radius	12'	3.65m



JCB 508-66TC

STATIC DIMENSIONS	506-23	509-23	512-26	509-45	510-44	510-55	508-66
Overall height	8' 2"	8' 2"	8' 6"	8' 6"	8' 6"	8' 10"	8' 11"
Overall width (over tires)*	7' 4"	7' 4"	8' 4"	7' 8"	7' 9"	8'	8'
Overall width (over tires)*	3' 1"	3' 1"	3' 1"	3' 1"	3' 1"	3' 1"	3' 1"
Front track	5' 11"	5' 11"	6' 6"	6' 2"	6' 3"	6' 3"	6' 5"
Wheelbase	9'	9'	9'	9'	9'	9'	9'
Overall length to front tires	14' 4"	14' 4"	14' 6"	15' 6"	17'	16' 8"	16' 8"
Overall length to front carriage	16' 4"	16' 4"	17' 3"	20' 5"	20' 6"	20' 10"	22' 4"
Ground clearance	1' 4"	1' 4"	1' 3"	1' 3"	1' 4"	1' 4"	1' 4"
Front wheel center to carriage	4' 1"	4' 1"	6' 11"	5' 4"	5' 4"	6' 3"	7' 10"
Rear wheel center to rear face	3' 2"	3' 2"	NA	4' 5"	5' 5"	5' 4"	7' 10"
Overall width with stabilizers fully deployed	N/A	N/A	NA	8' 5"	8' 9"	11' 6"	12' 6"
Outside turn radius (over tires)	12' 2"	12' 2"	13' 5"	12' 3"	13' 5"	13' 5"	13' 5"
Carriage rollback angle	42.6°	42.6°	47°	37°	41.5°	39°	39°
Carriage dump angle	37.5°	33°	33°	12.5°	9.8°	8.8°	8.8°
Weight	15,560 lb	17,306 lb	24,340 lb	23,996 lb	24,449 lb	27,494 lb	26,627 lb
Tires	15.5/80-24	15.5/80-24	480/80 R26	15.5/80-24	15.5/25	17.5/25 16 PR	17.5/25

* Dependent upon the specified

LIFT PERFORMANCE	506-23	509-23	512-26	509-45	509-45	510-44	510-44	510-55	510-55	508-66	508-66
Stabilizers				retracted	extended	retracted	extended	retracted	extended	retracted	extended
Maximum lift capacity	6,000 lb	9,000 lb	12,000 lb	8,800 lb	8,800 lb	10,000 lb	10,000 lb	10,000 lb	10,000 lb	8,800 lb	8,800 lb
Lift capacity to full height	6,000	5,250	6,600	3,300	6,600	6,000	10,000	3,000	5,000	1,100	3,300
Lift capacity at full reach	3,000	3,500	3,800	440	2,750	1,250	2,500	0	1,000	0	440
Lift height	23'	23'	26' 6"	45' 2"	45' 2"	44' 3"	44' 3"	42' 10"	54' 9"	65' 7"	65' 7"
Reach at maximum lift height	2'	2'	3'	10' 1"	10' 1"	5' 6"	5' 6"	7'	6' 8"	21'	21'
Maximum forward reach	12' 2"	12' 2"	14' 8"	31' 9"	31' 9"	30' 8"	30' 8"	30'	41' 5"	52' 1"	52' 1"
Reach with 1 lb test load	12' 2"	12' 2"	12'	20' 5"	20' 5"	30' 3"	30' 3"	18' 8"	34' 4"		
Placing height	20' 6"	20' 6"		40' 1"	40' 1"	43' 4"	43' 4"	35' 9"	53' 2"		

ENGINE – JCB EcoMax – Latest technology and advanced design provides low fuel consumption, reduced noise, high torque and power output, total reliability and minimal maintenance. Two-stage, dry type air filter with primary and safety elements. EPA Stage IV / Tier 4 emissions compliant.

ENGINE	506-23 TC/508-66 TC	509-23 TC/509-23 TC	512-26 TC/509-45 TC	510-44 TC/510-44 TC	510-55 TC	510-55 TC
Emissions level	Stage IV / Tier 4		Stage IV / Tier 4			Stage IV/Tier 4
Manufacturer	JCB		JCB			JCB
Displacement	4.4 liter		4.4 liter			4.4 liter
Cylinders	4		4			4
Bore size	4.05"		4.05"			4.05"
Stroke	5"		5"			5"
Aspiration	Turbocharged cooled		Turbocharged cooled & intercooler			Turbocharged cooled
Power @ 2,200 rpm	74 hp		109 hp			125 hp
Torque @ 1,300 rpm	400 Nm		516 Nm			550 Nm
After treatment	N/A		SCR & DEF			SCR & DEF

HYDRAULIC CYCLE TIMES	506-23	509-23	509-45	512-26	510-44	510-55	508-66
Lift (seconds)	7.2	88	13.5	7.4	15.1	22.7	17.3
Lower (seconds)	5.4	6.5	11	8.3	15.2	23.4	15.9
Extend (seconds)	6.8	6.8	15.6	8.3	19.5	18.3	28.1
Retract (seconds)	5	5	14.4	2.8	19.5	16.7	22.7
Bucket dump (seconds)	3.5	3.5	1.7	2.8	3.2	4.2	6.1
Bucket crowd (seconds)	2.9	2.9	2	3	2.5	4.6	5.9

HYDRAULICS	506-23	509-23	509-45	512-26	510-44	510-55	508-66
Hydraulic system pressure (PSI)	3,500	3,770	3,770	3,770	3,500	3,770	3,770
Max. pump flow (gpm)	21.6	23.2	29	37	29	43	29

SERVICE CAPACITIES

XTREME TELEHANDLER XR1147-B

SPECIFICATIONS		
Lift capacity	11,000 lbs	4,990kg
Max lift height	47'	14.32m
Forward reach	31' 6"	9.6m
Frame leveling L/R	11°	
Weight*	30,610 lbs	13,884kg
Engine (Cummins 3.8L)	74 hp HT (Tier 4F)	
Axles	ZF MST3055 / 3060	
Transmission	ZF 3WG94	
Fuel capacity	50 gal	189L
Tires	foam filled 15.5 x 25	
Hydraulic flow (per min)	49 gal	185.4L
Hydraulic pressure	3,500 psi	241.3bar
Hydraulic oil capacity	62 gal	234.6L
Length to fork face	21' 3"	6.47m
Width	101"	2.56m
Height	8' 1"	2.46m
Wheelbase	125"	3.18m
Ground clearance	16.5"	419mm
Turning radius	12'	3.65m



30' BUCKET TRUCK

GENERAL SPECIFICATIONS	VANTEL-29-N	VANTEL-29-NE
Horizontal Reach	20 ft. 8 in. (6.30 m)	22 ft. 7 in. (6.88 m)
Standard Platform Capacity	350 lbs. (159 kg)	350 lbs. (159 kg)
Outer Boom Travel	-8° to +80°	-8° to +80°
Inner Boom Extension	116 in. (2.95 m)	116 in. (2.95 m)

Van Mount Pedestal (based on 30 in. (0.76 m) floor height.)

Height to Bottom of Platform	29 ft 3 in. (8.91 m)	30 ft. 1 in. (9.17 m)
Working Height	34 ft 3 in. (10.4 m)	35 ft. 1 in. (10.6 m)
Stowed Travel Height	10 ft. 1 in. (3.07 m)	10 ft. 1 in. (3.07 m)
Weight of Lift w/Mounting Hardware	1475 lbs. (670 kg)	1495 lbs. (679 kg)

Hydraulic System

Operating Pressure	2000 PSI (141 kg/cm ²)	2000 PSI (141 kg/cm ²)
Flow Rate	2 GPM (8 lpm)	2 GPM (8 lpm)
Filtration	10 micron return	10 micron return
	100 mesh suction	100 mesh suction
System Type	Open Center	Open Center



40' BUCKET TRUCK

SST-36-N/NE DIMENSIONAL SPECIFICATIONS

Horizontal Reach (SST-36-N)	24'8" (7.5m)
Horizontal Reach (SST-36-NE)	26'7" (7.5m)
Standard Platform Capacity	350 lbs. (160kg)
Outer Boom Lift Eye Capacity	500 lbs. (227kg)
Working Height	40'6" (12.3m)
Stowed Travel Height	10'5" (3.2m)
Weight of Lift without oil and mounting hardware	2,100 lbs. (950kg)

HYDRAULIC SYSTEM

Operating Pressure	2000 PSI (210kg/cm ²)
Flow Rate	1.5 to 2 GPM (6 to 8 lpm)
Filtration	10 micron return
System Type	Open center

BOOM ACTION

Inner Boom	116" (2.9m) Extension
Outer Boom	-14° to +74°
Lower Boom	-6° to vertical

AMBIENT TEMPERATURE RANGE FOR STRUCTURAL INTEGRITY

-40°F (40°C) to 125°F (52°C)

SST-36-N/NE VEHICLE SPECIFICATIONS

Frame Section Modulus (per frame rail)	9.25 in. ³ (152 cm ³)
Frame Resisting Bending Moment (per frame rail)	333,000 in.-lbs. (37,600 N-m)
Cab to Rear Axle Dimension	60 in. (1.52m)

WITH TORSION BAR

Minimum GVWR	14,500 lbs. (6780kg)
Minimum GVWR (Front)	5,000 lbs. (2270kg)
Minimum GVWR (Rear)	10,000 lbs. (4540kg)
Approximate curb weight for stability	12,000 lbs. (5440kg)

WITH H-FRAME OUTRIGGERS (Mounted behind cab)

Minimum GVWR	14,500 lbs. (6780kg)
Minimum GVWR (Front)	5,000 lbs. (2270kg)
Minimum GVWR (Rear)	10,000 lbs. (4540kg)
Approximate curb weight for stability	10,000 lbs. (4540kg)

60' BUCKET TRUCK

L60

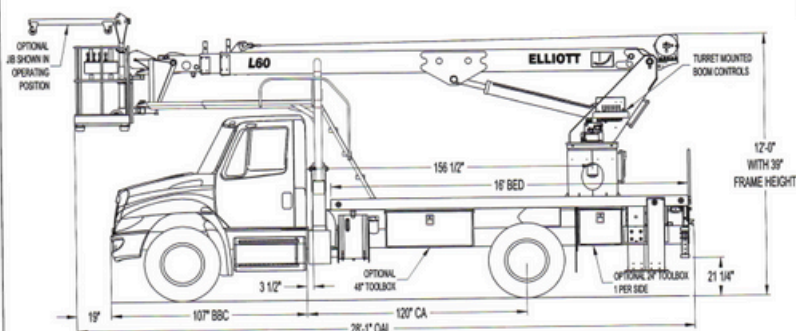
BOLAND
Equipment Rentals

L60R

TECHNICAL SPECIFICATIONS



L60R SIDE VIEW DIAGRAM

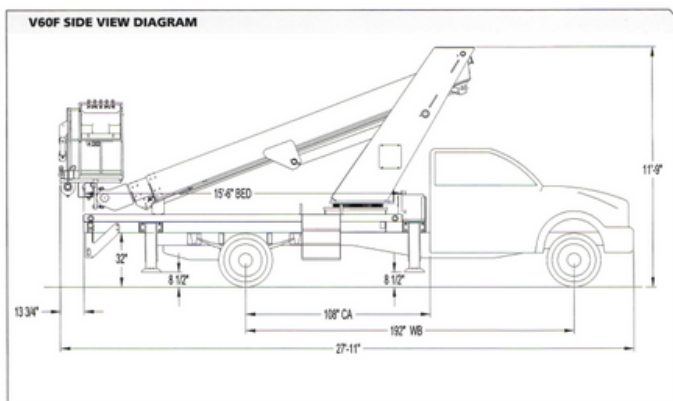


Dimensions approximate and vary with truck specifications.

G.V.W.R.-25,999 lbs./29,000 lbs. • Front axle-10,000 lbs. • Rear axle-19,000 lbs.

• Working Height	62'/18.9 m	• Powered Boom Sections	3
• Working Side Reach	56'/17 m	• Overall Height	12'-0"/3.6 m
• Platform Capacity	500 lbs/227 kg	• Unit Weight (Bare)	13,500 lbs/6,123 kg
• Platform Size	40x60"/102x152 cm	• Outrigger Spread Main	18'/5.5m
• Platform Type	EZR	• Outrigger Spread Auxiliary	12'/3.6 m
• Lifting Capacity (Main Winch)	5,900 lbs/2,676 kg	• Front Gross Axle Weight Rating	10,000 lbs/4,536 kg
• Jib Winch	500 lbs/227 kg	• Rear Gross Axle Weight Rating	19,000 lbs/8,618 kg

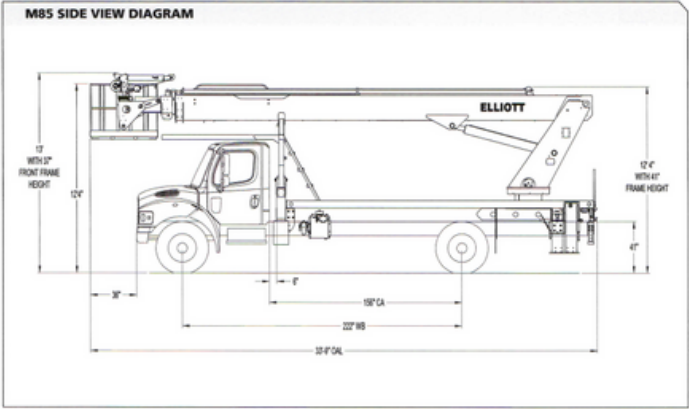
60' BUCKET TRUCK V60



• Working Height	63'7/19.2 m	• Powered Boom Sections	3
• Working Side Reach	38'7/11.5 m	• Overall Height	11'3"/3.4 m
• Platform Capacity	500 lbs/227 kg	• Unit Weight (Bare)	7,760 lbs/3,520 kg
• Platform Size	30x40 in/76x102 cm	• Outrigger Spread Main	8'7/2.4m
• Platform Type	Top-Mount	• Outrigger Spread Auxiliary	8'7/2.4m
• Lifting Capacity (Main Winch)	N/A	• Front Gross Axle Weight Rating	7,000 lbs/3,175 kg
• Jib Winch	500 lbs/227 kg	• Rear Gross Axle Weight Rating	13,500 lbs/6,123 kg



85' BUCKET TRUCK



• Working Height	87'/26.5 m	• Powered Boom Sections	3
• Working Side Reach	60'/18.2 m	• Overall Height	13'/3.9 m
• Platform Capacity	750 lbs/340 kg	• Unit Weight (Bare)	13,500 lbs/6,123 kg
• Platform Size	30x54 in/76x137 cm	• Outrigger Spread Main	18'/5.5 m
• Platform Type	End-Hung	• Outrigger Spread Auxiliary	12'/3.6 m
• Lifting Capacity (Main Winch)	N/A	• Front Gross Axle Weight Rating	10,000 lbs/4,536 kg
• Jib Winch	500 lbs/227 kg	• Rear Gross Axle Weight Rating	19,000 lbs/8,618 kg



HIGH-RAIL BUCKET TRUCK

STP-36-NE

Reliable Light-Duty Cable Placer



GENERAL SPECIFICATIONS:

Horizontal Reach	26 ft 6 in (8.1 m)
Platform Capacity	350 lbs (160 kg)
Cable Down Load Capacity	50 lbs (23 kg)
Total Unit Capacity (Platform + Cable Down Load)	350 lbs (160 kg)
Side Pull Capacity (Fairlead retracted)	400 lbs (180 kg)
Side Pull Capacity (Fairlead extended)	350 lbs (160 kg)

WITH STANDARD PEDESTAL:

Height to Bottom of Platform	35 ft 6 in (10.8 m)
Working Height	40 ft 6 in (12.3 m)
Stowed Travel Height	10 ft 6 in (3.2 m)

HYDRAULIC SYSTEM:

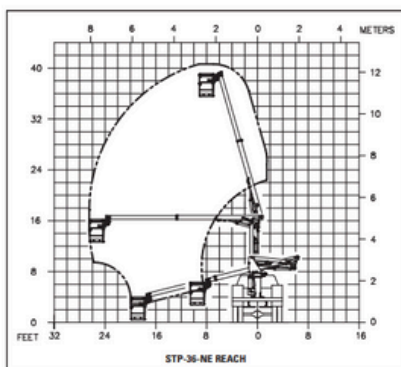
Operating Pressure	2250 psi (155 bar)
Flow Rate	2 gpm (8 lpm)
Filtration	10 micron return 100 mesh suction
System Type	Open Center

BOOM ACTION:

Outer/Inner Boom Articulation	-14° to +74°
Lower Boom Travel	-6° to +90°
Inner Boom Extension	116 in (2.9 m)
Rotation	370° Non-Continuous

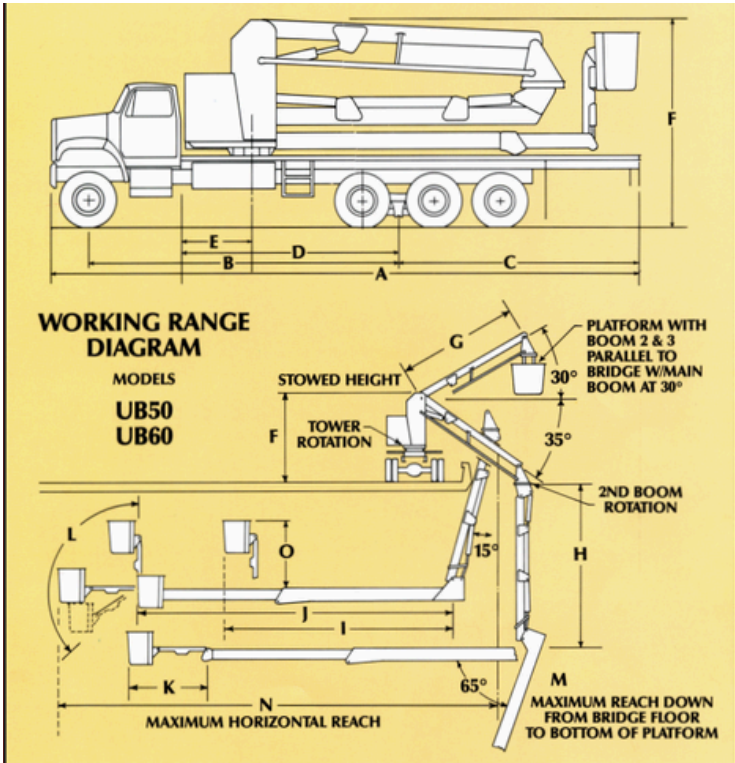
OPTIONS:

- Lift Eye (500 lb max)
- Backup 12-Volt Pump
- Various Tool Trays
- Emergency Lowering
- 120V to Platform
- Fairleads
- Pneumatic Airline(s) to Platform



UNDERBRIDGE INSPECTION TRUCK

UNIT UB50 & UB60



DIMENSION	A	B	C	D	E	F	G	H	I	J	K	L	M	N	O
MODEL UB50	37'0" (11.3 m)	19'2" (5.8 m)	14'11" (4.5 m)	14'4" (4.4 m)	4'3" (1.3 m)	13'3" (4.0 m)	16'11" (5.2 m)	24'1" (7.3 m)	24'8" (7.5 m)	37'8" (11.5 m)	8'0" (2.4 m)	125°	63'0" (19.2 m)	51'9" (15.8 m)	7'1" (2.2 m)
MODEL UB60	41'0" (12.5 m)	19'2" (5.8 m)	17'3" (5.3 m)	14'4" (4.4 m)	4'3" (1.3 m)	13'3" (4.0 m)	16'11" (5.2 m)	24'1" (7.3 m)	32'10" (10.0 m)	44'2" (13.5 m)	9'3" (2.8 m)	136°	70'0" (21.3 m)	60'6" (18.4 m)	9'9" (3.0 m)

TRAFFIC CONTROL AND HIGHWAY SAFETY

Our professionally trained crews work to maintain safe roadways, keep your employees safe, and provide federal and state compliant work zone operations. Our TCC certified team leaders have extensive experience.

Temporary Shoulder Closure
Temporary Lane Shift
Temporary Single and Multi Lane Closure
Mobile Closure
and more!



ANSI 99.22 AND 92.24 TRAINING COURSE



Safety Training and UB Familiarization

Our one-day training program covers the safe operation of Aspen Aerials UB50 and UB60 machines.

MEWP Certification

The course is split between the classroom and hands-on training and will include maintenance, troubleshooting, and operational procedures.

Attendees will be provided a certificate upon completion.



Proud Dealers of :

 **snorkel™**

JLG®

Genie®

ELLIOTT

 **JCB**

XTREME
MANUFACTURING

SKYJACK™
simply reliable