

600AJ

ARTICULATING BOOM LIFT

BOLAND EQUIPMENT RENTALS



Performance

Platform Height	60 ft 7 in.	18.47 m
Horizontal Outreach	39 ft 9 in.	12.10 m
Up and Over Clearance	26 ft 7 in.	8.1 m
Swing	360 Degrees Continuous	
Platform Capacity	500 lb	227 kg
Platform Rotator	180 Degrees Hydraulic	
Jib Range of Articulation	130 Degrees (+70, -60)	
Weight		
600AJ	22,691 lb	10,292 kg
600AJ Narrow	24,200 lb	10,977 kg
Max. Ground Bearing Pressure		
600AJ	75 psi	5.25 kg/cm2
600AJ Narrow	94 psi	6.6 kg/cm2
Drive Speed 2WD	4.25 mph	6.8 kph
Drive Speed 4WD	4.25 mph	6.8 kph
Gradeability 2WD	30%	
Gradeability 4WD	45%	
Tilt Cut Out	4 Degrees	
Axle Oscillation	8 in. 0.2 m	
Turning Radius Inside/Outside		
2WS	10 ft. 11 in./17 ft. 7 in.	3.33 m/5.36 m
4WS	5 ft. 6 in./11 ft. 8 in.	1.68 m/3.56 m
Narrow Models		
4WS	5 ft. 7 in./11 ft. 2 in.	1.7 m/3.4 m

Standard Specifications

Power Source

Dual Fuel Engine		
Ford MSG425	84 hp	62 kw
Diesel Engine		
Deutz D2.9L4 Tier 4 Final	49 hp	36.4 kw
Fuel Tank Capacity	30 gal.	113.6 L

Hydraulic System

• Capacity	30.6 gal.	115.8 L
• Auxiliary Power	12V DC	

Tires

• Standard	IN355/55D-6.25 Foam Filled
• Narrow Models	36x14-20 Solid Tires

Standard Features

- Oscillating Axle
- 180 Degree Hydraulic Platform Rotator
- 110V-AC Receptacle in the Platform
- 4 Degree Tilt Alarm/Indicator Light
- Swing-Out Engine Tray
- 12V-DC Auxiliary Power
- Hourmeter
- Horn
- Control ADE® System
- Proportional Controls
- Gull-Wing Engine Hood
- Platform Console Machine
- Status Light Panel*
- Lifting/Tie Down Lugs
- All Motion Alarm
- Glow Plugs (Diesel Engines)
- Load Sensing System
- SkyGuard SkyLine™

BOLAND EQUIPMENT RENTALS
 282 Hudson Street
 Hackensack, NJ 07601

201-342-8020
 www.berequipment.com



Accessories & Options

- Platform: 36 x 72 in. (0.91 x 1.83 m)
- Fall Arrest Platform, Rear Entry: 36 x 96 in. (0.91 x 2.44 m)
- Self-Closing Gate
- SkySense™
- Soft Touch System
- Operator Tool Tray
- 43.5 lb (19.7 kg) Propane Tank
- Cold Weather Start Kit¹
- Hostile Environment Kit²
- Light Package³
- Flashing Amber Beacon
- Arctic Package⁴
- Accessory Packages:
 - SkyPower®
 - SkyWelder®

* Provides indicator lights at platform control console for system distress, 5 degree tilt light, and foot switch status.

1. Includes glow plugs (Diesel), battery heater, oil tank heater.
2. Includes console cover, boom wipers and cylinder bellows.
3. Includes head and tail lights, platform worklights and beacon.
4. Includes arctic hydraulic hoses (drive and steer only) and main boom cable, arctic hydraulic oil, extreme cold engine oil, fuel conditioner, engine block heater, battery blanket, glow plugs, hydraulic tank heater, and oversized footswitch.

Note: Some options may increase lead time, and some option combinations may not be available.

Additional accessories and options available via JLG Aftermarket.



600AJ

ARTICULATING BOOM LIFT

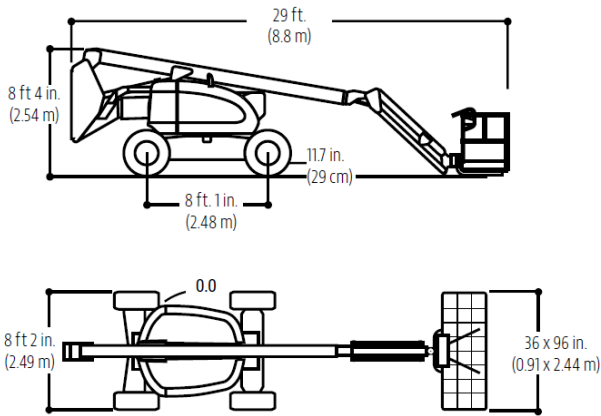
201-342-8020



Dimensions

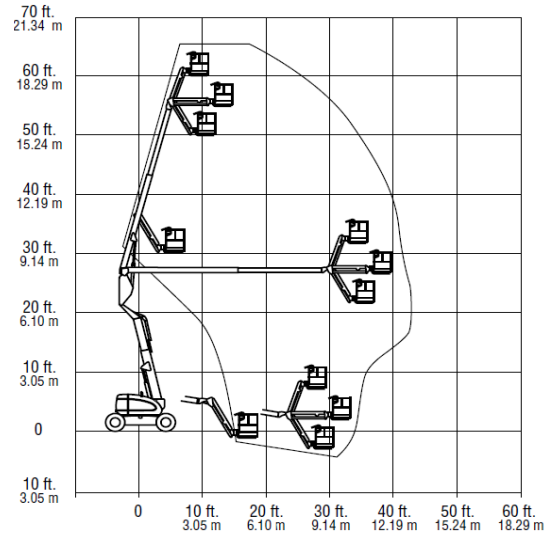
All dimensions are approximate.

600AJ



Reach Diagram

600AJ



BOLAND EQUIPMENT RENTALS
282 Hudson Street
Hackensack, NJ 07601

201-342-8020

www.berequipment.com

AB60J

ARTICULATED BOOM LIFT



- Tough & reliable diesel articulated boom lift
- Powerful 4 wheel drive for rough terrain
- Robust, rental tough design
- Simple to operate and maintain
- Ideal for both maintenance and construction applications

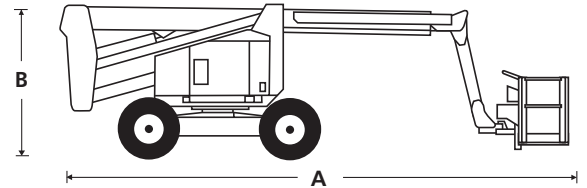
 **snorkel**™

www.berequipment.com

ARTICULATED BOOM LIFT

AB60J

DIMENSIONS	AB60J
Max. working height	65 ft 9 in
Max. platform height	59 ft 9 in
Max. horizontal reach	43 ft 1 in
Clearance height at max. outreach	19 ft 6 in
Platform size	8 ft x 3 ft
Overall width	7 ft 11.5 in
Overall length (A)	29 ft 2 in
Stowed height (B)	8 ft 3 in
Ground clearance	12 in

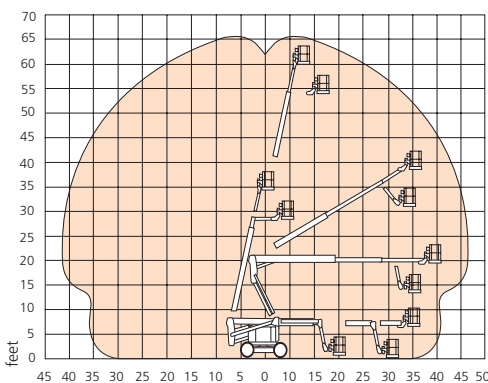


PERFORMANCE	
Platform capacity (SWL)	500 lbs
Max. drive height	60 ft
Max. wind speed	28 mph
Max. drive speed (stowed)	3.2 mph
Max. drive speed (elevated)	0.6 mph
Jib length	6 ft
Jib working arc	75°
Platform rotation	180°
Superstructure rotation	360° continuous
Tailswing (riser boom elevated)	0 in
Tailswing (riser boom stowed)	60 in
Raise/lower time	125/121 sec
Gradeability	20%
Inside turning radius	17 ft 2.5 in
Outside turning radius	20 ft 3 in
Tires	15 x 19.5 foam filled lug
Controls	proportional joystick drive, lift & rotation
Drive system	4 wheel drive

POWER	
Power source	Kubota V2403 65hp diesel - Tier 4 Final

WEIGHT	
Weight	24,800 lbs

WORKING ENVELOPE



STANDARD FEATURES

- Snorkel Guard™ secondary guarding system
- 6 ft, 75° jib
- Hydraulic platform rotation
- 360° continuous turntable rotation
- Proportional drive, lift & swing
- Dual lanyard attachment points
- Horn
- Rheostat control at ground for boom functions
- Power line to platform
- 5° tilt alarm
- Drive motion alarm
- Flashing amber light
- 2 year parts & labor, 5 year structural warranty
- ANSI compliant

OPTIONS

- Special paint colors
- Airline to platform
- Non-marking tires
- AC generator 110V/240V 2kW
- Aircraft package
- Deluxe aircraft package
- Cold weather package
- Extreme cold weather package
- Extreme environment package
- Light package
- Tow kit
- Glazier package
- Utility package
- Dual fuel
- Environmental hydraulic oil
- Tool tray



www.berequipment.com

201-342-8020