

460SJ 1000-LB

OPTIONAL PACKAGE
TELESCOPIC BOOM LIFT

BOOM LIFT



KEY SPECS

Platform Height
45-ft 4-in / 13.81-m

Horizontal Outreach
40-ft / 12.19-m

Drive Speed
4.3 mph / 6.9 km/h

Platform Capacity
550-lb / 249-kg (Unrestricted)
750-lb / 340-kg (Restricted)
1,000-lb / 454-kg (Restricted)

KEY FEATURES

- Adds an additional restricted capacity zone at a maximum of 45-ft 4-in, with an 1,000-lb restricted capacity zone at a maximum of 38-ft 9-in.
- Comes equipped with a fuel-efficient Tier 4 engine.
- This machine utilizes easy-to-use platform controls to reduce operator training time.
- Complies with A92.20 ANSI regulations, achieving the highest standards.

ACCESSORIES & OPTIONS

- 1/2-in Air Line to Platform
- 43.5-lb (19.73-kg) Propane Tank
- Accessory Packages
 - SkyPower® Package
 - SkyWelder® Package
 - SkyGlazier® Package
- AC Generator
 - 2500W, 60Hz
 - 4000W, 60Hz
- Arctic Package¹
- Bolt-on Fall Arrest System
- Cold Weather Kit²
- Hostile Environment Kit³
- Light Package⁴
- Platforms
 - Drop Bar or Swing Gate, Side Entry
 - 30 x 60-in, 36 x 72-in, 36 x 96-in
 - Drop Bar
 - 30 x 36-in
 - Fall Arrest
 - 36 x 72-in
 - Tri-Entry, Swing Gate or Drop Bar
 - 36 x 72-in, 36 x 96-in
- Platform Mesh, Bolt On
 - Mesh to Top Rail, Plastic or Aluminum
 - Mesh to Mid Rail, Plastic or Aluminum
 - Platform Rail Extensions, 6-ft and 8-ft
 - Platform Storage Tray, Center or Corner
 - Platform Worklights
 - SkySense® Enhanced Detection System
 - Soft Touch System
 - White Noise Alarm

STANDARD SPECIFICATIONS

Performance

Platform Height	45-ft 4-in / 13.81-m
Horizontal Outreach	40-ft / 12.19-m
Swing	360 Degrees Continuous
Platform Capacity (Unrestricted)	550-lb / 249-kg
Platform Capacity (Restricted)	750-lb / 340-kg
Platform Capacity (Restricted)	1,000-lb / 454-kg
Platform Rotator	180 Degrees Hydraulic
Jib	6-ft / 1.83-m
Range of Articulation	130 Degrees (+70, -60)
Weight*	17,637-lb / 8,000-kg
Max. Ground Bearing Pressure	82.12 psi / 5.77 kg/cm ²
Drive Speed	4.3 mph / 6.9 km/h
Gradeability	45%
Tilt Cut Out	5 Degrees
Turning Radius (Inside/Outside)	6-ft 8.7-in (2.05-m) / 15-ft 8.6-in (4.79-m)

*Certain options or country standards increase weight

Engine

Dual Fuel – Kubota WG2503	61 hp / 45.5 kW
Diesel Fuel – Deutz D2.9L4 Tier 4 Final	49 hp / 36.5 kW
Fuel Tank Capacity	22 gal / 83.3 L

Tires

Standard	12 x 16.5 Foam-filled Lug Tread
Optional	14 x 17.5 Foam-filled 12 x 16.5 Foam-filled Non-marking 14 x 17.5 Foam-filled Non-marking 33/16LL x 16.1 Foam-filled Turf 33 x 12D610 Foam-filled

Hydraulic System

Hydraulic Reservoir	36 gal / 136.27 L
Auxiliary Power	12V DC

STANDARD FEATURES

- 5 Degree Tilt Alarm/Indicator Light
- 12V-DC Auxiliary Power
- 110V-AC Receptacle in the Platform
- 180 Degree Hydraulic Platform Rotator
- Control ADE® System
- Four-Wheel Hydrostatic Drive
- Glow Plugs (Diesel Engines)
- Horn
- Hourmeter
- Improved Multi-Function Controls
- Interactive Display at Ground Controls
- Lifting/Tie Down Lugs
- Motion Alarm
- Oscillating Axle
- Platform Console Machine Status Light Panel*
- Proportional Controls
- SkyGuard SkyLine™
- Swing-Out Engine Tray

*Provides indicator lights at platform control console for system distress, fuel level, low fuel, 5 degree tilt light and foot switch status.

1. Includes arctic hydraulic hoses (drive, steer)-main boom cable, extreme cold engine oil, fuel conditioner, engine block heater, battery blanket, glow plugs, hydraulic tank heater, oversized footswitch and arctic hydraulic oil.

2. Includes battery blanket, hydraulic tank heater, engine block heater.

3. Includes boom wipers, cylinder bellows and console cover.

4. Includes platform work lights, head and tail lights, amber beacon.

Additional accessories and options available via JLG Aftermarket.

460SJ 1000-LB

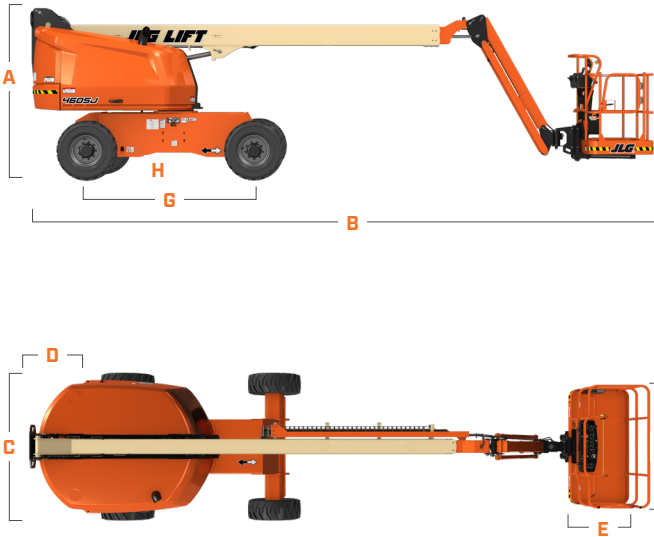
OPTIONAL PACKAGE
TELESCOPIC BOOM LIFT

BOOM LIFT



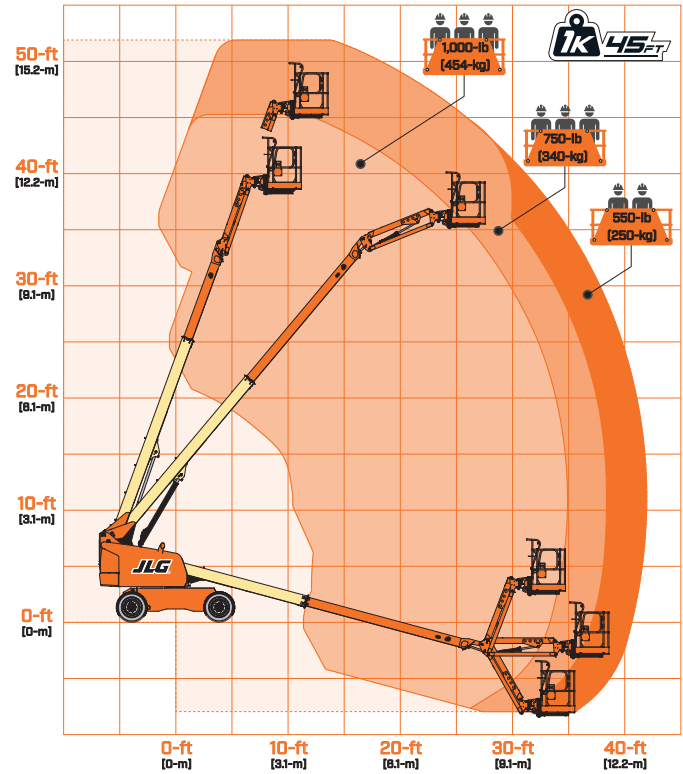
DIMENSIONS

All dimensions are approximate



- | | |
|---------------------|----------------------|
| A. Machine Height | 8-ft .5-in / 2.45-m |
| B. Machine Length | 29-ft 8.3-in / 9.1-m |
| C. Machine Width | 7-ft 6-in / 2.3-m |
| D. Tailswing | 3-ft 6-in / 93-cm |
| E. Platform Width | 36.6-in / 93-cm |
| F. Platform Length | 96-in / 2.44-m |
| G. Wheelbase | 7-ft 9.5-in / 2.38-m |
| H. Ground Clearance | 12-in / 30-cm |

REACH DIAGRAM



400S/460SJ

MID-SIZE TELESCOPIC BOOM LIFTS



- Mid-size diesel telescopic boom lifts
- Available with and without a jib boom
- 4 wheel drive for excellent rough terrain performance
- Ideal for construction and industrial applications
- Simple to operate and easy to maintain

BOLAND EQUIPMENT RENTALS
201-342-8020
www.berequipment.com

MID-SIZE TELESCOPIC BOOM LIFTS

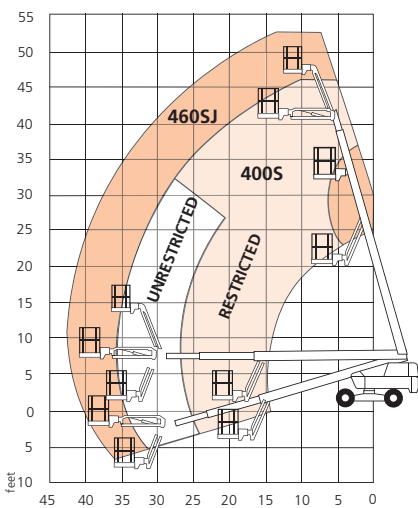
DIMENSIONS	400S	460S
Max. working height	46 ft	52 ft
Max. platform height (A)	40 ft	46 ft
Max. horizontal reach	35 ft	42 ft
Platform size	8 ft x 3 ft	8 ft x 3 ft
Overall width (B)	7 ft 7 in	7 ft 7 in
Transport width	6 ft 10 in	6 ft 10 in
Transport height	7 ft 10 in	10 ft 1 in
Transport length	24 ft 10 in	21 ft 6 in
Stowed length (C)	24 ft 10 in	28 ft 5 in
Stowed height (D)	7 ft 10 in	7 ft 10 in
Ground clearance	12.5 in	12.5 in

PERFORMANCE		
Platform capacity (SWL) unrestricted	600 lbs	600 lbs
Platform capacity (SWL) restricted	1,000 lbs	n/a
Max. wind speed	28 mph	28 mph
Max. drive height	40 ft	46 ft
Max. drive speed (stowed)	4 mph	4 mph
Max. drive speed (elevated)	0.75 mph	0.75 mph
Jib length	n/a	6 ft 6 in
Jib working arc	n/a	135°
Platform rotation	150°	150°
Superstructure rotation	360° continuous	360° continuous
Tailswing	35.5 in	35.5 in
Raise/lower time	64/64 sec	64/64 sec
Gradeability	50%	50%
Inside turning radius	9 ft 10 in	9 ft 10 in
Outside turning radius	16 ft 7 in	16 ft 7 in
Tires	355/55 D625 foam filled lug	
Controls	All proportional controls	
Drive system	4 wheel drive	

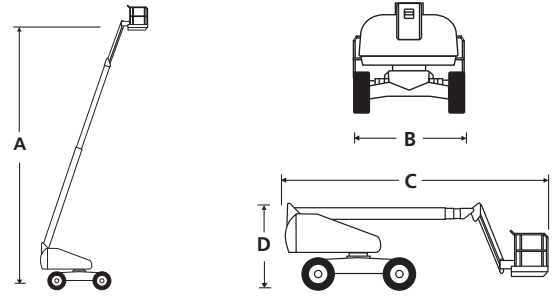
POWER		
Power source	Deutz 2.9L 49hp (36.5kW) Tier 4 Final	
Auxillary power unit	12V DC	12V DC

WEIGHT		
Weight	15,730 lbs	17,260 lbs

WORKING ENVELOPE



400S/460SJ



STANDARD FEATURES

- Snorkel Guard™ secondary guarding system
- 6ft 6in 135° jib (460SJ only)
- Hydraulic platform rotation
- Four wheel drive
- All proportional controls
- Oscillating axle
- Swing-out engine tray
- Power line to platform
- Tilt alarm & cut-out
- Motion alarm
- Hour meter & on-board diagnostics display
- Horn
- Flashing amber light
- DC emergency operation
- Tri-entry platform
- 2 year parts & labor, 5 year structural warranty
- ANSI compliant

OPTIONS

- Special paint colors
- AC generator 110V/240V 2kW
- Non-marking tires
- Dual fuel
- Kubota 24.9hp diesel engine
- Airline to platform
- Aircraft package
- Deluxe aircraft package
- Cold weather package
- Extreme cold weather package
- Extreme environment package
- Light package
- Tow kit
- Glazier package
- 10kW generator package
- 10kW generator/welder package
- Environmental hydraulic oil
- Tool tray



www.berequipment.com

282 Hudson Street
Hackensack, NJ 07601
Tel: 201-342-8020

Email: rentals@berequipment.com