

ARTICULATING BOOM LIFTS

Performance

Platform Height	80 ft	24.38 m
Horizontal Outreach		
800A	53 ft	16.15 m
800AJ	51 ft 10 in.	15.8 m
Up and Over Height	32 ft 1 in.	9.78 m
Swing	360 Degrees Continuous	
Platform, Side Entry	36 x 96 in.	0.91 x 2.44 m
Platform Capacity-Restricted		
800A only	1000 lb*	454 kg
Platform Capacity-Unrestricted	500 lb	227 kg
Platform Rotator	180 Degrees Hydraulic	
Jib Length		
800AJ	6 ft	1.83 m
Jib Range of Articulation		
800AJ	130 Degrees (+70, -60)	
Weight**	34,300 lb	15,558 kg
Max. Ground Bearing Pressure	76 psi	5.3 kg/cm ²
Drive Speed 2WD or 4WD	3.0 mph	4.8 km/h
Gradeability		
2WD	30%	
4WD	45%	
Turning Radius (Inside)		
2WS	12 ft	3.66 m
4WS	7 ft	2.13 m
Turning Radius (Outside)		
2WS	22 ft 6 in.	6.86 m
4WS	14 ft 6 in.	4.42 m

Standard Specifications

Power Source

Dual Fuel Engine		
GM Vortec 3000 MPFI	82 hp	61 kW
Diesel Engine		
Deutz TD2.9L4 Tier 4 Final	67 hp	50 kW
Fuel Tank Capacity	39 gal.	147.6 L

Hydraulic System

• Capacity	40 gal.	151.4 L
• Auxiliary Power	12V DC	

Tires

• Standard	15-625 Wide Lug Tread
• Optional	18 x 625 Foam-Filled Tires

*Except CE rating.

**Certain options or country standards will increase vehicle weight.

Standard Features

- Articulating Jib (800AJ only)
- Dual Rated Capacities (800A only)
- Oscillating Axle
- 180 Degree Hydraulic Platform Rotator
- 110V-AC Receptacle in the Platform
- 5 Degree Tilt Alarm/Indicator Light
- Swing-Out Engine Tray
- 12V-DC Auxiliary Power
- Hourmeter
- Control ADE® System
- Proportional Controls
- Gull-Wing Hoods



- Hydrostatic Drive
- Platform Console Machine Status Light Panel¹
- Lifting/Tie Down Lugs
- Engine Distress Warning
- Rim Protector Lug Tread Tires
- Engine Distress Shutdown — Selectable via Analyzer
- All Motion Alarm

1. Provides indicator lights at platform control console for system distress, 5 degree tilt light, and foot switch status.

Accessories & Options

- Platform: 36 x 72 in. (0.91 x 1.83 m)
- Operator Tool Tray
- Fall Arrest Platform, Rear Entry²: 30 x 72 in. (0.76 x 1.83 m)
- Mesh to Top Rail Bolt-on Aluminum 6 ft/8 ft
- Inward Self-Closing Swinging Gate
- Soft Touch System: 6 ft/8 ft
- 43.5 lb (19.7 kg) Propane Tank
- Cold Weather Start Kit (GM)³
- Cold Weather Start Kit (Deutz)³
- Hostile Environment Kit⁴
- Light Package⁵
- Platform Worklights
- Flashing Amber Beacon
- Arctic Package⁶
- SkyAir®
- SkyWelder®
- Pipe Rack®
- SkyGlazier®
- SkyCutter® and SkyAir® Package
- SkyWelder®/SkyCutter®/SkyAir® Combination
- SkyPower® Package — 7500 Watt Generator, power cable to platform, 1/2 in. Air Line to Platform

2. Foam-filled tires required.

3. Includes engine block heater (GM) or glow plugs (Deutz), battery heater, oil tank heater.

4. Includes console cover, boom wipers and cylinder bellows.

5. Includes head and tail lights, and platform worklights.

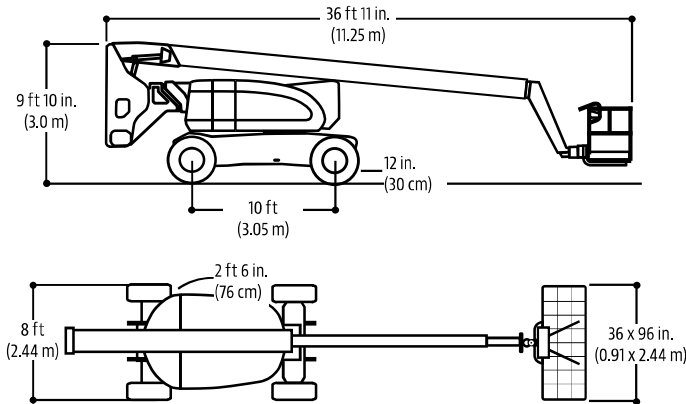
6. Includes arctic hydraulic hoses (drive and steer only) and main boom cable, extreme cold engine oil, fuel conditioner, engine block heater, battery blanket, glow plugs, hydraulic tank heater, and oversized footswitch. Arctic oil priced separately.

ARTICULATING BOOM LIFTS

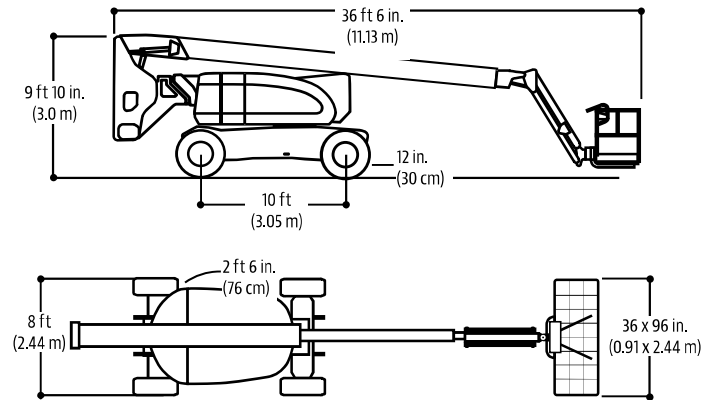
Dimensions

All dimensions are approximate.

800A

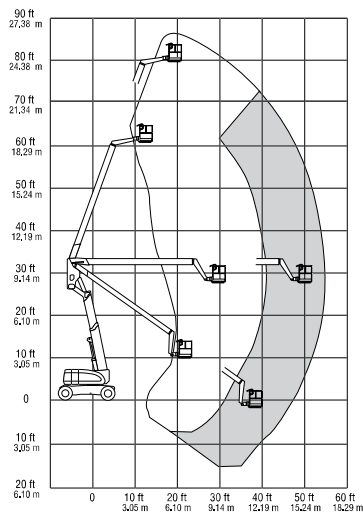


800AJ

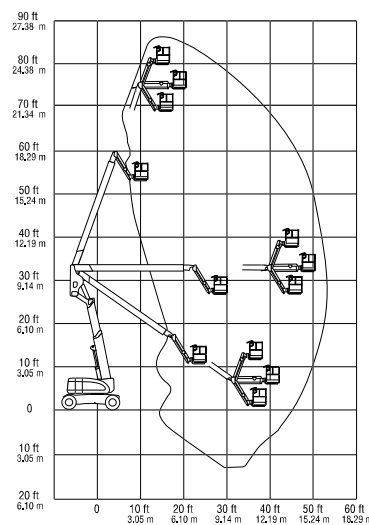


Reach Dimensions

800A



800AJ



282 Hudson Street
Hackensack NJ 07601

201-342-8020

www.berequipment.com

AB80J/AB85J

ARTICULATED BOOM LIFTS



- The ultimate diesel articulated booms
- Excellent aerial maneuverability with "up & over" capabilities
- Powerful 4 wheel drive and 4 wheel steer
- Smooth, precise, easy to use controls
- Simple to maintain and service

BOLAND EQUIPMENT
RENTALS

201-342-8020

www.berequipment.com

ARTICULATED BOOM LIFTS

AB80J/AB85J

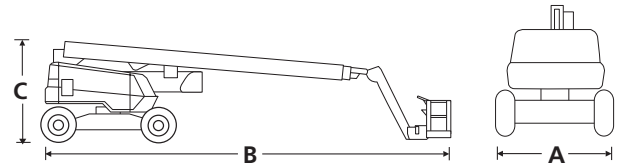
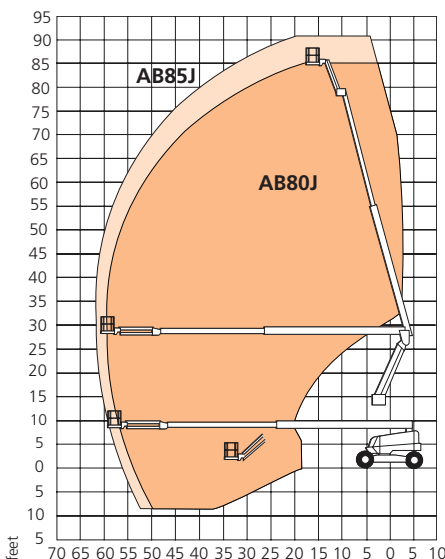
DIMENSIONS	AB80J	AB85J
Max. working height	85 ft 11 in	90 ft 6 in
Max. platform height	79 ft 11 in	84 ft 6 in
Max. horizontal reach	59 ft 5 in	61 ft 11 in
Clearance height at max. outreach	27 ft 11 in	27 ft 11 in
Platform size	8 ft x 3 ft	8 ft x 3 ft
Overall width (A)	8 ft 6 in	8 ft 6 in
Overall length (B)	32 ft 2 in	41 ft 2 in
Stowed height (C)	9 ft 10 in	9 ft 10 in
Ground clearance	13 in	13 in

PERFORMANCE	AB80J	AB85J
Platform capacity (SWL)	500 lbs	500 lbs
Max. wind speed	28 mph	28 mph
Max. drive height	79 ft 11 in	84 ft 6 in
Max. drive speed (stowed)	3.0 mph	3.0 mph
Max. drive speed (elevated)	0.6 mph	0.6 mph
Jib length	5 ft	6 ft 6 in
Jib arc	140°	135°
Jib rotation	n/a	140° side to side
Platform rotation	150°	150°
Superstructure rotation (continuous)	360°	360°
Tailswing	35 in	35 in
Raise/lower time	240/240 seconds	240/240 seconds
Gradeability	30%	30%
Inside turning radius	7 ft 10 in	7 ft 10 in
Outside turning radius	15 ft 5 in	15 ft 5 in
Tires	15 x 625 foam filled lug	
Controls	proportional joystick	
Drive system	4 wheel drive	

POWER	AB80J	AB85J
Power source	Kubota V2403 65hp diesel - Tier 4 Final	

WEIGHT	AB80J	AB85J
Weight	36,800 lbs	38,580 lbs

WORKING ENVELOPE



STANDARD FEATURES

- Snorkel Guard™ secondary guarding system
- Hydraulic platform rotation
- Four wheel drive, steer and crab steer
- Foam filled lug tires
- 360° continuous turntable rotation
- Proportional drive, lift & swing, extend & rotate
- Drive motion alarm
- Flashing amber light
- Horn
- Dual lanyard attachment points
- Power line to platform
- 5° tilt alarm
- 2 year parts & labor, 5 year structural warranty
- ANSI compliant

OPTIONS

- Special paint colors
- Airline to platform
- Non-marking tires
- AC generator 110V/240V 2kW
- Aircraft package
- Deluxe aircraft package
- Cold weather package
- Extreme cold weather package
- Extreme environment package
- Light package
- Tow kit
- Glazier package
- Utility package
- 12kW generator package
- 12kW generator/welder package
- Dual fuel
- Environmental hydraulic oil
- Tool tray



www.berequipment.com
 282 Hudson Street
 Hackensack, NJ 07601
 Tel: 1 (785) 989-3000

Email: rentals@berequipment.com