

AB80J/AB85J

ARTICULATED BOOM LIFTS



- The ultimate diesel articulated booms
- Excellent aerial maneuverability with "up & over" capabilities
- Powerful 4 wheel drive and 4 wheel steer
- Smooth, precise, easy to use controls
- Simple to maintain and service

BOLAND EQUIPMENT
RENTALS

201-342-8020

www.berequipment.com

ARTICULATED BOOM LIFTS

AB80J/AB85J

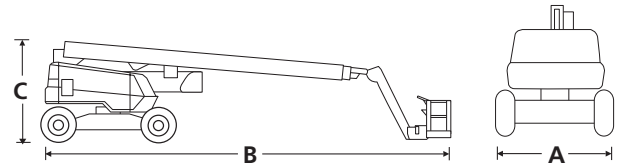
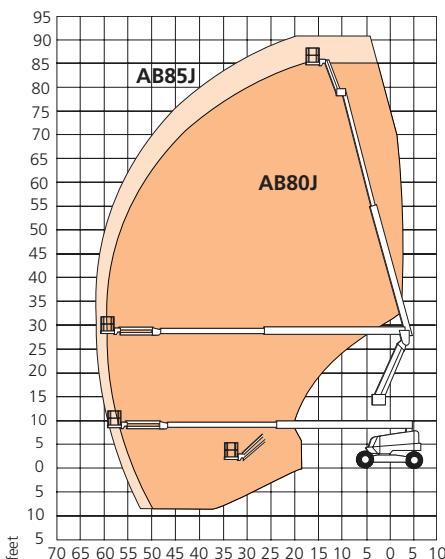
DIMENSIONS	AB80J	AB85J
Max. working height	85 ft 11 in	90 ft 6 in
Max. platform height	79 ft 11 in	84 ft 6 in
Max. horizontal reach	59 ft 5 in	61 ft 11 in
Clearance height at max. outreach	27 ft 11 in	27 ft 11 in
Platform size	8 ft x 3 ft	8 ft x 3 ft
Overall width (A)	8 ft 6 in	8 ft 6 in
Overall length (B)	32 ft 2 in	41 ft 2 in
Stowed height (C)	9 ft 10 in	9 ft 10 in
Ground clearance	13 in	13 in

PERFORMANCE	AB80J	AB85J
Platform capacity (SWL)	500 lbs	500 lbs
Max. wind speed	28 mph	28 mph
Max. drive height	79 ft 11 in	84 ft 6 in
Max. drive speed (stowed)	3.0 mph	3.0 mph
Max. drive speed (elevated)	0.6 mph	0.6 mph
Jib length	5 ft	6 ft 6 in
Jib arc	140°	135°
Jib rotation	n/a	140° side to side
Platform rotation	150°	150°
Superstructure rotation (continuous)	360°	360°
Tailswing	35 in	35 in
Raise/lower time	240/240 seconds	240/240 seconds
Gradeability	30%	30%
Inside turning radius	7 ft 10 in	7 ft 10 in
Outside turning radius	15 ft 5 in	15 ft 5 in
Tires	15 x 625 foam filled lug	
Controls	proportional joystick	
Drive system	4 wheel drive	

POWER	AB80J	AB85J
Power source	Kubota V2403 65hp diesel - Tier 4 Final	

WEIGHT	AB80J	AB85J
Weight	36,800 lbs	38,580 lbs

WORKING ENVELOPE



STANDARD FEATURES

- Snorkel Guard™ secondary guarding system
- Hydraulic platform rotation
- Four wheel drive, steer and crab steer
- Foam filled lug tires
- 360° continuous turntable rotation
- Proportional drive, lift & swing, extend & rotate
- Drive motion alarm
- Flashing amber light
- Horn
- Dual lanyard attachment points
- Power line to platform
- 5° tilt alarm
- 2 year parts & labor, 5 year structural warranty
- ANSI compliant

OPTIONS

- Special paint colors
- Airline to platform
- Non-marking tires
- AC generator 110V/240V 2kW
- Aircraft package
- Deluxe aircraft package
- Cold weather package
- Extreme cold weather package
- Extreme environment package
- Light package
- Tow kit
- Glazier package
- Utility package
- 12kW generator package
- 12kW generator/welder package
- Dual fuel
- Environmental hydraulic oil
- Tool tray



www.berequipment.com
 282 Hudson Street
 Hackensack, NJ 07601
 Tel: 1 (785) 989-3000

Email: rentals@berequipment.com