

Genie® S®-65 XC™ & S-65 TraX™



Specifications

Models	S-65 XC & S-65 TraX
Working height max. ⁽¹⁾	21.81 m
Platform height max.	19.81 m
Horizontal reach max.	16.51 m
Below ground reach	2.65 m
A Platform length (8 ft/6 ft)	0.91 m/0.76 m
B Platform width (8 ft/6 ft)	2.44 m/1.83 m
C Height - stowed (tires)	2.81 m
C Height - stowed (TraX)	2.81 m
D Length - stowed (tires)	9.76 m
D Length - stowed (TraX)	9.76 m
D Length - storage/transport (jib tucked under)	7.80 m
E Width (tires)	2.49 m
E Width (TraX)	2.58 m
F Wheelbase	2.49 m
G Ground clearance - center (tires)	0.41 m
G Ground clearance - center (TraX)	0.41 m
H Height under counterweight	1.17 m

Productivity

Lift capacity max. - unrestricted	300 kg
Lift capacity max. - restricted	454 kg
Number of Platform Occupants (restricted/unrestricted)	3/2
Platform rotation	160°
Jib length	1.52 m
Vertical jib rotation (up/down)	133°
Turntable rotation	360°
Turntable tailswing	1.41 m
Drive speed - stowed (tires)	4.8 km/h
Drive speed - stowed (TraX)	3.7 km/h
Drive speed - raised (tires)	0.3 m/s
Drive speed - raised (TraX)	0.2 m/s
Gradeability - stowed ⁽²⁾	45%
Tilt sensor activation (front to back/side to side)	7° / 5°
Turning radius - inside/outside (tires)	2.40 m/5.50 m
Turning radius - inside/outside (TraX)	3.48 m/6.50 m
Tires	355/55D625
Track system - 4 points	TraX

Power

Power	Diesel
Hydraulic tank capacity	151 L
Fuel tank capacity	132 L

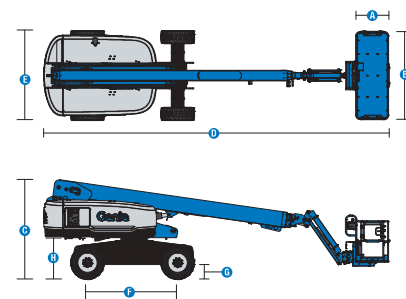
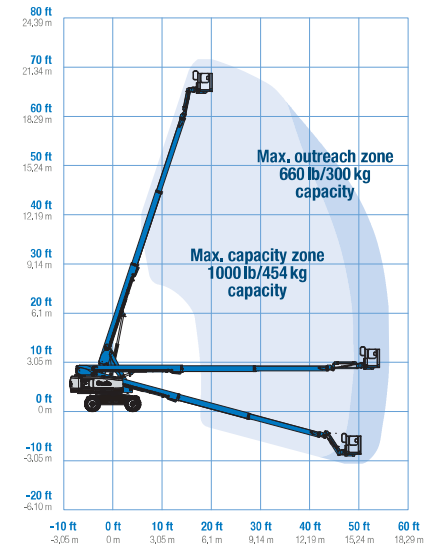
Weight⁽³⁾ and Floor Loading⁽⁴⁾

Weight (tires)	11,412 kg
Weight (TraX)	13,154 kg
Tire contact pressure	620 kPa
Track contact pressure	170 kPa
Occupied floor pressure (tires)	14.55 kPa
Occupied floor pressure (TraX)	13.66 kPa

Sound and Vibration Levels

Sound Pressure level (ground workstation)	85 dBA
Sound Pressure level (platform workstation)	75 dBA
Vibrations	< 2.5 m/s ²

Range of motion S-65 XC/S-65 TraX



Genie® S®-65 XC™ & S-65 TraX™

SKU: Standard Model

- S-65 XC, 4WD*

* Build to Order

Option availability		S	S+	BtO
Power	48 hp, 36 kW, Deutz D2011, Diesel, T4i/Stage IIIA			✓
	Diesel catalytic scrubber muffler (T4i/Stage IIIA/CN III)			○
	LPS Fire protection rating			○
	Positive air shutdown system			○
	Anti-restart engine protection			✓
	Auto engine fault shutdown			✓
	In cylinder glow plug (diesel only)			✓
	Platform	6ft/1.83m dual-entry platform with side swing gate		
8ft/2.44m tri-entry platform with side swing gate				✓
Thumb rocker steering				✓
Air line to platform				○
Control box covers				○
Lift Guard Full Mesh panels				○
Lift Guard Half Mesh panels				○
Light Package: drive and work lights				○
Platform auxiliary top rail				○
Lift Power 3kW AC Generator, 110V/60Hz				○
Lift Power 3kW AC Generator, 220V/50Hz				○
660lb/300kg & 1000lb/454kg dual load capacity with automatic envelope control				✓
Drive enable system				✓
Horn				✓
Lift Guard Contact Alarm				✓
Lift Tools Work Tray				✓
Platform load sense system				✓
Proportional controls				✓
Self-leveling platform			✓	
Chassis	Lift Connect Telematics			○
	Telematics-ready			✓
	Lift Connect with Access Manager upgrade			○
	Eco32 biodegradable hydraulic oil			○
	Rough terrain, foam-filled tires			✓
	Rough terrain, foam-filled, non-marking tires			○
	TraX quadra track drive system			○
	Deluxe hostile environment kit			○
	Hostile environment kit			○
	Chassis tilt lift and drive function cut-out			○
	2 speed wheel motors			✓
	Active oscillating axle			✓
	Alarm package: includes flashing beacon and travel alarm			✓
	Chassis tilt drive function cut-out			✓
	Descent, tilt and motion alarm			✓
	Dual battery system			✓
Hour meter			✓	
Hydraulic oil cooler			✓	
Positive traction drive			✓	
Tech Pro Link connector			✓	

- S Standard
- S+ Standard +
- BtO Build to Order
- ✓ Standard Features
- Options



Xtra Capacity



Rugged Terrainability



Lift Power



Genie Genuine Accessories⁽¹⁾

- Lift Tools Productivity Tools
- Tech Pro Link Handheld Device

(1) More accessories available from Genie Genuine Parts.



Product specifications are subject to change without notice or obligation. Photographs and/or drawings herein are for illustrative purposes only. Refer to the appropriate Operator's Manual for instructions on proper equipment use. Failure to follow instructions in the Operator's Manual may result in serious injury or death. The only warranty applicable to our equipment is the standard written warranty applicable to the particular product and sale and we make no other warranty, express or implied. Products and services listed may be trademarks, service marks or trade names of Terex Corporation and/or their subsidiaries in the USA and many other countries. Terex, Genie, Quality By Design, Xtra Capacity, Lift Power, Lift Guard, Lift Tools, Lift Connect and Tech Pro Link are registered trademarks of Terex Corporation or its subsidiaries.

600S/660SJ

MID-SIZE TELESCOPIC BOOM LIFTS



- Rugged rough terrain telescopic boom lifts
- Powerful 4 wheel drive and oscillating axle
- Ultra-tight turning radius
- Simple to operate and easy to maintain
- Excellent working range and 6' jib for maximum versatility (660SJ Only)

BOLAND EQUIPMENT RENTALS
201-342-8020
www.berequipment.com

MID-SIZE TELESCOPIC BOOM LIFTS

600S/660SJ

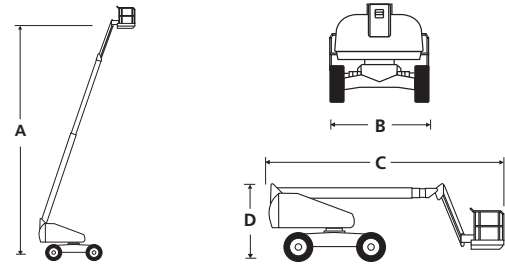
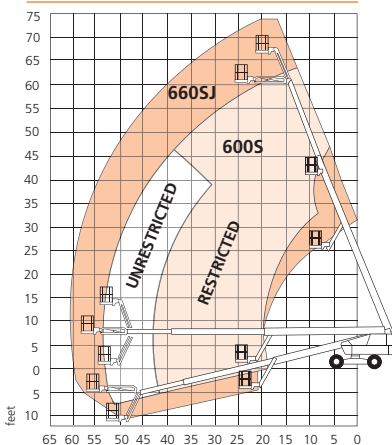
DIMENSIONS	600S	660SJ
Max. working height	66 ft	72 ft
Max. platform height (A)	60 ft	66 ft
Max. horizontal reach	52 ft 7 in	59 ft 1 in
Platform size	8 ft x 3 ft	8 ft x 3 ft
Transport width	7 ft 4 in	7 ft 4 in
Overall width (B)	8 ft 1 in	8 ft 1 in
Overall length (C)	30 ft 1 in	34 ft 2 in
Transport length	30 ft 1 in	28 ft
Stowed height (D)	8 ft 3 in	8 ft 3 in
Transport height	8 ft 3 in	10 ft 1 in
Ground clearance	13.5 in	13.5 in

PERFORMANCE	600S	660SJ
Platform capacity (SWL) unrestricted	600 lbs	600 lbs
Platform capacity (SWL) restricted	1,000 lbs	n/a
Max. drive height	60 ft	66 ft
Max. wind speed	28 mph	28 mph
Max. drive speed (stowed)	3.5 mph	3.5 mph
Max. drive speed (elevated)	0.6 mph	0.6 mph
Jib length	n/a	6 ft 6 in
Jib working arc	n/a	135°
Platform rotation	150°	150°
Superstructure rotation (continuous)	360°	360°
Raise/lower time	50/50 sec	50/50 sec
Tailswing	47 in	47 in
Gradeability	45%	45%
Inside turning radius	10 ft 1 in	10 ft 1 in
Outside turning radius	17 ft 1 in	17 ft 1 in
Tires	355/55 D625 foam filled lug	
Controls	Proportional drive, raise, slew, extend, jib and platform rotate	
Drive system	4 wheel drive	

POWER	600S	660SJ
Power source	Cummins 65hp (48.5kW) turbo diesel - Tier 4 Final	
Auxillary power unit	12V DC	12V DC

WEIGHT	600S	660SJ
Weight	24,640 lbs	27,300 lbs

WORKING ENVELOPE



STANDARD FEATURES

- Snorkel Guard™ secondary guarding system
- 6ft 6in 135° jib (660SJ only)
- Hydraulic platform rotation
- Oscillating axle (8" of oscillation)
- Four wheel drive
- Swing-out engine tray
- All proportional controls
- Power line to platform
- Tilt alarm & cut out
- Motion alarm
- Hour meter & on-board diagnostics display
- Horn
- DC emergency operation
- Tri-entry platform
- Flashing amber light
- 2 year parts & labor, 5 year structural warranty
- ANSI compliant

OPTIONS

- Special paint colors
- Airline to platform
- AC generator 110V/220V 2kW
- Non-marking tires
- Dual fuel
- Aircraft package
- Deluxe aircraft package
- Cold weather package
- Extreme cold weather package
- Extreme environment package
- Tow kit
- Glazier package
- Light package
- 10kW generator package
- 10kW generator/welder package
- Environmental hydraulic oil
- Pressure washer package
- Tool tray



282 Hudson Street
 Hackensack, NJ 07601
 Tel: 201-342-8020
 Email: rentals@berequipment.com
 www.berequipment.com