

# Mandated Reporting Reform:

## *Implementing Assembly Bill (AB) 2085*



LA COUNTY MANDATED  
**SUPPORTING** INITIATIVE



**Los Angeles County**  
**Office of Education**

# Moving Upstream

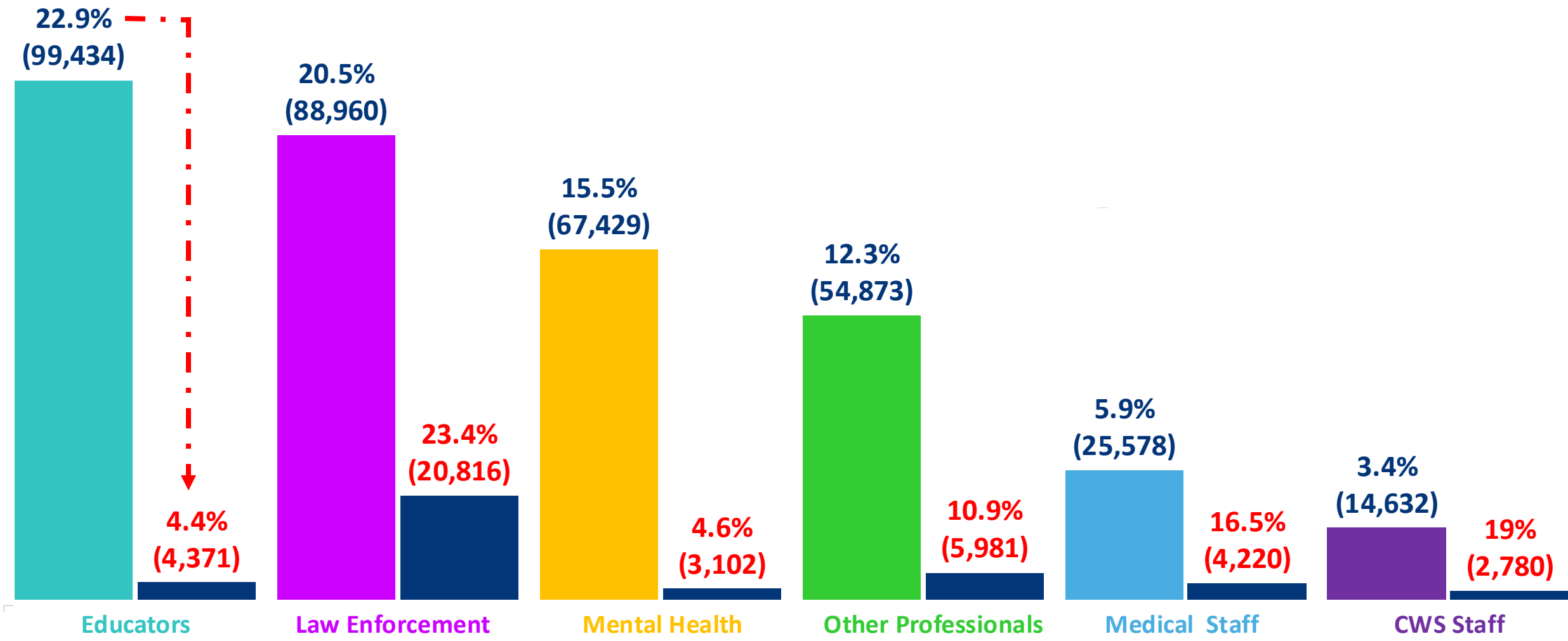
- Increased focus on prevention at state, federal and local levels
  - Family First Prevention Services Act (FFPSA)
  - Community Schools Initiative
- Reduced reliance on child welfare system is a facilitator of child and family well-being
  - Narrowing of California's definition of general neglect

## *Assembly Bill 2085*

- Mandated reporting form occurring across the nation and state
- State Task Force and LA County-led efforts



# Reports Made & Substantiations by Mandated Reporter Type (2023)





Reactive by design.

Not proven to prevent child abuse and neglect.



Disrupts trust.

Creates a chilling effect on help-seeking, which increases risk.



Driver of racial disproportionality in the child welfare system.

Manifestation of the criminalization of poverty.



System pits best interests of mandated reporters and their organizations ***against*** the families we serve



Mandated Reporters feel – and are – inadequately prepared and supported.

Most of their allegations are not substantiated.



Reporting decisions often influenced by factors that are distinct from child safety concerns.

Results in overreporting and underreporting.

# Assembly Bill (AB) 2085



1. Child's parent/caregiver negligently failed to provide adequate food, clothing, shelter, medical care, or supervision
2. No physical injury to the child has occurred

**AND**

**(3) Child is at substantial risk of suffering serious physical harm or serious illness**

**(4) Parent's economic disadvantage is NOT general neglect**

# Legislative Intent: Assembly Bill (AB) 2085

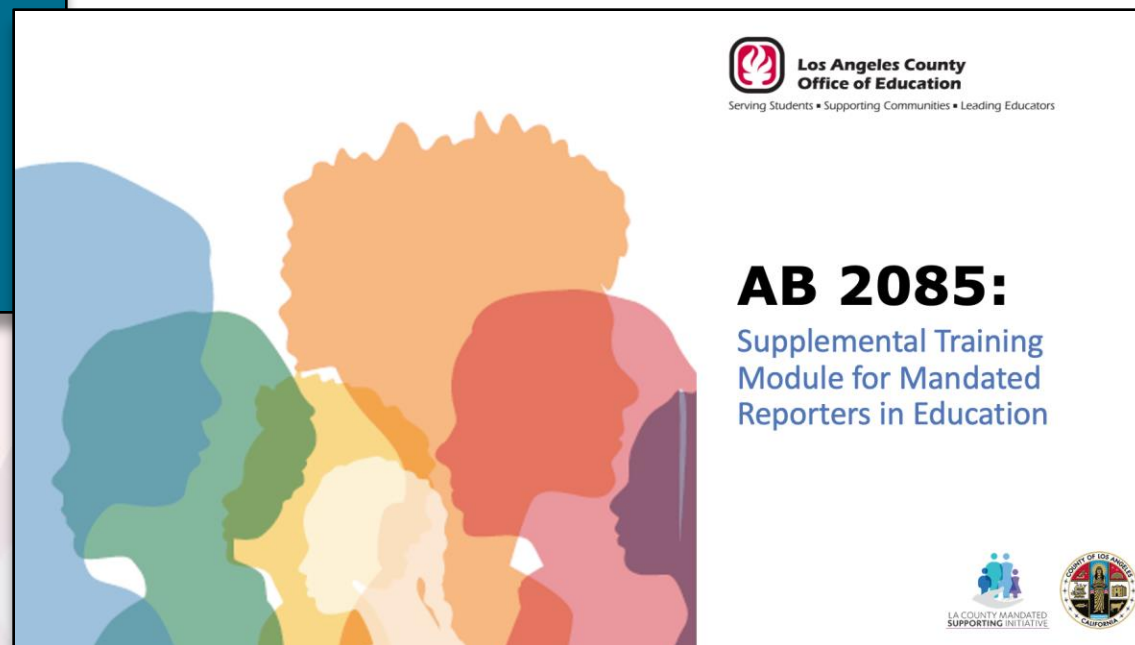
Legislative intent is to:

- Rectify conflation of poverty with general neglect
- Eliminate overreporting due to bias based on race and class
- Address racial disproportionality
- Decrease the strain on the child welfare system

**Is not only the law, but presents tremendous opportunity to further whole family approaches in education!**



# AB 2085 Training Supplement E-Learning and Training Supplement Module for Mandated Reporters in Education



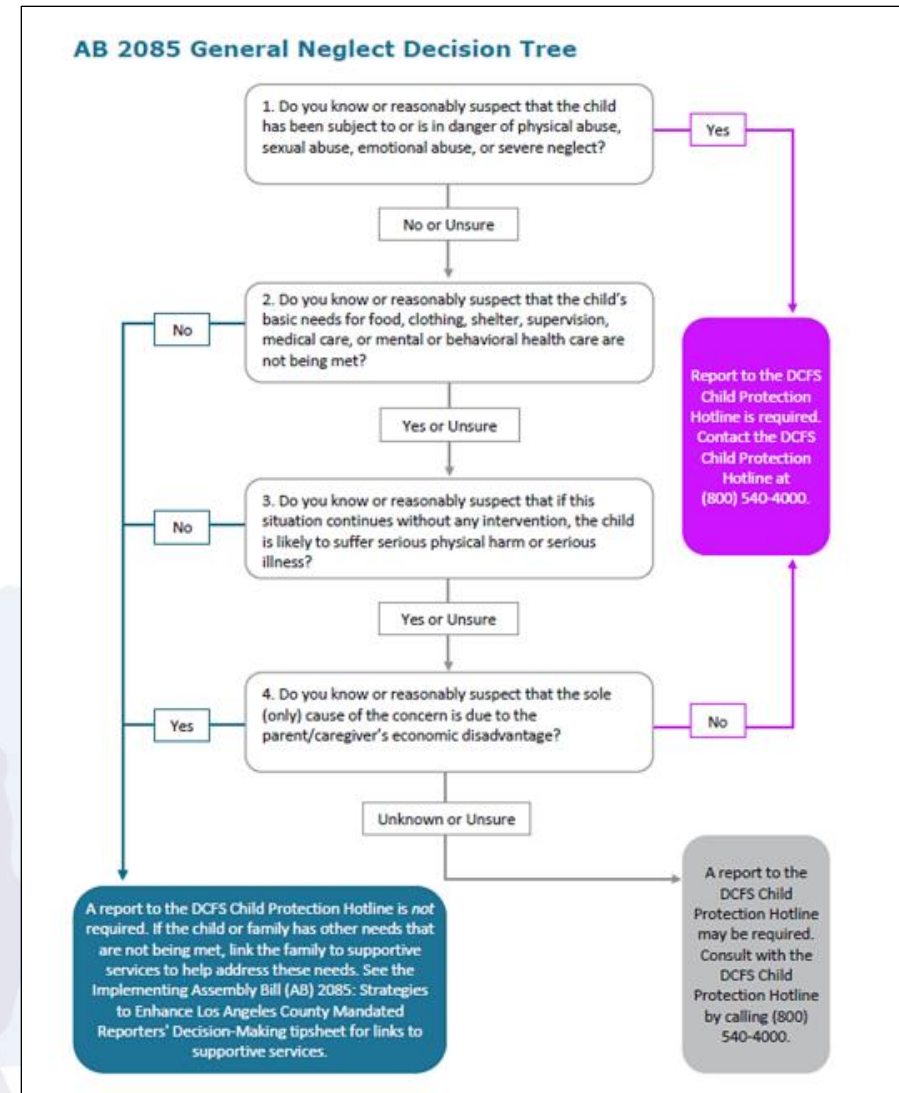
# AB 2085 Decision Support Tools

## Five-step decision support process

1. Clarify
2. Consider
3. Consult
4. Complete
5. Decide

## General Neglect Decision Tree

- “Low Tech”
- Recommendations:
  1. Make a report to DCFS
  2. Consult with DCFS
  3. Link the family to supportive services if they are in need





General Neglect Decision Tree and other tools available @  
[SupportingFamilies.lacounty.gov](https://SupportingFamilies.lacounty.gov)

*Dr. Tamara N. Hunter*  
[msi@dcfs.lacounty.gov](mailto:msi@dcfs.lacounty.gov)

LA County Office of Education  
[laoe.edu/mandatedsupporting](https://laoe.edu/mandatedsupporting)

*Alicia Garoupa, LCSW*  
[garoupa\\_alicia@laoe.edu](mailto:garoupa_alicia@laoe.edu)



LA COUNTY MANDATED  
**SUPPORTING** INITIATIVE



**Los Angeles County**  
**Office of Education**

# JOIN ACCBE - GET INVOLVED

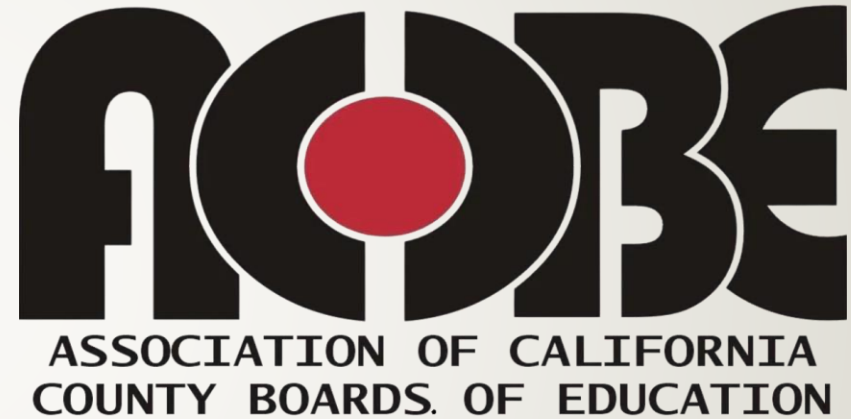
---

- **Become a Member:** Support Your Board Joining ACCBE
- **Participate in Webinars and Workshops:** Attend upcoming workshops and webinars on issues that matter for your county and students
- **Contribute to the Conversation:** Participate in discussions and surveys to help refine ACCBE's governance and member supports.
- **Join a Committee:** Get involved by joining a committee focused on planning, advocacy, or member-to-member support , and play an active role in shaping the future of ACCBE.
- **Join the ACCBE Mentor Program:** Join as a Mentor or Mentee

# HERE IS OUR CONTACT INFORMATION

---

- EMAIL: [info@accbe.org](mailto:info@accbe.org)
- WEBSITE: [www.accbe.org](http://www.accbe.org)
- ACCBE President: Bina Lefkovitz
- [blefkovitz@accbe.org](mailto:blefkovitz@accbe.org)
- 916 213 9679 cell



## THANK YOU