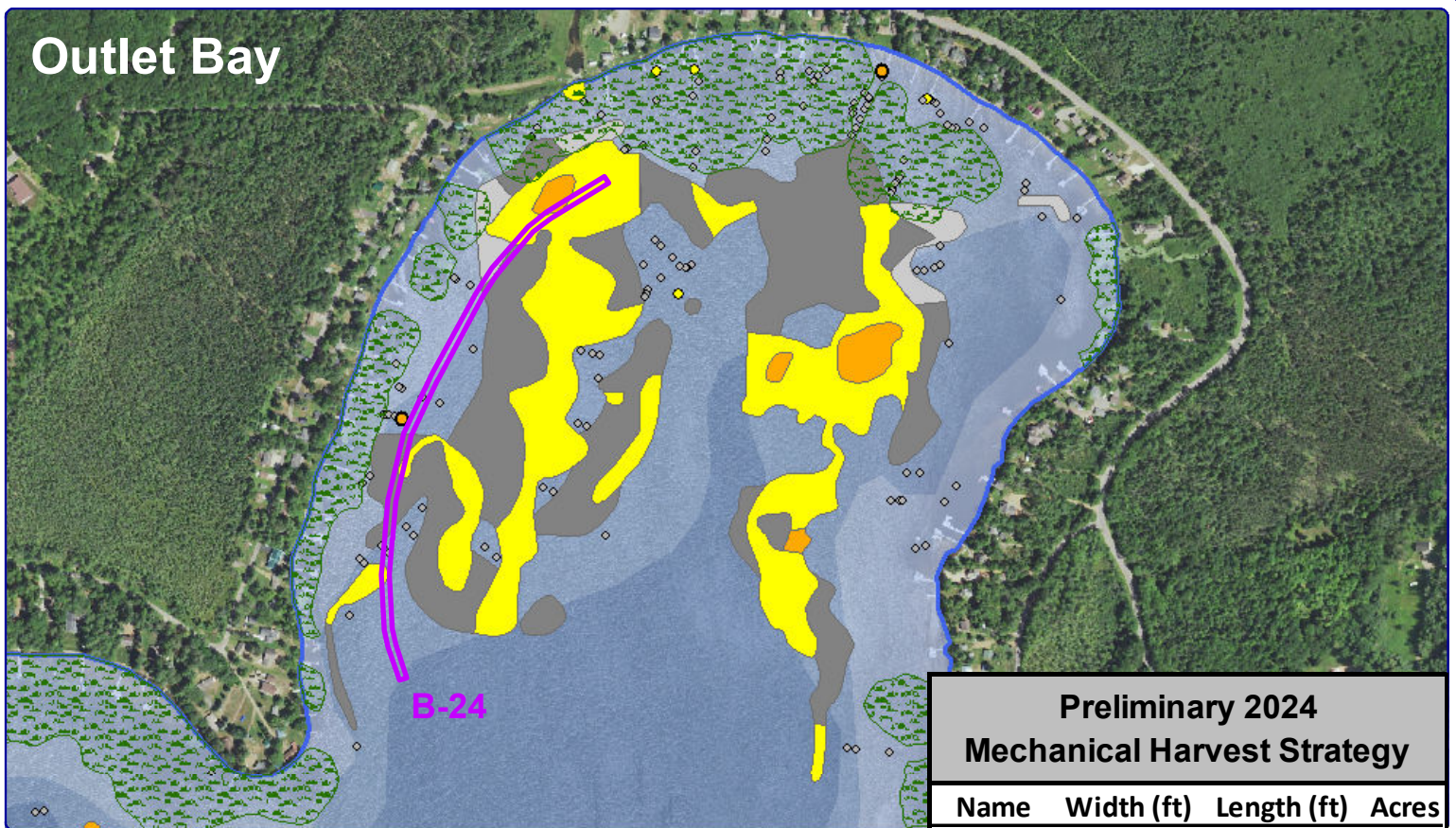
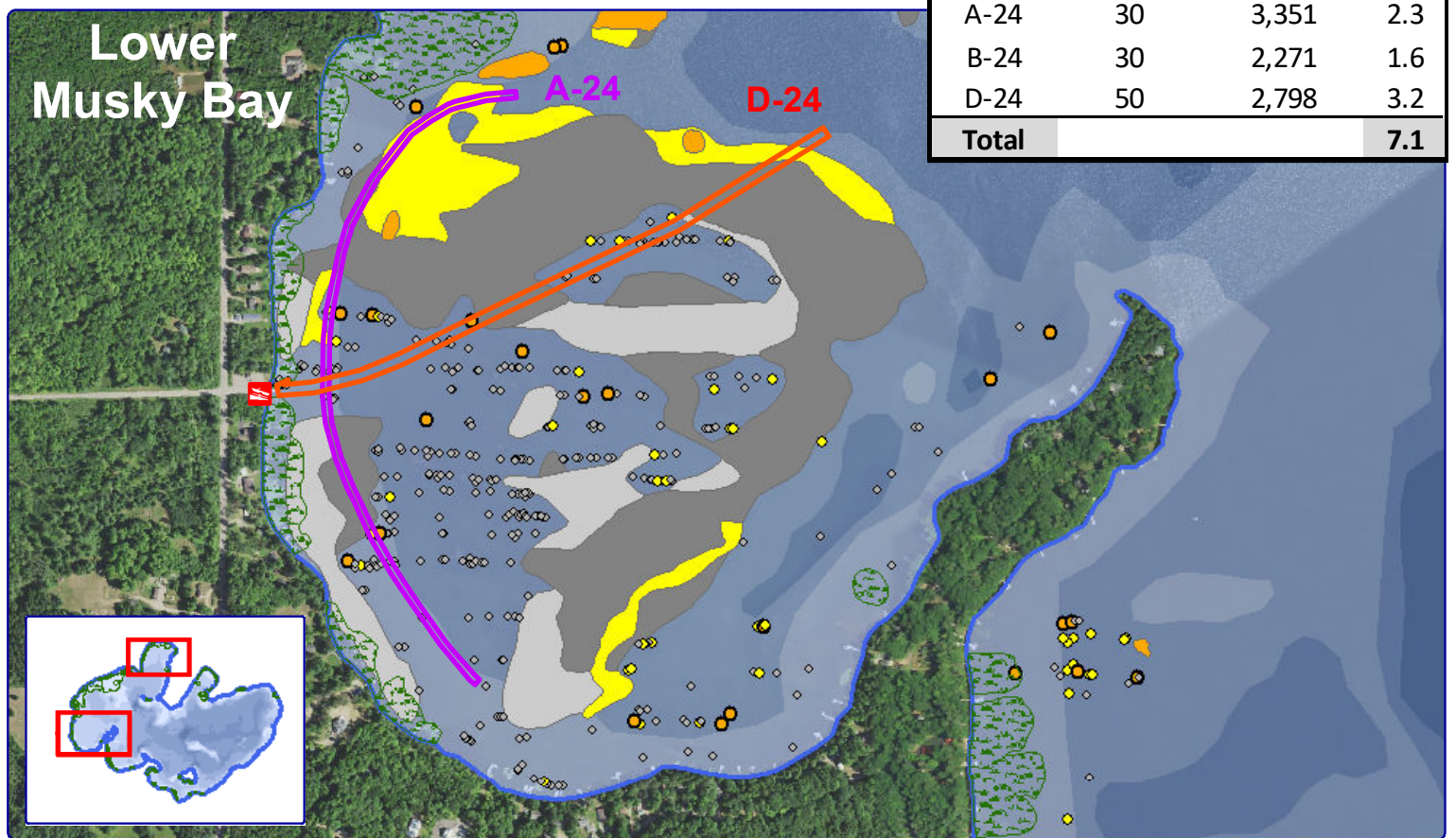


Outlet Bay



Lower Musky Bay



Onterra LLC
Lake Management Planning
815 Prosper Rd
De Pere, WI 54115
920.338.8860
www.onterra-eco.com

Sources
Roads and Hydro: WDNR
Bathymetry: Digitized by Onterra
Aquatic Plants: Onterra, 2023
Map Date: April 19, 2024 - RMF

Legend

- EWM Survey Results (August 28-31, 2023)**
- Highly Scattered
 - Scattered
 - Dominant
 - Highly Dominant
 - Single or Few Plants
 - Clump of Plants
 - Small Plant Colony
 - Surface Matting (None)

- Emergent Plant Community (Mapped in 2023)
- Mechanical Harvest Lane (30 ft wide)
- Mechanical Harvest Lane (50 ft wide)

Pelican Lake
Oneida County, Wisconsin

Prelim 2024 Mechanical Harvest Strategy