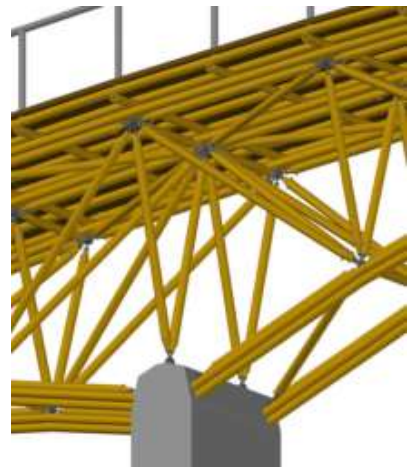
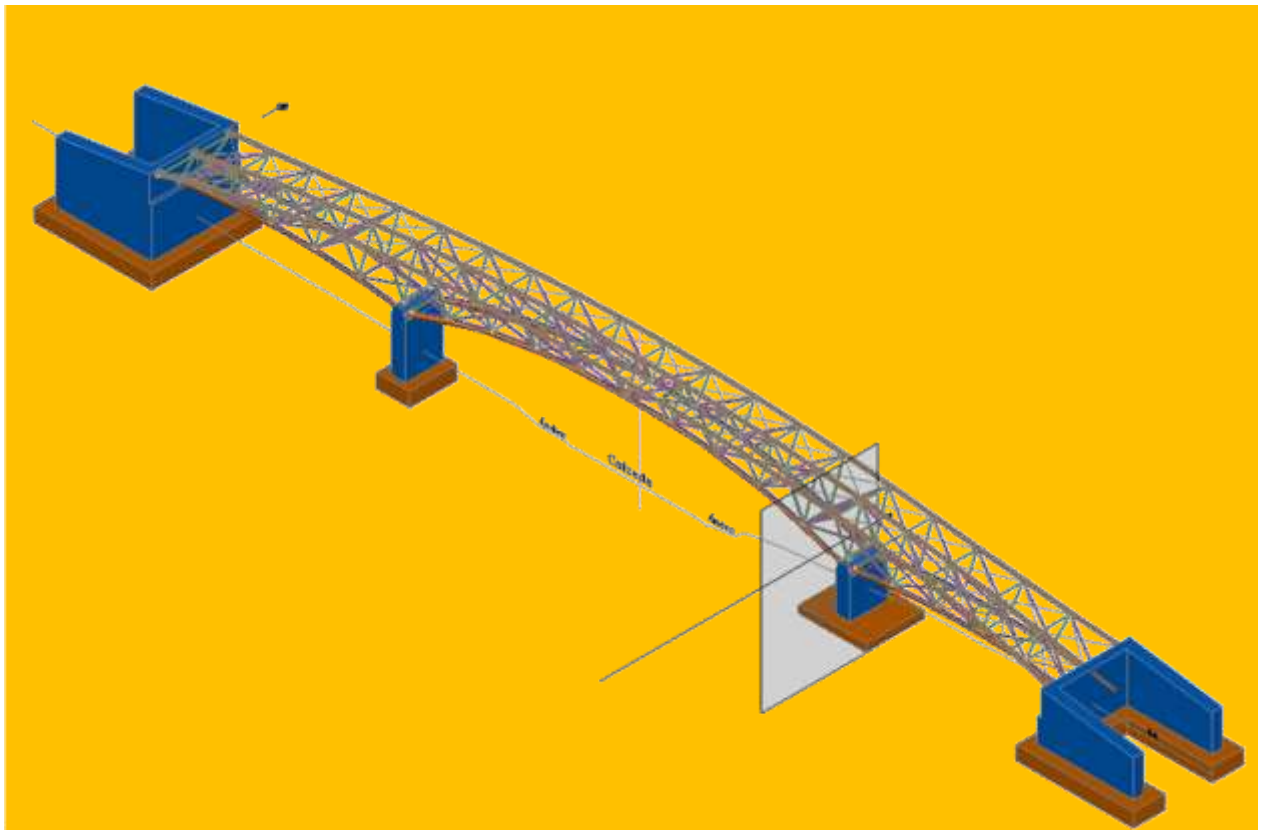
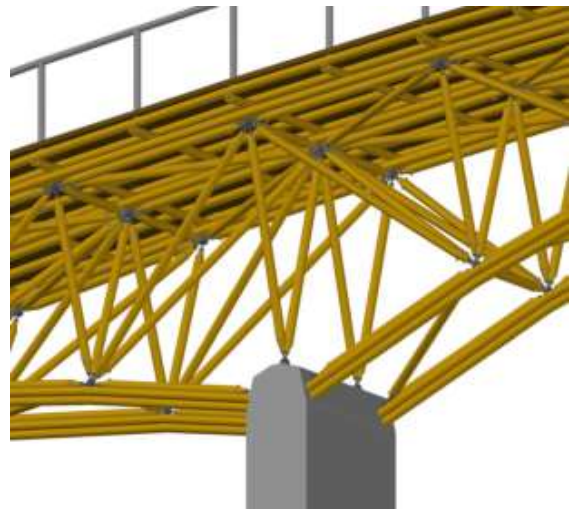


GUADUA SECOL S.A.S

GUADUASECOL S.A.S. is a company incorporated in November 2015, dedicated to the commercialization of bamboo, with preserved treatment and dried in camera. It has experienced professionals committed to the promotion, innovation and industrial development of bamboo. Our company conducts research and development of different designs of structures in bamboo, which are at the forefront of the new challenges present for innovation and sustainable environmental development of the Bamboo.



The pencil tip project was born from the need to build a bamboo pedestrian bridge with a polyhedral design, similar to some already built in wood such as the “*Thalkirchen bridge*” in Germany, which uses the “mero” spheres as a union of the elements and at the same time concentrator of strenghts. The original design was subjected to tensile and compression laboratory tests to obtain its mechanical properties and ensure that they withstand the loads present in any structure. As a secondary use it can be used in roofs, kiosks, etc.



GUADUA SECOL S.A.S



PROJECT: TAQUARA PORTER'S LODGE
AREA: 200 m2



- The project of the construction company "Hitos Urbanos" seeks to combine the modern style of the country houses with the coffee cultural landscape of the region, using the innovative design of tip pencil cones in bamboo.



