

WELCOME, BEYONDSM

Celebrity **X** Cruises®

CELEBRITY BEYOND

MORE SPACE. MORE LUXURY. MORE CONNECTED.

Welcome to a place where you can experience all the things you've been missing for so long. Only now, those things are even better than you've imagined. This is a place where the possibilities are as endless as the views. Where you can disconnect entirely while you reconnect with each other—and the world. This place is Celebrity BeyondSM.

The third ship in our revolutionary Edge[®] Series takes our innovative outward-facing design further than ever, creating an even closer connection between you, the sea, and every exciting place on the horizon. Unwind in expanded open-air spaces. Savor fine dining that rivals anything you'd find on land. And discover even more ways to relax and renew.



Celebrity BEYOND
BALLETTA



Tuscan Restaurant



Grand Plaza



Eden



The Spa



ICONIC EDGE SERIES EXPERIENCES

While Celebrity BeyondSM is designed to redefine luxury travel again, it wouldn't be complete without the visionary spaces that make our Edge[®] Series ships destinations in themselves.

Soar above the open sea on the cantilevered Magic Carpet. Surrender to the unexpected pleasures of the Rooftop Garden. Discover the multi-sensory wonders of our ever-evolving Eden. Get a taste of the good life at the Grand Plaza. Discover new ways to look and feel your best at The Spa. All this and more make Celebrity Beyond one of the best new ways to explore the world.



THE CELEBRITY BEYOND DREAM TEAM

To ensure Celebrity BeyondSM would live up to its name, we've not only reunited the architects and designers from our Edge[®] Series, but we've expanded their roles—and their designs will expand the way travel inspires you. Plus, the ship offers them more room to create even more incredible spaces.



KELLY HOPPEN, CBE
AWARD-WINNING, BRITISH DESIGNER

With over 40 years in the design industry and multiple awards to her name, Kelly is one of the most sought-after interior designers in the world. Kelly brought her globally renowned style to The Retreat[®] and all suites on our first Edge Series ships—and now she's reimaged these exclusive spaces along with outdoor venues such as Rooftop Garden and the main pool area.



NATE BERKUS
DESIGNER AND EDGE SERIES TRAVEL AMBASSADOR

As part of an exclusive partnership, design icon Nate Berkus was first brought on board as Design Ambassador for our Edge Series ships. With his global aesthetic and forward-thinking style, Nate was the perfect fit to showcase Celebrity's cutting-edge innovation and breathtaking design, and now he's bringing his distinctive design aesthetic to the new terraced Sunset Bar on Celebrity Beyond.



TOM WRIGHT OF WKK
ARCHITECT AND DESIGNER

World-renowned for his striking creations like the Burj Al Arab Hotel in Dubai, Tom Wright was the clear choice to lead the charge on designing open decks and the Edge Series ships distinctive Magic Carpet[®]. Tom elevates Celebrity Beyond's outdoor spaces, including Sunset Bar, Rooftop Garden, and the main pool area.



SCOTT BUTLER, AIA
AWARD-WINNING, ARCHITECTURAL DESIGNER

Scott and Wilson Butler Architects have been a design partner with Celebrity Cruises[®] since our Celebrity Millennium[®] Series ships. Scott and his firm were also Master Planners in the Solstice[®] Series ships, designing iconic spaces, including the Grand Foyer, the Panoramic Lifts, the Shopping Arcade, and more. Scott brought his talent to our Edge Series ships in The Theatre and Eden.



PATRICIA URQUIOLA
ARCHITECT AND DESIGNER

Patricia studied architecture at the world-renowned Madrid Polytechnic and Milan Polytechnic. Her talents have earned her a long list of international honors and awards, and many of her designs are displayed in some of the most prestigious museums in the world. She created the stunning interior of Eden.



JOUIN MANKU
INTERIOR ARCHITECTS AND DESIGNERS

Travel and transformation are central to Jouin Manku's design. They draw inspiration from a multitude of cultures and merge cutting-edge technology with old-world craftsmanship. On Celebrity Beyond, they've redesigned their original stunning Grand Plaza as well as creating the intimate setting of Le VoyageSM by Daniel Boulud.

SUNSET BAR

The open sea is one of the most rejuvenating places you can be, and we took full advantage of this in creating a redesigned, terraced Sunset Bar that's nearly twice the size as before. The aft location offers amazing wake views, creating the perfect backdrop for the vision of designer to the stars Nate Berkus. That's right—our Edge® Series Travel Ambassador, who needs no introduction, has stepped into the role of designer himself to imagine one of the most anticipated venues on Celebrity BeyondSM.

Working in collaboration with architect Tom Wright of WKK, who's behind many of the engineering feats that made our Edge Series possible, Nate has created an international beach club ambience inspired by the best summer spots around the world, from Mexico and California to Greece and Uruguay.









ROOFTOP GARDEN

What better place could there be to gaze at the sea than float pools that are cantilevered over the open ocean? This feature is one of the highlights of our redesigned Rooftop Garden, which now extends right over the water's edge. The living urban playscape that debuted on our Edge® Series has turned over a whole new leaf on Celebrity BeyondSM, thanks to the vision of award-winning British designer Kelly Hoppen, CBE, and architect Tom Wright, of WKK.

The Rooftop Garden is filled with plenty of other unexpected pleasures, day and night. Settle into new shaded seating areas designed by Kelly Hoppen that are equal parts cozy and chic. Dance the night away as one of our talented bands plays all your favorites live on stage. Challenge someone to a friendly game of giant chess. Or just lie back on one of the pillow-soft loungers and gaze up at the sea of stars above as you glide over the sea below. The sky truly is the limit at Rooftop Garden.



RESORT DECK

The stunningly redesigned main pool area on Celebrity BeyondSM will make you feel like you've arrived at one of the world's best resorts. But what other resort offers views like these? The larger outward-facing pool deck means you never have to take your eyes off the ocean while you replenish your vitamin D levels and restore your sanity in this asymmetrical, terraced oasis. Kelly Hoppen's brand-new design, combined with the creativity of architect Tom Wright, make the main pool the ultimate sun-soaked destination.

Float the day away in the 25-yard lap pool, complete with in-pool loungers. Relax above it all in a signature Edge[®] Series wonder—our two-story, martini glass-shaped hot tubs. Get social with friends under the sun at the new sunken circular seating areas. Hide away in one of our eight newly redesigned Cabanas, now elevated slightly above the pool deck and repositioned to give you an even better perspective.





MAGIC CARPET

No rush can compete with the endless views 13 stories above the sea on our cantilevered Magic Carpet®. First, you might wonder how we made the impossible possible, but then, you'll simply surrender to the feeling of floating across the endless horizon as you drink, dine, or simply relax. But the Magic Carpet isn't just one magical venue—it's several—and each transformation it undergoes brings an entirely new way to experience this amazing place.

GRAND PLAZA

The Grand Plaza is a transformational place that offers a different experience every time you visit. And, on Celebrity BeyondSM, we re-enlisted the creative genius of Jouin Manku who created the original three-story space, inspired by the piazzas of Italy and the invigorating energy of everyone coming together to savor a taste of the good life, to reimagine this wildly popular venue and make it even more unforgettable.

On Celebrity BeyondSM, we made the Grand Plaza even bigger giving it a loftier, airier atmosphere. The added space provides even more intimate seating and allowed us to move the Martini Bar into the center of the venue as a full, circular bar. The iconic chandelier hangs proudly above the new Martini Bar and boasts a new, organic shape and hundreds of individual LED lights that cast an inviting glow at all hours. With everything it has to offer, the Grand Plaza boldly declares that it's the place to see and be seen.



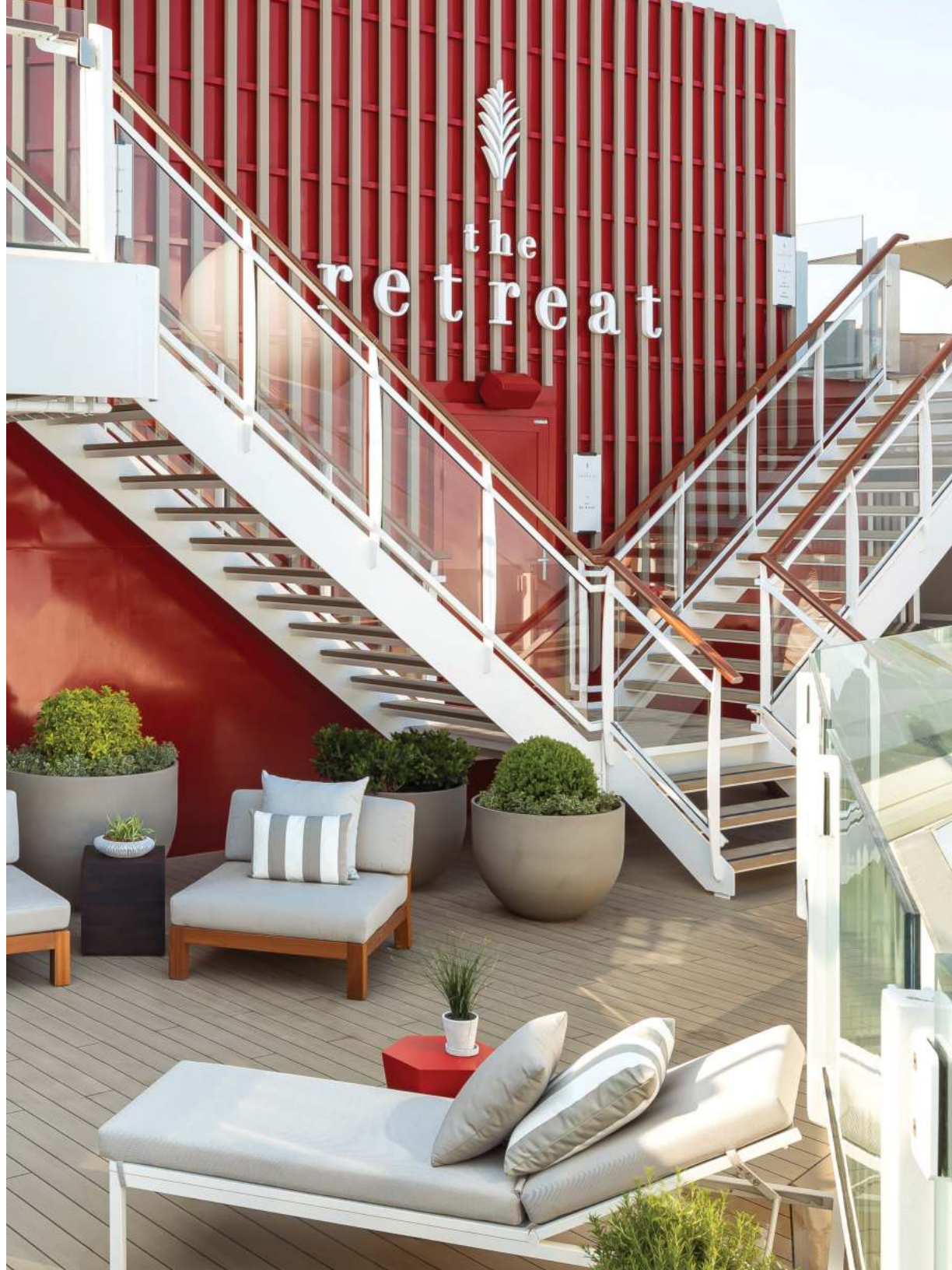


THE RETREAT

A place so exclusive it has no address, The Retreat® is the ultimate luxury vacation experience. Every guest not only enjoys stunning suite accommodations but also private dining, an exclusive lounge and sundeck, and a long lineup of services and amenities. Kelly Hoppen enhances this already unrivaled resort-within-a-resort with stunningly reimagined spaces that are now brought together in one area.



To give you more space to relax in the ocean air, The Retreat Sundeck now offers you two levels of outdoor bliss. Kick back poolside with a cocktail delivered by a dedicated attendant. We've even added a second hot tub, so you have more room for a soothing soak. Escape to a secluded cabana or one of Kelly Hoppen's chic new seating areas with a calming Zen garden vibe. Make new friends over drinks at The Retreat Bar.





luminae

at the retreat®

Your private restaurant, Luminae at The Retreat, features a new design by Kelly Hoppen that's as boldly elegant as the cuisine. And it's been repositioned to the front of the ship with panoramic floor-to-ceiling views as incredible as our Iconic Suites. Explore exclusive menus crafted by our Michelin-starred chef that you won't find anywhere else on board, including signature dishes designed by Daniel Boulud, our Global Culinary Ambassador.



the
retreat®

lounge

Not to be outdone, The Retreat Lounge also boasts an inviting new Kelly Hoppen design and a new location with dramatic floor-to-ceiling views. Take in the ever-changing scenery whenever you stop by this lounge for complimentary drinks, gourmet bites, or simply to unwind. You'll also have access to an exclusive concierge who'll make any arrangements you need—on board or off.



THE RETREAT SUITES

As a guest of The Retreat®, you'll have your choice of stunning suite accommodations, including our two-story Edge Villas with outdoor plunge pools, and our Iconic Suites, the largest in our fleet, featuring views as amazing as the captain's. All our suites on Celebrity BeyondSM feature fresh color palettes and design details by Kelly Hoppen. As always, you'll enjoy a butler, so you never have to lift a finger, along with luxurious amenities like eXhale[®] bedding, king-sized Cashmere[™] mattresses designed exclusively for Celebrity, and plush Frette robes and slippers—just to name a few. And now, every guest in your suite receives premium drinks, premium Wi-Fi, tips, and an onboard credit to use however you choose.* We've thought of every detail, so you don't have to think about a thing.



Iconic Suite



Penthouse Suite

*All guests with an Eligible Booking in The Retreat will receive a Premium Drink Package, an Unlimited Premium Wi-Fi Package, tips included, and an onboard credit ("OBC"). OBC amount varies by length of sailing and will be credited to guests' stateroom folios. OBC has no cash value, is applicable to cruise only, non-transferable, not redeemable for cash, and will expire if not used by 10:00 p.m. on the final night of the cruise. Guests with Wi-Fi packages will receive instructions for Wi-Fi access in their staterooms on the first day of the cruise.

AQUA SKY SUITES

Wellness is so fundamental to our philosophy, we've created a whole new way to nourish your mind, body, and spirit on vacation. Introducing our Aqua Sky Suites. Enjoy floor-to-ceiling ocean views, a private veranda with lounge seating, a king-sized Cashmere™ Mattress with exclusive eXhale® bedding, a custom pillow menu, and plush Frette bathrobes and slippers. Stay refreshed with in-room bottled water service and eco-friendly bath products. Keep up your routine with yoga mats provided for your use on board. Feel like eating in? Get delicious clean cuisine options delivered right to your suite. Plus, your butler will make sure you never have to lift a finger. We've thought of every detail, so you can focus on finding your center.

Aqua Sky Suites are located near The Spa, where you'll enjoy an array of exclusive benefits, including complimentary access to our SEA Thermal Suite, a dedicated Spa Concierge, priority spa reservations, complimentary fitness classes, and onboard credit to use toward your spa treatments. And then to extend your holistic experience even further, you'll have priority access to booking curated wellness experiences in every destination you'll visit. And, beyond all this, you'll also enjoy the exclusive spaces and indulgent services and amenities of The Retreat®. It's everything you need for the blissful escape you deserve.



Aqua Sky Suite designed by Kelly Hoppen



The SEA Thermal Suite at The Spa



AquaClass® stateroom with Infinite Veranda®
designed by Kelly Hoppen



Blu restaurant

AquaClass®

Thoughtful spaces for well-being

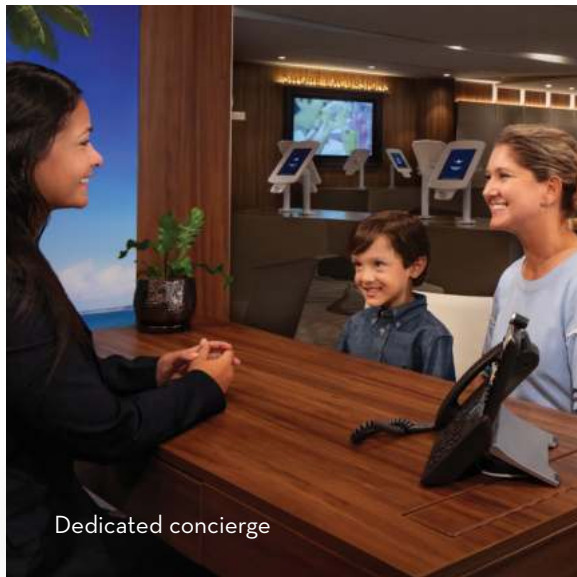
AQUAClass® STATEROOMS

Our newly enhanced AquaClass® stateroom experience is more ahh-inspiring than ever. It starts with your Infinite Veranda® stateroom that erases the boundaries between indoor and outdoor living. Spa-inspired elements are thoughtfully infused throughout, including pillow menus, our exclusive eXhale® bedding, plush cotton robes and slippers, a massaging showerhead, eco-friendly bath products, on-demand wellness programming on your stateroom TV, yoga mats, daily bottled water service, and an enhanced air filtration system—which you'll now find in all our staterooms.

As an AquaClass guest, you'll enjoy a rejuvenating lineup of benefits, including an exclusive welcome reception at The Spa, complimentary access to the SEA Thermal Suite, a dedicated spa concierge, priority spa booking, complimentary fitness classes, and exclusive discounts on spa treatments. You'll also savor clean cuisine in our Blu restaurant, including new menu options focused on a healthier lifestyle. Plus, enjoy priority access to booking curated wellness experiences in each destination you'll visit. You'll never want your AquaClass vacation to end, but you'll be a better version of yourself when it does.

CONCIERGE CLASS STATEROOMS

Our Concierge Class staterooms pair the luxury of your Infinite Veranda® stateroom with an array of services and amenities, from an exclusive welcome aboard Concierge Class lunch—to a dedicated concierge who's always just steps away from your stateroom to help with anything you need.



Dedicated concierge



Concierge Class stateroom with Infinite Veranda.



INFINITE VERANDA STATEROOMS

Celebrity Beyond offers an array of accommodations for every traveler, including the groundbreaking Infinite Veranda® staterooms introduced on Celebrity Edge®, now featuring new color schemes and décor by Kelly Hoppen. These transformational staterooms erase the boundaries between indoor and outdoor living, opening up your entire room to the reinvigorating ocean air with the touch of a button.



A CULINARY JOURNEY FILLED WITH WONDER

What you eat on vacation is almost as important as where you go, and on every Celebrity vacation, we bring both those things together perfectly. The captivating scents and flavors of your dining experience with will transport you to new places—without even leaving your table. On our newest ship, Celebrity BeyondSM, you'll embark on a culinary journey like no other. Featuring 32 food and beverage venues, including eight specialty restaurants and an array of bars and lounges, every experience will excite your palate and leave you wanting more.

Our menus are crafted by Michelin-starred chef, Cornelius Gallagher, and are inspired by the amazing regions we visit around the world. Our Global Culinary Ambassador, world-renowned chef Daniel Boulud, also creates new, exclusive signature dishes for guests of Luminae, his signature restaurant Le VoyageSM by Daniel Boulud, and the Chef's Table experience, along with our top culinary talent on board who prepare the dishes fresh daily using locally sourced ingredients, you'll enjoy the best dining experience at sea. So step aboard—your table awaits.





WE'RE PUTTING IT ALL ON THE TABLE

New concepts

Reimagined experiences

New signature menu items

Expanded partnerships

32

Distinct food and beverage experiences

2

Exclusive restaurants

8

Specialty restaurants

4

Main dining restaurants

4

Complimentary casual dining venues

14

Cafés, bars and lounges



SPECIALTY DINING

Extraordinary vacations can transport you to new places by introducing you to new flavors and cuisines you may never had tried before. We believe that fine dining on vacation is just as important as the places you'll visit, and on a great vacation, those two things go hand-in-hand. And we take that philosophy even further on Celebrity BeyondSM by bringing back the mouthwatering specialty restaurants created for Celebrity Edge[®] and adding to the list an incredible new restaurant created by our Global Culinary Ambassador, the world-renowned chef, Daniel Boulud.



Le Voyage



LE VOYAGESM

BY DANIEL BOULUD

World renowned chef Daniel Boulud, our Global Culinary Ambassador, has created his first signature restaurant at sea—Le Voyage by Daniel Boulud. Just as the name implies, travel is the inspiration for Chef Boulud's tasty dishes. The global flavors he has infused into his menu are designed to give you a taste of the places that inspire him. To accompany the culinary experience is the most awarded wine collection at sea.

The ambiance of the restaurant is the result of Jouin Manku's Parisian creative talents. For Le Voyage by Daniel Boulud, the aesthetic is intimate and upscale, featuring soft tones, private banquette seating, and a stunning entryway.



FINE CUT STEAKHOUSE

Back by popular demand, Fine Cut Steakhouse offers everything you'd want in a modern steakhouse. From Japanese Wagyu Striploin to 45-day Dry-aged Prime Bone-in Rib Eye with a wide selection of premium sauces and toppings to choose from. Sink your knife and fork into the tender Grass Fed Lamb Chops, the Pan Roasted Maine Lobster Tail with creamy garlic sauce, or the Slow Roasted Cornish Game Hen.

On Celebrity BeyondSM, Fine Cut Steakhouse also offers a whole new look and feel. We've expanded the space to the edge of the ship to allow stunning views of the ocean through floor-to-ceiling windows and views of the Grand Plaza on the other. The restaurant also boasts an exciting new design created by the dynamic interior design firm, Simeone Deary. Known for their high-end luxury and forward-thinking authenticity, Simeone Deary's philosophy is straightforward: "We define what it means to truly be somewhere." They prove just that in Fine Cut Steakhouse.





LE GRAND BISTRO

Le Grand Bistro is inspired by French cafés and features the mouthwatering sights, scents, and sounds of a bustling boulangerie-pâtisserie with one state-of-the-art difference—our virtual twist on dinner theater—Le Petit Chef® brings your tabletop to life with tiny chefs who prepare your meal right in front of you.



MAGIC CARPET

Our cantilevered Magic Carpet® is several soaring venues in one. At the top of the ship, it becomes a sky-high bar with live music, tantalizing cocktails, and views that stretch for miles. On Deck 14, the Magic Carpet hosts our Dinner on the Edge® experience, an alfresco culinary journey that satisfies all your senses. When on Deck 5, the Magic Carpet sits next to Raw on 5, serving its own delicious menu of cocktails, sushi, and seafood while hovering close enough above the water to hear the soothing waves below.

MAIN RESTAURANTS

Celebrity BeyondSM offers not one but four complimentary main restaurants—Cyprus, Tuscan, Normandie, and Cosmopolitan. Every restaurant features the same mouthwatering menu that changes nightly, plus each one offers its own ambience, along with a selection of exclusive, regionally inspired dishes and drinks.

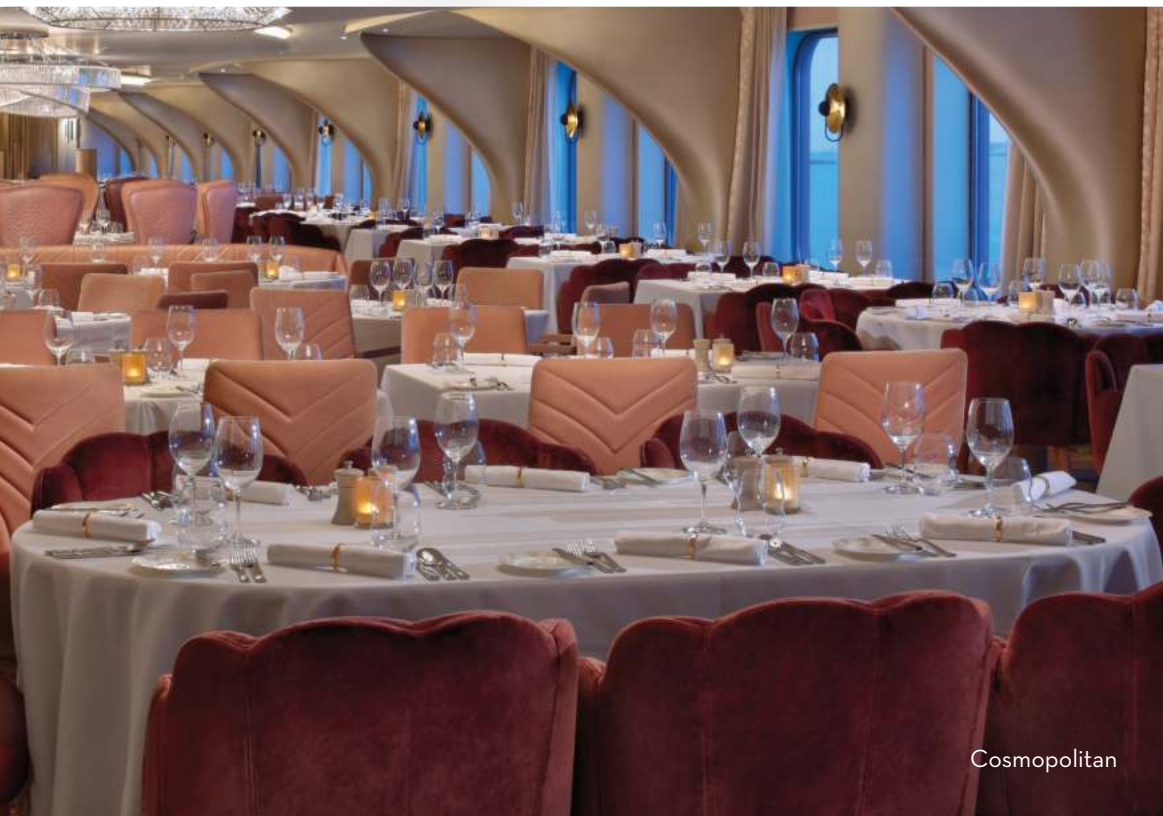
CELEBRITY SELECT DINING

Now, you can choose Celebrity Select Dining Early or Celebrity Select Dining Late, and you'll be assigned one of the four main dining restaurants, while having the option to dine in the other three upon request. Choose Celebrity Select Dining Anytime, and you can dine in any of the four restaurants whenever you want. The choice is yours.





Tuscan



Cosmopolitan

CYPRUS

This homage to our Greek heritage features delicious Mediterranean dishes, and now, a dazzling new look by Simeone Deary that's inspired by the Greek goddess of love and beauty, Aphrodite.

TUSCAN

This restaurant will transport you with its Italian-inspired cuisine, along with an equally delicious ambiance, featuring a modern classical design inspired by Italian fashion and film.

NORMANDIE

Savor contemporary French cuisine in a modern and refined setting that evokes the romance of summertime in Paris, with a color palette reminiscent of cherry blossoms in bloom.

COSMOPOLITAN

The next evolution of our main restaurants opens up with a walk-through wine display that sets the scene for the cuisine you'll enjoy here—new American with a global influence.

EXCLUSIVE DINING

LUMINAE AT THE RETREAT

Our private restaurant for guests of The Retreat® takes our passion for fine dining to new heights. Crafted by our Michelin-starred chef, the menus offered in Luminae aren't available anywhere else on board, and they include complimentary signature dishes from chef Daniel Boulud, our Global Culinary Ambassador.

BLU

Complimentary for AquaClass® guests, Blu features clean, crisp flavors and inventive cuisine—including new plant-based options—along with an extensive list of sustainable and biodynamic wines.



Luminae



Blu



Oceanview Café

COMPLIMENTARY DINING

Celebrity Beyond's complimentary dining options see the return of guest favorites that offer a wide range of dining experiences. One of these is the ever-popular Oceanview Café, with its sweeping two-story, floor-to-ceiling views. Serving a wide variety of globally inspired cuisines morning, noon, and night, you'll find old and new favorites with every visit. Plus, on Celebrity Beyond, the alfresco dining area of the Oceanview Café was designed to blend seamlessly with the newly designed, two-story Sunset Bar.

More complimentary dining options include Eden Café, where you'll find gourmet sandwiches, soups, and other fare, featuring an alfresco dining area and, of course, all three-levels of Eden to find the perfect spot to enjoy your meal. Feel like something light? Step up to The Spa Café and Juice Bar—tucked into a relaxing corner of the adults-only Solarium—to enjoy a detox smoothie by goop and a light breakfast or lunch in the most soothing atmosphere on board. Take a break from your relaxing day by the pool to grab a bite at Mast Grill. With so many options available, you're sure to find exactly what you crave any time of day.



The Spa Café and Juice Bar



World Class Bar



Sunset Bar



Martini Bar



Craft Social



Mast Bar



Café al Bacio

CAFÉS, BARS & LOUNGES

WORLD CLASS BAR

Here, fine drinking is just as important as fine dining. Using the freshest ingredients and finest spirits, our mixologists will satisfy newcomers and connoisseurs alike.

MARTINI BAR

Grab a seat at the now fully circular bar underneath the glow of the newly designed LED chandelier, and be stunned by the gravity-defying skills of our flair bartenders.

SUNSET BAR

Nate Berkus reimagined this hot spot with an international beach club ambience that makes it the perfect place to grab a drink and soak up some of the best views on the ship.

CRAFT SOCIAL

Head to Craft Social Bar to watch the big game and enjoy some of the finest craft beers in the world, with a certified cicerone to guide you through them.

MAST BAR

If your day's agenda is to swim, lounge, and repeat, you'll love this addition to the main pool area. A refreshing cocktail always steps away from your blissful, sun-splashed spot on deck.

CAFÉ AL BACIO

Kelly Hoppen's all-new design brings a calming ambience to this popular venue, featuring specialty coffees and sweet treats. Fuel up for your day ashore—or refuel for your evening aboard.

CHOOSE FROM TWO INCREDIBLE CORNERS OF THE WORLD

See the Old World from a new perspective—or find your own corner of the Caribbean on board our luxurious Celebrity BeyondSM. Whether you want to soak up the Caribbean sun or discover Europe's stunning coast—we'll help you do it in style.

THE MEDITERRANEAN

There's no better way to experience Europe than on Celebrity BeyondSM, from Iceland's Blue Lagoon to Italy's Amalfi Coast—and everything in between. With more 7-night itineraries than ever and more than 45 overnight stays in 11 dynamic cities—the most of any luxury cruise line in Europe—you'll explore the continent in depth and in style.

THE CARIBBEAN

Celebrity Beyond will journey across the Caribbean, stopping in spectacular islands in the Bahamas, U.S. Virgin Islands, Mexico, and the Cayman Islands. From the colorful reefs of Belize to the white sands of St. Lucia, experience our impressive lineup of tropical destinations. Plus, we're bringing back our popular double-overnight stay in New Orleans during Mardi Gras.



Get up close to the locals
in the Caribbean



Take in epic sunsets
from sea



Meander through seaside villages in Europe



Create new memories in the Old World

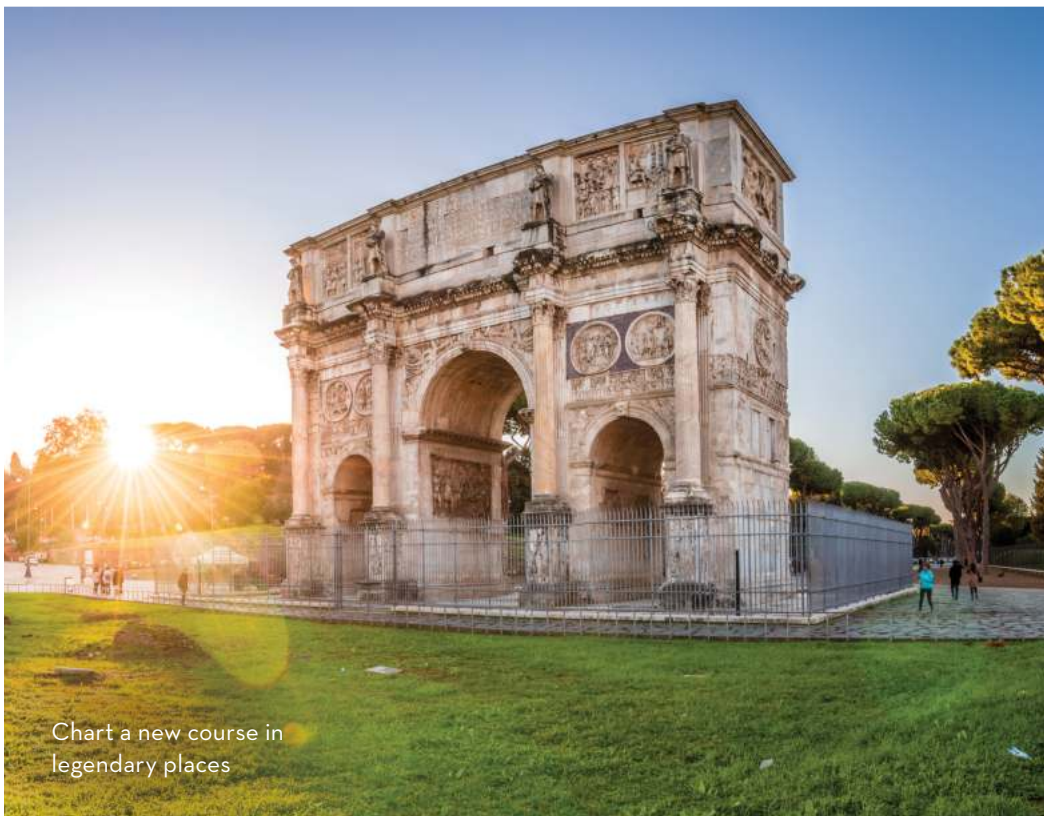
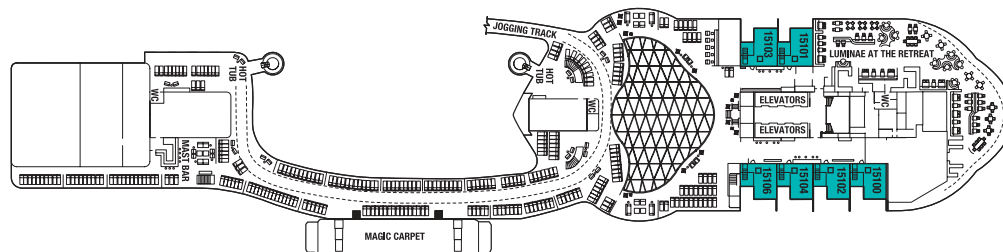
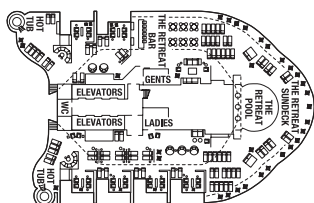


Chart a new course in legendary places

CELEBRITY BEYONDSM DECK PLANS

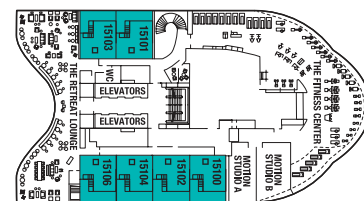
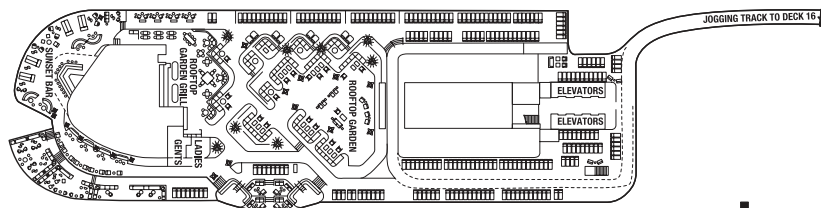
For all of the most up-to-date deck plans, visit us at celebrity.com

Deck 17



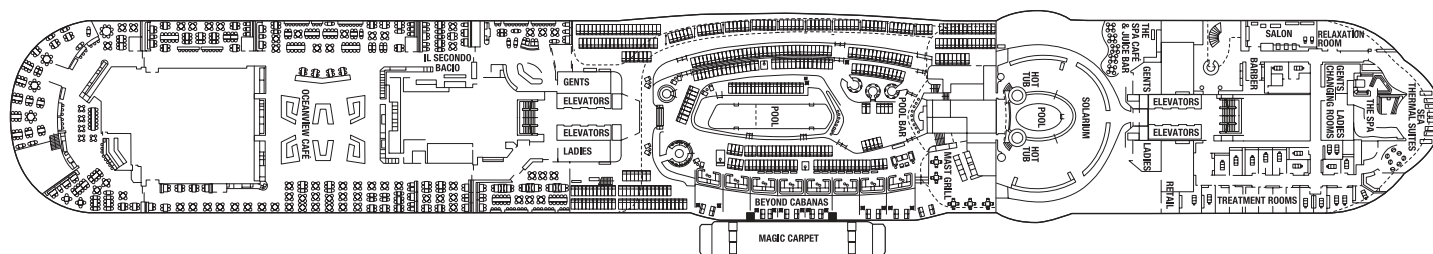
Deck 16

EV



Deck 15

EV



Deck 14

- IC Iconic Suite
- PS Penthouse Suite
- EV Edge Villas
- RS Royal Suite
- CS Celebrity Suite
- AS Aqua Sky Suite
- S1 Sky Suite 1
- S2 Sky Suite 2
- S3 Sky Suite 3

- A1 AquaClass 1
- A2 AquaClass 2
- C1 Concierge Class 1
- C2 Concierge Class 2
- C3 Concierge Class 3

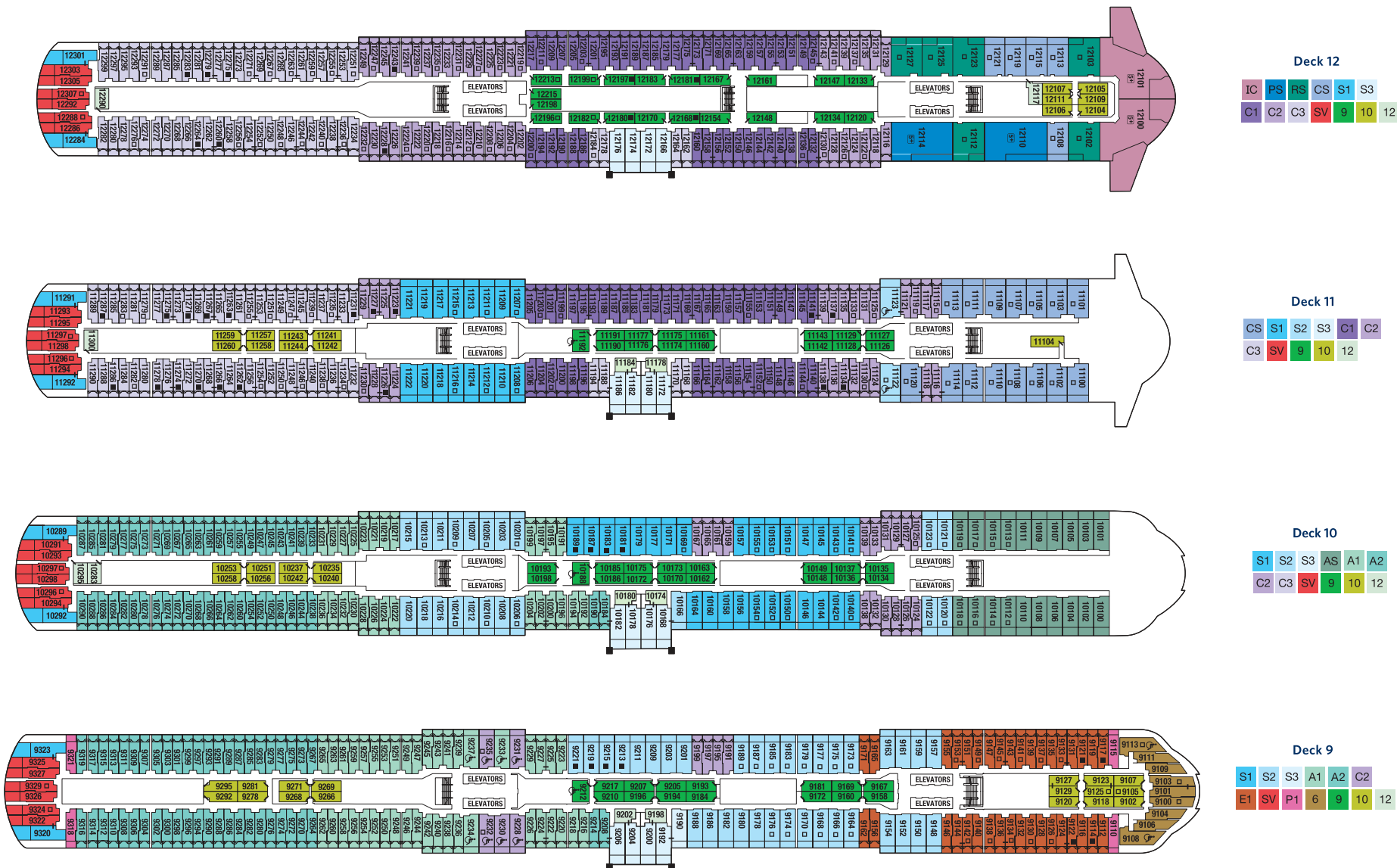
- E1 Edge Stateroom w/ Infinite Veranda[®] 1
- E2 Edge Stateroom w/ Infinite Veranda 2
- E3 Edge Stateroom w/ Infinite Veranda 3
- E4 Edge Stateroom w/ Infinite Veranda 4
- E5 Edge Stateroom w/ Infinite Veranda 5
- ES Edge Single Stateroom w/ Infinite Veranda
- SV Sunset Veranda Stateroom
- P1 Deluxe Porthole View Stateroom w/ Veranda
- P2 Deluxe Porthole View Stateroom w/ Veranda

- PO Panoramic Ocean View Stateroom
- 6 Deluxe Ocean View Stateroom 06
- 7 Ocean View Stateroom 07
- 8 Ocean View Stateroom 08
- 9 Deluxe Inside Stateroom 09
- 10 Deluxe Inside Stateroom 10
- 11 Deluxe Inside Stateroom 11
- 12 Inside Stateroom 12

- + Medical Facility - Deck 2
Located by Forward-Ship Elevators
- Double Sofa Bed
- Single Sofa Bed
- 5+ Stateroom for occupancy 5 and up
- Connecting Staterooms
- Inside Stateroom Door Location
- Wheelchair Accessible Stateroom
Featuring Roll-in Shower

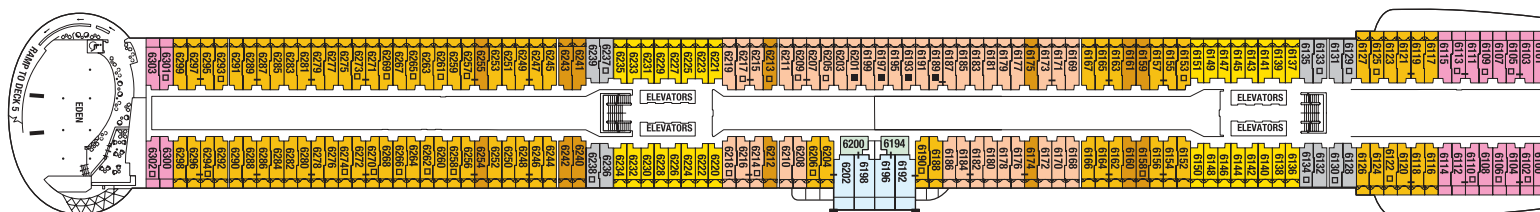
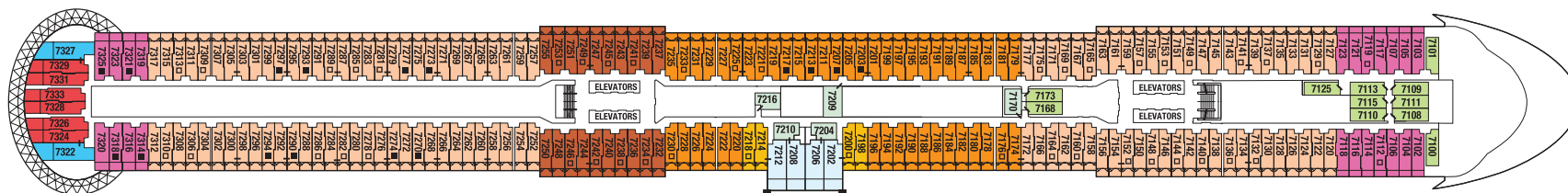
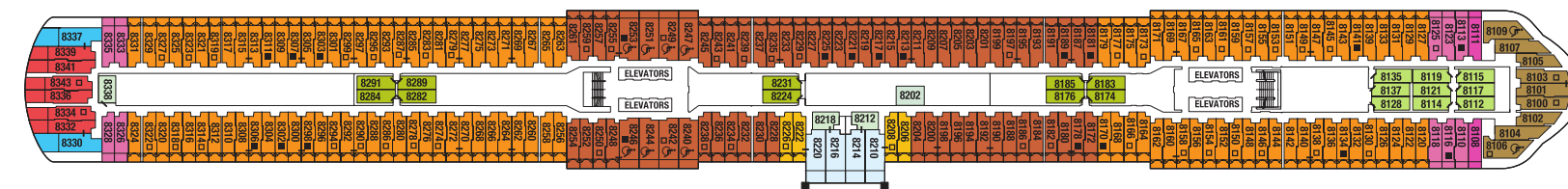
Forward





DECK PLANS ARE NOT DRAWN TO SCALE. DECK NUMBERS REFLECT UPPER GUEST LEVELS.

For an interactive deck plan experience, 360° virtual tours of stateroom categories, and the most up-to-date deck plans, visit celebrity.com



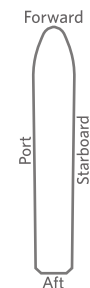
- IC Iconic Suite
- PS Penthouse Suite
- EV Edge Villas
- RS Royal Suite
- CS Celebrity Suite
- AS Aqua Sky Suite
- S1 Sky Suite 1
- S2 Sky Suite 2
- S3 Sky Suite 3

- A1 AquaClass 1
- A2 AquaClass 2
- C1 Concierge Class 1
- C2 Concierge Class 2
- C3 Concierge Class 3

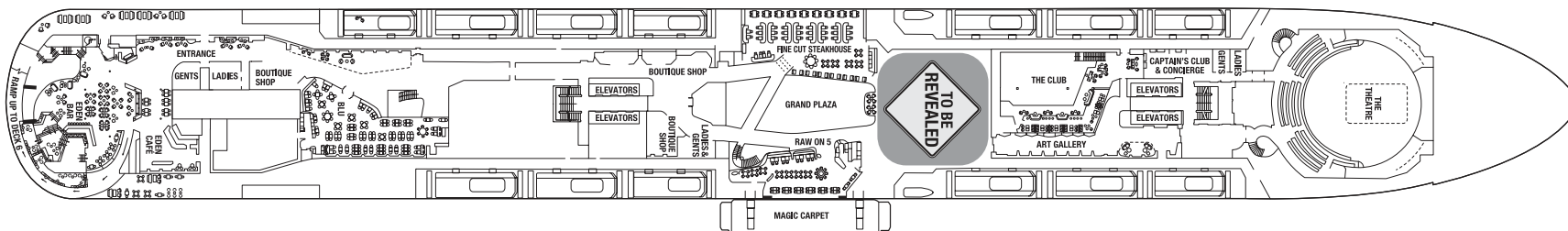
- E1 Edge Stateroom w/ Infinite Veranda® 1
- E2 Edge Stateroom w/ Infinite Veranda 2
- E3 Edge Stateroom w/ Infinite Veranda 3
- E4 Edge Stateroom w/ Infinite Veranda 4
- E5 Edge Stateroom w/ Infinite Veranda 5
- ES Edge Single Stateroom w/ Infinite Veranda
- SV Sunset Veranda Stateroom
- P1 Deluxe Porthole View Stateroom w/ Veranda
- P2 Deluxe Porthole View Stateroom w/ Veranda

- PO Panoramic Ocean View Stateroom
- 6 Deluxe Ocean View Stateroom 06
- 7 Ocean View Stateroom 07
- 8 Ocean View Stateroom 08
- 9 Deluxe Inside Stateroom 09
- 10 Deluxe Inside Stateroom 10
- 11 Deluxe Inside Stateroom 11
- 12 Inside Stateroom 12

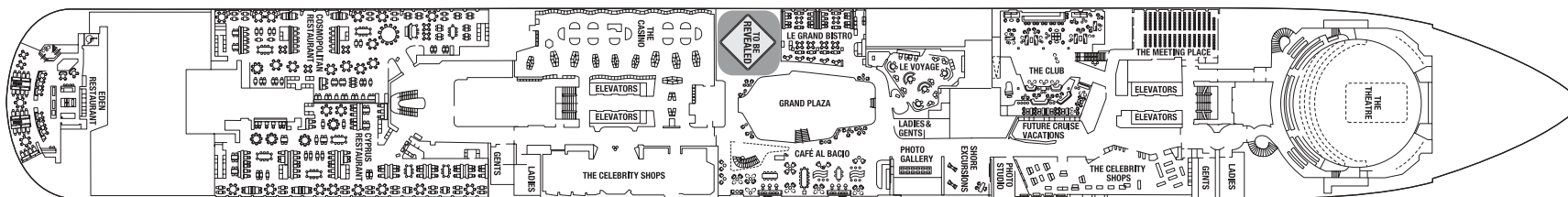
- + Medical Facility - Deck 2
Located by Forward-Ship Elevators
- Double Sofa Bed
- Single Sofa Bed
- 5+ Stateroom for occupancy 5 and up
- Connecting Staterooms
- Inside Stateroom Door Location
- Wheelchair Accessible Stateroom
Featuring Roll-in Shower



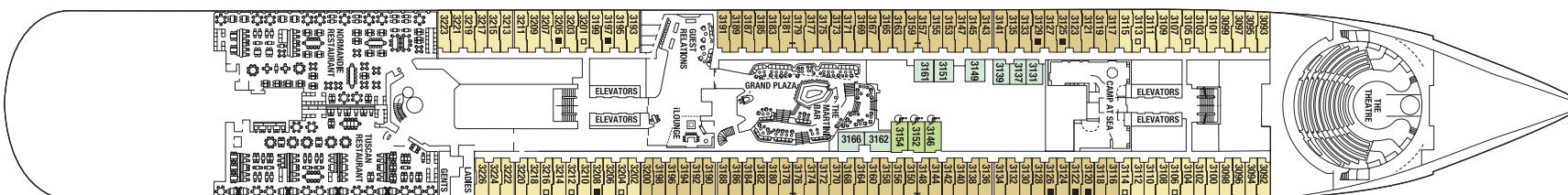
Accessible staterooms with a sofa bed accommodate a maximum of three guests. Accessible suites with a sofa bed accommodate a maximum of four guests.



Deck 5

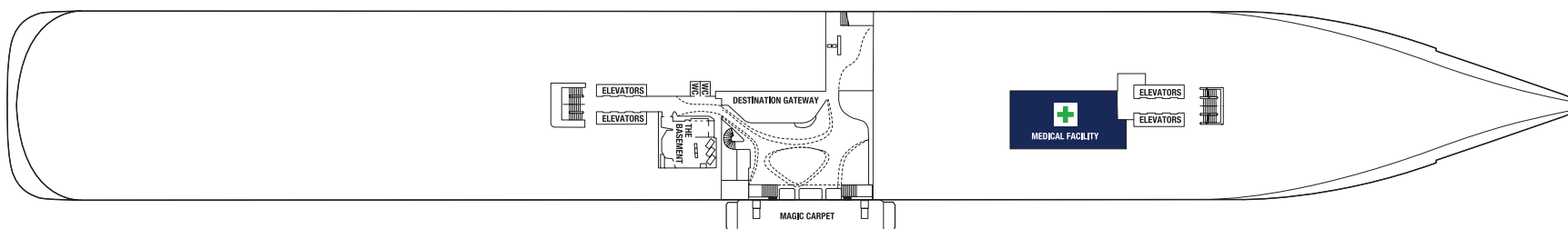


Deck 4



Deck 3

7 8 12 11



Deck 2



DECK PLANS ARE NOT DRAWN TO SCALE. DECK NUMBERS REFLECT UPPER GUEST LEVELS.

For an interactive deck plan experience, 360° virtual tours of stateroom categories, and the most up-to-date deck plans, visit celebrity.com.

CELEBRITY BEYONDSM | SUITES



IC **ICONIC SUITE**
1,892 sq. ft.
Veranda 689 sq. ft.

- The largest suite in our fleet
- Positioned high on top of the ship above the bridge, with sweeping panoramic views from front to back
- Two bedrooms and two full baths
- Celebrity eXhale™ bedding featuring a luxurious king-size Cashmere Mattress
- Dual sinks and separate full shower and whirlpool tub
- Private butler's pantry
- Expansive outdoor space with private hot tub and covered, double daybed
- Surround sound system with 65" smart TV



EV **EDGE VILLAS**
739 sq. ft.
Veranda 211 sq. ft.

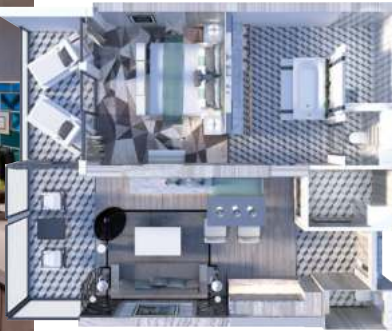
- Two-story luxury residences that seamlessly blend indoor and outdoor living
- Private terrace with three-foot-deep plunge pool and inviting lounge furniture
- Direct access to The Retreat®
- Surround sound system with 55" smart TV
- One bedroom and two full baths
- Celebrity eXhale® bedding featuring a luxurious king-size Cashmere Mattress
- Marble primary bath with whirlpool tub
- Double washbasins



PS **PENTHOUSE SUITE**
1,378 sq. ft.
Veranda 197 sq. ft.

- Surround sound entertainment system with 65" smart TV
- Two bedrooms and full second bath
- Celebrity eXhale® bedding featuring a luxurious king-size Cashmere Mattress
- Walk-in closets
- Primary bath includes whirlpool tub with a view

FOR THE MOST UP-TO-DATE SUITES AND STATEROOMS, VISIT CELEBRITY.COM



RS ROYAL SUITE
687 sq. ft.
Veranda 72 sq. ft.

- Floor-to-ceiling sliding glass veranda door and window for maximum views
- Celebrity eXhale® bedding featuring a luxurious king-size Cashmere Mattress
- Walk-in closet
- Expansive open design walk-in shower
- Whirlpool soaking tub
- 55" smart TV



CS CELEBRITY SUITE
401 sq. ft.
Veranda 100 sq. ft.

- Surround sound entertainment system with 50" smart TV
- Veranda with lounge seating
- Celebrity eXhale® bedding featuring a luxurious king-size Cashmere Mattress
- Mini-fridge
- Split bathroom with dual access
- Tub with shower and sink compartment with direct access from the bedroom
- The two compartments have a connecting door, to accommodate dual use



S1 SKY SUITE
319 sq. ft.
S2 Veranda 79 sq. ft.
S3

- Celebrity eXhale® bedding featuring a luxurious king-size Cashmere Mattress
- Veranda with lounge seating
- Mini-fridge

AS AQUA SKY SUITE
319 sq. ft.
Veranda 79 sq. ft.

- Celebrity eXhale® bedding featuring a luxurious king-size Cashmere Mattress
- Veranda with lounge seating
- Mini-fridge

CONNECTING STATEROOMS: If you're traveling with your family and/or friends, you should consider our convenient adjoining staterooms.

Furniture configuration shown may vary in staterooms. All measurements are approximate.

* & Some suites and staterooms are accessible for wheelchair users and other guests with disabilities. They include roll-in showers, grab bars, and other accessible features. Please see the specific ship deck plans for the locations of all wheelchair accessible suites. For more details, visit celebrity.com/accessiblestaterooms.



- A1** * AQUAClass® STATEROOM WITH INFINITE VERANDASM
- A2** Total living space 243 sq. ft.
Veranda 42 sq. ft.

- C1** CONCIERGE CLASS STATEROOM WITH INFINITE VERANDA
- C2** * Total living space 243 sq. ft.
- C3** Veranda 42 sq. ft.

- E1** * **E2** EDGE STATEROOM WITH INFINITE VERANDA
- E3** **E4** Total living space 243 sq. ft.
Veranda 42 sq. ft.



- ES** EDGE SINGLE STATEROOM WITH INFINITE VERANDA
- Total living space 184 sq. ft.
Veranda 42 sq. ft.



- SV** SUNSET VERANDA STATEROOM
- 228 sq. ft.
Veranda 89 sq. ft.
- SUNSET VERANDA LOCATED AFT OF SHIP.



- P1** DELUXE PORTHOLE VIEW STATEROOM WITH VERANDA
- P2** 202 sq. ft.
Veranda 40 sq. ft.



PO PANORAMIC OCEAN VIEW STATEROOM
212 sq. ft.

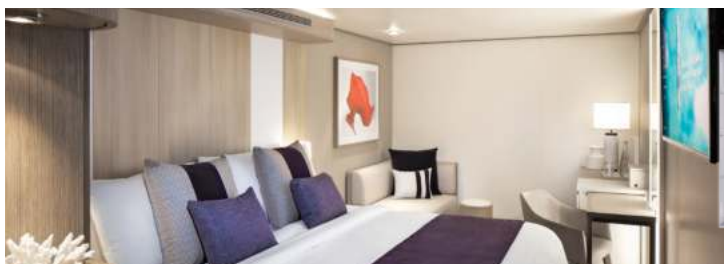


6 * DELUXE OCEAN VIEW STATEROOM
238 sq. ft.



7 OCEAN VIEW STATEROOM
200 sq. ft.

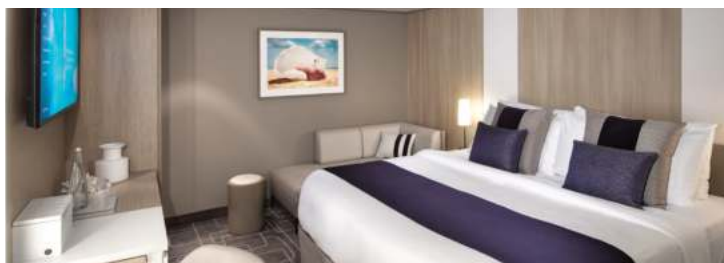
8



9 * DELUXE INSIDE STATEROOM
202 sq. ft.

10

11



12 INSIDE STATEROOM
181 sq. ft.



CONNECTING STATEROOMS: If you're traveling with your family and/or friends, you should consider our convenient adjoining staterooms.

Furniture configuration shown may vary in staterooms. All measurements are approximate.

* Some suites and staterooms are accessible for wheelchair users and other guests with disabilities. They include roll-in showers, grab bars, and other accessible features. Please see the specific ship deck plans for the locations of all wheelchair accessible suites. For more details, visit celebrity.com/accessiblestaterooms.

FOR THE MOST UP-TO-DATE SUITES AND STATEROOMS, VISIT CELEBRITY.COM

EXPERIENCE THE BEST ON YOUR NEXT VACATION



CALL 1-888-283-6374. CONTACT YOUR TRAVEL ADVISOR. VISIT [CELEBRITY.COM](https://www.celebrity.com)

Celebrity **X** Cruises®

JOURNEY WONDERFULLSM

CBYDIG21