

EFK Moen

Civil Engineering Design

2300 Windy Ridge Parkway, Suite 210S
Atlanta, Georgia 30339

770-575-0384

www.efkmoen.com

EFK Moen is a D/WBE civil engineering design consulting firm that has been providing professional engineering and surveying services in the transportation sector since 1998.

NAICS: 541330 & 541370

DUNS: 084867071

With five office locations in three states, **EFK Moen specializes in:**

- * **Roadway & Freeway Design**
- * **Bridge Engineering & Box Culverts**
- * **Horizontal & Vertical Alignment**
- * **Retaining Walls**
- * **Final PS&E**
- * Feasibility & Conceptual Studies
- * Preliminary ROW & Final Plans
- * Traffic, Lighting & Signing Design
- * Traffic Control Staging/MOT
- * Public Involvement
- * Utility Coordination
- * Pavement Marking Plans
- * Pavement & Open Drainage Systems
- * Erosion Control Plans & SWPPPs
- * Detention & Bio-swale Designs
- * Value Engineering Studies
- * HEC RAS Studies

DBE Certified

In Georgia, Illinois, Missouri, Oklahoma,
South Carolina, and Virginia

&

Cobb County DOT Prequalified Firm

GDOT Prequalification

Transportation Planning

- 1.09 Location Studies
- 1.10 Traffic Studies

Highway Design Roadway

- 3.01 Two-Lane or Multi-Lane Rural
- 3.02 Two-Lane or Multi-Lane Curb & Gutter
- 3.03 Two-Lane or Multi-Lane Widening/Reconstruction
- 3.04 Multi-Lane Limited Access Expressway Type
- 3.05 Design of Urban Expressway & Interstate
- 3.06 TrafficOperationsStudies
- 3.07 TrafficOperationsDesign
- 3.12 Hydraulic & Hydrological Studies (Roadway)
- 3.13 Facilities for Bicycles & Pedestrians

Highway Structures

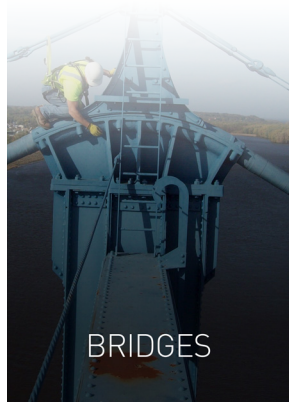
- 4.01a Minor Bridge Design
- 4.02 Major Bridge Design
- 4.04 Hydraulic & Hydrological Studies (Bridges)
- 4.05 Bridge Inspection
- 9.01 Erosion, Sedimentation & Pollution Control

Why Choose EFK Moen?

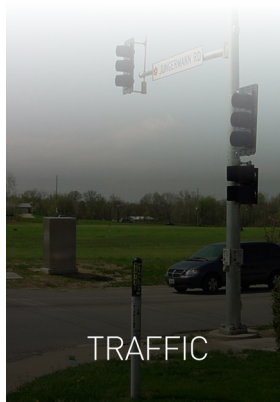
- **Trusted** - Our clients are repeat customers due to our attention to detail, integrity, and abilities.
- **Responsive** - Our staff are empowered, qualified and technically capable to strategize and solve problems.
- **Experienced** - Our firm boasts high employee retention, creating exceptionally experienced staff.



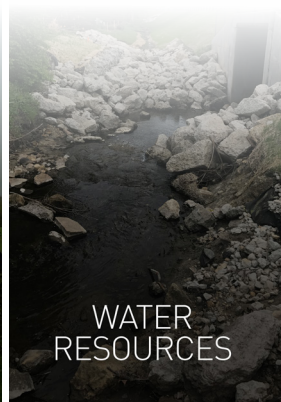
ROADWAYS



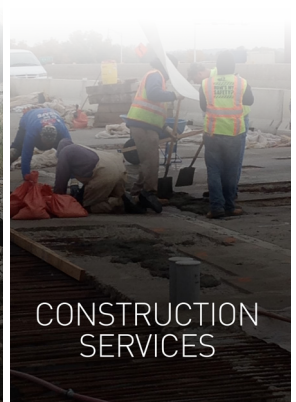
BRIDGES



TRAFFIC



WATER
RESOURCES



CONSTRUCTION
SERVICES

St. Louis

Chicago

Atlanta