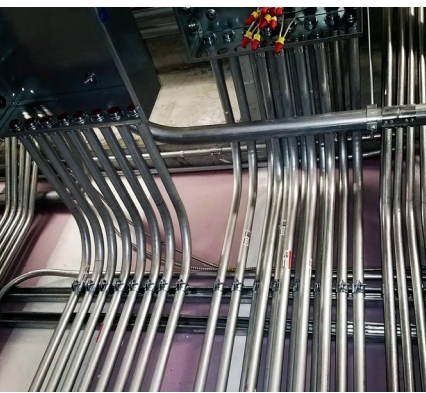


# CAPABILITY STATEMENT



**Electrical service is our expertise, and our work comes with the promise of quality, dedication, reliability, and durability. LIT Electrical Consultants is licensed, bonded and insured.**

Our mission is to provide superior electrical service and solutions to our clients. Our superiority embodies experienced, responsive, competitive, dependable, and safe electricians and professionals. Our team uses the highest ethical standards based upon our company's four core values: **Customer Service, Community, Quality, and Integrity**. Our core values define us as a company and dictate our commitment to our clients, employees, and to the electrical profession overall. We ensure quality service that is reliable and durable. We will provide our clients with top notch professionalism and continue *Lighting our way through the city, one customer at a time - with Confidence!*

## LABOR CATEGORIES

- Master Electrician
- Journeyman
- Apprentice

## COMPANY DATA



**GDOT  
DBE CERTIFIED**

**MBE CERTIFIED IN:**  
Clayton, South Fulton,  
City of Atlanta

**NAICS: 238210  
CAGE: 8FNB3  
DUNS: 111697543**

## CORE COMPETENCIES

- Electrical Installations
- EV Charging\*
- 277/480 volts
- 120/208 volts
- Installation of UPS (Uninterrupted Power Supply)
- Commercial Specialty Lighting
- Electrical Renovations
- Cable Tray Installations
- Lighting Controls
- Installation and Maintenance of Motors
- Ballast & Bulb Replacement
- Lighting Repairs
- Installation and Maintenance of Switchgears
- Installation of ATS (Automatic Transfer Switch) Systems

\* Our Electricians are **Electric Vehicle Trained and Certified**

## PAST PERFORMANCES

**MERCEDES BENZ  
STADIUM  
GOOGLE  
MARTA**

**SUNTRUST PARK  
STADIUM  
STATE FARM ARENA  
GRADY HOSPITAL**

[litelectricalconsultants.com](http://litelectricalconsultants.com)

**404.493.6741**