

MESSAGE FROM RIBA-USA PRESIDENT



I hope this email is finding you all well and healthy. What a tumultuous year we have had. As I write this, the election has just been called and however you fall politically, it is good to know where we stand so that we may now move into the new year with direction.

The global health pandemic has starkly highlighted the inequalities faced by Americans and the data suggests we need to work harder as designers to create safer, healthier environments.

We need to listen and learn from each other across the political divide to ensure we can deliver this. Let's unite rather than further divide.

Please find below the first of our quarterly highlights from the RIBA-USA Board. One thing I really want to work on is bringing us together as a community of architects spread all over this vast continent and effectively communicating what we are all doing.

From my view, we are working behind the scenes to try to help our membership as we see fit, but as ever, please do not hesitate to get in touch to let us know the view from your desk and how we can help.

Catherine Clark RIBA

RECIPROcity

Catherine Clark has been meeting with members of the Senior Trade Policy Advisors Group in NYC to look into reinstating reciprocity between the UK and US for architects as part of the UK's negotiations for a trade deal.

Since reciprocity already exists between the US and Canada, Australia, New Zealand and, Mexico we would like to have full recognition of the British qualifications along the same lines as we did before the UK entered the EU.

We have been advised that the Architect's Act 1997 has to be revised in order for this to happen. But as it stands, the deal being offered via the UK Government's consultation is primarily concerned with allowing foreign architects to work in the UK and does not mention British architects working abroad.

Please follow this [link](#), so that you can do your part to get the right to call yourself and work as an architect in the US.

The RIBA has its own [link](#). We recommend filling out both. Please feel free to reach out about this to info@ribausa.org.

EDUCATION

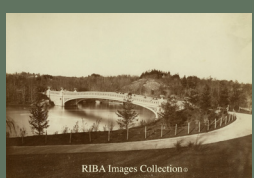
Catherine Davis, Frank Mruk and Phil Allsopp are working on potential links to schools of architecture in the US and having them be RIBA accredited.

Catherine Clark just examined this years international Part 3 students which provides an interesting snapshot of the world from our new generation of licensed architects.

WEBSITE

The RIBA rejected our funding application for a second time for a new website for the RIBA-USA. We will have a presence on the architecture.com website but hope to find sponsors and partners to create a forum for our US members to post their work and visions and where our regional chapters can post their events.

Exhibits



Catherine Clark and Catherine Davis are working with RIBA, London and Google to create an on-line exhibit around the drawings given to one of the founders of the RIBA (and the Bartlett School of Architecture) in 1867 by the founder of the AIA (and Columbia School of Architecture) of the freshly created Central Park.

CHAPTER NEWS

SAN FRANCISCO



Congratulations to Leyla Hilmi of Hilmi Design who is the new Chapter Chair of San Francisco. Welcome to the team, Leyla and we look forward to working with you!

Leyla Hilmi is the sole practitioner at Leyla Hilmi Design based in Marin County, mainly specializing in single-family residential projects ranging from small additions to the new construction of larger homes. She has lived in the Bay Area for twenty years and in 2009 became a founder member of the RIBA USA San Francisco. Together with Chad Overway and Andrew Golland they worked to establish the Chapter by connecting the members and putting on social, networking and educational events.

NEW YORK



We are looking for new Chair in NYC. It is a great opportunity to network and open doors in the city with the highest density of RIBA architect members. The job description is to arrange gatherings for members, talks and chapter chats etc. Also to provide forums for highlighting the work of members and liaising with the other groups in NYC such as the AIA and the schools of architecture there. It's a fun crew of people!

NY Chapter Chat with RIBA Gulf

The RIBA Gulf Chapter invite all members in Eastern Standard Time to a Zoom introduction to their work in the Middle East. Please contact catherine (at my new email address?!) for further information.

PHILADELPHIA

Chapter Chair Clive Copping is looking to grow the PA and environs chapter. Please email him at ccopping@cvmprofessional.com to get involved.

ATLANTA DESIGN FESTIVAL

Call for submissions! [The Atlanta Design Festival](#) wants to feature your work. Please find attached the pdf description. They would love to offer tours of buildings, obviously in a post COVID scenario.

This is a good opportunity to showcase your work to a broader audience.

Catherine Clark has recorded a podcast with the ADF to be aired in due course about the role of the RIBA-USA on the design scene in the US.

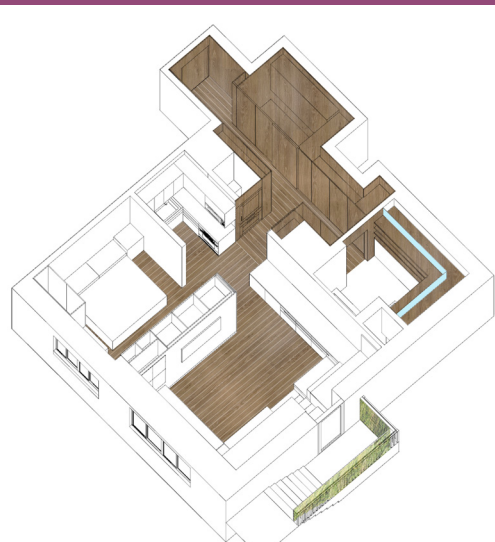
AWARDS

Congratulations to Martin Hopp, NY Chapter member and supporter of the RIBA-USA for many years who has won a 2020 AIA NY award for his ingenious apartment design!

This project received a 2020 AIA NY Interior Award with juror Marz Ann Lazarus noting "It's a Swiss Army knife of an apartment - everything kind of folds out and comes back in".

This garden level apartment resulted from major structural repairs in the basement of a 1930's building creating a space with odd layout and challenging features, further complicated by the subterranean feel being partially submerged below grade and hemmed in by foundations giving only brief moments of natural daylight. The challenge was to transform an unremarkable listed 720 sf, including 30% corridor and bathroom, into the perfect one/two-bedroom multipurpose apartment.

Extensive custom, locally built, millwork (folding and pivoting doors, rotating table, counterbalanced spring mechanisms, lots of storage) created transforming high-quality microelements producing a series of multifunctional light and bright spaces. The result balances extreme functionality with a pleasing white and wood aesthetic.



Achieving a carbon neutral built environment needs to emphasize the adaptive reuse of existing structures and empower our most creative designers to imaginatively make these spaces highly functional for today. Retrofitting saves 50-75% of embodied carbon compared with new construction which takes between 10 - 80 years to pay back the construction generated embodied carbon emissions. The obsession with new forms needs to be supplanted by a fresh understanding of the opportunities involved in reworking existing structures.

The project created a flexible, ergonomic and delightful home with small-scale office and work space and acts as a prototype for similar future renovation projects in other unremarkable locations. A series of small, hyper-functional spaces are transformed using flexible, micro elements to create a multi-functional home that can adapt for the needs of its changing users.