

COATINGS SOLUTIONS

HIGH PERFORMANCE

www.coatingsoln.com - Office: 863-450-2192- E-mail: info@coatingsoln.com

Technical Data Sheet

3928 Anchuca Road STE 18-20
Lakeland, FL 33811

TRU-ALPHA PAVER SEAL

DESCRIPTION:

Tru-Alpha Paver Seal is a concentrated water-based Aliphatic Urethane after reduction with water this sealer penetrates and seals the pavers. Also, an excellent joint stabilization. Available in Natural or Satin Finish in 5 and 2.5 gal kits. Tru-Alpha Paver Seal is formulated to seal pavers made to ASTM C-936 specifications and an absorption rate of 5% or less. Pavers with higher absorption rate will require additional application of sealer.

ADVANTAGES:

- Clean and Seal in one day
- 48 % Solids
- Chemical and Stain Resistant
- Excellent joint stabilization (for paver joints up to ¼" in width), no need for polymeric sand
- Algae and Mold Inhibitor
- Inhibits weed growth
- VOC compliant <50g/L
- Concentrated 5-gal kit after reduction yields 10 gallons of sealer

SURFACE PREP:

Pressure wash ensuring that surfaces are clean and free of oil, efflorescence, laitance or contaminants prior to beginning the sealing process. Remove at least 1 to 2 inches of the old joint sand so new sand can be replaced between the paver joints. Rinse the pavers thoroughly with water remove. Neutralize acids with a solution of baking soda and water (1 tablespoon of baking soda to 1 gal of warm water) rinse before sealing.

SANDING JOINTS:

Use a coarse fractured sand (C140). Broadcast joint sand over the pavers. Rinse the sand into the paver joints using a low-pressure stream of water to 1/8" below the chamfer edge of the pavers. Use a leaf blower to blow off any residual sand left on the surface of paver. (**DO NOT USE POLYMERIC SAND**)

COVERAGE:

Apply sealer between 300 to 500 sq. ft. per gallon; however, this rate will vary depending on the texture and absorption rate of the pavers and the width of the paver joints.

APPLICATION INSTRUCTIONS:

Apply at temperatures between 50° F and 95° F. Do not apply if surface or ambient temperature is below 50°F. Don't apply if temperatures are expected to drop below freezing (32° F)

MIXING:

Add One Part B to Four Parts A stir with a mechanical mixer a low speed for 2 minutes. Then dilute this mixture with 1-part water to 1-part mixed sealer by volume. Stir again for 2 additional minutes.

APPLICATION:

Using our battery powered pail pump system or pump sprayer, uniformly apply a flood coat of Tru-Alpha Paver Seal for joint stabilization. Hold sprayer tip 12" from the paver surface. Tru-Alpha Paver Seal will appear white when applied but dries crystal clear (Back rolling is recommended to eliminate puddling)



COATINGS SOLUTIONS

HIGH PERFORMANCE

Technical Data Sheet

3928 Anchuca Road STE 18-20
Lakeland, FL 33811

HAZED WHITE OR PEELING SEALER:

If existing sealer has peeled or has blushing white spots, then sealer should be stripped prior to sealing with our **Paver Fast Strip**.

Example hazed sealer photo to the right

DRY TIME:

Tack free/foot traffic: 2-4 hrs. Recoat 24 hrs.
Heavy foot traffic 48 hrs. Vehicular Traffic 3 days.

If allowed to cure more than 24hrs. lightly sand the surface and wipe down with denatured alcohol or acetone before applying additional or finish coats.

MAINTENANCE:

After sealer has cured 30 days deck can be maintained using a mild detergent or deck wash.

Re-sanded and resealed every 2 to 3 years depending on exposure and traffic.

CLEANUP:

Immediately flush sprayer pump with water. Always flush system again morning before spraying ensure its not restricted.

STORAGE:

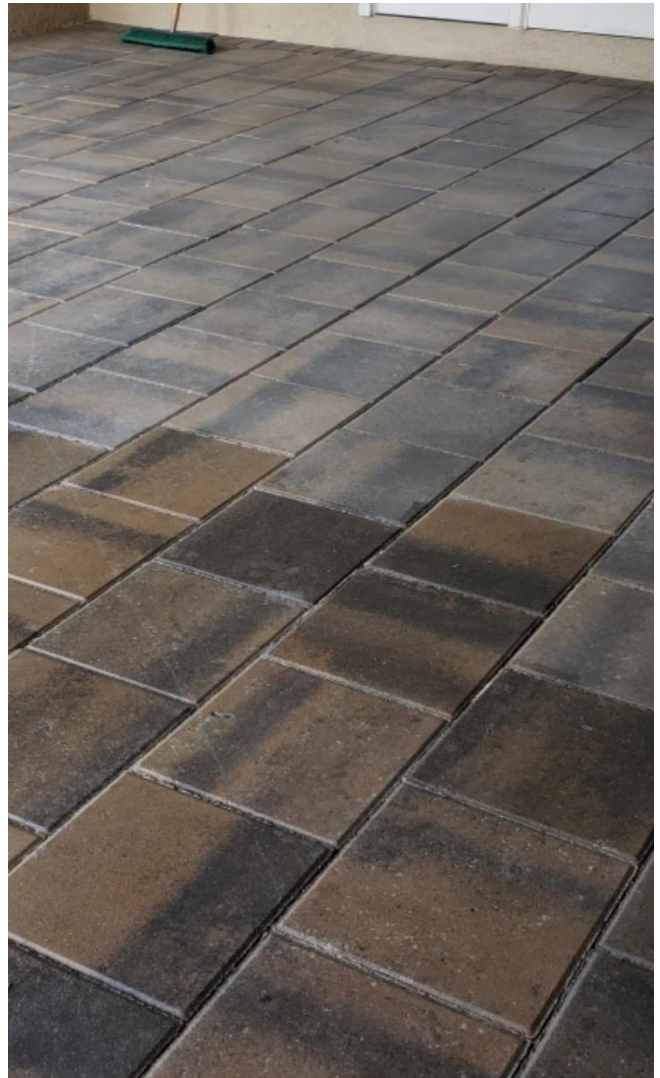
Store at temps above 50F. If product freezes, it is no longer usable. Shelf life is 18 months.

WARRANTY:

Materials are free of defect. No labor



Hazed Sealer



After application of Tru-Alpha Paver Seal enhances color of paver