

BerdeMont B001 (Home Tweet Home) Kit Assembly Guidance

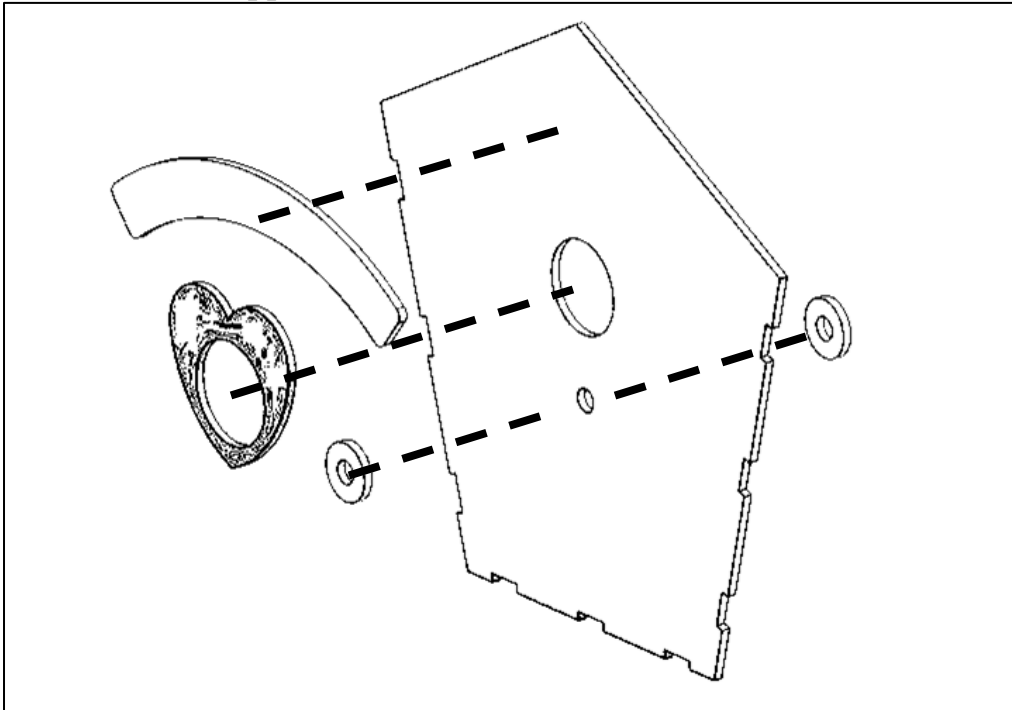
Thank you for purchasing a BerdeMont! We hope that you enjoy the assembly process and putting your own final touches on this uniquely crafted birdhouse. Please use this assembly guidance to help answer any questions about part placement. The instructions are provided to recommend an order of operations for assembly to achieve the best and most successful outcome.

You may wish to paint or stain your pieces before assembly.

Recommended adhesive is cyanoacrylate ('super glue') or E6000 craft adhesive to provide a near instant position hold. It is recommended to apply a stronger more durable wood glue on all inside corner seams when appropriate to do so (for example before securing the roof in place). This adhesive approach achieves a neat finished exterior view, and a durable interior bonded construction.

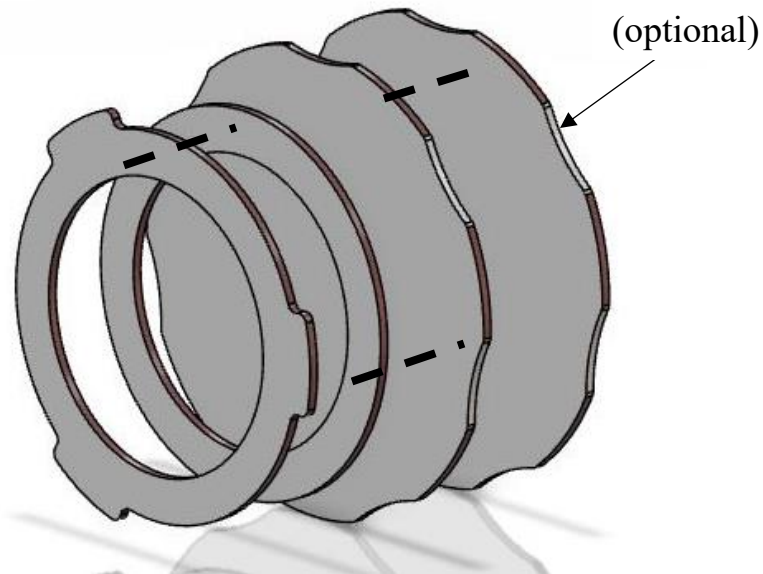
STEP 1

- Glue "Home Tweet Home" sign over the traced location on Front Wall.
- Glue Heart over traced location on Front Wall.
- Glue Perch Support, one each, on inside and outside of Front Wall.



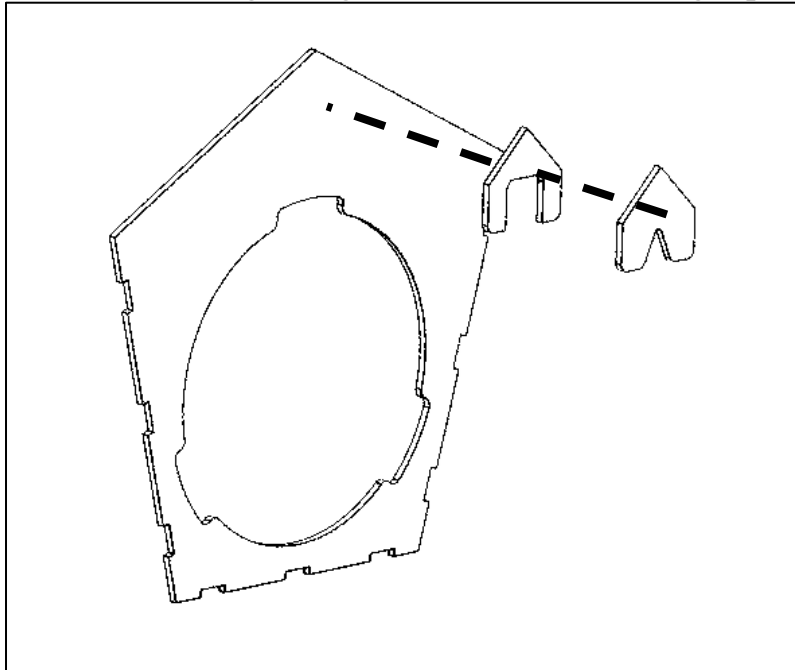
STEP 2

- Glue Spacer Ring over traced location on Rear Door
- Glue inside latch aligned over Spacer Ring
- For additional hand grip, you may apply second Rear Door to very outside to thicken the panel (optional).



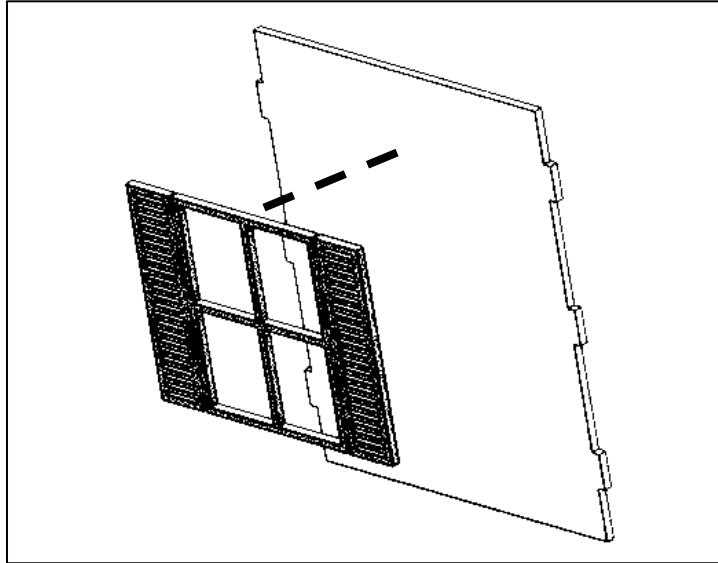
STEP 3

- Glue “square opening” hangar over traced outline on Rear Wall.
- Glue “vee notch” hangar aligned over the other hangar piece.



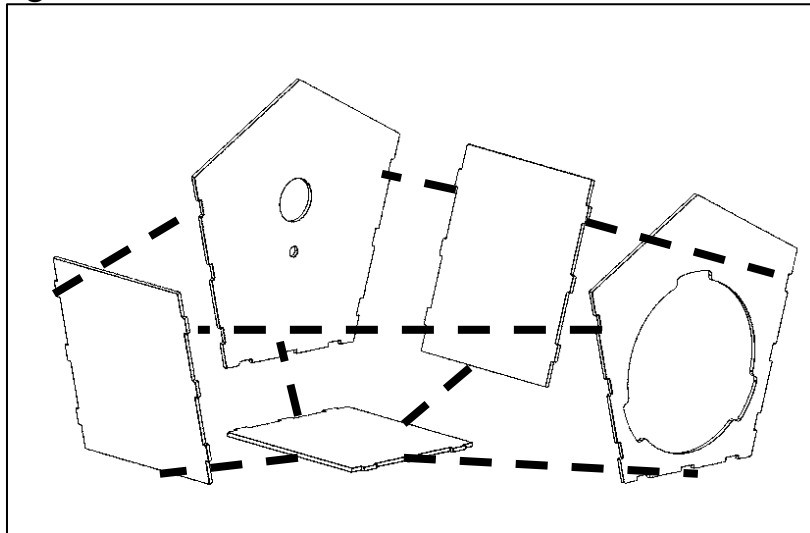
STEP 4

- Glue Window over outline on Side Wall (make 2 of these).



STEP 5

- Glue each pre-assembled wall section together and to the Floor with the accessories displayed outward.
- After assembly, it is recommended to apply additional adhesive or wood glue to all internal seams.



STEP 6

- Glue each Roof to Walls.
- Add Fences to Side Walls (centered left to right, aligned to bottom of bird house).
- Add Fence to Front Wall (centered left to right, aligned to bottom of bird house).
- Insert Perch into Perch Hole. This is a friction fit and often requires twisting while inserting into place. Designed to be secure and provide confidence to birds when investigating the house. Perch should extend $\frac{1}{2}$ way inside birdhouse.
- Insert rear cleanout cover. This may be difficult to install for the first time but will become easier with use, eventually operating freely as the parts 'wear into each other'.

