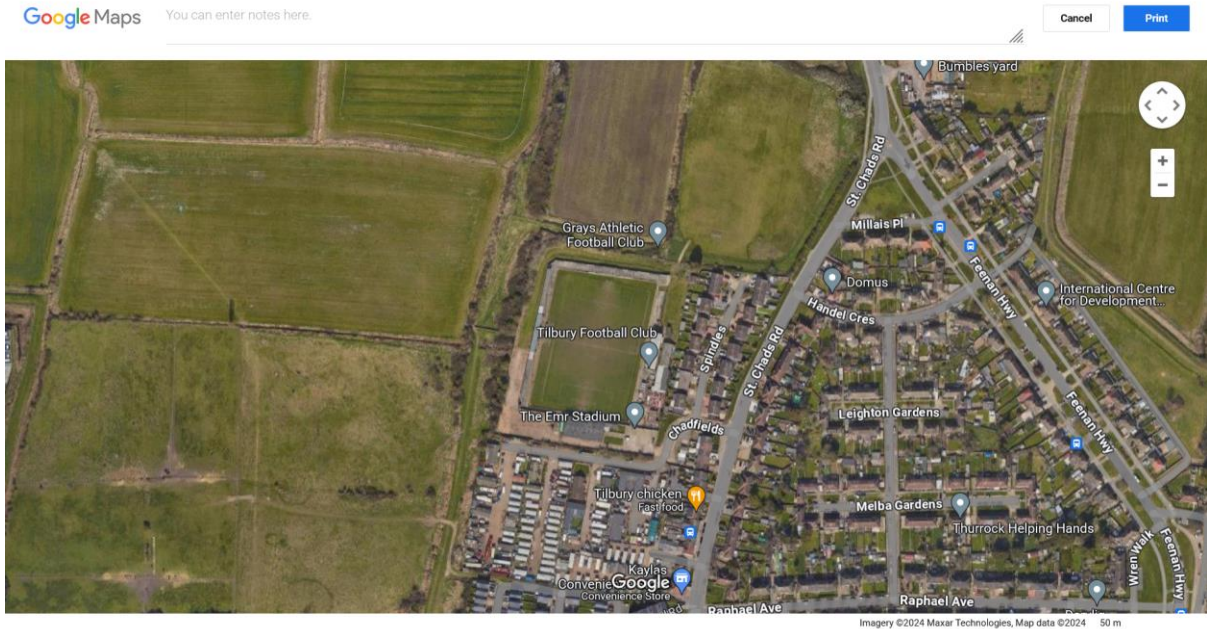


# Tilbury Football Club



## Medical & Emergency Assistance Procedure



Tilbury Football Club St Chads Road Tilbury RM18 8NL

01375 843093

Please note a Defibrillator Machine is located in the entrance to the Players Changing Rooms. It is fitted to the wall as you enter the Changing Rooms

**In the event of an Emergency please telephone 999 and request an Assistance from the Emergency Services.**

Ensure when speaking with the Emergency Services you advise;

Your Name and contact details (telephone number)

Contact details of the Ground (telephone number)

The address of the facility and where the incident is located

Description of incident (person injured or Emergency situation)

Delegate (if possible) a person to meet Emergency Services upon their arrival to direct them to the incident.

Ensure clear passage for the emergency Services vehicle to enter and leave the facility

Ensure clear passage for the Emergency Services to the incident

## Tilbury Football Club



### **Emergency Ambulance Access Route**

After requesting assistance, ensure that a delegated responsible person meets the Emergency Services at the Clubs main entrance.

Ensure there is clear access for the Ambulance to park in a safe place

Direct or escort the Emergency Services to the incident

### **Emergency Fire Services**

After requesting assistance, ensure that a delegated responsible person meets the Emergency Services at the Clubs main entrance.

By utilising the Clubs Safety Stewards, Evacuate the Ground via safe exits

**There is an emergency Fire Hydrant adjacent to the Ground Entrance in Chadfields, please ensure there is clear access.**

In the event of Fire evacuate the facility so that all person's present are removed to a safe place away from the unsafe situation.

## Tilbury Football Club



### **Directions to nearest Hospital: Basildon A&E Hospital**

Directions to Basildon University Hospital, Quickest Route which is the nearest Emergency and Accident Hospital

- Leave the ground from the main entrance, turn left in to St Chadds Road Tilbury
- Take second exit at the roundabout adjacent to The Gateway School.
- Take first exit at the next roundabout onto Marshfoot Road, take second exit over roundabout by school entrance.
- Follow Marshfoot Road until next roundabout take first exit onto Dock Approach Rd/A1089 towards Grays and Southend Grays A 13
- Take exit towards Southend A 13 eastbound to Nether Mayne/A176 in Essex 8.7 miles. Take the 3<sup>rd</sup> exit for A176 from A13
- At Roundabout at the top of the slip road, take first exit via dedicated slip to Nether Mayne
- Go straight over Traffic Lights
- At Roundabout take first exit on slip road. Signposted to Hospital A&E