



 aloha ai
where humanity meets technology



Guided by the **principles of aloha** and driven by **global and ancestral knowledge**, our ai powered solutions **solve the world's biggest problems**, one strategic plan at a time.

Take real action with unprecedented speed.

Pa'a ka waha, hana ka lima.

90% of strategic plans **fail at implementation**

that was

\$300B

wasted in 2023 alone...

The traditional method of developing strategic action plans across any industry is often **ineffective** and **expensive**, **lacking technology** and **the human touch**.

Time: 6mo - 1yr

Cost: \$100k - \$500k

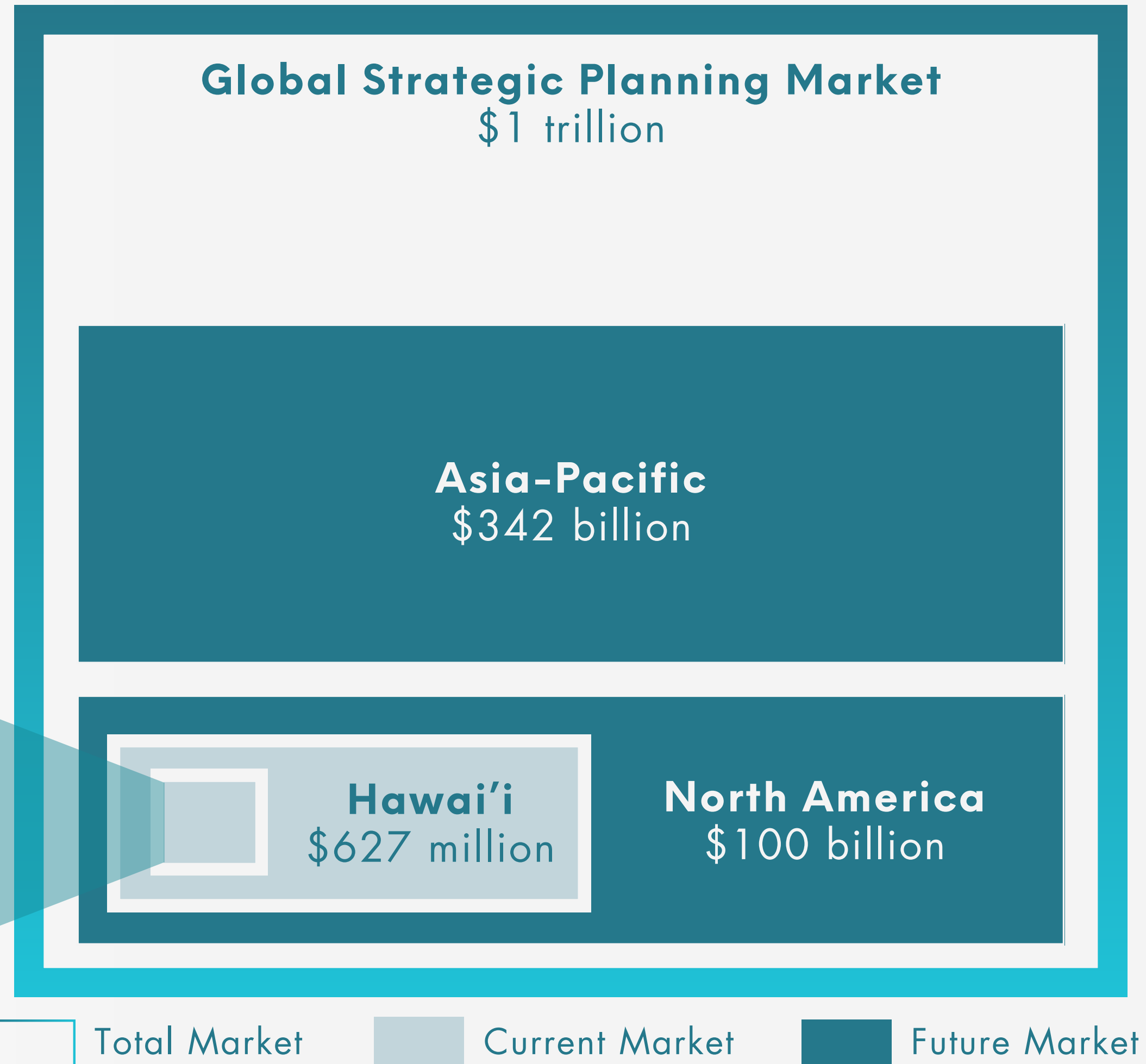
Team: 10-200+

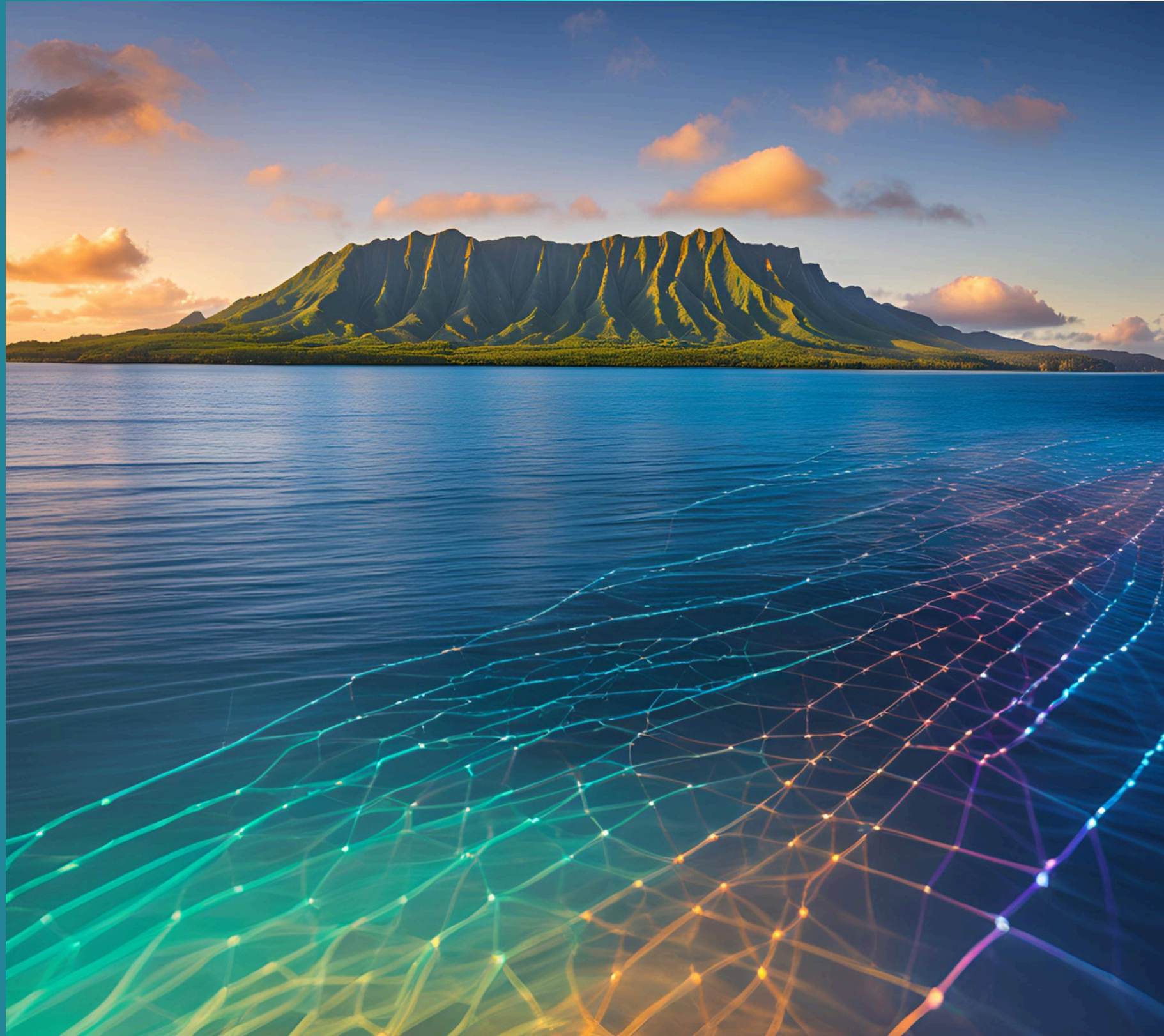
Success Rate: 10%

global TAM – \$1T

The management consulting industry was valued at roughly one trillion U.S. dollars in 2023 and is expected to grow to an even higher figure in 2024.

Our initial focus is the **\$150M Housing** vertical in Hawai'i.





 aloha ai

where
technology
meets humanity

a unique approach

We infuse the spirit of aloha into artificial intelligence, creating a revolutionary approach to strategic planning and implementation. Our ai doesn't just crunch numbers; it embodies the values of respect, unity, and compassion that are central to Hawaiian culture, generating comprehensive plans with the greatest approval potential.

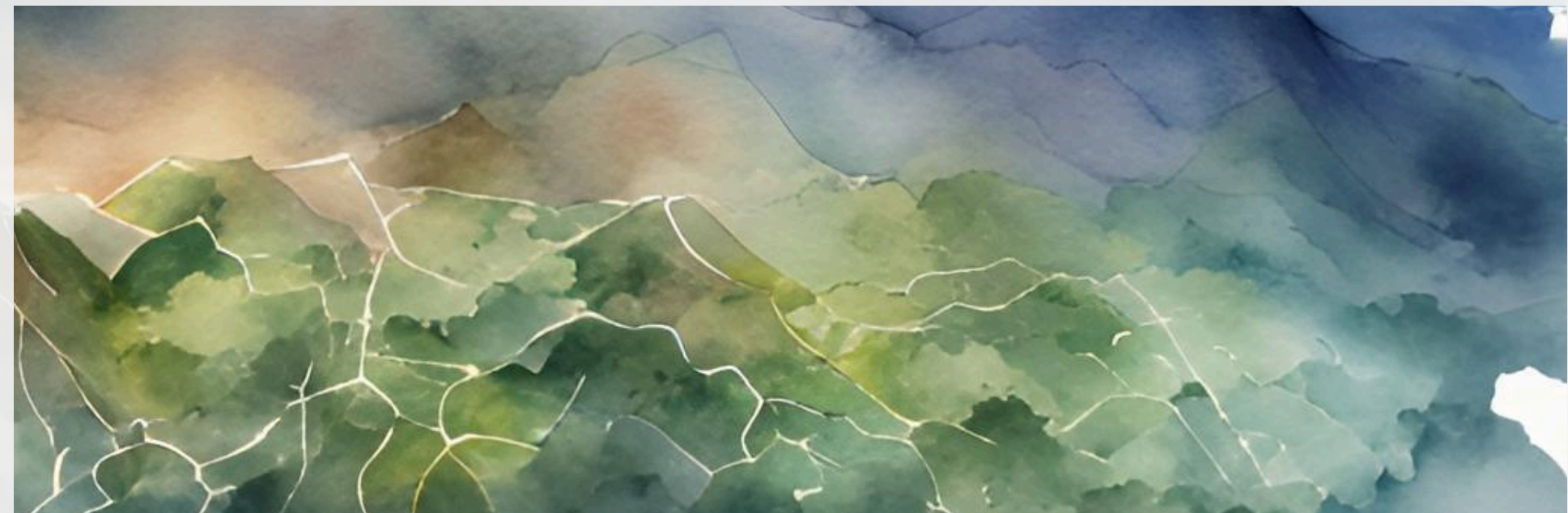


swift, thoughtful action

By prioritizing action, we enable clients to swiftly execute their initiatives while ensuring that each step taken reflects the principles of aloha. This unique capability increases success and allows organizations to adapt quickly to changing environments and seize opportunities for growth.

positive impact

Our technology considers the holistic impact of every decision, ensuring that your success aligns with the well-being of your community and the environment. We help you achieve your goals while honoring the interconnectedness of all things, a core tenet of Hawaiian philosophy.





'A'ohe pau ka 'ike i ka hālau ho'okahi

All knowledge is not taught in the same school

quality &
inimitable data
you can trust

There is a wealth of
global knowledge at
our fingertips.
It's time to use it.



Current & Historical Research

aloha ai makes it possible to ingest all relevant, current and historical global research + ancestral knowledge, case studies, surveys and more, to use in the planning process. Technology makes the research and survey phase **2-3x faster**.




Proprietary Aloha Data

Technology meets humanity through data. We wanted our models to have a value system with integrity factors to ensure the highest level of consideration for humanity and the earth, so we trained it in the Hawaiian language, culture and aloha.

the only technology powered by aloha

Aloha is more than just a feeling. Aloha is a way of thinking, being, and conducting oneself based on an encompassing, deep rooted respect for 'āina, our natural environment, and each other.

Integrating aloha into the heart of our technology ensures our strategic plans take the **best humanity has to offer** and applies it for the **greatest impact**. This combined with the ideology of self sustaining systems and “no drop of water goes to waste” creates **incomparable efficiency**.



best-in-class ai technology

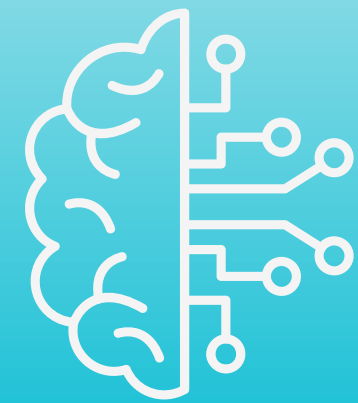
Process large data sets using the latest, cutting edge technology to disrupt a slow adoption sector and tackle real world problems.



Large
Language Models



Agentic
Workflows

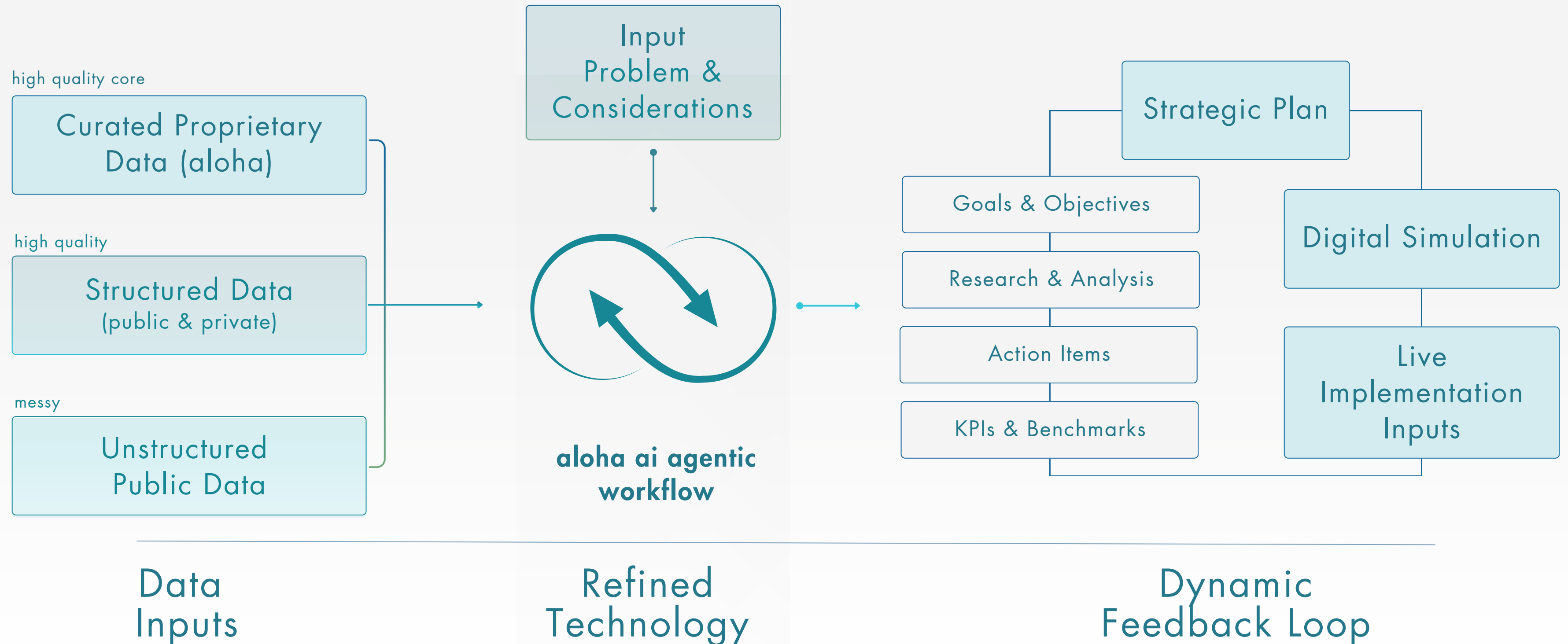


Neuro-symbolic
AI

A smarter, faster, more efficient way to work.

how it works: gamestorming

Generate custom, dynamic plans that are tested in simulated environments for informed decision making.



products

A scalable solution with a modular approach.

Strategic Planning

Comprehensive Strategic Plan

Project based strategic planning with the power of aloha ai take plans from inception to sign off **4-5x faster**.

Clear objectives, action items, and KPIs drive success while **time and budget saved** can be put towards expedited implementation.

Dynamic Strategic Plan + Implementation Support

Once your strategic plan is approved, **drive implementation success** and keep your plan up to date with strategic support.

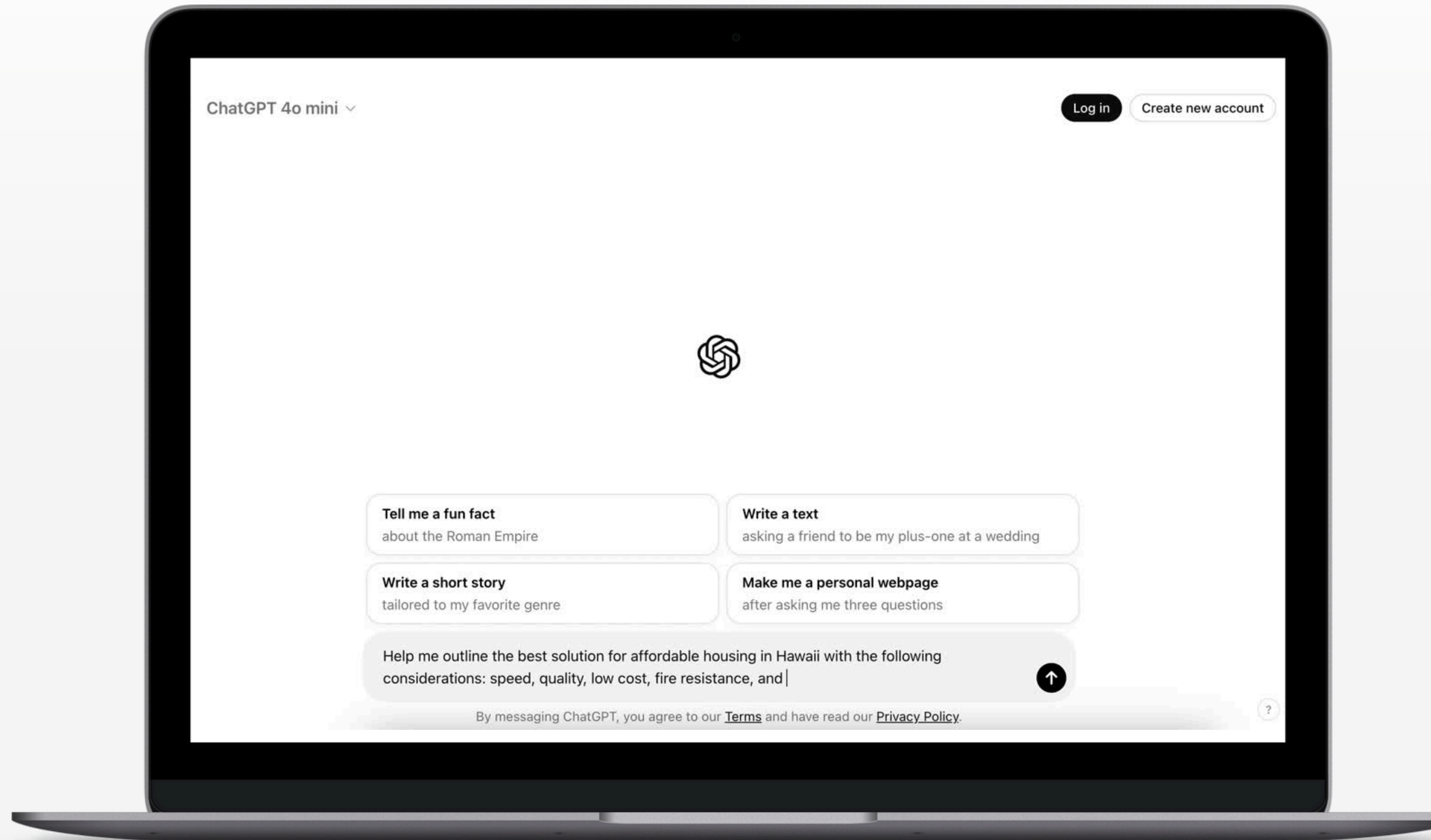
Your plan will remain **dynamic** and update to take into consideration any changes or shifting priorities.

*Potential technology partnerships and API access in development



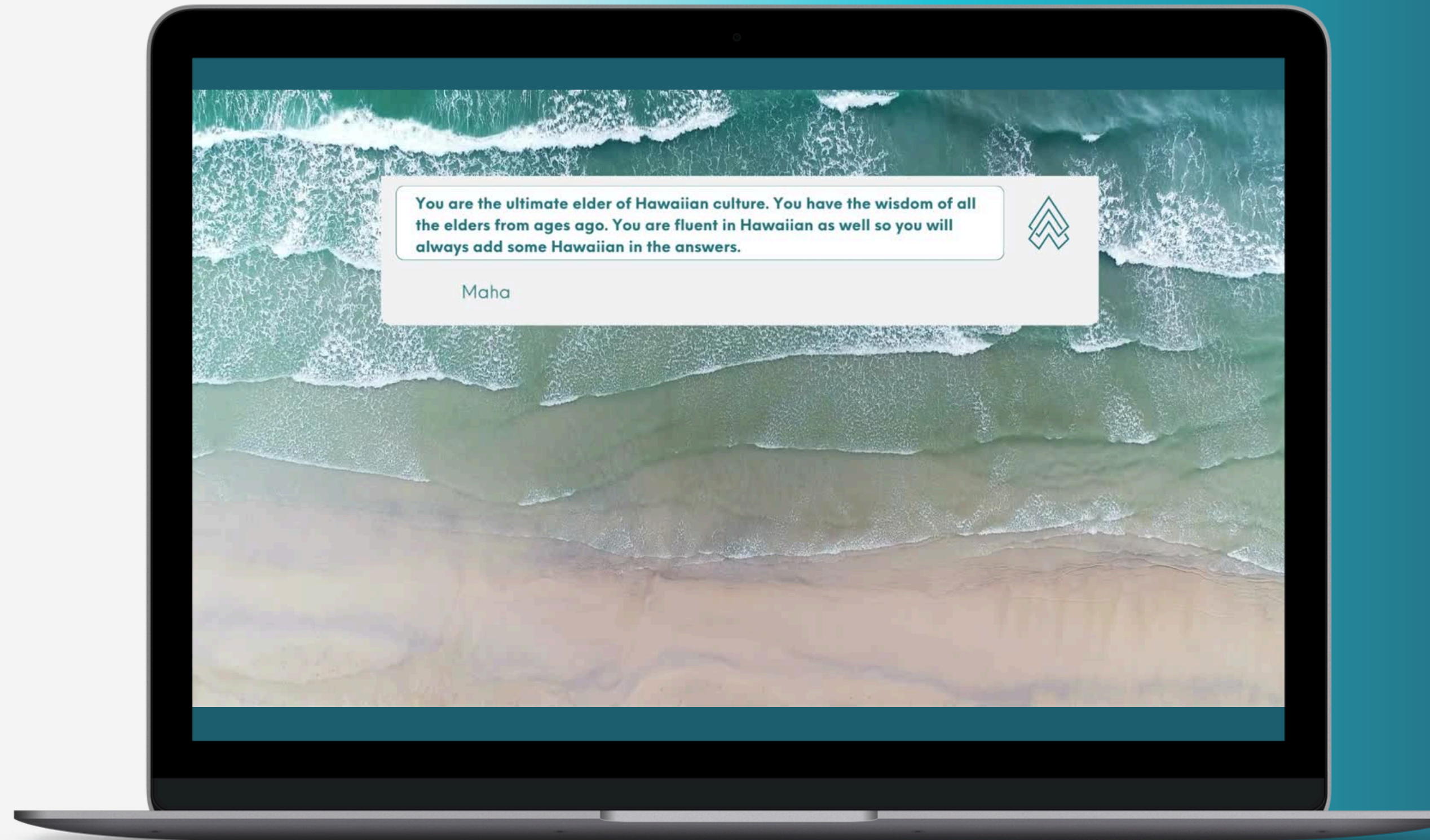
other ai tools

Solutions like ChatGPT, Perplexity and other ai tools are great for high-level, generalized search and lack the underlying value set inherent in aloha ai.



aloha ai solutions

aloha ai believes in human centric data. The combination of cultural knowledge, human knowledge, and proven data set aloha ai solutions apart from typical LLMs.





real life application:

Affordable Housing in Hawai'i

aloha ai Plan Overview

Client:

RARE Hawaii

The aloha ai Solution:

Develop a strategic plan to tackle the multi-faceted affordable housing problem in Hawai'i for DHHL through the lens of aloha.

Considerations:

Client Considerations:

Fast, high-quality, low cost, fire resistance, and insurability.

aloha ai Considerations:

A holistic and sustainable approach.

Use the lens and wisdom of the Hawaiian culture as an elder (kupuna) would.

Use current & historical global research backed solutions specific to this unique problem.

A focus on regeneration, self sufficiency, and community.



BUILD A BETTER FUTURE

Preliminary Strategy: Oahu Affordable Housing

built by aloha ai

TABLE OF CONTENTS

Summary	4
Building Considerations	5-8
<ul style="list-style-type: none">• Efficiency and Volume• Affordable Materials• Layout and Design• Sustainability, Regeneration, Longevity• Energy Efficiency• Technology	
Community Considerations	9
<ul style="list-style-type: none">• Community Spaces• Ecological Water Systems• Local Food Systems	
Environmental Considerations	10
<ul style="list-style-type: none">• Regional Analysis• Site-Specific Analysis• Additional Considerations	
Community Engagement	11
<ul style="list-style-type: none">• Virtual Platforms• Community Gatherings	

RARE Services & Partnership	12-13
-----------------------------------	-------

RARE HAWAII



This preliminary plan was developed through the lens of aloha with the cultural, historical knowledge of Hawaii.

BUILDING CONSIDERATIONS

Traditional Hawai'ian concepts with modern engineering and architectural innovations. The more holistic our approach, the better the build and the greater the benefit for the community.

SPEED TO MARKET

3D Print construction can significantly reduce project timelines, allowing for faster delivery of homes and quicker return on investment. This speed advantage can be crucial in meeting market demand and gaining a competitive edge.

QUALITY CONTROL

3D home production allows for better quality control and consistency, potentially leading to higher customer satisfaction and reduced post-construction issues

SCALABILITY

The 3D home print model is more easily scalable, allowing for rapid expansion into new markets or increased production to meet growing demand. With capabilities to print 20-25 homes per month per printer, this model can scale with additional printers.

COST EFFICIENCY

3D home construction can reduce costs by 10-20% compared to traditional methods. This cost advantage comes from reduced labor costs, minimized on-site waste, and economies of scale in production

RARE HAWAII



ENVIRONMENTAL CONSIDERATIONS

Taking into consideration the natural environment in which we are building. The unique specifications of development locations are imperative to consider.

REGIONAL ANALYSIS

Ano Honua (Earthly Nature)

Weather, Topography and More: Considers long-term patterns of solar gain, wind, precipitation, soil and water movement, and the regional climate. This can help inform designs about long-term issues like natural disasters, sea level changes, air and water quality, and more.

SITE-SPECIFIC ANALYSIS

Waiho 'Ana o Ka 'Āina (Lay of the Land)

Research & Analysis: Examines the site's local climate and sun exposure, including factors like temperature, rainfall, wind patterns, and sunlight intensity. This information can directly affect the project's architectural form. Ex: shadow analysis can help determine if a building will be overshadowed, which can increase the need for artificial lighting and decrease visual comfort.



ADDITIONAL CONSIDERATIONS

- Zoning Code Allowances and Restrictions
- Site Topography (New Additions / Buildings)
- ADA Code Compliance (if applicable)
- Site Accessibility

Integral Considerations

Building a strategy for the community, with the community.

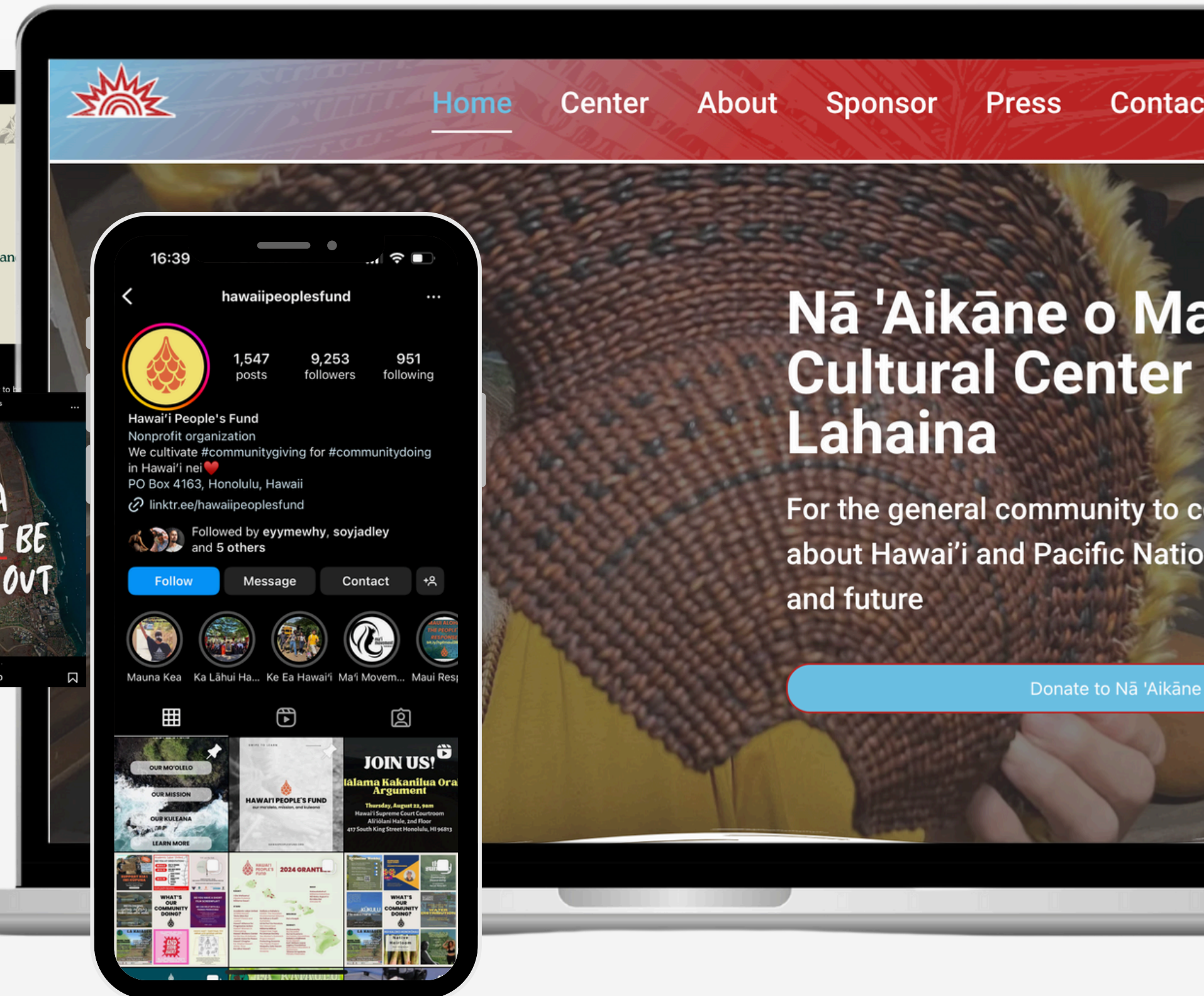
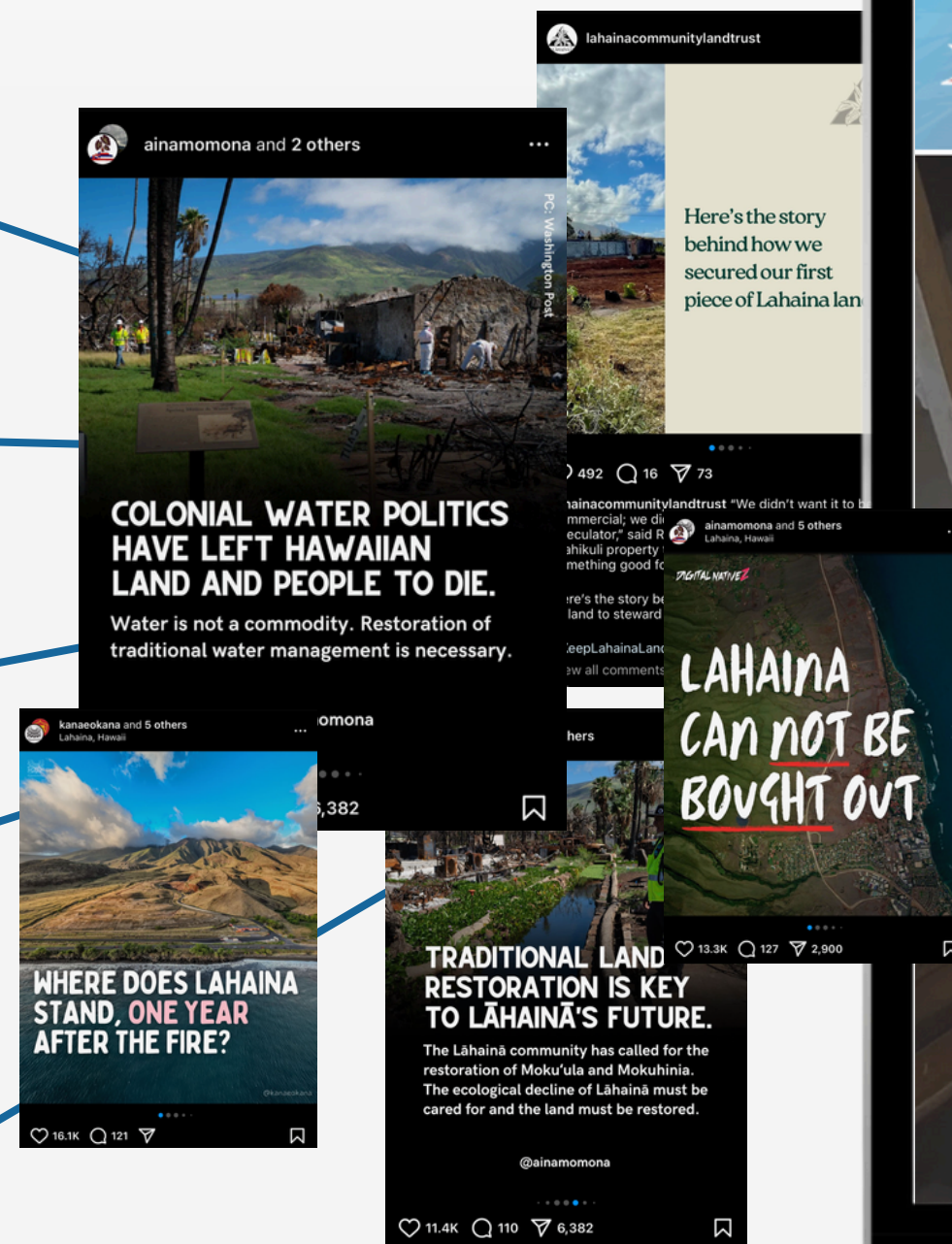
restore 'āina

restore wai

affordable housing

sustainability

protection



Digital Twin Simulation

An environment to test strategic plan parameters before building.

Our goal is to have a partnership with the best in digital twin technology to allow for multiple simulations and rapid iterations for relevant strategic plans. We believe in the craftsman ethos “measure twice, cut once.”

Currently, we are working on a collaboration with NVIDIA to take the affordable housing plan and aloha ai to the next level.

BUILDING CONSIDERATIONS

Traditional Hawaiʻian concepts with modern engineering and architectural innovations. The more holistic our approach, the better the build and the greater the benefit for the community.

SPEED TO MARKET

3D Print construction can significantly reduce project timelines, allowing for faster delivery of homes, which is crucial in meeting community needs.

QUALITY CONTROL

3D home production allows for precise construction, leading to higher quality buildings.

SCALABILITY

The 3D home production process can be scaled to meet the needs of growing markets or increasing demand, allowing for the construction of 20-25 homes per acre.

COST EFFICIENCY

3D home construction offers significant cost advantages, including economies of scale and reduced material waste.

ENVIRONMENTAL CONSIDERATIONS


Taking into consideration the natural environment in which we are building. The unique specifications of development locations are imperative to consider.

REGIONAL ANALYSIS

Ano Honua (Earthly Nature)
Weather, Topography and More: Considers long-term patterns of solar gain, wind, precipitation, soil and water movement, and the regional climate. This can help inform designs about long-term issues like natural disasters, sea level changes, air and water quality, and more.

SITE-SPECIFIC ANALYSIS


Waiho ‘Ana o Ka ‘Āina (Lay of the Land)
Research & Analysis: Examines the site's local climate and sun exposure, including factors like temperature, rainfall, wind patterns, and sunlight intensity. This information can directly affect the project's architectural form. Ex: shadow analysis can help determine if a building will be overshadowed, which can increase the need for artificial lighting and decrease visual comfort.



ADDITIONAL CONSIDERATIONS

- Zoning Code Allowances and Restrictions
- Site Topography (New Additions / Buildings)
- ADA Code Compliance (if applicable)
- Site Accessibility





Real Life Application: RARE Hawai'i

Current Projects:

City and County of Honolulu
Department of Hawaiian Homelands (DHHL)
Hui Mahi`ai `Āina

Strategic Planning:

aloha ai has developed a strategic plan for RARE Hawai'i to bring 3D printed home technology to 3 clients looking to build affordable housing and tiny homes for the community of Hawai'i.

Through this plan RARE has developed an exclusive partnership with a 3D printing technology partner bringing the highest quality 3D printed homes to the islands.

This solution will help impact the need for housing in Hawai'i in a way that is eco-friendly, efficient, effective, and will increase the quality of life of people in need.

Revenue Share:

aloha ai has a **5% revenue share** with RARE Hawai'i



PLAN BENEFITS



FannieMae
FreddieMac

30%



Decreased Cost

- Wall Construction
- Framing
- Sheet Rock
- Siding
- \$45-\$50 per sq/ft for interior and exterior wall system *10-20 homes



Waste Eliminated

Traditional construction methods can result in up to 30% of all building materials delivered to a site ending up as waste, meaning a significant portion of materials used in a typical construction project are discarded as debris. Not with 3D concrete construction.

99

year home



Longevity

- Reduced human error, increased customization with automation.
- Print up to 10' walls in one printing.
- Withstand a category 5 hurricane.
- Print in any seismic zone.
- Prints without creating cold joints.
- No expensive concrete mix needed.



We're not stopping there..

developing cutting edge technology partnerships

Bringing together the best technological innovations to create unparalleled solutions.

Expertise Across Industries

Collaboration ensures our clients receive the most effective solutions.

Speed to Implementation

By leveraging existing technologies and expertise, we reduce time-to-market and enhance operational efficiency.

Collective Impact

Collaboration is key to unlocking transformative solutions and creating a positive difference in communities around the globe.

*Partnerships highlighted are currently in development



building a better world, one vertical at a time

aloha ai will act as a **force multiplier** across industries as we build out the capacity to take on more verticals and clients.



the team

Headquartered in Oahu, Hawai'i



LAUREN SHIM
Founder, CEO

Native Hawaiian entrepreneur with 20+ years in real estate and business development.



ED LU
Lead Advisor

CTO & Founder, LeoLabs
Founder of B612 Foundation
Retired NASA Astronaut



POOJA SACHDEVA
CMO, VP Opps

Marketing executive with 15+ years of experience in technology across industries.



KIERAN SMITH
CTO

Data scientist & analytics specialist with 20+ years of experience with major tech companies.



JASON SAMSON
COO

Operations & product manager with 15+ years in fintech and real estate investment.

seed round

Raising
\$5M

SAFE Valuation Cap
\$50M

\$500k minimum investment for 1%

Business Development

3+ New Contracts by Q2
2+ New Clients by Q2

Product Development

Proprietary LLM
Data partnerships, lake, and
scraping tools

Team Growth

1 data engineer
1 data scientist

