

# QUILT TALK



OFFICIAL PUBLICATION OF THE CHULA VISTA QUILTERS GUILD

VOLUME 44, ISSUE 10

MAY 2026

## OFFICERS 2025-2026

### PRESIDENT

Janelle Hickey

### 1ST VP | PROGRAMS

Jan Mellinger

Lindy Wilhelm

### 2ND VP | NEWSLETTER

Amber Myers

ChulaVistaQuiltersGuild@gmail.com

### SECRETARY

Susan Bellis

### TREASURER

Sharon Kirkwood

### PRESIDENT EMERITUS

Cheryle McCullough

### SCCQG REPRESENTATIVE

Donna Mallen

## PRESIDENT'S MESSAGE

This is the month! It's here! Our highly anticipated show on May 15 and 16. Many people, not in our guild have expressed to me how much they look forward to it every year. I hope you are inviting everyone you know.

All available hands are needed to help the days before to set up and to assist during the show. Please do what you can, and any strong strapping men you can wrangle in would be most welcome. We'd like the help even if they aren't strong and strapping *but it does add more interest.* *[Editor emphasis]*

Thank you to the ladies who have taken our opportunity quilt to other guilds. We appreciate your time.

Lots of hours have been spent behind the scenes to make this happen. We all know who you are so I won't list the individuals. I want you to know we see it, we recognize the work, and appreciate all you do. It's not a paying job but it shouldn't be a thankless job. Thank you ladies!

Let's have a great show. I'll see you there.

- Janelle

## INSIDE THIS ISSUE

- GUILD NEWS & REMINDERS
- PROGRAMS + WORKSHOPS
- QUILT SHOW REMINDERS
- BOUTIQUE & SEW + CRAFT
- WHO'S WHO 19 & 20
- THE YEAR AHEAD



## UPCOMING EVENTS >>>>

### NEXT MEETING

WEDNESDAY, MAY 13, 2026  
SOCIAL BEGINS AT 6:00 PM  
MEETING BEGINS AT 6:30 PM

CHECK OUR UPCOMING MEETINGS AND EVENTS  
ON THE GUILD WEBSITE

[WWW.CHULAVISTAQUILTERSGUILD.COM/CALENDAR](http://WWW.CHULAVISTAQUILTERSGUILD.COM/CALENDAR)

# GUILD NEWS + REMINDERS

## CHAIRPERSONS 2025-2026

### BLOCK OF THE MONTH

Karen Collin

### CHALLENGES

Maureen Waterhouse

### CUDDLE QUILT

Pat Doege

### DOOR PRIZES

Burma Dunn

### GREETERS

Melody Cernitz

### 50-50

Joette Fredricksen

### FAT QUARTER RAFFLE

Janice Lambert

### HISTORIAN

TBA

### NEW MEMBER HOSTESS

Jeri Nolfi-Brown

### MEMBERSHIP

Janice Lambert

### OPPORTUNITY QUILT 2026

Karen Collins

### PROGRAMS

Melody Cernitz

### QUILT SHOW 2026

Laurel Maloney

Kathy Cadwell

### REFRESHMENTS

Shawnie Meeks

### RETREAT

Rebecca Davidson

### SOCIAL MEDIA

Gloria Sawyers

### TICKET SALES

Susan Allers



## WEDNESDAY QUILT CLASSES



### EVERY WEDNESDAY | 9AM-12PM

Classes offer a variety of quilting methods led by multiple instructors. Enrollment is open, come when you can, by donation only.

Contact: Susan Bellis

Location: Bayview Orthodox Presbyterian Church  
505 East Naples St. Chula Vista 91911

## NEXT MEETING

### SWAP TABLE

**NOTE:** There will be no swap table at the meeting in May due to the quilt show. **Please put your items in the quilt show sew and craft booth.**

Thank you, Carolyn

Any questions—contact Carolyn Dexter at 619.349.2861

### REFRESHMENTS

**MAUREEN WATERHOUSE**  
**SHAWNIE MEEKS**

### GREETERS

**Cheryle McCullough**  
**Maureen Waterhouse**

**REMEMBER TO BRING:** Name Tag | Guests & New Members | \$ for 50:50 Drawing | Fat Quarter for FQ Drawing (see chart below for color/pattern) | Rope Bowl Class Payment | House blocks for block of the month swap

**BRING ANY COMPLETED BLOCKS FOR  
THE GUILD OPPORTUNITY QUILT**

## MONTHLY FAT QUARTER RAFFLE

January - Red  
February - Greens  
March - Flowers/Showers

April - Showers  
May - Beachy  
June - Red, White + Blue

July - Summer  
August - No Meeting  
September - Halloween

October - Fall Colors  
November - Christmas  
December - Your Choice

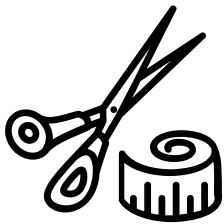
## GUILD NEWS

**REMINDER: ANNUAL DUES ARE COMING UP!**  
**PLAN TO BRING YOUR DUES TO THE JUNE MEETING.**

.....

### **FROM THE TREASURERS DESK.... SHARON KIRKWOOD**

For anyone who has reimbursable expenses for the quilt show please bring the proper receipts to May meeting. Pickup up the expense claim sheet from me, fill out fully and I'll write you a check before end of meeting. This will help keep our financial information up to date. Thanks so much for what you do for the guild.



### **SCISSOR SHARPENING - AT THE QUILT SHOW**

Bring your scissors for sharpening Saturday! Cash only. \$6.00 each. Drop off and then tour the show. Pick up when you leave.

.....

A special gift will be presented to all the 1st time Quilt Show entrants at the June 10 meeting. Please come so we can celebrate your achievement. -Susan Bellis



.....

### **REMINDER: JULY WILL BE OUR SEW IN!**

Once the buzz of the show is over, plan to help prepare quilts for our philanthropic activities. Members can help hand tie, turn quilts, create quilt sandwiches, iron — and more. Have a machine you can bring with you? We will have many seats available to help get these quilts to the finish line!

Now is a great time to finish up any cuddle quilt kits you have on hand in preparation of our sew in.

## GUILD NEWS

**REMINDER: ANNUAL DUES ARE COMING UP! PLAN TO BRING YOUR DUES TO THE JUNE MEETING.  
THANK YOU**

.....



### OPPORTUNITY QUILT TICKETS

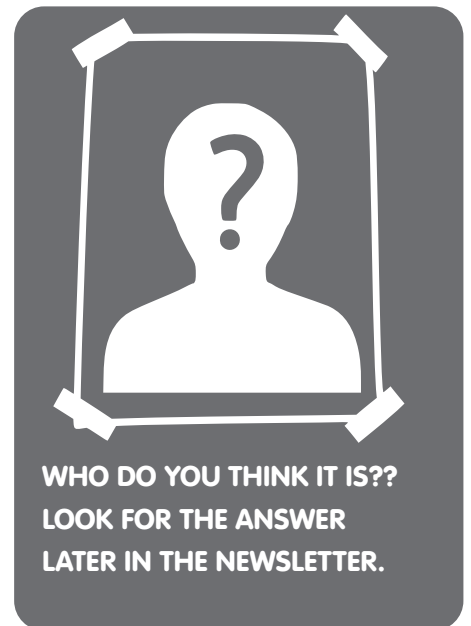
A BIG thank you to Susan Bellis and Shirley McGuire for taking the quilt to Village Quilt Guild and to Janelle Hickey and Gloria Sawyers for taking the quilt to People of Color Quilt Guild. Taking our opportunity quilt to other guilds generates several hundred dollars for us each year. BRAVO ladies.

## WHO'S WHO IN OUR GUILD?

### WHO'S WHO #19

After reading the facts below, see if you can pin-point which member has:

1. She was born in the Oakland Bay Area. She was a competitive swimmer and her event was the backstroke. She was the alternate for the '64 Olympics.
2. She has seven children and birthed them in four decades. She has four daughters and three sons.
3. She lived in Alaska for eight years. It was before the road was paved and the oil line was in. She had two home births, burned 10-15 cords of wood a season, learned to use a chainsaw, and ate home baked bread.
4. She started sewing when she was 5 years old and made a wedding dress for her doll.
5. Her father was an electrician. He taught her carpentry. She was curious about how things work.



WHO DO YOU THINK IT IS??  
LOOK FOR THE ANSWER  
LATER IN THE NEWSLETTER.

## GUILD NEWS

### **Please fill out and bring to May Meeting Nomination for CVQG Distinguished Service Award**

The CVQG board, would like the guild to recognize members who have contributed to the guild by donating their time and expertise in exceptional ways for many years. So many of our members have given so much to make this guild the great place it is to socialize, network and improve our quilting skills. It's time to let them know that we appreciate it.

**Please note:** Officers are not eligible because they are doing the selecting from your nominees.

#### **Previous recipients:**

2014 Janet Stevenson, Nancy Higgins, Sue Yamaguchi

2015 Melody Cernitz, Burma Dunn

2016 Joyce Parker, Pat Doege

2017 Brenda Moore, Mary Anna Carr, Pat Flipse, Nonna Fontenot

2018 Kathy Cadwell, Susan Allers

2022 Janice Lambert

2023 Laurel Maloney, Karyn Slade

2024 Maureen Waterhouse

2025 Jeri Nolfi Brown

---

### **Nomination for CVQG Distinguished Service Award**

Who do you think deserves this honor? Please give us as many reasons as you can for why you are nominating this person. If you wish to nominate more than one person, do so. Please only nominate one person on each form.

I would like to nominate: \_\_\_\_\_

I think he/she deserves this honor because (continue on the back if you need more room)

Your name in case we have any questions about the information you've given

Your Name \_\_\_\_\_

## GUILD NEWS

### Burma Dunn, 2026 Volunteer of the Year County of San Diego, Registrar of Voters



Our very own Burma Dunn was honored on April 21<sup>st</sup> as the Volunteer of the Year for the County's Registrar of Voters Office. Along with about fifty other people from various departments in the county, Burma was recognized with a lovely breakfast buffet, followed by a full ceremony attended by all of the County Supervisors, Registrar of Voters Shawn Brom and Recruiter Kim Lange. Burma has contributed over one thousand hours of service at various polling locations since 2002, moving up from worker to Poll Supervisor. Congratulations, Burma, on a job well done!



(L) Burma with County Supervisor Paloma Aguirre (R) Burma with her Volunteer of the Year Medal

### PHILANTHROPY IN ACTION

This month the CAST graduation was attended by Pat Doege, Susan Bellis and Janelle Hickey. CAST stands for Chula Vista Citizen's Adversity Support Team who offers 24 hour trauma support on a voluntary basis to our community on their worst day. The six graduates were presented with quilts which they carry to gift to individuals in crisis. Their coordinator tells me each CAST member keeps a quilt in their kit when needed. Our guild has been gifting them for several years. The Chula Vista police chief and fire chief both told us how much our efforts mean. We were carrying extra just in case and the coordinator gratefully accepted them so we gifted a total of ten. I would encourage any of you who could to make one quilt to gift them. A throw size with adult patterns are most needed as cuddle quilts are not always appropriate. I'm challenging us ladies. Let's see what we can do. They will reach out at Christmas again as they work with the fire department to gift to those in need. Let's scrap bust ladies and make a difference for those who need us.



**PROGRAM GRADUATES WITH THEIR QUILTS**

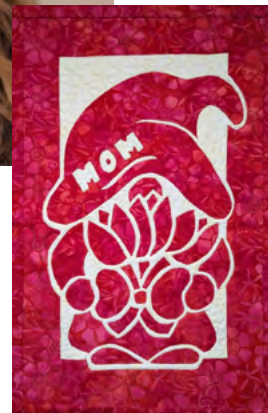
## MAY PROGRAM + UPCOMING WORKSHOPS

### **DANA KEELER | PACIFICRIMQUILT.COM**

Our Speaker for May is Dana Keeler, owner of Pacific Rim Quilts. Her lecture is "Stitched in Tradition: Hawaiian Quilting". Although both her Mom and Grandmother were fabric people, Dana came to quilting through Hula Dancing.

Although I learned to sew as a child, she didn't start sewing again until her 30's when she and her daughter started dancing hula and had to make their own costumes. It wasn't until the passing of her mother that she found quilting as a passion.

She joins us from the Pacific Northwest with her gnomes and Aloha.



## UPCOMING WORKSHOPS

Chula Vista quilt guild is sponsoring two workshops. There are only a few openings in each one if interested please email Robyn Phelps [rlpetna1@cox.net](mailto:rlpetna1@cox.net).

### **BARBARA BLANTON OCTOBER 15TH AT MT MIGUEL COVENANT.**

Barbara is the founder of the applique academy held each year in Williamsburg, Virginia. She understands that some call applique the dreaded 'A' word; but guarantees that with her patience and humor students will love this art form by the end of the class. She will be doing a trunk show the night before the workshop.

\$40 dollars with \$25 kit fee.

### **BETH UPSTILL NOVEMBER 12, MT MIGUEL COVENANT**

\$40 with required book Garden of Embroidered Bugs, \$20. There is an optional kit. I am working with Beth on bringing book and kits with her. This is a wonderful book! Beth owns West Coast Wool, specializing in hand dyed wool and applique. She is a wonderful teacher. She will be our guest speaker the night before the workshop.



## FEELING LUCKY?

### WHAT DO YOU DO WITH YOUR DYED FAT QUARTER?

We got into it last meeting with Cindy Lohbeck and her dying mini workshop. ( my hands were blue for a week!) And, every one of the dyed fat quarters I have seen are wonderful! BUT, what do you do with one dyed fat quarter?

For next meeting,

Cut 8 1/2" squares..( fold it in fourths and cut 4 or fussy cut one or two)

To each 8 1/2" square add a white or white on white border

cut 2" X 40" then cut down to

2 2" X 8 1/2" and

2 2"X 11 1/2"

Finished block will be 11 1/2"

**BRING YOUR FINISHED BLOCK(s) TO MAY MEETING.**

For each block you turn in get one chance to win them all. Turn in 4 blocks and get 4 chances!

Depending on participation, the winner will take home enough blocks to make a bright and lively throw or a bed sized quilt!



Questions? Call Melody 619-370-7775.

## QUILT SHOW NEWS



### It's Time!! Quilt Show and Vendor Mall Schedule Set up, May 13 and 14, 2026 Show Dates: May 15 and 16, 2026

1. Wed morning, May 13, 9 am. - furniture removal and rearrangement as necessary in the display rooms. Thanks to Pat Doege, Gloria Sawyers, Jan Mellinger, and Shirley McGuire for volunteering to transfer our equipment from the Congregational Church to Bayview.
2. Wed, May 13, at 1000 - Hoffman Challenge Set up - Brenda Moore, Curator. Carmen Richardson and Erika Weber will be hanging the exhibit.
3. Wed, May 13, 1000 – 2 pm. Quilt take-in - Note the new times, 10 am to 2 pm. See the “Quilt Turn-In Instructions” on the entry form for further information. Remember to FOLD your quilt according to the instructions, it makes take in much faster. **If you can't turn in your quilt at this time, have a friend bring it or contact Joy Miller, Jeri Nolf-Brown or Billie Crino, our Take-in Chairs, to drop your quilt off early.** **NO ENTRIES WILL BE ACCEPTED ON THURSDAY!**
4. Thursday, May 14 - Main setup day - display the entries, arrange the items for the Boutique, Basket Raffle, Opportunity Quilt, and Sew and Craft Booth. We owe a big debt of gratitude to our booth chairs: Burma Dunn, Carmen Richardson, and Susan Bellis (Basket Raffle), Karyn Slade and Sherry Smiley (Boutique), Opportunity Quilt (Susan Allers), Gloria Sawyers and Lindy Wilhelm (Sew and Craft). **If you have things to sell, please bring them on Thursday morning.**
  - a. Some Vendors may also choose to set up on this date, thanks to the efforts of Debbie Elliott, our Vendor Chair.

## QUILT SHOW NEWS

- b. Be sure to thank our facilities coordinators, Pat Doege for Congregational Church and Nancy Teahan for Bayview. They provide access to all of our spaces and make any arrangements for equipment that we need. Chuck Teagan, Nancy's husband, also helps out with setup and take down, as do other members of the Bayview congregation. Please thank them if you see them, they are such a generous bunch to our guild!
- c. Please extend your appreciation to Jacque Blix and Joette Fredricksen, our Publicity Chairs. They updated and hung our banners outside the church, notified all Southern California guilds and sent out publicity information to a list of local assisted living facilities, a new endeavor this year. Here's hoping we have more people than last year at our show.
- d. Lynda Reynolds and Janice Lambert manage our Admission Desk, a very busy job!!
- e. Don't forget to thank Shawnie Meeks for her excellent work at setting up our entries, exhibit cards, Viewer's Ballots and program! She dedicates many hours of work to ensure the successful organization of the show!
- f. A very big "thank you" to those who have volunteered to set up the show: Karen Collin, Becki Edwards, Susan Allers, Shawnie Meeks, Gloria Sawyers, Suzy Q and her husband, Mark, Cheryle McCullough, Jacque Blix, Sherry smiley, Karen Carrick, Linda Caton, Jan Hubbard and all those spouses who come out to help!
- g. Melody Cernitz, our designer, will be directing Sharoon Kirkwood (Small Quilt Lead), Pat doege (Med Quilt Lead), Debbie Elliot (Large Quilt Lead), Robyn Phelps (Soft Creations Lead) and Maureen Waterhouse (Challenge Lead) and helpers in setting up the exhibit rooms.
- h. Pizza party for set-up crew and recognition of show subchairs to follow.**

### 5. Friday, 15 May and Saturday, May 16: Quilt Show

- 6. Saturday, 16 May at 3:15 pm. – Show Take Down and equipment return to the Congregational Church basement storage area. We expect EVERYONE to help with take down and transfer of equipment back to Congregation Church (according to your abilities), but the following people have signed up now to help: Susan Bellis, Amber Myers, Joette Fredricksen, Jacque Blix, Becki Edwards, Ericka Weber and Kathy Glen.

Thanks to all of the people who have helped organize, set up, make entries and take down our show. We couldn't put on the largest annual quilt show in the South Bay without your assistance!

Laurel Maloney and Kathy Cadwell, Quilt Show Co-chairs

# QUILT SHOW NEWS | SEW + CRAFT AND BOUTIQUE

## SEW & CRAFT

### Donate, Declutter & Support the Sew & Craft Sale!

The Sew & Craft Sale at the 2026 Quilt Show is looking for your extra sewing and craft supplies—turn what you're not using into something valuable for our community.

We gladly accept items like thread, notions, rulers, patterns, yarn, and fabric. Sewing machines and cutting machines were especially popular last year, so we'd love more of those!

### Ready to contribute? Here's how:

Bring your items to the Sew & Craft Room when you drop off your quilts.

Tag each item with your number and price, or use the guild's number (#100) with a price.

Bundle fat quarters, larger cuts, and precuts in plastic bags—they sell best this way.

Notions, rulers, patterns, and machines are always in demand.

### Important:

If you'd prefer your unsold items not be discounted or donated to Goodwill, please pick them up by 1 PM on Saturday, May 16.

Have questions or want to coordinate a donation?

Contact Gloria Sawyers at 619-254-1704 (call or text).

### Sample of Tag:

# \_\_\_\_ Boutique ID #

\$00.00 (price of item)

# \_\_\_\_ Boutique ID #

\$00.00 (price of item)

## BOUTIQUE ITEMS

Hope you have been busy making items for the 2026 CVQG Boutique. We encourage all members to make handcrafted items for the Boutique. If you wish to sell your handcrafted items in the Boutique, you will need a Boutique # (contact Karyn Slade for your #). Each item must be tagged as follows with your Boutique # & price like the image above.

**Please bring you Boutique items to the "Boutique Room" on Wednesday, May 13th between 10:00 am - 2:00 pm or (show set-up day) Thursday, May 14th before 11:00 am.** The CVQG will take 15% and you will receive a check in about a week for the remaining 85% or the price of all the items that you sold.

Karyn Slade (619) 425-5639

krsquilts@yahoo.com

## GUILD NEWS



THE ANSWER TO WHO'S WHO #19  
IN OUR GUILD IS  
**SHERRY  
SMILEY**



### MARK YOUR CALENDAR | UPCOMING QUILT SHOWS

#### LOS ANGELES COUNTY QUILTERS GUILD

MAY 8 | 10AM - 5PM + MAY 9 | 9AM - 4PM  
SPORTS BASEMENT LONG BEACH | 2100 NORTH BELLFLOWER BOULEVARD LONG BEACH

#### HIGH DESERT QUILT GUILD

MARCH 13-14 2027, 10 AM TO 4 PM | \$7 ADMISSION  
DESERT EMPIRE FAIRGROUNDS  
520 SOUTH RICHMOND ROAD, RIDGE CREST, CA

## WHO'S WHO #20

After reading the facts below, see if you can pin-point which member has:

1. She was born in South Dakota and moved to San Diego when she was 5 years old. She graduated from Hoover High School.
2. She met her husband Square Dancing in Balboa Park. They had two children, a girl and a boy.
3. She worked for the Sheriff's department as a dispatcher for 9 years.
4. She worked for Sweetwater School District for 20 years and enjoyed it all, but her favorite job was secretary to the Assistant Principal at Olympian High School.
5. She and Janice Lambert did clogging together. Janice invited her to join the Quilters Guild.

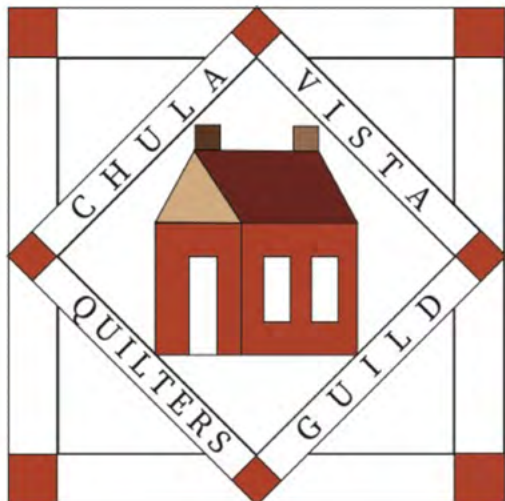
Find the answer to Who's who #20 later in the newsletter!

## THE YEAR AHEAD | CVQG 2026 PROGRAMS & WORKSHOPS


	SPEAKER	LECTURE/EVENT	WORKSHOP
JUNE	ANNUAL JUNE POTLUCK + QUILT SHOW RECAP		
JULY	CHARITY QUILT SEW IN		
JULY	MAUREEN WATERHOUSE	DYING WORKSHOP	WORKSHOP DETAILS TO COME
AUGUST	----- HISTORICALLY DARK -----		
SEPTEMBER	PHYLLIS CULLEN	IT'S ALL ABOUT THE FACE	POWAY WORKSHOP DETAILS TO COME
OCTOBER	BARBARA BLANTON	BETTER DONE THAN PERFECT	OCT 15 AT MT MIGUEL
NOVEMBER	BETH UPSTILL	ADVENTURES IN WOOL APPLIQUE	WORKSHOP DETAILS TO COME
DECEMBER	ANNUAL WINTER POTLUCK AND HOLIDAY BAZAAR		

**INTERESTED IN HELPING CHOOSE UPCOMING PROGRAMING? CONSIDER JOINING THE PROGRAMING COMMITTEE!**

## QUILT TALK



### CONNECT WITH US

 **The Guild Meets the 2nd Wednesday of each month at:**  
COMMUNITY CONGREGATIONAL CHURCH MEETING ROOM  
276 F STREET, CHULA VISTA, CA 91910  
Enter at the back, near the intersection of Church and Center Streets. Social begins at 6pm. Meeting begins at 6:30pm, program follows.

 [www.ChulaVistaQuiltersGuild.com](http://www.ChulaVistaQuiltersGuild.com)

 [www.facebook.com/chulavistaquiltersguild](http://www.facebook.com/chulavistaquiltersguild)

 [www.instagram.com/chulavistaquiltersguild](http://www.instagram.com/chulavistaquiltersguild)

 **Chula Vista Quilters Guild**  
P.O. Box 1668  
Chula Vista, CA 91912

### NEWSLETTER SUBMISSIONS

Please submit all newsletter articles to:

[ChulaVistaQuiltersGuild@gmail.com](mailto:ChulaVistaQuiltersGuild@gmail.com)

**Deadline is the 25th of the current month for publication the following month.**

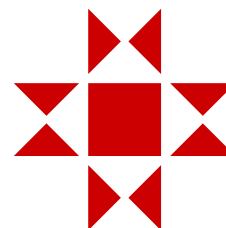
Thank you! - Amber Myers

**KEEP TRACK OF ALL OUR UPCOMING EVENTS AND BOOKMARK OUR CALENDAR ON THE WEBSITE:**

**[WWW.CHULAVISTAQUILTERSGUILD.COM/CALENDAR](http://WWW.CHULAVISTAQUILTERSGUILD.COM/CALENDAR)**



THE ANSWER TO WHO'S WHO #20  
IN OUR GUILD IS  
**JOETTE  
FREDRICKSEN**



### ADVERTISE IN OUR NEWSLETTER

AD WILL APPEAR FOR 11 ISSUES | RATES PER YEAR: BUSINESS CARD \$20 START ADVERTISING ANYTIME!  
Contact the Newsletter Editor at [chulavistaquiltersguild@gmail.com](mailto:chulavistaquiltersguild@gmail.com)