

QUILT TALK

Official Publication of the Chula Vista Quilters Guild

Volume 41, Issue 9

MAY 2024

www.chulavistaquiltersguild.com

Officers 2023-2024

President

Cheryle McCullough
cpagg@icloud.com

1st VP: Programs

Jan Mellinger
katraka@live.com
Lindy Wilhelm
jacksmiracle@gmail.com

2nd VP: Newsletter

Sylvia Jacintho
chulavistaquiltersguild@gmail.com

Secretary

Susan Bellis
sabellis52@cox.net

Treasurer

Sharon Kirkwood
illinoisgirl@cox.net

President Emeritus

Maureen Waterhouse
mlwaterhouse50@yahoo.com

SCCQG Representative

Donna Mallen
dmallen190@gmail.com

Inside this issue:

Updates/Reminders	2-3
Retreat.....	4
Guest Speaker	4
Treasurer's Report.....	4
Meeting Minutes	5
Quilt Tips - Sleeves	6
Bylaws Committee.....	6
Treasurer's Report.....	6
Service Award.....	7
2024 Quilt Show	8-12
Upcoming Events.....	13
Marketplace	14
Contact Details	15

PRESIDENT'S MESSAGE

Hello Guild Members,

May is a busy and an important month for our guild. Most importantly the CVQG quilt show, May 10 and 11th.

Please read the article by Kathy regarding volunteers needed for the show and other show information. You can help get the word out to the public by posting the show info on all social media platforms you belong to, telling friends and family, and sharing with other group affiliations. Hopefully your entries for the show are ready or will be very soon.

Our new portable sound equipment, which includes a powered speaker with Bluetooth and wireless microphone is small, but should work good. We will try it at the meeting, if time permits, and/or at the show.

There is a copy of the Distinguished Service Award Nomination form in the newsletter, page 7. Please fill out and give it to any board member prior to the May meeting. Award will be presented at the June Potluck.

Last, but not least, Janelle Hickey was nominated and voted in as our new President commencing July 1. Thank you, Janelle.

Hope to see you all at the meeting.

~Cheryle



NEXT GUILD MEETING
Wednesday, May 8, 2024
Social begins at 6:00 pm
Meeting begins at 6:30

GUILD REMINDERS/UPDATES



CHAIRPERSONS

BLOCK OF THE MONTH

Karen Collin

CHALLENGES

Laurel Maloney

CUDDLE QUILT

Pat Doege

DOOR PRIZES

Burma Dunn

50-50

Joette Fredricksen

FAT QUARTER RAFFLE

Janice Lambert

HISTORIAN

TBA

NEW MEMBER HOSTESS

Jeri Nolfi-Brown

MEMBERSHIP

Janice Lambert

OPPORTUNITY QUILT 2024

Maureen Waterhouse

QUILT SHOW 2024

Laurel Maloney

Kathy Cadwell

REFRESHMENTS

Melody Cernitz

RETREAT

Melody Cernitz

SOCIAL MEDIA

Gloria Sawyers

TICKET SALES

Susan Allers

Wednesday Quilt Classes

Bayview Orthodox Presbyterian Church

505 East Naples St,

Chula Vista, 91911

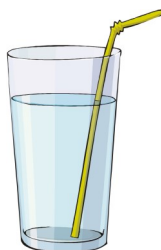
Every Wednesday starting

9:00 am -12 noon

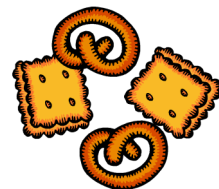
Classes offer a variety of quilting methods led by multiple instructors. Enrollment is open, come when you can, by donation only.

Contact: **Shirley McGuire** smcguire6@cox.net

REFRESHMENTS



Helen Davalos
Janice Lambert
Lindy Wilhelm



Newsletter Submissions

Please submit all newsletter articles to:

chulavistaquiltersguild@gmail.com

Deadline is the 25th of the current month for publication the following month.

Thank you.

2024 Quilt Show Boutique

I hope you've been making items for 2024 Boutique. We encourage all of our members to make handcrafted items for the Boutique, which many visitors say is one of the highlights of our show. If you wish to sell items in the Boutique, you will need a Boutique Number (contact Karyn Slade). Each item must be tagged with your Boutique Number and price. See the example below.

Please bring your items to the booth (Classroom 6):
Wednesday, May 8, 10 a.m. - 12 p.m. or
Thursday, May 9, 10 a.m. - 12 p.m. CVQG will take 15% and you will receive a check for 85% of the price of the all the items you sold.

Karyn Slade
619-425-5639
krsquilts@yahoo.com

Sample Tag

#Boutique ID

\$0.00

#Boutique ID

\$0.00

The demand is never-ending for quilts/table mats/animal beds/dresses & shorts/baby "stuff" to support our local communities: Meals on Wheels, victims of Maui, Operation Christmas Child, Children's hospitals, Senior homes, Gently Hugged, Silent Voices, Bags for Cancer, and many more so needs.

Please come and join in on our:

MONTHLY ON-GOING CHARITY/DONATION SEWING/CRAFTING SEW-IN

Meets the **first** Monday & Tuesday
(unless otherwise noted) of the Month

from 9:00 am till 2:00 pm

@

Mar Vista Baptist Church

888 5th Street

Imperial Beach, CA. 91932

Bring your sewing machine/supplies & basic sewing tools or crafting supplies and a donation project to work on. There are some projects available to work on as well as some donated fabric. Either bring a sack lunch or snacks to share with others, Coffee, water will be provided.

Here is the schedule for 2024 year (subject to change):

March 4th & 5th

April 1st & 2nd

May 6th & 7th

June 3rd & 4th

July 1st & 2nd

September 2nd & 3rd

October 7th & 8th

November 4th & 5th

December 2nd & 3rd

Sew & Craft Sale May 2024

The Sew & Craft Sale at the 2024 Quilt Show will be needing your extra sewing and craft supplies such as buttons, trims, rulers, patterns, and fabric for resale.

Sewing machines and cutting machines sold very well last year.

Bring them to the Sew & Craft Room when you drop off your quilts

Tag your items with your number and price or the guild's # (100) and a price.

Fat quarters and larger, precuts sell well in plastic bag. Sewing notions, rulers, patterns, magazine and machines.

If you don't want your leftover items marked down or given away to Goodwill, be sure to come get them by 1 PM on Saturday, May 11

To All,

I have been supporting this charity for many years. It is another way to recycle and to help our children. I am more than willing to take your cards and separate them for you. The "trademark" cards are used to make scratch pads for homeless and for the orphanages in Mexico.

Shawnie ☺ ☺



St. Jude's Ranch for Children Recycled Card Program

Yes! We are still accepting the fronts of your recycled cards (except for Hallmark, American Greetings and Disney which we are unable to accept due to copyright laws) as we continue to revamp our recycled card program in our effort to provide teens with life and work skills.

Please SEND to: St. Jude's Ranch for Children, 100 St. Jude's St., Boulder City, NV 89005.
Stjudesranch.org

We also accept new cards (any occasion) with or without the envelopes. Please do not send cards promoting other charitable organizations. We do not have any cards available to purchase at this time. If you have any questions, please call 702-294-7100.

You can also SUPPORT our programs which help children and youth break the cycle of abuse, abandonment and neglect. Thank you!

GUILD NEWS

Chula Vista Quilt Guild Fall Retreat

Join us in the heart of the Temecula Wine Valley to relax, retreat and recharge at the Vina de Lestonnac Retreat Center located at 39300 De Portola Rd., Temecula, CA. 92592.

The 2024 Guild retreat will be held October 24-October 27, 2024, and will be a fun filled weekend, so don't miss out. Sign up now and place your deposit at the next guild meeting.

Pricing:

4 days/ 3 nights-Thursday-Sunday

Single occupancy=\$770.00

Double occupancy=\$570.00

3 days/ 2 nights-Friday – Sunday

Single occupancy = \$555.00

Double occupancy = \$400.00

Bring your deposits to the guild meeting to reserve your spot. Please make checks payable to the CV Quilt Guild. Any Questions-please contact Rebecca Davidson @ radquilter40@yahoo.com or 619-370-0640.

MARCH SPEAKER

DONNA DWYER

Donna has been a quilter since 1999 when she became an empty-nester. She has made many quilts, mostly machine quilting them herself.

Donna makes baby and lap quilts for Palomar Hospital and enjoys the speed that she can finish them.

Donna works one day a week at Inspiration Quilt Shop in Valley Center. She enjoys meeting other quilters and sharing ideas with them.

MEETING MINUTES

March 2024 Meeting Minutes

General Meeting

- We are looking for hand quilters to finish Lilyana Coward's hexy quilt. Hand quilters are to meet at the Community Congregational Church, Tuesdays from 10 - 12 in the back room off the main meeting room.
- Lynda Reynolds will be selecting some of Judy Helton's quilts to be displayed at our May Quilt Show memorial.
- Janelle Hickey has graciously agreed to accept nomination for guild president.
- Janice Lambert reminded everyone to pay their dues.
- Susan Bellis passed around the participation labels that are to be sewn in this year's entries. If you find that you have extra labels, please return them at the next guild meeting or the Wednesday AM class.
- Susan Allers showed the stunning Opportunity Quilt. Volunteers are needed to take the quilt to other guilds and various organizations to sell opportunity tickets.
- Rebecca Davidson will start accepting \$50 retreat deposits for October's Temecula Retreat.
- Kathy Cadwell encouraged show publicity.
- Debbie Elliott has contracted six vendors for the quilt show.
- Hoffman Quilt Exhibit due to arrive April 29-30.
- Karen Collin provided two new blocks for Block of the Month
- Sharon Kirkwood reported on the Board meeting held at her home. Committee volunteers needed to revise outdated bylaws. All Officers are asked to read the description of their office to assist in any corrections or additions. Volunteers: Sharon, Burma, Donna, Cheryl, Jeri, Janelle, and Lynda.
- Shawnie reported on the philanthropic sew-in on the 1st and 2nd Monday and Tuesday of each month from 9 AM - 3 PM at her church, Mar Vista Baptist, 888 5th Ave, Imperial Beach. Refreshments provided.
- Christy won the fat quarters.
- Kathy Cadwell won the 50/50.
- Wednesday, May 8
 1. Hoffman Exhibit hanging day! Need a couple of people to climb ladders.
 2. Wed AM class will assist transporting quilt racks from Community Congregational Church to Bay View.
 3. Assistance also needed to unload truck full of Sew & Craft items.
 4. Quilt drop-off 10 AM -2 PM

Submitted by
Susan Bellis

QUILT TIPS

A NOTE ABOUT QUILT SLEEVES

1. Every quilt in our show needs a sleeve. Our goal is for each quilt to look its very best and they always look better with dowel or pipe through a sleeve.
2. Put the sleeve just under the binding (Fig 1).
3. Make the sleeve the width of the body of the quilt, ending just before the binding.
4. Some people sew it in with the binding, some tack it in place, some pin it; whatever works for you.
5. Ideally, put it in a contrasting color from the backing.
6. If the quilt is 100" wide or more, please apply the split sleeve method (Fig 2).



Fig 1. Sleeve sewn into the binding



Fig 2. Split sleeve method

Volunteers Needed: Join our ByLaws Revision Committee

We are in need of 2-3 additional individuals to join our current committee tasked with revising our current bylaws.

Our guild's bylaws are the foundation of our operations, guiding our decisions and actions. It is important that our bylaws are updated to meet our current needs and aspirations.

We invite you to be a part of this vital process.

The committee will convene on the following dates:

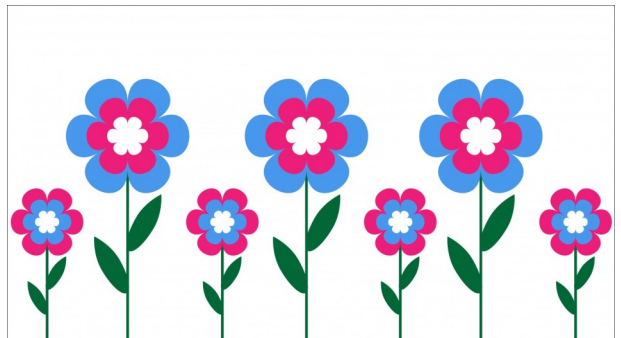
- July 13, 2024, 9 a.m. - 11 a.m.
- August 10, 2024, 9 a.m. - 11 a.m.

Meetings will be held at Sharon Kirkwood's house.

CHULA VISTA QUILTERS GUILD STATEMENT ENDING 3/31/2

	Beginning balance.	\$18706.28
Income.	817.00	
Expenses.	1425.71	
Ending balance.	\$18097.57	

Respectively remitted by Sharon Kirkwood, Treasurer



DISTINGUISHED SERVICE AWARD

Nomination for CVQG Distinguished Service Award

The CVQG board, would like the guild to recognize members who have contributed to the guild by donating their time and expertise in exceptional ways for many years. So many of our members have given so much to make this guild the great place it is to socialize, network and improve our quilting skills. It's time to let them know that we appreciate it.

Please note: Officers are not eligible because they are doing the selecting from your nominees.

Previous recipients:

2014 Janet Stevenson, Nancy Higgins, Sue Yamaguchi

2015 Melody Cernitz, Burma Dunn

2016 Joyce Parker, Pat Doege

2017 Brenda Moore, Mary Anna Carr, Pat Flipse, Nonna Fontenot

2018 Kathy Cadwell, Susan Allers

2022 Janice Lambert

2023 Laurel Maloney, Karyn Slade

Who do you think deserves this honor? Please give us as many reasons as you can for why you are nominating this person. If you wish to nominate more than one person, do so. Please only nominate one person on each form.

I would like to nominate: _____

I think he/she deserves this honor because (continue on the back if you need more room)

Your name in case we have any questions about the information you've given
Your Name _____

2024 CVQG QUILT SHOW



Our Show is almost HERE!!

If you've driven by Bayview recently, we hope you've seen the great publicity banners exhibited out in front, courtesy of Joette Fredericksen with an assist by Sharon Kirkwood. They very cleverly managed to change last year's dates to the current ones, courtesy of white duct tape and some paint. Great job, ladies!

We asked you to submit more entries to the show at our April meeting and you did not disappoint, we now have 163 entries (last year we had 118)! Thank you, Shawnie Meeks (Registrar), for putting the entries into a very user-friendly database. With the Hoffman trunks, we will be exhibiting more than 185 artistic creations, making this Show one of the largest in our history. Here are some statistics:

1. We have entries from forty-eight members, about 75% of the guild. (Last year we had less than 50% participation).
2. We have seven first time entrants (in a CVQG Show)
3. We have 33 Challenge entries, one of our largest Challenge Categories ever.
4. We have twenty-six large quilts and fifty-one medium quilts (last year, 16 and 42, respectively).

The number of large and medium entries posed a significant problem for Melody Cernitz, our Show Designer, as it exceeded the floor space we have available in our usual layout. However, with hard work and creativity, she has come up with a plan that we think will accommodate all entries. If it doesn't work, we will be calling some of our folks who have multiple entries in the large category and asking them to remove 1-2 entries. Please keep your fingers crossed!

Thanks to all our members who have signed up to work at the show. ***Since you must come by to pick up your entries, on Saturday anyway, please stay and help us clean up to the extent you are physically able.*** Remember, Bayview does NOT employ a custodian, so WE are responsible for returning the church spaces to normal.

2024 CVQG QUILT SHOW

Let's go over some final details:

Show workers and guild members!!!

1. Please wear your CVQG T-shirt if you have one and stop by the Admission Desk to pick up your paper flower lei. This will make it easy for guests to find someone to ask directions or questions. Please re-turn them on Friday and Saturday at the end of the show and we can use them next year.
2. Talk with our guests! Ask them what they like or don't like about the show and, if they are local, talk up the guild and Wed am Quilting Class. Brochures containing info about the guild and class are available at the Admission Desk, Sew and Craft Booth and the Boutique. The show is one of our best advertisements for getting people interested in joining the guild.
3. Free bottled water is available at the food service door for workers, just ask the ladies to give you one. There is also a water fountain to refill reusable bottles. Food service is available for purchase.
4. Please make sure that everyone, guild members, vendors and guests, respects the church spaces. Here are some general guidelines that we make all the vendors agree to. If you see anyone not complying, please ask them to stop or call Laurel or myself.
 - A. ABSOLUTELY NO FOOD/DRINK in the exhibit areas.
 - B. The usual fire/safety requirements must be met: no blocking of exits, fire extinguishers, bathrooms or sidewalks, no cords crossing the walkways. No open flames. Nothing attached to the walls, even tape, without specific permission from Nancy Teahan, our Bayview Facilities Manager.

Parking:

1. *Guild members, please park behind the church on the FAR grassy section to the right or left of the basketball hoop/play area.* This will free up parking for our guests. Pull in as far as you can, and we can park two cars deep.
2. **ABSOLUTELY NO PARKING ON THE GRASS IMMEDIATELY ADJACENT TO THE CHURCH BUILDING** (sprinkler damage). We will have this area roped off with stakes Bob Peterson made and yellow caution tape.
3. Unless you absolutely can't walk the short distance from the grassy area, **please don't use the handicapped spaces** as there are only four of them. Please leave them for our guests. During Thursday Set-up, the vendors will use these spaces to unload.

Publicity:

PLEASE help us get the word out about our show. Rosie Gonzalez has published a notice about the show in her shop's weekly sales e-mail during the last month and there have been a couple of posts by members on Facebook, but we need as much publicity as possible. Unfortunately, one of our best publicity options, QuilterzNooz, seems to be offline right now. Please publish on Instagram, Nextdoor, Twitter, FB, etc., and talk it up among your friends and neighbors. Thanks!

-Laurel Maloney and Kathy Cadwell, Show Co-chairs

2024 CVQG QUILT SHOW

Important Quilt Show Dates to Remember

Wed, May 8

0900 – Equipment Transfer from CCC storage to Bayview (courtesy of the Wed am Quilting Class, thank you!)

0900 – pre-staging of tables and moving furniture in exhibit spaces

0900 – Hoffman Set up

10 am - 2 pm Quilt Turn-in (Main Sanctuary) (If you can't make this time, contact Jeri Nolfi-Brown (jerinolfbrown@gmail.com) or have a friend turn your entries in)

10-12 Boutique Items Drop off

10-12 Sew and Craft Booth Items Drop off

Thurs, May 9

0900 – Brief Safety Meeting and work assignments, Main Sanctuary

0905 - Quilt Show Set up

10-12 Boutique Items Drop off

10-12 Sew and Craft Booth Items Drop off

Approximately 1200 – Pizza party for all workers and recognition of Show Subchairs, Courtyard

Friday, May 10

10-4 pm - Quilt Show

Sat, May 11

10-3 pm - Quilt Show

*2:30 pm - Basket Raffle Draw

*2:40 pm – Basket raffle drawing for first time entrants in CVQG Show

*3 pm - Opportunity Quilt Raffle Draw

Sat, May 11 3:10 pm

Members who have physical limitations, please monitor the tables in the courtyard where we will place the quilts after take down.

2024 CVQG QUILT SHOW

IMPORTANT QUILT DROP OFF INFO—PLEASE READ!!!

Delivering your quilt on Take in Day

- FOLD your quilt, RIGHT SIDE OUT, with top right corner of the entry as it will be displayed on top. This will speed up receiving your quilt at take in.
 - If it is not folded like the above description, you may be asked to wait for help until others have checked in their quilts. Thank you for your patience.
 - Bring your entries to Bayview Orthodox Presbyterian Church, 505 E. Naples St, CV, 91911, on Wed, 8 May, between 1000 and 2 pm.
 - If you need to arrange another drop off time/ place, you MUST contact Jeri Nolfi-Brown (jerinolfbrown@gmail.com)
-

IMPORTANT QUILT PICK UP INFO—PLEASE READ!!!

Entries must be picked up Saturday, May 11, between 3:30 and 4:30 PM.

- As quilts are taken down from the different areas, they will be taken to the patio area, where tables will be labeled (Large Quilts, Medium Quilts, etc.) with the categories the entries were in. If you need help, we will be there to help you find your entries.

• ***We expect all members, if physically able, to help with show Take Down BEFORE you pick up your quilts.*** Please bear in mind that many of the chairpeople have been at the church every day since Wednesday setting up and running the show. We need help transporting equipment to trucks/SUVs, driving it back to the Congregational Church storage area and setting the Bayview spaces back up. A special thanks to those of you who have volunteered your trucks. If everyone pitches in, it only takes about 90 minutes.

2024 CVQG QUILT SHOW



Chula Vista Quilters Guild

Invite you to join us for our



2024 Quilt Show and Vendor Mall

FRIDAY, MAY 10, 2024 10:00 am - 4:00 pm
SATURDAY, MAY 11, 2024 10:00 am - 3:00 pm

Bayview Orthodox Presbyterian Church

505 East Naples St, Chula Vista, CA 91911

View over 150 quilts, accessories and other creations by local artists.

Purchase a ticket to win our 2024 Opportunity Quilt, "Bluebird's Welcome"

Proudly announcing the

HOFFMAN CHALLENGE SPECIAL EXHIBIT

VENDOR/CRAFT MALL

SHOP AT OUR WONDERFUL BOUTIQUE OR

PICK UP A BARGIN AT THE SEW & CRAFT BOOTH

Door Prizes every 30 minutes!

\$5 donation kindly requested for admission

For more information visit our website <https://www.chulavistaquiltersguild.com>

or contact: kathryn.cadwell@sbcglobal.net



UPCOMING EVENTS

May 4, 2024	Orange County Quilters Guild 10 a.m. - 3 p.m. Quilts in the Garden Quilt Show 9840 Larson Ave Garden Grove, CA 92844
May 10-11, 2024	Chula Vista Quilters Guild Quilt Show Friday, 10 a.m. - 4 p.m. Saturday, 10 a.m. - 3 p.m. Bayview Orthodox Presbyterian Church 505 East Naples Chula Vista, CA 91911
June 13-15, 2024	Quilt Show Reno Thursday-Friday, 10 a.m. - 5 p.m. Saturday, 10 a.m. - 4 p.m. Grand Sierra Resort & Casino 2500 E Second St Reno, NV 89595
July 11-14, 2024 July 18-21, 2024	Southern CA Quilters Run Thursday-Saturday, 9 a.m. - 6 p.m. Sunday, 10 a.m. - 4 p.m. Various Shops in the Southern CA area www.quiltersrun.com for more information



A Note from Newsletter Editor

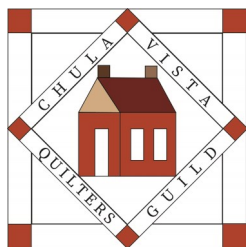
I wanted to let everyone know that I would love to hear any tidbits, stories, quotes, quips, etc. that you would be willing to share. Sometimes I just don't have enough content for the newsletter.

This is your newsletter and I would love to hear your ideas. Please submit them to the guild's email address.

Thank you.



By the Yard Comics



QUILT TALK

Official Publication of the Chula Vista Quilters Guild

Volume 41, Issue 9

MAY 2024

www.chulavistaquiltersguild.com

WEDNESDAY QUILT CLASSES

Bayview Orthodox Presbyterian Church
505 East Naples St,
Chula Vista, 91911

Every Wednesday starting
9 -12 noon

Open enrollment: DONATION WELCOME
Come share what you're working on and learn new
patterns and techniques!

Contact: **Shirley McGuire**

ADVERTISE IN OUR NEWSLETTER

AD WILL APPEAR FOR
11 ISSUES

RATES PER YEAR:

BUSINESS CARD \$40

1/4 PAGE \$60

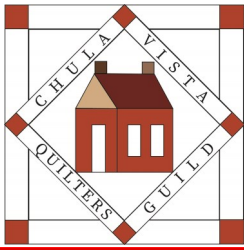
1/2 PAGE \$80

START ADVERTISING
ANYTIME!

Contact Sylvia Jacintho at
chulavistaquiltersguild@gmail.com

Fat Quarter Raffle

Jan=red	May=beachy	Sept=halloween
Feb=greens	June=red,white,blue	Oct=fall colors
Mar=flowers/showers	July=summer	Nov=Christmas
April=stars	Aug=no meeting	Dec=your choice



QUILT TALK

Official Publication of the Chula Vista Quilters Guild

Volume 41, Issue 9

MAY 2024

www.chulavistaquiltersguild.com

Chula Vista Quilters Guild

P.O. Box 1668

Chula Vista, CA 91912

www.chulavistaquiltersguild.com

www.instagram.com/chulavistaquilters/

info@chulavistaquiltersguild.com

Facebook pages:

"Chula Vista Quilters Guild" for public

"Chula Vista Quilters Group" for members

The Guild meets the 2nd Wednesday
of each month
at:

**Community Congregational
Church Meeting Room
276 'F' St.
Chula Vista, CA 91910**

(Enter at the back near the
intersection of Church and Center
Streets)

Social Starts at 6:00 pm

Meeting begins at 6:30 pm

Program begins at 7:00 pm

REMEMBER TO BRING

- ♦ Name Tag
- ♦ **DUES**
- ♦ **Guest/New Member**
- ♦ \$ for Block of the Month
- ♦ \$ for 50/50 drawing
- ♦ Fat Quarter- **Red White & Blue**

**This does not apply in June as we have our
annual potluck!**

UPCOMING BOARD MEETING

TBD

All Members are welcome