

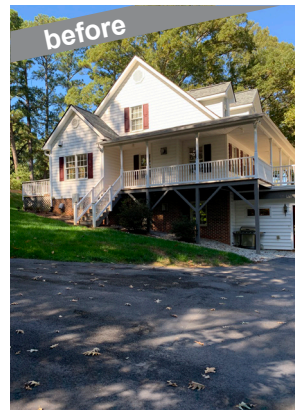


Getting 8+ acres this close to Raleigh was a rare find, and it is getting more rare. The house on this lot was not positioned to take advantage of the views the property offered. It was not a tear down, but very close...

We kept the basement, remodeled it and built our forever home on it with an expanded foundation. We designed a house that we could have the kids and grandkids come to visit, teach the grandkids how to fish, cook and spend time with us as we age in place. It was also designed to entertain our family, friends and neighbors that we like to spend time with. Being in the remodeling business, we knew we had to plan our work, so we could work our plan. So, we took over a year to design every element in the house and select the materials we wanted to go into our home. In hind sight, there are only a couple of changes we would make, and those are very minor. Overall, we are ecstatic with the results and love living in our forever home. This house was designed like we do all of our projects, we customize solutions to best fit the owner's wants and needs while considering how the space is going to be used, now and in the future.

#### **DIRECTIONS**

From I-40 take US70/US401 South, stay on 401 South at the fork. Turn Left on Old Stage Rd. Turn Left on 1010 Rd. Turn Left on Rand Rd. House is on the left between 2 stone columns.



#### **SPECIAL FEATURES**

- Modern Farmhouse Design Elements
- Stone and Wood Beam Accents
- Designed for Entertaining
- Amazing Wine Cellar
- Custom Built-in Cabinetry and Furniture Pieces
- Rooftop Outdoor Kitchen
- Aging in Place Features
- Solar Panel System
- Outstanding Pantry off of Dream Kitchen
- OMG Closet

#### **HIGHLIGHTED VENDORS**

Distinctive Kitchen & Appliance World  
Rainbow Home Interiors  
Talbert Building Supply