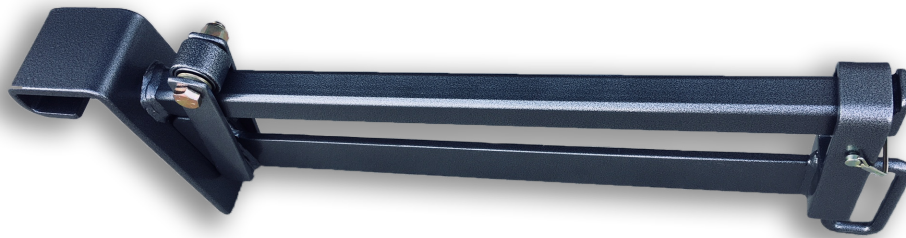


Our new J - Hook style is perfect for quick installation anywhere on the truck frame. It fits on both single and double truck frames and only requires one bolt to secure.

- **SAFER** - No dangerous hooks and requires no bending and twisting to load chains
- **EASY TO USE** - Lift and roll system allows easy access to chains away from the truck
- **MAINTENANCE FREE** - Roller system has two sealed bearings so it will not bind due to corrosion or freeze in the winter
- **STORAGE** - Hangers can be easily removed and stored in the off season to reduce weight on the truck and prolong the life of the hanger



Our patented chain hanger system is much safer and more efficient to use than traditional designs.

Specifications:
Part # MACHJ 100

- Holds two triple chains and two single chains per hanger.
- Requires 4 inch horizontal clearance and minimal vertical clearance (except during installation)
- Recommended weight is 300 lbs per hanger
- 5 year warranty on manufacturer defects
- Safety latch - Can be secured with a padlock
- Weight: 30.6 lbs
- Dimensions: 30" L X 4" W X 10" H

METAL ARC WELDING & FABRICATION LTD.

WWW.METALARCBUILTTOUGH.COM
Ph: 403-872-4959 Email: metalarc33@gmail.com