

Enticing Douro Wine Cruise

7-night cruise from Vila Nova de Gaia (Porto) to Vila Nova de Gaia (Porto)
November 09-16, 2027 | AmaDouro



Porto, Portugal

Date	Destination	Activities
Nov 09	Vila Nova de Gaia (Porto)	EMBARKATION
Nov 10	Régua	Mateus Palace & Gardens visit
Nov 11	Vega de Terrón	Castelo Rodrigo Tour with Tasting of Regional Fare OR Castelo Rodrigo Hike with Tasting of Regional Fare
Nov 12	Vega de Terrón	Salamanca Excursion
Nov 13	Pinhão	Quinta de Avesada lunch Local quinta wine tasting
Nov 14	Régua	Lamego tour and Bôlas tasting OR Holy Staircase hike and Bôlas tasting Lunch at a local quinta
Nov 15	Leverinho	"City of Bridges" Tour & Port Wine Tasting OR Porto Hike & Port Wine Tasting
	Vila Nova de Gaia (Porto)	Guimarães Excursion & Wine Tasting
Nov 16	Vila Nova de Gaia (Porto)	DISEMBARKATION



ONBOARD CRUISE INCLUSIONS:

- » 7-night river cruise in elegantly appointed accommodations
- » Fine dining on board in multiple venues
- » Unlimited hand-selected wine, beer and soft drinks with lunch/dinner
- » Small group guided shore excursions with a variety of choices, including exclusive Special Interest Tours and hiking tours
- » Live local entertainment
- » Unlimited complimentary Wi-Fi access

OPTIONAL LAND PACKAGE INCLUSIONS:

- » Hotel accommodations with daily breakfast and city tour
- » Transfers between hotel and ship



Reserve by July 31, 2026
Save \$1250pp OR Freeland Lisbon + \$500pp

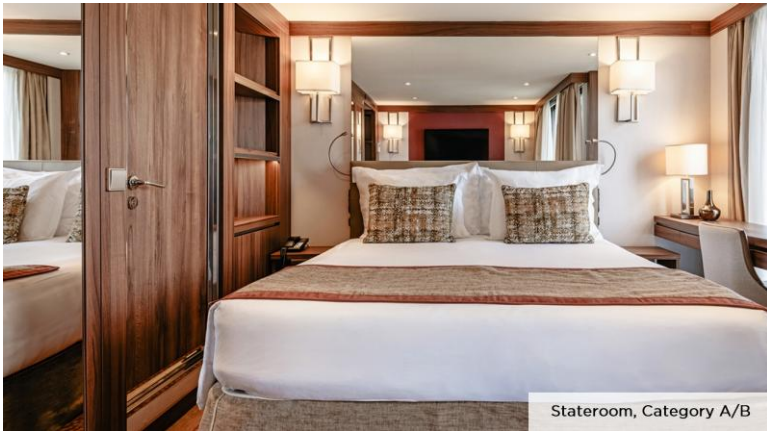
Cruise fares from ~~\$4,879~~ **\$3,629** per person

OPTIONAL LAND PACKAGES per person
3 Nights Lisbon package (Pre-cruise) USD: \$1170 DBL / \$1620 SGL
3 Nights Santiago De Compostela (Post-cruise) USD: \$1260 DBL / \$1950

For more information, please contact:
Thru The Grapevine Travel
Rose Ann Falcone
716-934-2518
roseann@thruthegrapevinetravel.com -
www.thruthegrapevinetravel.com

Enticing Douro Wine Cruise

7-night cruise | November 09-16, 2027 | Aboard AmaDouro



Stateroom, Category A/B

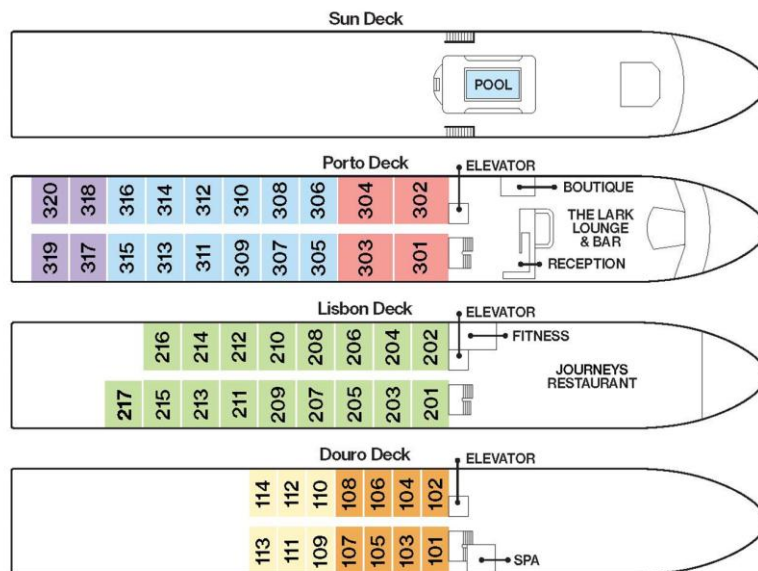


Main Restaurant

ONBOARD FEATURES:

- » Panoramic Lounge with bar, piano and dance floor
- » Fitness room and Sun Deck pool
- » Massage services (additional costs apply)
- » Marble bathrooms, multi-jet showers, soothing bath products, terry bathrobes, slippers and hair dryer
- » Generous closet and storage space with in-room safe
- » Entertainment-On-Demand with high-speed Internet, movies, music and English-language TV
- » Individually controlled air conditioning

Category	Deck / Stateroom / Size
Suite	Porto / Outside Balcony - 323 sq. ft.
A	Porto / Outside Balcony - 215 sq. ft.
B	Lisbon / Outside Balcony - 215 sq. ft.
C	Porto / French Balcony - 161 sq. ft.
D	Douro / Panoramic Window - 161 sq. ft.
E	Douro / Panoramic Window - 161 sq. ft.



TECHNICAL DATA – AMADOURO

Length: 260 ft. **Width:** 37 ft. **Crew:** 38 **Staterooms:** 51 **Passengers:** 102 **Registry:** Portugal

Travel Protection: Please ask your Travel Advisor about your protection options or contact your local provider.

Terms & Conditions: All rates are per person in USD, based on double occupancy, in a Category E stateroom. Rates include port charges of \$280.00. Savings are applicable only to new reservations made by July 31, 2026 and are reflected in the pricing when applicable. Solo travelers in a double occupancy must pay an additional single supplement amount before receiving any eligible discounts. Upgrades, optional land packages, airfares, visas, and gratuities are additional. When applicable, land package rates are inclusive of intra-air flights for Europe. Other restrictions may apply. For complete details, general information and terms & conditions, please contact your Travel Advisor. AmaWaterways reserves the right to revise any errors on the flyer. Itinerary and shore excursions are subject to change at any time without notice. CST#2065452-20.

V26APR03NA

