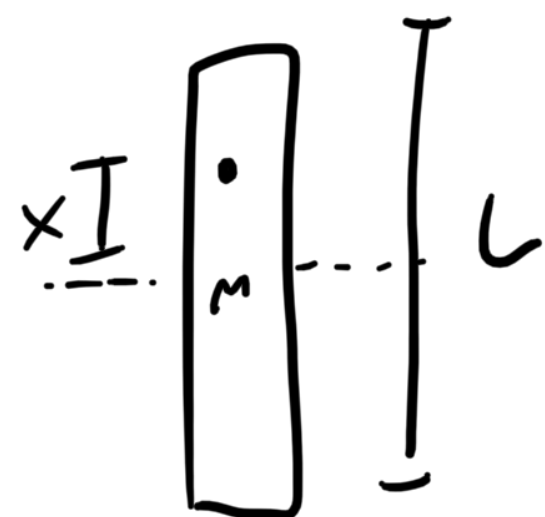


21.



$$T = 2\pi \sqrt{\frac{I}{mgx}}$$

minimize

← HW

$$I = I_c + mx^2 = m\left(\frac{L^2}{12} + x^2\right)$$

$$\frac{T}{mx} = x + \left(\frac{L^2}{12}\right)x^{-1}$$

$$\Rightarrow x = \frac{L}{2\sqrt{3}}$$