

Morgan Falls Office Park

7840 ROSWELL ROAD, SANDY SPRINGS, GA 30350

1 MILE SOUTH OF NORTHRIDGE ROAD & ½ MILE WEST OF GA-400



- \$18.50/RSF Modified Gross Rents - Taxes and Insurance increases over a Base Year
- Operating Expenses are currently estimated at \$2.94/SF
- Easily accessible with attractive, maturely landscaped campus environment
- Located on Roswell Road with access to the office park via the traffic signal at Morgan Falls Road
- Ideal location for medical office use convenient to St. Joseph's, Northside, and multiple other medical facilities
- Quality single-story construction with ample parking just outside the office doors
- Outstanding neighborhood demographics; surrounded by affluent neighborhoods such as Dunwoody and Sandy Springs
- Building signage available
- Adjacent to numerous shopping centers, restaurants, executive auto services, and golf & country clubs

Clayton Gunter
Director of Leasing
(404) 253-6340

Clayton@SimpsonOrg.com

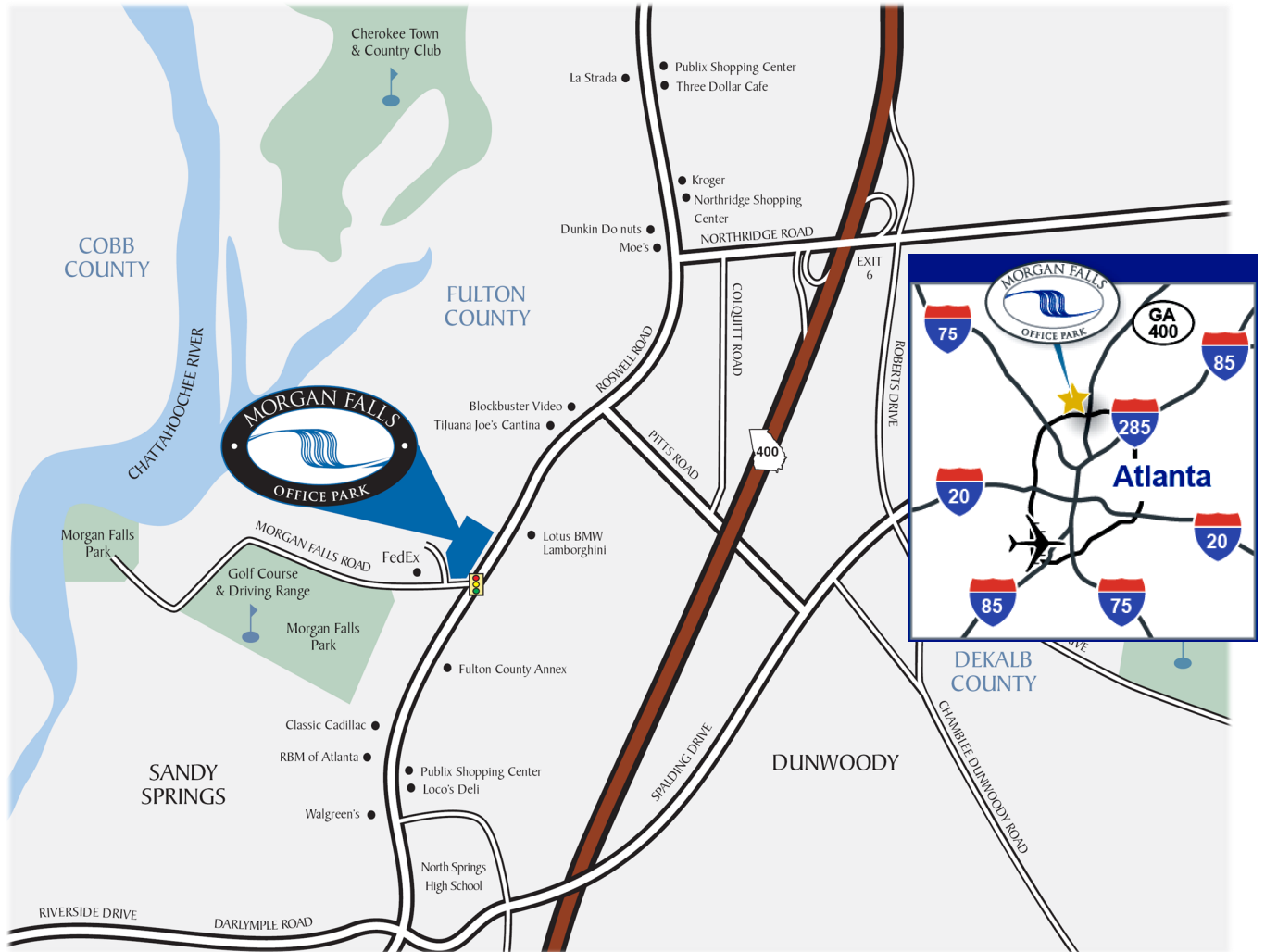
Josh Baine
Vice President, Leasing
(404) 783-1050

Josh@SimpsonOrg.com



7840 ROSWELL ROAD, SANDY SPRINGS, GA 30350

1 MILE SOUTH OF NORTHRIDGE ROAD & ½ MILE WEST OF GA-400



POPULAR *landmark*

Well-known for its running trails, ball fields and proximity to the Chattahoochee River, Morgan Falls has an established reputation in the community as an ideal place for outdoor recreation. While easily identified by its popularity as a natural escape, Morgan Falls offers so much more.

convenient LOCATION

Morgan Falls is quite simply the right place to be. Situated at the meeting point of Roswell, Dunwoody and Sandy Springs, it's easily accessible from some of the city's finest neighborhoods. Not to mention how conveniently close you'll be to the best of Atlanta's major hospitals, shopping centers, restaurants, golf and country clubs.

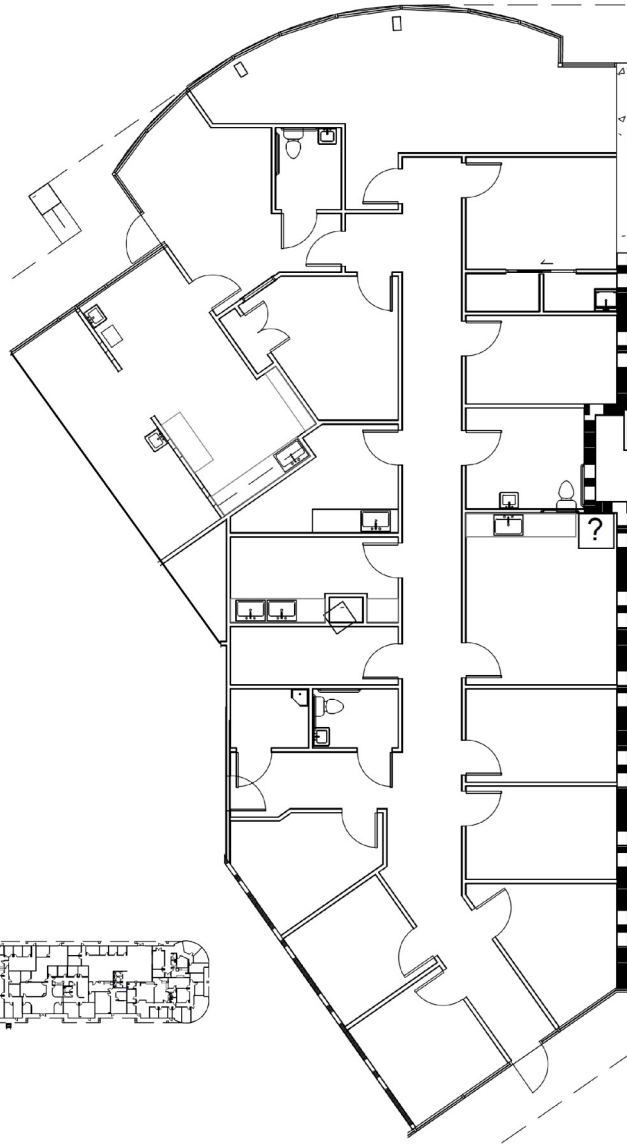
Clayton Gunter
Director of Leasing
(404) 253-6340
Clayton@SimpsonOrg.com

Josh Baine
Vice President, Leasing
(404) 783-1050
Josh@SimpsonOrg.com

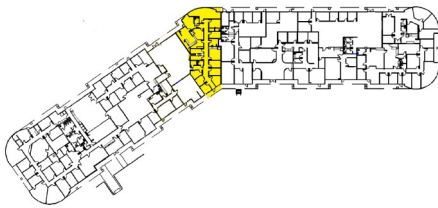


7840 ROSWELL ROAD
SANDY SPRINGS, GA 30350

Suite 310 | Approximately 3,523 SF



Key
Plan



Josh Baine

Vice President, Leasing
(404) 783-1050 mobile

JOSH@SIMPSONORG.COM

Clayton Gunter

Director of Leasing
(404) 543-3990 mobile

CLAYTON@SIMPSONORG.COM

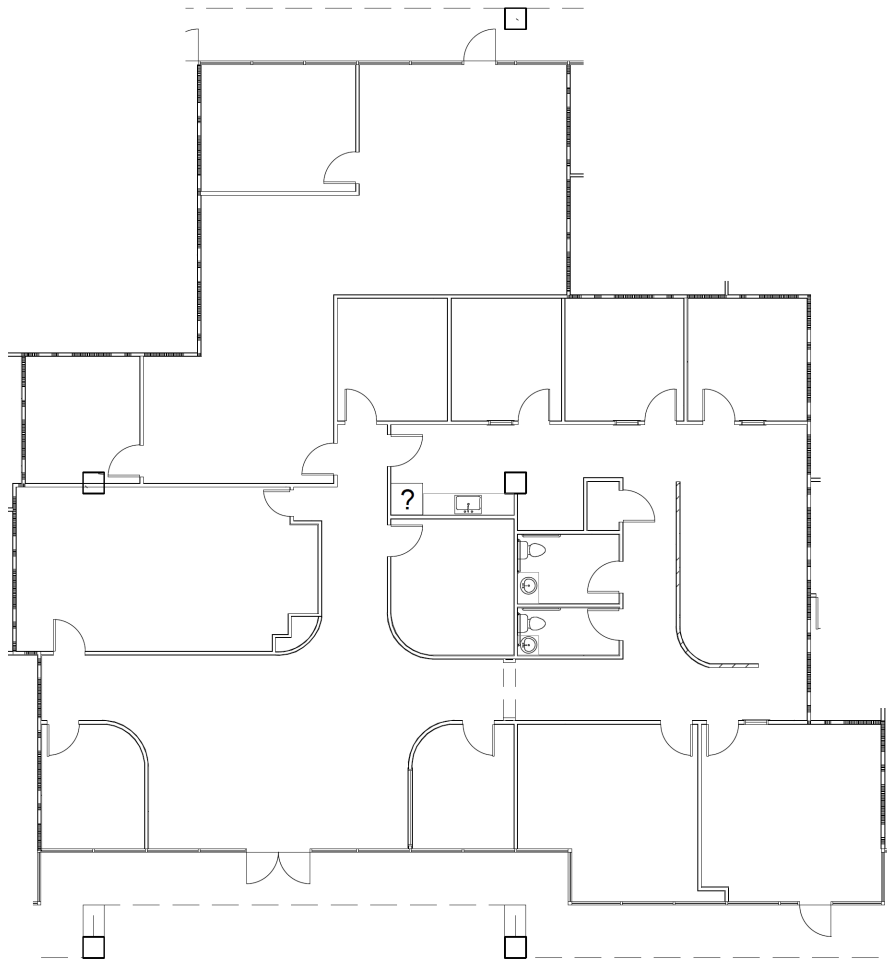


1170 Peachtree St., Ste. 2000 Atlanta, GA 30309
(404) 751-2202 | www.MorganFalls.Info

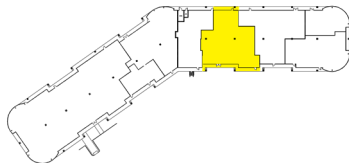


7840 ROSWELL ROAD
SANDY SPRINGS, GA 30350

Suite 320 | 5,525 SF



Key Plan



Josh Baine

Vice President, Leasing
(404) 783-1050 mobile

JOSH@SIMPSONORG.COM

Clayton Gunter

Director of Leasing
(404) 543-3990 mobile

CLAYTON@SIMPSONORG.COM



THE SIMPSON ORGANIZATION

1170 Peachtree St., Ste. 2000 Atlanta, GA 30309
(404) 751-2202 | www.MorganFalls.Info