



1900 Kanawha Boulevard, East, Building 6 • Charleston, WV 25305  
wvde.us

February 2021

Dear Parent(s)/Guardian(s):

The West Virginia Department of Education will resume the administration of the West Virginia General Summative Assessment (WVGSA) for Grades 3-8 in spring 2021. Last spring, states across the country, including West Virginia, suspended the federally mandated statewide assessments because of school closures resulting from the outbreak of the COVID-19 pandemic. Without question, the pandemic has affected student learning and achievement.

Although counties and schools continue to deal with challenges, it is even more critical this year that we obtain data on each of our students to further measure how much impact the pandemic has had on student learning. The WVGSA results will help to identify any achievement gaps that may have occurred so teachers can determine how best to bridge those gaps.

The WVGSA, which measures academic progress for students and schools in West Virginia, is an untimed test administered online. All public school students, including virtual school students, will participate in the WVGSA at the grade level in which they are enrolled, unless they meet the criteria for participation in the West Virginia Alternate Summative Assessment. The test will be administered at your student's school or at an off-site location to be determined by the county.

Students in Grades 3-8 will take the English language arts (ELA) reading, ELA writing, and mathematics sections of the test, with students in Grades 5 and 8 also taking science. Individual student reports will be sent to parents/guardians.

I respectfully request that you encourage your student to perform to his/her best ability during the WVGSA this spring. The Frequently Asked Questions document included with this letter will provide additional details regarding the importance of this year's test administration. A separate informational sheet that provides more details about the WVGSA also is included.

Your student's school will provide you with more information about this year's administration, including when the assessment will be administered. If you have questions or concerns, please contact the principal or counselor at your student's school, or the district test coordinator at your county's board of education office.

Sincerely,

A handwritten signature in black ink, appearing to read "W. Clayton Burch".

W. Clayton Burch  
State Superintendent of Schools

WCB/VR:cc

Enclosures



# Frequently Asked Questions

## *Spring 2021 West Virginia General Summative Assessment (WVGSA)*

---

**Q. Will West Virginia schools administer the WVGSA in spring 2021?**

- A. Yes, West Virginia schools will administer the WVGSA in spring 2021 to meet state and federal annual summative assessment requirements. Students in Grades 3-8 will take the English language arts (ELA) reading, ELA writing, and mathematics sections of the test, with students in Grades 5 and 8 also taking science.

**Q. What are the benefits for students to take the WVGSA in spring 2021?**

- A. The WVGSA provides important information that can be used to help improve teaching and learning for each individual student. Results from the assessment can help teachers and school administrators pinpoint areas of weakness and identify possible achievement gaps to help teachers adjust instruction for each student. It is always important that we obtain a valid measure of your student's academic achievement, but it is even more critical this year we collect assessment data to determine what, if any, impact the COVID-19 pandemic has had on your student's learning.

**Q. Do virtual school students have to take the test?**

- A. Yes, virtual school students are considered public school students and are required to take the annual statewide summative tests at the grade level they are enrolled. The district will provide additional information regarding testing dates and times.

**Q. Are virtual school students required to take the test at the school?**

- A. All students must take the tests in-person at the schools where they are enrolled or at off-site locations established by the county for testing. Counties and schools will determine a schedule and notify you of when and where your student is to report for testing. Counties and schools have several options for testing that will enable them to follow required mitigation protocols to ensure all students can take their tests safely. Talk to your student's school to determine the best solution for ensuring your student can take the test.

**Q. Can students take the test remotely?**

- A. No, remote testing is not allowed. All tests are administered in an in-person setting.

**Q. Can students opt out of taking the state's summative assessment in spring 2021?**

- A. Neither West Virginia law nor the regulations of the West Virginia Board of Education contain any provisions for "opting-out" of statewide assessments, and we are aware of no legal right for parents or students to do so.

**Q. Will students' WVGSA scores affect their grades, promotion, or graduation?**

- A. No, results from the WVGSA will not affect students' grades or keep students from advancing to the next grade or graduating high school.

*For additional information regarding the spring 2021 statewide assessments, please contact your student's school.*

# West Virginia General Summative Assessment

## Grades 3-8

### *An Informational Guide for Parents/Guardians*



This informational guide provides additional information regarding the West Virginia General Summative Assessment, including a breakdown of each content area test. The mathematics and English Language Arts (ELA) tests are computer adaptive, which means the tests adapt to each individual student based on whether the student answers the questions correctly. The science test is a matrix design, which means each student will see items covering a portion of the grade-band standards. To review items similar to those students may see on the assessment, we encourage you take a practice test by visiting <https://wv.portal.airast.org/training-tests.shtml>.

#### **Mathematics Test**

##### **Grades 3-8 Participate**

- The test administered at each grade covers that grade's mathematics content.

##### **Item Types**

- Multiple-Choice Questions
- Computer-Enabled Questions

##### **Grade level assessment concepts are shown below:**

###### **Grades 3-5**

###### **Concepts/Procedures**

- Numbers and Operations in Base Ten and Fractions
- Operations and Algebraic Thinking
- Measurement, Data, and Geometry

###### **Modeling and Problem Solving**

###### **Use Mathematical Reasoning**

###### **Grade 6**

###### **Concepts/Procedures**

- Ratios and Proportional Relationships and Number Systems
- Expressions and Equations
- Geometry & Statistics and Probability

###### **Modeling and Problem Solving**

###### **Use Mathematical Reasoning**

###### **Grade 7**

###### **Concepts/Procedures**

- Ratios and Proportional Relationships and Number Systems
- Expressions and Equations
- Geometry
- Statistics and Probability

###### **Modeling and Problem Solving**

###### **Use Mathematical Reasoning**

###### **Grade 8**

###### **Concepts/Procedures**

- Expressions and Equations and Number Systems
- Functions
- Geometry & Statistics and Probability

###### **Modeling and Problem Solving**

###### **Use Mathematical Reasoning**

#### **ELA Test**

##### **Grades 3-8 Participate**

- The test administered at each grade covers that grade's ELA content.

##### **Item Types**

- Multiple-Choice Questions
- Computer-Enabled Questions

##### **Two Components**

- ELA Reading
- ELA Writing – Students will read sources and write an essay in response to a given prompt.

*Students must complete both the reading and the writing sections to obtain an overall ELA Score.*

##### **Grade level assessment concepts are shown below:**

###### **Grades 3-8**

- Reading Literature
- Reading Informational
- Writing

#### **Science Test**

##### **Grades 5 & 8 Participate**

- The test administered in Grade 5 covers science content taught in Grades 3, 4, and 5.
- The test administered in Grade 8 covers science content taught in Grades 6, 7, and 8.

##### **Item types**

- Multiple-Choice Questions
- Computer-Enabled Questions
- Embedded Field Test Questions

##### **Grade Band assessment concepts are shown below:**

###### **Grades 5 & 8**

- Life Science
- Physical Science
- Earth and Space Science



1900 Kanawha Boulevard, East, Building 6 • Charleston, WV 25305  
wvde.us

February 2021

Dear Parent(s)/Guardian(s):

The West Virginia Department of Education will resume the administration of the West Virginia Alternate Summative Assessment (WVASA) in Grades 3-8 and 11 in spring 2021. The WVASA supports student learning and measures what a student with the most significant cognitive disabilities knows and can do. Last spring, states across the country, including West Virginia, suspended the federally mandated statewide assessments because of school closures resulting from the outbreak of the COVID-19 pandemic. Without question, the pandemic has affected student learning and achievement.

Although counties and schools continue to deal with challenges, it is even more critical this year that we administer the WVASA to obtain data on each of our students to further measure how much impact the pandemic has had on their learning. The results will help identify any achievement gaps that may have occurred, so teachers can determine how best to bridge those gaps.

The WVASA is an untimed test administered online. All public-school students, including virtual school students, who meet the participation criteria for alternate assessment outlined in *The Guidelines for Participation in West Virginia State Assessments* will participate in the alternate summative assessment at the grade level in which they are enrolled. Students are assessed in Grades 3-8 and Grade 11 for English language arts and mathematics, and Grades 5, 8, and 11 for science. The test will be administered at your student's school or at an off-site location to be determined by the county. Individual student reports will be sent to parents/guardians.

I respectfully request that you encourage your student to perform to his/her best ability during the WVASA this spring. The Frequently Asked Question document included with this letter will provide additional details regarding the importance of this year's test administration. A separate informational sheet that describes the alternate summative assessment and the use of test results to measure students' levels of performance on the West Virginia Alternate Academic Achievement Standards and Objectives also is included. The informational sheet is designed to be a compact, useful guide for understanding the components of alternate assessment.

Your student's school will provide you with more information about this year's administration, including when the assessment will be administered. If you have questions or concerns, please contact the principal or counselor at your student's school, or the district test coordinator at your county's board of education office.

Sincerely,

A handwritten signature in black ink, appearing to read "W. Clayton Burch".

W. Clayton Burch  
State Superintendent of Schools

WCB/VR:cc

Enclosures



# Frequently Asked Questions

## *Spring 2021 West Virginia Alternate Summative Assessment (WVASA)*

---

**Q. Will West Virginia schools administer the WVASA in spring 2021?**

- A. Yes, West Virginia schools will administer the WVASA, also known as the Dynamic Learning Maps (DLM) Assessment, in spring 2021 to meet state and federal annual summative assessment requirements. Students with the most significant cognitive disabilities in Grades 3-8 and Grade 11 will take the English language arts (ELA) and mathematics sections of the test, with students in Grades 5, 8 and 11 also taking science.

**Q. What are the benefits for students to take the WVASA in spring 2021?**

- A. The WVASA provides important information that can be used to help improve teaching and learning for each individual student. Results from the assessment can help teachers and school administrators pinpoint areas of weakness and identify possible achievement gaps to help teachers adjust instruction for each student. It is always important that we obtain a valid measure of your student's academic achievement, but it is even more critical this year we collect assessment data to determine what, if any, impact the COVID-19 pandemic has had on your student's learning.

**Q. Do virtual school students have to take the test?**

- A. Yes, virtual school students are considered public school students and are required to take the annual statewide summative tests at the grade level they are enrolled. The district will provide additional information regarding testing dates and times.

**Q. Are virtual school students required to take the test at the school?**

- A. All students must take the tests in-person at the schools where they are enrolled or at off-site locations established by the county for testing. Counties and schools will determine a schedule and notify you of when and where your student is to report for testing. Counties and schools have several options for testing that will enable them to follow required mitigation protocols to ensure all students can take their tests safely. Talk to your student's school to determine the best solution for ensuring your student can take the test.

**Q. Can students take the test remotely?**

- A. No, remote testing is not allowed. All tests are administered in an in-person setting.

**Q. Can students opt out of taking the state's summative assessment in spring 2021?**

- A. Neither West Virginia law nor the regulations of the West Virginia Board of Education contain any provisions for "opting-out" of statewide assessments, and we are aware of no legal right for parents or students to do so.

**Q. Will students' WVASA scores affect their grades, promotion, or graduation?**

- A. No, results from the WVASA will not affect students' grades or keep students from advancing to the next grade or graduating high school.

*For additional information regarding the spring 2021 statewide assessments, please contact your student's school.*

# West Virginia Alternate Summative Assessment An Informational Guide for Parents/Guardians



West Virginia DEPARTMENT OF  
**EDUCATION**

This informational guide provides additional information regarding the West Virginia Alternate Summative Assessment (WVASA), which is specifically designed for students with the most significant cognitive disabilities whose performance cannot be adequately assessed through the West Virginia General Summative Assessment even with accommodations.

## Important Information

Students who are administered the alternate assessment will be instructed using the appropriate grade level West Virginia Alternate Academic Achievement Standards, West Virginia Board of Education Policy 2520.16 (WVAAAS). Students who participate in the West Virginia Alternate Summative Assessment while receiving instruction through the WVAAAS and earning course credits will earn an alternate diploma. It is important to note that students will still have access to grade level content standards and the opportunity to pursue a general diploma until the age of 21.

The alternate assessment documents a student's efforts, achievement, and progress on instructional activities aligned to specific WVAAAS and includes descriptions of what students should know and be able to do at each grade level in a specific content area.

The alternate assessment is administered individually to students and measures performance in three content areas:

### English Language Arts (ELA)

- Grades 3-8 and 11

### Mathematics

- Grades 3-8 and 11

### Science

- Grades 5, 8 and 11

## Frequent Questions

### How does participating in statewide assessments benefit my student?

Assessments provide important information about progress and achievement. Assessment results help the Individualized Education Plan (IEP) team plan the best instruction to meet your student's specific educational needs.

### Who determines how my student will be assessed?

Your student's IEP team makes decisions about assessment. You and the other IEP team members follow state guidelines to decide how your student participates in statewide assessments.

### Will I receive my student's assessment results?

Yes, you will receive an individual student report that shows your student's achievement level in each content area.

## Dynamic Learning Maps™

West Virginia is a member of the Dynamic Learning Maps (DLM) Consortium. The assessments are online and are linked to the WVAAAS.

All students participate in state accountability assessments. The Dynamic Learning Maps™ Alternate Assessment System (DLM™) is an instructionally relevant system that supports student learning and measures what students with significant cognitive disabilities know and can do.

Your student does not need to prepare in any way for the assessment. Assessments are delivered in testlets with each testlet containing 3 to 8 questions. Students receive between 5 and 7 testlets, depending on the grade and subject. The assessment is administered in a one-on-one setting. The assessment is designed to meet the individualized needs of each student.

All times noted are estimates or ranges. Total testing time varies depending on a student's unique learning needs. Testlets may be taken separately across multiple testing sessions as long as they are all completed within the testing window.

### Total Testing Time

- 70-90 minutes in ELA
- 35-60 minutes in mathematics
- 30-60 minutes in science

All results are completely confidential, and you will be provided a performance report. If you would like more information about DLM, please visit:

<http://dynamiclearningmaps.org/westvirginia>

*For more information, please contact your student's school or your district board office.*



1900 Kanawha Boulevard, East, Building 6 • Charleston, WV 25305  
wvde.us

February 2021

Dear Parent(s)/Guardian(s):

The West Virginia Department of Education will resume the administration of the SAT School Day in spring 2021. Last spring, states across the country, including West Virginia, suspended the federally mandated statewide assessments because of school closures resulting from the outbreak of the COVID-19 pandemic. Without question, the pandemic has affected student learning and achievement.

Although counties and schools continue to deal with challenges, it is even more critical this year that we administer the SAT School Day to obtain data on each of our students to further measure how much impact the pandemic has had on student learning. It also is important to provide students with an opportunity to take a free college entrance exam and obtain vital information on their readiness for college and career.

Because the SAT School Day is now West Virginia's high school accountability exam, all Grade 11 students except those who take the West Virginia Alternate Summative Assessment are required to take this state-administered test. This year, Grade 12 students who were unable to take the state-provided SAT in fall 2020 also may – but are not required to – take the spring SAT School Day.


The SAT School Day will be administered in a paper format at your student's high school or a county-approved off-site location during a regular school day. Students will NOT pay a fee to take this test. The primary test date for this year's SAT School Day is Tuesday, April 13, 2021, with a makeup date set for Tuesday, April 27, 2021. Students with accommodations may be tested during the accommodation test window between April 13, 2021, and April 26, 2020. A makeup accommodated test window is set for April 27-29, 2021.

The SAT is a nationally recognized college- and career-readiness assessment administered by the College Board. It is accepted at colleges and universities throughout West Virginia and the nation for both college admissions and placement and can be used to qualify for the PROMISE Scholarship.

The Frequently Asked Question document included with this letter will provide additional details regarding the importance of this year's test administration. Also enclosed with this letter is important information from the College Board regarding the SAT School Day. Each school will share additional information regarding their plans for testing.

I respectfully request that you encourage your student to perform to his/her best ability during the SAT School Day this spring. If you have questions or concerns, please contact the principal or counselor at your student's school, or the district test coordinator at your county's board of education office.

Sincerely,

  
W. Clayton Burch  
State Superintendent of Schools

WCB/VR:cc

Enclosures



# Frequently Asked Questions

## *Spring 2021 West Virginia SAT School Day*

---

**Q. Will West Virginia schools administer the state-provided SAT School Day in spring 2021?**

- A. Yes, West Virginia schools will administer the SAT School Day in spring 2021 to meet annual state and federal summative assessment requirements. Students will receive scores in English language arts (ELA), math and science, along with writing scores on the SAT Essay.

**Q. What are the benefits for students to take the SAT School Day in spring 2021?**

- A. The SAT School Day provides important information that can be used to help improve teaching and learning for each individual student. Results from the assessment can help teachers and school administrators pinpoint areas of weakness and identify possible achievement gaps to help teachers adjust instruction for each student. It is always important that we obtain a valid measure of your student's academic achievement, but it is even more critical this year we collect assessment data to determine what, if any, impact the COVID-19 pandemic has had on your student's learning. Students who take the SAT School Day have the additional benefit of taking a college entrance exam that can be used for college admissions, placement in college credit-bearing courses, and qualification for various scholarships, including West Virginia's PROMISE Scholarship.

**Q. Do virtual school students have to take the test?**

- A. Yes, virtual school students are considered public school students and are required to take the annual statewide summative tests at the grade level they are enrolled. The district will provide additional information regarding testing dates and times.

**Q. Are virtual school students required to take the test at the school?**

- A. All students must take the tests in-person at the schools where they are enrolled or at off-site locations established by the county for testing. Counties and schools will determine a schedule and notify you of when and where your student is to report for testing. Counties and schools have several options for testing that will enable them to follow required mitigation protocols to ensure all students can take their tests safely. Talk to your student's school to determine the best solution for ensuring your student can take the test.

**Q. Can students take the test remotely?**

- A. No, remote testing is not allowed. All tests are administered in an in-person setting.

**Q. Can students opt out of taking the state's summative assessment in spring 2021?**

- A. Neither West Virginia law nor the regulations of the West Virginia Board of Education contain any provisions for "opting-out" of statewide assessments, and we are aware of no legal right for parents or students to do so.

**Q. Will students' SAT School Day scores affect their grades, promotion, or graduation?**

- A. No, results from the SAT School Day will not affect students' grades or keep students from advancing to the next grade or graduating high school.

*For additional information regarding the spring 2021 statewide assessments, please contact your student's school.*





# Get to Know the SAT<sup>®</sup>

A GUIDE FOR STUDENTS



West Virginia is using the SAT as the state's accountability exam in spring 2021. You will take it for free when you are in the 11th grade.

Why is that good news? The SAT is a globally recognized college entrance exam that can open doors to higher education.

## APRIL 2021 WEST VIRGINIA SAT SCHOOL DAY TESTING DATES

**April 13:** Primary Test Date

**April 13-26:** Accommodations  
Testing Window

**April 27:** Makeup Test Date

## TOTAL TESTING TIME

4 hours, 52 minutes

## SAT HIGHLIGHTS



**NO GUESSING  
PENALTY**

You earn points for the questions you answer correctly, encouraging you to give your best answers.



**EVERYDAY  
WORDS**

The vocabulary is closer to what you can expect to see in college classes.



**ESSENTIAL  
MATH**

The SAT tests the math that promotes success in whatever major or career you choose.

## SAT Score Structure

**1 Total Score**  
400–1600 Scale

**Total Score**

**2 Section Scores**  
200–800 Scale

**Evidence-Based Reading and Writing**

**Math**

**3 Test Scores**  
10–40 Scale

**Reading**

**Writing and Language**

**Math**

**2 Cross-Test Scores**  
10–40 Scale

**Analysis in History/Social Studies**

**Analysis in Science**

**3 Essay Scores**  
2–8 Scale

**Reading**

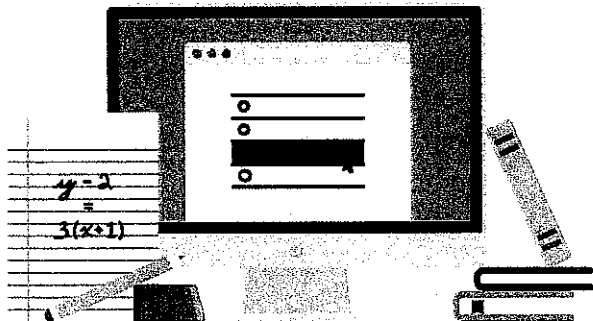
**Analysis**

**Writing**

Scores are accepted by all colleges and universities across the country.

## Get Ready for the SAT with Free SAT Practice Tools

The SAT has practice resources to help you sharpen your skills and get ready for test day.



### FREE, PERSONALIZED PRACTICE ON KHAN ACADEMY®

Official SAT practice on Khan Academy is the best way to get ready for the SAT. You can link your College Board and Khan Academy accounts to get a personalized plan based on your test results from the PSAT/NMSQT®, SAT, and more. You will have access to:

- Seven full-length practice tests, plus study and test-taking tips.
- Thousands of interactive problems with instant feedback.
- Video lessons that explain problems step by step.

Sign up at [satpractice.org](https://satpractice.org).

## Resources

### CREATE A COLLEGE BOARD ACCOUNT

Sign up for an account to:

- View scores from the PSAT/NMSQT, SAT, and AP® Exams.
- Sign up for helpful reminder emails.
- Search for colleges and build a college list.

[collegeboard.org/register](https://collegeboard.org/register)

### BIGFUTURE™

Choosing a college is a big and exciting decision. Explore your interests and take the time to find a college that will put you on a path to a bright future.

[collegeboard.org/bigfuture](https://collegeboard.org/bigfuture)

### STUDENT SEARCH SERVICE®

This free service has helped millions of students receive valuable information from colleges and nonprofit scholarship organizations.

[sat.org/student-search](https://sat.org/student-search)

Learn about the SAT at  
[collegeboard.org/sat](https://collegeboard.org/sat).



For tips and updates about the SAT, follow us  
[@OfficialSAT](https://twitter.com/OfficialSAT).

**PARENT/GUARDIAN OR STUDENT 18 YEARS OR OLDER CONSENT FORM FOR  
PROVIDING OPTIONAL STUDENT INFORMATION TO THE COLLEGE BOARD  
WHEN TAKING THE SAT® School Day Test**

**STUDENT:** \_\_\_\_\_  
Print Name

**PARENT/GUARDIAN [IF STUDENT IS UNDER 18 YEARS OF AGE]:**  
\_\_\_\_\_  
Print Name

All West Virginia high school juniors, except those taking the alternate assessment, will be taking the SAT® School Day Test, provided by the College Board as a statewide high school assessment. By using an established college entrance exam to test students' knowledge of West Virginia College- and Career- Readiness standards, the West Virginia Department of Education is reducing the number of tests being administered for those students who intend to apply or might apply for college.

Prior to test day, all students will fill out the first section of the answer sheet during a class session with the assistance of a test supervisor. The section contains some questions that must be answered and others that are optional.

Students are required to provide the following information on the SAT answer sheet prior to taking the test:

- first and last name (question #1);
- testing location (#2)
- school (#3);
- school code (#4);
- student identifier number (WVEIS number) (#5)
- grade level (#6);
- date of birth (#7) and;
- gender (#8).

Students also will be asked to complete their optional four free score sends. This allows College Board to send a student's scores to the colleges or scholarship programs identified by the student. If left blank, no scores will be sent.

The other questions are optional and voluntary. You, as a parent or guardian of a student under the age of 18, must give written consent **on this form by circling YES** for six individual questions, and you may give blanket consent to the 20 remaining questions **by circling YES** if you want your student to answer them.

Students 18 years or older must give their own written consent **on this form** to answer the optional questions. They do not need parental consent to answer the optional questions, but they may wish to review this form with a parent or other adult for guidance.

Below is a table on which each row lists an optional question (for a total of six questions) the question number, the reason why the College Board requests the information and an area to circle YES if consent is given for each question. You may consult the *SAT School Day Student Guide*, which accompanies this consent form, to learn more about the SAT and the College Board

<b>Question No.</b>	<b>Question</b>	<b>How College Board will use information</b>	<b>Consent (circle YES to show consent)</b>
9 – 12	Home/Mailing Address	Assists the College Board in matching answer sheet to student's record; if opting in Student Search Service, (#15), address will be shared with interested colleges.	<b>YES</b>
15	Student Search Service	The College Board maintains a name list service connecting SAT test takers with higher education institutions that fit their academic capabilities and helps institutions meet their enrollment goals.	<b>YES</b>
25	Expected high school graduation date	Helps colleges create a picture of academic preparation, extra- and co-curricular involvement and post-high school plans of graduating class.	<b>YES</b>

Questions 18-24 and 26-38 ask generalized questions about a student's academic background, extra- and co-curricular involvement and post-high school plans. These questions are summarized in the table below, with an explanation of how the College Board will use the information provided.

You may give your consent to all these questions by **circling YES** here:

**I GIVE MY CONSENT TO THE STUDENT ANSWERING QUESTIONS 18-24 AND 26-38: YES**

---

SIGNATURE OF PARENT

Date

---

SIGNATURE OF STUDENT 18 YEARS OF AGE OR OLDER

Date

**Return pages 1-2 of this form to:**

Question No.	Question	How College Board will use the information
18	What language did student learn to speak first? What language does he know best	Helps the student connect with colleges and scholarship opportunities; provides information that will be provided to colleges and scholarship providers to identify students who may be interested in the opportunities they offer; provides information used for internal research and planning at the College Board
19	Racial/Ethnic Group	Same use as in #18
20	Level of education of each parent/ guardian	Same use as in #18
21	Parent/guardian military status	Same use as in #18
22	Listing high school activities	Same use as in #18
23	Self-rating compared to others in math, science and writing	Same use as in #18 [except the answers won't be included on score reports sent to colleges]
24	Estimate of average grade earned in each course category listed	Same use as in #18 [except the answers won't be included on score reports sent to colleges]
26	List courses taken or planning to take by year	Same use as in #18
27	College setting preferences	Same use as in #18
28	College size preferences	Same use as in #18
29	College type preferences	Same use as in #18
30	College housing preferences	Same use as in #18
31	List college activities of interest	Same use as in #18
32	Possible college majors	Same use as in #18
33	Highest level of education planning to complete	Same use as in #18
34	Plan to apply for AP credit, credit by exam or exemption in listed subjects	Same use as in #18
35	Sports participation	Same use as in #18
36	Planning to hold part-time job	Same use as in #18
37	Planning to apply for financial aid	Same use as in #18
38	Arts and music courses taken or planning to take	Same use as in #18

***Notification of Student Report Release to State Superintendent  
(by District Superintendent/Designee)***

Please email this form no later than **September 27, 2019**, to the following individual:

Carrie Christy  
[cchristy@k12.wv.us](mailto:cchristy@k12.wv.us)  
West Virginia Department of Education  
Office of Assessment  
Phone: (304) 558-2546  
Fax: (304) 558-1613

This provides verification that **all principals/designees** in my county have made the confidential release of individual student reports for the West Virginia General Summative Assessment (WVGSA) in Grades 3-8, the West Virginia Alternate Summative Assessment (WVASA) in Grades 3-8 and 11, and the SAT School Day in Grade 11 to parent(s)/guardian(s) before **September 20, 2019**, as per Policy 2340 and FERPA regulations that require the timely release of student reports.

Superintendent/Designee: Alicia Lambert  
County: Tucker  
Phone Number: (304) 478-2771  
E-Mail: arlambert@k12.wv.us

Alicia Lambert  
Signature of Superintendent/Designee



1900 Kanawha Boulevard, East, Building 6 • Charleston, WV 25305  
wvde.us

## MEMORANDUM

**TO:** District Superintendents

**FROM:** Steven L. Paine, Ed.D. *SLP*  
State Superintendent of Schools

**SUBJECT:** Release of Student Reports to Parent(s)/Guardian(s)

**DATE:** August 1, 2019

Federal Title I monitoring requires the West Virginia Department of Education (WVDE) to institute a procedure to ensure student assessment reports are sent to parent(s)/guardian(s) in a timely manner. The student reports shall be sent in a secure manner to parent(s)/guardian(s) by the school staff within the specified timelines as per the attached forms. All individual student reports should be sent to parent(s)/guardian(s) no later than **September 20, 2019**.

As the district superintendent, please request the school principal/designee to complete the attached form, *Release of Student Report to Parents/Guardians by Principal/Designee*, to confirm to you that the individual student reports for the statewide assessments indicated on the forms were sent to the parent(s)/guardian(s) of the child(ren) by the date indicated above. Please require your principals to sign the forms and return them to you or your county designee by **September 20, 2019**.

As per this regulation, you or your designee will then confirm to the state superintendent via the attached form, *Notification of Student Report Release to State Superintendent (by district superintendent/designee)* that the individual student reports were sent to the parents/guardians by each of the public school principals in the county. Please sign and email a copy of the *Notification of Student Report Release to State Superintendent (by District Superintendent/Designee)* to the Office of Assessment to Carrie Christy ([cchristy@k12.wv.us](mailto:cchristy@k12.wv.us)) by **September 27, 2019**.

All school and county confirmations should be retained at the school and county to meet Federal Title I monitoring requirements.

Parents often have questions about the student reports; therefore, I respectfully request that principals/designees provide training to staff on the explanation and interpretation of the student reports and make time available to share reports with parent(s)/guardian(s).

Do not hesitate to call Dr. Vaughn G. Rhudy, executive director, Office of Assessment, at 304-558-2546, if you have questions regarding this procedure.

SLP/VR:cc

cc: District Test Coordinators

Attachments

**Release of Student Report to Parents/Guardians  
by Principal/Designee**

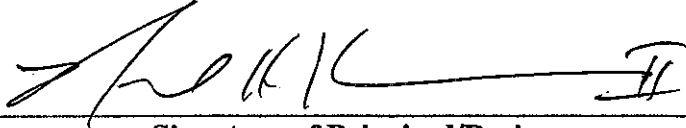
*West Virginia General Summative Assessment Grades 3-8  
West Virginia Alternate Summative Assessment Grades 3-8*

Please email the form no later than **September 20, 2019**, to your District Superintendent.

Principal/Designee: Neil Kisamore  
 School: Davis Thomas Elementary Middle  
 County: Tucker  
 Phone Number: 304-463-4422  
 E-Mail: nkisamore@kia.wv.us

This provides verification that the individual student reports for the *West Virginia General Summative Assessment (WVGSA)* and the *West Virginia Alternate Summative Assessment (WVASA)* in Grades 3-8 have been confidentially released to parent(s)/guardian(s) **before September 20, 2019**, as per Policy 2340 requirements and FERPA regulations that require the timely release of student reports. The ✓ indicates verification of the released student reports for the identified assessments and grade levels.

Grade Level(s)	WVGSA 3-8 ✓	WVASA (DLM) ✓
3	✓	
4	✓	
5 (includes science)	✓	
6	✓	
7	✓	
8 (includes science)		

  
 \_\_\_\_\_  
 Signature of Principal/Designee



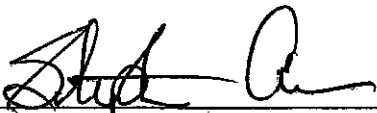
**Release of Student Report to Parents/Guardians  
by Principal/Designee  
SAT School Day Grade 11  
West Virginia Alternate Summative Assessment Grade 11**

Please email the form no later than **September 20, 2019**, to your District Superintendent.

Principal/Designee: Stephen Cosner  
 School: Tucker Co. High School  
 County: Tucker  
 Phone Number: 304-478-2651  
 E-Mail: stephen.cosner@kia.wv.us

This provides verification that the individual student reports for the *SAT School Day* and the *West Virginia Alternate Summative Assessment (WVASA)* in Grade 11 have been confidentially released to parent(s)/guardian(s) **before September 20, 2019**, as per Policy 2340 requirements and FERPA regulations that require the timely release of student reports. The √ indicates verification of the released student reports for the identified assessments and grade level.

Grade Level(s)	SAT School Day √	WVASA (DLM) √
11 (includes science)	✓	

  
 \_\_\_\_\_  
 Signature of Principal/Designee

**Release of Student Report to Parents/Guardians  
by Principal/Designee**

*West Virginia General Summative Assessment Grades 3-8  
West Virginia Alternate Summative Assessment Grades 3-8*

Please email the form no later than **September 20, 2019**, to your District Superintendent.

Principal/Designee: Stephen Cosner  
 School: Tucker County High  
 County: Tucker  
 Phone Number: 304-478-2651  
 E-Mail: Stephen.Cosner@K12.WV.US

This provides verification that the individual student reports for the *West Virginia General Summative Assessment (WVGSA)* and the *West Virginia Alternate Summative Assessment (WVASA)* in Grades 3-8 have been confidentially released to parent(s)/guardian(s) **before September 20, 2019**, as per Policy 2340 requirements and FERPA regulations that require the timely release of student reports. The ✓ indicates verification of the released student reports for the identified assessments and grade levels.

Grade Level(s)	WVGSA 3-8 ✓	WVASA (DLM) ✓
3		
4		
5 (includes science)		
6		
7		
8 (includes science)	✓	✓

  
 \_\_\_\_\_  
 Signature of Principal/Designee

**Release of Student Report to Parents/Guardians  
by Principal/Designee**

*West Virginia General Summative Assessment Grades 3-8  
West Virginia Alternate Summative Assessment Grades 3-8*

Please email the form no later than **September 20, 2019**, to your District Superintendent.

Principal/Designee: Kelly Thompson  
 School: Tucker Valley Elementary Middle  
 County: Tucker  
 Phone Number: 304-478-3606  
 E-Mail: Kljthomp@kia.wv.us

This provides verification that the individual student reports for the *West Virginia General Summative Assessment (WVGSA)* and the *West Virginia Alternate Summative Assessment (WVASA)* in Grades 3-8 have been confidentially released to parent(s)/guardian(s) **before September 20, 2019**, as per Policy 2340 requirements and FERPA regulations that require the timely release of student reports. The  $\checkmark$  indicates verification of the released student reports for the identified assessments and grade levels.

Grade Level(s)	WVGSA 3-8 $\checkmark$	WVASA (DLM) $\checkmark$
3	$\checkmark$	$\checkmark$
4	$\checkmark$	$\checkmark$
5 (includes science)	$\checkmark$	$\checkmark$
6	$\checkmark$	$\checkmark$
7	$\checkmark$	$\checkmark$
8 (includes science)		

Kelly Thompson  
**Signature of Principal/Designee**