

 **JJ ORTHODONTICS**

*For Everlasting Smile*



[www.jjortho.com](http://www.jjortho.com) | [sales@jjortho.com](mailto:sales@jjortho.com)

# Why You Love Doing Business with JJ Orthodontics...

## 1. Three easy ways to order

Phone : 1-800-425-8545

0480-2746353/ 2746888

E-mail : sales@jjortho.com

Address : JJ Orthodontics Pvt. Ltd., IX100 (Old VII/202E), Munipara, Kanjirapilly P.O., Pariyaram village, Chalakudy, Thrissur Dist. Kerala-680721.

## 2. Ordering is fast

Call 1-800-4 25-8545 and your call will be answered by a highly trained professional

## 3. Same day shipping

We ship an incredible 98% of our orders on the same day.

## 4. 100% Money – Back Guarantee

If for any reason you are not completely satisfied with anything you buy from us, return it within 30 days for full refund or replacement.

## 5. Free life time tech support

Our Technical Specialists are always ready to answer your toughest questions- fast.

## 6. Discount pricing

We offers on many of our products when you buy.

## 7. No minimum order size

Order as much or as little as you need. From one item to a large quantity we are happy to handle orders of any size.

## 8. Multiple payment option

We accept Cheque/DD or you can deposit the payment in any of our following bank accounts according to your convenience in IN FAVOUR OF JJ ORTHODONTICS PVT LTD.

All shipments will be delivered against advance payment in our account. JJ will not entertain any credits.

<b>BANK</b>	<b>BRANCH</b>	<b>ACCOUNT NUMBER</b>	<b>IFSC CODE</b>
STATE BANK OF INDIA	CHALAKUDY	31562351324	SBIN0003285

### Head Office

JJ Orthodontics Pvt Ltd, IX/100 (Old No. VII/202E), Munipara, Kanjirapilly P.O, Thrissur Dist, Kerala, India - 680721

Visit : [www.jjortho.com](http://www.jjortho.com)

### Customer Relations

8589007120 / 8589017120

# Contents

<b>PRODUCTS.....</b>	<b>5-8</b>
JJORTHOX. ....	5
SELFY.....	6
JJOCEAN.....	7
OPERA MINI .....	8

# Our Strengths

Global Quality Standards

World-Class Infrastructure

Established Manufacturing Base

Research & Development Capabilities

Superior Customer Service

## Head Office

JJ Orthodontics Pvt Ltd, IX/100 (Old No. VII/202E),  
Munipara, Kanjirapilly P.O., Thrissur Dist, Kerala,  
India - 680721

Visit : [www.jjortho.com](http://www.jjortho.com)

+91 8589017120

+04802749000



*From the desk of  
Managing Director*

JJ Orthodontics is a manufacturing company in India with the most modern technologies and expert personnel capable of designing and manufacturing complete orthodontic products. Leveraging on the state of the art technology, we are keen on developing products of high precision and global standards. Our manufacturing unit with special MIM facility enables concepts to be evolved as quality products.

We are a manufacturer focused on exporting our products worldwide. Based on extensive research and countless efforts for development, JJ Orthodontics has offered MIM one piece bracket to the orthodontic world across the globe. We are truly proud of our vast and satisfied customer base.

Our unflinching commitment to doctors and their satisfaction has always been a priority for JJ Orthodontics. So I would appreciate an opportunity to meet you and discuss about our products and our prospective association with you in future.

**DR. JIJU JOHN**

# JJORTHOX

One Piece MIM Bracket



Ball hook



Central scribe line



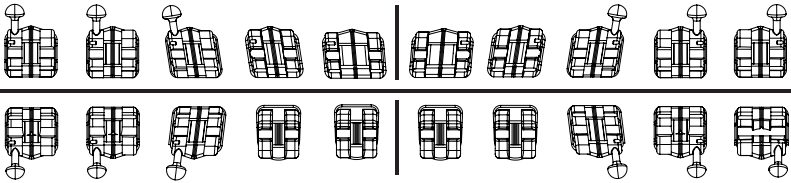
MIM Base Design

Qty-20 Pcs (1 Case)

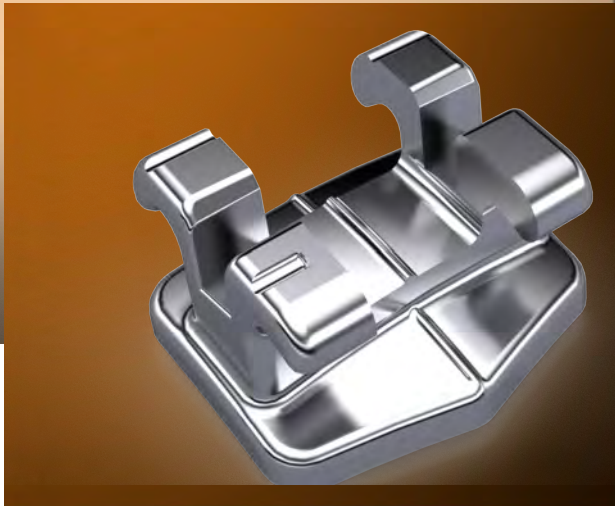
**0.022 SLOT**

**REF P1-OR**

PART NUMBER	P1-OR015	P1-OR015	P1-OR014	P1-OR013	P1-OR012	P1-OR005	P1-OR006	P1-OR007	P1-OR008	P1-OR008
SLOT HEIGHT	0.022	0.022	0.022	0.022	0.022	0.022	0.022	0.022	0.022	0.022
SLOT LENGTH	3.15	3.15	3.02	3.00	3.81	3.81	3.00	3.02	3.15	3.15
IN/OUT	0.73	0.73	0.53	0.89	0.66	0.66	0.89	0.53	0.73	0.73
TORQUE	-7°	-7°	-7°	10°	17°	17°	10°	-7°	-7°	-7°
ANGULATION	0°	0°	8°	8°	4°	4°	8°	8°	0°	0°



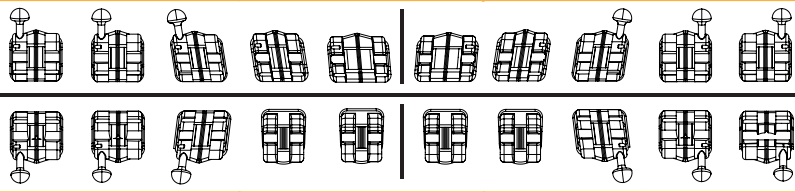
ANGULATION	2°	2°	3°	0°	0°	0°	0°	3°	2°	2°
TORQUE	-17°	-12°	-6°	-6°	-6°	-6°	-6°	-6°	-12°	-17°
IN/OUT	0.86	0.76	0.51	1.14	1.14	1.14	1.14	0.51	0.76	0.86
SLOT LENGTH	3.17	3.17	3.02	2.67	2.67	2.67	2.67	3.02	3.17	3.17
SLOT HEIGHT	0.022	0.022	0.022	0.022	0.022	0.022	0.022	0.022	0.022	0.022
PART NUMBER	P1-OR011	P1-OR010	P1-OR009	P1-OR001	P1-OR001	P1-OR001	P1-OR001	P1-OR002	P1-OR003	P1-OR004



Qty-20 Pcs (1 Case)

**0.022 SLOT**  
**REF P1-C3**

PART NUMBER	P1-C3015	P1-C3015	P1-C3014	P1-C3013	P1-C3012	P1-C3005	P1-C3006	P1-C3007	P1-C3008	P1-C3008
SLOT HEIGHT	0.022	0.022	0.022	0.022	0.022	0.022	0.022	0.022	0.022	0.022
SLOT LENGTH	2.80	2.80	2.80	2.80	2.80	2.80	2.80	2.80	2.80	2.80
IN/OUT	0.70	0.70	0.67	1	0.97	0.97	1	0.67	0.70	0.70
TORQUE	-11°	-11°	7°	8°	12°	12°	8°	7°	-11°	-11°
ANGULATION	2°	2°	5°	9°	5°	5°	9°	5°	2°	2°



ANGULATION	2°	2°	5°	0°	0°	0°	0°	5°	2°	2°
TORQUE	-17°	-12°	7°	-6°	-6°	-6°	-6°	7°	-12°	-17°
IN/OUT	0.97	0.87	0.67	1	1	1	1	0.67	0.87	0.97
SLOT LENGTH	2.80	2.80	2.80	2.80	2.80	2.80	2.80	2.80	2.80	2.80
SLOT HEIGHT	0.022	0.022	0.022	0.022	0.022	0.022	0.022	0.022	0.022	0.022
PART NUMBER	P1-C3011	P1-C3010	P1-C3009	P1-C3001	P1-C3001	P1-C3001	P1-C3001	P1-C3002	P1-C3003	P1-C3004

# JJOCEAN

Low Profile Bracket

Rhomboid Low Profile Design

Expanded Tie Wing Under Cuts

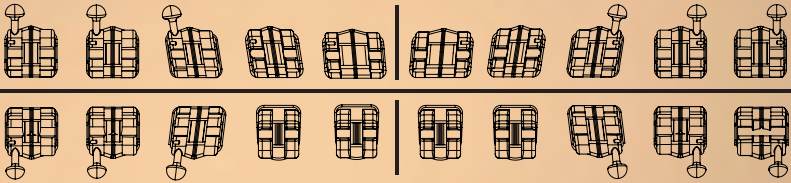
Chamfered slot



Qty-20 Pcs (1 Case)

**0.022 SLOT**  
**REF P1-ML**

PART NUMBER	P1-ML030	P1-ML030	P1-ML029	P1-ML028	P1-ML027	P1-ML020	P1-ML021	P1ML022	P1-ML023	P1-ML023
SLOT HEIGHT	0.022	0.022	0.022	0.022	0.022	0.022	0.022	0.022	0.022	0.022
SLOT LENGTH	3.00	3.00	3.00	2.72	3.36	3.36	2.72	3.00	3.00	3.00
IN/OUT	0.82	0.82	0.58	0.97	0.78	0.78	0.97	0.58	0.82	0.82
TORQUE	-7°	-7°	0°	10°	17°	17°	10°	0°	-7°	-7°
ANGULATION	0°	0°	8°	8°	4°	4°	8°	8°	0°	0°



ANGULATION	2°	2°	3°	0°	0°	0°	0°	3°	2°	2°
TORQUE	-17°	-12°	0°	-6°	-6°	-6°	-6°	0°	-12°	-17°
IN/OUT	0.96	0.85	0.55	1.15	1.15	1.15	1.15	0.55	0.85	0.96
SLOT LENGTH	3.00	3.00	3.05	2.40	2.40	2.40	2.40	3.05	3.00	3.00
SLOT HEIGHT	0.022	0.022	0.022	0.022	0.022	0.022	0.022	0.022	0.022	0.022
PART NUMBER	P1-ML026	P1-ML025	P1-ML024	P1-ML016	P1-ML016	P1-ML016	P1-ML016	P1-ML017	P1-ML018	P1-ML019

# Opera Mini Bracket

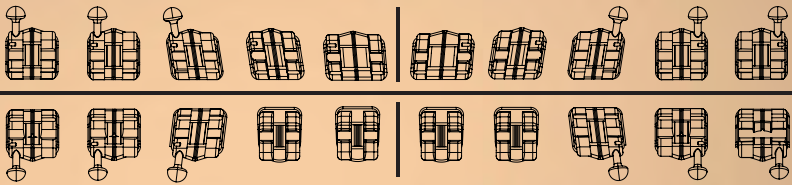


Qty-20 Pcs (1 Case)

**0.022 SLOT**

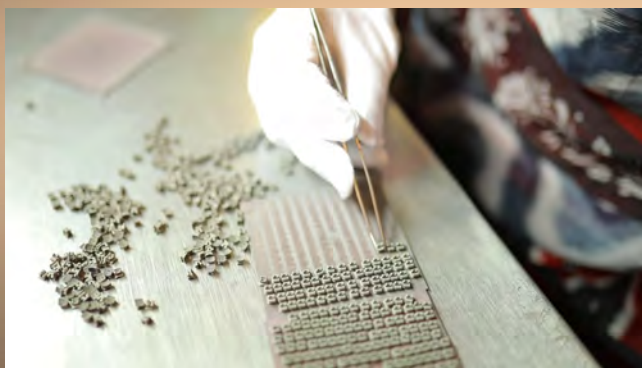
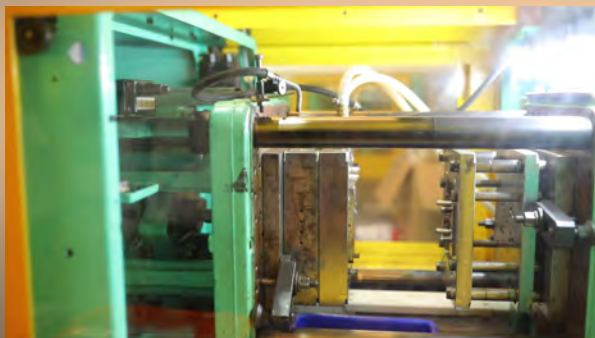
**REF P1-MI**

PART NUMBER	P1-MI015	P1-MI014	P1-MI013	P1-MI012	P1-MI011	P1-MI021	P1-MI022	P1-MI023	P1-MI024	P1-MI025
SLOT HEIGHT	0.022	0.022	0.022	0.022	0.022	0.022	0.022	0.022	0.022	0.022
SLOT LENGTH	3.00	3.00	3.00	2.7	3.35	3.35	2.7	3.00	3.00	3.00
IN/OUT	0.73	0.73	0.55	0.89	0.66	0.66	0.89	0.55	0.73	0.73
TORQUE	-7°	-7°	0°	10°	17°	17°	10°	0°	-7°	-7°
ANGULATION	0°	0°	8°	8°	4°	4°	8°	8°	0°	0°



ANGULATION	2°	2°	3°	0°	0°	0°	0°	3°	2°	2°
TORQUE	-17°	-12°	0°	-6°	-6°	-6°	-6°	0°	-12°	-17°
IN/OUT	0.94	0.84	0.51	1.14	1.14	1.14	1.14	0.51	0.84	0.94
SLOT LENGTH	3.0	3.0	3.0	2.4	2.4	2.4	2.4	3.0	3.0	3.0
SLOT HEIGHT	0.022	0.022	0.022	0.022	0.022	0.022	0.022	0.022	0.022	0.022
PART NUMBER	P1-MI045	P1-MI044	P1-MI043	P1-MI031	P1-MI031	P1-MI031	P1-MI031	P1-MI033	P1-MI034	P1-MI035

# How It is Made



# How It is Made



 **JJ ORTHODONTICS**  
*For Everlasting Smile*



[www.jjortho.com](http://www.jjortho.com) | sales