

MODERN
HOMES
REALTY

An exclusive collection of Joseph Eichler's original floor plans.

Modern Homes Realty owns the exclusive rights to eichler home plans for new construction & the only company offering full working drawings to clients. Buyer can not duplicate, sell or show these plans to anyone.

Our team is dedicated to continuing the legacy of this great architecture and wonderful community.



FREQUENTLY ASKED QUESTIONS

1. What size lot do I need to build my Eichler?

- 50 x 100 sq ft

2. What is included in my plans?

- The full working plans (including structural) for building the Eichler for one house (you must get up to code for your city)

3. Can I customize the plans?

- Only to expand the sizing.

4. Do you offer a discount?

- Yes, if you purchase multiple plans.

5. How will I get my plans?

- They will come electronically

6. Do you have pictures of the houses built?

- For some houses we do and will look to add more as we are able to.

7. Can I look at the plan before purchasing?

- Unfortunately not due to security reasons.

8. How much will it cost for each plan?

- \$10,000 each

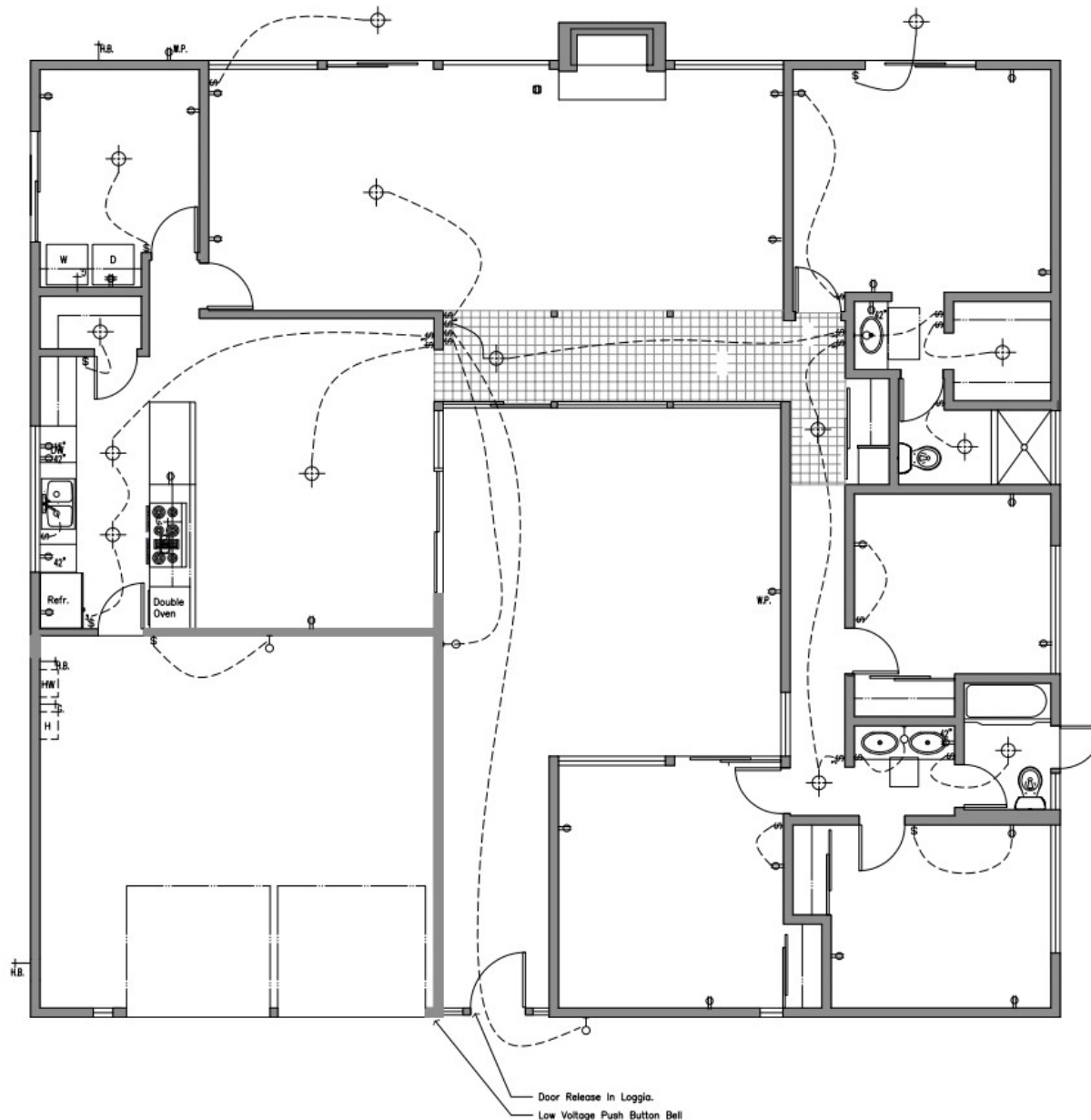
Eichler
Model MC-674



Project Summary:	
Conditioned Floor Area	2000 SF
Garage Floor Area	462 SF
Atrium Floor Area	450 SF
Total Floor Area	2912 SF

Eichler
Model MC-674

MODERN
HOMES
REALTY



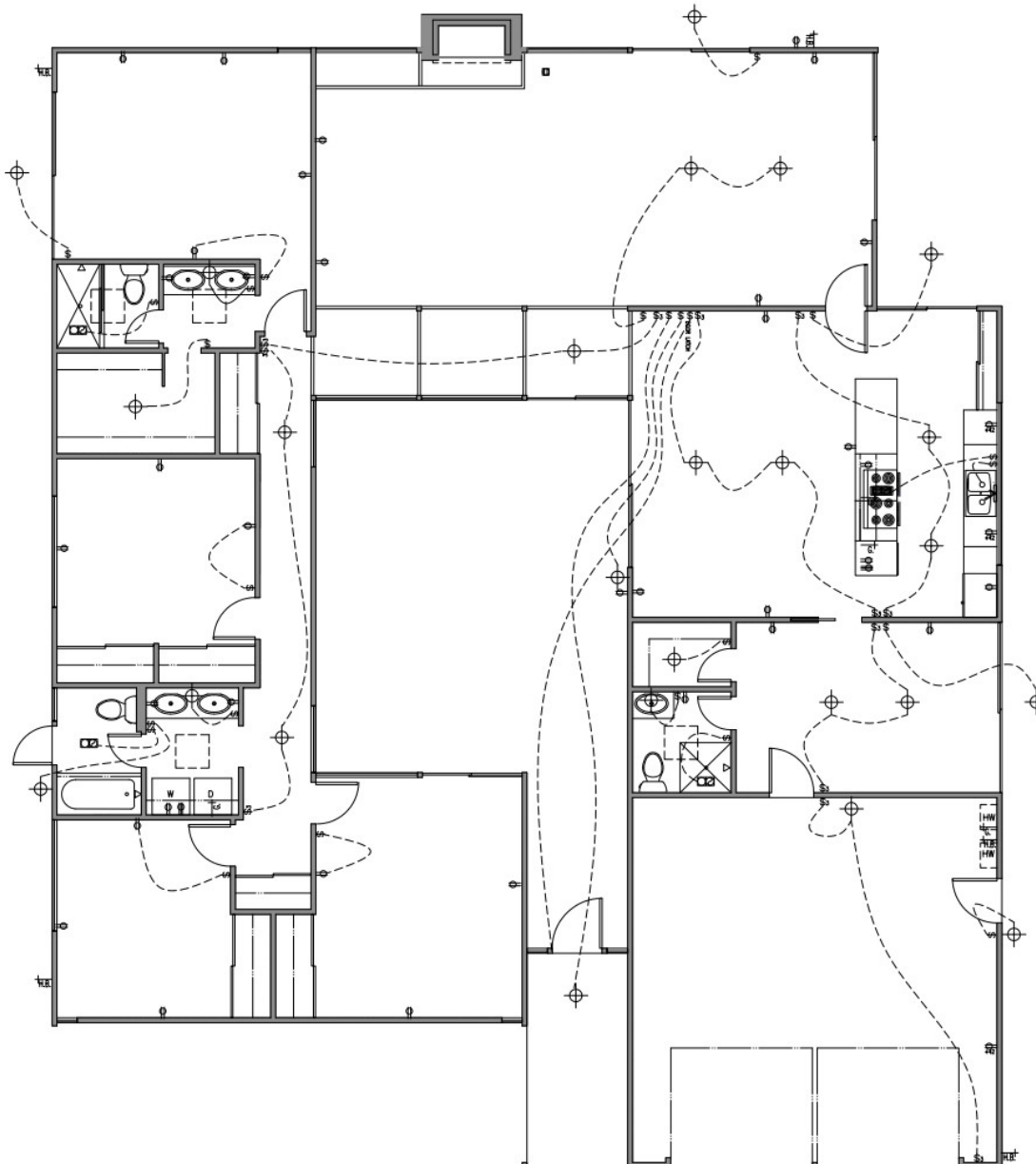
Legend

- \$0 Switch, D = Dimmer
- \$2 Three-way switch
- ☐ Duplex outlet, +42 = mounting height above cabinets
- ☐ 220 Amp Duplex outlet
- ☐ Quadruplex outlet
- ☐ Duplex outlet with Ground Fault Circuit Interrupter
- ☐ Duplex floor / ceiling outlet
- ☐ Gas valve
- Gas connection
- Hose Bib
- ☐ Ceiling mounted or pendant light fixture
- ☐ Recessed light fixture, FL = Fluorescent, WP = Water protector
- ☐ Recessed light fixture (lighting wall in arrow direction)
- ☐ Wall mounted light fixture
- ☐ Smoke Detector, Hard Wired
- ☐ Telephone outlet (main line)
- ☐ Data outlet (coordinate with Owner)
- ☐ Combination Fan/ Light
- ☐ Undercabinet Fluorescent Light
- \$as Manual-on occupancy sensor & motion sensor to comply w/CEC Sec. 119(d) & shall not allow to be turned on automatically and shall not have an override allowing light to be always on
- ☐ Ceiling fan and light fixture

Eichler
Model ATH-7



Project Summary:	
Conditioned Floor Area	2403 SF
Garage Floor Area	509 SF
Atrium Floor Area	411 SF
Total Floor Area	3323 SF



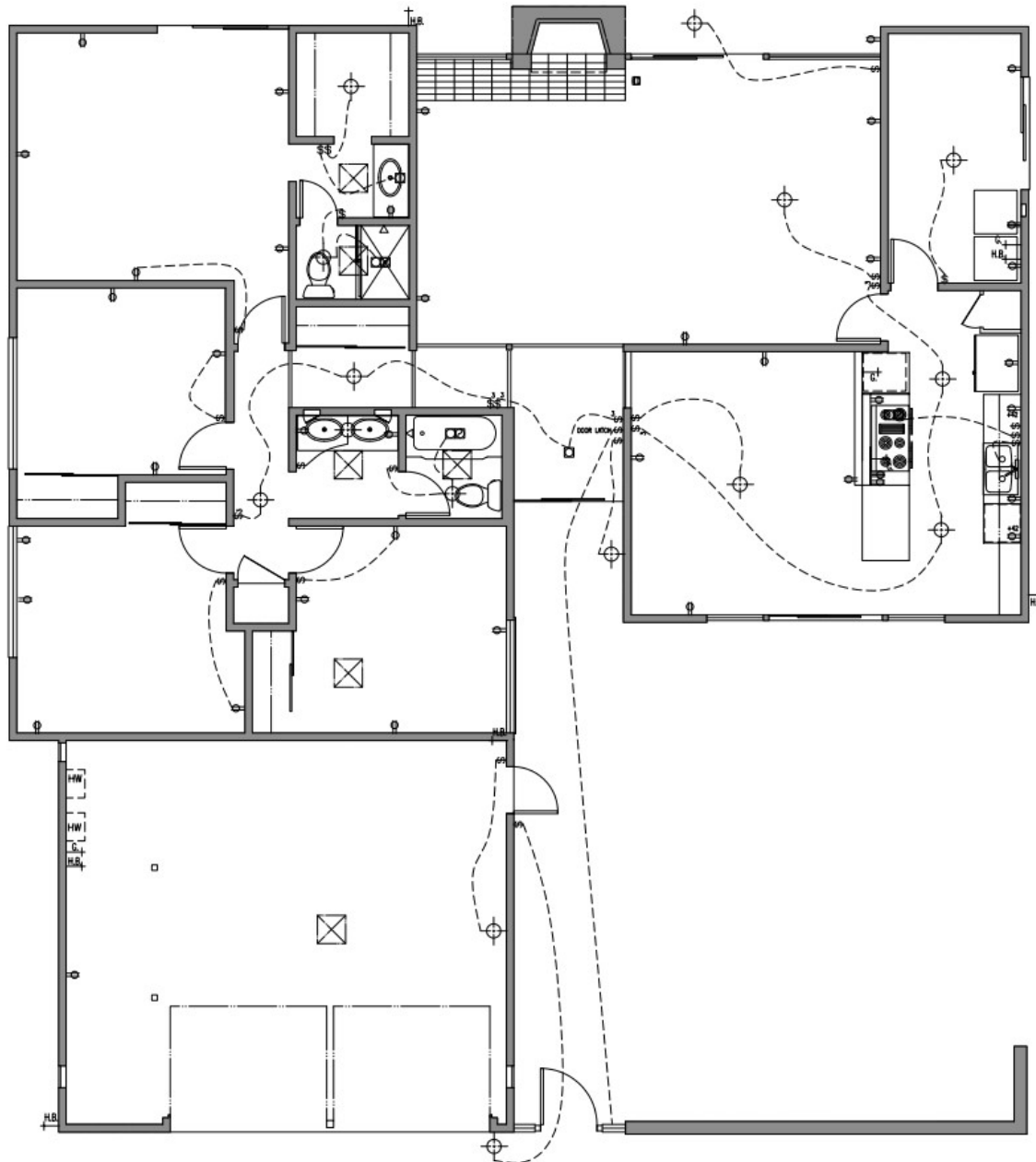
Legend

- \$S Switch, D = Dimmer
- \$3 Three-way switch
- RE Duplex outlet, +42 = mounting height above cabinets
- 220 Amp Duplex outlet
- QD Quadruplex outlet
- GFI Duplex outlet with Ground Fault Circuit Interrupter
- DF Duplex floor / ceiling outlet
- GV Gas valve
- GC Gas connection
- HB Hose Bib
- CL Ceiling mounted or pendant light fixture
- RP Recessed light fixture, FL = Fluorescent, WP = Water protection
- RL Recessed light fixture (lighting wall in arrow direction)
- WL Wall mounted light fixture
- SD Smoke Detector, Hard Wired
- TO Telephone outlet (main line)
- DO Data outlet (coordinate with Owner)
- CF Combination Fan/ Light
- UL Undercabinet Fluorescent Light
- MS Manual-on occupancy sensor & motion sensor to comply w/CEC Sec. 119(d) & shall not allow to be turned on automatically and shall not have an override allowing light to be always on
- CLF Ceiling fan and light fixture

Eichler
Model MC-554



Project Summary:	
Conditioned Floor Area	2403 SF
Garage Floor Area	509 SF
Atrium Floor Area	411 SF
Total Floor Area	3323 SF



Legend

- \$o Switch, D = Dimmer
- \$3 Three-way switch
- ⎓ Duplex outlet, +42 = mounting height above cabinets
- ⎓ 220 Amp Duplex outlet
- ⎓ Quadruplex outlet
- GFI Duplex outlet with Ground Fault Circuit Interrupter
- Duplex floor / ceiling outlet
- ⊠ Gas valve
- ⎓ Gas connection
- H.B. Hose Bib
- ⊙ Ceiling mounted or pendant light fixture
- ⎓ WP Recessed light fixture, FL = Fluorescent, WP = Water protection
- ⎓ Recessed light fixture (lighting wall in arrow direction)
- ⎓ Wall mounted light fixture
- ⊙ Smoke Detector, Hard Wired
- ⎓ Telephone outlet (main line)
- ⎓ Data outlet (coordinate with Owner)
- ⎓ Combination Fan/ Light
- ⎓ Undercabinet Fluorescent Light
- \$as Manual-on occupancy sensor & motion sensor to comply w/CEC Sec. 119(d) & shall not allow to be turned on automatically and shall not have an override allowing light to be always on



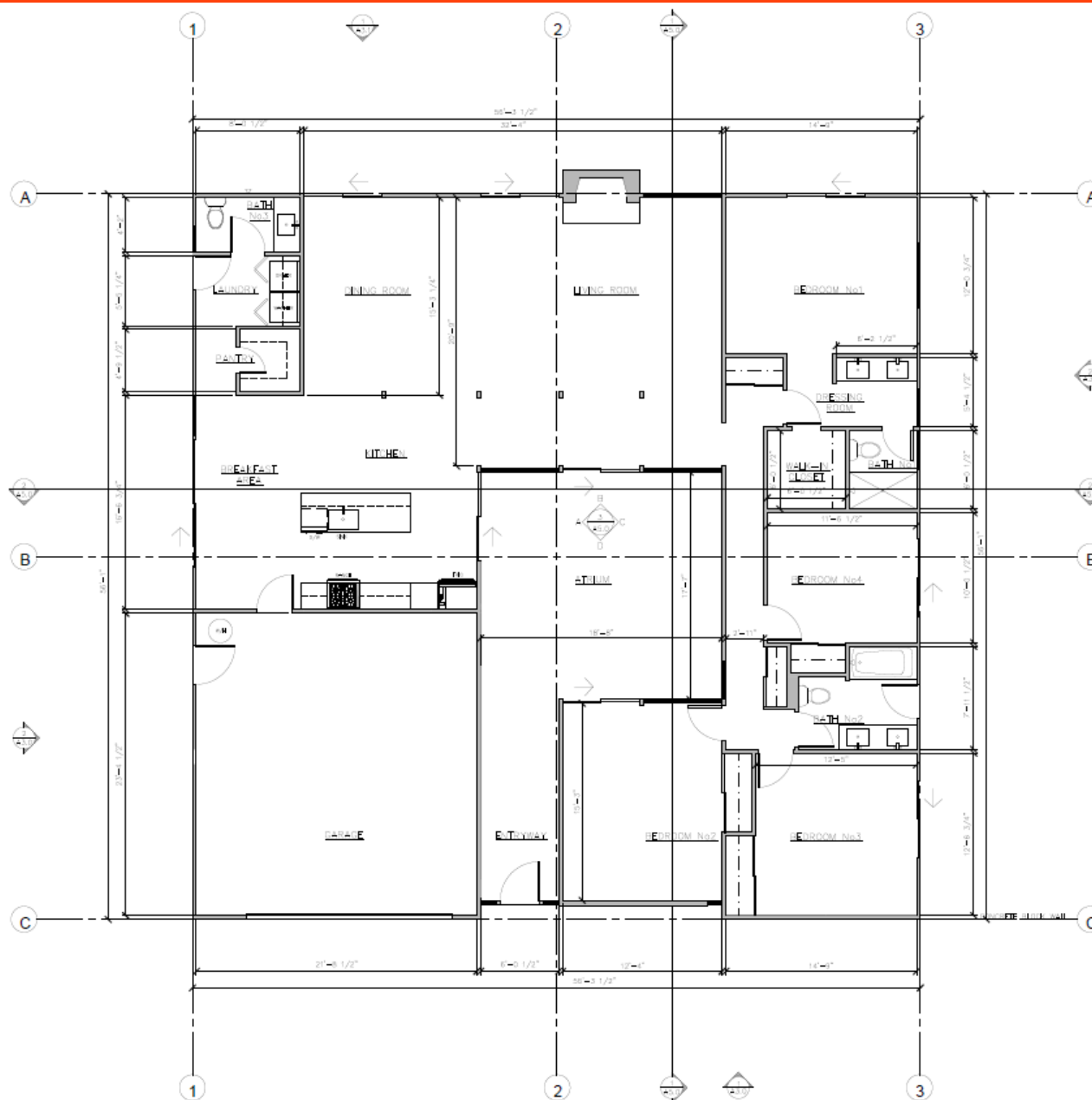
Eichler
Model MS-234



Project Summary:
Livable Floor Area
Garage Floor Area
Atrium Floor Area
Total Floor Area

2177.3 SF
534.07 SF
423.9 SF
3135.27 SF

**MODERN
HOMES
REALTY**





About Monique Anton

Monique Anton is the broker and CEO of Modern Homes Realty. She has been featured in national magazines like Dwell, Realtor.com, California Home and Design, Curbed, and Architect Magazine for her work rejuvenating Eichler Homes and specializing in modern home sales. With a college degree for film and media, she has produced films about Modernism to educate buyers. Her presentation using video is effective for home selling and her negotiation skills have put her at the top of her market. Considered an evangelist for Mid-Century Modern style homes, she has done much with her team to revitalize interest in rescuing and preserving their legacy. Modern Enthusiasts know to contact her for this specific architecture.

DRE#01879145

monique@modernhomesrealty.com

www.modernhomesrealty.com

Keeping Joseph Eichler's spirit alive



Where did you get the idea to re-create Eichler floor plans?

The supply is so low compared to the demand, and some developers end up tearing them down because they're on big pieces of land, so they've become like an endangered species. [After getting the Eichler family's blessing], I went to Stantec, which had the rights to the floor plans, and bought 60. The president wasn't sure anyone would care, but people were immediately enthusiastic about it.

