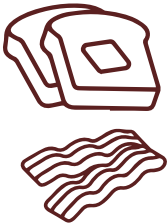




**THE COURTYARD**  
AT BOTSWANACRAFT

# BREAKFAST

SERVED FROM  
9AM-12PM



## OATS PORRIDGE & HONEY

A warm bowl of oats porridge with honey...**60**

## SUNRISE BREAKFAST

Scrambled/fried/poached eggs, two bacon rashers on two slices of toast....**60**

## FULL BREAKFAST

Scrambled/fried/poached eggs, bacon, grilled tomato, pork/beef sausage, mushrooms and baked beans served with toast....**100**

## MEGA BREAKFAST

Two eggs, bacon, grilled tomato, mushrooms, and 150g fillet steak served with toast....**120**

## OMELETTE

With choice of three fillings: Cheese, Tomato, Mushroom, Onion, Bacon, Green Pepper, Ham....**100**

## CHICKEN LIVERS

Simmered in a tomato and onion sauce with phaphatha or toast....**70**

---

# FARM STYLE BREAKFAST

**NEW**

Served in a hot cast iron pan, two sausages (pork/beef), crispy bacon, tomato and two eggs topped with cheddar cheese and served with two slices of toast.....**90**

---

# LIGHT BITES



## BBQ KEBABS

BBQ basted chicken or beef skewers served with chips....**70**

## SESWAA BITES

Our traditional beef seswaa fried in batter, and served with chips....**70**

## PLATE OF CHIPS ....50

# TOASTED SAND WICHES

SERVED WITH  
CHIPS & SALAD

## CHEESE & TOMATO ....80

## HAM & CHEESE....80

## CHICKEN MAYO....80

## TUNA MAYO....80

## BACON & EGG....80

## BACON, LETTUCE & TOMATO....80

# SALADS



SERVED WITH SIDE DRESSING

## SPICY CHICKEN....100

## BACON & AVO....100

## PAPAYA & AVO (SEASONAL) ....100

## GREEK SALAD ....100

## TUNA SALAD....100

 VEGETARIAN

 CONTAINS NUTS



# TSWANA CLASSICS

SERVED FROM  
12PM-3PM



## SIDE SAUCES



- TOMATO & ONION...25
- PEPPER...40
- GARLIC...30
- MUSHROOM...30
- MORO WA SETSWANA...25
- TARTAR SAUCE...25
- CHILLIES...20

## SERVED WITH A CHOICE OF:

### STARCH

Phaletshe  
Bogobe Jwa Lerotse  
Le Dombi (Dumpling)

Rice  
Chips  
Mashed Potato

### AND VEG

Mma D's Morogo   
Spinach  
Green Salad

Morogo Wa Setswana  
Butternut  
Roasted Veg

### SESWAA SA KGOMO

Traditional slow-cooked and pounded beef....100

### SESWAA SA PUDI

Traditional slow-cooked and pounded goat....110

### OXTAIL

Stewed, fried or boiled Setswana style....160

### NAMA YA KGOMO

Juicy beef medallions stewed, fried, or boiled, traditional Setswana style....100

### NAMA YA PUDI

Goat meat medallions, stewed, fried, or boiled Setswana style....110

### NAMA YA NKU

Lamb stewed, fried, or boiled Setswana style....130

### SEROBE

Tripe – A local delicacy with a distinct, delicious flavour....100

### KOKO YA SETSWANA

Free-range chicken prepared the traditional Setswana style....110

### LAMB CURRY

Lamb in a creamy spinach curry sauce....140

### GRILLED ¼ CHICKEN

Flame-grilled chicken basted with a smoky BBQ marinade....110

### PORK CHOPS

Grilled pork chops marinated in a homemade lemon and herb sauce....140

### BREAM

Pan fried whole bream (please allow 30min preparation time)....130

### GRILLED T-BONE

Flame-grilled 350g T-Bone steak basted in a BBQ marinade....140

### PEPPER STEAK

300g of tender fillet steak, topped with a creamy pepper sauce....140

### BACON, LIVER & ONION

Beef liver with crispy bacon and fried onions....110

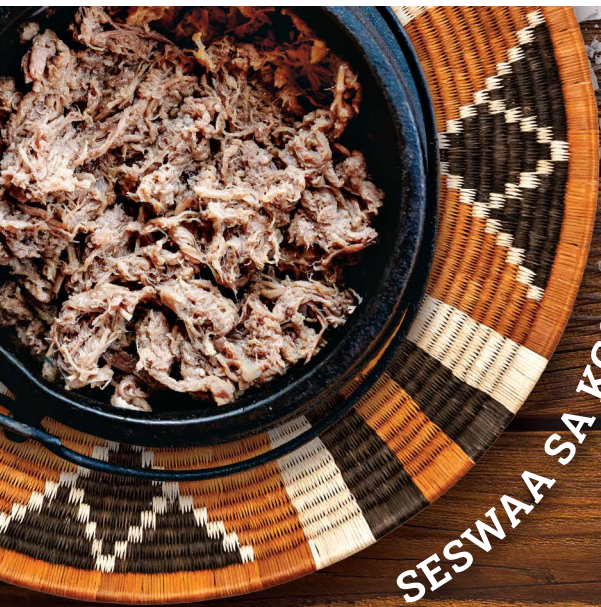
### 3 BEAN MAIN

A combination of kidney, sugar and butter beans....90

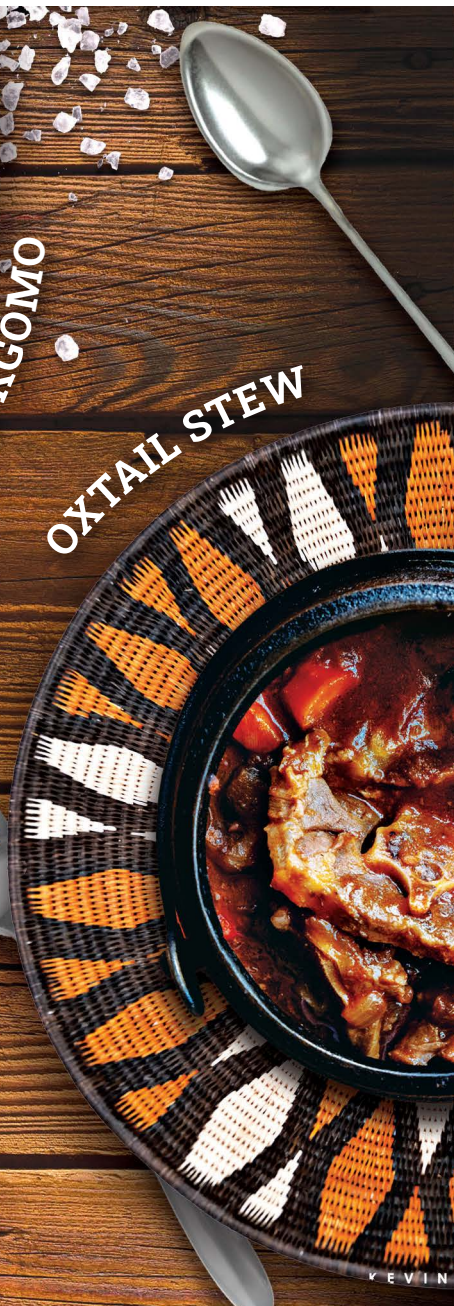
 VEGETARIAN

 CONTAINS NUTS





SESWAA SA KGOMO



OXTAIL STEW



VEGETARIAN PIZZA



PHAPHATA



FULL BREAKFAST



# BURGERS

SERVED FROM  
12PM-3PM



SERVED WITH CHIPS & SIDE SALAD

## BEEF BURGER

Flame-grilled beef patty with crisp lettuce, tomato in our mustard basting...**100**

## CHICKEN BURGER

Grilled chicken breast lettuce, tomato slices in our mustard basting...**100**

## VEGETARIAN BURGER

Our homemade chickpea patty with fresh lettuce and tomato in our mustard basting...**100**

## MAKE IT YOUR OWN

Add extra flavour: Cheese...**25** Bacon...**30**  
Fried Egg...**10** Additional Patty...**30**

# PIZZAS

SERVED FROM  
12PM-3PM



## MARGHERITA

A rich tomato base topped with Mozzarella cheese and origanum...**100**

## REGINA

Ham, garlic & mushrooms...**120**

## FOUR SEASONS

Black olives, ham, mushrooms & artichoke...**130**

## MEAT LOVERS

Chicken strips, mince, mushrooms & onion...**140**

## SESWAA

Beef seswaa & caramelised onion...**130**

## MEXICAN

Mince, onions, chilli, green pepper & beans...**130**

## MEDITERRANEAN

Chicken, peppadews & caramelised onions...**120**

## VEGGIE SUPREME

Spinach, sun dried tomato & feta cheese...**110**

## KIDDIES PIZZA

Margherita base with your choice of chicken, ham or bacon...**80**

# EXTRAS

Tomato...**15**

Mushroom...**15**

Onion...**15**

Peppers...**15**

Garlic...**15**

Chilli...**20**

Spinach...**20**

Sundried Tomato...**20**

Peppadew...**20**

Olives...**20**

Chicken...**30**

Anchovy...**30**

Feta...**25**

Ham...**25**

Bacon...**30**

Avocado...**30**

Mozzarella...**30**



VEGETARIAN



CONTAINS NUTS

## DESSERT



### CARROT CAKE <sup>N</sup>

Made with grated carrots and a rich cream cheese frosting, topped with pecan nuts....**40**

### APPLE CRUMBLE

A buttery pastry base filled with apples and cinnamon, topped with a golden crumble....**50**

### ICE CREAM DELIGHT

Two scoops of vanilla ice cream with chocolate sauce....**30**

## HOT DRINKS



### TEAS (VARIOUS OPTIONS)....20

AMERICANO....25

ESPRESSO....25

LATTE....30

CAPPUCCINO....25

CAFE MOCHA....30

HOT CHOCOLATE....30

## FRESHLY SQUEEZED JUICE

Please ask your waiter about the seasonal fruits

ORANGE....35

APPLE....35

APPLE & CARROT....40

HOMEMADE LEMONADE....35



## MILK SHAKES



CHOCOLATE....40

VANILLA....40

STRAWBERRY....40

OREO....45

ICED FRAPPE....45

## SOFT DRINKS



STILL WATER....15

SPARKLING WATER....18

SOFT DRINKS....20

LIQUIFRUIT....26

MIXERS (200ML)....20

TISERS....26



(+267) 73 100 400



**Botswanaacraft  
Marketing**

## COCKTAILS



### STRAWBERRY DAIQUIRI

Rum, lime, strawberry juice, strawberry syrup, & crushed ice **70**

### MOJITO

Rum, fresh mint, soda water, sugar syrup & crushed ice **70**

### MARGARITA

Tequila silver, Triple Sec liqueur, lime juice, & crushed ice **80**

### SEX ON THE BEACH

Vodka, Triple Sec liqueur, lime, cranberry juice, & orange juice **85**

### RAINBOW CRAFT

Gin, vodka, orange juice, grenadine, cranberry juice & blue curaçao **85**

### COSMOPOLITAN

Vodka, Triple Sec liqueur, lime juice, & cranberry juice **75**

### PINK FIZZ

Gin, rose cordial, fresh lime juice, & soda water **75**

### LONG ISLAND ICE TEA

Rum, Tequila silver, gin, Triple Sec liqueur, vodka, fresh lime juice, coke & crushed ice **95**

## MOCKTAILS



### MALAWI SHANDY

Lemonade, ginger ale, & bitters **38**

### ROCK SHANDY

Lemonade, soda water, & bitters **38**

### VIRGIN SEX ON THE BEACH

Grenadine, Lime, cranberry, & orange juice **50**

### VIRGIN DAIQUIRI

Crushed ice, strawberry syrup, strawberry juice & lime **50**

### VIRGIN MOJITO

Crushed ice, fresh mint, lime, sugar syrup & soda water **50**

### STEELWORKS

Kola tonic, ginger ale, passion fruit, lemonade & bitters **45**

## THE COURTYARD

AT BOTSWANACRAFT

(+267) 73 100 400



## CIDERS

HUNTERS DRY/GOLD 35  
BRUTAL FRUIT 35  
SAVANNA DRY 35  
BERNINI BLUSH 35  
BERNINI CLASSIC 35

## SPIRITS

GORDON'S 30  
TANQUERAY 35  
BOMBAY 35  
OKAVANGO GIN 35  
SMIRNOFF 30  
ABSOLUT 35  
JACK DANIEL'S 35  
JAMESON 35  
JW BLACK LABEL 40  
HENNESSY 50  
GLENFIDDICH 12 YEARS 50  
KWV 5 YEAR 30  
KWV 10 YEAR 40  
CAPTAIN MORGAN 30  
BACARDI 30

## HOUSE WINES

RED: ROBERTSON THE BLEND 30  
WHITE: ROBERTSON SAUV BLANC 30

## BEERS

BLACK LABEL 25  
CASTLE LITE 25  
ST. LOUIS 25  
WINDHOEK DRAFT 30  
HEINEKEN/SILVER 30  
CORONA 30

## SHOOTERS

AMARULA 30  
JAGERMEISTER 35  
OLMECA SILVER 25  
OLMECA GOLD 30



## WHITE WINE PER BOTTLE

### SAUVIGNON BLANC

FAT BASTARD 250  
SPRINGFIELD LIFE FROM STONE 320

### CHARDONNAY

FAT BASTARD 250  
LA MOTTE 300

### CHENIN BLANC

SIMONSIG P200  
FAT BASTARD P250

## RED WINES PER BOTTLE

### RED BLENDS

KANONKOP KADETTE  
CAPE BLEND 350  
RUPERT & ROTHSCHILD  
CLASSIQUE 450

### MERLOT

KWV P250  
FAT BASTARD P280

### SPARKLING WINES

KRONE BRUT 350  
KRONE NIGHT NECTAR ROSE 350



**Botswanacraft  
Marketing**