

ELECTRIFY EQUITY ANNUAL REPORT PRESENTATION

Ensuring Equitable Electrification



ELECTRIFY EQUITY INC.

OUR MISSION & VISION

OUR MISSION

At Electrify Equity, our mission is to ensure equitable electrification in underserved communities by providing affordable charging solutions and energy efficiency upgrades, fostering community engagement, and green workforce pathways.

OUR VISION

Electrify Equity has pledged to champion equitable access to electrification and energy efficiency in underserved communities, recognizing their role in sustainable transportation, affordable living, environmental equity, and economic expansion.



MESSAGE FROM OUR LEADERSHIP

“This past year marked a turning point for Electrify Equity. What began as a vision on paper became real impact in real communities – neighbors gaining access to clean energy solutions, families lowering energy burdens, and pathways opening toward sustainable careers. None of this would have been possible without the dedication of our board, volunteers, donors, and community partners who believed in the mission from day one. Together, we are proving that when equity leads the way, lasting change follows.”



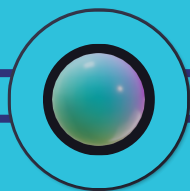
DEEDRA SIMMONS, EXECUTIVE DIRECTOR

2035/2036: YEAR IN NUMBERS



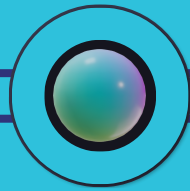
KEY ACHIEVEMENTS & MILESTONES

Q1



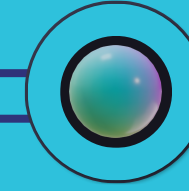
Became the only nonprofit selected to participate in the Propellant Labs Cleantech Accelerator, expanding organizational capacity, partnerships, and clean energy market readiness.

Q2



Launched community education programming including public workshops, library events, and webinars focused on energy savings, electrification, and workforce awareness.

Q3



Secured our first grant award of \$100,000 from the Maryland Energy Administration to support residential energy equity and community outreach initiatives.

Q4



Secured a second competitive grant award through Thriving Communities to expand community outreach and program delivery across Prince George's County, Maryland.



NOTEWORTHY STORY OF IMPACT

JANICE BERRY

Janice Berry is a retired mother of two living in Forest Heights, Maryland. Like many residents on a fixed income, she was struggling with rising utility costs, often receiving Pepco bills exceeding \$500 per month. For Janice, these costs were simply not sustainable and created ongoing financial stress.

After connecting with Electrify Equity, Janice learned about available energy efficiency resources, utility rebates, and low-cost home improvements that could make an immediate difference in her home. With guidance from Electrify Equity and trusted community partners, she was able to take the first steps toward improving her home's energy efficiency and lowering her monthly energy burden.

Through Electrify Equity's partnership with the Maryland Energy Administration, Janice will be signing up for a free home energy audit, helping her identify long-term solutions to reduce energy use, improve comfort, and create lasting savings.

FINANCIAL SUMMARY

OUR COMMITMENT: TRANSPARENCY. ACCOUNTABILITY. MAXIMUM IMPACT.

TOTAL REVENUE

 **\$48,554.71**

TOTAL EXPENSES

 **\$9,344.00**

NOTE FROM ELECTRIFY EQUITY

In 2025, Electrify Equity secured \$175,000 in competitive grant funding, supplemented by strong individual contributions and in-kind community support. The organization maintained responsible fiscal management, ending the year with a healthy operating surplus to support program growth and grant implementation in 2026. Our financial strategy prioritizes maximizing community impact while building long-term sustainability and strong compliance systems

ELECTRIFY EQUITY INC.

THE POWER OF OUR COMMUNITY



 www.electrifyequity.org

 info@electrifyequity.org

 5557 Baltimore Ave, Hyattsville, MD 20781

CHALLENGES & LESSONS LEARNED

As we grow, we remain grounded in listening, learning, and strengthening our impact. Challenges may arise, but our commitment to equitable access and community empowerment remains strong. Our community is more than numbers. It is the heartbeat of every success story.

Challenge

As a growing organization, balancing rapid opportunity with operational capacity required thoughtful pacing. New partnerships, grant compliance requirements, and program expansion increased the need for systems, staffing, and process development.

Lesson Learned

Investing early in infrastructure, clear workflows, and strong financial controls positions the organization for sustainable growth and successful grant delivery.



OUR VISION FOR THE FUTURE

In 2026, we will:



⚡ Expand Community Outreach & Education



👷 Strengthen Workforce Pathways



🤝 Deepen Strategic Partnerships



🌍 Expand Regional Footprint



THANK YOU & CALL TO ACTION



*Real change happens when communities, partners, and leaders work together.
Thank you for supporting Electrify Equity and helping expand access to
affordable, clean energy and workforce opportunity.*