

PLAYBILL

POLARIS PERFORMING ARTS ACADEMY
EASTVALE, CA



HEATHERS
The Musical

OCTOBER 17TH - 19TH



Richard O'Brien's

THE
ROCKY HORROR
SHOW

THE BOX THEATER
RIVERSIDE

Polaris Performing Arts Academy

Presents

HEATHERS

The Musical

Book, Music, and Lyrics by

Kevin Murphy and Laurence O'keefe

Based on the Film written by

Daniel Waters

Director

KyMBERli Boynton

Assistant Director/Choreographer

Briana Gonzales-Diaz

Stage Manager

Mercedes Romero

Assistant Choreographer

Joseph Catalano

Music Director

Mark Peterson

Casting Director

Kaitlyn Conner

Performance Dates:

June 12th - 7pm

June 13th - 7pm (U/S Show)

June 14th - 2pm (U/S Show) & 7pm

June 15th - 2pm

Corona Historic Civic Center • 815 W. 6th St. - Corona, CA

*The performance lasts approximately 2 hour and 10 minutes
(including a 15-minute intermission)*

Director's Notes

Welcome to our production of “Heathers: The Musical” — a powerful story that blends dark humor with raw honesty about the emotional turbulence of adolescence. As both a Director and a Psychologist, this show holds special meaning for me. It’s more than a musical — it’s a mirror into the unspoken struggles teens face: identity, peer pressure, mental health, and the longing to feel seen and accepted.

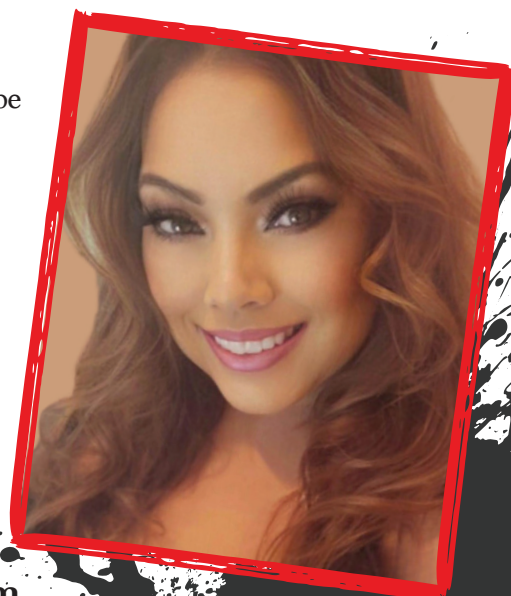
In my clinical work, I see firsthand how many young people wrestle with anxiety, depression, bullying, self-worth, and the fallout of toxic relationships. “Heathers” doesn’t shy away from these realities — it puts them front and center, wrapped in music, satire, and fearless storytelling. That’s what makes it not just entertaining, but transformative.

Our cast has tackled this production with bravery and depth. Through this process, they’ve not only grown as performers, but as emotionally aware and empowered individuals.

I’m deeply proud of each cast member and grateful for the trust they’ve shown in exploring such complex themes. Thank you to all of you for showing up and for leaning into a story that may be uncomfortable — but necessary.

May this performance spark conversation, compassion, and maybe even some personal reflection. Because healing often begins in unexpected places — including the stage.

*Dr. Kymberli
Boynton*



www.kymberliboynton.com



CREW



Assistant Director/Choreographer

Briana Gonzales-Diaz

Assistant Choreographer

Joseph Catalano

Dance Captain

Ashley Eddy

Light Technician

OJ Wilson

Sound Technicians

Kaylee Mertes

Heriberto Noriega

Film Technician

Gary Devon Dotson

NVE Entertainment

Videographer

Anthony Simmons

Stage Manager

Mercedes Romero

Music Director

Mark Peterson

Casting Director

Kaitlyn Conner

Costume Designer

Shane Chandler

Stage Props & Sets

Mike Saffel

Ernesto Avila

John Chickezie

James Aguilera

Front House

Kristy Avila

Rachel Weber

Marketing/Print Media

Mayte Schantz



JCSD

PARKS & RECREATION DEPARTMENT

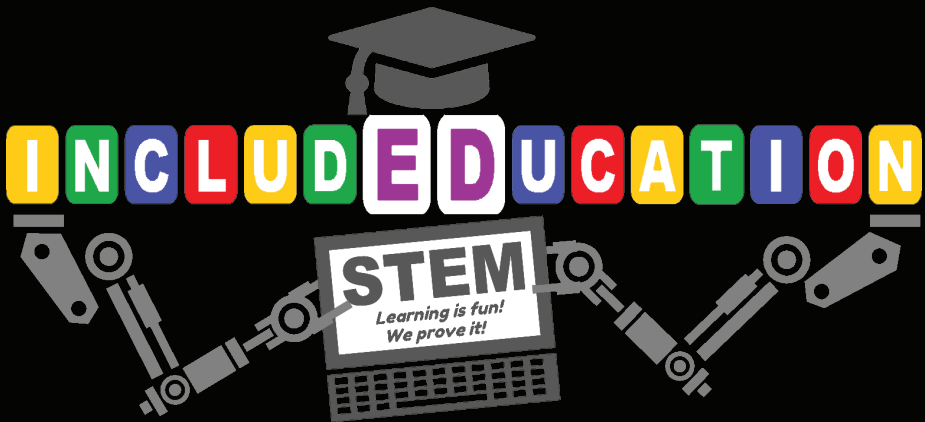


*Polaris Performing
Arts Academy*

NOW ENROLLING!

- Musical Theater Classes
- Polynesian Dance Classes

<https://parksreg.jcsd.us/>



includedEducation offers Camps, Workshops, Homeschool Classes, and After-school Programs at a variety of locations in Southern California and is an approved vendor with your favorite charter schools.

For more information, please visit us at:

www.includededucation.com

Musical Theater Classes - Ages 4+

Musical theater classes offer a mix of acting, singing, and dancing, perfect for stage performance. Students explore vocal techniques, character development, and choreography, learning to express emotions and tell stories through music and movement. With structured exercises and ensemble performances, they gain valuable experience and appreciation for the art form.



These classes cater to all skill levels, fostering confidence and a passion for the stage. They often culminate in showcases or full-scale productions.

Polynesian Dance - Ages 4+

Polynesian dance classes offer a vibrant exploration of traditional dance forms originating from the diverse cultures of the Pacific Islands. Participants immerse themselves in the rich rhythms, graceful movements, and storytelling elements of Polynesian dance styles such as hula, Tahitian, and various other islands of the Pacific.

These classes provide an opportunity for cultural appreciation, physical activity, and artistic expression in a supportive and welcoming environment.



Whether for beginners or experienced dancers, Polynesian dance classes offer a joyful journey into the captivating world of Pacific Island culture and movement.

The "CAST" of 1989



McKenzie Taylor
Veronica Sawyer



Eric Williams
Jason "JD" Dean



Emily Segaar
Heather Chandler



Briana Gonzales-Diaz
Veronica Sawyer (U/S)



Ashley Eddy
Heather Chandler (U/S)



Sienna Perez
Heather Duke



Marina Garrison
Heather McNamara



Makaila Myers
Heather McNamara (U/S)



Andrew Amaya
Ram Sweeney

WESTERBERG HIGH



Joseph Catalano
Ram Sweeney (U/S)



Nathan Lopez
Kurt Kelly



Dayln Snowten
Kurt Kelly (U/S)



Celia Salazar
Martha Dunnstock



Mercedes Romero
Ms. Flemming



Emma Smith
Veronica's Mom



Cedar Haze Pratt
*Big Bud Dean/Ram's Dad/
Coach Ripper*



Jasper Dean Mezzie
*Veronica's Dad/
Principal Gowan*



Clover King
Stoner Chick

The "CAST" of 1989



Brooke Vrab
Young Republicanette



Lillian Myers
New Wave Girl



Jay Jay Manuel Castro
Geek



Nathan Meza
Police Officer



Bryan Fan
Hipster Dork



Vance Gaither
Preppy Stud



Musical Numbers

ACT I

Beautiful (*Veronica, Students*)

Candy Store (*Heather Chandler, Heather Duke, Heather McNamara*)

Fight For Me (*Veronica, Students*)

Candy Store Reprise (*Heather Chandler, Heather Duke, Heather McNamara*)

Freeze Your Brain (*JD*)

Big Fun (*Ram, Kurt, Veronica, Heathers, Students*)

Dead Girl Walking (*Veronica, JD*)

The Me Inside of Me (*Veronica, Heather Chandler, Ms. Fleming, Company*)

You're Welcome (*Ram, Kurt, Veronica*)

Never Shut Up Again (*Heather Duke, Ram, Kurt, Students*)

Our Love is God (*JD, Veronica*)



ACT II

My Dead Gay Son (*Ram's Dad, Kurt's Dad, Students*)

Seventeen (*Veronica, JD*)

Shine a Light (*Ms. Fleming, Students*)

Lifeboat (*Heather McNamara*)

Shine a Light Reprise (*Heather Duke, Students*)

I Say No (*Veronica*)

Hey Yo Westerberg (*Students*)

Kindergarten Boyfriend (*Martha*)

Yo Girl/Meant to Be Yours (*JD, Students*)

Dead Girl Walking Reprise (*Veronica, JD, Students*)

I Am Damaged (*Veronica, JD*)

Finale Seventeen Reprise (*Veronica, Martha, Students*)

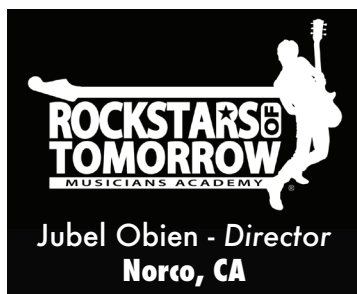
Big **THANK YOU** *to our* **SPONSERS**



12411 Limonite Ave.
Eastvale, CA 91752



8329 Pine Ave. Ste. 150
Chino, CA 91708



515 N. Main St.
Lake Elsinore, CA 92530



boba break
TEA HOUSE

2200 Hamner Ave. Ste. 102
Norco, CA 92860

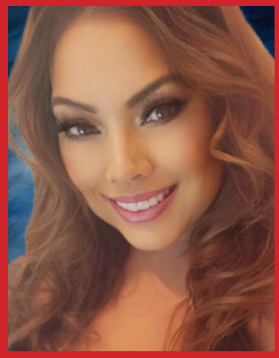
September 19th - 21th



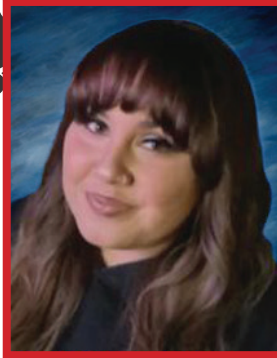
YOU'RE A GOOD MAN
CHARLIE BROWN

The Box Theater
Riverside

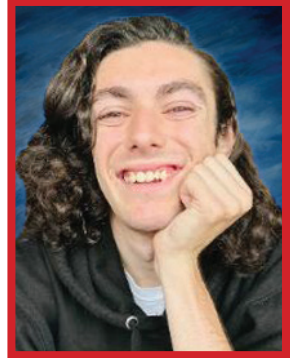
PRODUCTION



Kimberli Boynton
Director



Briana Gonzales-Diaz
Asst. Director/Choreographer



Joseph Catalano
Asst. Choreographer



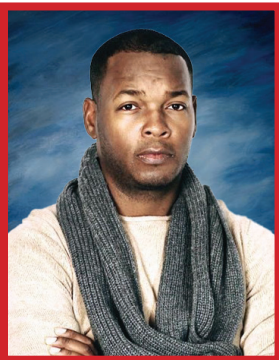
Mercedes Romero
Stage Manager



Mark Peterson
Music Director



Kaitlyn Conner
Casting Director



Gary Devon Dotson
Film Tech (NVE Entertainment)



Anthony Simmons
Videographer



OJ Wilson
Light Technician

CREW

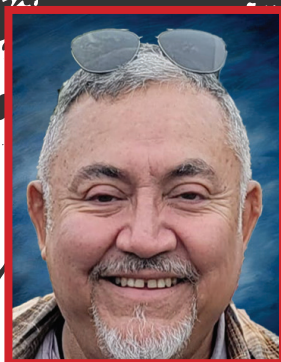
*GO
Pottweilers!*



Ashley Eddy
Dance Captain



Mike Saffel
Set Design/Stage Props



Ernesto Avila
Set Design/Stage Props



John Chickenzie
Set Design/Stage Props



James Aguilera
Set Design/Stage Props



Heriberto Noriega
Sound Technician



Kaylee Mertes
Sound Technician



Kristy Avila
Front House



Rachel Weber
Front House



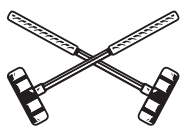
CUSTOM APPAREL PRINTING & FULFILLMENT

www.theapparelplug.com

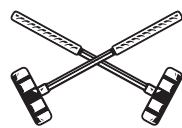


IG: [the.apparel.plug](https://www.instagram.com/the.apparel.plug)





Special



THANK YOU

**This production was possible
because of these special people:**

- PPAA Parents
- PAA Board of Directors/Members
- All of our sponsors & donors
- The Saffel Family
- Corona Historic Civic Center & staff
- JCSD Parks & Recreation Staff
- The Aguilera Family
- The Avila Family
- The Pattanaik Family
- The Phan Family
- The Lozano Family
- The Lazarito Family
- The Schantz Family
- Christine Sato
- Anthony Simmons
- Hit Print
- All Polaris Staff/Cast/Crew
- Our audience & supporters





hitprint

Service | Quality | Sustainability

hitprint Printing Services

Turn Your Ideas into Reality with HitPrint

Why Choose Us?

- ✓ Timely Delivery
- ✓ Expert Guidance
- ✓ Versatility Unlimited
- ✓ Precision Perfection

Contact Us!

☎ 951-609-2555
✉ info@ihitprint.com
🌐 www.ihitprint.com





988 is confidential, and available 24/7, to connect those experiencing a mental health, substance use, or suicidal crisis with trained crisis counselors.

Access is available through every landline, cell phone, and voice-over internet device in the U.S.

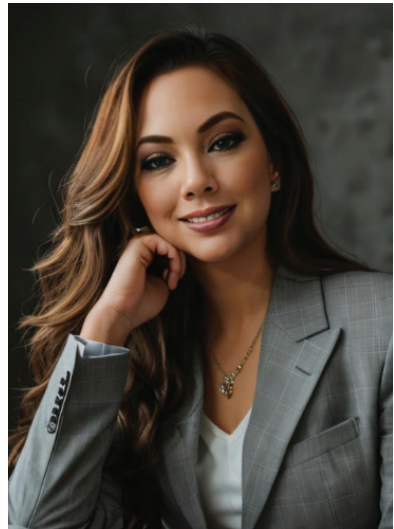
Available in Spanish and interpreters in 150 different languages.

Call or text 988 to reach the 988 Lifeline
988Lifeline.org



951-291-7566 (ext. 506)
kymberli@serenitywellnesscenter.net

Please visit us at:
www.serenitywellnesscenter.net
www.kymberliboynton.com



Dr. Kymberli Boynton
Psy.D/LMFT/Ma.Edu

You Are **NOT** Alone. Your Life **MATTERS**.

If you are struggling with thoughts of hurting yourself, suicidal ideation, or have experienced trauma - please know there is hope and help is available.

Pain doesn't have to be carried alone. We **HEAR** you, we are **HERE** to listen, support and walk with you toward healing.

Speaking up is a sign of **STRENGTH**,
not weakness.

LOCAL RESOURCES AVAILABLE

Riverside County Local Mental Health Resources
Riverside County Mental Health CARES Line (24/7 Access)

800-706-7500

Support for mental health crises, referrals & urgent needs.

Riverside University Health System - Behavioral Health (RUHS-BH)

951-955-7270 • www.rcdmh.org

Offers therapy, crisis response, substance use treatment & more.

Emergency Psychiatric Help

Riverside County Crisis Stabilization Units (CSUs)

24-hour facilities for urgent care in Riverside, Palm Springs, Indio & Perris.

Immediate Support & Resources

National Suicide & Crisis Lifeline (24/7, Free, Confidential)

Call or Text: 988 • www.988lifeline.org

Support for Youth & Teens

Teen Line (Text or Call for Youth by Trained Teens & Adults)

Call: 800-TLC-TEEN (852-8336)

Text: TEEN to 839863

Available daily 6 PM-10 PM PST

www.teenline.org

Additional Resources

Trevor Project (LGBTQ+ Support, 24/7)

Call/Text: 866-488-7386 or Text: START to 678-678

Veterans Crisis Line (24/7): **988 then Press 1**

NAMI Western Riverside County

951-369-1913 • www.namiwesternriverside.org

Support groups and mental health education.

Autographs





*Thank you for
watching and
enjoy the show!*



*Polaris Performing
Arts Academy*

Polaris Performing Arts Academy

Follow us on:



www.polarisarts.net