

Compact Digital Conference System



HCS-3900 Series Compact Digital Conference System

HCS-3938 Series Conference Units	2
HCS-3938C_D Compact Digital Conference System Chairman Unit (tabletop, charcoal gray panel + black base, charcoal gray button, stem microphone to be ordered separately).....	2
HCS-3938D_D Compact Digital Conference System Delegate Unit (tabletop, charcoal gray panel + black base, charcoal gray button, stem microphone to be ordered separately).....	4
HCS-3940 Series Conference Units	6
HCS-3940C Compact Digital Conference System Chairman Unit (stem microphone to be ordered separately).....	6
HCS-3940D Compact Digital Conference System Delegate Unit (stem microphone to be ordered separately).....	8
HCS-3900M/20 Series Compact Digital Conference System Main Units	9
HCS-3900MA/20 Compact Digital Conference System Main Unit (discussion, recording, 256x64 OLED, 6P sockets).....	9
HCS-3900MB/20 Compact Digital Conference System Main Unit (discussion, 256x64 OLED, 6P sockets).....	11
Stem microphone	M.1

HCS-3938C Chairman Unit



Features

- Stylish and ergonomic design
- Smaller, compact and practical, convenient for transportation
- Connection cable is routed from the bottom through the hole in the table for a tidy desktop
- Fully digital audio technology
- Hi-Fi loudspeaker
- Priority key and Next key
- Excellent immunity to RF interference from mobile phones
- Supporting “PnP” (plug and play)

The stylish and ergonomically designed chairman unit has all the necessary facilities to enable the user to chair a conference. It has excellent immunity to RF interference from mobile phones. Similar in appearance to HCS-3938D Delegate Unit, the HCS-3938C Chairman Unit includes a microphone priority button. When pressed, the priority button causes all currently active delegate microphones to be switched off temporarily or permanently, allowing the chairman to take control of the meeting. The loudspeaker offers superior acoustics with minimal feedback for enhanced intelligibility.

Functions

- Compliant to ISO22259
- Gain of each microphone adjustable separately, fitting the individual orator's voice to achieve perfect speech pickup any time
- Integrated high-pass filter (low-cut switch) to cut low frequency elements from the audio when needed
- Excellent immunity to RF interference from mobile phones and comparable devices
- Equipped with 5PIN microphone socket, stem microphone to be ordered separately, MS**E type stem microphone is suitable
- Stem microphone can be unplugged during adjournment, easy to maintain
- Hi-Fi loudspeaker, minimal feedback, mutes automatically when microphone is active
- Microphone On/Off button
- Every conference unit is assigned an individual serial number, and its ID can be assigned automatically or manually through conference system
- System when operated in stand-alone mode can implement the following facilities:
 - ◆ “ACTIVE MICS”, set the number of delegates permitted to speak at the same time
 - ◆ “OPEN” mode, microphone key with request-to-speak registration (AUTO)
 - ◆ “OVERRIDE” mode, microphone key control with override of the active microphones (FIFO)
 - ◆ “VOICE” mode, microphone activation on speaking
 - ◆ “APPLY” mode, delegate applies to speak by pressing apply key, delegate can speak only when operator or chairman approved his application
 - ◆ “PTT” mode, press microphone On/Off button to talk
- Automatic video tracking, when cooperating with camera and video switcher unit
- Activation at any time (if the amount of active microphones in the system is less than 6, except “VOICE” mode)
- Priority key can switch off or mute the speaking units according to preset
- Approves/denies all delegates' speaking requests
- System supports up to 100 chairman units, while only one chairman unit has the control facilities listed above (set by main unit)

Controls and Indicators

- Headphone volume up and down buttons
- Microphone On/Off button with indicator
- Priority key with indicator
- Next key with indicator

Interconnections

- Socket for pluggable stem microphone
- Ø 3.5 mm stereo headphone jack
- 1.5 m cable with 6P-DIN plug
- 0.6 m cable with 6P-DIN socket

Technical Specifications
Electrical

Max. consumption.....2 W

Headphone connection

Frequency response.....40 Hz to 16 kHz

Earphone load impedance.....≥16 Ohm

Earphone output.....10 mW

Interface data

Connector.....Ø 3.5 mm stereo jack for headphone

Mechanical

Mounting.....Tabletop

Dimensions (h x w x d) (w/o stem microphone) ...71×124×138 mm

Weight (incl. stem microphone).....0.9 kg

Color.....Charcoal gray (PANTONE Cool Gray 11 C) panel

+ black (PANTONE 419 C) base

.....Champagne (PANTONE 401 C) panel

+ black (PANTONE 419 C) base

Ordering Information

HCS-3938C_D.....Compact Digital Conference System
Chairman Unit (tabletop, charcoal gray
panel + black base, charcoal gray
button, stem microphone to be ordered
separately)

HCS-3938D Delegate Unit



Features

- Stylish and ergonomic design
- Smaller, compact and practical, convenient for transportation
- Connection cable is routed from the bottom through the hole in the table for a tidy desktop
- Fully digital audio technology
- Hi-Fi loudspeaker
- Excellent immunity to RF interference from mobile phones
- Supporting “PnP” (plug and play)

The delegate unit meets the basic demands of the conferences. It provides facilities for speaking, registering a request-to-speak and listening. It has excellent immunity to RF interference from mobile phones. The loudspeaker offers superior acoustics with minimal feedback for enhanced intelligibility.

Functions

- Compliant to ISO 22259
- Gain of each microphone adjustable separately, fitting the individual orator's voice to achieve perfect speech pickup any time
- Integrated high-pass filter (low-cut switch) to cut low frequency elements from the audio when needed
- Excellent immunity to RF interference from mobile phones and comparable devices
- Equipped with 5PIN microphone socket, stem microphone to be ordered separately, MS**E type stem microphone is suitable
- Stem microphone can be unplugged during adjournment, easy to maintain
- Hi-Fi loudspeaker, minimal feedback, mutes automatically when microphone is active
- Microphone On/Off button
- Every conference unit is assigned an individual serial number, and its ID can be assigned automatically or manually through conference system
- System when operated in stand-alone mode can implement the following facilities:
 - ◆ “ACTIVE MICS”, set the number of delegates permitted to speak at the same time
 - ◆ “OPEN” mode, microphone key with request-to-speak registration (AUTO)
 - ◆ “OVERRIDE” mode, microphone key control with override of the active microphones (FIFO)
 - ◆ “VOICE” mode, microphone activation on speaking
 - ◆ “APPLY” mode, delegate applies to speak by pressing apply key, delegate can speak only when operator or chairman approved his application
 - ◆ “PTT” mode, press microphone On/Off button to talk
- Automatic video tracking, when cooperating with camera and video switcher unit
- Set any delegate unit to be VIP unit
 - ◆ Up to 32 units can be set as VIP in one system via application software
 - ◆ VIP unit can be activated as long as the total of active microphones is not beyond 6 (incl. chairman/delegate/VIP unit, except “VOICE” mode)

Controls and Indicators

- Headphone volume up and down buttons
- Microphone On/Off button with indicator

Interconnections

- Socket for pluggable stem microphone
- Ø 3.5 mm stereo headphone jack
- 1.5 m cable with 6P-DIN plug
- 0.6 m cable with 6P-DIN socket

Technical Specifications
Electrical

Max. consumption.....2 W

Headphone connection

Frequency response.....40 Hz to 16 kHz

Earphone load impedance.....≥16 Ohm

Earphone output.....10 mW

Interface data

Connector.....Ø 3.5 mm stereo jack for headphone

Mechanical

Mounting.....Tabletop

Dimensions (h x w x d).....71x124x138 mm

Weight.....0.9 kg

Color.....Charcoal gray (PANTONE Cool Gray 11 C) panel

+ black (PANTONE 419 C) base

.....Champagne (PANTONE 401 C) panel

+ black (PANTONE 419 C) base

Ordering Information

HCS-3938D_D..... Compact Digital Conference System Delegate
Unit (tabletop, charcoal gray panel + black
base, charcoal gray button)

HCS-3940C Chairman Unit



Features

- Stylish and ergonomic design
- Smaller, compact and practical, convenient for transportation
- Connection cable is routed from the bottom through the hole in the table for a tidy desktop
- Fully digital audio technology
- Hi-Fi loudspeaker
- Priority key and Next key
- Excellent immunity to RF interference from mobile phones
- Supporting “PnP” (plug and play)

The stylish and ergonomically designed chairman unit has all the necessary facilities to enable the user to chair a conference. It has excellent immunity to RF interference from mobile phones. Similar in appearance to HCS-3940D Delegate Unit, the HCS-3940C Chairman Unit includes a microphone priority button. When pressed, the priority button causes all currently active delegate microphones to be switched off temporarily or permanently, allowing the chairman to take control of the meeting. The loudspeaker offers superior acoustics with minimal feedback for enhanced intelligibility.

Functions

- Compliant to ISO22259
- Gain of each microphone adjustable separately, fitting the individual orator's voice to achieve perfect speech pickup any time
- Integrated high-pass filter (low-cut switch) to cut low frequency elements from the audio when needed
- Excellent immunity to RF interference from mobile phones and comparable devices
- Equipped with 5PIN microphone socket, stem microphone to be ordered separately, MS**E type stem microphone is suitable
- Stem microphone can be unplugged during adjournment, easy to maintain
- Hi-Fi loudspeaker, minimal feedback, mutes automatically when microphone is active
- Microphone On/Off button
- Every conference unit is assigned an individual serial number, and its ID can be assigned automatically or manually through conference system
- System when operated in stand-alone mode can implement the following facilities:
 - ◆ “ACTIVE MICS”, set the number of delegates permitted to speak at the same time
 - ◆ “OPEN” mode, microphone key with request-to-speak registration (AUTO)
 - ◆ “OVERRIDE” mode, microphone key control with override of the active microphones (FIFO)
 - ◆ “VOICE” mode, microphone activation on speaking
 - ◆ “APPLY” mode, delegate applies to speak by pressing apply key, delegate can speak only when operator or chairman approved his application
 - ◆ “PTT” mode, press microphone On/Off button to talk
- Automatic video tracking, when cooperating with camera and video switcher unit
- Activation at any time (if the amount of active microphones in the system is less than 6, except “VOICE” mode)
- Priority key can switch off or mute the speaking units according to preset
- Approves/denies all delegates' speaking requests
- System supports up to 6 chairman units, while only one chairman unit has the control facilities listed above (set by main unit)

Controls and Indicators

- Headphone volume up and down buttons
- Microphone On/Off button with indicator
- Priority key with indicator
- Next key with indicator

Interconnections

- Socket for pluggable stem microphone
- Ø 3.5 mm stereo headphone jack
- 1.5 m cable with 6P-DIN plug
- 0.6 m cable with 6P-DIN socket

Technical Specifications

Electrical

Max. consumption.....2 W

Headphone connection

Frequency response.....40 Hz to 16 kHz

Earphone load impedance..... ≥ 16 Ohm

Earphone output.....10 mW

Interface data

Connector..... \varnothing 3.5 mm stereo jack for headphone

Mechanical

Mounting.....Tabletop

Dimensions (h x w x d)66x99x143 mm

Weight0.9 kg

Color.....Charcoal gray (PANTONE Cool Gray 11 C) panel
+ black (PANTONE 419 C) base

Ordering Information

HCS-3940C.....Compact Digital Conference System
Chairman Unit

HCS-3940D Delegate Unit



Features

- Stylish and ergonomic design
- Smaller, compact and practical, convenient for transportation
- Connection cable is routed from the bottom through the hole in the table for a tidy desktop
- Fully digital audio technology
- Hi-Fi loudspeaker
- Excellent immunity to RF interference from mobile phones
- Supporting "PnP" (plug and play)

The delegate unit meets the basic demands of the conferences. It provides facilities for speaking, registering a request-to-speak and listening. It has excellent immunity to RF interference from mobile phones. The loudspeaker offers superior acoustics with minimal feedback for enhanced intelligibility.

Functions

- Compliant to ISO 22259
- Gain of each microphone adjustable separately, fitting the individual orator's voice to achieve perfect speech pickup any time
- Integrated high-pass filter (low-cut switch) to cut low frequency elements from the audio when needed
- Excellent immunity to RF interference from mobile phones and comparable devices
- Equipped with 5PIN microphone socket, stem microphone to be ordered separately, MS**E type stem microphone is suitable
- Stem microphone can be unplugged during adjournment, easy to maintain
- Hi-Fi loudspeaker, minimal feedback, mutes automatically when microphone is active
- Microphone On/Off button
- Every conference unit is assigned an individual serial number, and its ID can be assigned automatically or manually through conference system

- System when operated in stand-alone mode can implement the following facilities:
 - ♦ "ACTIVE MICS", set the number of delegates permitted to speak at the same time
 - ♦ "OPEN" mode, microphone key with request-to-speak registration (AUTO)
 - ♦ "OVERRIDE" mode, microphone key control with override of the active microphones (FIFO)
 - ♦ "VOICE" mode, microphone activation on speaking
 - ♦ "APPLY" mode, delegate applies to speak by pressing apply key, delegate can speak only when operator or chairman approved his application
 - ♦ "PTT" mode, press microphone On/Off button to talk
- Automatic video tracking, when cooperating with camera and video switcher unit
- Set any delegate unit to be VIP unit
 - ♦ Up to 32 units can be set as VIP in one system via application software
 - ♦ VIP unit can be activated as long as the total of active microphones is not beyond 6 (incl. chairman/delegate/VIP unit, except "VOICE" mode)

Controls and Indicators

- Headphone volume up and down buttons
- Microphone On/Off button with indicator

Interconnections

- Socket for pluggable stem microphone
- Ø 3.5 mm stereo headphone jack
- 1.5 m cable with 6P-DIN plug
- 0.6 m cable with 6P-DIN socket

Technical Specifications

Electrical

Max. consumption.....2 W

Headphone connection

Frequency response.....40 Hz to 16 kHz

Earphone load impedance.....≥16 Ohm

Earphone output.....10 mW

Interface data

Connector.....Ø 3.5 mm stereo jack for headphone

Mechanical

Mounting.....Tabletop

Dimensions (h x w x d)66×99×143 mm

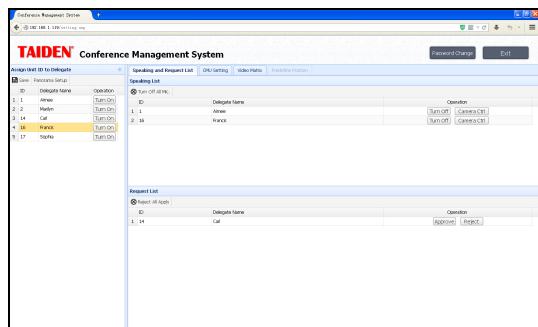
Weight0.9 kg

Color.....Charcoal gray (PANTONE Cool Gray 11 C) panel
+ black (PANTONE 419 C) base

Ordering Information

HCS-3940D.....Compact Digital Conference System
Delegate Unit

HCS-3900MA/20 Conference Main Unit



Web Control Page

Functions

- Compact and practical, designed for small and medium-sized conference rooms
- Compliant to ISO 22259
- Fully digital conference main unit, audio signals processed by high performance DSP
- Conference audio recording and playback
- With built-in monitor loudspeaker, can be directly employed in small and medium-sized meeting rooms without amplification system
- Every conference unit is assigned an individual ID for convenient setup and to avoid double ID allocation forever
- Set any delegate unit to be VIP unit, VIP unit can be activated as long as the total of active microphones is not beyond 6 (incl. chairman/delegate/VIP unit, except "VOICE" mode)
- Up to 50 contribution units can be connected
- System when operated in stand-alone mode can implement the following facilities:
 - ◆ "ACTIVE MICS", set the number of delegates permitted to speak at the same time
 - ◆ Speaking time limit can be set up (1-240 minutes)
 - ◆ "OPEN" mode, microphone key with request-to-speak registration (AUTO)
 - ◆ "OVERRIDE" mode, microphone key control with override of the active microphones (FIFO)
 - ◆ "VOICE" mode, microphone activation on speaking
 - ◆ "APPLY" mode, delegate applies to speak by pressing apply key, delegate can speak only when operator or chairman approved his application
 - ◆ "PTT" mode, press microphone On/Off button to talk

- With web page control function, the user can access the IP address of main unit from web browser to handle meeting management
- Automatic video tracking, when cooperating with camera and video switcher unit
- Built-in unit detection facilities, detect the unit's LED before the meeting

Controls and Indicators

- 256x64 OLED displays the status and the menu of system configuration
- Four buttons for configuration
- Power switch with indicator
- Line in volume control buttons
- Master volume control buttons
- Earphone volume control buttons

Interconnections

- Multiple audio in/out interfaces:
 - ◆ One balanced XLR-type connector for audio line in
 - ◆ Two symmetrical RCA input interfaces for audio line in
 - ◆ One balanced XLR-type connector for audio line out
 - ◆ Two symmetrical RCA output interfaces for audio line out
 - ◆ One USB interface and one SD card slot for conference audio recording and playback. The audio is recorded as *.aac file. The recording will switch to the other device when SD card (maximum memory: 64 G) or USB stick (maximum memory: 256 G) is full without interruption
 - ◆ One Mini USB interface realizing quality-lossless sound recording on PC and intact input of streaming audio into the system
- One RS-232 port for connection to central control system
- Video switcher interface
- 2xoutlet (6P-DIN) trunk-line cable outlets
- One USB_H interface for system upgrading
- Ethernet interface (RJ45)

Technical Specifications

Electrical

Frequency response	40 Hz to 16 kHz
SNR	≥90 dBA
Dynamic range	≥94 dB
THD	≤0.05%
Power supply	AC 100 V -240 V 50 Hz/60 Hz
Power consumption	152 W
RS-232 connection	nine-pole Sub-D female socket

Audio inputs

LINE IN 1	+18 dBu, BAL.
LINE IN 2	+18 dBu, UNBAL.

Audio outputs

LINE OUT 1	+18 dBu, BAL.
LINE OUT 2	+18 dBu, UNBAL.

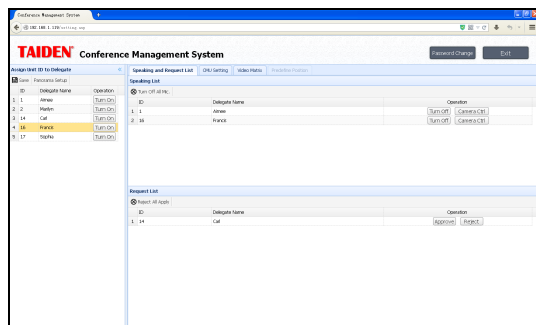
Mechanical

Mounting.....Tabletop or mounted in a 19" rack
Dimensions (h x w x d).....45 x 483 x 213 mm
Weight.....3.2 kg
Color.....Gray (PANTONE 425 C)

Ordering Information

HCS-3900MA/20.....Compact Digital Conference System
Main Unit (discussion, recording,
256x64 OLED, 6P sockets)

HCS-3900MB/20 Conference Main Unit



Web Control Page

Functions

- Compact and practical, designed for small and medium-sized conference rooms
- Compliant to ISO 22259
- Fully digital conference main unit, audio signals processed by high performance DSP
- With built-in monitor loudspeaker, can be directly employed in small and medium-sized meeting rooms without amplification system
- Every conference unit is assigned an individual ID for convenient setup and to avoid double ID allocation forever
- Set any delegate unit to be VIP unit, VIP unit can be activated as long as the total of active microphones is not beyond 6 (incl. chairman/delegate/VIP unit, except "VOICE" mode)
- Up to 50 contribution units can be connected
- System when operated in stand-alone mode can implement the following facilities:
 - ◆ "ACTIVE MICS", set the number of delegates permitted to speak at the same time
 - ◆ Speaking time limit can be set up (1-240 minutes)
 - ◆ "OPEN" mode, microphone key with request-to-speak registration (AUTO)
 - ◆ "OVERRIDE" mode, microphone key control with override of the active microphones (FIFO)
 - ◆ "VOICE" mode, microphone activation on speaking
 - ◆ "APPLY" mode, delegate applies to speak by pressing apply key, delegate can speak only when operator or chairman approved his application
 - ◆ "PTT" mode, press microphone On/Off button to talk
- With web page control function, the user can access the IP address of main unit from web browser to handle meeting management
- Automatic video tracking, when cooperating with camera and

video switcher unit

- Built-in unit detection facilities, detect the unit's LED before the meeting

Controls and Indicators

- 256x64 OLED displays the status and the menu of system configuration
- Four buttons for configuration
- Power switch with indicator
- Line in volume control buttons
- Master volume control buttons
- Earphone volume control buttons

Interconnections

- Multiple audio input/output interfaces:
 - ◆ One balanced XLR-type connector for audio line in
 - ◆ Two symmetrical RCA input interfaces for audio line in
 - ◆ One balanced XLRM-type connector for audio line out
 - ◆ Two symmetrical RCA output interfaces for audio line out
 - ◆ One Mini USB interface realizing quality-lossless sound recording on PC and intact input of streaming audio into the system
- One RS-232 port for connection to central control system
- Video switcher interface
- 2xoutlet (6P-DIN) trunk-line cable outlets
- One USB interface for system upgrading
- Ethernet interface (RJ45)

Technical Specifications

Electrical

Frequency response.....40 Hz to 16 kHz
 SNR.....≥90 dBA
 Dynamic range.....≥94 dB
 THD.....≤0.05%
 Power supply.....AC 100 V -240 V 50 Hz/60 Hz
 Power consumption.....152 W
 RS-232 connection.....nine-pole Sub-D female socket

Audio inputs

LINE IN 1.....+18 dBu, BAL.
 LINE IN 2.....+18 dBu, UNBAL.

Audio outputs

LINE OUT 1.....+18 dBu, BAL.
 LINE OUT 2.....+18 dBu, UNBAL.

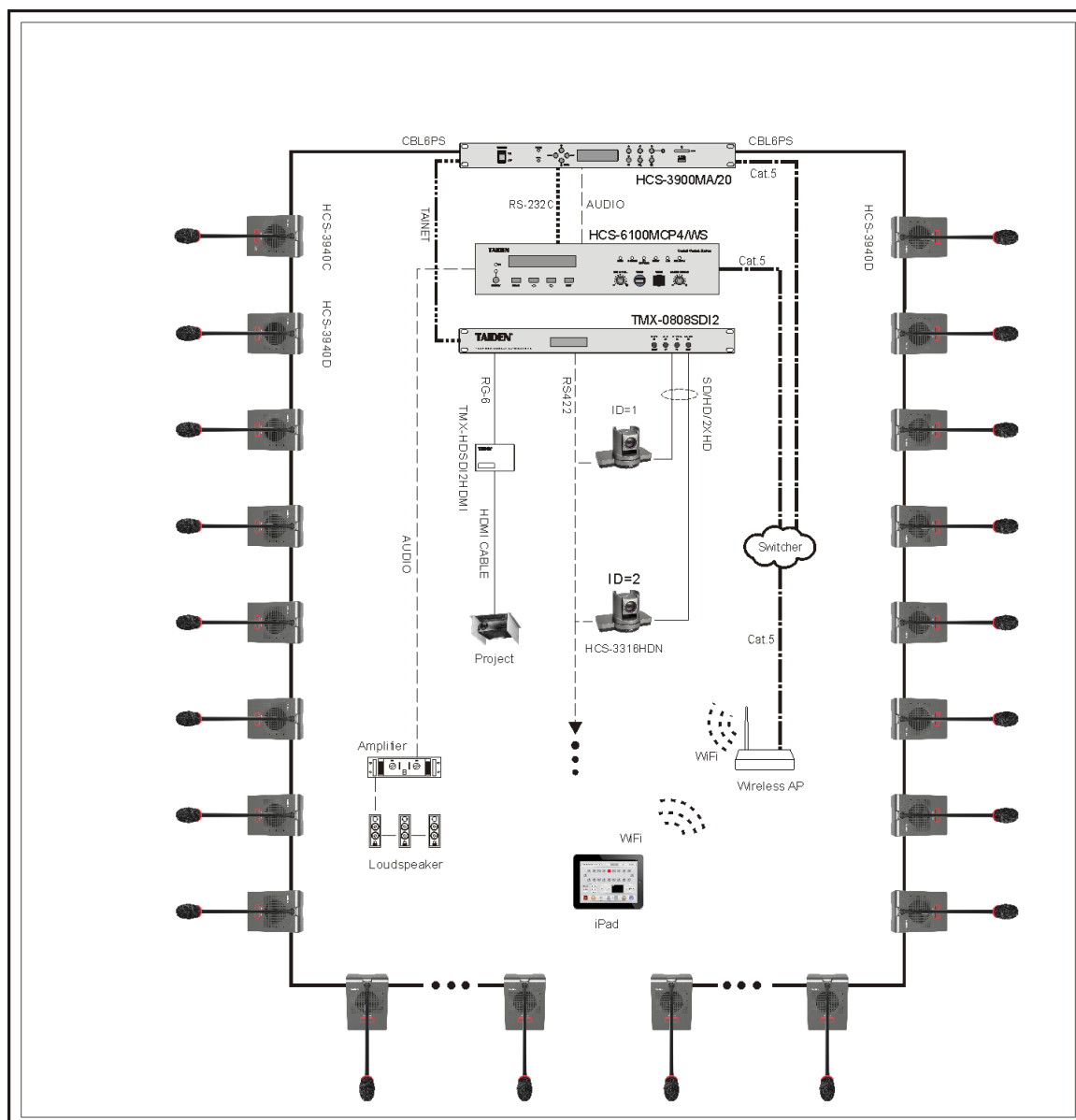
Mechanical

Mounting.....Tabletop or mounted in a 19" rack
 Dimensions (h x w x d).....45 x 483 x 213 mm
 Weight.....3.2 kg
 Color.....Gray (PANTONE 425 C)

Ordering Information

HCS-3900MB/20.....Compact Digital Conference System
 Main Unit (discussion, 256x64 OLED,
 6P sockets)

System Connection



Stem Microphone

MS33EGF1S	Stem Microphone (33 cm, semi-rigid gooseneck arm, broadcast quality microphone, with bi-color illuminated ring and lockable windshield, 5pin plug, for HCS-3900, HCS-4100, HCS-4800, HCS-5300, HCS-8300, HCS-8600 series, champagne).....	M.3
MS33EGF1B	Stem Microphone (33 cm, semi-rigid gooseneck arm, broadcast quality microphone, with bi-color illuminated ring and lockable windshield, 5pin plug, for HCS-3900, HCS-4100, HCS-4800, HCS-5300, HCS-8300, HCS-8600 series, black).....	M.3
MS41EGF1S	Stem Microphone (41 cm, semi-rigid gooseneck arm, broadcast quality microphone, with bi-color illuminated ring and lockable windshield, 5pin plug, for HCS-3900, HCS-4100, HCS-4800, HCS-5300, HCS-8300, HCS-8600 series, champagne).....	M.3
MS41EGF1B	Stem Microphone (41 cm, semi-rigid gooseneck arm, broadcast quality microphone, with bi-color illuminated ring and lockable windshield, 5pin plug, for HCS-3900, HCS-4100, HCS-4800, HCS-5300, HCS-8300, HCS-8600 series, black).....	M.3
MS47EGF1S	Stem Microphone (47 cm, semi-rigid gooseneck arm, broadcast quality microphone, with bi-color illuminated ring and lockable windshield, 5pin plug, for HCS-3900, HCS-4100, HCS-4800, HCS-5300, HCS-8300, HCS-8600 series, champagne).....	M.3
MS47EGF1B	Stem Microphone (47 cm, semi-rigid gooseneck arm, broadcast quality microphone, with bi-color illuminated ring and lockable windshield, 5pin plug, for HCS-3900, HCS-4100, HCS-4800, HCS-5300, HCS-8300, HCS-8600 series, black).....	M.3
MS33EGFSB	Stem Microphone (33 cm, fully flexible gooseneck arm, broadcast quality microphone, with bi-color illuminated ring and lockable windshield, 5pin plug, for HCS-3900, HCS-4100, HCS-4800, HCS-5300, HCS-8300, HCS-8600 series and HCS-9385 RSI interpreter unit, black).....	M.4
MS50EGF2B	Stem Microphone (50 cm, dual-flex gooseneck arm, broadcast quality microphone, with bi-color illuminated ring and lockable windshield, 5pin plug, for HCS-3900, HCS-4100, HCS-4800, HCS-5300, HCS-8300 and HCS-8600 series, black).....	M.5
MS60EGF2B	Stem Microphone (60 cm, dual-flex gooseneck arm, broadcast quality microphone, with bi-color illuminated ring and lockable windshield, 5pin plug, for HCS-3900, HCS-4100, HCS-4800, HCS-5300, HCS-8300 and HCS-8600 series, black).....	M.5
MS70EGF2B	Stem Microphone (70 cm, dual-flex gooseneck arm, broadcast quality microphone, with bi-color illuminated ring and lockable windshield, 5pin plug, for HCS-3900, HCS-4100, HCS-4800, HCS-5300, HCS-8300 and HCS-8600 series, black).....	M.5
MS33EGG1B	Stem Microphone (33 cm, semi-rigid gooseneck arm, broadcast quality microphone, with bi-color illuminated ring and lockable windshield, 5pin plug, for HCS-3900, HCS-4100, HCS-4800, HCS-5300, HCS-8300 and HCS-8600 series, black).....	M.6
MS41EGG1B	Stem Microphone (41 cm, semi-rigid gooseneck arm, broadcast quality microphone, with bi-color illuminated ring and lockable windshield, 5pin plug, for HCS-3900, HCS-4100, HCS-4800, HCS-5300, HCS-8300 and HCS-8600 series, black).....	M.6
MS47EGG1B	Stem Microphone (47 cm, semi-rigid gooseneck arm, broadcast quality microphone, with bi-color illuminated ring and lockable windshield, 5pin plug, for HCS-3900, HCS-4100, HCS-4800, HCS-5300, HCS-8300 and HCS-8600 series, black).....	M.6
MS33EHA1B	Stem Microphone (33 cm, semi-rigid gooseneck arm, broadcast quality microphone, 14 mm uni-directional electret condenser microphone, with bi-color illuminated ring and windshield, 5pin plug, for HCS-3900, HCS-4100, HCS-4800, HCS-5300, HCS-8300 and HCS-8600 series, black).....	M.7
MS41EHA1B	Stem Microphone (41 cm, semi-rigid gooseneck arm, broadcast quality microphone, 14 mm uni-directional electret condenser microphone, with bi-color illuminated ring and windshield, 5pin plug, for HCS-3900, HCS-4100, HCS-4800, HCS-5300, HCS-8300 and HCS-8600 series, black).....	M.7
MS47EHA1B	Stem Microphone (47 cm, semi-rigid gooseneck arm, broadcast quality microphone, 14 mm uni-directional electret condenser microphone, with bi-color illuminated ring and windshield, 5pin plug, for HCS-3900, HCS-4100, HCS-4800, HCS-5300, HCS-8300 and HCS-8600 series, black).....	M.7

MS33EGA1S	Stem Microphone (33 cm, semi-rigid gooseneck arm, broadcast quality microphone, with bi-color illuminated ring, built-in windshield, 5pin plug, for HCS-3900, HCS-4100, HCS-4800, HCS-5300, HCS-8300 and HCS-8600 series, silver).....	M.8
MS33EGA1B	Stem Microphone (33 cm, semi-rigid gooseneck arm, broadcast quality microphone, with bi-color illuminated ring, built-in windshield, 5pin plug, for HCS-3900, HCS-4100, HCS-4800, HCS-5300, HCS-8300 and HCS-8600 series, black).....	M.8
MS41EGA1S	Stem Microphone (41 cm, semi-rigid gooseneck arm, broadcast quality microphone, with bi-color illuminated ring, built-in windshield, 5pin plug, for HCS-3900, HCS-4100, HCS-4800, HCS-5300, HCS-8300 and HCS-8600 series, silver).....	M.8
MS41EGA1B	Stem Microphone (41 cm, semi-rigid gooseneck arm, broadcast quality microphone, with bi-color illuminated ring, built-in windshield, 5pin plug, for HCS-3900, HCS-4100, HCS-4800, HCS-5300, HCS-8300 and HCS-8600 series, black).....	M.8
MS47EGA1S	Stem Microphone (47 cm, semi-rigid gooseneck arm, broadcast quality microphone, with bi-color illuminated ring, built-in windshield, 5pin plug, for HCS-3900, HCS-4100, HCS-4800, HCS-5300, HCS-8300 and HCS-8600 series, silver).....	M.8
MS47EGA1B	Stem Microphone (47 cm, semi-rigid gooseneck arm, broadcast quality microphone, with bi-color illuminated ring, built-in windshield, 5pin plug, for HCS-3900, HCS-4100, HCS-4800, HCS-5300, HCS-8300 and HCS-8600 series, black).....	M.8
MS33EGB1S	Stem Microphone (33 cm, semi-rigid gooseneck arm, broadcast quality microphone, with bi-color illuminated ring, built-in windshield, 5pin plug, for HCS-3900, HCS-4100, HCS-4800, HCS-5300, HCS-8300 and HCS-8600 series, champagne).....	M.9
MS33EGB1B	Stem Microphone (33 cm, semi-rigid gooseneck arm, broadcast quality microphone, with bi-color illuminated ring, built-in windshield, 5pin plug, for HCS-3900, HCS-4100, HCS-4800, HCS-5300, HCS-8300 and HCS-8600 series, black).....	M.9
MS41EGB1S	Stem Microphone (41 cm, semi-rigid gooseneck arm, broadcast quality microphone, with bi-color illuminated ring, built-in windshield, 5pin plug, for HCS-3900, HCS-4100, HCS-4800, HCS-5300, HCS-8300 and HCS-8600 series, champagne).....	M.9
MS41EGB1B	Stem Microphone (41 cm, semi-rigid gooseneck arm, broadcast quality microphone, with bi-color illuminated ring, built-in windshield, 5pin plug, for HCS-3900, HCS-4100, HCS-4800, HCS-5300, HCS-8300 and HCS-8600 series, black).....	M.9
MS47EGB1S	Stem Microphone (47 cm, semi-rigid gooseneck arm, broadcast quality microphone, with bi-color illuminated ring, built-in windshield, 5pin plug, for HCS-3900, HCS-4100, HCS-4800, HCS-5300, HCS-8300 and HCS-8600 series, champagne).....	M.9
MS47EGB1B	Stem Microphone (47 cm, semi-rigid gooseneck arm, broadcast quality microphone, with bi-color illuminated ring, built-in windshield, 5pin plug, for HCS-3900, HCS-4100, HCS-4800, HCS-5300, HCS-8300 and HCS-8600 series, black).....	M.9
MS41EGE1S	Stem Microphone (41 cm, semi-rigid gooseneck arm, with bi-color illuminated ring, built-in windshield, 5pin plug, for HCS-3900, HCS-4100, HCS-4800, HCS-5300, HCS-8300 and HCS-8600 series, champagne).....	M.10

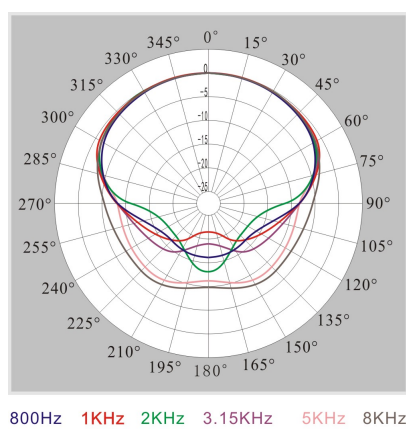
MSxxEGF1 Stem Microphone



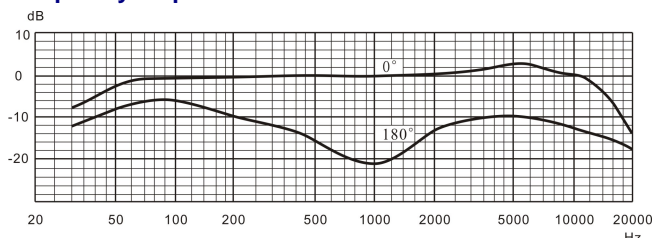
Features

- With semi-rigid gooseneck arm, 5pin plug
- Broadcast quality microphone
- With bi-color illuminated ring (green/red)
- With lockable windshield
- For HCS-3900, HCS-4100, HCS-4800, HCS-5300, HCS-8300, HCS-8600 congress unit

Polar pattern



Frequency response



Technical Specifications

Electrical

Transducer.....Electret-condenser
 Polar pattern.....Uni-directional
 Operating voltage.....5 VDC
 Sensitivity.....-46 dB at 680 Ohm (0 dB = 1 V/Pa at 1 kHz)
 Frequency response.....50 Hz to 20 kHz
 Directivity 0°/180°.....≥ 20 dB (1 kHz)
 Equivalent noise.....20 dBA (SPL)
 Maximum sound pressure level.....125 dB (THD<3%)

Mechanical

Length.....33 cm, 41 cm, 47 cm
 Weight.....81 g, 86 g, 94 g
 Color....Champagne (PANTONE 427 C) / Black (PANTONE 419 C)

Ordering Information

MS33EGF1S.....Stem Microphone (33 cm, semi-rigid gooseneck arm, broadcast quality microphone, with bi-color illuminated ring and lockable windshield, 5pin plug, for HCS-3900, HCS-4100, HCS-4800, HCS-5300, HCS-8300 and HCS-8600 series, champagne)

MS33EGF1B.....Stem Microphone (33 cm, semi-rigid gooseneck arm, broadcast quality microphone, with bi-color illuminated ring and lockable windshield, 5pin plug, for HCS-3900, HCS-4100, HCS-4800, HCS-5300, HCS-8300 and HCS-8600 series, black)

MS41EGF1S.....Stem Microphone (41 cm, semi-rigid gooseneck arm, broadcast quality microphone, with bi-color illuminated ring and lockable windshield, 5pin plug, for HCS-3900, HCS-4100, HCS-4800, HCS-5300, HCS-8300 and HCS-8600 series, champagne)

MS41EGF1B.....Stem Microphone (41 cm, semi-rigid gooseneck arm, broadcast quality microphone, with bi-color illuminated ring and lockable windshield, 5pin plug, for HCS-3900, HCS-4100, HCS-4800, HCS-5300, HCS-8300 and HCS-8600 series, black)

MS47EGF1S.....Stem Microphone (47 cm, semi-rigid gooseneck arm, broadcast quality microphone, with bi-color illuminated ring and lockable windshield, 5pin plug, for HCS-3900, HCS-4100, HCS-4800, HCS-5300, HCS-8300 and HCS-8600 series, champagne)

MS47EGF1B.....Stem Microphone (47 cm, semi-rigid gooseneck arm, broadcast quality microphone, with bi-color illuminated ring and lockable windshield, 5pin plug, for HCS-3900, HCS-4100, HCS-4800, HCS-5300, HCS-8300 and HCS-8600 series, black)

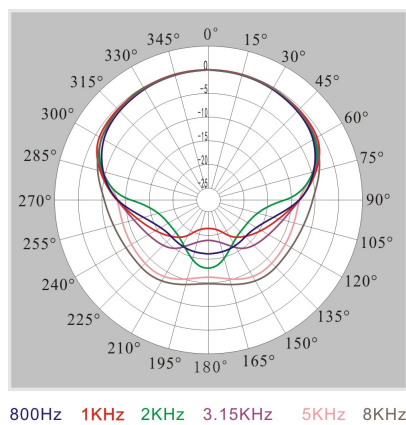
MS33EGFSB Stem Microphone



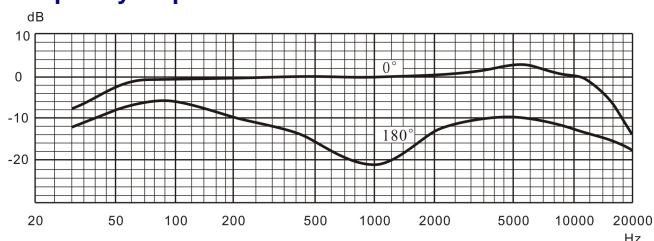
Features

- With fully flexible gooseneck arm, 5pin plug
- Broadcast quality microphone
- With bi-color illuminated ring (green/red)
- With lockable windshield
- MS33EGFSB: for HCS-3900, HCS-4100, HCS-4800, HCS-5300, HCS-8300 and HCS-8600 congress unit; for HCS-9385 RSI interpreter unit

Polar pattern



Frequency response



Technical Specifications

Electrical

Transducer.....Electret-condenser
Polar pattern.....Uni-directional
Operating voltage.....5 VDC
Sensitivity.....-46 dB at 680 Ohm (0 dB = 1 V/Pa at 1 kHz)
Frequency response.....50 Hz to 20 kHz
Directivity 0°/180°.....≥ 20 dB (1 kHz)
Equivalent noise.....20 dBA (SPL)
Maximum sound pressure level.....125 dB (THD<3%)

Mechanical

Length.....33 cm
Color.....Black (PANTONE 419 C)

Ordering Information

MS33EGFSB.....Stem Microphone (33 cm, fully flexible gooseneck arm, broadcast quality microphone, with bi-color illuminated ring and lockable windshield, 5pin plug, for HCS-3900, HCS-4100, HCS-4800, HCS-5300, HCS-8300, HCS-8600 series and HCS-9385 RSI interpreter unit, black)

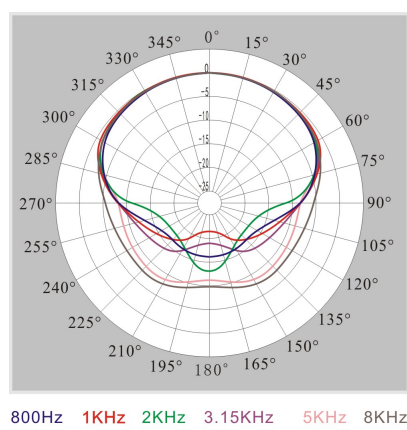
MSxxEGF2B Stem Microphone



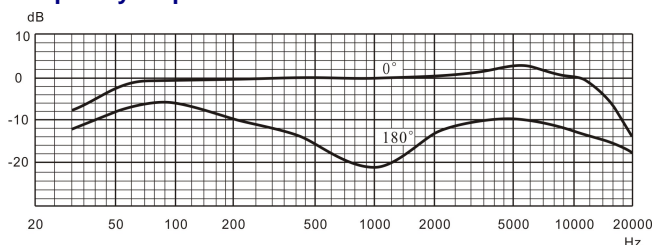
Features

- With dual-flex gooseneck arm, 5pin plug
- Broadcast quality microphone
- With bi-color illuminated ring (green/red)
- With lockable windshield
- For HCS-3900, HCS-4100, HCS-4800, HCS-5300, HCS-8300 and HCS-8600 congress unit

Polar pattern



Frequency response



Technical Specifications

Electrical

Transducer.....Electret-condenser
 Polar pattern.....Uni-directional
 Operating voltage.....5 VDC
 Sensitivity.....-46 dB at 680 Ohm (0 dB = 1 V/Pa at 1 kHz)
 Frequency response.....50 Hz to 20 kHz
 Directivity 0°/180°.....≥20 dB (1 kHz)
 Equivalent noise.....20 dBA (SPL)
 Maximum sound pressure level.....125 dB (THD<3%)

Mechanical

Length.....50 cm, 60 cm, 70 cm
 Color.....Black (PANTONE 419 C)

Ordering Information

MS50EGF2B.....Stem Microphone (50 cm, dual-flex gooseneck arm, broadcast quality microphone, with bi-color illuminated ring and lockable windshield, 5pin plug, for HCS-3900, HCS-4100, HCS-4800, HCS-5300, HCS-8300, and HCS-8600 series, black)

MS60EGF2B.....Stem Microphone (60 cm, dual-flex gooseneck arm, broadcast quality microphone, with bi-color illuminated ring and lockable windshield, 5pin plug, for HCS-3900, HCS-4100, HCS-4800, HCS-5300, HCS-8300 and HCS-8600 series, black)

MS70EGF2B.....Stem Microphone (70 cm, dual-flex gooseneck arm, broadcast quality microphone, with bi-color illuminated ring and lockable windshield, 5pin plug, for HCS-3900, HCS-4100, HCS-4800, HCS-5300, HCS-8300 and HCS-8600 series, black)

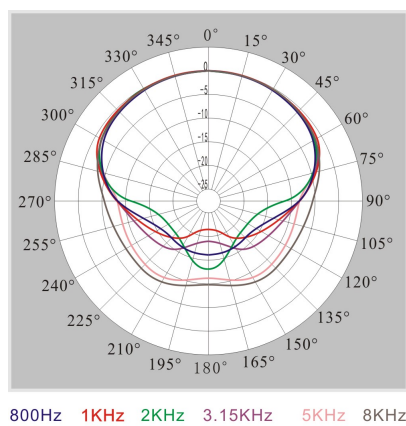
MSxxEGG1B Stem Microphone



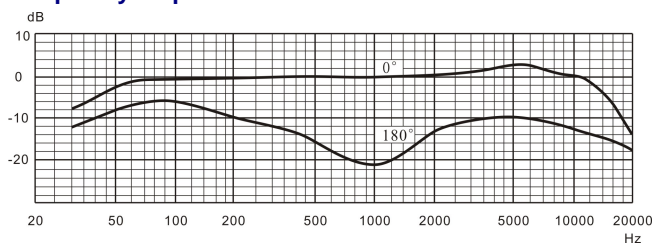
Features

- With semi-rigid gooseneck arm, 5pin plug
- Broadcast quality microphone
- With bi-color illuminated ring (green/red)
- With lockable windshield
- For HCS-3900, HCS-4100, HCS-4800, HCS-5300, HCS-8300, and HCS-8600 congress unit

Polar pattern



Frequency response



Technical Specifications

Electrical

Transducer.....Electret-condenser
 Polar pattern.....Uni-directional
 Operating voltage.....5 VDC
 Sensitivity.....-46 dB at 680 Ohm (0 dB = 1 V/Pa at 1 kHz)
 Frequency response.....50 Hz to 20 kHz
 Directivity 0°/180°.....≥20 dB (1 kHz)
 Equivalent noise.....20 dBA (SPL)
 Maximum sound pressure level.....125 dB (THD<3%)

Mechanical

Length.....33 cm, 41 cm, 47 cm
 Weight.....81 g, 86 g, 94 g
 Color.....Black (PANTONE 419 C)

Ordering Information

MS33EGG1B.....Stem Microphone (33 cm, semi-rigid gooseneck arm, broadcast quality microphone, with bi-color illuminated ring and lockable windshield, 5pin plug, for HCS-3900, HCS-4100, HCS-4800, HCS-5300, HCS-8300 and HCS-8600 series, black)

MS41EGG1B.....Stem Microphone (41 cm, semi-rigid gooseneck arm, broadcast quality microphone, with bi-color illuminated ring and lockable windshield, 5pin plug, for HCS-3900, HCS-4100, HCS-4800, HCS-5300, HCS-8300 and HCS-8600 series, black)

MS47EGG1B.....Stem Microphone (47 cm, semi-rigid gooseneck arm, broadcast quality microphone, with bi-color illuminated ring and lockable windshield, 5pin plug, for HCS-3900, HCS-4100, HCS-4800, HCS-5300, HCS-8300 and HCS-8600 series, black)

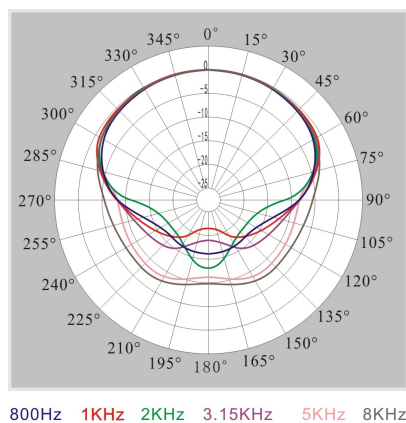
MSxxEHA1B Stem Microphone



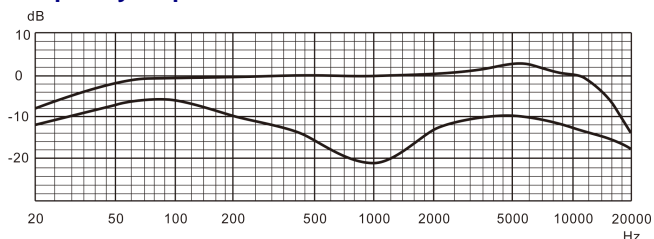
Features

- With semi-rigid gooseneck arm, 5pin plug
- Broadcast quality microphone
- 14 mm uni-directional electret condenser microphone
- With bi-color illuminated ring (green/red)
- With windshield
- For HCS-3900, HCS-4100, HCS-4800, HCS-5300, HCS-8300 and HCS-8600 series congress unit

Polar pattern



Frequency response



Technical Specifications

Electrical

Transducer.....Electret-condenser
 Polar pattern.....Uni-directional
 Operating voltage.....5 VDC
 Sensitivity.....-37 dB at 680 Ohm (0 dB = 1 V/Pa at 1 kHz)
 Frequency response.....20 Hz to 20 kHz
 Directivity 0°/180°.....≥ 20 dB (1 kHz)
 Equivalent noise.....20 dBA (SPL)
 Maximum sound pressure level.....139 dB (THD<3%)

Mechanical

Length.....33 cm, 41 cm, 47 cm
 Weight.....110 g, 117 g, 124 g
 Color.....Black (PANTONE 419 C)

Ordering Information

MS33EHA1B.....Stem Microphone (33 cm, semi-rigid gooseneck arm, broadcast quality microphone, 14 mm uni-directional electret condenser microphone, with bi-color illuminated ring and windshield, 5pin plug, for HCS-3900, HCS-4100, HCS-4800, HCS-5300, HCS-8300 and HCS-8600 series, black)

MS41EHA1B.....Stem Microphone (41 cm, semi-rigid gooseneck arm, broadcast quality microphone, 14 mm uni-directional electret condenser microphone, with bi-color illuminated ring and windshield, 5pin plug, for HCS-3900, HCS-4100, HCS-4800, HCS-5300, HCS-8300 and HCS-8600 series, black)

MS47EHA1B.....Stem Microphone (47 cm, semi-rigid gooseneck arm, broadcast quality microphone, 14 mm uni-directional electret condenser microphone, with bi-color illuminated ring and windshield, 5pin plug, for HCS-3900, HCS-4100, HCS-4800, HCS-5300, HCS-8300 and HCS-8600 series, black)

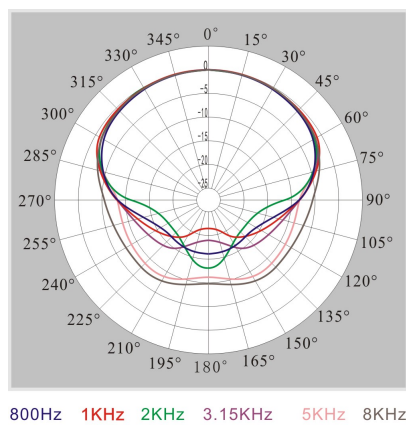
MSxxEGA1 Stem Microphone



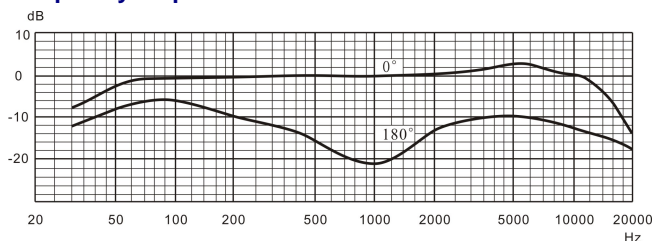
Features

- With semi-rigid gooseneck arm, 5pin plug
- Broadcast quality microphone
- With bi-color illuminated ring (green/red)
- Build-in windshield
- For HCS-3900, HCS-4100, HCS-4800, HCS-5300, HCS-8300 and HCS-8600 series congress unit

Polar pattern



Frequency response



Technical Specifications

Electrical

Transducer.....Electret-condenser
 Polar pattern.....Uni-directional
 Operating voltage.....5 VDC
 Sensitivity.....-46 dB at 680 Ohm (0 dB = 1 V/Pa at 1 kHz)
 Frequency response.....50 Hz to 20 kHz
 Directivity 0°/180°.....≥20 dB (1 kHz)
 Equivalent noise.....20 dBA (SPL)
 Maximum sound pressure level.....125 dB (THD<3%)

Mechanical

Length.....33 cm, 41 cm, 47 cm
 Weight.....88 g, 95 g, 100 g
 Color.....Silver (PANTONE 401 C) / Black (PANTONE 419 C)

Ordering Information

MS33EGA1S..... Stem Microphone (33 cm, semi-rigid gooseneck arm, broadcast quality microphone, with bi-color illuminated ring, built-in windshield, 5pin plug, for HCS-3900, HCS-4100, HCS-4800, HCS-5300, HCS-8300 and HCS-8600 series, silver)

MS33EGA1B..... Stem Microphone (33 cm, semi-rigid gooseneck arm, broadcast quality microphone, with bi-color illuminated ring, built-in windshield, 5pin plug, for HCS-3900, HCS-4100, HCS-4800, HCS-5300, HCS-8300 and HCS-8600 series, black)

MS41EGA1S..... Stem Microphone (41 cm, semi-rigid gooseneck arm, broadcast quality microphone, with bi-color illuminated ring, built-in windshield, 5pin plug, for HCS-3900, HCS-4100, HCS-4800, HCS-5300, HCS-8300 and HCS-8600 series, silver)

MS41EGA1B..... Stem Microphone (41 cm, semi-rigid gooseneck arm, broadcast quality microphone, with bi-color illuminated ring, built-in windshield, 5pin plug, for HCS-3900, HCS-4100, HCS-4800, HCS-5300, HCS-8300 and HCS-8600 series, black)

MS47EGA1S..... Stem Microphone (47 cm, semi-rigid gooseneck arm, broadcast quality microphone, with bi-color illuminated ring, built-in windshield, 5pin plug, for HCS-3900, HCS-4100, HCS-4800, HCS-5300, HCS-8300 and HCS-8600 series, silver)

MS47EGA1B..... Stem Microphone (47 cm, semi-rigid gooseneck arm, broadcast quality microphone, with bi-color illuminated ring, built-in windshield, 5pin plug, for HCS-3900, HCS-4100, HCS-4800, HCS-5300, HCS-8300 and HCS-8600 series, black)

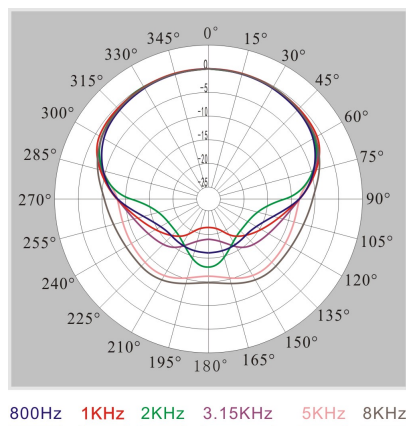
MSxxEGB1 Stem Microphone



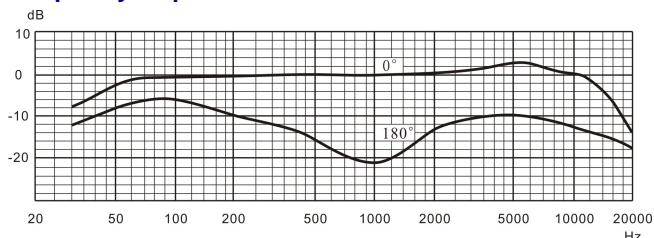
Features

- With semi-rigid gooseneck arm, 5pin plug
- Broadcast quality microphone
- With bi-color illuminated ring (green/red)
- Built-in windshield
- For HCS-3900, HCS-4100, HCS-4800, HCS-5300, HCS-8300 and HCS-8600 congress unit

Polar pattern



Frequency response



Technical Specifications

Electrical

Transducer.....Electret-condenser
 Polar pattern.....Uni-directional
 Operating voltage.....5 VDC
 Sensitivity.....-46 dB at 680 Ohm (0 dB = 1 V/Pa at 1 kHz)
 Frequency response.....50 Hz to 20 kHz
 Directivity 0°/180°.....≥20 dB (1 kHz)
 Equivalent noise.....20 dBA (SPL)
 Maximum sound pressure level.....125 dB (THD<3%)

Mechanical

Length.....33 cm, 41 cm, 47 cm
 Weight.....90 g, 97 g, 102 g
 Color.....Champagne (PANTONE 427 C) / Black (PANTONE 419 C)

Ordering Information

- MS33EGB1S..... Stem Microphone (33 cm, semi-rigid gooseneck arm, broadcast quality microphone, with bi-color illuminated ring, built-in windshield, 5pin plug, for HCS-3900, HCS-4100, HCS-4800, HCS-5300, HCS-8300 and HCS-8600 series, champagne)
- MS33EGB1B..... Stem Microphone (33 cm, semi-rigid gooseneck arm, broadcast quality microphone, with bi-color illuminated ring, built-in windshield, 5pin plug, for HCS-3900, HCS-4100, HCS-4800, HCS-5300, HCS-8300 and HCS-8600 series, black)
- MS41EGB1S..... Stem Microphone (41 cm, semi-rigid gooseneck arm, broadcast quality microphone, with bi-color illuminated ring, built-in windshield, 5pin plug, for HCS-3900, HCS-4100, HCS-4800, HCS-5300, HCS-8300 and HCS-8600 series, champagne)
- MS41EGB1B..... Stem Microphone (41 cm, semi-rigid gooseneck arm, broadcast quality microphone, with bi-color illuminated ring, built-in windshield, 5pin plug, for HCS-3900, HCS-4100, HCS-4800, HCS-5300, HCS-8300 and HCS-8600 series, black)
- MS47EGB1S..... Stem Microphone (47 cm, semi-rigid gooseneck arm, broadcast quality microphone, with bi-color illuminated ring, built-in windshield, 5pin plug, for HCS-3900, HCS-4100, HCS-4800, HCS-5300, HCS-8300 and HCS-8600 series, champagne)
- MS47EGB1B..... Stem Microphone (47 cm, semi-rigid gooseneck arm, broadcast quality microphone, with bi-color illuminated ring, built-in windshield, 5pin plug, for HCS-3900, HCS-4100, HCS-4800, HCS-5300, HCS-8300 and HCS-8600 series, black)

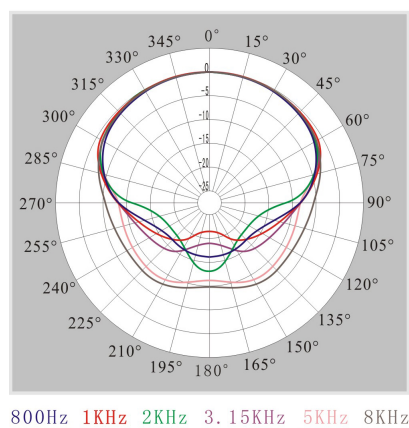
MS41EGE1S Stem Microphone



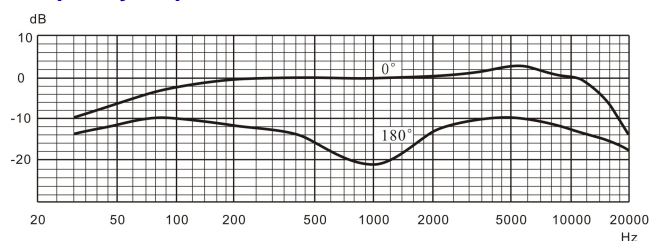
Features

- With semi-rigid gooseneck arm, 5pin plug
- Broadcast quality microphone
- With bi-color illuminated ring (green/red)
- Built-in windshield
- For HCS-3900, HCS-4100, HCS-4800, HCS-5300, HCS-8300, and HCS-8600 series congress unit

Polar pattern



Frequency response



Technical Specifications

Electrical

Transducer.....Electret-condenser
Polar pattern.....Uni-directional
Operating voltage.....5 VDC
Sensitivity.....-46 dBA at 680 Ohm (0 dB = 1 V/Pa at 1 kHz)
Frequency response.....50 Hz to 20 kHz
Directivity 0°/180°.....≥20 dB (1 kHz)
Equivalent noise.....20 dBA (SPL)
Maximum sound pressure level.....125 dB (THD<3%)

Mechanical

Length.....41 cm
Weight.....95 g
Color.....Champagne (PANTONE 427 C)

Ordering Information

MS41EGE1S.....Stem Microphone (41 cm, semi-rigid gooseneck arm, with bi-color illuminated ring, built-in windshield, 5pin plug, for HCS-3900, HCS-4100, HCS-4800, HCS-5300, HCS-8300 and HCS-8600 series, champagne)