

Gen5 LED Area Light

Serie FAL05



UP TO
500W



(514) 627-4489

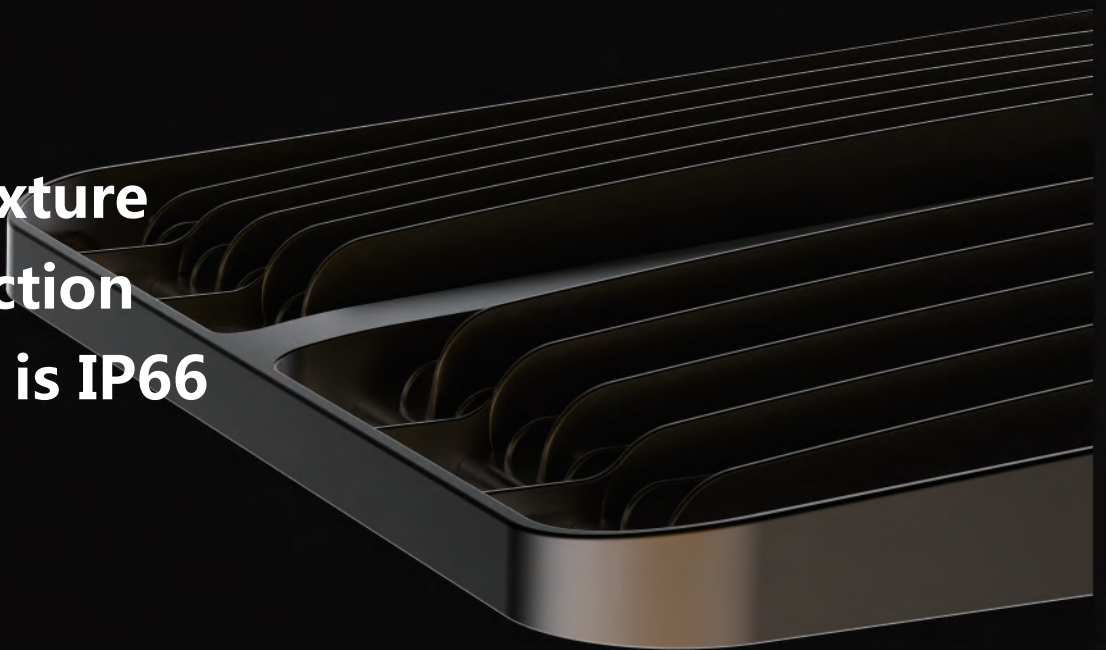
sales@faturvert.com

www.faturvert.com



**Luminous
Efficacy up to
140lm/W, Ra80**

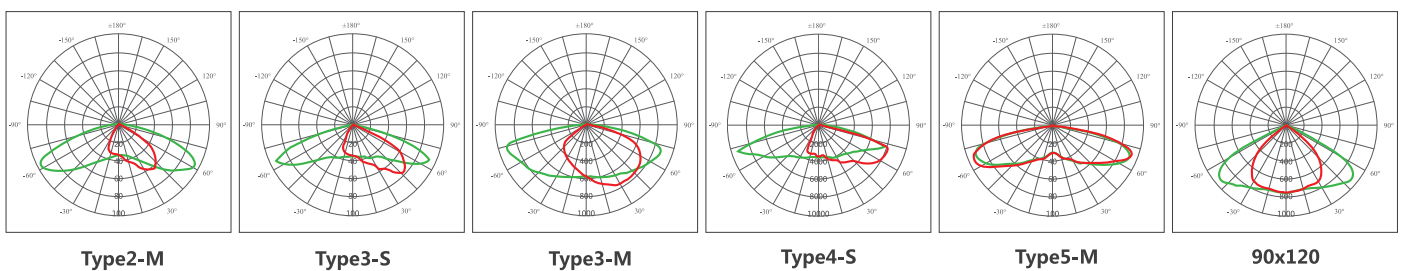
**The fixture
protection
grade is IP66**



Technical Parameters

Watts	80W	100W	150W	185W	240W	300W	400W	500W
Lumen Output	11200LM	14000LM	21000LM	25160LM	28800LM	41400LM	56000LM	68000LM
CCT	3000K, 4000K, 5000K, 5700K, 6500K							
CRI	>80Ra							
EPA	0.23ft ²			0.42ft ²			0.576ft ²	
Light Source	Lumileds							
Dimensions(mm)	428x304x88mm			595x304x92mm			768x340x105mm	
Input Voltage	100-277V / 240-480V							
Power Factor	0.95							
THD	<15%							
Surge Protection	10KV Current Surge Optional							
Driver	Meanwell, SOSEN Optional							
Operating Temp Range	-40°C to +55°C							
IP Rating	IP66							
Dimming Control (Optional)	1-10V.DMX.DALI Optional							
Life Span	L70, >120000h							
Light Distributor Options	Type2-M, Type3-S, Type3-M, Type4-S, Type5-M, 90°x120°, 30°, 45°, 60°							
Certification	DLC 4.3, UL, CUL, CE, DLC, SAA							

Photometric Diagrams



Effective Projected Area

EPA(Sq.Ft.)	Configuration	Weight(Lbs.)
0.55	1	8.50
1.10	2@180	17.00
0.95	2@90	17.00
1.50	3@90	25.50
1.74	3@120	25.50
1.74	4@90	34.00

Product Description

This slick and modern luminaire has been designed to handle any environment. With a beautiful slimline design along with one of the highest lumen performance on the market, this versatile fixture can be used as a flood light or an area light. Including a multitude of mounting options, surge protection devices, IOT photocell capability, and the most technologically advanced LED's on the market, the LED6099 is ready to conquer the lighting landscape.

Bi-Level Sensor Control

Fixture has the option to add an occupancy sensor allowing bi-user.

Proprietary Optical Control

Specifically designed lens Type III, IV, and Vallow architects maximum freedom to design any layout without restraint. These optics are engineered for maximum light output.

Photocontrol

Optional Photocontrol allows for further energy saving.

Pole Mount

This pole mount was designed to complement the fixture's aerodynamic shape. By further reducing the fixture's drag, this product is suitable for harsher environments.

PC Lens is Easy to Replace

Modular design, large, medium and small size, uniform PC lens, easy to replace.

DLC 4.3 Premium

Integrated Heatsink

Integrated cooling fin provides excellent thermal dissipation. This design allows the fixture to have extremely long lifetime hours.

Door Frame

The door frame is designed with the installer in mind. It has a simple to use hinge access so allowing installers to be hands-free when entering electrical compartment. This saves time and money.

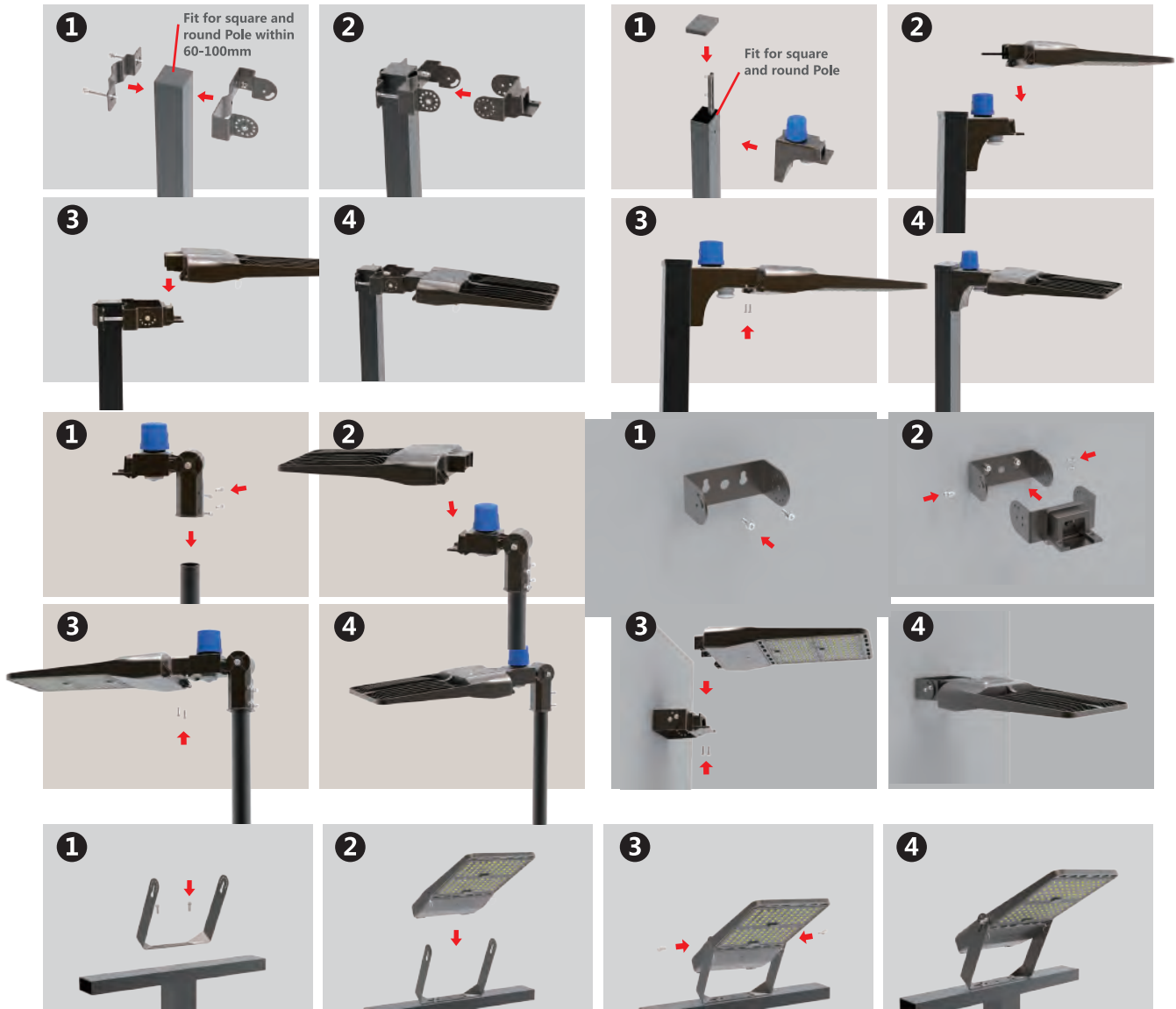
Applications





Optional Installation

Compared with the existing technology, the lighting module is installed on the bracket, and has the advantages of safety and reliability, and does not fall off. When the LED area light lamp is installed in an illuminated module, the fastening bolt(fastening connector) at both ends of the lighting module can play the role of self locking and push, and can ensure that the lighting module is not slipped from the support. The limitation of the general bracket opening can be solved, and the specific use occasions of the LED area light lamp can be eddetively extended.



Dimmension

